

Submit 3 Copies To Appropriate District  
Office  
District I  
1625 N. French Dr., Hobbs, NM 88240  
District II  
1301 W. Grand Ave., Artesia, NM 88210  
District III  
1000 Rio Brazos Rd., Aztec, NM 87410  
District IV  
1220 S. St. Francis Dr., Santa Fe, NM  
87505

State of New Mexico  
Energy, Minerals and Natural Resources

Form C-103  
June 19, 2008

OIL CONSERVATION DIVISION  
1220 South St. Francis Dr.  
Santa Fe, NM 87505

WELL API NO. 30-005-64166
5. Indicate Type of Lease STATE <input checked="" type="checkbox"/> FEE <input type="checkbox"/>
6. State Oil & Gas Lease No. V-9431
7. Lease Name or Unit Agreement Name Racer State
8. Well Number 1
9. OGRID Number 013837
10. Pool Name or Wildcat Wildcat; San Andres
11. Elevation (Show whether DR, RKB, RT, GR etc.) 3687' GR

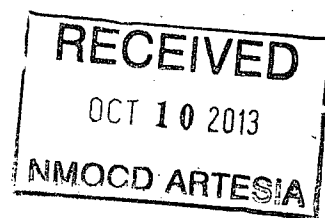
SUNDRY NOTICES AND REPORTS ON WELLS (DO NOT USE THIS FORM FOR PROPOSALS TO DRILL OR TO DEEPEN OR PLUG BACK TO A DIFFERENT RESERVOIR, USE "APPLICATION FOR PERMIT" (FORM C-101) FOR SUCH PROPOSALS.)	
1. Type of Well: Oil Well <input checked="" type="checkbox"/> Gas Well <input type="checkbox"/> Other <input type="checkbox"/>	
2. Name of Operator Mack Energy Corporation	
3. Address of Operator P.O. Box 960 Artesia, NM 88210	
4. Well Location Unit Letter <u>K</u> <u>1650</u> feet from the <u>South</u> line and <u>1800</u> feet from the <u>West</u> line Section <u>18</u> Township <u>14S</u> Range <u>29E</u> NMPM County <u>Chaves</u>	
11. Elevation (Show whether DR, RKB, RT, GR etc.) 3687' GR	

12. Check Appropriate Box to Indicate Nature of Notice, Report or Other Data

NOTICE OF INTENTION TO:		SUBSEQUENT REPORT OF:	
PERFORM REMEDIAL WORK <input type="checkbox"/>	PLUG AND ABANDON <input type="checkbox"/>	REMEDIALWORK <input type="checkbox"/>	ALTERING CASING <input type="checkbox"/>
TEMPORARILY ABANDON <input type="checkbox"/>	CHANGE PLANS <input type="checkbox"/>	COMMENCE DRILLING OPNS. <input type="checkbox"/>	P AND A <input type="checkbox"/>
PULL OR ALTER CASING <input type="checkbox"/>	MULTIPLE COMPL <input type="checkbox"/>	CASING/CEMENT JOB <input type="checkbox"/>	
DOWNHOLE COMMINGLE <input type="checkbox"/>			
OTHER: <input type="checkbox"/>		OTHER: Location Change <input checked="" type="checkbox"/>	

13. Describe proposed or completed operations. (Clearly state all pertinent details, and give pertinent dates, including estimated date of starting any proposed work). SEE RULE 1103. For Multiple Completions: Attach wellbore diagram of proposed completion or recompletion.

Mack Energy has moved the Racer State #1 location 150' to the east. This was done to avoid causing a detour of the existing road to the ranchers residence.



Spud Date:

Rig Release Date:

I hereby certify that the information above is true and complete to the best of my knowledge and belief.

SIGNATURE Jerry W. Sherrell TITLE Production Clerk DATE 10-9-2013

Type or print name Jerry W. Sherrell E-mail address: jerrys@mec.com PHONE: (575)748-1288

For State Use Only

APPROVED BY: [Signature] TITLE Dist. Supervisor DATE 10/11/13  
Conditions of Approval (if any):

# RECEIVED

OCT 10 2013

District I  
1625 N. French Dr., Hobbs, NM 88249  
Phone: (575) 393-6161 Fax: (575) 393-0720  
District II  
311 S. First St., Artesia, NM 88210  
Phone: (575) 748-1283 Fax: (575) 748-9720  
District III  
1000 Rio Brazos Road, Aztec, NM 87410  
Phone: (505) 334-6178 Fax: (505) 334-6170  
District IV  
1220 S. St. Francis Dr., Santa Fe, NM 87505  
Phone: (505) 476-3460 Fax: (505) 476-3462

State of New Mexico  
Energy, Minerals & Natural Resources Department  
OIL CONSERVATION DIVISION  
1220 South St. Francis Dr.  
Santa Fe, NM 87505

Form C-102  
Revised August 1, 2011  
Submit one copy to appropriate  
District Office

☐ AMENDED REPORT

## WELL LOCATION AND ACREAGE DEDICATION PLAT

<sup>1</sup> API Number <b>30-005-64166</b>	<sup>2</sup> Pool Code <b>97662</b>	<sup>3</sup> Pool Name <b>Wildcat, San Andres</b>
<sup>4</sup> Property Code <b>40155</b>	<sup>5</sup> Property Name <b>RACER STATE</b>	
<sup>7</sup> OGRID No. <b>13837</b>	<sup>9</sup> Elevation <b>3687.0</b>	
<sup>8</sup> Operator Name <b>MACK ENERGY CORPORATION</b>		

<sup>10</sup> Surface Location									
UL or lot no.	Section	Township	Range	Lot Idn	Feet from the	North/South line	Feet from the	East/West line	County
<b>K</b>	<b>18</b>	<b>14 S</b>	<b>29 E</b>		<b>1650</b>	<b>SOUTH</b>	<b>1800</b>	<b>WEST</b>	<b>CHAVES</b>

<sup>11</sup> Bottom Hole Location If Different From Surface									
UL or lot no.	Section	Township	Range	Lot Idn	Feet from the	North/South line	Feet from the	East/West line	County
<sup>12</sup> Dedicated Acres		<sup>13</sup> Joint or Infill		<sup>14</sup> Consolidation Code		<sup>15</sup> Order No.			

No allowable will be assigned to this completion until all interests have been consolidated or a non-standard unit has been approved by the division.

<p>S87°09'46"E 2619.55 FT</p> <p>NW CORNER SEC. 18 LAT. = 33.1104403°N LONG. = 104.0758481°W NMSP EAST (FT) N = 767789.74 E = 578842.27</p> <p>LOT 1</p>			<p>N89°29'56"E 2644.10 FT</p> <p>N/4 CORNER SEC. 18 LAT. = 33.1100660°N LONG. = 104.0673070°W NMSP EAST (FT) N = 767660.09 E = 581457.93</p> <p>NOTE: LATITUDE AND LONGITUDE COORDINATES ARE SHOWN USING THE NORTH AMERICAN DATUM OF 1927 (NAD27), AND ARE IN DECIMAL DEGREE FORMAT.</p>			<p>NE CORNER SEC. 18 LAT. = 33.1101108°N LONG. = 104.0586743°W NMSP EAST (FT) N = 767683.19 E = 584101.24</p>		
<p>W/4 CORNER SEC. 18 LAT. = 33.1031691°N LONG. = 104.0758613°W NMSP EAST (FT) N = 765144.30 E = 578844.73</p> <p>LOT 2</p>			<p>W/4 CORNER SEC. 18 LAT. = 33.1031691°N LONG. = 104.0758613°W NMSP EAST (FT) N = 765144.30 E = 578844.73</p>			<p>E/4 CORNER SEC. 18 LAT. = 33.1030709°N LONG. = 104.0586424°W NMSP EAST (FT) N = 765121.95 E = 584117.72</p>		
<p>SW CORNER SEC. 18 LAT. = 33.0958977°N LONG. = 104.0758730°W NMSP EAST (FT) N = 762498.78 E = 578847.64</p> <p>LOT 3</p>			<p>LOT 4</p>			<p>SE CORNER SEC. 18 LAT. = 33.0958873°N LONG. = 104.0587503°W NMSP EAST (FT) N = 762508.31 E = 584091.53</p>		
<p>S89°53'44"W 2622.63 FT</p>			<p>SURFACE LOCATION</p> <p>RACER STATE #1 ELEV. = 3687.0' LAT. = 33.1004281°N (NAD27) LONG. = 104.0699894°W NMSP EAST (FT) N = 764151.53 E = 580645.38</p> <p>DNF</p>			<p>S89°53'44"W 2622.63 FT</p>		

**<sup>17</sup> OPERATOR CERTIFICATION**

I hereby certify that the information contained herein is true and complete to the best of my knowledge and belief, and that this organization either owns a working interest or unleased mineral interest in the land including the proposed bottom hole location or has a right to drill this well at this location pursuant to a contract with an owner of such a mineral or working interest, or to a voluntary pooling agreement or a compulsory pooling order heretofore entered by the division.

*Jerry W. Sherrell* 10-9-2013  
Signature Date

**Jerry W. Sherrell**  
Printed Name

**jerryse@mec.com**  
E-mail Address

**<sup>18</sup> SURVEYOR CERTIFICATION**

I hereby certify that the well location shown on this plat was plotted from field notes of actual surveys made by me or under my supervision, and that the same is true and correct to the best of my belief.

OCTOBER 7, 2013  
Date of Survey

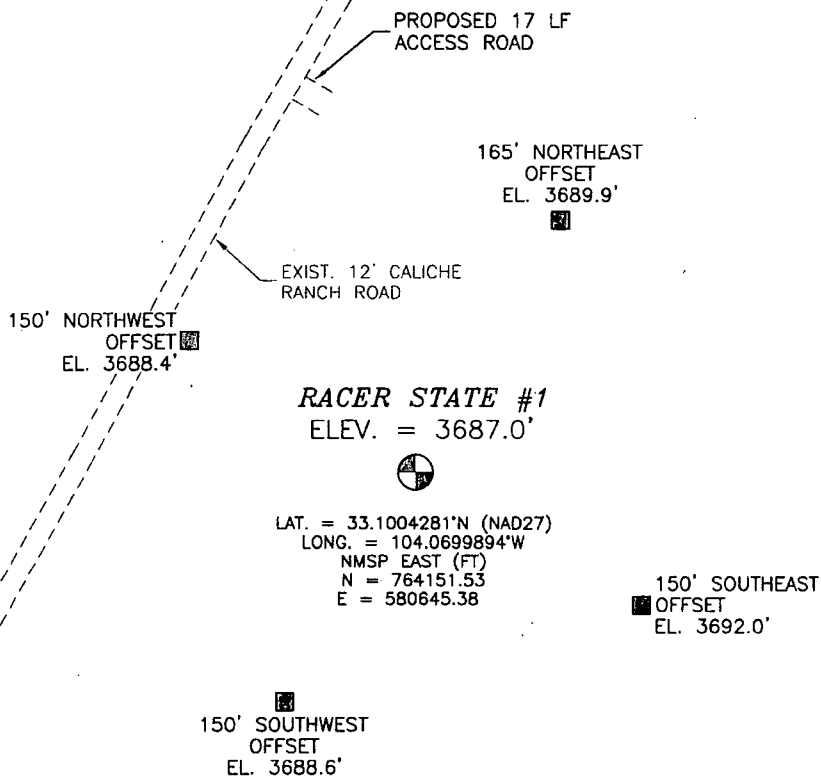
*[Signature]*  
Signature and Seal of Professional Surveyor

Certificate Number **ELIENOR F. ARAMJIBLO, PLS 12797**  
SURVEY NO. 2334A

SECTION 18, TOWNSHIP 14 SOUTH, RANGE 29 EAST, N.M.P.M.  
CHAVES COUNTY, STATE OF NEW MEXICO

SITE MAP

NOTE: THE LATITUDE AND LONGITUDE COORDINATES ARE SHOWN  
USING THE NORTH AMERICAN DATUM OF 1927 (NAD27), AND ARE IN  
DECIMAL DEGREE FORMAT.



010 50 100 200

SCALE 1" = 100'

DIRECTIONS TO LOCATION

FROM THE INTERSECTION OF CR 27 (TERESA) AND CR 161 (KATRINA)  
GO NORTHWEST ON CR 161 FOR APPROX. 3.2 MILES. GO NORTHEAST  
ON CALICHE RANCH ROAD APPROX. 0.37 OF A MILE. LOCATION IS  
APPROX. 30' EAST.

MACK ENERGY CORPORATION

**RACER STATE #1**

LOCATED 1650 FT. FROM THE SOUTH LINE  
AND 1800 FT. FROM THE WEST LINE OF  
SECTION 18, TOWNSHIP 14 SOUTH,  
RANGE 29 EAST, N.M.P.M.  
CHAVES COUNTY, STATE OF NEW MEXICO

OCTOBER 7, 2013

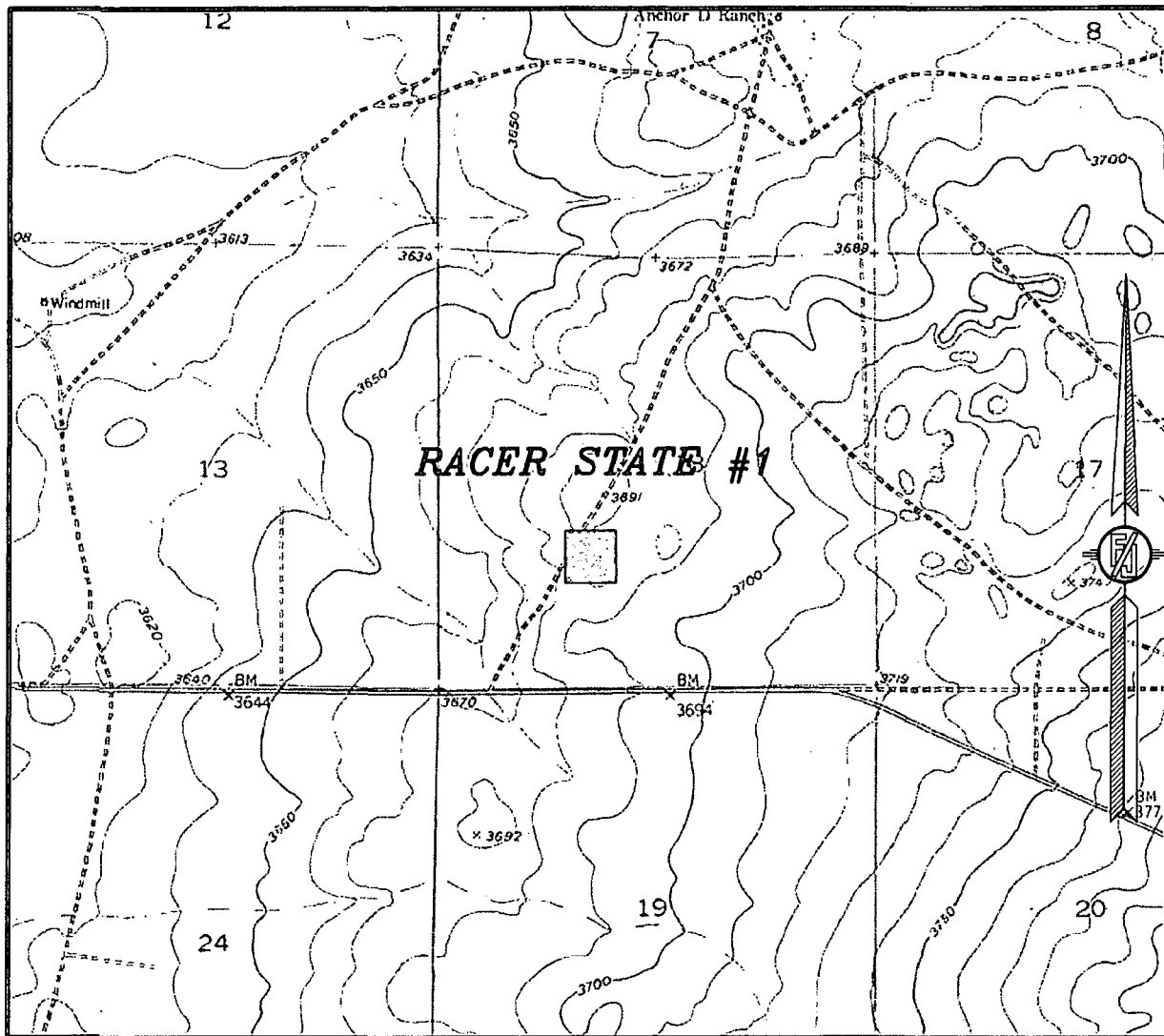
SURVEY NO. 2334A

MADRON SURVEYING, INC.

301 SOUTH CANAL  
(575) 234-3341

CARLSBAD, NEW MEXICO

SECTION 18, TOWNSHIP 14 SOUTH, RANGE 29 EAST, N.M.P.M.  
CHAVES COUNTY, STATE OF NEW MEXICO  
LOCATION VERIFICATION MAP



USGS QUAD MAP:  
KING CAMP

NOT TO SCALE

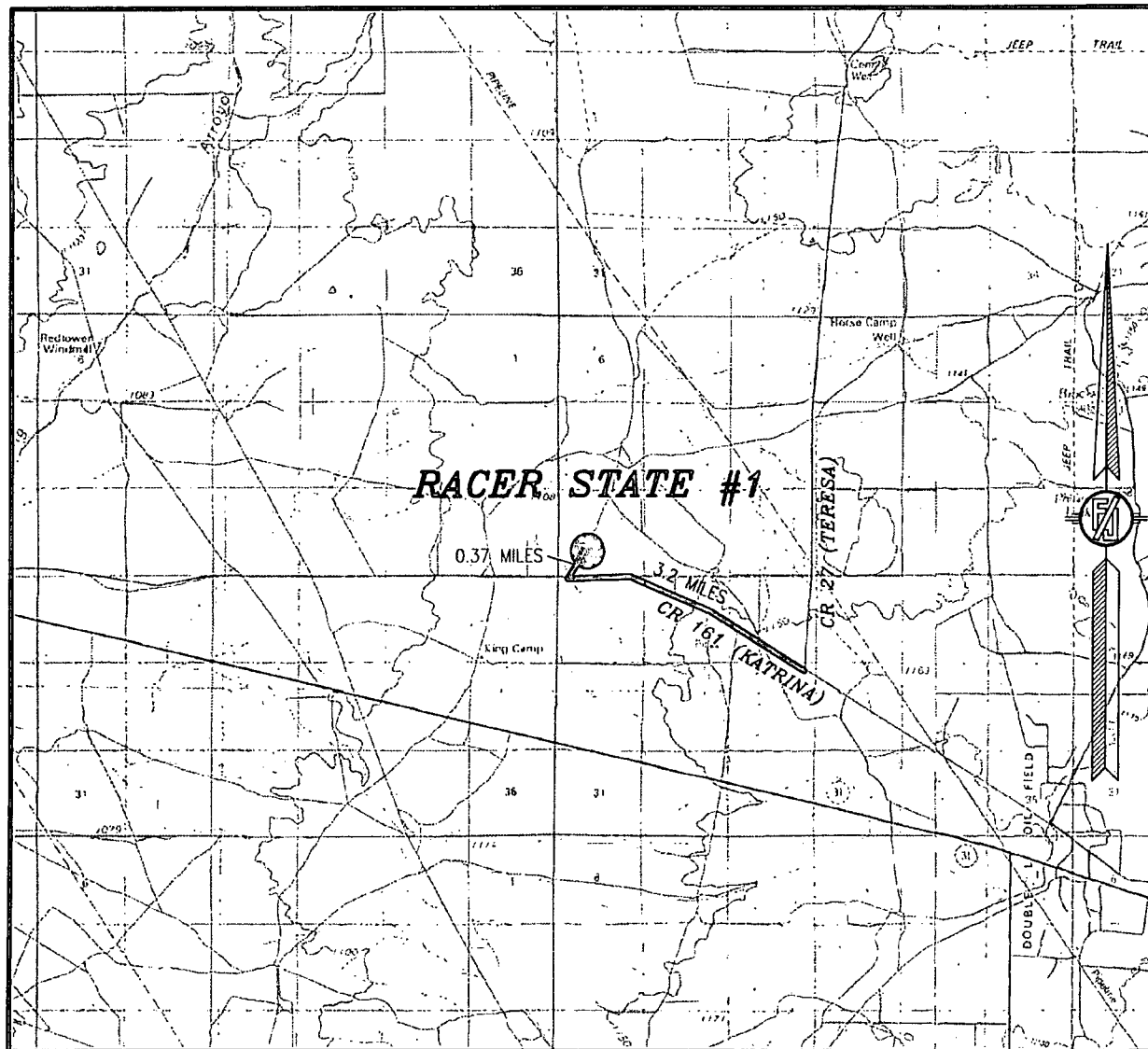
MACK ENERGY CORPORATION  
**RACER STATE #1**  
LOCATED 1650 FT. FROM THE SOUTH LINE  
AND 1800 FT. FROM THE WEST LINE OF  
SECTION 18, TOWNSHIP 14 SOUTH,  
RANGE 29 EAST, N.M.P.M.  
CHAVES COUNTY, STATE OF NEW MEXICO

OCTOBER 7, 2013

SURVEY NO. 2334A

MADRON SURVEYING, INC. 301 SOUTH CANAL (575) 234-3341 CARLSBAD, NEW MEXICO

SECTION 18, TOWNSHIP 14 SOUTH, RANGE 29 EAST, N.M.P.M.  
CHAVES COUNTY, STATE OF NEW MEXICO  
VICINITY MAP



NOT TO SCALE

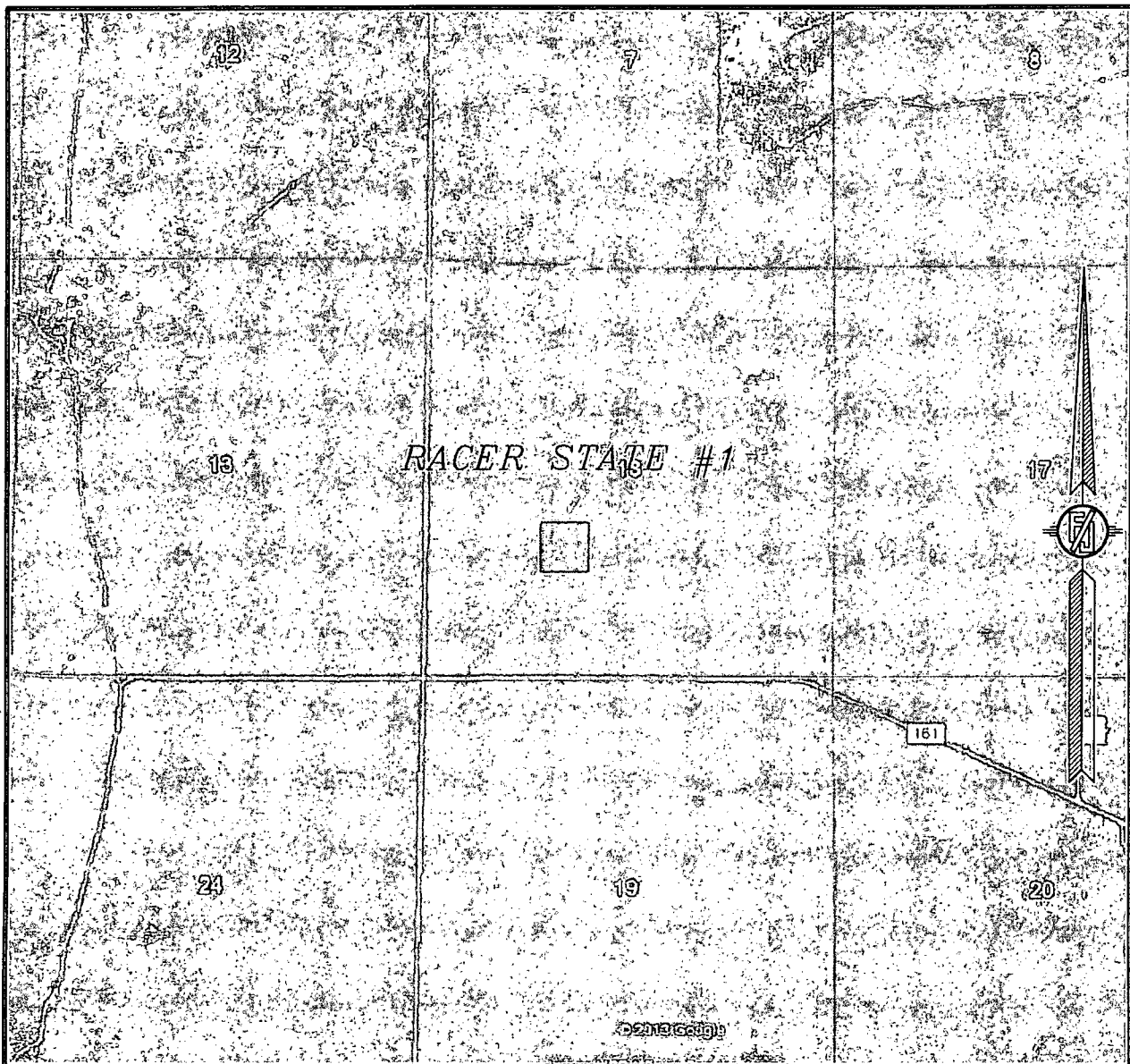
**MACK ENERGY CORPORATION**  
**RACER STATE #1**  
LOCATED 1650 FT. FROM THE SOUTH LINE  
AND 1800 FT. FROM THE WEST LINE OF  
SECTION 18, TOWNSHIP 14 SOUTH,  
RANGE 29 EAST, N.M.P.M.  
CHAVES COUNTY, STATE OF NEW MEXICO

**DIRECTIONS TO LOCATION**  
FROM THE INTERSECTION OF CR 27 (TERESA) AND CR 161 (KATRINA)  
GO NORTHWEST ON CR 161 FOR APPROX. 3.2 MILES. GO NORTHEAST  
ON CALICHE RANCH ROAD APPROX. 0.37 OF A MILE. LOCATION IS  
APPROX. 30° EAST.

OCTOBER 7, 2013

**MADRON SURVEYING, INC.** 301 SOUTH CANAL (575) 234-3341 **CARLSBAD, NEW MEXICO** SURVEY NO. 2334A

SECTION 18, TOWNSHIP 14 SOUTH, RANGE 29 EAST, N.M.P.M.  
CHAVES COUNTY, STATE OF NEW MEXICO  
**AERIAL PHOTO**



NOT TO SCALE  
AERIAL PHOTO:  
GOOGLE EARTH  
JULY 2011

**MACK ENERGY CORPORATION**  
**RACER STATE #1**  
LOCATED 1650 FT. FROM THE SOUTH LINE  
AND 1800 FT. FROM THE WEST LINE OF  
SECTION 18, TOWNSHIP 14 SOUTH,  
RANGE 29 EAST, N.M.P.M.  
CHAVES COUNTY, STATE OF NEW MEXICO

OCTOBER 7, 2013

SURVEY NO. 2334A

MADRON SURVEYING, INC. 301 SOUTH CANAL CARLSBAD, NEW MEXICO  
(575) 234-3341