

DISTRICT I
1625 N. French Dr., Hobbs, NM 88240
Phone: (575) 393-6161 Fax: (575) 393-0720

DISTRICT II
811 S. First St., Artesia, NM 88210
Phone: (575) 748-1283 Fax: (575) 748-9720

DISTRICT III
1000 Rio Brazos Road, Aztec, NM 87410
Phone: (505) 334-6178 Fax: (505) 334-6170

DISTRICT IV
1220 S. St. Francis Dr., Santa Fe, NM 87505
Phone: (505) 476-3460 Fax: (505) 476-3462

State of New Mexico
Energy, Minerals & Natural Resources Department

OIL CONSERVATION DIVISION

1220 South St. Francis Dr.
Santa Fe, New Mexico 87505

RECEIVED

NOV 18 2013

MOCD ARTESIA

Form C-102

Revised August 1, 2011

Submit one copy to appropriate
District Office

AMENDED REPORT

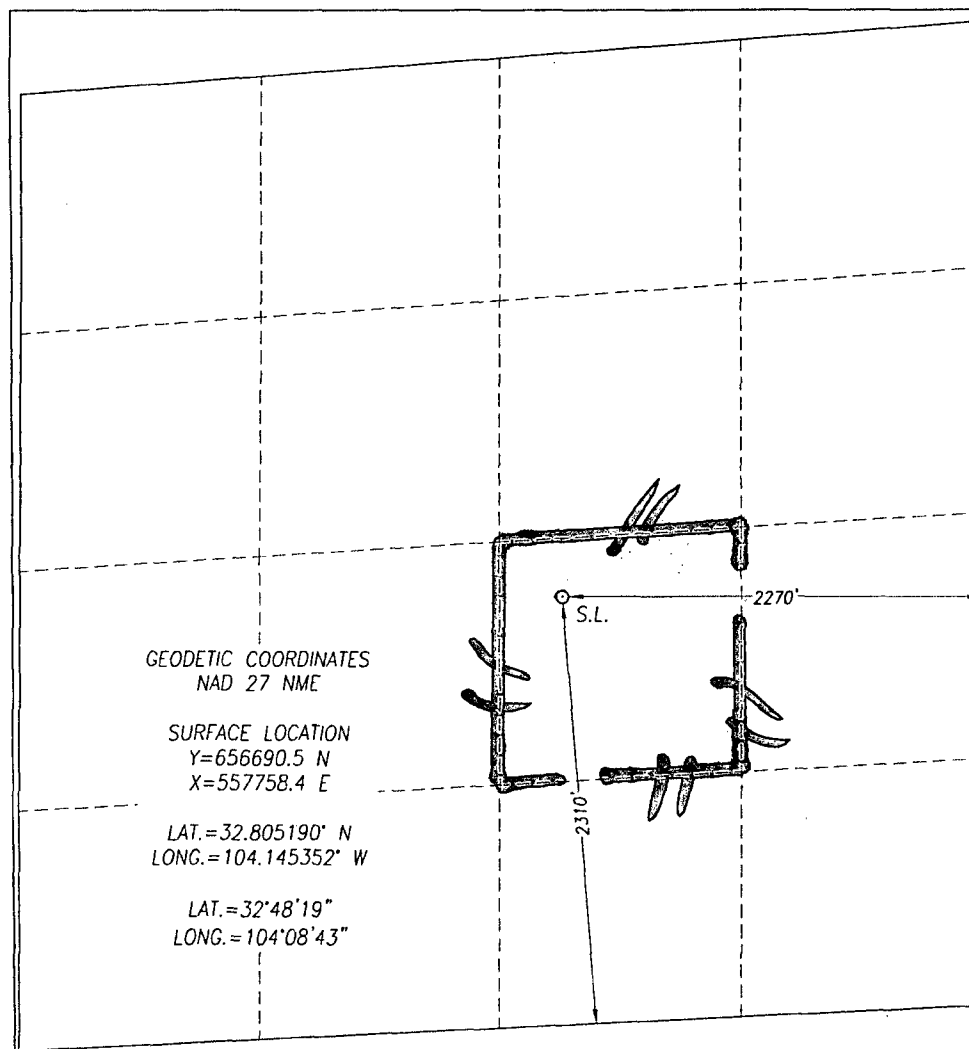
WELL LOCATION AND ACREAGE DEDICATION PLAT

API Number 30-015-41055		Pool Code 96880	Pool Name Artesia; Gloriata - Yeso (es)
Property Code 308701	Property Name A STATE		Well Number 078
OGRID No. 873	Operator Name APACHE CORPORATION		Elevation 3666'

Surface Location									
UL or lot No. J	Section 26	Township 17-S	Range 28-E	Lot Idn	Feet from the 2310	North/South line SOUTH	Feet from the 2270	East/West line EAST	County EDDY

Bottom Hole Location If Different From Surface									
UL or lot No.	Section	Township	Range	Lot Idn	Feet from the	North/South line	Feet from the	East/West line	County
Dedicated Acres 40		Joint or Infill		Consolidation Code		Order No.			

NO ALLOWABLE WILL BE ASSIGNED TO THIS COMPLETION UNTIL ALL INTERESTS HAVE BEEN CONSOLIDATED OR A NON-STANDARD UNIT HAS BEEN APPROVED BY THE DIVISION



OPERATOR CERTIFICATION

I hereby certify that the information herein is true and complete to the best of my knowledge and belief, and that this organization either owns a working interest or unleased mineral interest in the land including the proposed bottom hole location or has a right to drill this well at this location pursuant to a contract with an owner of such mineral or working interest, or to a voluntary pooling agreement or a compulsory pooling order heretofore entered by the division.

[Signature] 10/11/13
Signature Date

Michael O'Connor
Printed Name

michael.oconnor@apachecorp.com
E-mail Address

SURVEYOR CERTIFICATION

I hereby certify that the well location shown on this plat was plotted from field notes of actual surveys made by me or under my supervision, and that the same is true and correct to the best of my belief.

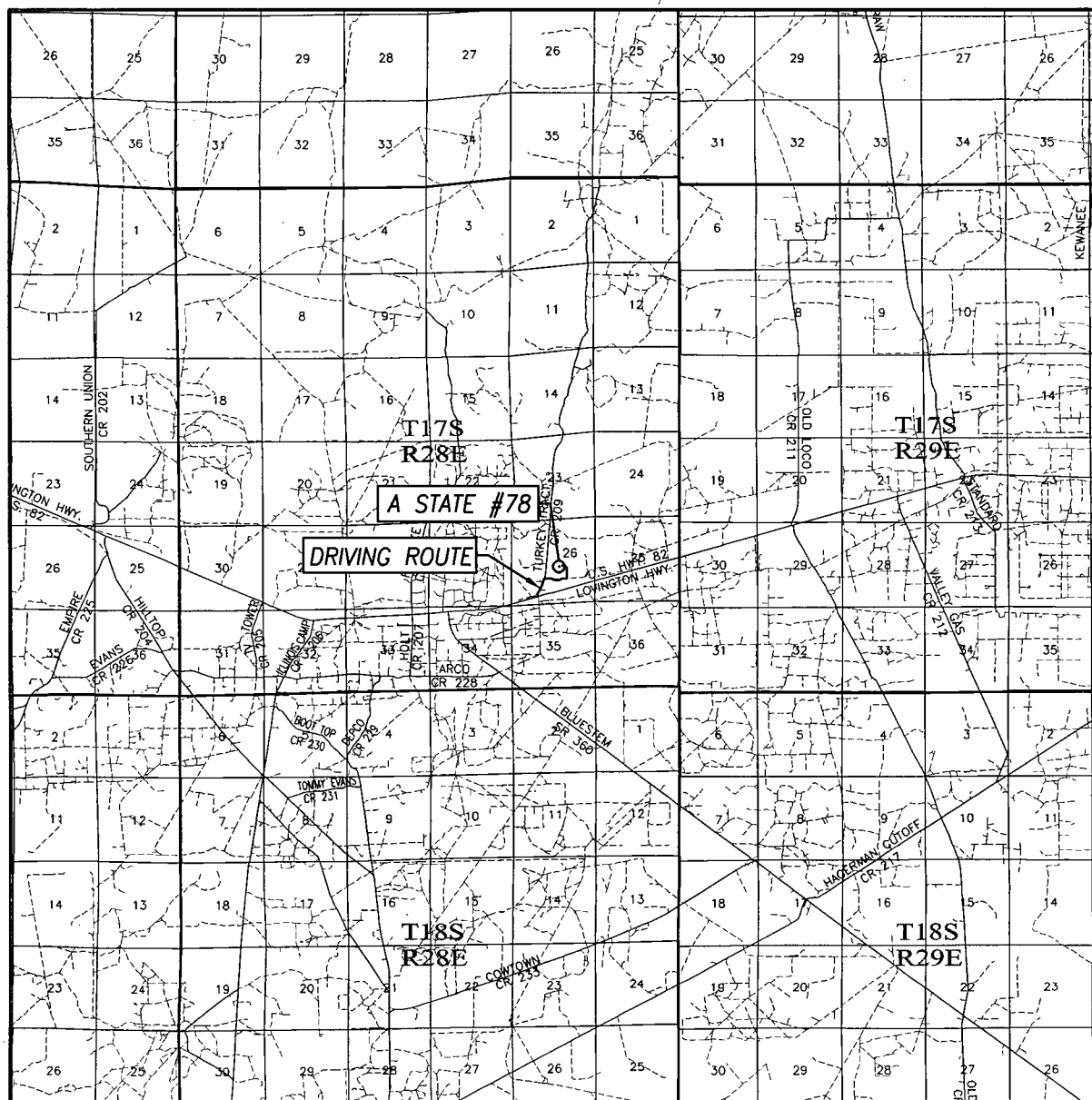
JANUARY 21, 2013

Date of Survey
Signature & Seal of Professional Surveyor:

[Signature]
Professional Surveyor
3239
Certificate Number: Gary S. Eidson 12641
Professional Surveyor: Ronald J. Eidson 3239

BKL REL. W.O. 10/13/13 WSC W.O. 13.13.1069

VICINITY MAP



SCALE: 1" = 2 MILES

SEC. 26 TWP. 17-S RGE. 28-E

SURVEY N.M.P.M.

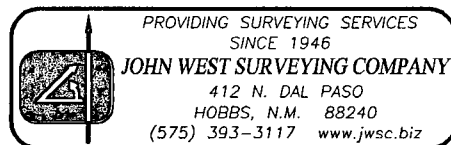
COUNTY EDDY STATE NEW MEXICO

DESCRIPTION 2310' FSL & 2270' FEL

ELEVATION 3666'

OPERATOR APACHE CORPORATION

LEASE A STATE



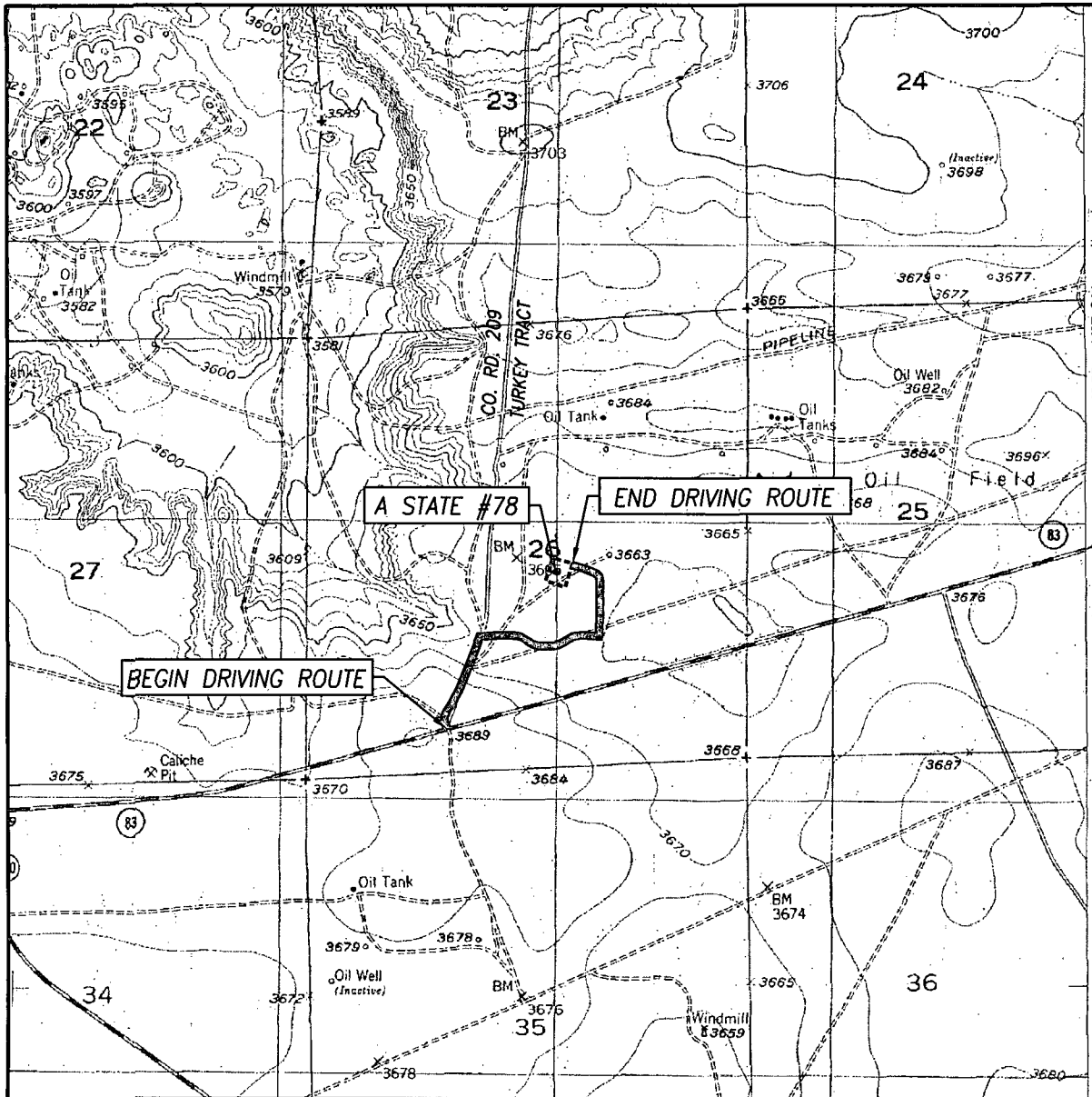
PROVIDING SURVEYING SERVICES
SINCE 1946

JOHN WEST SURVEYING COMPANY

412 N. DAL PASO
HOBBS, N.M. 88240

(575) 393-3117 www.jwsc.biz

LOCATION VERIFICATION MAP



SCALE: 1" = 2000'


CONTOUR INTERVAL:
RED LAKE, N.M. - 10'

SEC. 26 TWP. 17-S RGE. 28-E
SURVEY _____ N.M.P.M.
COUNTY EDDY STATE NEW MEXICO
DESCRIPTION 2310' FSL & 2270' FEL
ELEVATION 3666'

DIRECTIONS TO A STATE #78

FROM THE INTERSECTION OF HIGHWAY 62-180 AND CO.
RD. 209 (TURKEY TRACT) GO NORTH APPROX. 0.2
MILES; TURN RIGHT AND GO EAST APPROX. 0.2 MILES;
TURN LEFT AND GO NORTH APPROX. 0.1 MILES; TURN
LEFT AND GO WEST APPROX. 0.1 MILES TO THIS
LOCATION TO THIS LOCATION.

OPERATOR APACHE CORPORATION
LEASE A STATE
U.S.G.S. TOPOGRAPHIC MAP
RED LAKE, N.M.



PROVIDING SURVEYING SERVICES
SINCE 1946
JOHN WEST SURVEYING COMPANY
412 N. DAL PASO
HOBBS, N.M. 88240
(575) 393-3117 www.jwsc.biz

A State #78
API #30-015-41055
Apache Corp. (873)

Completion continued.

8/26/13 MIRU foam air unit. DO CBP's @ 4160' & 4950'. DO float collar & cmt to PBTD @ 5890'. Circ
hole clean.

8/27/13 RIH w/ 2-7/8" J-55 6.5# tbg, SN @ 5705'. EOT @ 5795'. RIH w/ pump & rods. Clean location.

8/30/13 Set new 640 pumping unit.

9/03/13 Installed electric & well head switch. POP.