

DISTRICT I  
1625 N. French Dr., Hobbs, NM 88240  
Phone: (575) 393-6161 Fax: (575) 393-0720

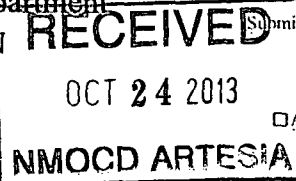
DISTRICT II  
811 S. First St., Artesia, NM 88210  
Phone: (575) 748-1283 Fax: (575) 748-9720

DISTRICT III  
1000 Rio Brazos Road, Aztec, NM 87410  
Phone: (505) 334-6178 Fax: (505) 334-6170

DISTRICT IV  
1220 S. St. Francis Dr., Santa Fe, NM 87505  
Phone: (505) 476-3460 Fax: (505) 476-3462

State of New Mexico  
Energy, Minerals & Natural Resources Department  
OIL CONSERVATION DIVISION  
1220 South St. Francis Dr.  
Santa Fe, New Mexico 87505

Form C-102  
Revised August 1, 2011  
Submit one copy to appropriate  
District Office



WELL LOCATION AND ACREAGE DEDICATION PLAT

API Number <b>30-015-39927</b>	Pool Code <b>96830</b>	Pool Name <b>ARTESIA; GLORIETA-YESO (O)</b>
Property Code <b>39734</b>	Property Name <b>AB STATE 647</b>	Well Number <b>001</b>
OGRID No. <b>873</b>	Operator Name <b>APACHE CORPORATION</b>	Elevation <b>3680'</b>

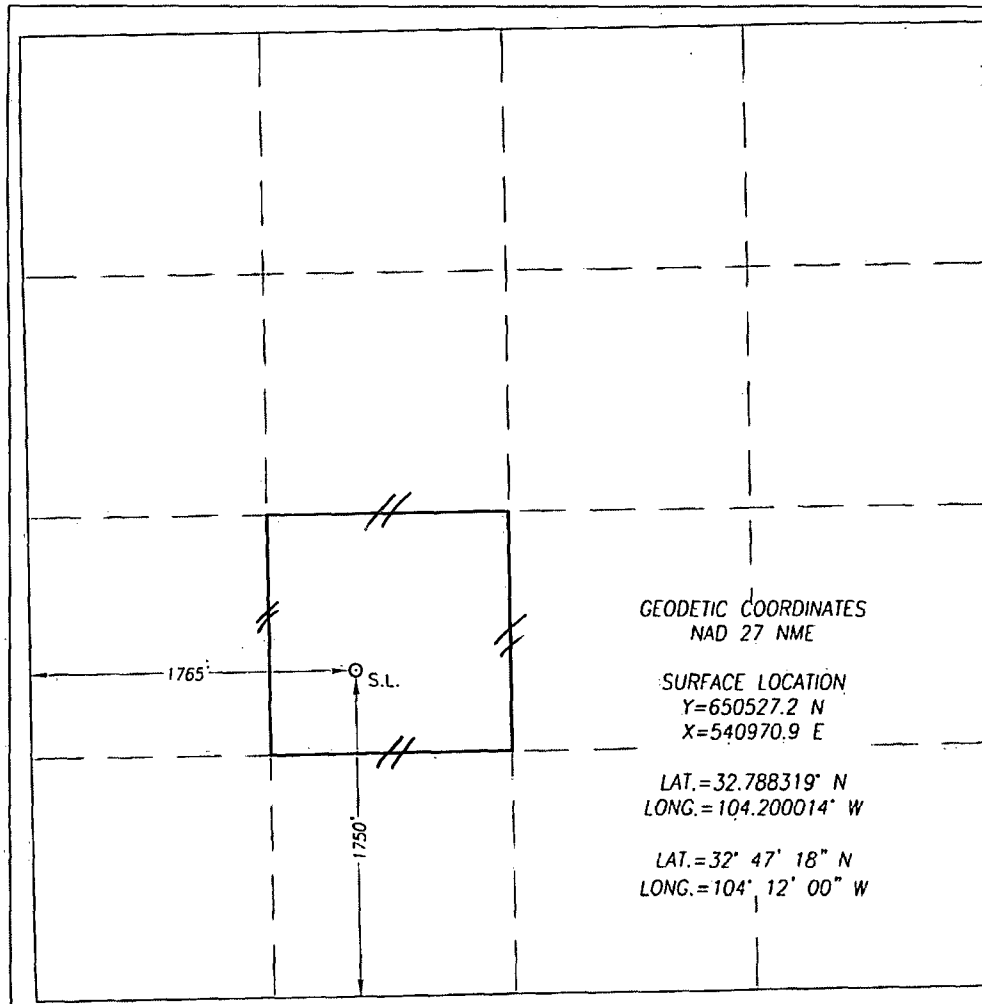
Surface Location

UL or lot No. <b>K</b>	Section <b>32</b>	Township <b>17-S</b>	Range <b>28-E</b>	Lot Idn	Feet from the <b>1750</b>	North/South line <b>SOUTH</b>	Feet from the <b>1765</b>	East/West line <b>WEST</b>	County <b>EDDY</b>
---------------------------	----------------------	-------------------------	----------------------	---------	------------------------------	----------------------------------	------------------------------	-------------------------------	-----------------------

Bottom Hole Location If Different From Surface

UL or lot No.	Section	Township	Range	Lot Idn	Feet from the	North/South line	Feet from the	East/West line	County
Dedicated Acres <b>40</b>	Joint or Infill	Consolidation Code	Order No.						

NO ALLOWABLE WILL BE ASSIGNED TO THIS COMPLETION UNTIL ALL INTERESTS HAVE BEEN CONSOLIDATED OR A NON-STANDARD UNIT HAS BEEN APPROVED BY THE DIVISION



OPERATOR CERTIFICATION

I hereby certify that the information herein is true and complete to the best of my knowledge and belief, and that this organization either owns a working interest or unleased mineral interest in the land including the proposed bottom hole location or has a right to drill this well at this location pursuant to a contract with an owner of such mineral or working interest, or to a voluntary pooling agreement or a compulsory pooling order heretofore entered by the division.

*[Signature]* 10/02/2013  
Signature Date  
**Fatima Vasquez**  
Printed Name  
**Fatima.Vasquez@apachecorp.com**  
E-mail Address

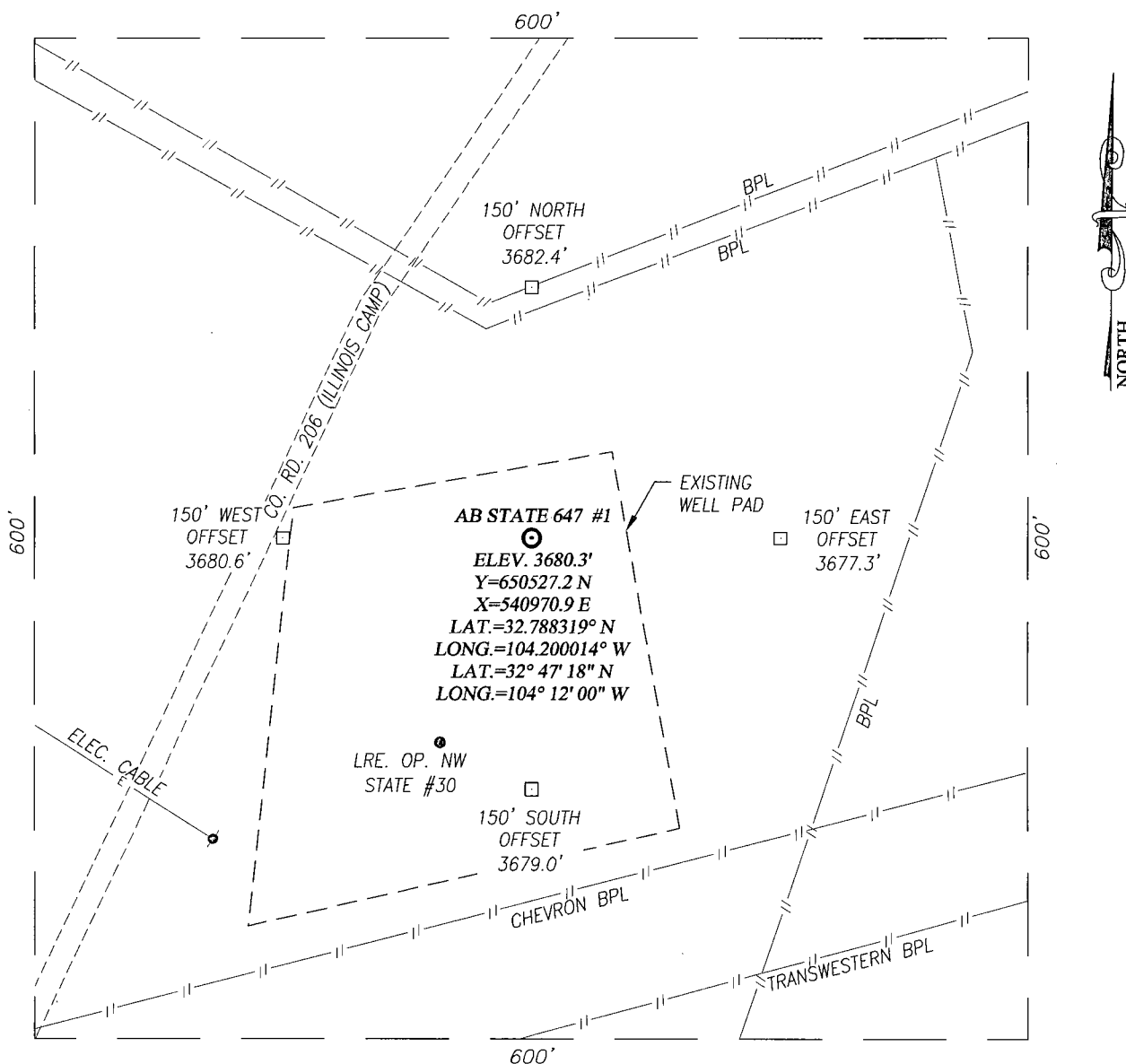
SURVEYOR CERTIFICATION

I hereby certify that the well location shown on this plat was plotted from field notes of actual surveys made by me or under my supervision, and that the same is true and correct to the best of my belief.

JANUARY 21, 2012

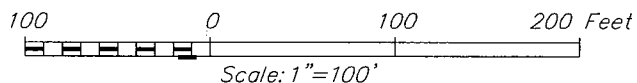
Date of Survey  
Signature of Professional Surveyor

*[Signature]*  
NEW MEXICO  
REGISTERED SURVEYOR  
3239  
Certificate Number 12641  
Gary C. Eidson  
Ronald J. Eidson 3239



#### DIRECTIONS TO LOCATION

FROM THE INTERSECTION OF US, HWY. #82 AND CO. RD. #206.  
GO SOUTH ON CO. RD. #206 APPROX. 0.6 MILES TO THE  
LOCATION.

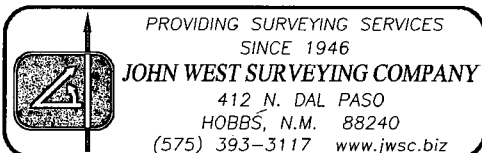


## APACHE CORPORATION

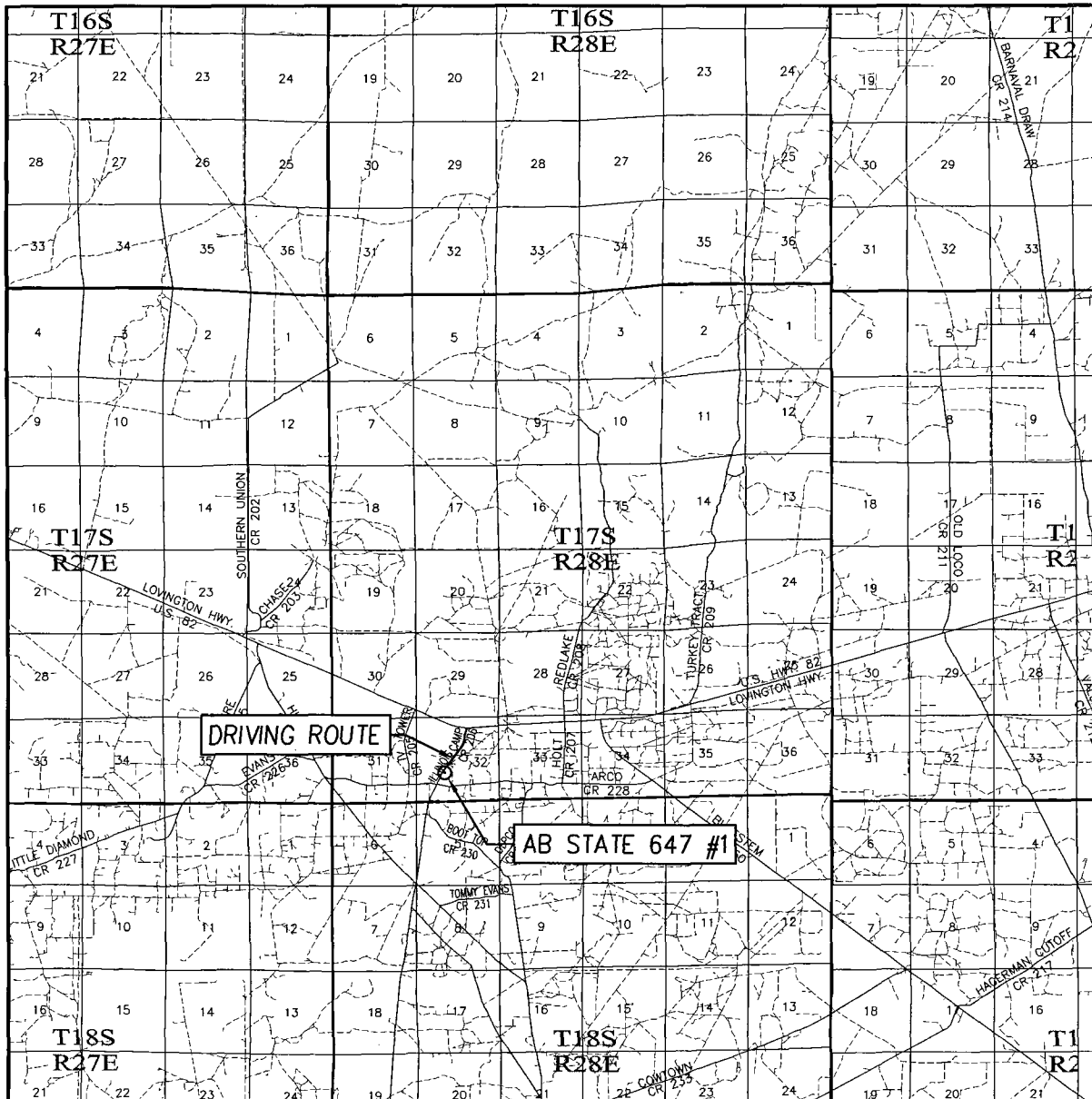
**AB STATE 647 #1 WELL**  
**LOCATED 1750 FEET FROM THE SOUTH LINE**  
**AND 1765 FEET FROM THE WEST LINE OF SECTION 32,**  
**TOWNSHIP 17 SOUTH, RANGE 28 EAST, N.M.P.M.,**  
**EDDY COUNTY, NEW MEXICO**

Survey Date: 1/21/12	CAD Date: 9/24/13	Drawn By: BKL
W.O. No.: 13131082	Rev: .	Rel. W.O.: 12110007

Sheet 1 of 1



# VICINITY MAP



SCALE: 1" = 2 MILES

DRIVING ROUTE: SEE LOCATION MAP

SEC. 32 TWP. 17-S RGE. 28-E

SURVEY \_\_\_\_\_ N.M.P.M.

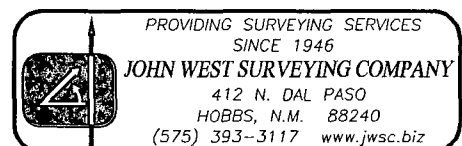
COUNTY EDDY STATE NEW MEXICO

DESCRIPTION 1750' FSL & 1765' FWL

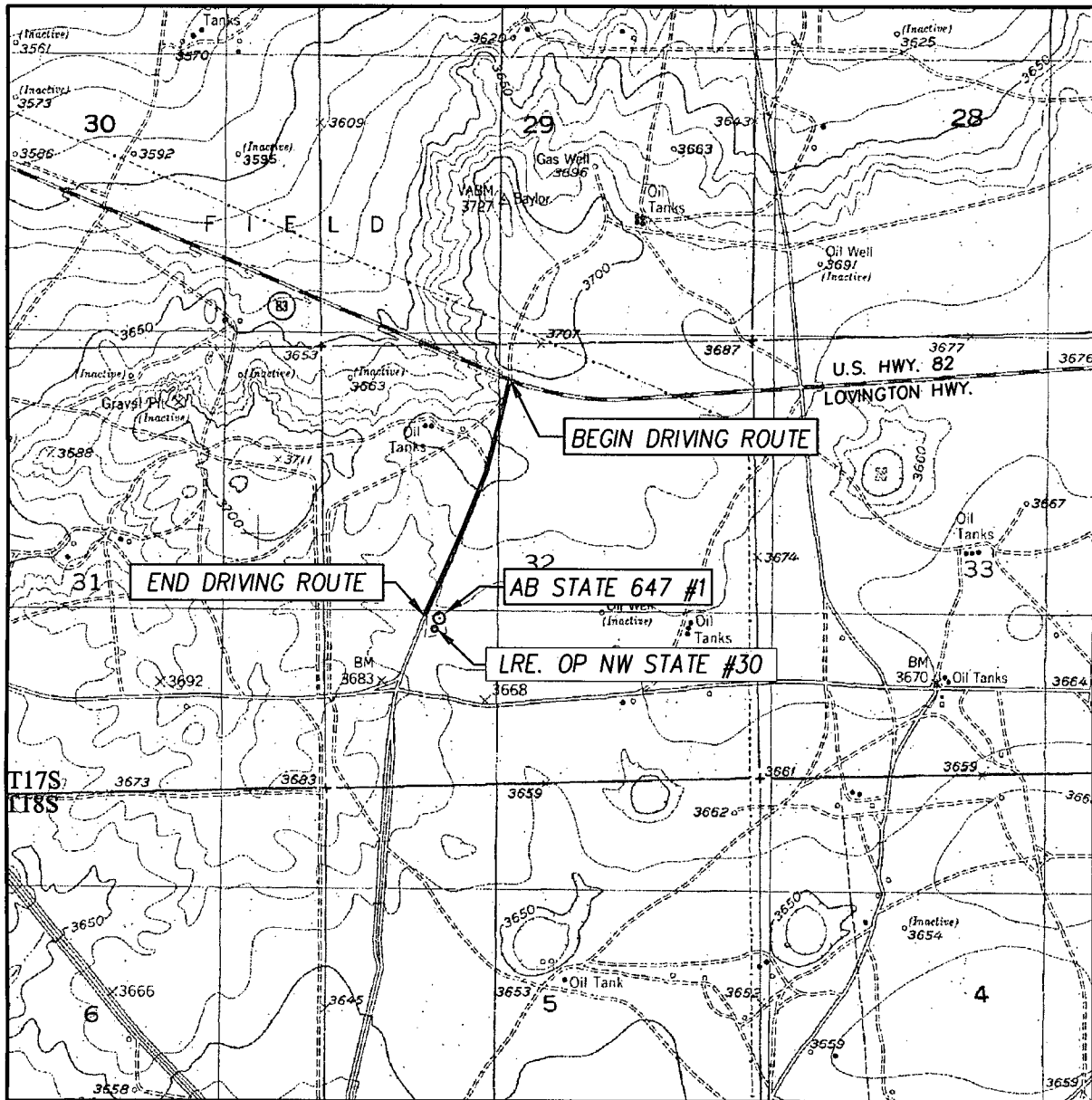
ELEVATION 3680'

OPERATOR APACHE CORPORATION

LEASE AB STATE 647



# LOCATION VERIFICATION MAP



SCALE: 1" = 2000'

CONTOUR INTERVAL:  
RED LAKE, N.M. - 10'

SEC. 32 TWP. 17-S RGE. 28-E

SURVEY N.M.P.M.

COUNTY EDDY STATE NEW MEXICO

DESCRIPTION 1750' FSL & 1765' FWL

ELEVATION 3680'

OPERATOR APACHE CORPORATION

LEASE AB STATE 647

U.S.G.S. TOPOGRAPHIC MAP  
RED LAKE, N.M.

## DIRECTIONS TO LOCATION

FROM THE INTERSECTION OF US, HWY. #82 AND CO. RD. #206.  
GO SOUTH ON CO. RD. #206 APPROX. 0.6 MILES TO THE  
LOCATION.

