

DISTRICT I
1625 N. French Dr., Hobbs, NM 88240
Phone: (575) 393-6161 Fax: (575) 393-0720

DISTRICT II
811 S. First St., Artesia, NM 88210
Phone: (575) 748-1283 Fax: (575) 748-9720

DISTRICT III
1000 Rio Brazos Road, Aztec, NM 87410
Phone: (505) 334-6178 Fax: (505) 334-6170

DISTRICT IV
1220 S. St. Francis Dr., Santa Fe, NM 87505
Phone: (505) 476-3460 Fax: (505) 476-3462

State of New Mexico
Energy, Minerals & Natural Resources Department
OIL CONSERVATION DIVISION
1220 South St. Francis Dr.
Santa Fe, New Mexico 87505

Form C-102
Revised August 1, 2011
Submit one copy to appropriate
District Office

AMENDED REPORT

WELL LOCATION AND ACREAGE DEDICATION PLAT

API Number 30-015- 41766	Pool Code 96830	Pool Name Artesia; Glorieta- Yeso
Property Code 40197	Property Name LIBBY STATE	Well Number 1
OGRID No. 873	Operator Name APACHE CORPORATION	Elevation 3659'

Surface Location

UL or lot No.	Section	Township	Range	Lot Idn	Feet from the	North/South line	Feet from the	East/West line	County
F	5	18-S	28-E		1910	NORTH	1505	WEST	EDDY

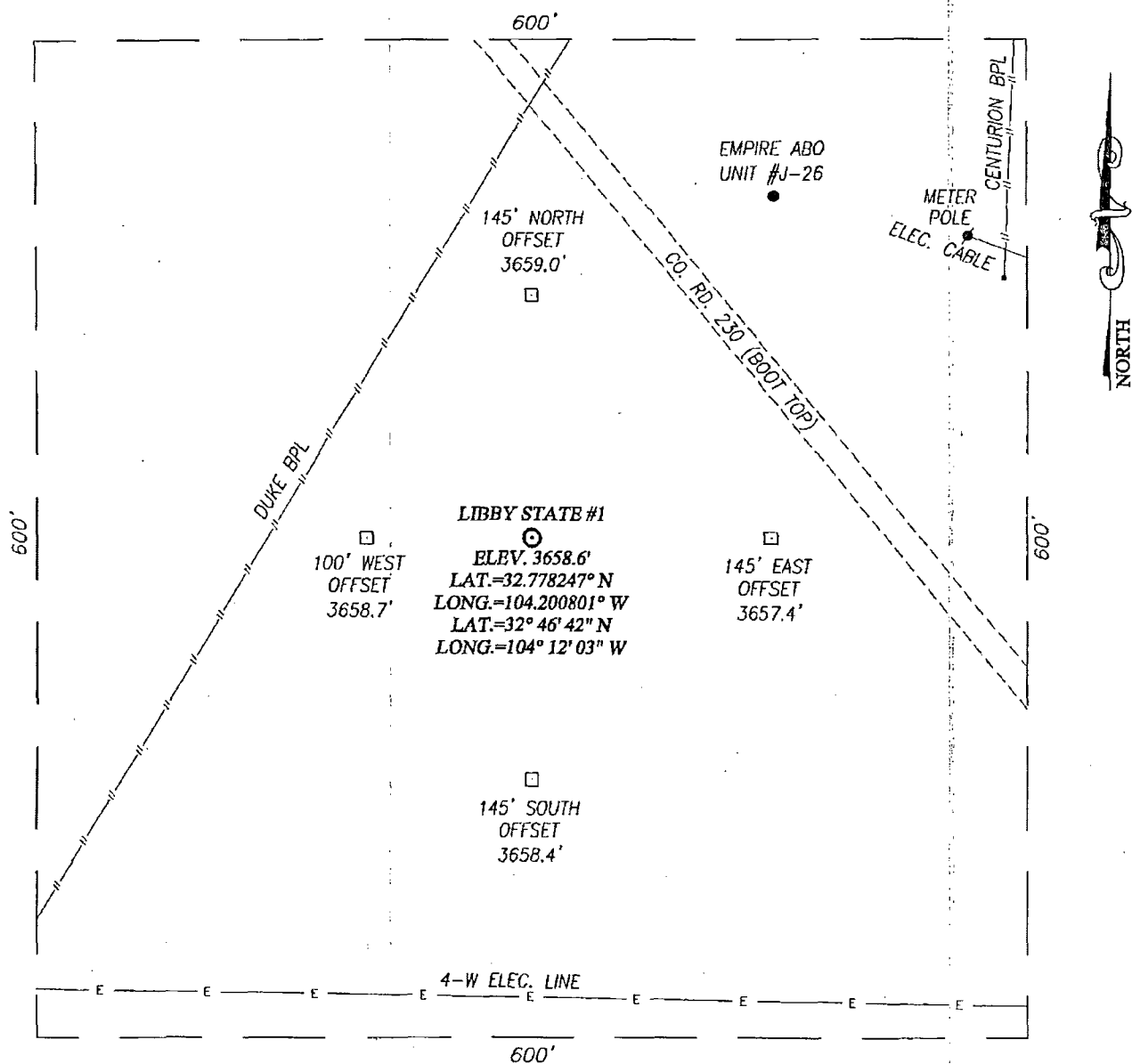
Bottom Hole Location If Different From Surface

UL or lot No.	Section	Township	Range	Lot Idn	Feet from the	North/South line	Feet from the	East/West line	County
F	5	18-S	28-E		1675	NORTH	1675	WEST	EDDY

Dedicated Acres	Joint or Infill	Consolidation Code	Order No.
40			

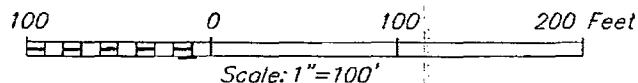
NO ALLOWABLE WILL BE ASSIGNED TO THIS COMPLETION UNTIL ALL INTERESTS HAVE BEEN CONSOLIDATED OR A NON-STANDARD UNIT HAS BEEN APPROVED BY THE DIVISION

	<p>GEODETIC COORDINATES NAD 27 NME</p> <p>SURFACE LOCATION Y=646862.7 N X=540733.4 E</p> <p>LAT.=32.778247° N LONG.=104.200801° W</p> <p>LAT.=32° 46' 42" N LONG.=104° 12' 03" W</p> <p>BOTTOM HOLE LOCATION Y=647101.1 N X=540904.0 E</p> <p>CORNER COORDINATES TABLE</p> <p>A - Y=647440.4 N, X=540530.2 E B - Y=647470.3 N, X=541830.2 E C - Y=646119.1 N, X=540526.2 E D - Y=646146.2 N, X=541825.8 E</p>	<p>OPERATOR CERTIFICATION</p> <p>I hereby certify that the information herein is true and complete to the best of my knowledge and belief, and that this organization either owns a working interest or unleased mineral interest in the land including the proposed bottom hole location or has a right to drill this well at this location pursuant to a contract with an owner of such mineral or working interest, or to a voluntary pooling agreement or a compulsory pooling order heretofore entered by the division.</p> <p><i>Michelle Cooper</i> 10-29-13 Signature Date</p> <p><i>Michelle Cooper</i> Printed Name</p> <p><i>michelle.cooper@apachecorp.com</i> E-mail Address</p>
	<p>SURVEYOR CERTIFICATION</p> <p>I hereby certify that the well location shown on this plat was plotted from field notes of actual surveys made by me or under my supervision, and that the same is true and correct to the best of my belief.</p> <p>AUGUST 26, 2013</p> <p>Date of Survey</p> <p>Signature of Professional Surveyor: <i>Ronald J. Eidson</i></p> <p>NEW MEXICO 3239</p> <p><i>Ronald J. Eidson</i> 89/05/2013 Certificate Number City of Eidson 12641 Professional Surveyor Ronald J. Eidson 3239</p> <p>BKLACK JWSC W.O.: 13.11.0939</p>	



DIRECTIONS TO LOCATION

FROM THE INTERSECTION OF COUNTY RD. 230 (BOOT TOP) AND COUNTY RD. 201 (ILLINOIS CAMP RD.) GO SOUTHEAST APPROX. 0.4 MILES. THIS STAKED LOCATION IS 200 FEET SOUTH.



APACHE CORPORATION

LIBBY STATE #1 WELL
 LOCATED 1910 FEET FROM THE NORTH LINE
 AND 1505 FEET FROM THE WEST LINE OF SECTION 5,
 TOWNSHIP 18 SOUTH, RANGE 28 EAST, N.M.P.M.,
 EDDY COUNTY, NEW MEXICO

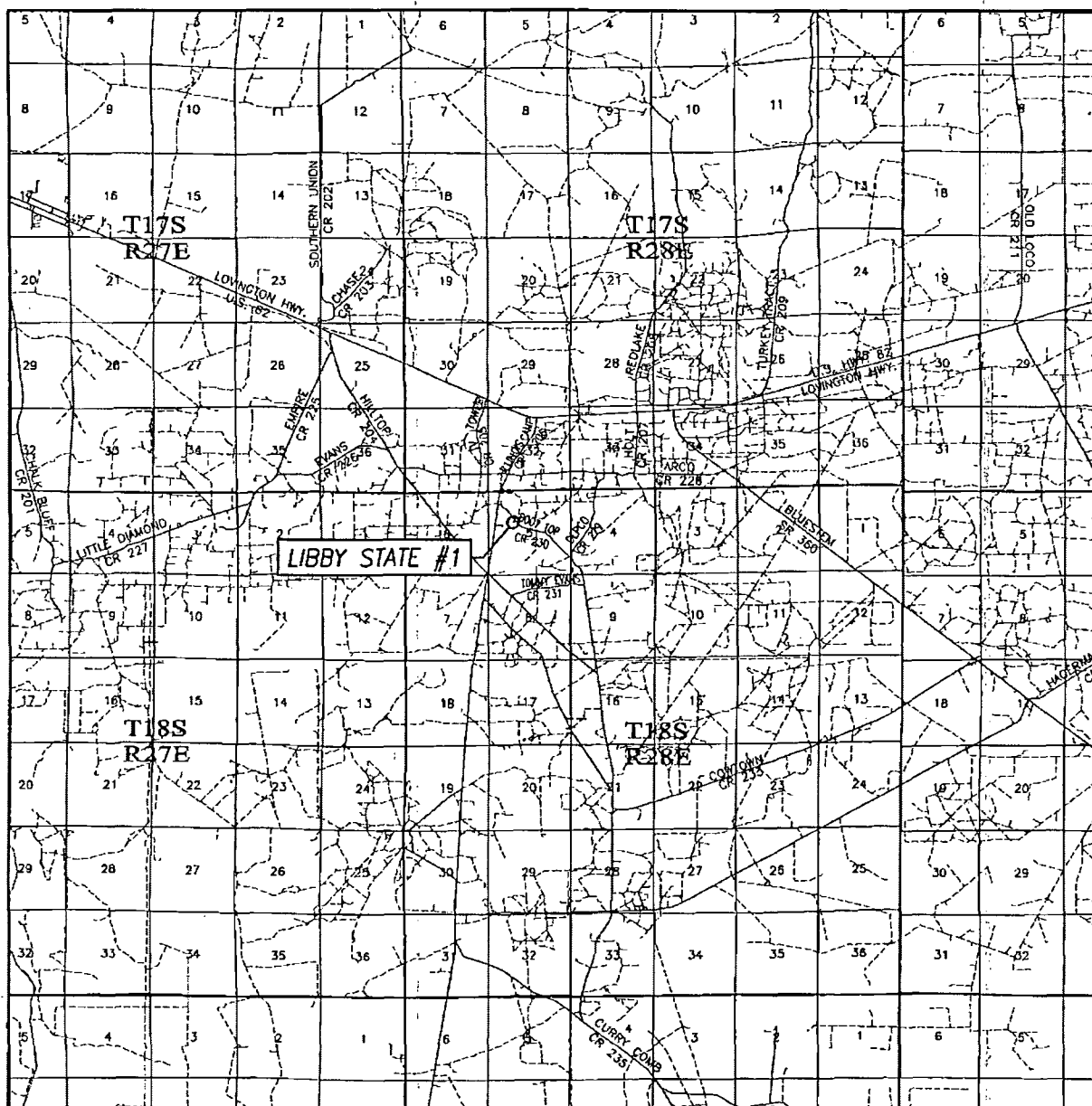


PROVIDING SURVEYING SERVICES
 SINCE 1946
JOHN WEST SURVEYING COMPANY
 412 N. DAL PASO
 HOBBS, N.M. 88240
 (575) 393-3117 www.jwsc.biz

Survey Date: 8/26/13	CAD Date: 9/3/13	Drawn By: BKL
W.O. No.: 13110939	Rev.:	Rel. W.O.:


Sheet 1 of 1

VICINITY MAP



SCALE: 1" = 2 MILES

SEC. 5 TWP. 18-S RGE. 28-E
 SURVEY N.M.P.M.
 COUNTY EDDY STATE NEW MEXICO
 DESCRIPTION 1910' FNL & 1505' FWL
 ELEVATION 3659'
 OPERATOR APACHE CORPORATION
 LEASE LIBBY STATE



PROVIDING SURVEYING SERVICES
 SINCE 1946
JOHN WEST SURVEYING COMPANY
 412 N. DAL PASO
 HOBBS, N.M. 88240
 (575) 393-3117 www.jwsc.biz