

DISTRICT I
1625 N. French Dr., Hobbs, NM 88240
Phone: (575) 393-6161 Fax: (575) 393-0720

DISTRICT II
811 S. First St., Artesia, NM 88210
Phone: (575) 748-1283 Fax: (575) 748-9720

DISTRICT III
1000 Rio Brazos Road, Aztec, NM 87410
Phone: (505) 334-6178 Fax: (505) 334-6170

DISTRICT IV
1220 S. St. Francis Dr., Santa Fe, NM 87505
Phone: (505) 476-3460 Fax: (505) 476-3462

State of New Mexico
Energy, Minerals & Natural Resources Department
OIL CONSERVATION DIVISION
1220 South St. Francis Dr.
Santa Fe, New Mexico 87505

Form C-102
Revised August 1, 2011
Submit one copy to appropriate
District Office

☐ AMENDED REPORT

WELL LOCATION AND ACREAGE DEDICATION PLAT

API Number 30-015-41772	Pool Code 96830	Pool Name Artesia; Glorieta - Yeso
Property Code 40198	Property Name TREX STATE	Well Number 3
OGRID No. 873	Operator Name APACHE CORPORATION	Elevation 3695'

Surface Location

UL or lot No.	Section	Township	Range	Lot Idn	Feet from the	North/South line	Feet from the	East/West line	County
B	31	17-S	28-E		875	NORTH	2430	EAST	EDDY

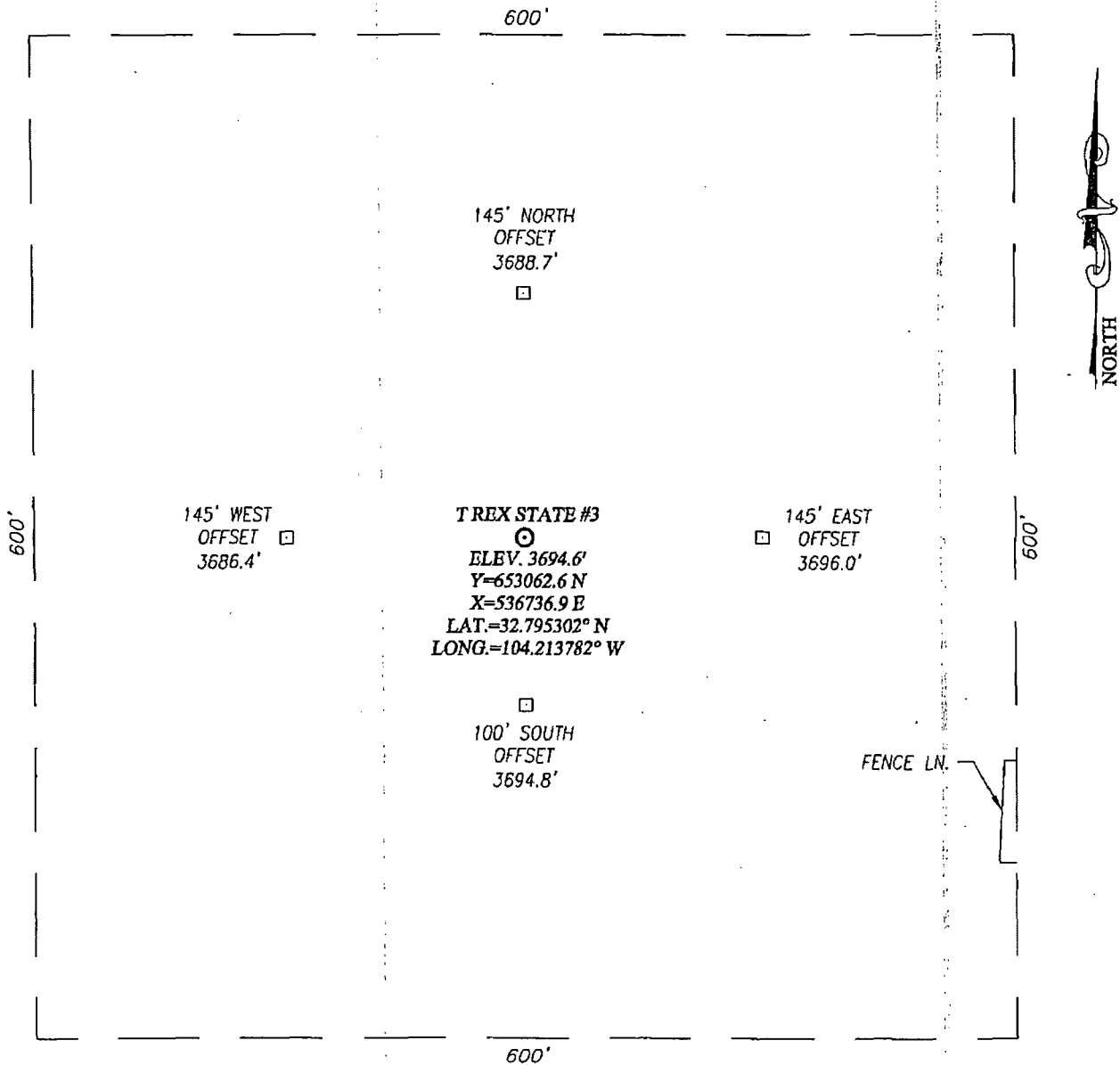
Bottom Hole Location If Different From Surface

UL or lot No.	Section	Township	Range	Lot Idn	Feet from the	North/South line	Feet from the	East/West line	County

Dedicated Acres	Joint or Infill	Consolidation Code	Order No.
40			

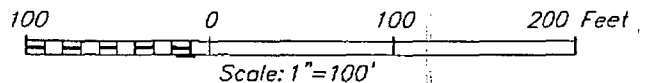
NO ALLOWABLE WILL BE ASSIGNED TO THIS COMPLETION UNTIL ALL INTERESTS HAVE BEEN CONSOLIDATED OR A NON-STANDARD UNIT HAS BEEN APPROVED BY THE DIVISION

<p>GEODETIC COORDINATES NAD 27 NME</p> <p>SURFACE LOCATION Y=653062.6 N X=536736.9 E</p> <p>LAT.=32.795302° N LONG.=104.213782° W</p> <p>LAT.=32° 47' 43" N LONG.=104° 12' 50" W</p>	<p>OPERATOR CERTIFICATION</p> <p>I hereby certify that the information herein is true and complete to the best of my knowledge and belief, and that this organization either owns a working interest or unleased mineral interest in the land including the proposed bottom hole location or has a right to drill this well at this location pursuant to a contract with an owner of such mineral or working interest, or to a voluntary pooling agreement or a compulsory pooling order heretofore entered by the division.</p> <p><i>Michelle Cooper</i> 10-30-13 Signature Date</p> <p><i>Michelle Cooper</i> Printed Name</p> <p><i>michelle.cooper@apachecorp.com</i> E-mail Address</p>
	<p>SURVEYOR CERTIFICATION</p> <p>I hereby certify that the well location shown on this plat was plotted from field notes of actual surveys made by me or under my supervision, and that the same is true and correct to the best of my belief.</p> <p>SEPTEMBER 16, 2013</p> <p>Date of Survey</p> <p>Signature of Professional Surveyor:</p> <p><i>Ronald J. Eidson</i> 9/25/2013 Certification Number: 3239</p> <p>BKL JWSC W.O.: 15.11.0915</p>



DIRECTIONS TO LOCATION

FROM THE INTERSECTION OF US. HIGHWAY 82 AND CO. RD. 205
(TV TOWER RD.) GO SOUTH APPROX. 0.4 MILES; TURN RIGHT
AND GO WEST APPROX. 0.3 MILES. THIS WELL LOCATION IS
APPROX. 450 FEET WEST OF THE LEASE ROAD.



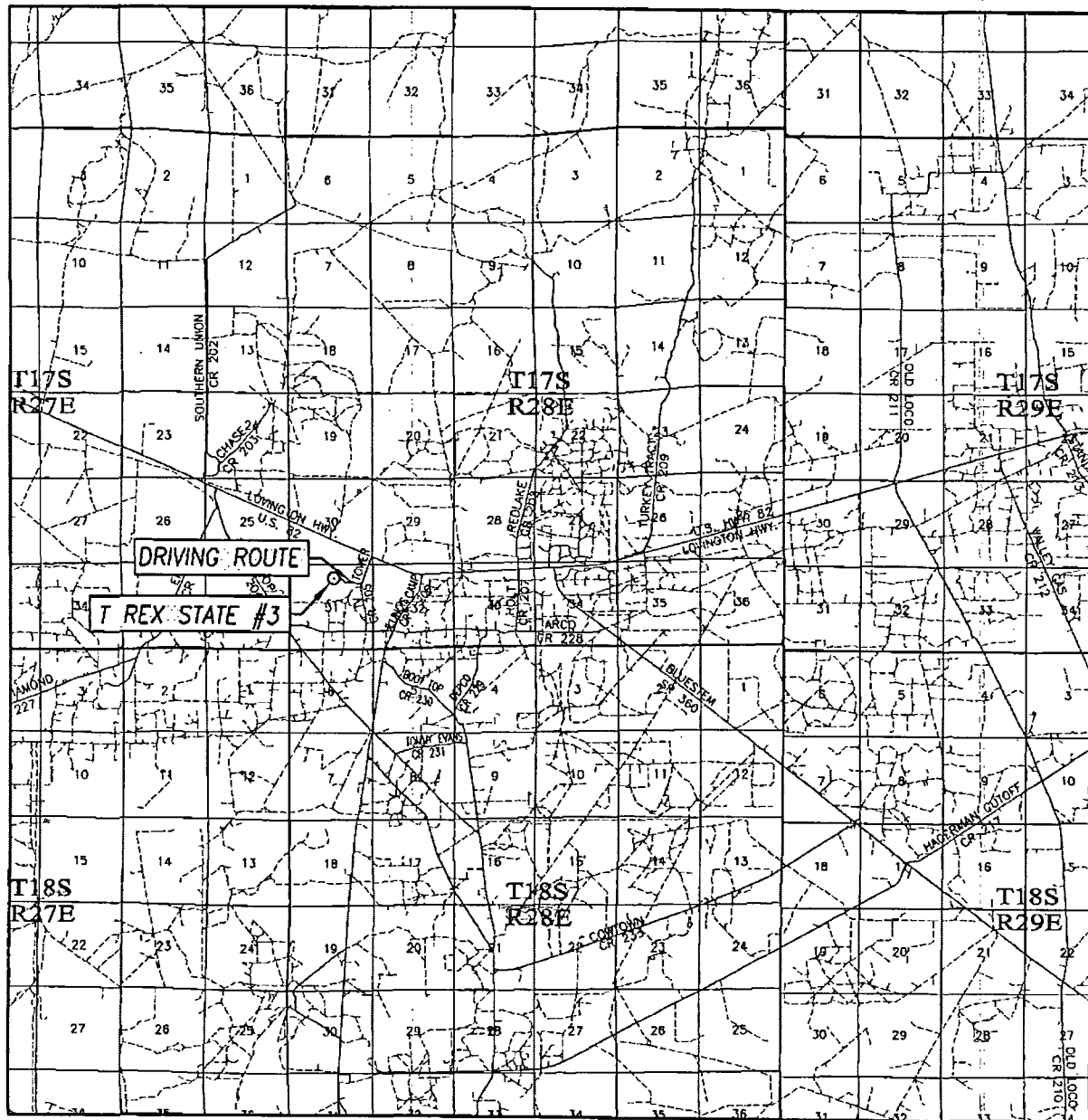
APACHE CORPORATION

T REX STATE #3 WELL
LOCATED 875 FEET FROM THE NORTH LINE
AND 2430 FEET FROM THE EAST LINE OF SECTION 31,
TOWNSHIP 17 SOUTH, RANGE 28 EAST, N.M.P.M.,
EDDY COUNTY, NEW MEXICO

PROVIDING SURVEYING SERVICES
SINCE 1946
JOHN WEST SURVEYING COMPANY
412 N. DAL PASO
HOBBS, N.M. 88240
(575) 393-3117 www.jwsc.biz

Survey Date: 02/20/12	CAD Date: 9/24/13	Drawn By: BKL
W.O. No.: 13110945	Rev: .	Rel. W.O.: Sheet 1 of 1

VICINITY MAP



SCALE: 1" = 2 MILES

DRIVING ROUTE: SEE LOCATION MAP

SEC. 31 TWP. 17-S RGE. 28-E

SURVEY N.M.P.M.

COUNTY EDDY STATE NEW MEXICO

DESCRIPTION 875' FNL & 2430' FEL

ELEVATION 3695'

OPERATOR APACHE CORPORATION

LEASE T REX STATE

