

UNITED STATES  
DEPARTMENT OF THE INTERIOR  
BUREAU OF LAND MANAGEMENT

OCD Artesia

FORM APPROVED  
OMB NO. 1004-0137  
Expires: October 31, 2014

WELL COMPLETION OR RECOMPLETION REPORT AND LOG

1a. Type of Well ☒ Oil Well ☐ Gas Well ☐ Dry ☐ Other  
b. Type of Completion: ☒ New Well ☐ Work Over ☐ Deepen ☐ Plug Back ☐ Diff. Resrv.,  
Other: \_\_\_\_\_

2. Name of Operator  
Devon Energy Production Company, L.P.

3. Address 333 W. Sheridan Avenue  
Oklahoma City, Oklahoma 73102

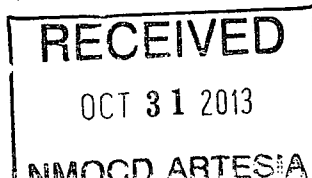
3a. Phone No. (include area code)  
405-228-4248

4. Location of Well (Report location clearly and in accordance with Federal requirements)\*

At surface 330' FNL & 1980' FEL, Unit B, Sec 11, T25S-R31E

At top prod. interval reported below

At total depth 390' FSL & 2008' FEL, Unit O, Sec 11, T25S-R31E



5. Lease Serial No.  
NM00503

6. If Indian, Allottee or Tribe Name

7. Unit or CA Agreement Name and No.  
Cotton Draw Unit; NMNM-070928-X

8. Lease Name and Well No.  
Cotton Draw Unit 164H

9. API Well No.  
30-015-39376

10. Field and Pool or Exploratory  
Paduca; Bone Spring (O)

11. Sec., T., R., M., on Block and  
Survey or Area  
Sec 11, T25S-R31E

12. County or Parish

Eddy

13. State

NM

14. Date Spudded  
04/22/2013

15. Date T.D. Reached  
05/15/2013

16. Date Completed ~~06/10/2013~~  
☐ D & A ☒ Ready to Prod.

17. Elevations (DF, RKB, RT, GL)\*  
3433.7' GL

18. Total Depth: MD 14620'  
TVD 10443'

19. Plug Back T.D.: MD 14341'  
TVD

20. Depth Bridge Plug Set: MD  
TVD

21. Type Electric & Other Mechanical Logs Run (Submit copy of each)  
CBL

22. Was well cored? ☒ No ☐ Yes (Submit analysis)  
Was DST run? ☒ No ☐ Yes (Submit report)  
Directional Survey? ☐ No ☒ Yes (Submit copy)

23. Casing and Liner Record (Report all strings set in well)

Hole Size	Size/Grade	Wt. (#/ft.)	Top (MD)	Bottom (MD)	Stage Cementer Depth	No. of Sks. & Type of Cement	Slurry Vol. (BBL)	Cement Top*	Amount Pulled
17 1/2"	13 3/8"	48#	0	781'		1000 sx CI C		0	
12 1/4"	9 5/8"	40#	0	4368'		1400 sx CI C		0	
8 3/4"	5 1/2"	17#	0	14359'	Stage 1	2642 sx CI H		4132'	
					Stage 2	368 sx CI C			

24. Tubing Record

Size	Depth Set (MD)	Packer Depth (MD)	Size	Depth Set (MD)	Packer Depth (MD)	Size	Depth Set (MD)	Packer Depth (MD)
2 7/8"	10043'							

25. Producing Intervals

Formation	Top	Bottom	Perforated Interval	Size	No. Holes	Perf. Status
A) Bone Spring	10760	14302'	10760 - 14302'		360	open
B)						
C)						
D)						

27. Acid, Fracture, Treatment, Cement Squeeze, etc.

Depth Interval	Amount and Type of Material
10760 - 14302' (10 stages)	30K gals 7.5% HCL, 245k gals, slick wtr, 65K 100 mesh sd, 1557K # 30/50 white sd, 1098K # 20/40 Siber Prop

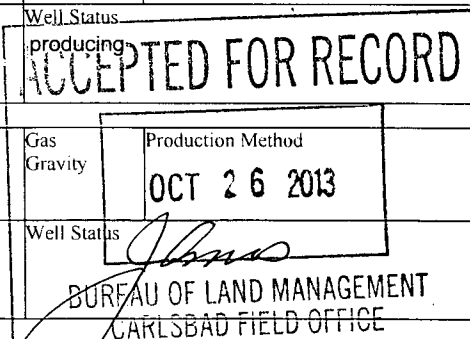
28. Production - Interval A

Date First Produced	Test Date	Hours Tested	Test Production	Oil BBL	Gas MCF	Water BBL	Oil Gravity Corr. API	Gas Gravity	Production Method
6/10/13	6/28/13	24	→	1216	1307	1604			pumping
Choke Size	Tbg. Press. Flwg. SI	Csg. Press.	24 Hr. Rate	Oil BBL	Gas MCF	Water BBL	Gas/Oil Ratio	Well Status	
		1650#	→					producing	

RECLAMATION  
DUE 12-10-13

28a. Production - Interval B

Date First Produced	Test Date	Hours Tested	Test Production	Oil BBL	Gas MCF	Water BBL	Oil Gravity Corr. API	Gas Gravity	Production Method
			→						
Choke Size	Tbg. Press. Flwg. SI	Csg. Press.	24 Hr. Rate	Oil BBL	Gas MCF	Water BBL	Gas/Oil Ratio	Well Status	
			→						



\*(See instructions and spaces for additional data on page 2)

## 28b. Production - Interval C

Date First Produced	Test Date	Hours Tested	Test Production	Oil BBL	Gas MCF	Water BBL	Oil Gravity Corr. API	Gas Gravity	Production Method
			→						
Choke Size	Tbg. Press. Flwg. SI	Csg. Press.	24 Hr. Rate	Oil BBL	Gas MCF	Water BBL	Gas/Oil Ratio	Well Status	
			→						

## 28c. Production - Interval D

Date First Produced	Test Date	Hours Tested	Test Production	Oil BBL	Gas MCF	Water BBL	Oil Gravity Corr. API	Gas Gravity	Production Method
			→						
Choke Size	Tbg. Press. Flwg. SI	Csg. Press.	24 Hr. Rate	Oil BBL	Gas MCF	Water BBL	Gas/Oil Ratio	Well Status	
			→						

29. Disposition of Gas (Solid, used for fuel, vented, etc.) sold

## 30. Summary of Porous Zones (Include Aquifers):

Show all important zones of porosity and contents thereof: Cored intervals and all drill-stem tests, including depth interval tested, cushion used, time tool open, flowing and shut-in pressures and recoveries.

## 31. Formation (Log) Markers

Formation	Top	Bottom	Descriptions, Contents, etc.	Name	Top
					Meas. Depth
				Rustler	680'
				Salado	1009'
				Base of Salt	4160'
				Delaware	4390'
				Bone Spring	8245'

32. Additional remarks (include plugging procedure):

33. Indicate which items have been attached by placing a check in the appropriate boxes:

- ☒ Electrical/Mechanical Logs (1 full set req'd.)
 ☐ Geologic Report
 ☐ DST Report
 ☒ Directional Survey
- ☐ Sundry Notice for plugging and cement verification
 ☐ Core Analysis
 ☐ Other:

34. I hereby certify that the foregoing and attached information is complete and correct as determined from all available records (see attached instructions)\*

Name (please print) Patti RiechersTitle Regulatory Specialist

Signature

Patti RiechersDate 09/26/2013

Title 18 U.S.C. Section 1001 and Title 43 U.S.C. Section 1212, make it a crime for any person knowingly and willfully to make to any department or agency of the United States any false, fictitious or fraudulent statements or representations as to any matter within its jurisdiction.

(Continued on page 3)

(Form 3160-4, page 2)