

PP: 1223 FNL & 299 FEL Sec. 9-21S-27E

Project Area:

Producing Area:

17 OPERATOR CERTIFICATION

I hereby certify that the information contained herein is true and complete to the best of my knowledge and belief, and that this organization either owns a working interest or unleased mineral interest in the land including the proposed bottom hole location or has a right to drill this well at this location pursuant to a contract with an owner of such a mineral or working interest, or to a voluntary pooling agreement or a compulsory pooling order heretofore entered by the division.

N/4 CORNER SEC. 9
LAT. = 32.5026941"N
LONG. = 104.1948747"W
NWSP EAST (FT)
N = 546421.14
E = 584022.45

SECTION CORNER
LAT. = 32.5019101"N
LONG. = 104.1882429"W
NWSP EAST (FT)
N = 546356.91
E = 586683.66

N/4 CORNER SEC. 10
LAT. = 32.5019674"N
LONG. = 104.1778174"W
NWSP EAST (FT)
N = 546381.64
E = 589342.77

NE CORNER SEC. 10
LAT. = 32.5020183"N
LONG. = 104.1689954"W
NWSP EAST (FT)
N = 546403.31
E = 592000.82

CERT 10 FEDERAL SH
ELEV. = 3211.8'
LAT. = 32.4984269"N (NAD83)
LONG. = 104.1872552"W
NWSP EAST (FT)
N = 545089.31
E = 586373.32

1275'

300'

SURFACE LOCATION

330'

BOTTOM OF HOLE

LAT. = 32.5001983"N
LONG. = 104.1700979"W
NWSP EAST (FT)
N = 545740.88
E = 591661.94

1/4 CORNER
LAT. = 32.4948588"N
LONG. = 104.1853247"W
NWSP EAST (FT)
N = 543718.88
E = 586862.09

E/4 CORNER SEC. 10
LAT. = 32.4947873"N
LONG. = 104.1691234"W
NWSP EAST (FT)
N = 543773.38
E = 591965.39

SEC. 9

SEC. 10

18 SURVEYOR CERTIFICATION

I hereby certify that the well location shown on this plat was plotted from field notes of actual surveys made by me or under my supervision, and that the same is true and correct to the best of my belief.

OCTOBER 12, 2012, C.W.A.

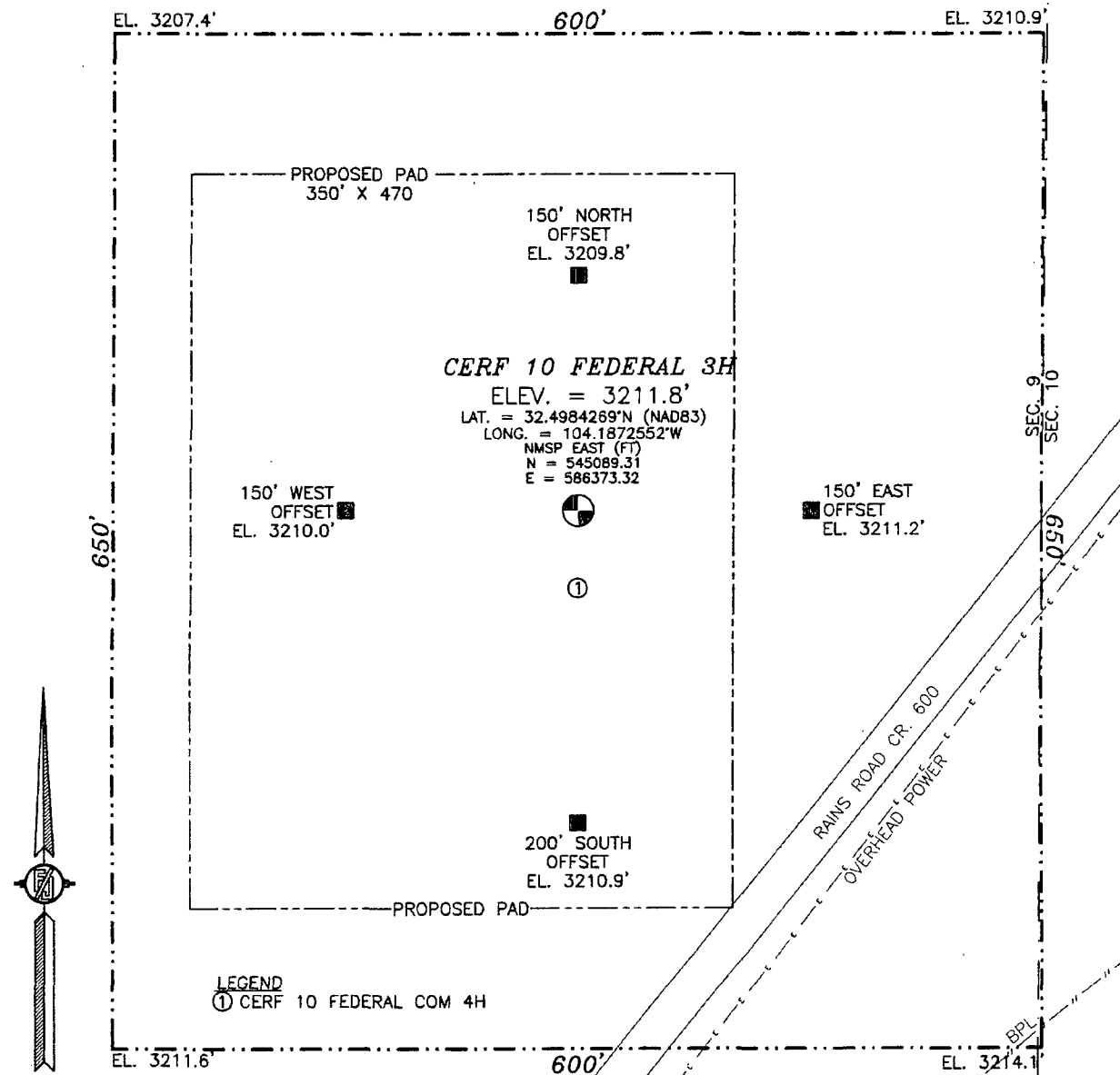
Date of Survey

Signature and Seal of Professional Surveyor

Certificate Number: 11181003, J. KRAMILLO, PLS 12797

SURVEY NO. 1061A

SECTION 9, TOWNSHIP 21 SOUTH, RANGE 27 EAST, N.M.P.M.
EDDY COUNTY, STATE OF NEW MEXICO



010 50 100 200

SCALE 1" = 100'
DIRECTIONS TO LOCATION

FROM THE INTERSECTION OF ILLINOIS CAMP ROAD (CR 208) AND
RAINS ROAD (CR 600) GO EAST ON RAINS ROAD PAST RAMBO
BOOSTER STA. 2.2 MILES TO ROAD INTERSECTION ON CALICHE ROAD
GO EAST ON CALICHE ROAD, ROAD BENDS NORTHEAST 0.25 MILES
SITE IS ON LEFT.

DEVON ENERGY PRODUCTION COMPANY, L.P.
CERF 10 FEDERAL 3H

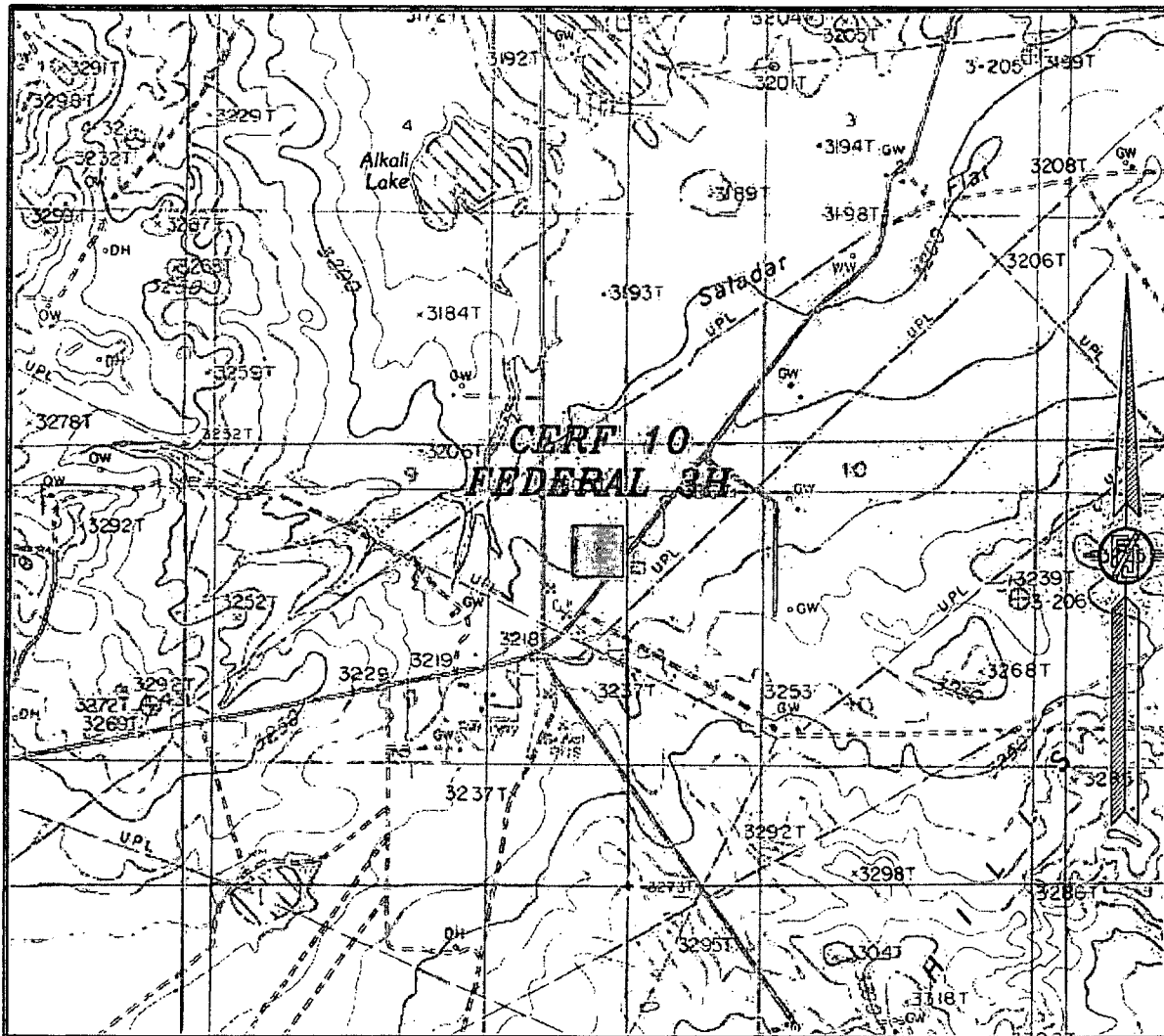
LOCATED 1275 FT. FROM THE NORTH LINE
AND 300 FT. FROM THE EAST LINE OF
SECTION 9, TOWNSHIP 21 SOUTH,
RANGE 27 EAST, N.M.P.M.
EDDY COUNTY, STATE OF NEW MEXICO

OCTOBER 12, 2012

MADRON SURVEYING, INC. 301 SOUTH CANAL CARLSBAD, NEW MEXICO
(575) 234-3341

SURVEY NO. 1061A

SECTION 9, TOWNSHIP 21 SOUTH, RANGE 27 EAST, N.M.P.M.
EDDY COUNTY, STATE OF NEW MEXICO
LOCATION VERIFICATION MAP



USGS QUAD MAP:
CARLSBAD EAST

NOT TO SCALE

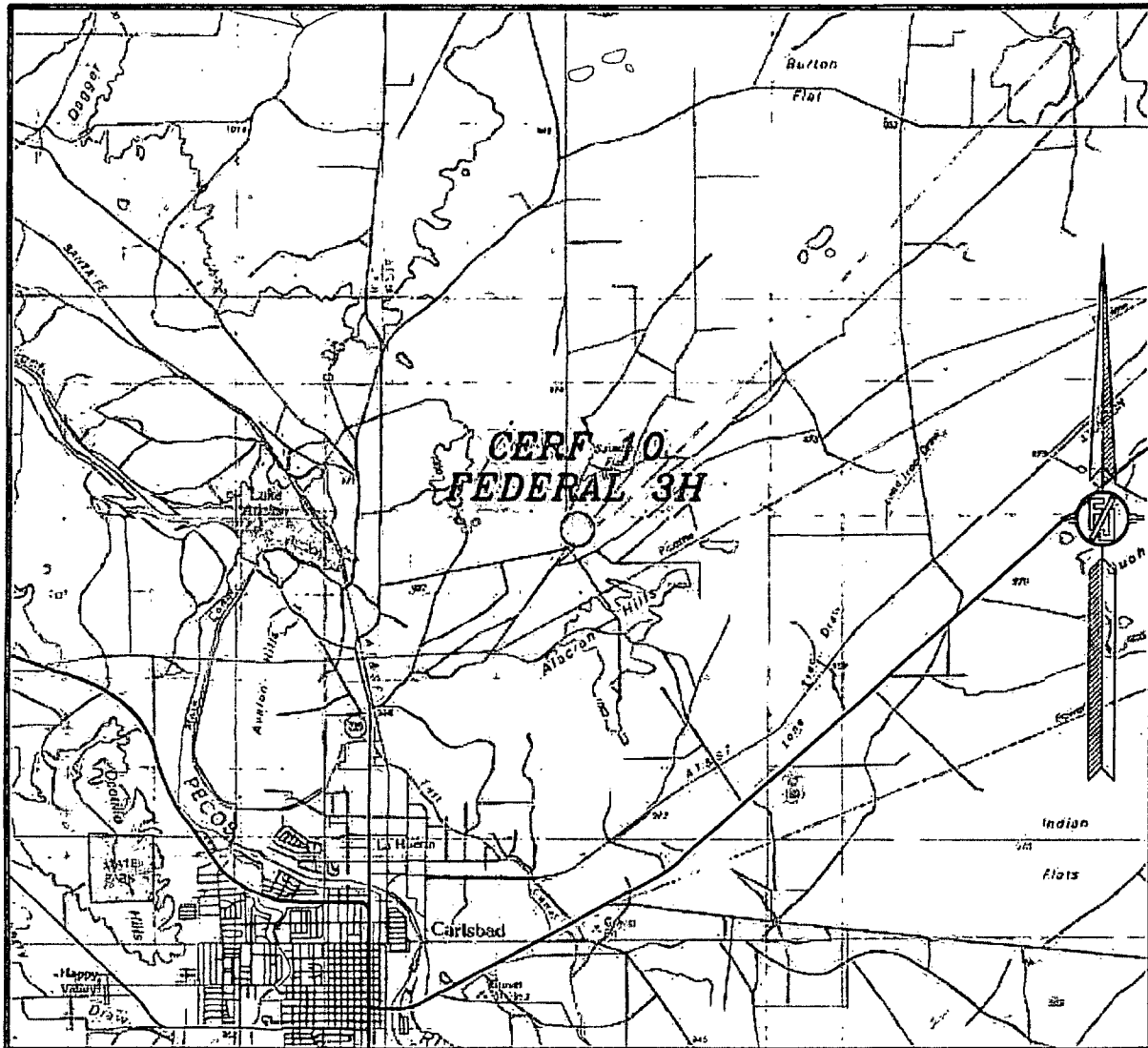
DEVON ENERGY PRODUCTION COMPANY, L.P.
CERF 10 FEDERAL 3H

LOCATED 1275 FT. FROM THE NORTH LINE
AND 300 FT. FROM THE EAST LINE OF
SECTION 9, TOWNSHIP 21 SOUTH,
RANGE 27 EAST, N.M.P.M.
EDDY COUNTY, STATE OF NEW MEXICO

OCTOBER 12, 2012

MADRON SURVEYING, INC. 301 SOUTH CANAL (575) 234-3341 CARLSBAD, NEW MEXICO SURVEY NO. 1061A

SECTION 9, TOWNSHIP 21 SOUTH, RANGE 27 EAST, N.M.P.M.
EDDY COUNTY, STATE OF NEW MEXICO
VICINITY MAP



NOT TO SCALE

DEVON ENERGY PRODUCTION COMPANY, L.P.
CERF 10 FEDERAL 3H

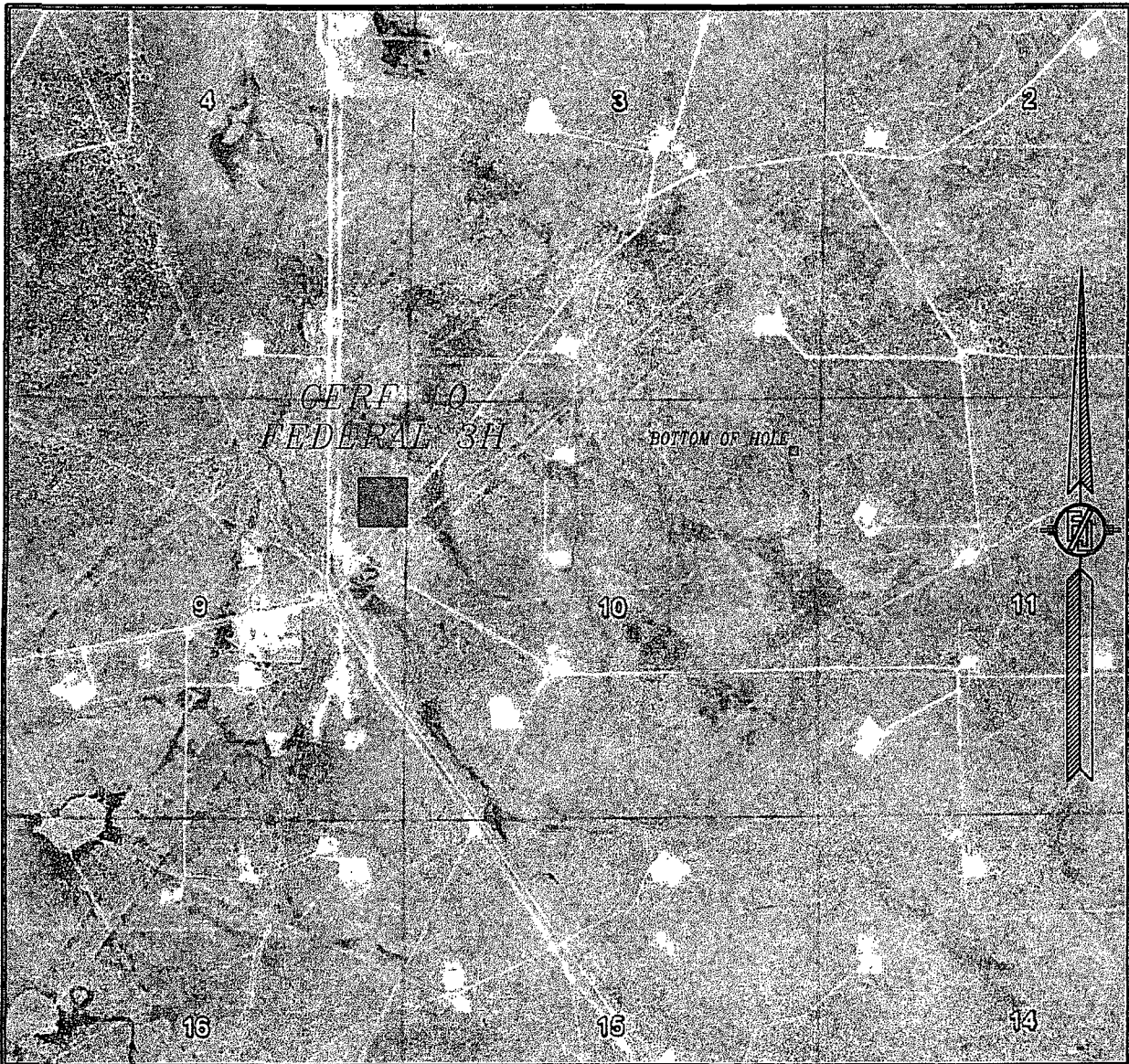
LOCATED 1275 FT. FROM THE NORTH LINE
AND 300 FT. FROM THE EAST LINE OF
SECTION 9, TOWNSHIP 21 SOUTH,
RANGE 27 EAST, N.M.P.M.
EDDY COUNTY, STATE OF NEW MEXICO

OCTOBER 12, 2012

SURVEY NO. 1061A

MADRON SURVEYING, INC. 301 SOUTH CANAL CARLSBAD, NEW MEXICO
(575) 234-3344

SECTION 9, TOWNSHIP 21 SOUTH, RANGE 27 EAST, N.M.P.M.
EDDY COUNTY, STATE OF NEW MEXICO
AERIAL PHOTO



NOT TO SCALE
AERIAL PHOTO:
GOOGLE EARTH
JUNE 2011

DEVON ENERGY PRODUCTION COMPANY, L.P.
CERF 10 FEDERAL 3H

LOCATED 1275 FT. FROM THE NORTH LINE
AND 300 FT. FROM THE EAST LINE OF
SECTION 9, TOWNSHIP 21 SOUTH,
RANGE 27 EAST, N.M.P.M.
EDDY COUNTY, STATE OF NEW MEXICO

OCTOBER 12, 2012

SURVEY NO. 1061A

MADRON SURVEYING, INC. 301 SOUTH CANAL (575) 234-3341 CARLSBAD, NEW MEXICO