

DISTRICT I
1625 N. French Dr., Hobbs, NM 88240
Phone (575) 393-6161 Fax: (575) 393-0720

DISTRICT II
811 S. First St., Artesia, NM 88210
Phone (575) 748-1283 Fax: (575) 748-9720

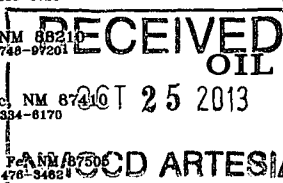
DISTRICT III
1000 Rio Brazos Rd., Aztec, NM 87410
Phone (505) 334-6178 Fax: (505) 334-6170

DISTRICT IV
1220 S. St. Francis Dr., Santa Fe, NM 87505
Phone (505) 476-3460 Fax: (505) 476-3462

State of New Mexico
Energy, Minerals and Natural Resources Department

Form C-102
Revised August 1, 2011

Submit one copy to appropriate
District Office



OIL CONSERVATION DIVISION

1220 South St. Francis Dr.
Santa Fe, New Mexico 87505

WELL LOCATION AND ACREAGE DEDICATION PLAT

☐ AMENDED REPORT

API Number 30-015-41754	Pool Code 40187	Pool Name North Seven River; Glorieta-Yeso
Property Code	Property Name SAVANNAH STATE COM	Well Number 3H
OGRID No. 025575	Operator Name YATES PETROLEUM CORPORATION	Elevation 3490

Surface Location

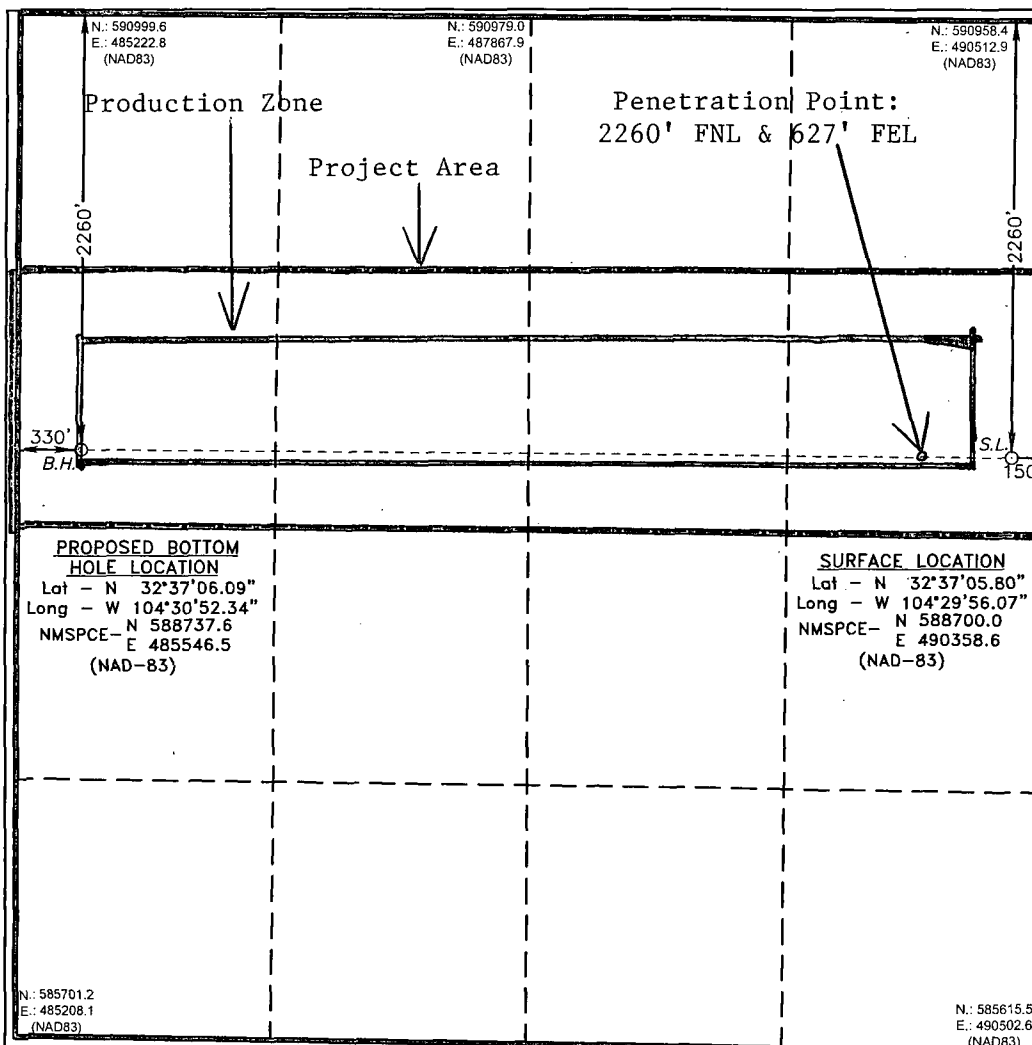
UL or lot No.	Section	Township	Range	Lot Idn	Feet from the	North/South line	Feet from the	East/West line	County
H	32	19 S	25 E		2260'	NORTH	150'	EAST	EDDY

Bottom Hole Location If Different From Surface

UL or lot No.	Section	Township	Range	Lot Idn	Feet from the	North/South line	Feet from the	East/West line	County
E	32	19 S	25 E		2260'	NORTH	330'	WEST	EDDY

Dedicated Acres 160	Joint or Infill	Consolidation Code	Order No.
------------------------	-----------------	--------------------	-----------

NO ALLOWABLE WILL BE ASSIGNED TO THIS COMPLETION UNTIL ALL INTERESTS HAVE BEEN CONSOLIDATED
OR A NON-STANDARD UNIT HAS BEEN APPROVED BY THE DIVISION



OPERATOR CERTIFICATION

I hereby certify that the information contained herein is true and complete to the best of my knowledge and belief, and that this organization either owns a working interest or unleased mineral interest in the land including the proposed bottom hole location or has a right to drill this well at this location pursuant to a contract with an owner of such a mineral or working interest, or to a voluntary pooling agreement or a compulsory pooling order heretofore entered by the division.

Travis Hahn 10/25/2013
Signature Date

Travis Hahn
Printed Name
thahn@yatespetroleum.com
Email Address

SURVEYOR CERTIFICATION

I hereby certify that the well location shown on this plat was plotted from field notes of actual surveys made by me or under my supervision and that the same is true and correct to the best of my belief.

OCTOBER 25 2013
Date Surveyed
Signature & Seal of Professional Surveyor

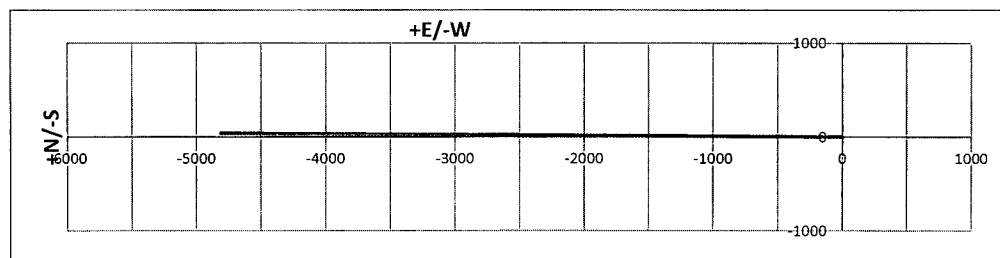
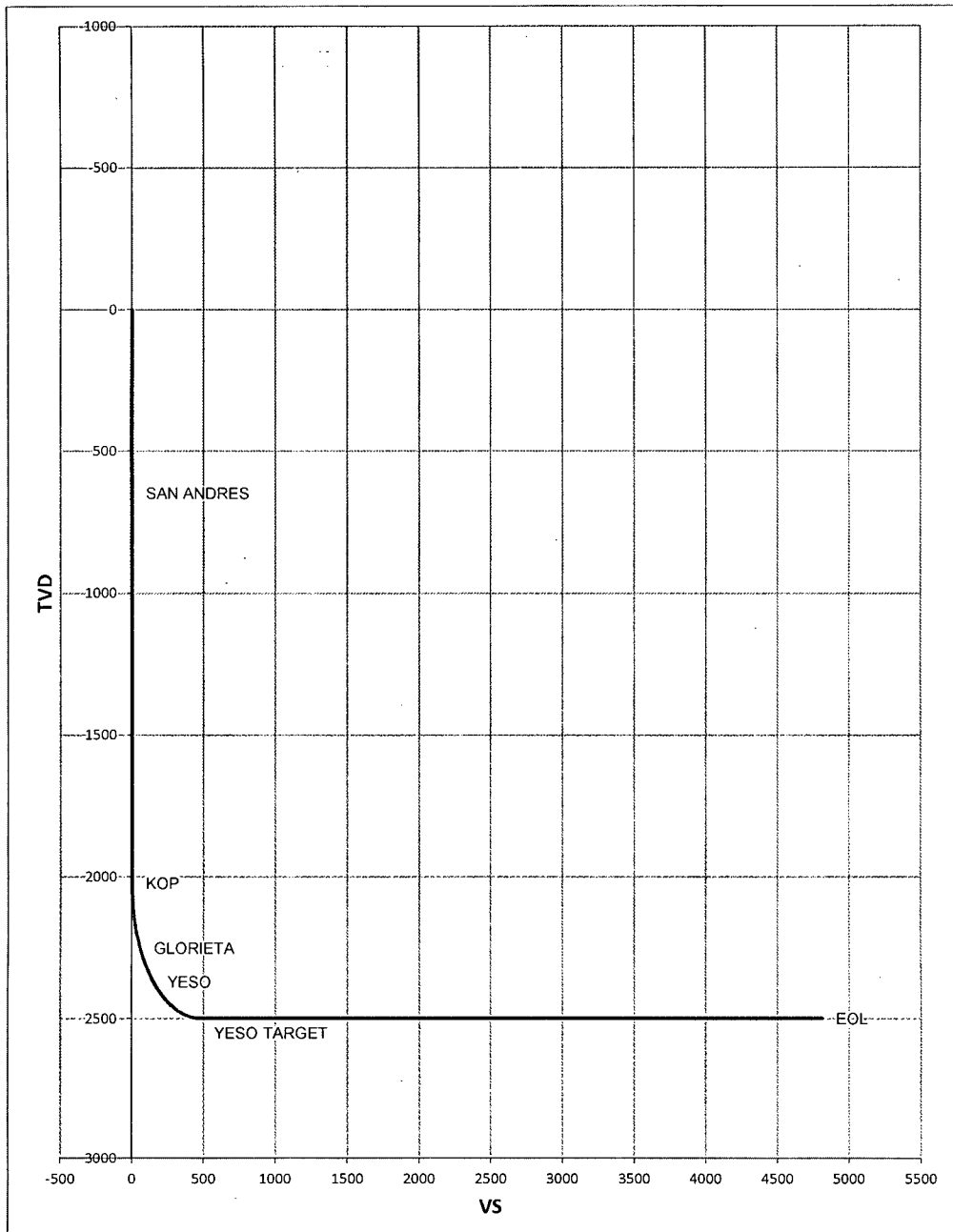
Certificate No. 7977
Copy of Survey Map
BASIC SURVEY

0' 500' 1000' 1500' 2000'
SCALE: 1" = 1000'
WO Num.: 29531

Well Name:	Savannah State Com #3H	Tgt N-S:	37.60	
		Tgt E-W:	-4812.10	EOC TVD/MD: 2500.00 / 2772.54
Surface Location:	Section 32 , Township 19S Range 25E	VS:	4812.25	
Bottom Hole Location:	Section 32 , Township 19S Range 25E	VS Az:	270.45	EOL TVD/MD: 2500.00 / 7107.32

MD	Inc.	Azi.	TVD	+N-S	+E-W	VS	DLS	Comments
0	0	0	0	0	0	0	0	
650.00	0.00	0.00	650.00	0.00	0.00	0.00	0.00	SAN ANDRES
2022.54	0.00	0.00	2022.54	0.00	0.00	0.00	0.00	KOP
2025.00	0.30	270.45	2025.00	0.00	-0.01	0.01	12.00	
2050.00	3.30	270.45	2049.98	0.01	-0.79	0.79	12.00	
2075.00	6.30	270.45	2074.89	0.02	-2.88	2.88	12.00	
2100.00	9.30	270.45	2099.66	0.05	-6.27	6.27	12.00	
2125.00	12.30	270.45	2124.22	0.09	-10.95	10.95	12.00	
2150.00	15.30	270.45	2148.49	0.13	-16.91	16.91	12.00	
2175.00	18.30	270.45	2172.42	0.19	-24.14	24.14	12.00	
2200.00	21.30	270.45	2195.94	0.25	-32.60	32.60	12.00	
2225.00	24.30	270.45	2218.99	0.33	-42.29	42.29	12.00	
2250.00	27.30	270.45	2241.49	0.42	-53.16	53.17	12.00	
2259.62	28.45	270.45	2250.00	0.45	-57.66	57.66	12.00	GLORIETA
2275.00	30.30	270.45	2263.40	0.51	-65.20	65.21	12.00	
2300.00	33.30	270.45	2284.64	0.61	-78.37	78.38	12.00	
2325.00	36.30	270.45	2305.17	0.72	-92.64	92.64	12.00	
2350.00	39.30	270.45	2324.93	0.84	-107.96	107.96	12.00	
2375.00	42.30	270.45	2343.85	0.97	-124.29	124.29	12.00	
2400.00	45.30	270.45	2361.89	1.11	-141.59	141.59	12.00	
2411.66	46.69	270.45	2370.00	1.17	-149.97	149.97	12.00	YESO
2425.00	48.30	270.45	2379.01	1.25	-159.81	159.81	12.00	
2450.00	51.30	270.45	2395.14	1.40	-178.90	178.91	12.00	
2475.00	54.30	270.45	2410.26	1.55	-198.81	198.82	12.00	
2500.00	57.30	270.45	2424.31	1.71	-219.48	219.49	12.00	
2525.00	60.30	270.45	2437.26	1.88	-240.86	240.87	12.00	
2550.00	63.30	270.45	2449.07	2.05	-262.89	262.90	12.00	
2575.00	66.30	270.45	2459.72	2.23	-285.51	285.52	12.00	
2600.00	69.30	270.45	2469.16	2.41	-308.65	308.66	12.00	
2625.00	72.30	270.45	2477.39	2.60	-332.26	332.27	12.00	
2650.00	75.30	270.45	2484.36	2.78	-356.26	356.27	12.00	
2675.00	78.30	270.45	2490.07	2.97	-380.59	380.61	12.00	
2700.00	81.30	270.45	2494.50	3.17	-405.20	405.21	12.00	
2725.00	84.30	270.45	2497.64	3.36	-429.99	430.01	12.00	
2750.00	87.30	270.45	2499.47	3.55	-454.92	454.94	12.00	
2772.54	90.00	270.45	2500.00	3.73	-477.45	477.46	12.00	YESO TARGET
7107.32	90.00	270.45	2500.00	37.60	-4812.10	4812.25	0.00	EOL

Savannah State Com #3H





**Yates Petroleum Corporation
105 S. Fourth Street
Artesia, NM 88210**

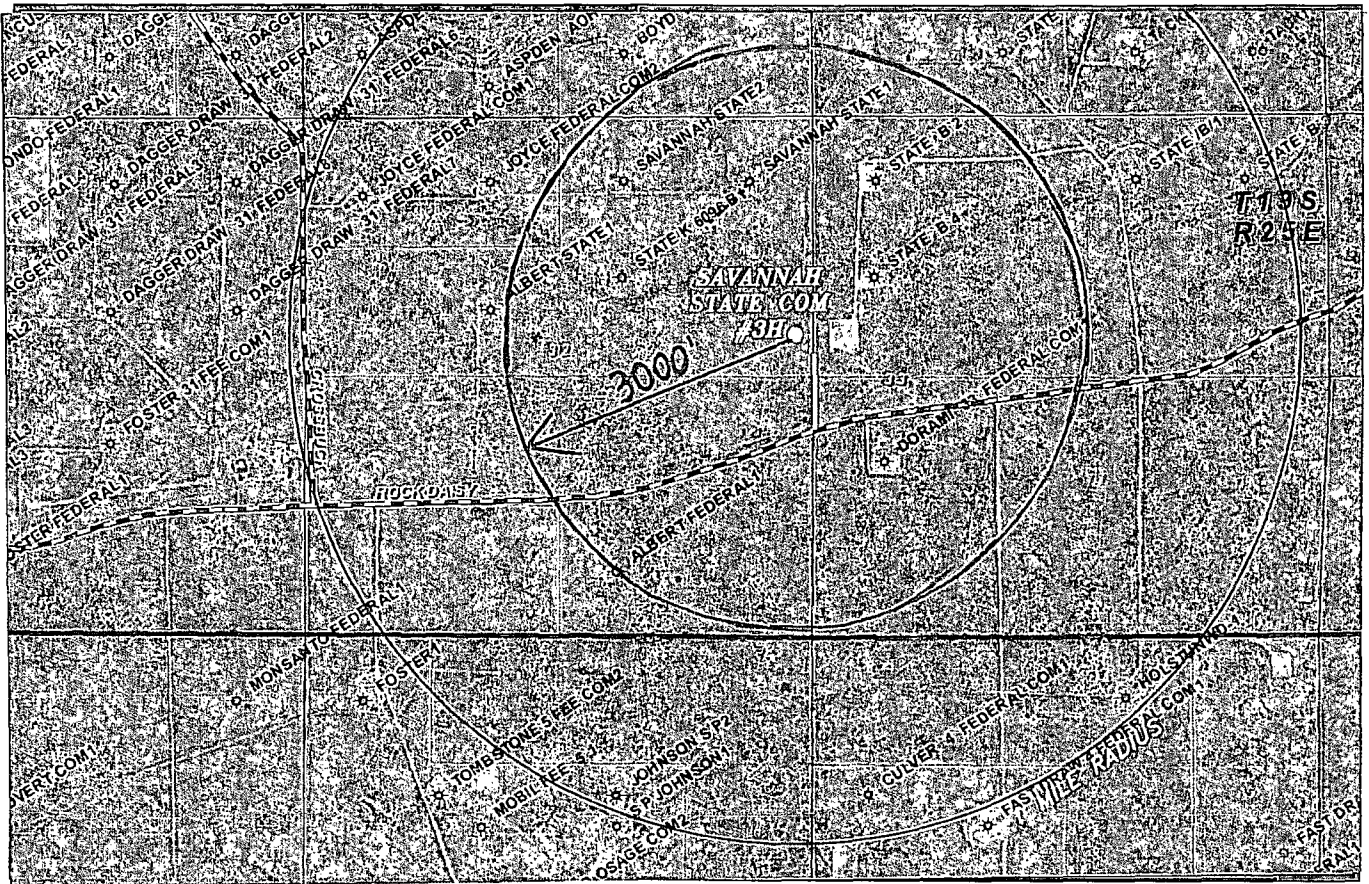
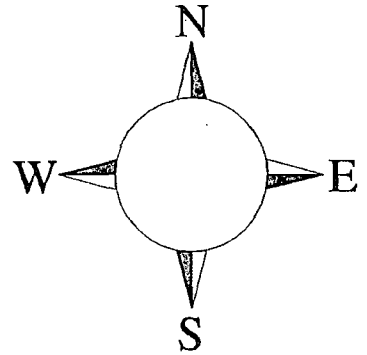
Hydrogen Sulfide (H₂S) Contingency Plan

For

**Savannah State Com #3H
2260' FNL & 150' FEL
Section 32, T19S-R25E
Eddy County, NM**

Savannah State Com #3H

This is an open drilling site. H₂S monitoring equipment and emergency response equipment will be used within 500' of zones known to contain H₂S, including warning signs, wind indicators and H₂S monitor.



Assumed 100 ppm ROE = 3000'

100 ppm H₂S concentration shall trigger activation of this plan.

Emergency Procedures

In the case of a release of gas containing H₂S, the first responder(s) must isolate the area and prevent entry by other persons into the 100 ppm ROE. Additionally the first responder(s) must evacuate any public places encompassed by the 100 ppm ROE. First responder(s) must take care not to injure themselves during this operation. Company and/or local officials must be contacted to aid in this operation. Evacuation of the public should be beyond the 100 ppm ROE.

All responders must have training in the detection of H₂S, measures for protection against the gas, equipment used for protection and emergency response. Additionally, responders must be equipped with H₂S monitors and air packs in order to control the release. Use the “buddy system” to ensure no injuries during the response.

Ignition of Gas Source

Should control of the well be considered lost and ignition considered, take care to protect against exposure to Sulfur Dioxide (SO₂). Intentional ignition must be coordinated with the NMOCD and local officials. Additionally the NM State Police may become involved. NM State Police shall be the Incident Command on scene of any major release. Take care to protect downwind whenever there is an ignition of the gas

Characteristics of H₂S and SO₂

Common Name	Chemical Formula	Specific Gravity	Threshold Limit	Hazardous Limit	Lethal Concentration
Hydrogen Sulfide	H ₂ S	1.189 Air = 1	10 ppm	100 ppm/hr	600 ppm
Sulfur Dioxide	SO ₂	2.21 Air = 1	2 ppm	N/A	1000 ppm

Contacting Authorities

YPC personnel must liaison with local and state agencies to ensure a proper response to a major release. Additionally, the OCD must be notified of the release as soon as possible but no later than 4 hours. Agencies will ask for information such as type and volume of release, wind direction, location of release, etc. Be prepared with all information available. The following call list of essential and potential responders has been prepared for use during a release. YPC Company response must be in coordination with the State of New Mexico’s ‘Hazardous Materials Emergency Response Plan’ (HMER)

Yates Petroleum Corporation Phone Numbers

YPC Office	(575) 748-1471
Wade Bennett/Prod Superintendent	(575) 748-4236
LeeRoy Richards/Assistant Prod Superintendent	(575) 748-4228
Mike Larkin/Drilling	(575) 748-4222
Paul Hanes/Prod. Foreman/Roswell	(575) 624-2805
Tim Bussell/Drilling Superintendent	(575) 748-4221
Artesia Answering Service	(575) 748-4302
(During non-office hours)	

Agency Call List

Eddy County (575)

Artesia

State Police	746-2703
City Police.....	746-2703
Sheriff's Office	746-9888
Ambulance.....	911
Fire Department	746-2701
LEPC (Local Emergency Planning Committee)	746-2122
NMOCD.....	748-1283

Carlsbad

State Police	885-3137
City Police.....	885-2111
Sheriff's Office	887-7551
Ambulance.....	911
Fire Department	885-2111
LEPC (Local Emergency Planning Committee).....	887-3798
US Bureau of Land Management.....	887-6544
New Mexico Emergency Response Commission (Santa Fe)	(505) 476-9600
24 HR	(505) 827-9126
New Mexico State Emergency Operations Center.....	(505) 476-9635
National Emergency Response Center (Washington, DC)	...(800) 424-8802

Other

Boots & Coots IWC	1-800-256-9688 or (281) 931-8884
Cudd Pressure Control.....	(915) 699-0139 or (915) 563-3356
Halliburton	(575) 746-2757
B. J. Services.....	(575) 746-3569

Flight For Life -4000 24th St, Lubbock, TX	(806) 743-9911
Aerocare -Rr 3 Box 49f, Lubbock, TX	(806) 747-8923
Med Flight Air Amb 2301 Yale Blvd SE #D3, Albuquerque, NM	(505) 842-4433
S B Air Med Svc 2505 Clark Carr Loop SE, Albuquerque, NM	(505) 842-4949