

District I  
1625 N. French Dr., Hobbs, NM 88240  
Phone: (575) 393-6161 Fax: (575) 393-0720  
District II  
811 S. First St., Artesia, NM 88210  
Phone: (575) 748-1283 Fax: (575) 748-9720  
District III  
1000 Rio Brazos Road, Aztec, NM 87410  
Phone: (505) 334-6178 Fax: (505) 334-6170  
District IV  
1220 S. St. Francis Dr., Santa Fe, NM 87505  
Phone: (505) 476-3460 Fax: (505) 476-3462

State of New Mexico

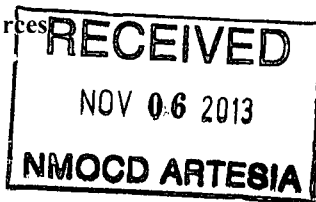
Form C-101  
Revised December 16, 2011

Energy Minerals and Natural Resources

Oil Conservation Division

1220 South St. Francis Dr.

Santa Fe, NM 87505



Permit

APPLICATION FOR PERMIT TO DRILL, RE-ENTER, DEEPEN, PLUGBACK, OR ADD A ZONE

Operator Name and Address DEVON ENERGY PRODUCTION CO., L.P. 333 W. SHERIDAN OKLAHOMA CITY, OK 73102		OGRID Number 6137
Property Code 40216	Property Name HACKBERRY 16 SWD	API Number 30-015-41783
		Well No. 1

Surface Location

UL - Lot	Section	Township	Range	Lot Idn	Feet from	N/S Line	Feet From	E/W Line	County
M	16	19 S	R 31E		330	SOUTH	280	WEST	EDDY

Pool Information

SWD; DEV- FUS- MON- SIMP- ELL DEVONIAN-SILURIAN/ORDOVICIAN	97775
---	-------

Additional Well Information

Work Type NW	Well Type SWD	Cable/Rotary	Lease Type STATE	Ground Level Elevation 3466.2
Multiple	Proposed Depth 15,000'	Formation Devonian	Contractor	Spud Date 2/15/14
Depth to Ground water		Distance from nearest fresh water well		Distance to nearest surface water

Proposed Casing and Cement Program

Type	Hole Size	Casing Size	Casing Weigh/ft	Setting Depth	Sacks of Cement	Estimated TOC
Surf	26"	20"	94#	450'	1090 sx	0
Int 1	17 1/2"	13 3/8"	61#	2535'	1850 sx	0
Int 2	12 1/4"	9 5/8"	40#	4900'	1300 sx	0
8 3/4"	13395'	7"	26#	13395'	1110 sx	3000'
6 1/8"	15000'	N/A	N/A	Open Hole	N/A	N/A

Casing/Cement Program: Additional Comments

26: HOLE; 20", 94# J-55 BTC @ 450' CEMENT w/ 1090 sx CI C to surf; 17 1/2" HOLE 13 3/8", 61# J-55 BTC @ 2535'; CEMENT w/ 1850 sx CI C to surf. 12 1/4" hole 9 5/8" 40#, HCK-55 LTC @ 4900', CEMENT w/ 1300 sx CI C to surf. 8 3/4" HOLE, 7" 26#, HCP-110, LTC @ 13,395'. CEMENT w/ 1110 sx H.. 6 1/8" OPEN HOLE 13395-15000'

Proposed Blowout Prevention Program

Type	Working Pressure	Test Pressure	Manufacturer
Annular	5000	5000	
Double Ram	5000	5000	

I hereby certify that the information given above is true and complete to the best of my knowledge and belief.

I further certify that the drilling pit will be constructed according to NMOC D guidelines ☐, a general permit ☐, or an (attached) alternative OGD-approved plan ☐.

Signature:

Printed name: Judy A. Barnett

Title: Sr. Regulatory Specialist

11/5/13

E-mail Address: [Judith.Barnett@dmv.com](mailto:Judith.Barnett@dmv.com)

OIL CONSERVATION DIVISION

Approved By:

Title:

Approved Date:

Expiration Date:

"Geologist"

Date: 11/5/13	Phone: 405-228-8699	Conditions of Approval Attached

District I  
1625 N. French Dr., Hobbs, NM 88240  
Phone: (575) 393-6161 Fax: (575) 393-0720  
District II  
811 S. First St., Artesia, NM 88210  
Phone: (575) 748-1283 Fax: (575) 748-0720  
District III  
1000 Rio Brazos Road, Aztec, NM 87410  
Phone: (505) 334-6178 Fax: (505) 334-6170  
District IV  
1220 S. St. Francis Dr., Santa Fe, NM 87505  
Phone: (505) 476-3460 Fax: (505) 476-3462

State of New Mexico  
Energy, Minerals & Natural Resources Department  
OIL CONSERVATION DIVISION  
1220 South St. Francis Dr.  
Santa Fe, NM 87505

Form C-102  
Revised August 1, 2011  
Submit one copy to appropriate  
District Office  
☐ AMENDED REPORT

WELL LOCATION AND ACREAGE DEDICATION PLAT

API Number <b>30-015-41783</b>		Pool Code <b>97775</b>	Pool Name <b>DEVONIAN, SILURIAN, ORDOVICIAN</b>
Property Code <b>40216</b>	Property Name <b>HACKBERRY 16 SWD</b>		Well Number <b>1</b>
OGRID No. <b>6137</b>	Operator Name <b>DEVON ENERGY PRODUCTION COMPANY, L.P.</b>		Elevation <b>3466.2</b>

Surface Location

UL or lot no.	Section	Township	Range	Lot Idn	Feet from the	North/South line	Feet from the	East/West line	County
M	16	19 S	31 E		330	SOUTH	280	WEST	EDDY

Bottom Hole Location If Different From Surface

UL or lot no.	Section	Township	Range	Lot Idn	Feet from the	North/South line	Feet from the	East/West line	County

Dedicated Acres	Joint or Infill	Consolidation Code	Order No.
40			

No allowable will be assigned to this completion until all interests have been consolidated or a non-standard unit has been approved by the division.

<p>N89°38'15"E 2642.96 FT</p> <p>NW CORNER SEC. 16 LAT. = 32.6676346"N LONG. = 103.8829157"W NMSP EAST (FT) N = 606928.78 E = 679940.92</p> <p>W/4 CORNER SEC. 16 LAT. = 32.6604256"N LONG. = 103.8828967"W NMSP EAST (FT) N = 604287.91 E = 679957.97</p>			<p>N89°41'15"E 2638.14 FT</p> <p>N/4 CORNER SEC. 16 LAT. = 32.6678994"N LONG. = 103.8743291"W NMSP EAST (FT) N = 606945.50 E = 682583.21</p> <p>HACKBERRY "16" SWD #1 ELEV. = 3466.2' LAT. = 32.6540778"N (NAD83) LONG. = 103.8819641"W NMSP EAST (FT) N = 601979.72 E = 680254.81</p> <p>S/4 CORNER SEC. 16 LAT. = 32.6531811"N LONG. = 103.8742936"W NMSP EAST (FT) N = 601663.50 E = 682618.97</p>			<p>S00°21'23"E 2645.13 FT</p> <p>NE CORNER SEC. 16 LAT. = 32.6677073"N LONG. = 103.8657581"W NMSP EAST (FT) N = 606959.88 E = 685220.69</p> <p>E/4 CORNER SEC. 16 LAT. = 32.6604385"N LONG. = 103.8657424"W NMSP EAST (FT) N = 604315.42 E = 685237.17</p>		
<p>NOTE: LATITUDE AND LONGITUDE COORDINATES ARE SHOWN USING THE NORTH AMERICAN DATUM OF 1983 (NAD83), LISTED NEW MEXICO STATE PLANE EAST COORDINATES ARE GRID (NAD83), BASIS OF BEARING AND DISTANCES USED ARE NEW MEXICO STATE PLANE EAST COORDINATES MODIFIED TO THE SURFACE.</p>			<p>SE CORNER SEC. 16 LAT. = 32.6531946"N LONG. = 103.8657144"W NMSP EAST (FT) N = 601680.04 E = 685257.40</p>					
<p>SW CORNER SEC. 16 LAT. = 32.6531696"N LONG. = 103.8828705"W NMSP EAST (FT) N = 601648.13 E = 679977.22</p>			<p>SE CORNER SEC. 16 LAT. = 32.6531946"N LONG. = 103.8657144"W NMSP EAST (FT) N = 601680.04 E = 685257.40</p>					
<p>280' SURFACE LOCATION</p>			<p>280'</p>					
<p>S89°29'52"W 2640.42 FT</p>			<p>S89°38'36"W 2641.09 FT</p>					

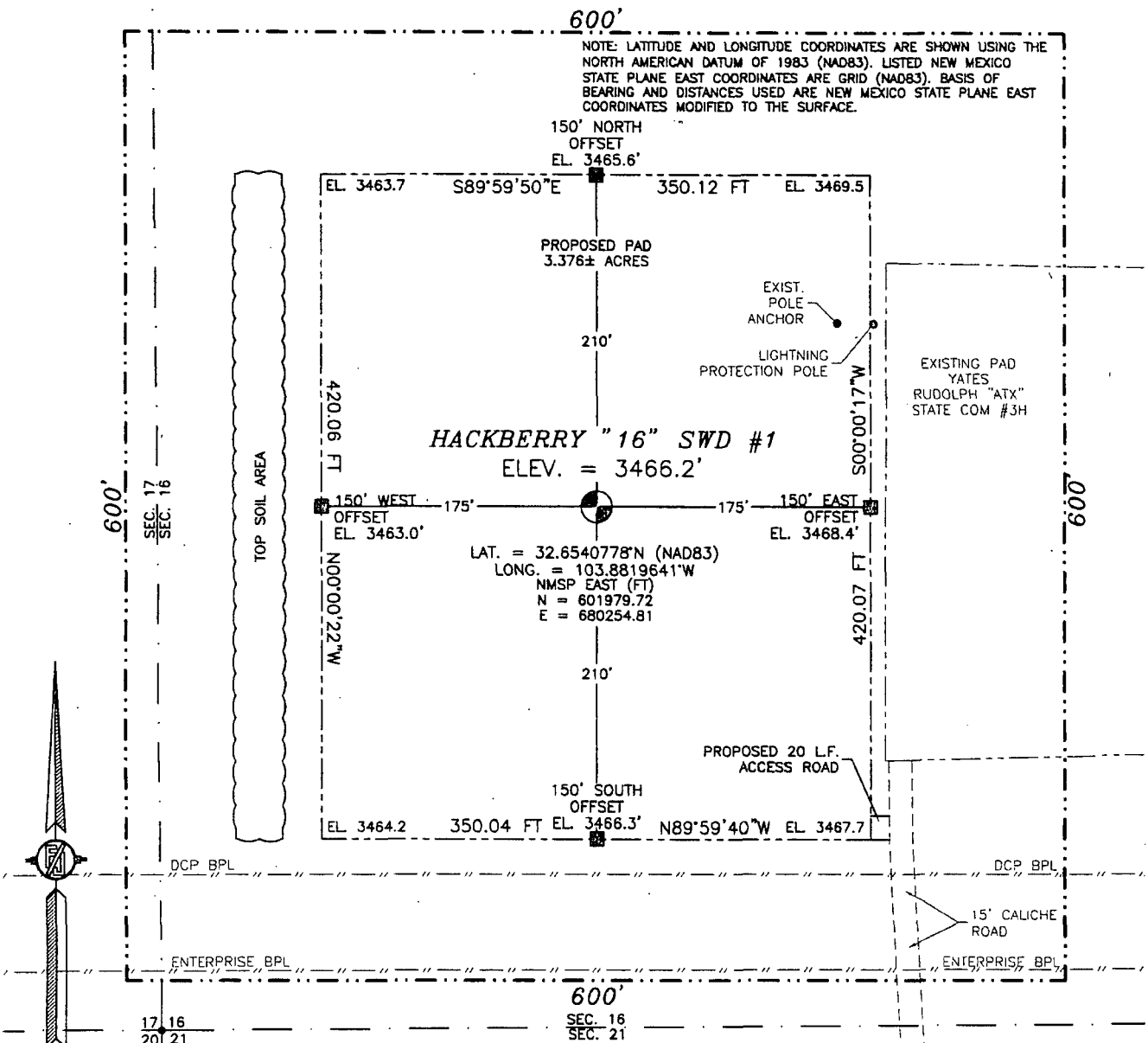
**" OPERATOR CERTIFICATION**  
I hereby certify that the information contained herein is true and complete to the best of my knowledge and belief, and that this organization either owns a working interest or unleased mineral interest in the land including the proposed bottom hole location or has a right to drill this well at this location pursuant to a contract with an owner of such a mineral or working interest, or to a voluntary pooling agreement or a compulsory pooling order heretofore entered by the division.

Signature: *Judy A. Barnett* Date: 11/5/13  
Printed Name: Judy A. Barnett Sr. Regulatory Specialist  
E-mail Address:

**"SURVEYOR CERTIFICATION**  
I hereby certify that the well location shown on this plat was plotted from field notes of actual surveys made by me or under my supervision and that the same is true and correct to the best of my belief.

SEPTEMBER 16, 2013  
Date of Survey: 12797  
Signature and Seal of Professional Surveyor: *[Signature]*  
Certificate Number: 12797  
SURVEY NO. 2261A

SECTION 16, TOWNSHIP 19 SOUTH, RANGE 31 EAST, N.M.P.M.  
EDDY COUNTY, STATE OF NEW MEXICO  
SITE MAP



010 50 100 200

SCALE 1" = 100'

DIRECTIONS TO LOCATION

FROM PAVED CR. #222 (SHUGART) AND PAVED CR. #248 (LUSK PLANT RD.) GO SOUTHWEST ON CR. #222 1.8 MILES, TURN RIGHT ON CALICHE LEASE ROAD AND GO WEST-NORTHWEST 0.83 MILES, TURN RIGHT AND GO NORTH 0.2 MILES, TURN LEFT AND GO WEST 255' TURN RIGHT AND GO NORTH 0.22 MILES AND THE SOUTHEAST CORNER OF PROPOSED PAD IS 20' LEFT FOR THIS LOCATION.

DEVON ENERGY PRODUCTION COMPANY, L.P.

HACKBERRY "16" SWD #1

LOCATED 330 FT. FROM THE SOUTH LINE

AND 280 FT. FROM THE WEST LINE OF

SECTION 16, TOWNSHIP 19 SOUTH,

RANGE 31 EAST, N.M.P.M.

EDDY COUNTY, STATE OF NEW MEXICO

SEPTEMBER 16, 2013

SURVEY NO. 2261A

MADRON SURVEYING, INC.

301 SOUTH CANAL  
(575) 234-3341

CARLSBAD, NEW MEXICO

## LOCATION VERIFICATION MAP



**NOT TO SCALE**

FROM PAVED CR. #222 (SHUGART) AND PAVED CR. #248 (LUSK PLANT RD.) GO SOUTHWEST ON CR. #222 1.6 MILES, TURN RIGHT ON CALICHE LEASE ROAD AND GO WEST--NORTHWEST 0.83 MILES, TURN RIGHT AND GO NORTH 0.2 MILES, TURN LEFT AND GO WEST 255' TURN RIGHT AND GO NORTH 0.22 MILES AND THE SOUTHEAST CORNER OF PROPOSED PAD IS 20' LEFT FOR THIS LOCATION.

HACKBERRY "16" SWD #1

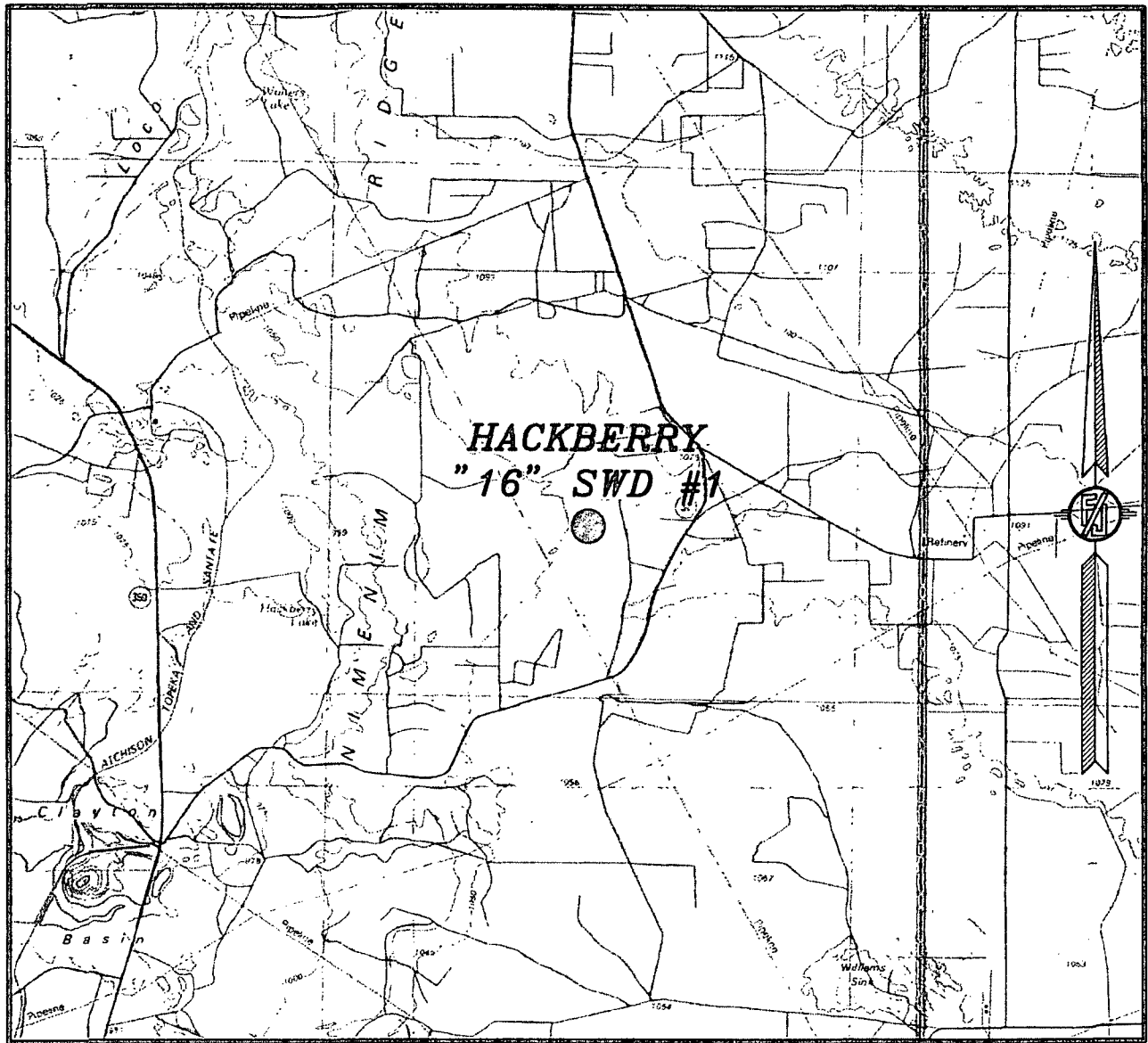
LOCATED 330 FT. FROM THE SOUTH LINE  
AND 280 FT. FROM THE WEST LINE OF  
SECTION 16, TOWNSHIP 19 SOUTH,  
RANGE 31 EAST, N.M.P.M.  
EDDY COUNTY, STATE OF NEW MEXICO

*SURVEY NO. 2261A*

**MADRON SURVEYING, INC.** 301 SOUTH CANAL  
(575) 234-3341

CARLSBAD, NEW MEXICO

SECTION 16, TOWNSHIP 19 SOUTH, RANGE 31 EAST, N.M.P.M.  
EDDY COUNTY, STATE OF NEW MEXICO  
VICINITY MAP



NOT TO SCALE

DEVON ENERGY PRODUCTION COMPANY, L.P.

**HACKBERRY "16" SWD #1**

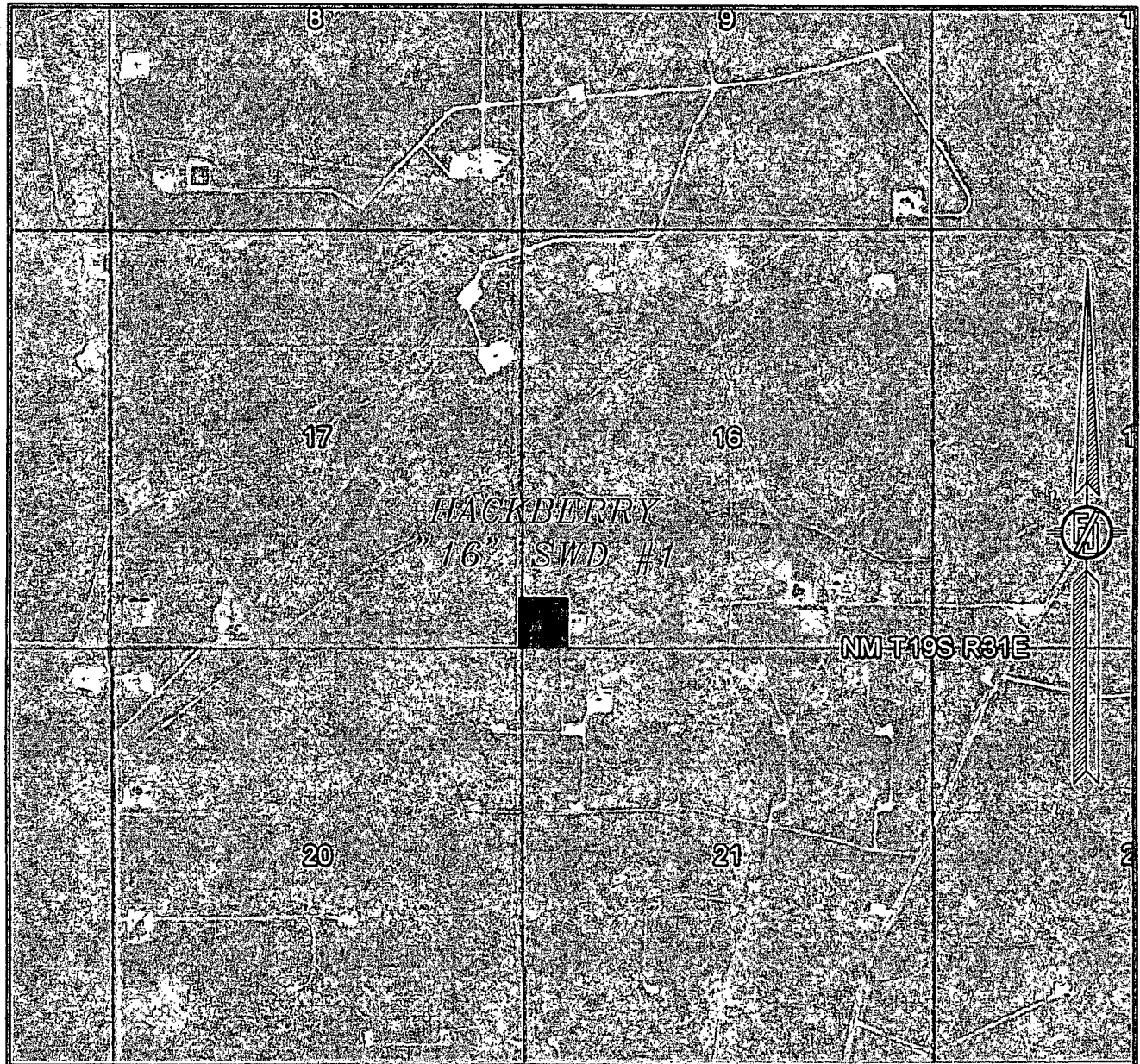
LOCATED 330 FT. FROM THE SOUTH LINE  
AND 280 FT. FROM THE WEST LINE OF  
SECTION 16, TOWNSHIP 19 SOUTH,  
RANGE 31 EAST, N.M.P.M.  
EDDY COUNTY, STATE OF NEW MEXICO

SEPTEMBER 16, 2013

SURVEY NO. 2261A

MADRON SURVEYING, INC. 30' SOUTH CANAL (575) 234-3341 CARLSBAD, NEW MEXICO

SECTION 16, TOWNSHIP 19 SOUTH, RANGE 31 EAST, N.M.P.M.  
EDDY COUNTY, STATE OF NEW MEXICO  
AERIAL PHOTO



NOT TO SCALE  
AERIAL PHOTO:  
GOOGLE EARTH  
MARCH 2012

DEVON ENERGY PRODUCTION COMPANY, L.P.

**HACKBERRY "16" SWD #1**

LOCATED 330 FT. FROM THE SOUTH LINE  
AND 280 FT. FROM THE WEST LINE OF  
SECTION 16, TOWNSHIP 19 SOUTH,  
RANGE 31 EAST, N.M.P.M.  
EDDY COUNTY, STATE OF NEW MEXICO

SEPTEMBER 16, 2013

SURVEY NO. 2261A

MADRON SURVEYING, INC. 301 SOUTH CANAL (575) 234-3341 CARLSBAD, NEW MEXICO