

DISTRICT III
1000 Rio Druzoy Rd., Aztec, NM 87410
Phone (505) 534-8179 Fax: (505) 534-1325

DISTRICT IV
1220 S. St. Francis Dr., Santa Fe, NM 87505
Phone (505) 476-3450 Fax: (505) 476-3450

1220 South St. Francis Dr.
Santa Fe, New Mexico 87505

RECEIVED

30 2013

WELL LOCATION AND ACREAGE DEDICATION PLAT

☐ AMENDED REPORT

API Number 30-015-41408	Pool Code 97197	Pool Name County Line Tank; Abo
Property Code 28584	Property Name GRANDE MIKE AZK STATE	Well Number 2H
OGRID No. 025575	Operator Name YATES PETROLEUM CORP.	Elevation 3747'

Surface Location

UL or lot No.	Section	Township	Range	Lot Idn	Feet from the	North/South line	Feet from the	East/West line	County
LOT 13	2	16 S	29 E		3860	SOUTH	200	WEST	EDDY

Bottom Hole Location If Different From Surface

UL or lot No.	Section	Township	Range	Lot Idn	Feet from the	North/South line	Feet from the	East/West line	County
LOT 16	2	16 S	29 E		3389	SOUTH	331	EAST	EDDY

Dedicated Acres 160	Joint or Infill	Consolidation Code	Order No.
------------------------	-----------------	--------------------	-----------

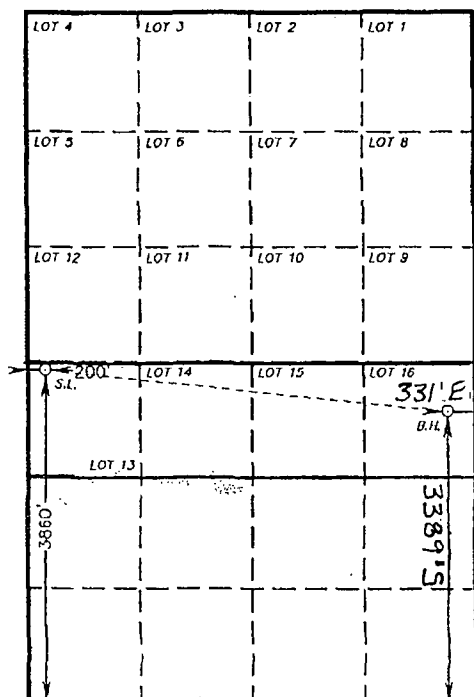
NO ALLOWABLE WILL BE ASSIGNED TO THIS COMPLETION UNTIL ALL INTERESTS HAVE BEEN CONSOLIDATED
OR A NON-STANDARD UNIT HAS BEEN APPROVED BY THE DIVISION

SURFACE LOCATION

Lat - N 32°57'14.66"
Long - W 104°03'12.38"
NNSPCE - N 710941.197
E 627191.166
(NAD-83)

PROPOSED BOTTOM

HOLE LOCATION
Lat - N 32°57'09.98"
Long - W 104°02'16.43"
NNSPCE - N 710480.894
E 631959.500
(NAD-83)



OPERATOR CERTIFICATION

I hereby certify that the information contained herein is true and complete to the best of my knowledge and belief, and that this organization either owns a working interest or unleased mineral interest in the land including the proposed bottom hole location or has a right to drill this well at this location pursuant to a contract with an owner of such a mineral or working interest, or to a voluntary pooling agreement or a compulsory pooling order heretofore entered by the division.

Laura Watts 10/29/13
Signature Date
Laura Watts
Printed Name
laura@yatespetroleum.com
Email Address

SURVEYOR CERTIFICATION

I hereby certify that the well location shown on this plat was plotted from field notes of actual surveys made by me or under my supervision, and that the same is true and correct to the best of my belief.

Gary L. Jones
Date Surveyed
Signature & Seal of Professional Surveyor
Professional Surveyor
No. 26575

Certificate No. Gary L. Jones 7977

BASIN SURVEYS 26575