

NEW MEXICO OIL CONSERVATION DIVISION  
SOUTHEAST NEW MEXICO PACKER LEAKAGE TEST

Revised 11/23/11

Operator ARMSTRONG ENERGY Well API # 30-005-60925  
Location Of Well: Unit M Section 134 Township 8 S Range 27 E County CHAVES  
Well Name & No. CAMPBELL ST. Unit 1

	Name of Reservoir or Pool	Type of Prod. (Oil or Gas)	Method of Prod. (Flow Art. Lift)	Prod. Medium (Tbg. Or Cag.)	Choke Size
Upper Completion	<u>ABO</u>	<u>GAS</u>	<u>Flow</u>	<u>CSG</u>	<u>open</u>
Lower Completion	<u>PENN.</u>	<u>GAS</u>	<u>Flow</u>	<u>TBG.</u>	<u>open</u>

RECEIVED

OCT 21 2013

HOBBS OGD

FLOW TEST NO. 1

Both zones shut-in at (hour, date): 8:45 AM 10-7-13

Well opened at (hour, date): 11:45 AM 10-7-13

Indicate by (X) the zone producing..... X

Pressure at beginning of test..... 120 200

Stabilized? (Yes or No)..... YES YES

Maximum pressure during test..... 120 245

Minimum pressure during test..... 100 200

Pressure at conclusion of test..... 100 245

Pressure change during test (Maximum minus Minimum)..... 20 45

Was pressure change an increase or a decrease?..... DECREASE INCREASE

Well closed at (hour, date): 10:00 AM 10-8-13 Total Time On Production 21.75 HRS

Oil Production 0 Gas Production 14  
During Test: 0 bbls; Grav. 0; During Test 14 MCF; GOR 0

Remarks: \_\_\_\_\_

RECEIVED

OCT 21 2013

HOBBS OGD

FLOW TEST NO. 2

Both zones shut-in at (hour, date): 10:00 AM 10-8-13

Well opened at (hour, date): 10:15 AM 10-8-13

Indicate by (X) the zone producing..... X

Pressure at beginning of test..... 115 250

Stabilized? (Yes or No)..... YES YES

Maximum pressure during test..... 145 250

Minimum pressure during test..... 115 130

Pressure at conclusion of test..... 145 130

Pressure change during test (Maximum minus Minimum)..... 30 120

Was pressure change an increase or a decrease?..... INCREASE DECREASE

Well closed at (hour, date): 5:15 pm 10-8-13 Total Time On Production 7 Hours

Oil Production 0 Gas Production 5  
During Test: 0 bbls; Grav. 0; During Test 5 MCF; GOR 0

Remarks: \_\_\_\_\_

I hereby certify that the information herein contained is true and complete to the best of my knowledge.

Approved \_\_\_\_\_ 20 \_\_\_\_\_

New Mexico Oil Conservation Division

Accepted for record

By \_\_\_\_\_ NMOC

Title \_\_\_\_\_

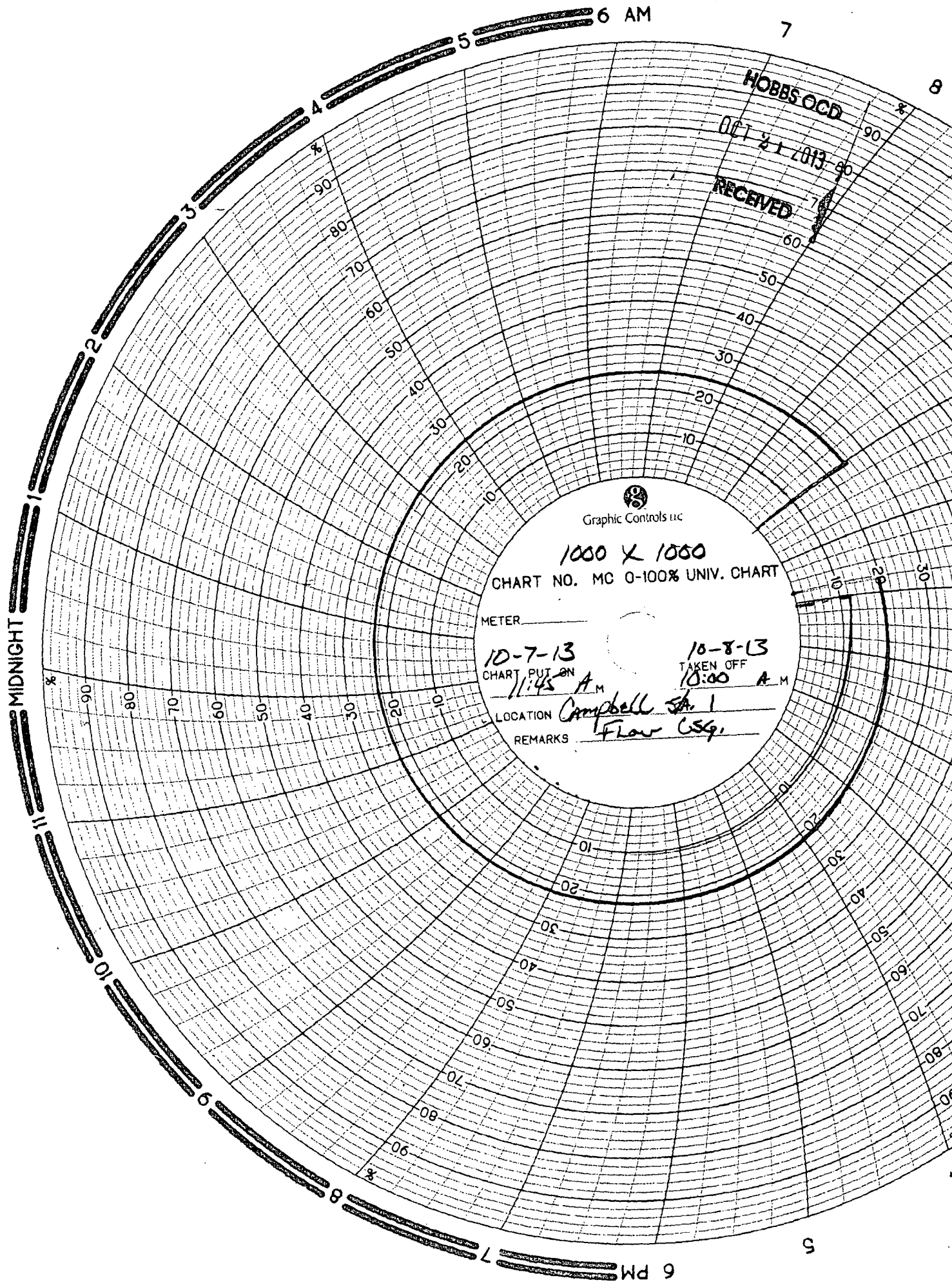
Operator ARMSTRONG ENERGY

By Jeff Deck

Title MEASUREMENT TECH II

E-mail Address jdeck@guestoffice.net

Date 10-8-2013



Graphic Controls Inc

1000 X 1000

CHART NO. MC 0-100% UNIV. CHART

METER

10-7-13

CHART PUT ON 11:45 A.M.

10-8-13

TAKEN OFF 10:00 A.M.

LOCATION Campbell Sta. 1

REMARKS Flow 65g.

1 2 3 4 5 6 AM

MIDNIGHT

11

10

9

8

7

RECEIVED

07-21-2013  
HOBBS OCCB

Graphic Controls Inc

1000 x 1000  
CHART NO. MC 0-100% UNIV. CHART

METER  
10-8-13  
CHART PUT ON  
10:15 AM

10-8-13  
TAKEN OFF  
5:15 PM

LOCATION Campbell Sta #1  
REMARKS Flaw Tbg.