

RECEIVED
DEC 11 2013
MADRID ARTESIA

DISTRICT I
1625 N. French Dr., Hobbs, NM 88240

DISTRICT II
1301 W. Grand Avenue, Artesia, NM 88210

DISTRICT III
1000 Rio Brazos Rd., Aztec, NM 87410

DISTRICT IV
1220 S. St. Francis Dr., Santa Fe, NM 87505

State of New Mexico
Energy, Minerals and Natural Resources Department

Form C-102
Revised October 15, 2009

Submit one copy to appropriate
District Office

OIL CONSERVATION DIVISION
1220 South St. Francis Dr.
Santa Fe, New Mexico 87505

WELL LOCATION AND ACREAGE DEDICATION PLAT

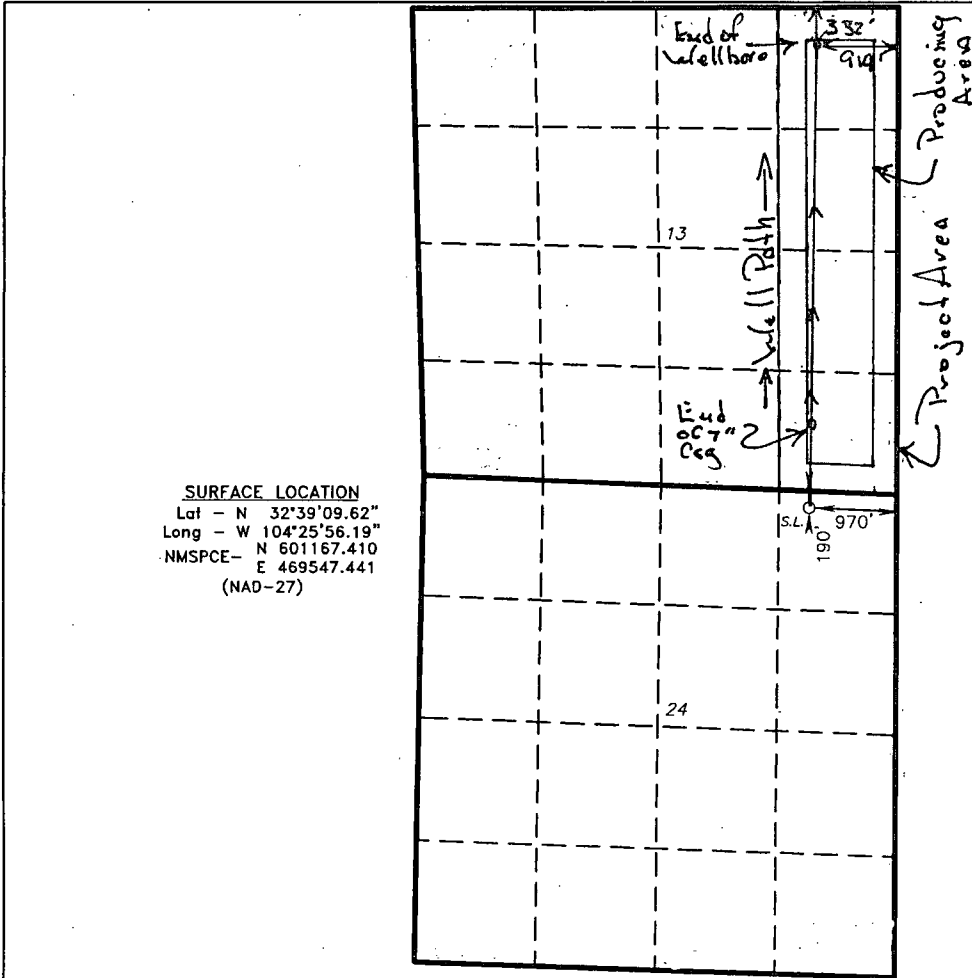
☐ AMENDED REPORT

API Number 30-015-10301	Pool Code 97565	Pool Name North Seven Rivers; Gloria La Vesa
Property Code 39228	Property Name WYATT DRAW 13 PA	Well Number 1H
OGRID No. 14744	Operator Name MEWBOURNE OIL COMPANY	Elevation 3391'

Surface Location									
UL or lot No.	Section	Township	Range	Lot Idn	Feet from the	North/South line	Feet from the	East/West line	County
A	24	19 S	25 E		190	NORTH	970	EAST	EDDY

Bottom Hole Location If Different From Surface									
UL or lot No.	Section	Township	Range	Lot Idn	Feet from the	North/South line	Feet from the	East/West line	County
A	13	19 S	25 E		332	North	919	East	Eddy
Dedicated Acres 160	Joint or Infill	Consolidation Code	Order No.						

NO ALLOWABLE WILL BE ASSIGNED TO THIS COMPLETION UNTIL ALL INTERESTS HAVE BEEN CONSOLIDATED
OR A NON-STANDARD UNIT HAS BEEN APPROVED BY THE DIVISION



SURFACE LOCATION
Lat - N 32°39'09.62"
Long - W 104°25'56.19"
NMSPCE - N 601167.410
E 469547.441
(NAD-27)

OPERATOR CERTIFICATION I hereby certify that the information contained herein is true and complete to the best of my knowledge and belief, and that this organization either owns a working interest or released mineral interest in the land including the proposed bottom hole location or has a right to drill this well at this location pursuant to a contract with an owner of such a mineral or working interest, or to a voluntary pooling agreement or a compulsory pooling order heretofore entered by the division. Signature: <u>G. M. Young</u> Date: <u>12/16/13</u> Printed Name: <u>N. M. Young</u>	
SURVEYOR CERTIFICATION I hereby certify that the well location shown on this plat was plotted from field notes of actual surveys made by me or under my supervision, and that the same is true and correct to the best of my belief. Date Surveyed: <u>APR 5, 2014</u> Signature of Professional Surveyor: <u>[Signature]</u> Professional Surveyor: <u>7977</u> Certificate No.: <u>201403</u> Certificate No.: <u>Cary L. Jones</u> 7977	
BASIN SURVEYS	