

DISTRICT I
1625 N. French Dr., Hobbs, NM 88240
DISTRICT II
1301 W. Grand Avenue, Artesia, NM 88210
DISTRICT III
1000 Rio Brazos Rd., Aztec, NM 87410
DISTRICT IV
1220 S. St. Francis Dr., Santa Fe, NM 87505

State of New Mexico
Energy, Minerals and Natural Resources Department

RECEIVED

JAN 09 2014

Form C-102
Revised July 16, 2010
Submit one copy to appropriate
District Office

OIL CONSERVATION DIVISION

1220 South St. Francis
Santa Fe, New Mexico 87505

AMOC D ARTESIA

WELL LOCATION AND ACREAGE DEDICATION PLAT

X AMENDED REPORT
"As Drilled"

API Number 30-015-41185	Pool Code 50386	Pool Name POKER LAKE; DELAWARE
Property Code 306402	Property Name POKER LAKE UNIT	Well Number 387H
OGRID No. 260737	Operator Name BOPCO, L.P.	Elevation 3353'

Surface Location

UL or lot No.	Section	Township	Range	Lot Idn	Feet from the	North/South line	Feet from the	East/West line	County
LOT 1	18	25 S	31 E		660	NORTH	200	WEST	EDDY

Bottom Hole Location If Different From Surface

UL or lot No.	Section	Township	Range	Lot Idn	Feet from the	North/South line	Feet from the	East/West line	County
B	14	25 S	30 E		658	NORTH	2513	EAST	EDDY

Dedicated Acres 240	Joint or Infill	Consolidation Code	Order No.
------------------------	-----------------	--------------------	-----------

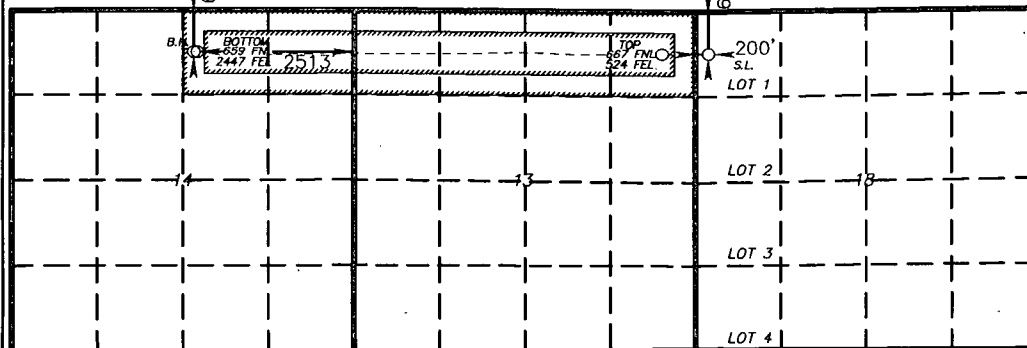
NO ALLOWABLE WILL BE ASSIGNED TO THIS COMPLETION UNTIL ALL INTERESTS HAVE BEEN CONSOLIDATED
OR A NON-STANDARD UNIT HAS BEEN APPROVED BY THE DIVISION

BOTTOM HOLE LOCATION

Lat - N 32°08'09.17"
Long - W 103°51'02.62"
NMSPCE- N 413489.7
E 649384.7
(NAD-27)

SURFACE LOCATION/PP

Lat - N 32°08'08.40"
Long - W 103°48'29.15"
NMSPCE- N 413449.548
E 657421.768
(NAD-27)



OPERATOR CERTIFICATION

I hereby certify that the information contained herein is true and complete to the best of my knowledge and belief, and that this organization either owns a working interest or unleased mineral interest in the land including the proposed bottom hole location or has a right to drill this well at this location pursuant to a contract with an owner of such a mineral or working interest, or to a voluntary pooling agreement or a compulsory pooling order heretofore entered by the division.

Signature: *Tracie J Cherry* Date: 01-08-14

Tracie J Cherry

Printed Name
tjcherry@basspet.com

Email Address

SURVEYOR CERTIFICATION

I hereby certify that the well location shown on this plat was plotted from field notes of actual surveys made by me or under my supervision, and that the same is true and correct to the best of my belief.

Date Surveyed: *01-08-14*
Signature & Seal of Professional Surveyor: *Gary L. Jones*
Professional Surveyor: *GARY L. JONES*
W.C. No. 26958

Certificate No. Gary L. Jones 7977

BASIN SURVEYS 26958