

DISTRICT I  
1625 N. French Dr., Hobbs, NM 88240  
Phone: (575) 393-6161 Fax: (575) 393-0720

DISTRICT II  
811 S. First St., Artesia, NM 88210  
Phone: (575) 748-1283 Fax: (575) 748-9720

DISTRICT III  
1000 Rio Brazos Road, Aztec, NM 87410  
Phone: (505) 334-6178 Fax: (505) 334-6170

DISTRICT IV  
1220 S. St. Francis Dr., Santa Fe, NM 87505  
Phone: (505) 476-3460 Fax: (505) 476-3462

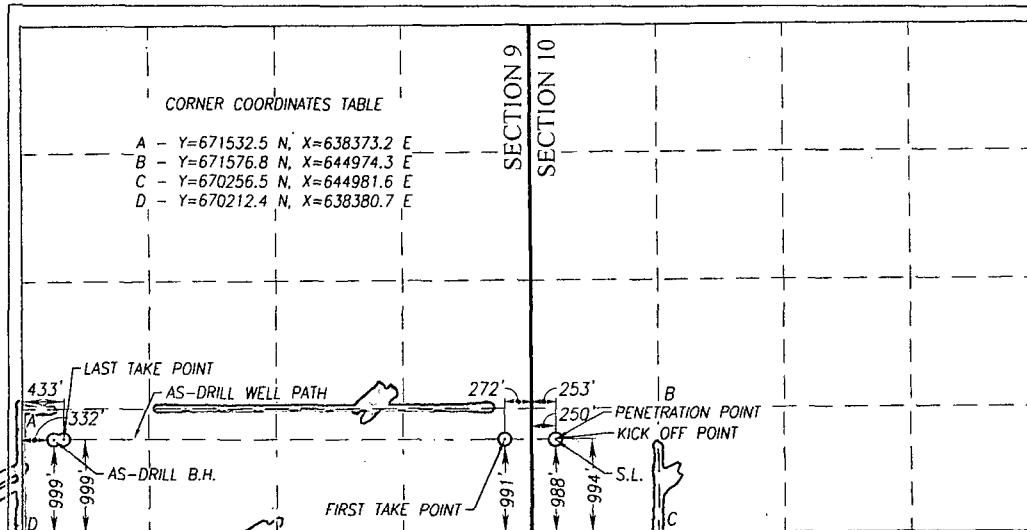
State of New Mexico  
Energy, Minerals & Natural Resources Department  
OIL CONSERVATION DIVISION  
1220 South St. Francis Dr.  
Santa Fe, New Mexico 87505

Form C-102  
Revised August 1, 2011  
Submit one copy to appropriate  
District Office

AMENDED REPORT

WELL LOCATION AND ACREAGE DEDICATION PLAT

API Number 30-15-40579		Pool Code 26770		Pool Name FREN; GLORIETA-YESO					
Property Code 308711		Property Name CROW FEDERAL						Well Number 15H	
OGRID No. 873		Operator Name APACHE CORPORATION						Elevation 3885'	
Surface Location									
UL or lot No. M	Section 10	Township 17-S	Range 31-E	Lot Idn	Feet from the 988	North/South line SOUTH	Feet from the 250	East/West line WEST	County EDDY
As-Drill Bottom Hole Location If Different From Surface									
UL or lot No. M	Section 9	Township 17-S	Range 31-E	Lot Idn	Feet from the 999	North/South line SOUTH	Feet from the 332	East/West line WEST	County EDDY
Penetration Point Location									
UL or lot No. M	Section 10	Township 17-S	Range 31-E	Lot Idn	Feet from the 994	North/South line SOUTH	Feet from the 253	East/West line WEST	County EDDY
Dedicated Acres 200		Joint or Infill		Consolidation Code		Order No.			



CORNER COORDINATES TABLE

A - Y=671532.5 N, X=638373.2 E  
B - Y=671576.8 N, X=644974.3 E  
C - Y=670256.5 N, X=644981.6 E  
D - Y=670212.4 N, X=638380.7 E

**OPERATOR CERTIFICATION**

I hereby certify that the information herein is true and complete to the best of my knowledge and belief, and that this organization either owns a working interest or unleased mineral interest in the land including the proposed bottom hole location or has a right to drill this well at this location pursuant to a contract with an owner of such mineral or working interest, or to a voluntary pooling agreement or a compulsory pooling order heretofore entered by the division.

*[Signature]* 01/14/2014  
Signature Date  
Fatima Vasquez  
Printed Name  
Fatima.Vasquez@apachecorp.com  
E-mail Address

**SURVEYOR CERTIFICATION**

I hereby certify that the well location shown on this plat was plotted from field notes of actual surveys made by me or under my supervision, and that the same is true and correct to the best of my belief.

MARCH 27, 2012  
Date of Survey  
Signature & Seal of Professional Surveyor:  
*[Signature]*  
RONALD J. EIDSON  
NEW MEXICO  
3239  
Certificate Number Gary G. Eidson 12641  
Ronald J. Eidson 3239  
BKL WSC W.O.: 13.13.1410

NOTE:  
AS-DRILLED BOTTOM HOLE AND PENETRATION POINT PLOTTED FROM DATA FURNISHED BY  
(APACHE CORPORATION; PHOENIX FINAL SURVEY REPORT, JULY 16, 2013)

GEODETIC COORDINATES  
NAD 27 NME  
KICK OFF POINT  
Y=371230.8 N  
X=643906.7 E  
LAT.=32.844421° N  
LONG.=103.864767° W  
LAT.=32° 50' 40" N  
LONG.=103° 51' 53" W