

District I
1625 N. French Dr. Hobbs NM 88240
Phone: (575) 393-6161 Fax: (575) 393-0720
District II
811 S. First St., Artesia, NM 88210
Phone: (575) 748-1283 Fax: (575) 748-9720
District III
1000 Rio Brazos Road, Aztec, NM 87410
Phone: (505) 334-6174 Fax: (505) 334-6170
District IV
1220 S. St. Francis Dr., Santa Fe, NM 87505
Phone: (505) 476-3460 Fax: (505) 476-3462

State of New Mexico

Form C-101
Revised July 18, 2013

Energy Minerals and Natural Resources

Oil Conservation Division

1220 South St. Francis Dr.

Santa Fe, NM 87505

RECEIVED	AMENDED REPORT
JAN 24 2014	
NMOCD ARTESIA	

APPLICATION FOR PERMIT TO DRILL, RE-ENTER, DEEPEN, PLUGBACK, OR ADD A ZONE

Operator Name and Address Mack Energy Corporation P.O. Box 960, Artesia, NM 88210		OGRID Number 013837	
		API Number 30-015-24961	
Property Code 08977	Sonora Fee	Property Name	Well No. 1

Surface Location

UL - Lot N	Section 19	Township 23S	Range 27E	Lot Idn	Feet from 658	N/S Line South	Feet From 1968	E/W Line West	County Eddy
---------------	---------------	-----------------	--------------	---------	------------------	-------------------	-------------------	------------------	----------------

Proposed Bottom Hole Location

UL - Lot	Section	Township	Range	Lot Idn	Feet from	N/S Line	Feet From	E/W Line	County
----------	---------	----------	-------	---------	-----------	----------	-----------	----------	--------

Pool Information

Dark Canyon Delaware, East	Pool Name	Pool Code 96143
----------------------------	-----------	--------------------

Additional Well Information

Work Type Re-Entry	Well Type Oil Well	Cable/Rotary	Lease Type Fee	Ground Level Elevation 3204'
Multiple	Proposed Depth 5600'	Formation Dark Canyon Delaware, East	Contractor	Spud Date 2/1/2014
Depth to Ground water		Distance from nearest fresh water well		Distance to nearest surface water

☒ We will be using a closed-loop system in lieu of lined pits

Proposed Casing and Cement Program

Type	Hole Size	Casing Size	Casing Weight/ft	Setting Depth	Sacks of Cement	Estimated TOC
K-55	12 1/4"	8 5/8"	24	507'	400sx (existing)	0
K-55	7 7/8"	5 1/2"	17	5598'	1400sx (existing)	0

Casing/Cement Program: Additional Comments

--

Proposed Blowout Prevention Program

Type	Working Pressure	Test Pressure	Manufacturer
Double Ram	3000	3000	

I hereby certify that the information given above is true and complete to the best of my knowledge and belief. I further certify that I have complied with 19.15.14.9 (A) NMAC <input checked="" type="checkbox"/> and/or 19.15.14.9 (B) NMAC <input type="checkbox"/> , if applicable. Signature: <i>Deana Weaver</i>		OIL CONSERVATION DIVISION.	
Printed name Deana Weaver		Approved By: <i>T.C. Shepard</i>	
Title Production Clerk		Title "Geologist"	
E-mail Address dweaver@mec.com		Approved Date: 1-24-2014 Expiration Date: 7-24-2016	
Date: 1.23.14	Phone 575-748-1288	Conditions of Approval Attached	

Mack Energy Corporation

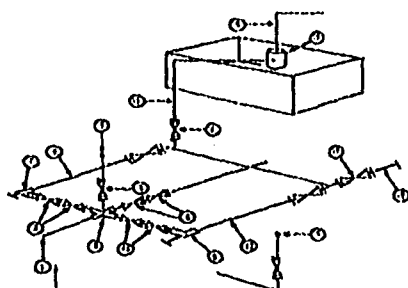
Exhibit #2

MINIMUM CHOKER MANIFOLD

3,000, 5,000, and 10,000 PSI Working Pressure

3M will be used

3 MWP - 5 MWP - 10 MWP



Mud Pit

Reserve Pit

* Location of separator optional

Below Substructure

Minimum requirements

No.		3,000 MWP			5,000 MWP			10,000 MWP		
		I.D.	Nominal	Rating	I.D.	Nominal	Rating	I.D.	Nominal	Rating
1	Line from drilling Spool		3"	3,000		3"	5,000		3"	10,000
2	Cross 3" x 3" x 3" x 2"			3,000			5,000			10,000
2	Cross 3" x 3" x 3" x 2"									10,000
3	Valve Gate Plug	3 1/8		3,000	3 1/8		5,000	3 1/8		10,000
4	Valve Gate Plug	1 13/16		3,000	1 13/16		5,000	1 13/16		10,000
4a	Valves (1)	2 1/16		3,000	2 1/16		5,000	2 1/16		10,000
5	Pressure Gauge			3,000			5,000			10,000
6	Valve Gate Plug	3 1/8		3,000	3 1/8		5,000	3 1/8		10,000
7	Adjustable Choke (3)	2"		3,000	2"		5,000	2"		10,000
8	Adjustable Choke	1"		3,000	1"		5,000	2"		10,000
9	Line		3"	3,000		3"	5,000		3"	10,000
10	Line		2"	3,000		2"	5,000		2"	10,000
11	Valve Gate Plug	3 1/8		3,000	3 1/8		5,000	3 1/8		10,000
12	Line		3"	1,000		3"	1,000		3"	2,000
13	Line		3"	1,000		3"	1,000		3"	2,000
14	Remote reading compound Standpipe pressure gauge			3,000			5,000			10,000
15	Gas Separator		2' x 5'			2' x 5'			2' x 5'	
16	Line		4"	1,000		4"	1,000		4"	2,000
17	Valve Gate Plug	3 1/8		3,000	3 1/8		5,000	3 1/8		10,000

- (1) Only one required in Class 3M
- (2) Gate valves only shall be used for Class 10 M
- (3) Remote operated hydraulic chokes required on 5,000 psi and 10,000 psi for drilling.

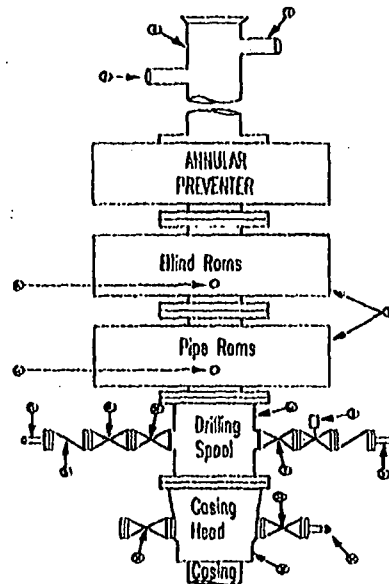
EQUIPMENT SPECIFICATIONS AND INSTALLATION INSTRUCTION

1. All connections in choke manifold shall be welded, studded, flanged or Cameron clamp of comparable rating.
2. All flanges shall be API 6B or 6BX and ring gaskets shall be API RX or BX. Use only BX for 10 MWP.
3. All lines shall be securely anchored.
4. Chokes shall be equipped with tungsten carbide seats and needles, and replacements shall be available.
5. alternate with automatic chokes, a choke manifold pressure gauge shall be located on the rig floor in conjunction with the standpipe pressure gauge.
6. Line from drilling spool to choke manifold should be as straight as possible. Lines downstream from chokes shall make turns by large bends or 90 degree bends using ball plugged tees

Mack Energy Corporation
Minimum Blowout Preventer Requirements
 3000 psi Working Pressure
 13 3/8 Inch - 3 MWP
 11 Inch - 3 MWP
 EXHIBIT #1

Stack Requirements

NO.	Items	Min. I.D.	Min. Nominal
1	Flowline		2"
2	Fill up line		2"
3	Drilling nipple		
4	Annular preventer		
5	Two single or one dual hydraulically operated rams		
6a	Drilling spool with 2" min. kill line and 3" min. choke line outlets		2" Choke
6b	2" min. kill line and 3" min. choke line outlets in ram. (Alternate to 6a above)		
7	Valve Gate Plug	3 1/8	
8	Gate valve-power operated	3 1/8	
9	Line to choke manifold		3"
10	Valve Gate Plug	2 1/16	
11	Check valve	2 1/16	
12	Casing head		
13	Valve Gate Plug	1 13/16	
14	Pressure gauge with needle valve		
15	Kill line to rig mud pump manifold		2"



OPTIONAL

16	Plugged Valve	1 13/16	
----	---------------	---------	--

CONTRACTOR'S OPTION TO FURNISH:

1. All equipment and connections above underhead or casinghead. Working pressure of preventers to be 2000 psi minimum.
2. Automatic accumulator (80 gallons, minimum) capable of closing BOP in 30 seconds or less and, holding them closed against full rated working pressure.
3. BOP controls, to be located near drillers' position.
4. Kelly equipped with Kelly cock.
5. Inside blowout preventer or its equivalent on derrick floor at all times with proper threads to fit pipe being used.
6. Kelly saver-sub equipped with rubber casing protector at all times.
7. Plug type blowout preventer tester.
8. Extra set pipe nuts to fit drill pipe in use on location at all times.
9. Type RX ring gaskets in place of Type R.

MEC TO FURNISH:

1. Underhead or casing head and side valves.
2. Wear bushing, if required.

ME

GENERAL NOTES:

1. Deviations from this drawing may be made only with the express permission of MEC's Drilling Manager.
2. All connections, valves, fittings, piping, etc., subject to well or pump pressure must be flanged (suitable clamp connections acceptable) and have minimum working pressure equal to rated working pressure of preventers up through choke valves must be full opening and suitable for high pressure mud service.
3. Controls to be of standard design and each marked, showing opening and closing position.
4. Chokes will be positioned so as not to hamper or delay changing of choke beans.

Replaceable parts for adjustable choke, or bean sizes, retainers, and choke wrenches to be conveniently located for immediate use.

5. All valves to be equipped with hand-wheels or handles ready for immediate use.
6. Choke lines must be suitably anchored.
7. Handwheels and extensions to be connected and ready for use.
8. Valves adjacent to drilling spool to be kept open. Use outside valves except for emergency.
9. All seamless steel central piping (2000 psi working pressure) to have flexible joints to avoid stress. Hoses will be permitted.
10. Casinghead connections shall not be used except in case of emergency.
11. Does not use kill line for routine fill up operations.