

DISTRICT I
1826 N. French Dr., Hobbs, NM 88240

DISTRICT II
1301 W. Grand Avenue, Artesia, NM 88210

DISTRICT III
1000 Rio Brazos Rd., Aztec, NM 87410

DISTRICT IV
1220 S. St. Francis Dr., Santa Fe, NM 87505

State of New Mexico
Energy, Minerals and Natural Resources Department

OIL CONSERVATION DIVISION
1220 South St. Francis Dr.
Santa Fe, New Mexico 87505

Form C-102
Revised July 16, 2010

Submit one copy to appropriate
District Office

WELL LOCATION AND ACREAGE DEDICATION PLAT

AMENDED REPORT
As Drilled
Pool Transfer

API Number 30-015-41299	Pool Code 96473	Pool Name Pierce Crossing; Bone Spring, East
Property Code 306402	Property Name POKER LAKE UNIT	Well Number 440H
OGRID No. 260737	Operator Name BOPCO, L.P.	Elevation 3157'

Surface Location

UL or lot No. 0	Section 18	Township 24 S	Range 30 E	Lot Idn	Feet from the 1310	North/South line SOUTH	Feet from the 2430	East/West line EAST	County EDDY
--------------------	---------------	------------------	---------------	---------	-----------------------	---------------------------	-----------------------	------------------------	----------------

Bottom Hole Location If Different From Surface

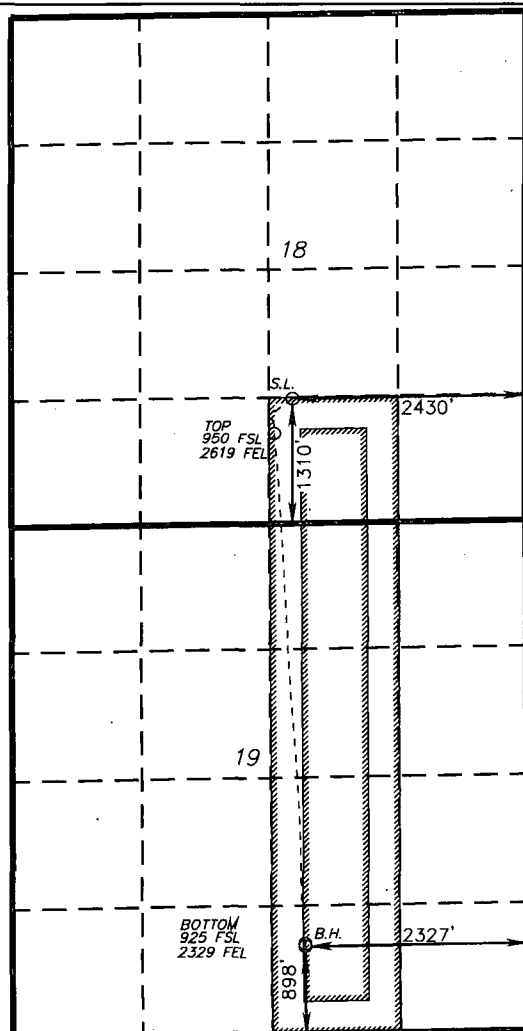
UL or lot No. 0	Section 19	Township 24 S	Range 30 E	Lot Idn	Feet from the 898	North/South line SOUTH	Feet from the 2327	East/West line EAST	County EDDY
--------------------	---------------	------------------	---------------	---------	----------------------	---------------------------	-----------------------	------------------------	----------------

Dedicated Acres 200	Joint or Infill	Consolidation Code	Order No.
------------------------	-----------------	--------------------	-----------

NO ALLOWABLE WILL BE ASSIGNED TO THIS COMPLETION UNTIL ALL INTERESTS HAVE BEEN CONSOLIDATED
OR A NON-STANDARD UNIT HAS BEEN APPROVED BY THE DIVISION

SURFACE LOCATION
Lat - N 32°12'49.51"
Long - W 103°55'10.45"
NMSPC- N 441728.555
E 627966.573
(NAD-27)

BOTTOM
HOLE LOCATION
Lat - N 32°11'53.07"
Long - W 103°55'08.98"
NMSPC- N 436026.6
E 628115.0
(NAD-27)



OPERATOR CERTIFICATION

I hereby certify that the information contained herein is true and complete to the best of my knowledge and belief, and that this organization either owns a working interest or unleased mineral interest in the land including the proposed bottom hole location or has a right to drill this well at this location pursuant to a contract with an owner of such a mineral or working interest, or to a voluntary pooling agreement or a compulsory pooling order heretofore entered by the division.

Signature: *Tracie J Cherry* Date: 030214

Tracie J Cherry

Printed Name
tjcherry@basspet.com

Email Address

SURVEYOR CERTIFICATION

I hereby certify that the well location shown on this plat was plotted from field notes of actual surveys made by me or under my supervision, and that the same is true and correct to the best of my belief.

NOVEMBER - NOV 2012

Date Surveyed
Signature & Seal of
Professional Surveyor
7977

Certificate No. Gary L. Jones 7977

BASIN SURVEYS 27681