

District I
1625 N. French Dr., Hobbs, NM 88240
District II
1301 W. Grand Avenue, Artesia, NM 88210
District III
1000 Rio Brazos Road, Aztec, NM 87410
District IV
1220 S. St. Francis Dr., Santa Fe, NM 87505

State of New Mexico
Energy Minerals and Natural
Resources

Oil Conservation Division
1220 South St. Francis Dr.
Santa Fe, NM 87505

Form C-144
June 1, 2004

For drilling and production facilities, submit
to appropriate NMOCD District Office.
For downstream facilities, submit to Santa Fe
office

Pit or Below-Grade Tank Registration or Closure

Is pit or below-grade tank covered by a "general plan"? Yes ☒ No ☐
Type of action: Registration of a pit or below-grade tank ☐ Closure of a pit or below-grade tank ☒

Operator: Yates Petroleum Corporation Telephone: 505-748-4500 e-mail address: mikes@ypcnm.com

Address: 105 South 4th Street, Artesia, NM 88210

Facility or well name: Brick State Unit 1 API #: 30-005-63737 U/L or Qtr/Qtr D Sec 9 T 8S R 27E

County: Chaves Latitude 33.63927 Longitude 104.20338 NAD: 1927 ☒ 1983 ☐

Surface Owner: Federal ☐ State ☐ Private ☒ Indian ☐

RECEIVED

OCT 13 2005

UUD-ARTESIA

Pit

Type: Drilling ☒ Production ☐ Disposal ☐

Work over ☐ Emergency ☐

Lined ☒ Unlined ☐

Liner type: Synthetic ☒ Thickness 12 mil Clay ☐

Pit Volume 12,000 bbl

Below-grade tank

Volume: bbl Type of fluid:

Construction material:

Double-walled, with leak detection? Yes ☐ If not, explain why not.

Depth to ground water (vertical distance from bottom of pit to seasonal high water elevation of ground water.)

Less than 50 feet

50 feet or more, but less than 100 feet

100 feet or more

(20 points)

(10 points)

(0 points) XXXX

Wellhead protection area: (Less than 200 feet from a private domestic water source, or less than 1000 feet from all other water sources.)

Yes

No

(20 points) XXXX

(0 points)

Distance to surface water: (horizontal distance to all wetlands, playas, irrigation canals, ditches, and perennial and ephemeral watercourses.)

Less than 200 feet

200 feet or more, but less than 1000 feet

1000 feet or more

(20 points)

(10 points)

(0 points) XXXX

Ranking Score (Total Points)

20 Points

If this is a pit closure: (1) Attach a diagram of the facility showing the pit's relationship to other equipment and tanks. (2) Indicate disposal location: (check the onsite box if you are burying in place) onsite ☐ offsite ☒ If offsite, name of facility: N/A (3) Attach a general description of remedial action taken including remediation start date and end date. (4) Groundwater encountered: No ☐ Yes ☐ If yes, show depth below ground surface ft. and attach sample results.

(5) Attach soil sample results and a diagram of sample locations and excavations.

Additional Comments: Closure work plan for drilling pit. The drilling pit contents will be excavated and hauled to an OCD approved soil waste facility.

The excavated area will then be backfilled to grade using a minimum of 3' of clean soil and like material. A one call and a 48 hour notice will be provided to the Oil Conservation Division.

Pit Closure start date: N/A Final closure date: N/A

I hereby certify that the information above is true and complete to the best of my knowledge and belief. I further certify that the above-described pit or below-grade tank has been/will be constructed or closed according to NMOCD guidelines ☐, a general permit ☒, or an (attached) alternative OCD-approved plan ☐.

Date: 10/12/2005

Printed Name/Title Mike Stubblefield / Regulatory Agent

Signature

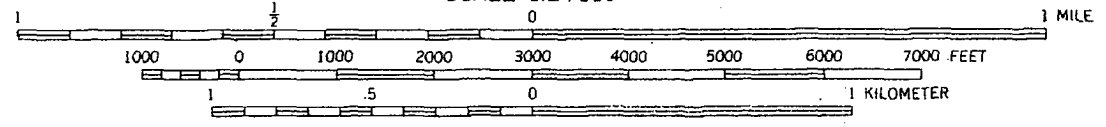
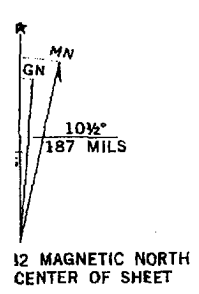
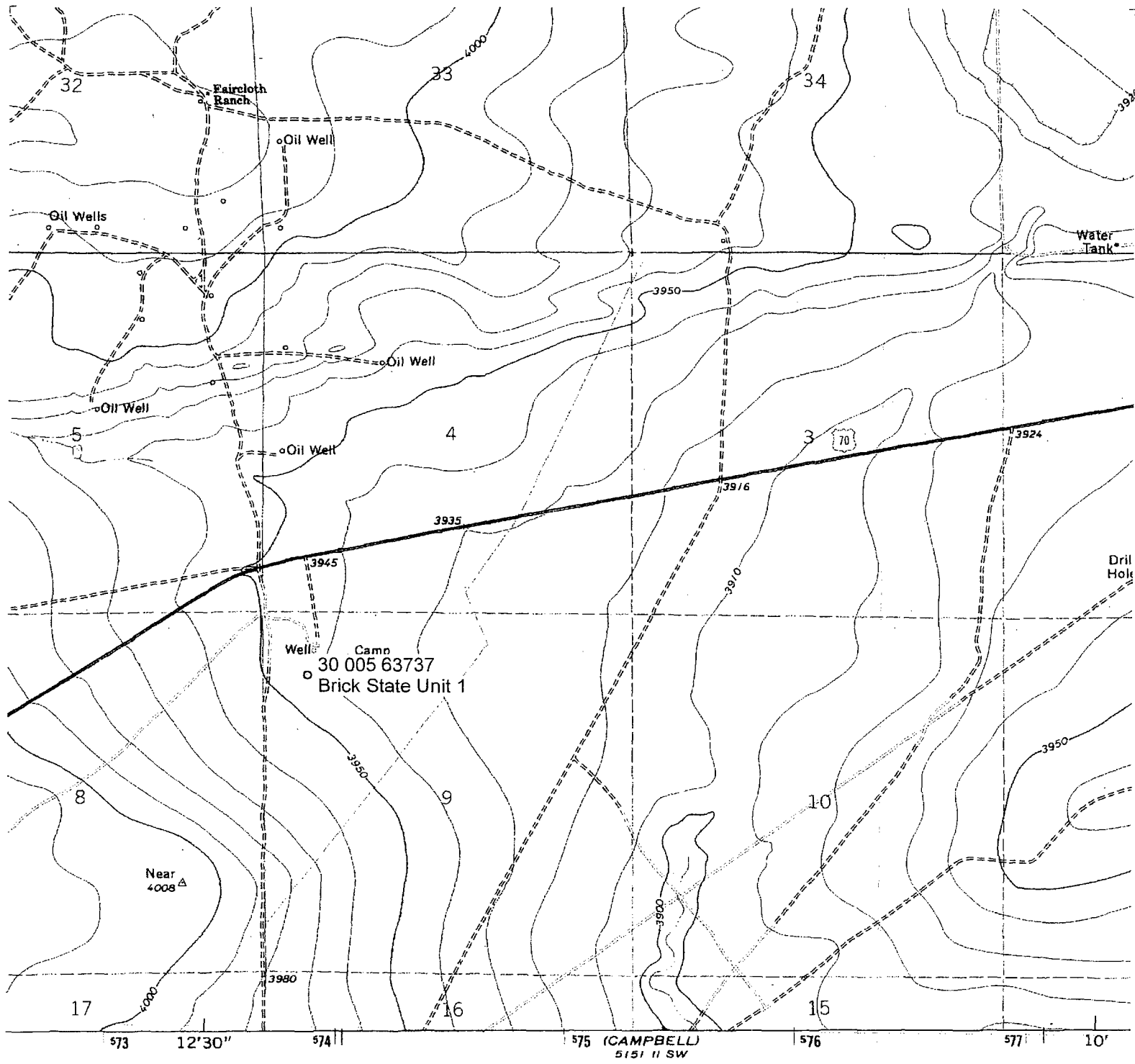
Your certification and NMOCD approval of this application/closure does not relieve the operator of liability should the contents of the pit or tank contaminate ground water or otherwise endanger public health or the environment. Nor does it relieve the operator of its responsibility for compliance with any other federal, state, or local laws and/or regulations.

Approval:

Printed Name/Title Field Supervisor

Signature

OCT 14 2005
Date:



CONTOUR INTERVAL 10 FEET
NATIONAL GEODETIC VERTICAL DATUM OF 1929

THIS MAP COMPLIES WITH NATIONAL MAP ACCURACY STANDARDS
FOR SALE BY U. S. GEOLOGICAL SURVEY, DENVER, COLORADO 80225, OR RESTON, VIRGINIA 22092
A FOLDER DESCRIBING TOPOGRAPHIC MAPS AND SYMBOLS IS AVAILABLE ON REQUEST