

N.M. Oil Cons. DIV-Dist. 2
UNITED STATES
DEPARTMENT OF THE INTERIOR
BUREAU OF LAND MANAGEMENT
1301 W. Grand Avenue
Artesia, NM 88210

FORM APPROVED
OMB No. 1004-0135
Expires: January 31, 2004

SUNDRY NOTICES AND REPORTS ON WELLS
Do not use this form for proposals to drill or to re-enter an abandoned well. Use Form 3160-3 (APD) for such proposals.

SUBMIT IN TRIPLICATE - Other instructions on reverse side

1. Type of Well

☐ Oil Well ☒ Gas Well ☐ Other

2. Name of Operator

Mewbourne Oil Company 14744

3a. Address

PO Box 5270 Hobbs, NM 88240

3b. Phone No. (include area code)

505-393-5905

4. Location of Well (Footage, Sec., T, R., M., or Survey Description)

990' FSL & 1650' FEL Unit O Sec 5-T21S-R29E

RECEIVED

OCT 11 2005

ODD-ARTESIA

5. Lease Serial No.

NM-029588

6. If Indian, Allottee or Tribe Name

7. If Unit or CA/Agreement, Name and/or No.

35055

8. Well Name and No.

Quahada Ridge 5 Federal #1

9. API Well No.

30-015-34291

10. Field and Pool, or Exploratory Area

Golden Lane Morrow

11. County or Parish, State

Eddy County, NM

12. CHECK APPROPRIATE BOX(ES) TO INDICATE NATURE OF NOTICE, REPORT, OR OTHER DATA

TYPE OF SUBMISSION

TYPE OF ACTION

☐ Notice of Intent

☒ Subsequent Report

☐ Final Abandonment Notice

☐ Acidize

☐ Alter Casing

☐ Casing Repair

☐ Change Plans

☐ Convert to Injection

☐ Deepen

☐ Fracture Treat

☐ New Construction

☐ Plug and Abandon

☐ Plug Back

☐ Production (Start/Resume)

☐ Reclamation

☐ Recomplete

☐ Temporarily Abandon

☐ Water Disposal

☐ Water Shut-Off

☐ Well Integrity

☒ Other Casing and Cmt job

3. Describe Proposed or Completed Operation (clearly state all pertinent details, including estimated starting date of any proposed work and approximate duration thereof. If the proposal is to deepen directionally or recompleate horizontally, give subsurface locations and measured and true vertical depths of all pertinent markers and zones. Attach the Bond under which the work will be performed or provide the Bond No. on file with BLM/BIA. Required subsequent reports shall be filed within 30 days following completion of the involved operations. If the operation results in a multiple completion or recompleation in a new interval, a Form 3160-4 shall be filed once testing has been completed. Final Abandonment Notices shall be filed only after all requirements, including reclamation, have been completed, and the operator has determined that the site is ready for final inspection.)

09/27/05...TD'ed 12 1/4" hole @ 3395'. Ran 3395' 9 5/8" 40# K55/N80 LT&C Csg. Cemented with 180 sks Thixsad Class H with additives. Mixed @ 14.6 #/g w/ 1.48 yd. Followed with 1000 sks BJ Lite (35:65:6) Poz Class C with additives. Mixed @ 12.5 #/g w/ 1.98 yd. Tail with 400 sks Class C with 2% CaCl2. Mixed @ 14.8 #/g w/ 1.34 yd. Circulate 120 sks to pit. WOC 18 hrs. At 1:15 am on 09/29/05, test BOPE to 5000#, annular to 2500# and 9 5/8" casing to 1500# for 30 minutes as required. All equipment passed. Charts and schematic attached. Drilled out with 8 3/4" bit.

ACCEPTED FOR RECORD

OCT - 4 2005

LES BABYAK
PETROLEUM ENGINEER

14. I hereby certify that the foregoing is true and correct
Name (Printed/Typed)

Kristi Green

Title Hobbs Regulatory

Signature

Date 09/29/05

THIS SPACE FOR FEDERAL OR STATE OFFICE USE

Approved by (Signature)

Name
(Printed/Typed)

Title

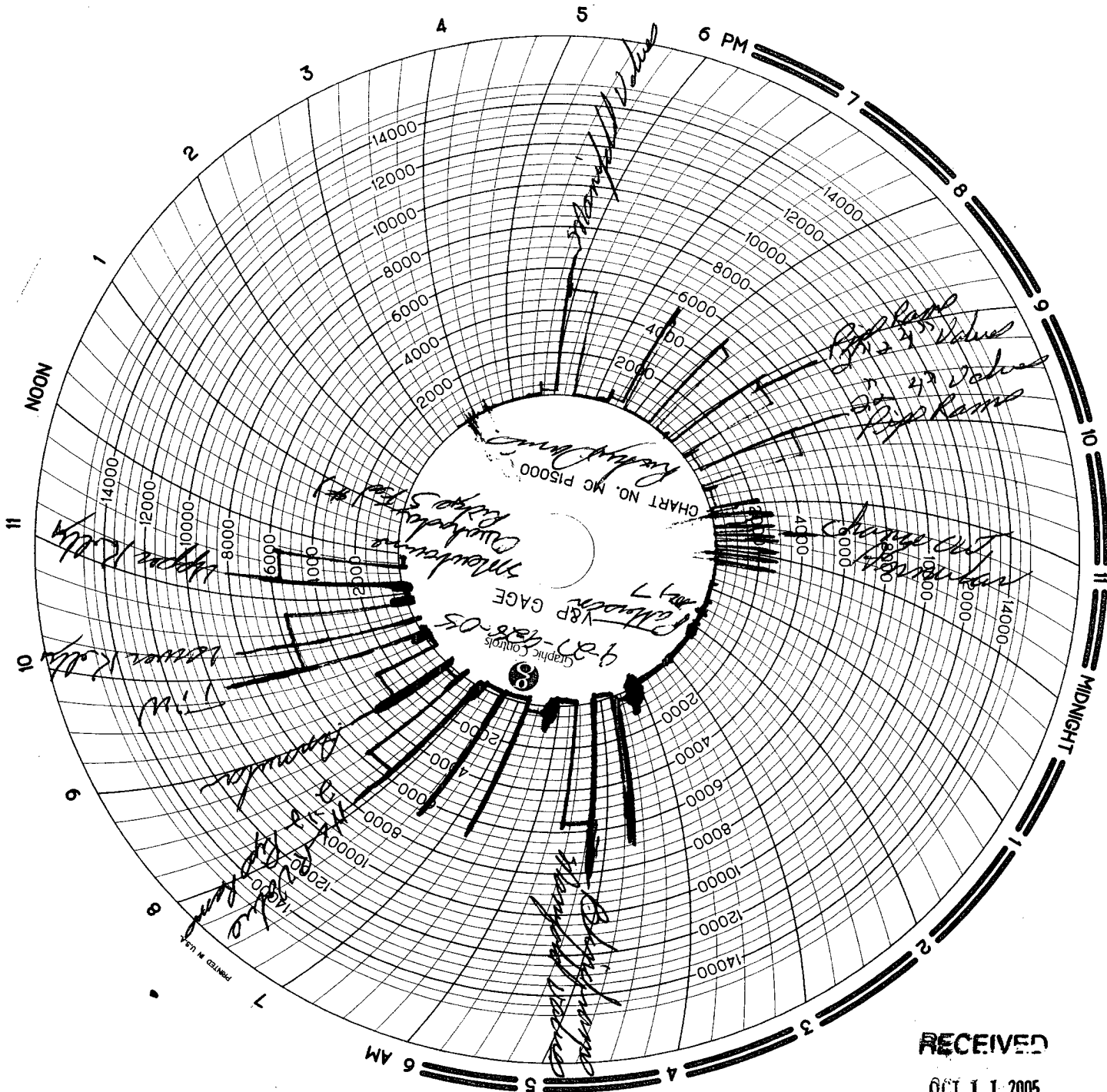
Conditions of approval, if any, are attached. Approval of this notice does not warrant or certify that the applicant holds legal or equitable title to those rights in the subject lease which would entitle the applicant to conduct operations thereon.

Office

Date

Title 18 U.S.C. Section 1001 and Title 43 U.S.C. Section 1212, make it a crime for any person knowingly and willfully to make to any department or agency of the United States any false, fictitious or fraudulent statements or representations as to any matter within its jurisdiction.

(Continued on next page)



RECEIVED
OCT 11 2005
ODD-ANTENNA

SCARBROUGH, INC.

SPECIALIZING IN NEW AND EXPERIENCED EQUIPMENT
VALVE AND CHOKE REPAIR

DELIVERY TICKET

P.O. BOX 1588

PHONE (505) 397-1312

HOBBS, NEW MEXICO 88241-1588

DATE

9-15-05

SOLD TO

PHILSON / UTI

SHIPPED TO

Rig #47

MAILING ADDRESS

CITY, STATE, ZIP

ORDERED BY

Robert LYNN

Quahada Ridge 5 feet #1

QUANTITY ORDERED		UNIT PRICE	AMOUNT
4	hrs labor to inspect operation of closing unit & to change in accumulator spheres, tightened triplex pump packing, cleaned air line filters.		
1	Bottle nitrogen		
110	miles round trip		
	900 to 1100		
	1000 to 1100		
TOTAL			

1 1/2% Per Month added to All Past Due Accounts.

MAN WELDING SERVICES, INC

Company Mechanics Oil Date 9-27-05
Lease Quadrant Ridge - 3000 County Eddy
Drilling Contractor Latham 17 Plug & Drill Pipe Size 11" C22 2 1/2 X H

Accumulator Function Test - OO&GO#2

To Check - USABLE FLUID IN THE NITROGEN BOTLES (III.A.2.c.i. or ii or iii)

- Make sure all rams and annular are open and if applicable HCR is closed.
- Ensure accumulator is pumped up to working pressure! **(Shut off all pumps)**
 1. Open HCR Valve. (If applicable)
 2. Close annular.
 3. Close **all** pipe rams.
 4. Open one set of the pipe rams to simulate closing the blind ram.
 5. For 3 ram stacks, open the annular to achieve the 50+ % safety factor. (5M and greater systems).
 6. **Record remaining pressure** 1300 **psi. Test Fails if pressure is lower than required.**
 - a. {950 psi for a 1500 psi system} b. {1200 psi for a 2000 & 3000 psi system }
 7. If annular is closed, open it at this time and close HCR.

To Check - PRECHARGE ON BOTTLES OR SPHERICAL (III.A.2.d.)

- Start with manifold pressure at, or above, maximum acceptable pre-charge pressure:
 - a. {800 psi for a 1500 psi system} b. {1100 psi for 2000 and 3000 psi system}
- 1. Open bleed line to the tank, slowly. **(gauge needle will drop at the lowest bottle pressure)**
- 2. Close bleed line. Barely bump electric pump and see what pressure the needle jumps up to.
- 3. **Record pressure drop** 1150 **psi. Test fails if pressure drops below minimum.**
- **Minimum:** a. {700 psi for a 1500 psi system } b. {900 psi for a 2000 & 3000 psi system }

To Check - THE CAPACITY OF THE ACCUMULATOR PUMPS (III.A.2.f.)

- Isolate the accumulator bottles or spherical from the pumps & manifold.
- Open the bleed off valve to the tank, {manifold psi should go to 0 psi} close bleed valve.
 1. Open the HCR valve, {if applicable}
 2. Close annular
 3. With **pumps** only, time how long it takes to regain the required manifold pressure.
 4. **Record elapsed time** 1:29 **. Test fails if it takes over 2 minutes.**
 - a. {950 psi for a 1500 psi system} b. {1200 psi for a 2000 & 3000 psi system}