

DISTRICT I
1625 N. French Dr., Hobbs, NM 88240

DISTRICT II
1301 W. Grand Avenue, Artesia, NM 88210

DISTRICT III
1000 Rio Brazos Rd., Aztec, NM 87410

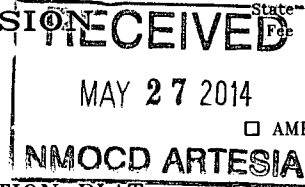
DISTRICT IV
1220 S. St. Francis Dr., Santa Fe, NM 87505

State of New Mexico
Energy, Minerals and Natural Resources Department

Form C-102
Revised October 12, 2005

OIL CONSERVATION DIVISION
1220 South St. Francis Dr.
Santa Fe, New Mexico 87505

Submit to Appropriate District Office
State Lease - 4 Copies
Fee Lease - 3 Copies



☐ AMENDED REPORT

WELL LOCATION AND ACREAGE DEDICATION PLAT

API Number 30-015-36217	Pool Code 15011	Pool Name Culebra Bluff: Bone Spring, South
Property Code 38046	Property Name PINNACLE STATE	Well Number 23
OGRID No. 246289	Operator Name RKI EXPLORATION & PRODUCTION	Elevation 3110'

Surface Location

UL or lot No.	Section	Township	Range	Lot Idn	Feet from the	North/South line	Feet from the	East/West line	County
0	36	22 S	28 E		965	SOUTH	1865	EAST	EDDY

Bottom Hole Location If Different From Surface

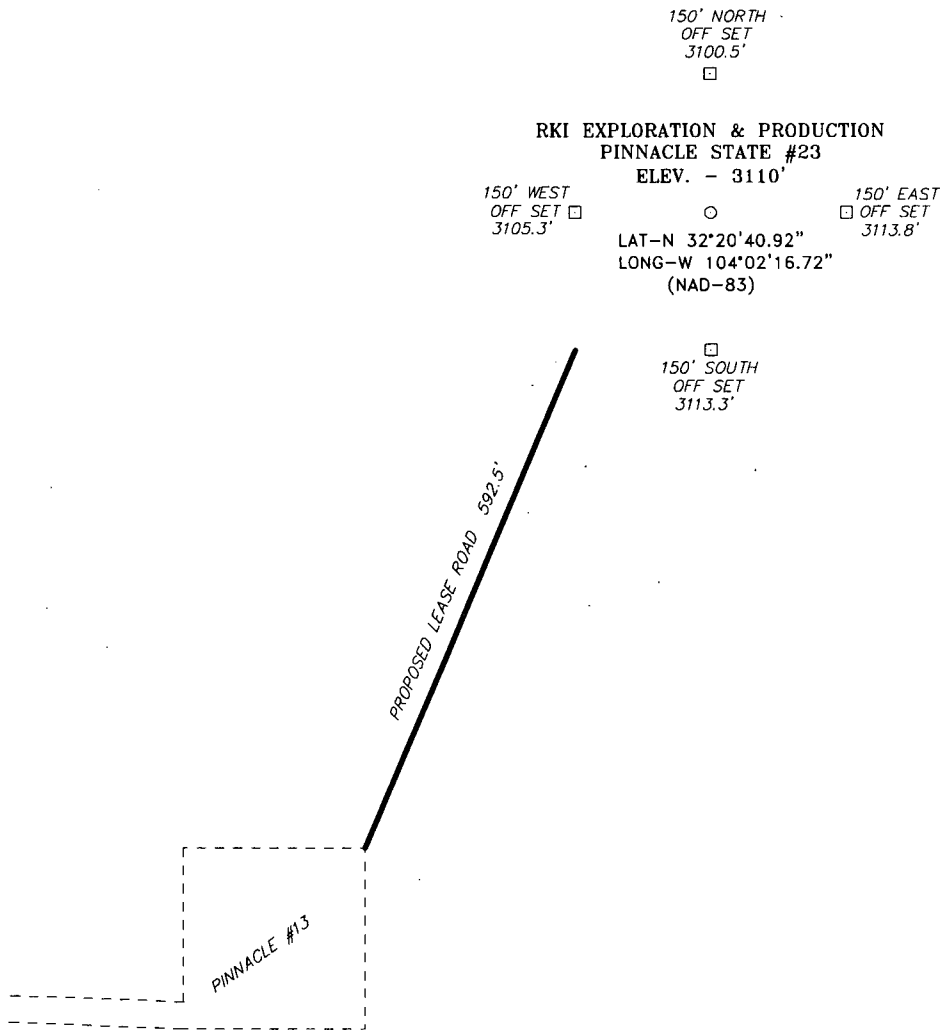
UL or lot No.	Section	Township	Range	Lot Idn	Feet from the	North/South line	Feet from the	East/West line	County

Dedicated Acres 80	Joint or Infill	Consolidation Code	Order No.
-----------------------	-----------------	--------------------	-----------

NO ALLOWABLE WILL BE ASSIGNED TO THIS COMPLETION UNTIL ALL INTERESTS HAVE BEEN CONSOLIDATED
OR A NON-STANDARD UNIT HAS BEEN APPROVED BY THE DIVISION.

<p>PINNACLE 23 ACREAGE DEDICATION = 80 ACRES W/2 SE/4</p>	<p>SURFACE LOCATION LAT N.: 32°20'40.92" LONG W.: 104°02'16.72" N.: 489234.475 E.: 632550.288 (NAD-83)</p>	<p>1865'</p> <p>965'</p>	<p>OPERATOR CERTIFICATION</p> <p>I hereby certify that the information contained herein is true and complete to the best of my knowledge and belief, and that this organization either owns a working interest or unleased mineral interest in the land including the proposed bottom hole location pursuant to a contract with an owner of such a mineral or working interest, or to a voluntary pooling agreement or a compulsory pooling order heretofore entered by the division.</p> <p><i>Charles K. Ahn</i> 5/01/2013 Signature Date</p> <p>Charles K. Ahn Printed Name</p>
			<p>SURVEYOR CERTIFICATION</p> <p>I hereby certify that the well location shown on this plat was plotted from field notes of actual surveys made by me or under my supervision, and that the same is true and correct to the best of my belief.</p> <p>FEBRUARY 17, 2008 Date Surveyed</p> <p><i>Gary L. Jones</i> Signature of Professional Surveyor</p> <p>W.C. 10215 Professional Surveyor No.</p> <p>Certificate No. Gary L. Jones 7977</p> <p>BASIN SURVEYS</p>

SECTION 36, TOWNSHIP 22 SOUTH, RANGE 28 EAST, N.M.P.M.,
EDDY COUNTY, NEW MEXICO.



DIRECTIONS TO LOCATION:

FROM THE JUNCTION OF CO. RD. 605 AND STATE HWY. 31, GO NORTHWEST ON CO. RD. 605 FOR APPROX. 1.9 MILES TO LEASE ROAD, ON LEASE ROAD GO NORTHEAST FOR APPROX. 0.3 MILES TO LEASE ROAD, ON LEASE ROAD GO EAST TO PROPOSED LEASE ROAD AT PINNACLE #13 LOCATION.

200 0 200 400 FEET

SCALE: 1" = 200'

RKI EXPLORATION & PRODUCTION

REF: PINNACLE STATE #23/ Well Pad Topo

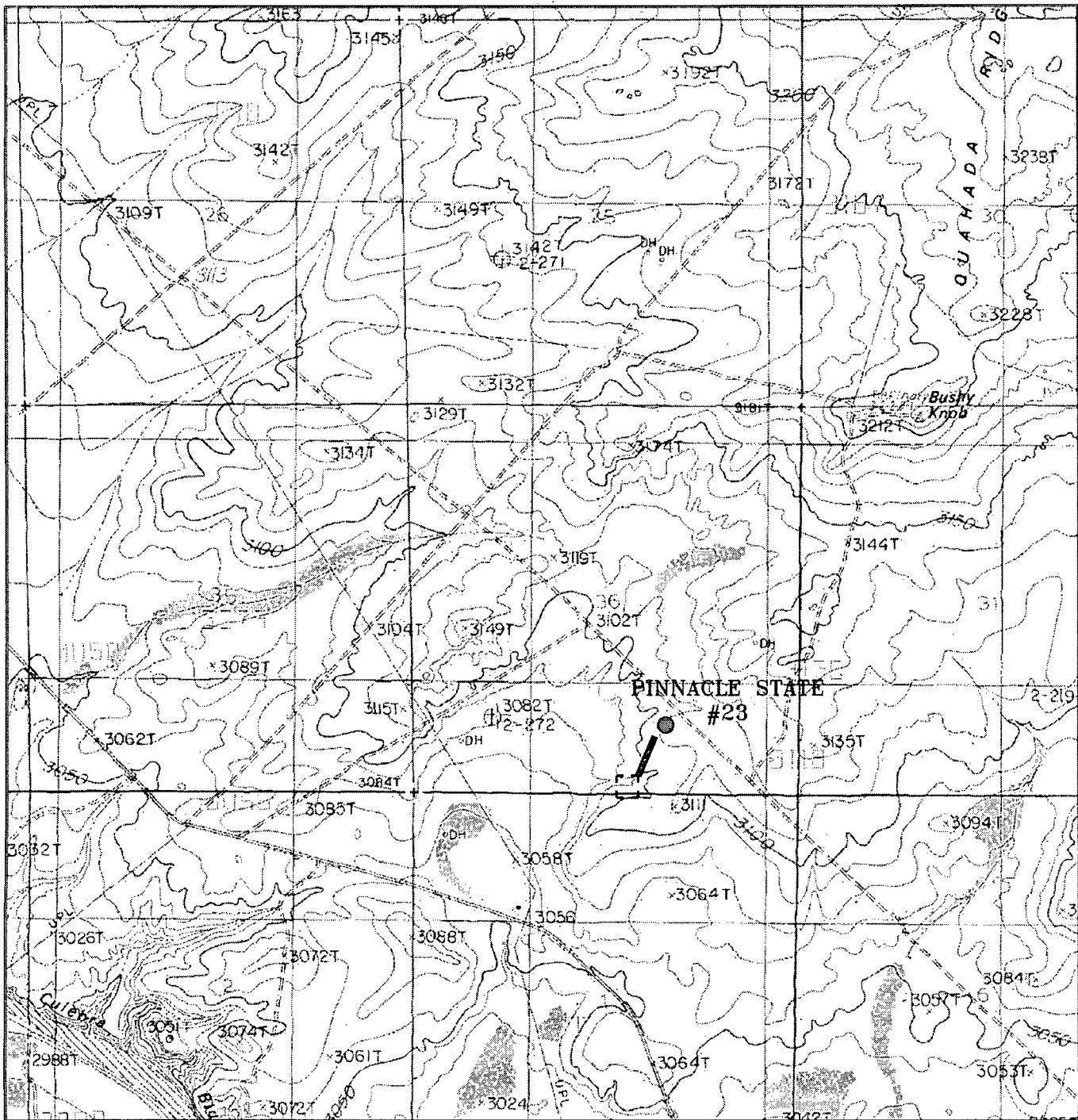
THE PINNACLE STATE #23 LOCATED 965' FROM
THE SOUTH LINE AND 1865' FROM THE EAST LINE OF
SECTION 36, TOWNSHIP 22 SOUTH, RANGE 28 EAST,
N.M.P.M., EDDY COUNTY, NEW MEXICO.

BASIN SURVEYS P.O. BOX 1786 - HOBBS, NEW MEXICO

W.O. Number: 19217 Drawn By: J. M. SMALL

Date: 02-19-2008 Disk: JMS 19217W

Survey Date: 02-17-2008 Sheet 1 of 1 Sheets



PINNACLE STATE #23

Located at 965' FSL AND 1865' FEL
 Section 36, Township 22 South, Range 28 East,
 N.M.P.M., Eddy County, New Mexico.



P.O. Box 1786
 1120 N. West County Rd.
 Hobbs, New Mexico 88241
 (505) 393-7316 - Office
 (505) 392-3074 - Fax
 basinsurveys.com

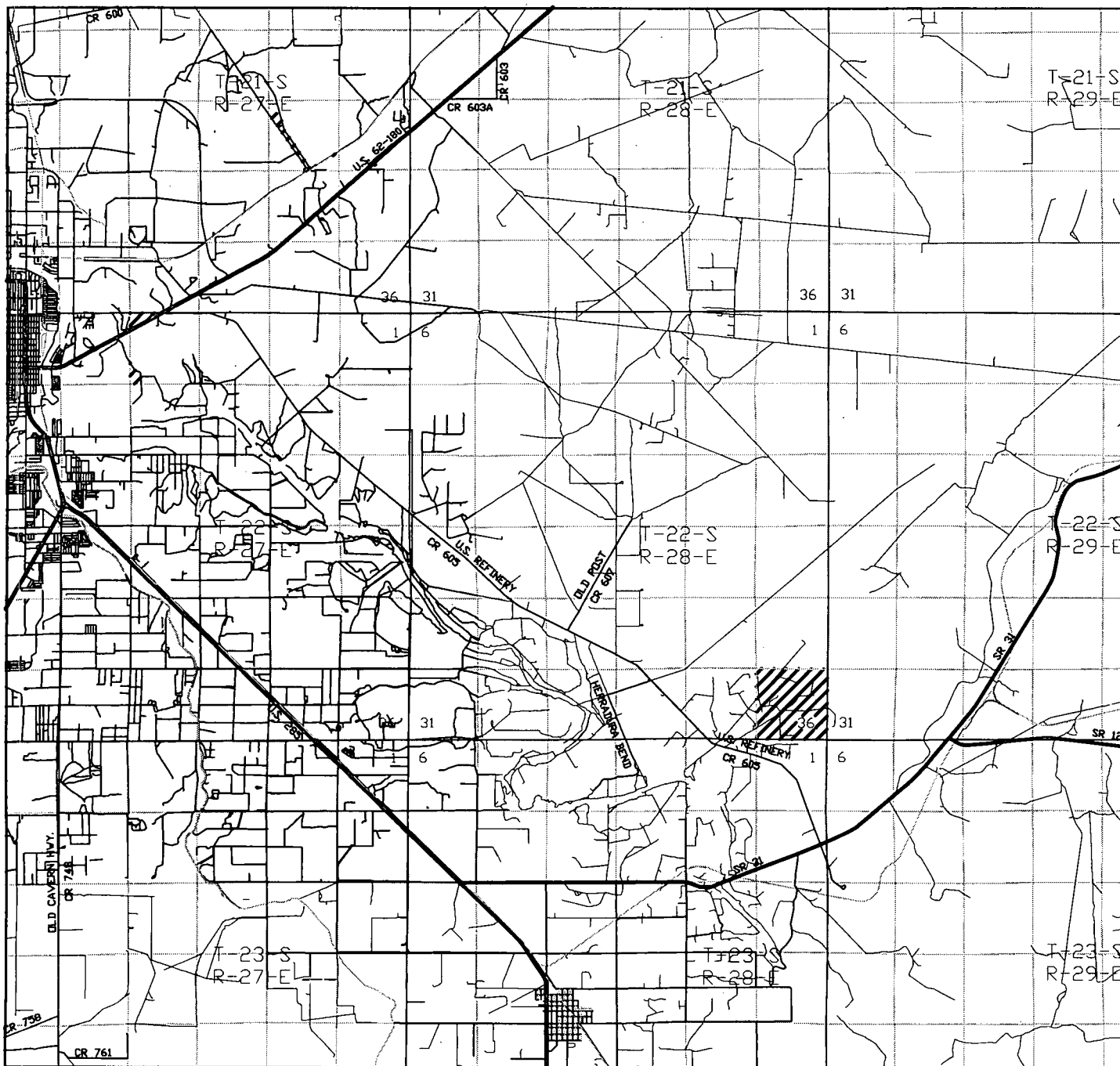
W.O. Number: 19217T

Survey Date: 02-17-2008

Scale: 1" = 2000'

Date: 02-19-2008

RKI
EXPLORATION &
PRODUCTION



PINNACLE STATE #23

Located at 965' FSL and 1865' FWL

Section 36, Township 22 South, Range 28 East,
N.M.P.M., Eddy County, New Mexico.

basin
surveys

focused on excellence
in the oilfield

P.O. Box 1786
1120 N. West County Rd.
Hobbs, New Mexico 88241
(505) 393-7316 - Office
(505) 392-3074 - Fax
basinsurveys.com

W.O. Number: JMS 19216TR

Survey Date: 02-17-2008

Scale: 1" = 2 MILES

Date: 02-19-2008

RKI
EXPLORATION &
PRODUCTION