

DISTRICT I
1625 N. French Dr., Hobbs, NM 88240
Phone (505) 393-6161 Fax: (505) 393-0720

DISTRICT II
811 S. First St., Artesia, NM 88210
Phone (505) 748-1253 Fax: (505) 748-9720

DISTRICT III
1000 Rio Brazos Rd., Aztec, NM 87410
Phone (505) 334-6178 Fax: (505) 334-6170

DISTRICT IV
1825 S. St. Francis Dr., Santa Fe, NM 87606
Phone (505) 478-3480 Fax: (505) 478-3482

NM OIL CONSERVATION
ARTESIA DISTRICT

State of New Mexico
Energy, Minerals and Natural Resources Department

Form C-102
Revised August 1, 2011

Submit one copy to appropriate
District Office

OIL CONSERVATION DIVISION
1225 South St. Francis Dr.
Santa Fe, New Mexico 87505

WELL LOCATION AND ACREAGE DEDICATION PLAT

AMENDED REPORT
"As drilled"

API Number 30-015-41033	Pool Code 96620	Pool Name Corral Canyon; Delaware, South
Property Code 306402	Property Name POKER LAKE UNIT.	Well Number 421H
OGRID No. 260737	Operator Name BOPCO, L.P.	Elevation 3272

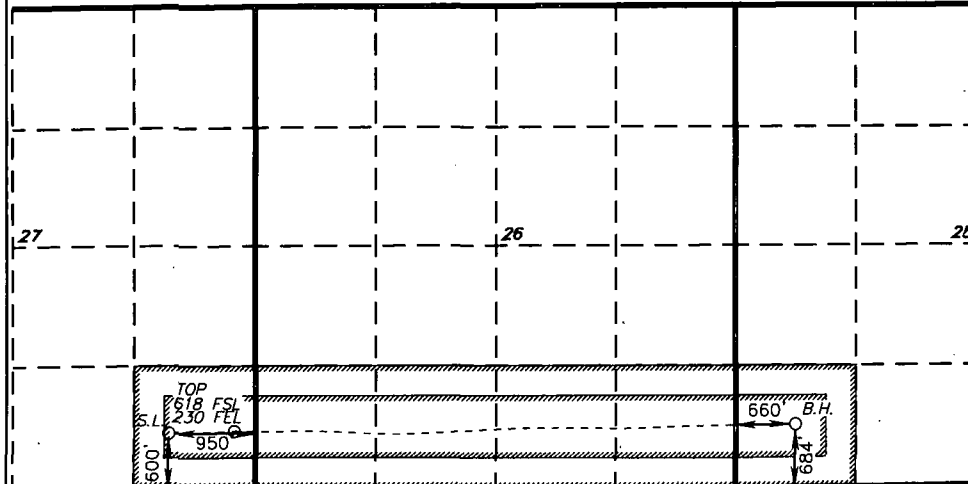
Surface Location

UL or lot No. P	Section 27	Township 25 S	Range 30 E	Lot Idn	FEET from the 600	North/NORTH LINE SOUTH	FEET from the 950	East/EAST LINE EAST	County EDDY
--------------------	---------------	------------------	---------------	---------	----------------------	---------------------------	----------------------	------------------------	----------------

Bottom Hole Location If Different From Surface

UL or lot No. M	Section 25	Township 25 S	Range 30 E	Lot Idn	FEET from the 684	North/NORTH LINE SOUTH	FEET from the 660	East/EAST LINE WEST	County EDDY
Dedicated Acres 240	Joint or Infill	Consolidation Code	Order No.						

NO ALLOWABLE WILL BE ASSIGNED TO THIS COMPLETION UNTIL ALL INTERESTS HAVE BEEN CONSOLIDATED
OR A NON-STANDARD UNIT HAS BEEN APPROVED BY THE DIVISION



SURFACE LOCATION
Lat - N 32°05'43.35"
Long - W 103°51'46.80"
NMSPC- N 398738.6
E 645641.4
(NAD-27)

BOTTOM
HOLE LOCATION
Lat - N 32°05'44.14"
Long - W 103°50'26.61"
NMSPC- N 398849.6
E 652548.1
(NAD-27)

OPERATOR CERTIFICATION

I hereby certify that the information contained herein is true and complete to the best of my knowledge and belief, and that this organization either owns a working interest or unleased mineral interest in the land including the proposed bottom hole location or has a right to drill this well at this location pursuant to a contract with an owner of such a mineral or working interest, or to a voluntary pooling agreement or a compulsory pooling order heretofore entered by the division.

Signature: *Tracie J Cherry* Date: 07-07-14

Tracie J Cherry

Printed Name
tjcherry@basspet.com

Email Address

SURVEYOR CERTIFICATION

I hereby certify that the well location shown on this plat was plotted from field notes of actual surveys made by me or under my supervision, and that the same is true and correct to the best of my belief.

DECEMBER 31, 2013

Date Surveyed
Signature & Seal of
Professional Surveyor

7977

Certificate No. 7977
Drawn by: [Signature]

0' 500' 1000' 1500' 2000'
SCALE: 1" = 1000'
WO Num.: 29944