

DISTRICT I
1625 N. French Dr., Hobbs, NM 88240

DISTRICT II
1301 W. Grand Avenue, Artesia, NM 88210

DISTRICT III
1000 Rio Brazos Rd., Aztec, NM 87410

DISTRICT IV
1220 S. St. Francis Dr., Santa Fe, NM 87505

State of New Mexico
Energy, Minerals and Natural Resources Department

OIL CONSERVATION DIVISION
1220 South St. Francis Dr.
Santa Fe, New Mexico 87505

NM OIL CONSERVATION
ARTESIA DISTRICT
OCT 10 2014

Form C-102
Revised July 18, 2010
Submit one copy to appropriate District Office

RECEIVED

WELL LOCATION AND ACREAGE DEDICATION PLAT

AMENDED REPORT
As Drilled

API Number 30-015-42218	Pool Code 97646	Pool Name HACKBERRY; BONE SPRINGS, EAST
Property Code 305860	Property Name BIG EDDY UNIT	Well Number 258H
OGRID No. 260737	Operator Name BOPCO, L.P.	Elevation 3472'

Surface Location

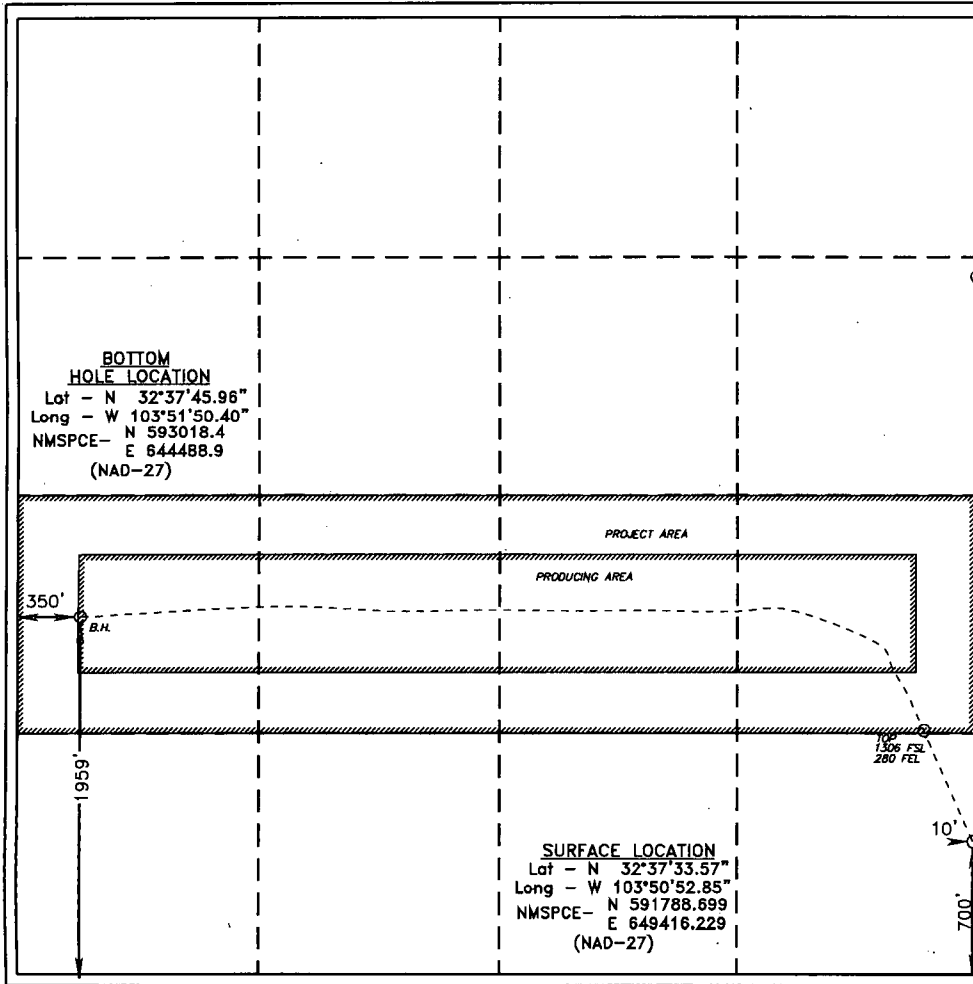
UL or lot No.	Section	Township	Range	Lot Idn	Feet from the	North/South line	Feet from the	East/West line	County
P	27	19 S	31 E		700	SOUTH	10	EAST	EDDY

Bottom Hole Location If Different From Surface

UL or lot No.	Section	Township	Range	Lot Idn	Feet from the	North/South line	Feet from the	East/West line	County
L	27	19 S	31 E		1959	SOUTH	350	WEST	EDDY

Dedicated Acres 160	Joint or Infill	Consolidation Code	Order No.
------------------------	-----------------	--------------------	-----------

NO ALLOWABLE WILL BE ASSIGNED TO THIS COMPLETION UNTIL ALL INTERESTS HAVE BEEN CONSOLIDATED OR A NON-STANDARD UNIT HAS BEEN APPROVED BY THE DIVISION



OPERATOR CERTIFICATION

I hereby certify that the information contained herein is true and complete to the best of my knowledge and belief, and that this organization either owns a working interest or unleased mineral interest in the land including the proposed bottom hole location or has a right to drill this well at this location pursuant to a contract with an owner of such a mineral or working interest, or to a voluntary pooling agreement or a compulsory pooling order heretofore entered by the division.

Signature: *Tracie J Cherry* Date: 10/9/14

Printed Name: Tracie J Cherry

Email Address: tjcherry@basspet.com

SURVEYOR CERTIFICATION

I hereby certify that the well location shown on this plat was plotted from field notes of actual surveys made by me or under my supervision, and that the same is true and correct to the best of my belief.

Date Surveyed: JANUARY 6 2012

Signature: *[Signature]* Professional Surveyor

Certificate No. Gary L. Jones 7977

BASIN SURVEYS 25997