

State of New Mexico
Energy, Minerals and Natural Resources Department

Susana Martinez
Governor

David Martin
Cabinet Secretary- Designate

Brett F. Woods, Ph.D.
Deputy Cabinet Secretary

Jami Bailey; Division Director
Oil Conservation Division



October 10, 2014

I, Lewis R. Dade, rescind (Deny) the approved C-103 for well 30-015-27047. The C-103 was submitted on 09/15/2014 and approved that same date. The information on the C-103 stated that the flare was to be set on this location. The Julie # 2 location is in section 17, township 19S, range 25E. API # 30-015-27047. I was informed that the flare was set on the Roy AET #1; API # 30-015-25905; sec8, township 19S, range 25E. Due to being misinformed and given information that was not accurate, the document mentioned is denied. If there are any questions, please call the Artesia OCD Office. 575-748-1283 ext. 102

Randy Dade
EMNRD OCD District II
District Supervisor

OCT 10 2014

10/08/2014

RECEIVED

New Mexico Oil Conservation Division,

My name is Cheryl Griffith and I a Representative for the James H & Betty R Howell Revocable Trust. On 10/07/2014 I went in to the office located at 811 South First Street, Artesia, NM and had a one on one conversation with Randy Dade concerning a Sundry Notice that had been approved for Yates Petroleum to have a flare on a location they are calling the Julie in Section 17,19s,25e. I asked Mr. Dade to rescind the Sundry Notice and deny any requests based on the following facts:

1. The Sundry Notice has incorrect information. The tank battery is located in Section 8, 19s, 25e at the Roy #1. It also says the intent is to extend reclamation.
2. This tank battery is approximately 22 years old and has never had a flare. There was no agreement with Yates to have a flare on this site.
3. Yates moved the tank battery from the south side to the north and made a verbal agreement with the landowner at that time that there would be no lights or flares added to this location.
4. Yates is temporarily shut in due to a fatality that has caused gas lines to be replaced. Agave Energy reports they will be back on line in 3 weeks.
5. We made an agreement with Yates to have a temporary flare for 90 days on the north side of the tank battery but told them we needed an agreement in writing first. We are still waiting for the contract.
6. The placement of the flare is within the right of way of one of Centurian's Pipelines.
7. The flare is in our line of sight from our home to Betty Howell's home. She is 85 years old. At night we would not be able to see her home due to the light of the flare and it would endanger her and the ranch headquarters which contains all of our equipment, etc.
8. Yates Petroleum would be unable to meet the conditions of approval for flaring and venting gas at this site.

In closing I would like to say that we try very hard to coexist with the oil and gas industry while trying to preserve our way of life. We have not had any flares on this ranch that we can recall since the purchase in 1990 and would like to continue our way of life by being able to turn off a switch and have all of the lights out for the night.

Sincerely,

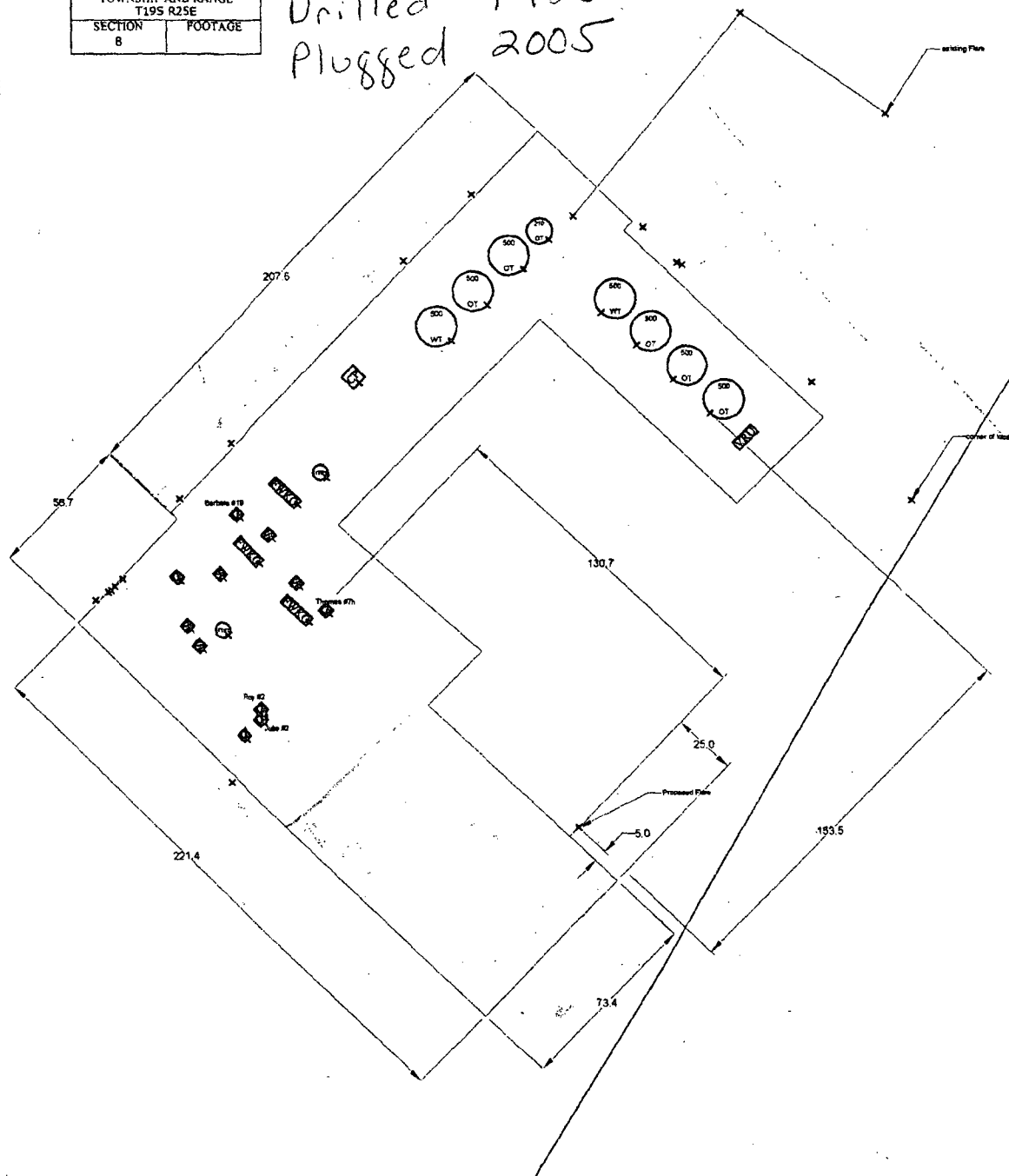

Cheryl L. Griffith

Howell Ranch:

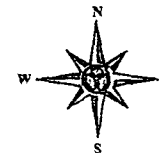
1992 Julie #2
 2014 Thomas #7H
 1990 Roy #2
 2014 Roy #6H
 1992 Barbara #19
 1992 Roy 4-

TOWNSHIP AND RANGE	
T19S R2SE	
SECTION	FOOTAGE
8	

Roy Tank Battery
 Roy #1 Site- Plugged
 Drilled 1988
 Plugged 2005



185 SOUTH FOURTH (575) 748-1471
 ARTESIA, NEW MEXICO 88210



LEGEND

— GPS ROADS

NM STATE
 US BUREAU OF LAND MANAGEMENT

DRAWN BY: JAH
 DATE DRAWN: 09-12-14
 COUNTY: EDDY
 STATE: NEW MEXICO
 SHEET NUMBER: 1 OF 1
 SCALE: 1/64 scale

THIS MAP HAS BEEN CAREFULLY COMPILED AND PRINTED BY YATES PETROLEUM CORPORATION FROM AVAILABLE INFORMATION. YATES PETROLEUM CORPORATION DOES NOT GUARANTEE THE ACCURACY OF THIS MAP OR INFORMATION DELINEATED THEREON. NOR DOES YATES PETROLEUM CORPORATION ASSUME RESPONSIBILITY FOR ANY RELIANCE THEREON. RECIPIENT AGREES NOT TO COPY, DISTRIBUTE OR DIGITIZE THIS MAP WITHOUT EXPRESS CONSENT FROM YATES PETROLEUM CORPORATION OR ITS AFFILIATES.

TITLE: