

District I  
1625 N. French Dr., Hobbs, NM 88240  
Phone: (575) 393-6161 Fax: (575) 393-0720  
District II  
111 S. First St., Artesia, NM 88210  
Phone: (575) 748-1283 Fax: (575) 748-9720  
District III  
1000 Rio Brazos Road, Aztec, NM 87410  
Phone: (505) 334-6178 Fax: (505) 334-6170  
District IV  
1220 S. St. Francis Dr., Santa Fe, NM 87505  
Phone: (505) 476-3460 Fax: (505) 476-3462

**WELL LOCATION AND ACREAGE DEDICATION PLAT**

<sup>1</sup> API Number <b>30-015-42809</b>	<sup>2</sup> Pool Code <b>60660</b>	<sup>3</sup> Pool Name <b>Turkey Track; Bone Spring</b>
<sup>4</sup> Property Code <b>38433</b>	<sup>5</sup> Property Name <b>DIAMOND PWU 22</b>	
<sup>7</sup> OGRID No. <b>6137</b>	<sup>8</sup> Operator Name <b>DEVON ENERGY PRODUCTION COMPANY, L.P.</b>	<sup>6</sup> Well Number <b>11H</b>
		<sup>9</sup> Elevation <b>3332.1</b>

<sup>10</sup> Surface Location

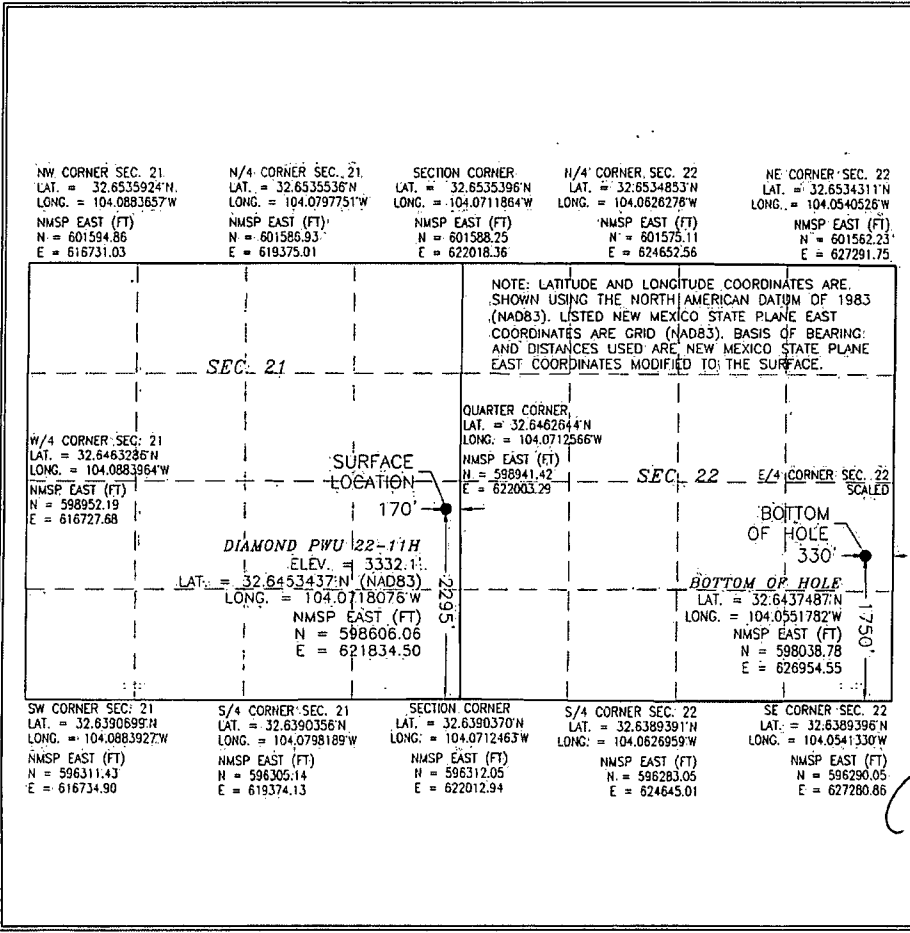
UL or lot no.	Section	Township	Range	Lot Idn	Feet from the	North/South line	Feet from the	East/West line	County
I	21	19 S	29 E		2295	SOUTH	170	EAST	EDDY

<sup>11</sup> Bottom Hole Location, If Different From Surface

UL or lot no.	Section	Township	Range	Lot Idn	Feet from the	North/South line	Feet from the	East/West line	County
I	22	19 S	29 E		1750	SOUTH	330	EAST	EDDY

<sup>12</sup> Dedicated Acres <b>160.00</b>	<sup>13</sup> Joint or Infill	<sup>14</sup> Consolidation Code	<sup>15</sup> Order No.
--	-------------------------------	----------------------------------	-------------------------

No allowable will be assigned to this completion until all interests have been consolidated or a non-standard unit has been approved by the division.



**<sup>17</sup> OPERATOR CERTIFICATION**  
I hereby certify that the information contained herein is true and complete to the best of my knowledge and belief, and that this organization either owns a working interest or unleased mineral interest in the land including the proposed bottom hole location or has a right to drill this well at this location pursuant to a contract with an owner of such a mineral or working interest, or to a voluntary pooling agreement or a compulsory pooling order heretofore entered by the division.

*Linda Good* 11/24/2014  
Signature Date

Linda Good  
Printed Name

linda.good@dvn.com  
E-mail Address

**<sup>18</sup> SURVEYOR CERTIFICATION**  
I hereby certify that the well location shown on this plat was plotted from field notes of actual surveys made by me or under my supervision and that the same is true and correct to the best of my belief.

OCTOBER 16, 2014

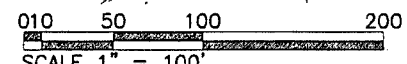
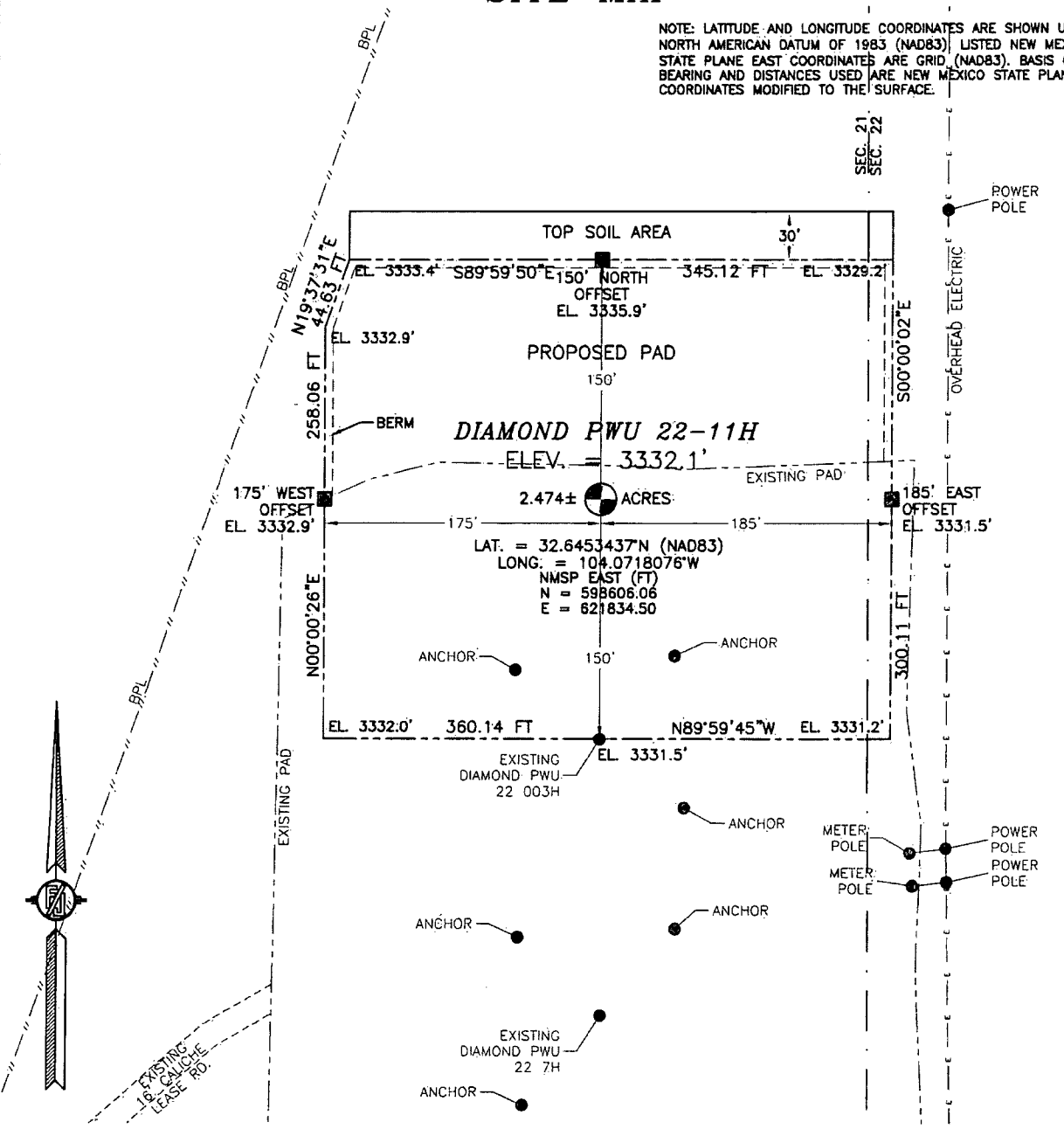
Date of Survey

*[Signature]*  
Signature and Seal of Professional Surveyor

Certificate Number: **FRANCIS P. SARAMILLO, PLS 12797**  
SURVEY NO. 3413

**SECTION 21, TOWNSHIP 19 SOUTH, RANGE 29 EAST, N.M.P.M.  
EDDY COUNTY, STATE OF NEW MEXICO  
SITE MAP**

NOTE: LATITUDE AND LONGITUDE COORDINATES ARE SHOWN USING THE NORTH AMERICAN DATUM OF 1983 (NAD83). LISTED NEW MEXICO STATE PLANE EAST COORDINATES ARE GRID (NAD83). BASIS OF BEARING AND DISTANCES USED ARE NEW MEXICO STATE PLANE EAST COORDINATES MODIFIED TO THE SURFACE.



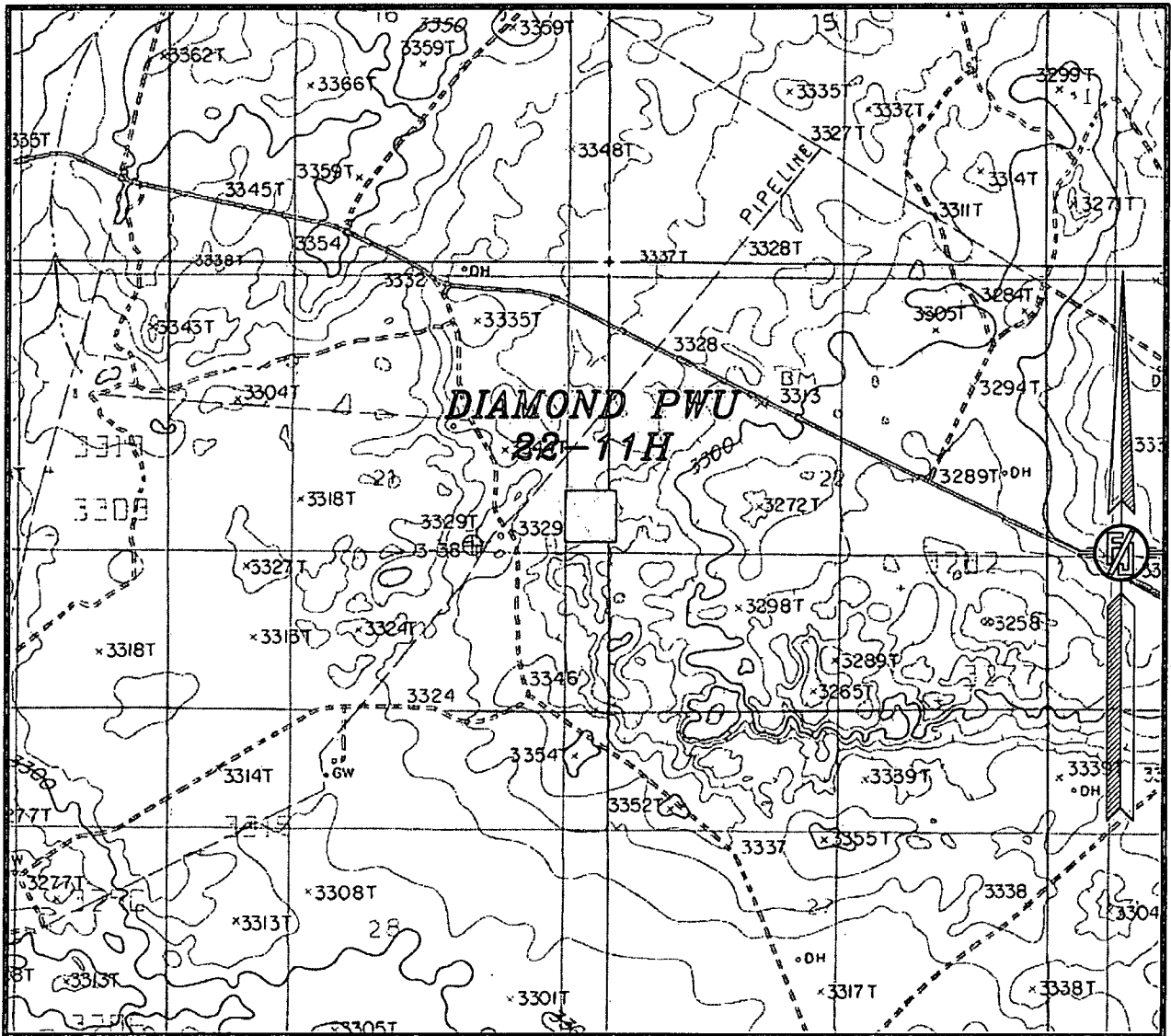
**DIRECTIONS TO LOCATION**  
FROM THE INTERSECTION OF ILLINOIS CAMP ROAD (CR 208) AND CURRY COMB ROAD (CR 235) GO SOUTHEAST ON CR 235 3.02 MILES TO INTERSECTION OF CR 248 AND CR 235 TURN LEFT ON CR 235 (CURRY COMB ROAD) GO EAST ON CR 235 ABOUT 8.0 MILES ROAD "S" RIGHT GO SOUTH ABOUT 0.63 MILES TO CALICHE LEASE ROAD ON LEFT GOES TO EXISTING WELLS TO DIAMOND PWU 22 7H & 003H GO EAST 0.12 MILES TO EXISTING PAD SITE IS NORTH OF EXISTING PAD.

**DEVON ENERGY PRODUCTION COMPANY, L.P.  
DIAMOND PWU 22-11H  
LOCATED 2295 FT. FROM THE SOUTH LINE  
AND 170 FT. FROM THE EAST LINE OF  
SECTION 21, TOWNSHIP 19 SOUTH,  
RANGE 29 EAST, N.M.P.M.  
EDDY COUNTY, STATE OF NEW MEXICO**

OCTOBER 16, 2014

SURVEY NO. 3413

SECTION 21, TOWNSHIP 19 SOUTH, RANGE 29 EAST, N.M.P.M.  
 EDDY COUNTY, STATE OF NEW MEXICO  
 LOCATION VERIFICATION MAP



USGS QUAD MAP:  
 ILLINOIS CAMP, NE

NOT TO SCALE

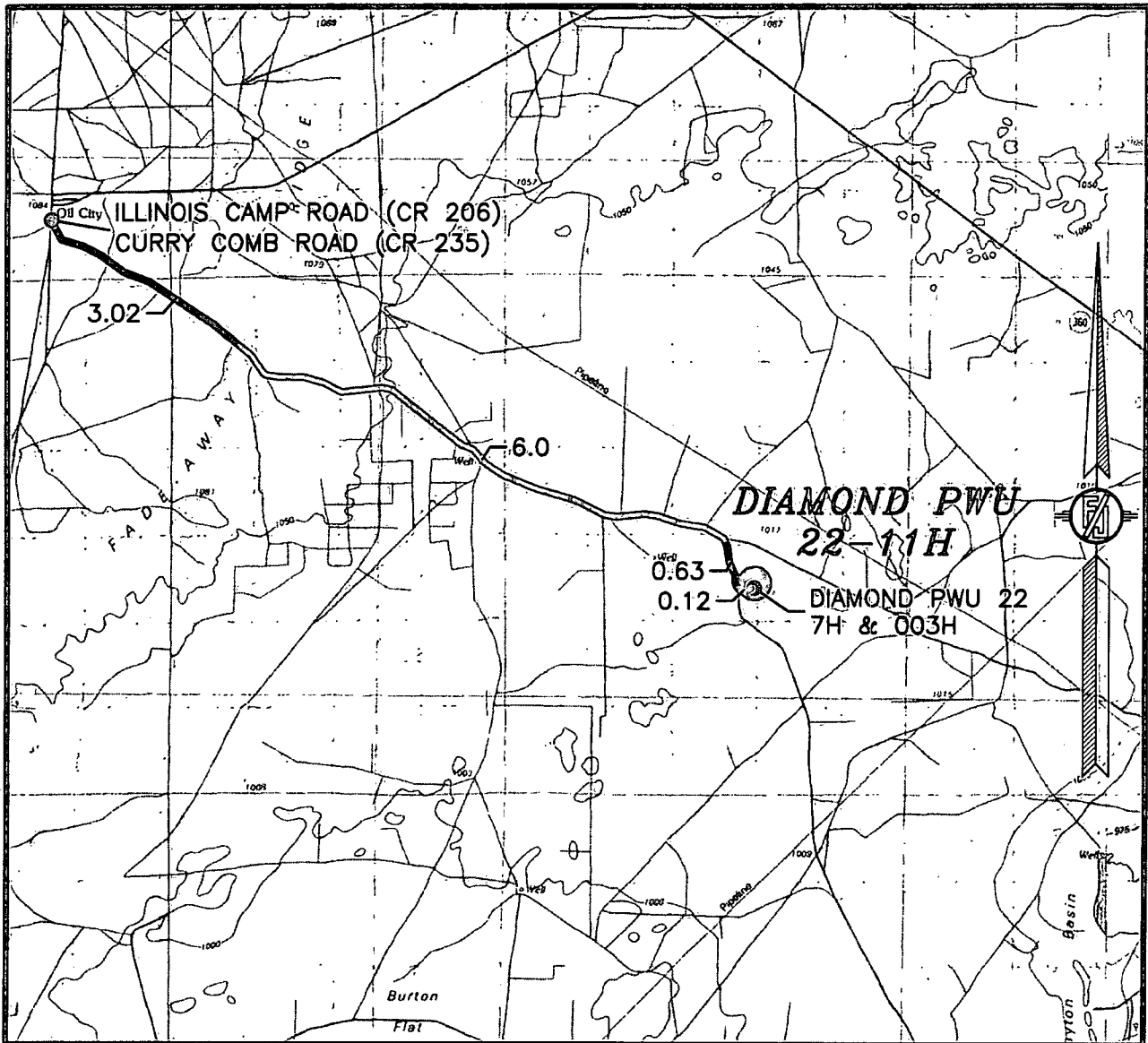
DEVON ENERGY PRODUCTION COMPANY, L.P.  
 DIAMOND PWU 22-11H  
 LOCATED 2295 FT. FROM THE SOUTH LINE  
 AND 170 FT. FROM THE EAST LINE OF  
 SECTION 21, TOWNSHIP 19 SOUTH,  
 RANGE 29 EAST, N.M.P.M.  
 EDDY COUNTY, STATE OF NEW MEXICO

OCTOBER 16, 2014

SURVEY NO. 3413

MADRON SURVEYING, INC. 301 SOUTH CANAL (575) 234-3341 CARLSBAD, NEW MEXICO

SECTION 21, TOWNSHIP 19 SOUTH, RANGE 29 EAST, N.M.P.M.  
 EDDY COUNTY, STATE OF NEW MEXICO  
 VICINITY MAP



DISTANCES IN MILES

NOT TO SCALE

**DIRECTIONS TO LOCATION**

FROM THE INTERSECTION OF ILLINOIS CAMP ROAD (CR 206) AND CURRY COMB ROAD (CR 235) GO SOUTHEAST ON CR 235 3.02 MILES TO INTERSECTION OF CR 246 AND CR 235 TURN LEFT ON CR 235 (CURRY COMB ROAD) GO EAST ON CR 235 ABOUT 6.0 MILES ROAD "Y'S" RIGHT GO SOUTH ABOUT 0.63 MILES TO CALICHE LEASE ROAD ON LEFT GOES TO EXISTING WELLS TO DIAMOND PWU 22 7H & 003H GO EAST 0.12 MILES TO EXISTING PAD SITE IS NORTH OF EXISTING PAD.

**DEVON ENERGY PRODUCTION COMPANY, L.P.  
 DIAMOND PWU 22-11H**

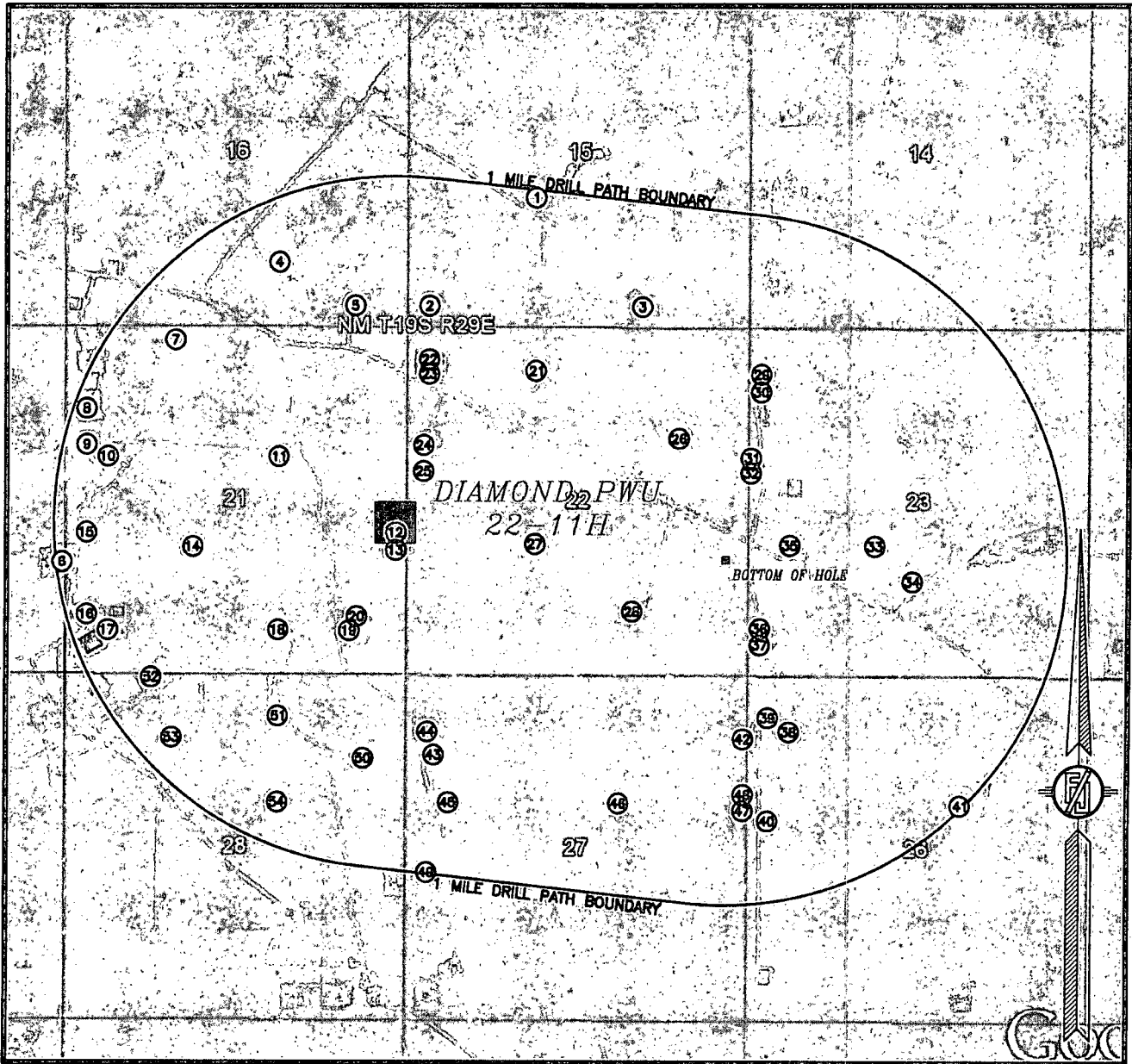
LOCATED 2295 FT. FROM THE SOUTH LINE  
 AND 170 FT. FROM THE EAST LINE OF  
 SECTION 21, TOWNSHIP 19 SOUTH,  
 RANGE 29 EAST, N.M.P.M.  
 EDDY COUNTY, STATE OF NEW MEXICO

OCTOBER 16, 2014

SURVEY NO. 3413

MADRON SURVEYING, INC. 301 SOUTH CANAL (575) 234-3341 CARLSBAD, NEW MEXICO

SECTION 21, TOWNSHIP 19 SOUTH, RANGE 29 EAST, N.M.P.M.  
 EDDY COUNTY, STATE OF NEW MEXICO  
 AERIAL PHOTO



NOT TO SCALE  
 AERIAL PHOTO:  
 GOOGLE EARTH  
 MAY 2014

DEVON ENERGY PRODUCTION COMPANY, L.P.  
 DIAMOND PWU 22-11H  
 LOCATED 2295 FT. FROM THE SOUTH LINE  
 AND 170 FT. FROM THE EAST LINE OF  
 SECTION 21, TOWNSHIP 19 SOUTH,  
 RANGE 29 EAST, N.M.P.M.  
 EDDY COUNTY, STATE OF NEW MEXICO

OCTOBER 16, 2014

SURVEY NO. 3413

MADRON SURVEYING, INC. 301 SOUTH CANAL (575) 234-3341 CARLSBAD, NEW MEXICO

**SECTION 21, TOWNSHIP 19 SOUTH, RANGE 29 EAST, N.M.P.M.  
EDDY COUNTY, STATE OF NEW MEXICO  
WELLS WITHIN 1 MILE DRILL PATH BOUNDARY**

API	Well	Type	ULSTR	Current Operator
1	30-015-22295	PARKWAY STATE COM #001	Gas K-15-19S-29E	[162683] CIMAREX ENERGY CO. OF COLORADO
2	30-015-37376	PARKWAY STATE COM #003	Oil M-15-19S-29E	[162683] CIMAREX ENERGY CO. OF COLORADO
3	30-015-37504	PARKWAY STATE COM #004	Oil O-15-19S-29E	[162683] CIMAREX ENERGY CO. OF COLORADO
4	30-015-22924	STATE 16 A COM #001	Gas O-16-19S-29E	[162683] CIMAREX ENERGY CO. OF COLORADO
5	30-015-37632	MAGNUM 16 STATE #003	Oil P-16-19S-29E	[162683] CIMAREX ENERGY CO. OF COLORADO
6	30-015-40587	EMERALD PWU 20 #007H	Oil I-20-19S-29E	[6137] DEVON ENERGY PRODUCTION COMPANY, LP
7	30-015-38525	PARKWAY 16 STATE COM #003H	Oil C-21-19S-29E	[14744] MEWBOURNE OIL CO
8	30-015-40590	AGATE PWU 21 #005H	Oil D-21-19S-29E	[6137] DEVON ENERGY PRODUCTION COMPANY, LP
9	30-015-38605	AGATE PWU 21 #002H	Oil E-21-19S-29E	[6137] DEVON ENERGY PRODUCTION COMPANY, LP
10	30-015-31295	PARKWAY WEST UNIT #012	Gas E-21-19S-29E	[6137] DEVON ENERGY PRODUCTION COMPANY, LP
11	30-015-23109	PARKWAY WEST UNIT #009	Gas G-21-19S-29E	[6137] DEVON ENERGY PRODUCTION COMPANY, LP
12	30-015-39372	DIAMOND PWU 22 #003H	Oil I-21-19S-29E	[6137] DEVON ENERGY PRODUCTION COMPANY, LP
13	30-015-41007	DIAMOND PWU 22 #007H	Oil I-21-19S-29E	[6137] DEVON ENERGY PRODUCTION COMPANY, LP
14	30-015-32663	PARKWAY #019	Oil K-21-19S-29E	[6137] DEVON ENERGY PRODUCTION COMPANY, LP
15	30-015-39374	AGATE PWU 21 #003H	Oil L-21-19S-29E	[6137] DEVON ENERGY PRODUCTION COMPANY, LP
16	30-015-40134	AGATE PWU 21 #004H	Oil M-21-19S-29E	[6137] DEVON ENERGY PRODUCTION COMPANY, LP
17	30-015-33526	PARKWAY WEST UNIT #024	Gas M-21-19S-29E	[6137] DEVON ENERGY PRODUCTION COMPANY, LP
18	30-015-22979	PARKWAY WEST UNIT #006	Gas O-21-19S-29E	[6137] DEVON ENERGY PRODUCTION COMPANY, LP
19	30-015-40036	DIAMOND PWU 22 #004H	Oil P-21-19S-29E	[6137] DEVON ENERGY PRODUCTION COMPANY, LP
20	30-015-41014	DIAMOND PWU 22 #008H	Oil P-21-19S-29E	[6137] DEVON ENERGY PRODUCTION COMPANY, LP
21	30-015-23006	PARKWAY WEST UNIT #007	Gas C-22-19S-29E	[6137] DEVON ENERGY PRODUCTION COMPANY, LP
22	30-015-38334	DIAMOND PWU 22 #001H	Oil D-22-19S-29E	[6137] DEVON ENERGY PRODUCTION COMPANY, LP
23	30-015-40822	DIAMOND PWU 22 #005H	Oil D-22-19S-29E	[6137] DEVON ENERGY PRODUCTION COMPANY, LP
24	30-015-38475	DIAMOND PWU 22 #002H	Oil E-22-19S-29E	[6137] DEVON ENERGY PRODUCTION COMPANY, LP
25	30-015-41008	DIAMOND PWU 22 #006H	Oil E-22-19S-29E	[6137] DEVON ENERGY PRODUCTION COMPANY, LP
26	30-015-33778	PARKWAY WEST UNIT #022	Gas H-22-19S-29E	[6137] DEVON ENERGY PRODUCTION COMPANY, LP
27	30-015-23033	PARKWAY WEST UNIT #008	Gas K-22-19S-29E	[6137] DEVON ENERGY PRODUCTION COMPANY, LP
28	30-015-33482	PARKWAY WEST UNIT #021	Gas O-22-19S-29E	[6137] DEVON ENERGY PRODUCTION COMPANY, LP
29	30-015-37206	PARKWAY 23 STATE COM #002H	Oil D-23-19S-29E	[7377] EOG RESOURCES INC
30	30-015-39505	PARKWAY 23 STATE COM #005H	Oil D-23-19S-29E	[7377] EOG RESOURCES INC
31	30-015-37207	PARKWAY 23 STATE COM #003H	Oil E-23-19S-29E	[7377] EOG RESOURCES INC
32	30-015-39506	PARKWAY 23 STATE COM #006H	Oil E-23-19S-29E	[7377] EOG RESOURCES INC
33	30-015-22693	STATE 23 #001	Oil J-23-19S-29E	[4378] CHI OPERATING INC
34	30-015-33314	PARKWAY 23 STATE COM #001	Gas K-23-19S-29E	[7377] EOG RESOURCES INC
35	30-015-22814	STATE 23 A #001	Oil L-23-19S-29E	[24010] V-F PETROLEUM INC
36	30-015-37208	PARKWAY 23 STATE #004H	Oil M-23-19S-29E	[7377] EOG RESOURCES INC
37	30-015-39507	PARKWAY 23 STATE #007H	Oil M-23-19S-29E	[7377] EOG RESOURCES INC
38	30-015-36650	PARKWAY 26 STATE COM #001	Gas D-26-19S-29E	[14744] MEWBOURNE OIL CO
39	30-015-37451	PARKWAY 26 STATE COM #002H	Oil D-26-19S-29E	[14744] MEWBOURNE OIL CO
40	30-015-38005	PARKWAY 26 STATE COM #003H	Oil E-26-19S-29E	[14744] MEWBOURNE OIL CO
41	30-015-23943	HALCON STATE #001	Oil G-26-19S-29E	[14744] MEWBOURNE OIL CO
42	30-015-40583	TURQUOISE PWU 27 #005H	Oil A-27-19S-29E	[6137] DEVON ENERGY PRODUCTION COMPANY, LP
43	30-015-40835	PARKWAY WEST SWD #001	Salt Water Disposal D-27-19S-29E	[6137] DEVON ENERGY PRODUCTION COMPANY, LP
44	30-015-38333	TURQUOISE PWU 27 #001H	Oil D-27-19S-29E	[6137] DEVON ENERGY PRODUCTION COMPANY, LP
45	30-015-33447	PARKWAY WEST UNIT #017	Gas E-27-19S-29E	[6137] DEVON ENERGY PRODUCTION COMPANY, LP
46	30-015-23108	PARKWAY WEST UNIT #010	Gas G-27-19S-29E	[6137] DEVON ENERGY PRODUCTION COMPANY, LP
47	30-015-40506	TURQUOISE PWU 27 #002H	Oil H-27-19S-29E	[6137] DEVON ENERGY PRODUCTION COMPANY, LP
48	30-015-40507	TURQUOISE PWU 27 #006H	Oil H-27-19S-29E	[6137] DEVON ENERGY PRODUCTION COMPANY, LP
49	30-015-40501	TURQUOISE PWU 27 #003H	Oil L-27-19S-29E	[6137] DEVON ENERGY PRODUCTION COMPANY, LP
50	30-015-32363	PARKWAY WEST UNIT #015	Gas A-28-19S-29E	[6137] DEVON ENERGY PRODUCTION COMPANY, LP
51	30-015-32184	PARKWAY #014	Gas B-28-19S-29E	[6137] DEVON ENERGY PRODUCTION COMPANY, LP
52	30-015-40217	CORAL PWU 28 #002H	Oil C-28-19S-29E	[6137] DEVON ENERGY PRODUCTION COMPANY, LP
53	30-015-30401	PARKWAY WEST 28 UNIT #004	Gas C-28-19S-29E	[6137] DEVON ENERGY PRODUCTION COMPANY, LP
54	30-015-32685	PARKWAY #020	Oil G-28-19S-29E	[6137] DEVON ENERGY PRODUCTION COMPANY, LP

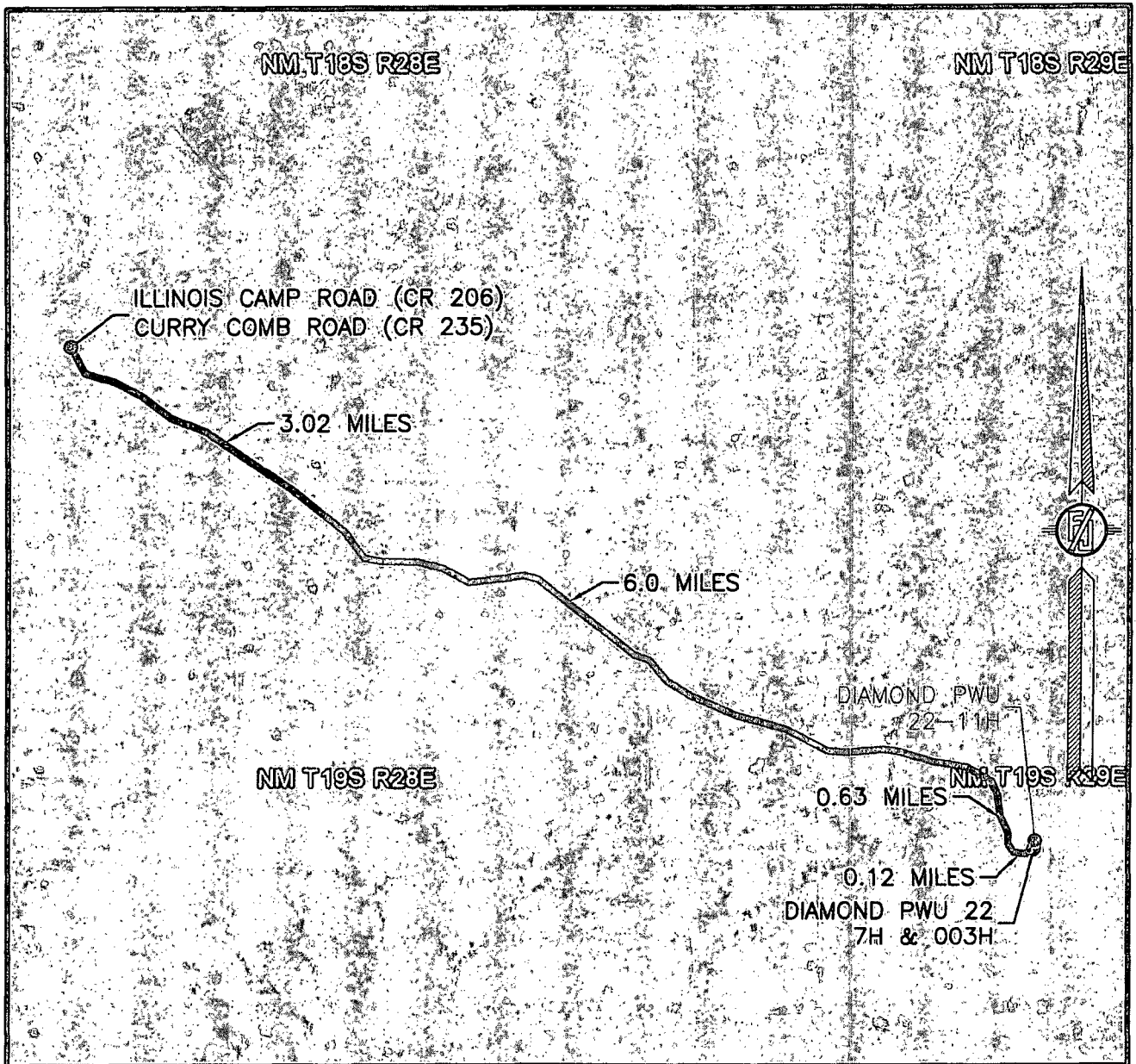
**DEVON ENERGY PRODUCTION COMPANY, L.P.  
DIAMOND PWU 22-11H  
LOCATED 2295 FT. FROM THE SOUTH LINE  
AND 170 FT. FROM THE EAST LINE OF  
SECTION 21, TOWNSHIP 19 SOUTH,  
RANGE 29 EAST, N.M.P.M.  
EDDY COUNTY, STATE OF NEW MEXICO**

OCTOBER 16, 2014

SURVEY NO. 3413

MADRON SURVEYING, INC. 301 SOUTH CANAL CARLSBAD, NEW MEXICO  
(575) 234-3341

SECTION 21, TOWNSHIP 19 SOUTH, RANGE 29 EAST, N.M.P.M.  
 EDDY COUNTY, STATE OF NEW MEXICO  
 AERIAL ACCESS ROUTE MAP



NOT TO SCALE  
 AERIAL PHOTO:  
 GOOGLE EARTH  
 MAY 2014

DEVON ENERGY PRODUCTION COMPANY, L.P.  
 DIAMOND PWU 22-11H  
 LOCATED 2295 FT. FROM THE SOUTH LINE  
 AND 170 FT. FROM THE EAST LINE OF  
 SECTION 21, TOWNSHIP 19 SOUTH,  
 RANGE 29 EAST, N.M.P.M.  
 EDDY COUNTY, STATE OF NEW MEXICO

OCTOBER 16, 2014

SURVEY NO. 3413

MADRON SURVEYING, INC. 301 SOUTH CANAL (575) 234-3341 CARLSBAD, NEW MEXICO

**Devon Energy, Diamond PWU 22-11H**

**1. Geologic Formations**

TVD of target	9,060'	Pilot hole depth	N/A
MD at TD:	13,965'	Deepest expected fresh water:	

**Basin**

<b>Formation</b>	<b>Depth (TVD) from KB</b>	<b>Water/Mineral Bearing/ Target Zone?</b>	<b>Hazards*</b>
Rustler	Surface	Barren	
Salt	350	Barren	
Tansil	1,240	Barren	
Yates	1,385	Barren	
Queen	2,300	Oil	
Grayburg	2,685	Oil	
Delaware	3,510	Oil	
Bone Spring Lime	5,130	Oil	
2 <sup>nd</sup> Bone Spring Lime	7,090	Oil	
3 <sup>rd</sup> Bone Spring Lime	8,015	Oil	
3 <sup>rd</sup> Bone Spring Sand	8,610	Oil	

\*H2S, water flows, loss of circulation, abnormal pressures, etc.



**Devon Energy, Diamond PWU 22-11H**

**2. Casing Program**

Hole Size	Casing Interval		Csg. Size	Weight (lbs)	Grade	Conn	SF Collapse	SF Burst	SF Tension
	From	To							
17.5"	0	200'	13.375"	48	H-40	STC	8.61	19.34	56.35
12.25"	0	3,400'	9.625"	36	J-55	LTC	1.143	1.99	3.70
8.75"	0	8,400'	7"	29	HCP-110	BTC	2.065	2.52	3.92
8.75"	8,400'	13,965'	5.5"	17	P-110	BTC	1.79	2.21	3.69
BLM Minimum Safety Factor							1.125	1.00	1.6 Dry 1.8 Wet

All casing strings will be tested in accordance with Onshore Oil and Gas Order #2 III.B.1.h

Must have table for contingency casing

	Y or N
Is casing new? If used, attach certification as required in Onshore Order #1	Y
Does casing meet API specifications? If no, attach casing specification sheet.	Y
Is premium or uncommon casing planned? If yes attach casing specification sheet.	N
Does the above casing design meet or exceed BLM's minimum standards? If not provide justification (loading assumptions, casing design criteria).	Y
Will the intermediate pipe be kept at a minimum 1/3 fluid filled to avoid approaching the collapse pressure rating of the casing?	Y
Is well located within Capitan Reef?	N
If yes, does production casing cement tie back a minimum of 50' above the Reef?	
Is well within the designated 4 string boundary.	
Is well located in SOPA but not in R-111-P?	N
If yes, are the first 2 strings cemented to surface and 3 <sup>rd</sup> string cement tied back 500' into previous casing?	
Is well located in R-111-P and SOPA?	N
If yes, are the first three strings cemented to surface?	
Is 2 <sup>nd</sup> string set 100' to 600' below the base of salt?	
Is well located in high Cave/Karst?	N
If yes, are there two strings cemented to surface?	
(For 2 string wells) If yes, is there a contingency casing if lost circulation occurs?	
Is well located in critical Cave/Karst?	N
If yes, are there three strings cemented to surface?	

**Devon Energy, Diamond PWU 22-11H**

**3. Cementing Program**

Casing	# Sks	Wt. lb/gal	H <sub>2</sub> O gal/sk	Yld ft <sup>3</sup> /sack	500# Comp. Strength (hours)	Slurry Description
Surf.	240	14.8	6.34	1.34	6	Tail: Class C Cement + 0.125 lbs/sack Poly-E-Flake + 1% BWOC Calcium Chloride
Inter.	700	12.9	9.81	1.85	15	Lead: (65:35) Class C Cement: Poz (Fly Ash): 6% BWOC Bentonite + 5% BWOW Sodium Chloride + 0.125 lbs/sack Poly-E-Flake
	430	14.8	1.33	6.32	7	Tail: Class C Cement + 0.125 lbs/sack Poly-E-Flake
7 x 5.5" Combo Prod	360	10.4	16.8	3.17	25	Lead: Tuned Light <sup>®</sup> Cement + 0.125 lb/sk Pol-E-Flake
	1450	14.5	5.31	1.2	25	Tail: (50:50) Class H Cement: Poz (Fly Ash) + 0.5% bwoc HALAD-344 + 0.4% bwoc CFR-3 + 0.2% BWOC HR-601 + 2% bwoc Bentonite

DV tool depth(s) will be adjusted based on hole conditions and cement volumes will be adjusted proportionally. DV tool will be set a minimum of 50 feet below previous casing and a minimum of 200 feet above current shoe. Lab reports with the 500 psi compressive strength time for the cement will be onsite for review.

Casing String	TOC	% Excess
Surface	0'	100%
Intermediate	0'	75%
7 x 5.5" Combo Prod.	2400'	25%

**Devon Energy, Diamond PWU 22-11H**

**4. Pressure Control Equipment**

N	A variance is requested for the use of a diverter on the surface casing. See attached for schematic.
---	--

BOP installed and tested before drilling which hole?	Size?	Min. Required WP	Type	✓	Tested to:
12-1/4"	13-5/8"	3M	Annular	x	50% of working pressure
			Blind Ram		
			Pipe Ram		
			Double Ram	x	
			Other*		
8-3/4"	13-5/8"	5M	Annular	x	50% testing pressure
			Blind Ram		
			Pipe Ram		
			Double Ram	x	
			Other*		
			Annular		
			Blind Ram		
			Pipe Ram		
			Double Ram		
			Other*		

\*Specify if additional ram is utilized.

BOP/BOPE will be tested by an independent service company to 250 psi low and the high pressure indicated above per Onshore Order 2 requirements. The System may be upgraded to a higher pressure but still tested to the working pressure listed in the table above. If the system is upgraded all the components installed will be functional and tested.

Pipe rams will be operationally checked each 24 hour period. Blind rams will be operationally checked on each trip out of the hole. These checks will be noted on the daily tour sheets. Other accessories to the BOP equipment will include a Kelly cock and floor safety valve (inside BOP) and choke lines and choke manifold. See attached schematics.

Y	Formation integrity test will be performed per Onshore Order #2. On Exploratory wells or on that portion of any well approved for a 5M BOPE system or greater, a pressure integrity test of each casing shoe shall be performed. Will be tested in accordance with Onshore Oil and Gas Order #2 III.B.1.i.
---	--

**Devon Energy, Diamond PWU 22-11H**

Y	A variance is requested for the use of a flexible choke line from the BOP to Choke Manifold. See attached for specs and hydrostatic test chart.
Y	Are anchors required by manufacturer?
Y	<p>A multibowl wellhead is being used. The BOP will be tested per Onshore Order #2 after installation on the surface casing which will cover testing requirements for a maximum of 30 days. If any seal subject to test pressure is broken the system must be tested.</p> <p>Devon proposes using a multi-bowl wellhead assembly (FMC Uni-head). This assembly will only be tested when installed on the surface casing. Minimum working pressure of the blowout preventer (BOP) and related equipment (BOPE) required for drilling below the surface casing shoe shall be 3000 (3M) psi.</p> <ul style="list-style-type: none"> <li>• Wellhead will be installed by FMC's representatives.</li> <li>• If the welding is performed by a third party, the FMC's representative will monitor the temperature to verify that it does not exceed the maximum temperature of the seal.</li> <li>• FMC representative will install the test plug for the initial BOP test.</li> <li>• FMC will install a solid steel body pack-off to completely isolate the lower head after cementing intermediate casing. After installation of the pack-off, the pack-off and the lower flange will be tested to 5M, as shown on the attached schematic. Everything above the pack-off will not have been altered whatsoever from the initial nipple up. Therefore the BOP components will not be retested at that time.</li> <li>• If the cement does not circulate and one inch operations would have been possible with a standard wellhead, the well head will be cut and top out operations will be conducted.</li> <li>• Devon will pressure test all seals above and below the mandrel (but still above the casing) to full working pressure rating.</li> <li>• Devon will test the casing to 0.22 psi/ft or 1500 psi, whichever is greater, as per Onshore Order #2.</li> </ul> <p>After running the 13-3/8" surface casing, a 13-5/8" BOP/BOPE system with a minimum rating of 3M will be installed on the FMC Uni-head wellhead system and will undergo a 250 psi low pressure test followed by a 3,000 psi high pressure test. The 3,000 psi high and 250 psi low test will cover testing requirements a maximum of 30 days, as per Onshore Order #2. If the well is not complete within 30 days of this BOP test, another full BOP test will be conducted, as per Onshore Order #2.</p> <p>After running the 9-5/8' intermediate casing with a mandrel hanger, the 13-5/8" BOP/BOPE system with a minimum rating of 3M will already be installed on the FMC Uni-head.</p> <p>The pipe rams will be operated and checked each 24 hour period and each time the drill pipe is out of the hole. These tests will be logged in the daily driller's log. A 2" kill line and 3" choke line will be incorporated into the drilling spool below the ram BOP. In addition to the rams and annular preventer, additional BOP accessories include a kelly cock, floor safety valve, choke lines, and choke manifold rated at 3,000 psi WP.</p>

**Devon Energy, Diamond PWU 22-11H**

<p>Devon requests a variance to use a flexible line with flanged ends between the BOP and the choke manifold (choke line). The line will be kept as straight as possible with minimal turns</p> <p>See attached schematic.</p>
--

**5. Mud Program**

Depth		Type	Weight (ppg)	Viscosity	Water Loss
From	To				
0	200'	FW Gel	8.6-8.8	28-34	N/C
200'	3,400'	Saturated Brine	10.0-10.2	28-34	N/C
3,400'	13,965'	Cut Brine	8.5-9.3	28-34	N/C

Sufficient mud materials to maintain mud properties and meet minimum lost circulation and weight increase requirements will be kept on location at all times.

What will be used to monitor the loss or gain of fluid?	PVT/Pason/Visual Monitoring
---	-----------------------------

**6. Logging and Testing Procedures**

Logging, Coring and Testing	
x	Will run GR/CNL from TD to surface (horizontal well – vertical portion of hole). Stated logs run will be in the Completion Report and submitted to the BLM.
	No Logs are planned based on well control or offset log information.
	Drill stem test? If yes, explain
	Coring? If yes, explain

Additional logs planned	Interval
Resistivity	Int. shoe to KOP
Density	Int. shoe to KOP
X CBL	Production casing
X Mud log	Intermediate shoe to TD
PEX	

**Devon Energy, Diamond PWU 22-11H**

**7. Drilling Conditions**

<b>Condition</b>	<b>Specify what type and where?</b>
BH Pressure at deepest TVD	4530 psi
Abnormal Temperature	No

Mitigation measure for abnormal conditions. Describe. Lost circulation material/sweeps/mud scavengers.

Hydrogen Sulfide (H2S) monitors will be installed prior to drilling out the surface shoe. If H2S is detected in concentrations greater than 100 ppm, the operator will comply with the provisions of Onshore Oil and Gas Order #6. If Hydrogen Sulfide is encountered, measured values and formations will be provided to the BLM.	
N	H2S is present
Y	H2S Plan attached

**8. Other facets of operation**

Is this a walking operation? No.

Will be pre-setting casing? No.

Attachments

Directional Plan

Other, describe

# DEVON ENERGY

Project: Eddy County, NM (NAD-83)  
 Site: Diamond PWU 22  
 Well: 11H  
 Wellbore: OH  
 Design: Plan #1

**NM OIL CONSERVATION**  
 ARTESIA DISTRICT  
 NOV 25 2014

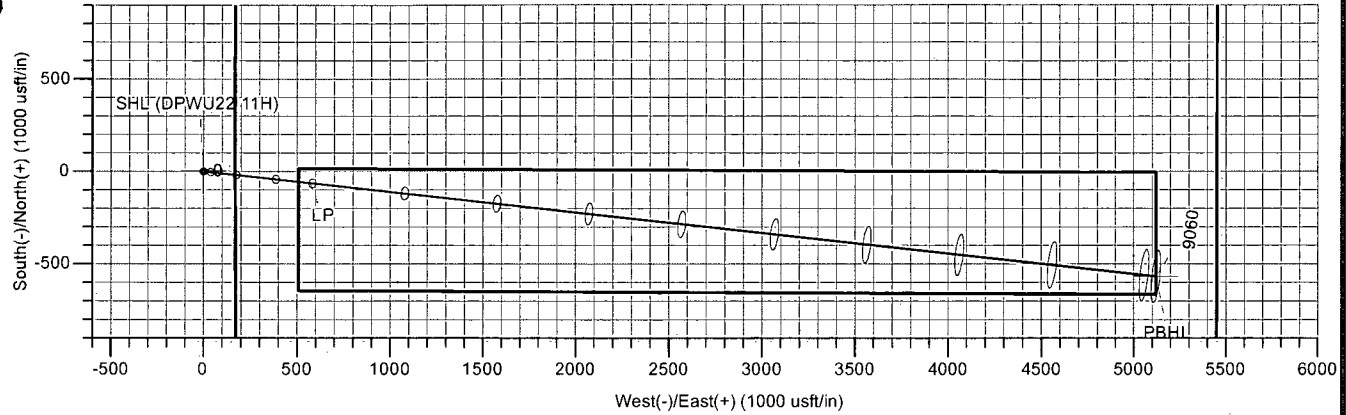
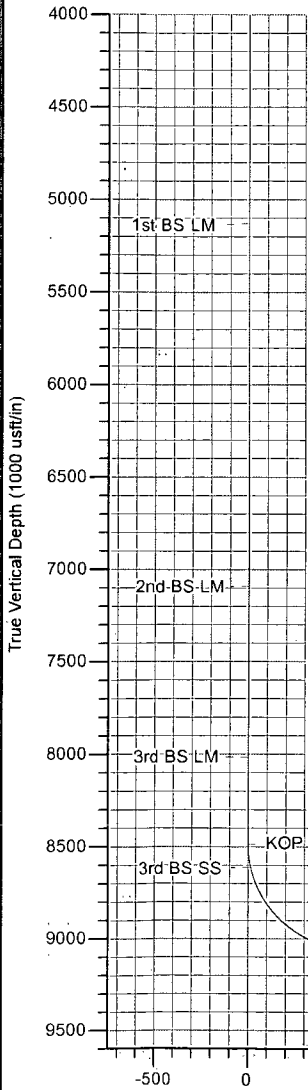


Azimuths to Grid North  
 True North: -0.14°  
 Magnetic North: 7.46°

Magnetic Field  
 Strength: 48425.7snT  
 Dip Angle: 60.40°  
 Date: 11/12/2014  
 Model: BGGM2014



RECEIVED

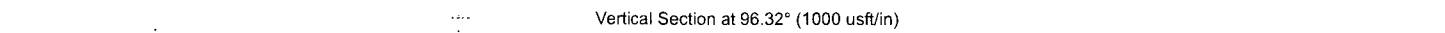


DESIGN TARGET DETAILS

Name	TVD	+N/-S	+E/-W	Northing	Easting	Latitude	Longitude
SHL (DPWU22 11H)	0.00	0.00	0.00	598606.06	621834.50	32° 38' 43.237 N	104° 4' 18.507 W
PBHL (DPWU22 11H)	9060.00	-567.28	5120.05	598038.78	626954.55	32° 38' 37.495 N	104° 3' 18.641 W

SECTION DETAILS

Sec	MD	Inc	Azi	TVD	+N/-S	+E/-W	Dleg	TFace	VFace	Annotation
1	0.00	0.00	0.00	0.00	0.00	0.00	0.00	0.00	0.00	
2	8487.04	0.00	0.00	8487.04	0.00	0.00	0.00	0.00	0.00	KOP 10° DLS
3	9387.04	90.00	96.32	9060.00	-63.10	569.47	10.00	96.32	572.96	LP
4	13965.46	90.00	96.32	9060.00	-567.28	5120.05	0.00	0.00	5151.38	TD



LEAM DRILLING SYSTEMS LLC  
 2010 East Davis, Conroe, Texas 77301  
 Phone: 936/756-7577, Fax 936/756-7595

Plan: Plan #1 (11H/OH)  
 Diamond PWU 22  
 Created By: Brady Deaver Date: 9:27, November 12 2014  
 Date: \_\_\_\_\_  
 Approved: \_\_\_\_\_ Date: \_\_\_\_\_

NM OIL CONSERVATION

ARTESIA DISTRICT

NOV 25 2014

RECEIVED



**LEAM**

*Drilling Systems, Inc.*

## DEVON ENERGY

Eddy County, NM (NAD-83)

Diamond PWU 22

11H

OH

Plan: Plan #1

## Standard Planning Report

12 November, 2014

  
devon



Database:	EDM 5000.1 Single User Db	Local Co-ordinate Reference:	Well 11H
Company:	DEVON ENERGY	TVD Reference:	3332.1' GL + 25' GL @ 3357.10usft (Original Well Elev)
Project:	Eddy County, NM (NAD:83)	MD Reference:	3332.1' GL + 25' GL @ 3357.10usft (Original Well Elev)
Site:	Diamond PWU 22	North Reference:	Grid
Well:	11H	Survey Calculation Method:	Minimum Curvature
Wellbore:	OH		
Design:	Plan #1		

Project	Eddy County, NM (NAD:83)		
Map System:	US State Plane 1983	System Datum:	Mean Sea Level
Geo Datum:	North American Datum 1983		
Map Zone:	New Mexico Eastern Zone		

Site	Diamond PWU 22				
Site Position:		Northing:	597,134.81 usft	Latitude:	32° 38' 28.693 N
From:	Map	Easting:	621,230.10 usft	Longitude:	104° 4' 25.619 W
Position Uncertainty:	0.00 usft	Slot Radius:	13-3/16 "	Grid Convergence:	0.14 °

Well	11H, 3rd BS, SS					
Well Position	+N/-S	1,471.25 usft	Northing:	598,606.06 usft	Latitude:	32° 38' 43.237 N
	+E/-W	604.40 usft	Easting:	621,834.50 usft	Longitude:	104° 4' 18.507 W
Position Uncertainty		0.00 usft	Wellhead Elevation:	0.00 usft	Ground Level:	3,332.10 usft

Wellbore	OH				
Magnetics	Model Name	Sample Date	Declination (°)	Dip Angle (°)	Field Strength (nT)
	BGGM2014	11/12/2014	7.60	60.40	48,426

Design	Plan #1			
Audit Notes:				
Version:	Phase:	PLAN	Tie On Depth:	0.00
Vertical Section:	Depth From (TVD) (usft)	+N/-S (usft)	+E/-W (usft)	Direction (°)
	0.00	0.00	0.00	96.32

Plan Sections											
Measured Depth (usft)	Inclination (°)	Azimuth (°)	Vertical Depth (usft)	+N/-S (usft)	+E/-W (usft)	Dogleg Rate (°/100usft)	Build Rate (°/100usft)	Turn Rate (°/100usft)	TFO (°)	Target	
0.00	0.00	0.00	0.00	0.00	0.00	0.00	0.00	0.00	0.00		
8,487.04	0.00	0.00	8,487.04	0.00	0.00	0.00	0.00	0.00	0.00		
9,387.04	90.00	96.32	9,060.00	-63.10	569.47	10.00	10.00	0.00	96.32		
13,965.46	90.00	96.32	9,060.00	-567.28	5,120.05	0.00	0.00	0.00	0.00	0.00 - PBHL (DPWU22 11H)	



Database:	EDM 5000.1 Single User Db	Local Co-ordinate Reference:	Well 11H
Company:	DEVON ENERGY	TVD Reference:	3332.1' GL + 25' GL @ 3357.10usft (Original Well Elev)
Project:	Eddy County, NM (NAD-83)	MD Reference:	3332.1' GL + 25' GL @ 3357.10usft (Original Well Elev)
Site:	Diamond PWU 22	North Reference:	Grid
Well:	11H	Survey Calculation Method:	Minimum Curvature
Wellbore:	OH		
Design:	Plan #1		

Planned Survey										
Measured Depth (usft)	Inclination (°)	Azimuth (°)	Vertical Depth (usft)	+N/-S (usft)	+E/-W (usft)	Vertical Section (usft)	Dogleg Rate (°/100usft)	Build Rate (°/100usft)	Turn Rate (°/100usft)	
0.00	0.00	0.00	0.00	0.00	0.00	0.00	0.00	0.00	0.00	0.00
<b>SHL (DPWU22 11H)</b>										
100.00	0.00	0.00	100.00	0.00	0.00	0.00	0.00	0.00	0.00	0.00
200.00	0.00	0.00	200.00	0.00	0.00	0.00	0.00	0.00	0.00	0.00
300.00	0.00	0.00	300.00	0.00	0.00	0.00	0.00	0.00	0.00	0.00
350.00	0.00	0.00	350.00	0.00	0.00	0.00	0.00	0.00	0.00	0.00
<b>Salt</b>										
400.00	0.00	0.00	400.00	0.00	0.00	0.00	0.00	0.00	0.00	0.00
500.00	0.00	0.00	500.00	0.00	0.00	0.00	0.00	0.00	0.00	0.00
600.00	0.00	0.00	600.00	0.00	0.00	0.00	0.00	0.00	0.00	0.00
700.00	0.00	0.00	700.00	0.00	0.00	0.00	0.00	0.00	0.00	0.00
800.00	0.00	0.00	800.00	0.00	0.00	0.00	0.00	0.00	0.00	0.00
900.00	0.00	0.00	900.00	0.00	0.00	0.00	0.00	0.00	0.00	0.00
1,000.00	0.00	0.00	1,000.00	0.00	0.00	0.00	0.00	0.00	0.00	0.00
1,100.00	0.00	0.00	1,100.00	0.00	0.00	0.00	0.00	0.00	0.00	0.00
1,200.00	0.00	0.00	1,200.00	0.00	0.00	0.00	0.00	0.00	0.00	0.00
1,240.00	0.00	0.00	1,240.00	0.00	0.00	0.00	0.00	0.00	0.00	0.00
<b>Tansil</b>										
1,300.00	0.00	0.00	1,300.00	0.00	0.00	0.00	0.00	0.00	0.00	0.00
1,385.00	0.00	0.00	1,385.00	0.00	0.00	0.00	0.00	0.00	0.00	0.00
<b>Yates</b>										
1,400.00	0.00	0.00	1,400.00	0.00	0.00	0.00	0.00	0.00	0.00	0.00
1,500.00	0.00	0.00	1,500.00	0.00	0.00	0.00	0.00	0.00	0.00	0.00
1,600.00	0.00	0.00	1,600.00	0.00	0.00	0.00	0.00	0.00	0.00	0.00
1,700.00	0.00	0.00	1,700.00	0.00	0.00	0.00	0.00	0.00	0.00	0.00
1,800.00	0.00	0.00	1,800.00	0.00	0.00	0.00	0.00	0.00	0.00	0.00
1,900.00	0.00	0.00	1,900.00	0.00	0.00	0.00	0.00	0.00	0.00	0.00
2,000.00	0.00	0.00	2,000.00	0.00	0.00	0.00	0.00	0.00	0.00	0.00
2,100.00	0.00	0.00	2,100.00	0.00	0.00	0.00	0.00	0.00	0.00	0.00
2,200.00	0.00	0.00	2,200.00	0.00	0.00	0.00	0.00	0.00	0.00	0.00
2,300.00	0.00	0.00	2,300.00	0.00	0.00	0.00	0.00	0.00	0.00	0.00
<b>Queen</b>										
2,400.00	0.00	0.00	2,400.00	0.00	0.00	0.00	0.00	0.00	0.00	0.00
2,500.00	0.00	0.00	2,500.00	0.00	0.00	0.00	0.00	0.00	0.00	0.00
2,600.00	0.00	0.00	2,600.00	0.00	0.00	0.00	0.00	0.00	0.00	0.00
2,685.00	0.00	0.00	2,685.00	0.00	0.00	0.00	0.00	0.00	0.00	0.00
<b>Grayburg</b>										
2,700.00	0.00	0.00	2,700.00	0.00	0.00	0.00	0.00	0.00	0.00	0.00
2,800.00	0.00	0.00	2,800.00	0.00	0.00	0.00	0.00	0.00	0.00	0.00
2,900.00	0.00	0.00	2,900.00	0.00	0.00	0.00	0.00	0.00	0.00	0.00
3,000.00	0.00	0.00	3,000.00	0.00	0.00	0.00	0.00	0.00	0.00	0.00
3,100.00	0.00	0.00	3,100.00	0.00	0.00	0.00	0.00	0.00	0.00	0.00
3,200.00	0.00	0.00	3,200.00	0.00	0.00	0.00	0.00	0.00	0.00	0.00
3,300.00	0.00	0.00	3,300.00	0.00	0.00	0.00	0.00	0.00	0.00	0.00
3,400.00	0.00	0.00	3,400.00	0.00	0.00	0.00	0.00	0.00	0.00	0.00
3,500.00	0.00	0.00	3,500.00	0.00	0.00	0.00	0.00	0.00	0.00	0.00
3,510.00	0.00	0.00	3,510.00	0.00	0.00	0.00	0.00	0.00	0.00	0.00
<b>Delaware</b>										
3,600.00	0.00	0.00	3,600.00	0.00	0.00	0.00	0.00	0.00	0.00	0.00
3,700.00	0.00	0.00	3,700.00	0.00	0.00	0.00	0.00	0.00	0.00	0.00
3,800.00	0.00	0.00	3,800.00	0.00	0.00	0.00	0.00	0.00	0.00	0.00
3,900.00	0.00	0.00	3,900.00	0.00	0.00	0.00	0.00	0.00	0.00	0.00



Database:	EDM 5000.1.Single User Db	Local Co-ordinate Reference:	Well 11H
Company:	DEVON ENERGY	TVD Reference:	3332.1' GL + 25' GL @ 3357.10usft (Original Well Elev)
Project:	Eddy County, NM (NAD-83)	MD Reference:	3332.1' GL + 25' GL @ 3357.10usft (Original Well Elev)
Site:	Diamond PWU 22	North Reference:	Grid
Well:	11H	Survey Calculation Method:	Minimum Curvature
Wellbore:	OH		
Design:	Plan #1		

**Planned Survey**

Measured Depth (usft)	Inclination (°)	Azimuth (°)	Vertical Depth (usft)	+N/S (usft)	+E/W (usft)	Vertical Section (usft)	Dogleg Rate (°/100usft)	Build Rate (°/100usft)	Turn Rate (°/100usft)
4,000.00	0.00	0.00	4,000.00	0.00	0.00	0.00	0.00	0.00	0.00
4,100.00	0.00	0.00	4,100.00	0.00	0.00	0.00	0.00	0.00	0.00
4,200.00	0.00	0.00	4,200.00	0.00	0.00	0.00	0.00	0.00	0.00
4,300.00	0.00	0.00	4,300.00	0.00	0.00	0.00	0.00	0.00	0.00
4,400.00	0.00	0.00	4,400.00	0.00	0.00	0.00	0.00	0.00	0.00
4,500.00	0.00	0.00	4,500.00	0.00	0.00	0.00	0.00	0.00	0.00
4,600.00	0.00	0.00	4,600.00	0.00	0.00	0.00	0.00	0.00	0.00
4,700.00	0.00	0.00	4,700.00	0.00	0.00	0.00	0.00	0.00	0.00
4,800.00	0.00	0.00	4,800.00	0.00	0.00	0.00	0.00	0.00	0.00
4,900.00	0.00	0.00	4,900.00	0.00	0.00	0.00	0.00	0.00	0.00
5,000.00	0.00	0.00	5,000.00	0.00	0.00	0.00	0.00	0.00	0.00
5,100.00	0.00	0.00	5,100.00	0.00	0.00	0.00	0.00	0.00	0.00
5,130.00	0.00	0.00	5,130.00	0.00	0.00	0.00	0.00	0.00	0.00
<b>1st BS LM</b>									
5,200.00	0.00	0.00	5,200.00	0.00	0.00	0.00	0.00	0.00	0.00
5,300.00	0.00	0.00	5,300.00	0.00	0.00	0.00	0.00	0.00	0.00
5,400.00	0.00	0.00	5,400.00	0.00	0.00	0.00	0.00	0.00	0.00
5,500.00	0.00	0.00	5,500.00	0.00	0.00	0.00	0.00	0.00	0.00
5,600.00	0.00	0.00	5,600.00	0.00	0.00	0.00	0.00	0.00	0.00
5,700.00	0.00	0.00	5,700.00	0.00	0.00	0.00	0.00	0.00	0.00
5,800.00	0.00	0.00	5,800.00	0.00	0.00	0.00	0.00	0.00	0.00
5,900.00	0.00	0.00	5,900.00	0.00	0.00	0.00	0.00	0.00	0.00
6,000.00	0.00	0.00	6,000.00	0.00	0.00	0.00	0.00	0.00	0.00
6,100.00	0.00	0.00	6,100.00	0.00	0.00	0.00	0.00	0.00	0.00
6,200.00	0.00	0.00	6,200.00	0.00	0.00	0.00	0.00	0.00	0.00
6,300.00	0.00	0.00	6,300.00	0.00	0.00	0.00	0.00	0.00	0.00
6,400.00	0.00	0.00	6,400.00	0.00	0.00	0.00	0.00	0.00	0.00
6,500.00	0.00	0.00	6,500.00	0.00	0.00	0.00	0.00	0.00	0.00
6,600.00	0.00	0.00	6,600.00	0.00	0.00	0.00	0.00	0.00	0.00
6,700.00	0.00	0.00	6,700.00	0.00	0.00	0.00	0.00	0.00	0.00
6,800.00	0.00	0.00	6,800.00	0.00	0.00	0.00	0.00	0.00	0.00
6,900.00	0.00	0.00	6,900.00	0.00	0.00	0.00	0.00	0.00	0.00
7,000.00	0.00	0.00	7,000.00	0.00	0.00	0.00	0.00	0.00	0.00
7,090.00	0.00	0.00	7,090.00	0.00	0.00	0.00	0.00	0.00	0.00
<b>2nd BS LM</b>									
7,100.00	0.00	0.00	7,100.00	0.00	0.00	0.00	0.00	0.00	0.00
7,200.00	0.00	0.00	7,200.00	0.00	0.00	0.00	0.00	0.00	0.00
7,300.00	0.00	0.00	7,300.00	0.00	0.00	0.00	0.00	0.00	0.00
7,400.00	0.00	0.00	7,400.00	0.00	0.00	0.00	0.00	0.00	0.00
7,500.00	0.00	0.00	7,500.00	0.00	0.00	0.00	0.00	0.00	0.00
7,600.00	0.00	0.00	7,600.00	0.00	0.00	0.00	0.00	0.00	0.00
7,700.00	0.00	0.00	7,700.00	0.00	0.00	0.00	0.00	0.00	0.00
7,800.00	0.00	0.00	7,800.00	0.00	0.00	0.00	0.00	0.00	0.00
7,900.00	0.00	0.00	7,900.00	0.00	0.00	0.00	0.00	0.00	0.00
8,000.00	0.00	0.00	8,000.00	0.00	0.00	0.00	0.00	0.00	0.00
8,015.00	0.00	0.00	8,015.00	0.00	0.00	0.00	0.00	0.00	0.00
<b>3rd BS LM</b>									
8,100.00	0.00	0.00	8,100.00	0.00	0.00	0.00	0.00	0.00	0.00
8,200.00	0.00	0.00	8,200.00	0.00	0.00	0.00	0.00	0.00	0.00
8,300.00	0.00	0.00	8,300.00	0.00	0.00	0.00	0.00	0.00	0.00
8,400.00	0.00	0.00	8,400.00	0.00	0.00	0.00	0.00	0.00	0.00

Database:	EDM 5000.1 Single User Db	Local Co-ordinate Reference:	Well 11H
Company:	DEVON ENERGY	TVD Reference:	3332.1' GL + 25' GL @ 3357.10usft (Original Well Elev)
Project:	Eddy County, NM (NAD-83)	MD Reference:	3332.1' GL + 25' GL @ 3357.10usft (Original Well Elev)
Site:	Diamond, PWU 22	North Reference:	Grid
Well:	11H	Survey Calculation Method:	Minimum Curvature
Wellbore:	OH		
Design:	Plan #1		

**Planned Survey**

Measured Depth (usft)	Inclination (°)	Azimuth (°)	Vertical Depth (usft)	+N/S (usft)	+E/W (usft)	Vertical Section (usft)	Dogleg Rate (%/100usft)	Build Rate (%/100usft)	Turn Rate (%/100usft)	
8,487.04	0.00	0.00	8,487.04	0.00	0.00	0.00	0.00	0.00	0.00	
<b>KOP 10° DLS</b>										
8,500.00	1.30	96.32	8,500.00	-0.02	0.15	0.15	10.00	10.00	0.00	
8,550.00	6.30	96.32	8,549.87	-0.38	3.43	3.46	10.00	10.00	0.00	
8,600.00	11.30	96.32	8,599.27	-1.22	11.03	11.10	10.00	10.00	0.00	
8,610.96	12.39	96.32	8,610.00	-1.47	13.27	13.35	10.00	10.00	0.00	
<b>3rd BS SS</b>										
8,650.00	16.30	96.32	8,647.81	-2.53	22.88	23.02	10.00	10.00	0.00	
8,700.00	21.30	96.32	8,695.13	-4.31	38.88	39.12	10.00	10.00	0.00	
8,750.00	26.30	96.32	8,740.87	-6.53	58.93	59.29	10.00	10.00	0.00	
8,800.00	31.30	96.32	8,784.67	-9.18	82.86	83.37	10.00	10.00	0.00	
8,850.00	36.30	96.32	8,826.21	-12.24	110.49	111.17	10.00	10.00	0.00	
8,900.00	41.30	96.32	8,865.16	-15.69	141.62	142.49	10.00	10.00	0.00	
8,950.00	46.30	96.32	8,901.24	-19.50	176.00	177.08	10.00	10.00	0.00	
9,000.00	51.30	96.32	8,934.17	-23.64	213.38	214.69	10.00	10.00	0.00	
9,050.00	56.30	96.32	8,963.69	-28.08	253.47	255.02	10.00	10.00	0.00	
9,100.00	61.30	96.32	8,989.59	-32.79	295.96	297.77	10.00	10.00	0.00	
9,150.00	66.30	96.32	9,011.66	-37.73	340.54	342.62	10.00	10.00	0.00	
9,200.00	71.30	96.32	9,029.74	-42.86	386.85	389.22	10.00	10.00	0.00	
9,250.00	76.30	96.32	9,043.69	-48.15	434.56	437.22	10.00	10.00	0.00	
9,300.00	81.30	96.32	9,053.40	-53.55	483.29	486.25	10.00	10.00	0.00	
9,350.00	86.30	96.32	9,058.80	-59.02	532.68	535.94	10.00	10.00	0.00	
9,387.04	90.00	96.32	9,060.00	-63.10	569.47	572.96	10.00	10.00	0.00	
<b>LP</b>										
9,400.00	90.00	96.32	9,060.00	-64.52	582.35	585.92	0.00	0.00	0.00	
9,500.00	90.00	96.32	9,060.00	-75.53	681.74	685.92	0.00	0.00	0.00	
9,600.00	90.00	96.32	9,060.00	-86.55	781.14	785.92	0.00	0.00	0.00	
9,700.00	90.00	96.32	9,060.00	-97.56	880.53	885.92	0.00	0.00	0.00	
9,800.00	90.00	96.32	9,060.00	-108.57	979.92	985.92	0.00	0.00	0.00	
9,900.00	90.00	96.32	9,060.00	-119.58	1,079.31	1,085.92	0.00	0.00	0.00	
10,000.00	90.00	96.32	9,060.00	-130.60	1,178.70	1,185.92	0.00	0.00	0.00	
10,100.00	90.00	96.32	9,060.00	-141.61	1,278.09	1,285.92	0.00	0.00	0.00	
10,200.00	90.00	96.32	9,060.00	-152.62	1,377.49	1,385.92	0.00	0.00	0.00	
10,300.00	90.00	96.32	9,060.00	-163.63	1,476.88	1,485.92	0.00	0.00	0.00	
10,400.00	90.00	96.32	9,060.00	-174.64	1,576.27	1,585.92	0.00	0.00	0.00	
10,500.00	90.00	96.32	9,060.00	-185.66	1,675.66	1,685.92	0.00	0.00	0.00	
10,600.00	90.00	96.32	9,060.00	-196.67	1,775.05	1,785.92	0.00	0.00	0.00	
10,700.00	90.00	96.32	9,060.00	-207.68	1,874.45	1,885.92	0.00	0.00	0.00	
10,800.00	90.00	96.32	9,060.00	-218.69	1,973.84	1,985.92	0.00	0.00	0.00	
10,900.00	90.00	96.32	9,060.00	-229.71	2,073.23	2,085.92	0.00	0.00	0.00	
11,000.00	90.00	96.32	9,060.00	-240.72	2,172.62	2,185.92	0.00	0.00	0.00	
11,100.00	90.00	96.32	9,060.00	-251.73	2,272.01	2,285.92	0.00	0.00	0.00	
11,200.00	90.00	96.32	9,060.00	-262.74	2,371.40	2,385.92	0.00	0.00	0.00	
11,300.00	90.00	96.32	9,060.00	-273.75	2,470.80	2,485.92	0.00	0.00	0.00	
11,400.00	90.00	96.32	9,060.00	-284.77	2,570.19	2,585.92	0.00	0.00	0.00	
11,500.00	90.00	96.32	9,060.00	-295.78	2,669.58	2,685.92	0.00	0.00	0.00	
11,600.00	90.00	96.32	9,060.00	-306.79	2,768.97	2,785.92	0.00	0.00	0.00	
11,700.00	90.00	96.32	9,060.00	-317.80	2,868.36	2,885.92	0.00	0.00	0.00	
11,800.00	90.00	96.32	9,060.00	-328.81	2,967.76	2,985.92	0.00	0.00	0.00	
11,900.00	90.00	96.32	9,060.00	-339.83	3,067.15	3,085.92	0.00	0.00	0.00	
12,000.00	90.00	96.32	9,060.00	-350.84	3,166.54	3,185.92	0.00	0.00	0.00	

Database:	EDM 5000.1 Single User Db.	Local Co-ordinate Reference:	Well 11H
Company:	DEVON ENERGY	TVD Reference:	3332.1' GL + 25' GL @ 3357.10usft (Original Well Elev)
Project:	Eddy County, NM (NAD:83)	MD Reference:	3332.1' GL + 25' GL @ 3357.10usft (Original Well Elev)
Site:	Diamond PWU 22	North Reference:	Grid
Well:	11H	Survey Calculation Method:	Minimum Curvature
Wellbore:	OH		
Design:	Plan #1		

Planned Survey										
Measured Depth (usft)	Inclination (°)	Azimuth (°)	Vertical Depth (usft)	+N/S (usft)	+E/W (usft)	Vertical Section (usft)	Dogleg Rate (°/100usft)	Build Rate (°/100usft)	Turn Rate (°/100usft)	
12,100.00	90.00	96.32	9,060.00	-361.85	3,265.93	3,285.92	0.00	0.00	0.00	
12,200.00	90.00	96.32	9,060.00	-372.86	3,365.32	3,385.92	0.00	0.00	0.00	
12,300.00	90.00	96.32	9,060.00	-383.88	3,464.71	3,485.92	0.00	0.00	0.00	
12,400.00	90.00	96.32	9,060.00	-394.89	3,564.11	3,585.92	0.00	0.00	0.00	
12,500.00	90.00	96.32	9,060.00	-405.90	3,663.50	3,685.92	0.00	0.00	0.00	
12,600.00	90.00	96.32	9,060.00	-416.91	3,762.89	3,785.92	0.00	0.00	0.00	
12,700.00	90.00	96.32	9,060.00	-427.92	3,862.28	3,885.92	0.00	0.00	0.00	
12,800.00	90.00	96.32	9,060.00	-438.94	3,961.67	3,985.92	0.00	0.00	0.00	
12,900.00	90.00	96.32	9,060.00	-449.95	4,061.07	4,085.92	0.00	0.00	0.00	
13,000.00	90.00	96.32	9,060.00	-460.96	4,160.46	4,185.92	0.00	0.00	0.00	
13,100.00	90.00	96.32	9,060.00	-471.97	4,259.85	4,285.92	0.00	0.00	0.00	
13,200.00	90.00	96.32	9,060.00	-482.99	4,359.24	4,385.92	0.00	0.00	0.00	
13,300.00	90.00	96.32	9,060.00	-494.00	4,458.63	4,485.92	0.00	0.00	0.00	
13,400.00	90.00	96.32	9,060.00	-505.01	4,558.02	4,585.92	0.00	0.00	0.00	
13,500.00	90.00	96.32	9,060.00	-516.02	4,657.42	4,685.92	0.00	0.00	0.00	
13,600.00	90.00	96.32	9,060.00	-527.03	4,756.81	4,785.92	0.00	0.00	0.00	
13,700.00	90.00	96.32	9,060.00	-538.05	4,856.20	4,885.92	0.00	0.00	0.00	
13,800.00	90.00	96.32	9,060.00	-549.06	4,955.59	4,985.92	0.00	0.00	0.00	
13,900.00	90.00	96.32	9,060.00	-560.07	5,054.98	5,085.92	0.00	0.00	0.00	
13,965.46	90.00	96.32	9,060.00	-567.28	5,120.05	5,151.38	0.00	0.00	0.00	
TD - PBHL (DPWU22 11H)										

Design Targets										
Target Name	Dip Angle (°)	Dip Dir (°)	TVD (usft)	+N/S (usft)	+E/W (usft)	Northing (usft)	Easting (usft)	Latitude	Longitude	
SHL (DPWU22 11H) - plan hits target center - Point	0.00	0.00	0.00	0.00	0.00	598,606.06	621,834.50	32° 38' 43.237 N	104° 4' 18.507 W	
PBHL (DPWU22 11H) - plan hits target center - Point	0.00	0.01	9,060.00	-567.28	5,120.05	598,038.78	626,954.55	32° 38' 37.495 N	104° 3' 18.641 W	



Database:	EDM 5000.1 Single User Db	Local Co-ordinate Reference:	Well 11H
Company:	DEVON ENERGY	TVD Reference:	3332.1' GL + 25' GL @ 3357.10usft (Original Well Elev)
Project:	Eddy County, NM (NAD-83)	MD Reference:	3332.1' GL + 25' GL @ 3357.10usft (Original Well Elev)
Site:	Diamond PWU 22	North Reference:	Grid
Well:	11H	Survey Calculation Method:	Minimum Curvature
Wellbore:	OH		
Design:	Plan #1		

Formations						
Measured Depth (usft)	Vertical Depth (usft)	Name	Lithology	Dip (°)	Dip Direction (°)	
350.00	350.00	Salt		0.00		
1,240.00	1,240.00	Tansil		0.00		
1,385.00	1,385.00	Yates		0.00		
2,300.00	2,300.00	Queen		0.00		
2,685.00	2,685.00	Grayburg		0.00		
3,510.00	3,510.00	Delaware		0.00		
5,130.00	5,130.00	1st BS LM		0.00		
7,090.00	7,090.00	2nd BS LM		0.00		
8,015.00	8,015.00	3rd BS LM		0.00		
8,610.96	8,610.00	3rd BS SS		0.00		

Plan Annotations					
Measured Depth (usft)	Vertical Depth (usft)	Local Coordinates		Comment	
		+N-S (usft)	+E/W (usft)		
8,487.04	8,487.04	0.00	0.00	KOP 10° DLS	
9,387.04	9,060.00	-63.10	569.47	LP	
13,965.46	9,060.00	-567.28	5,120.05	TD	