

**District I**  
1625 N. French Dr., Hobbs, NM 88240  
Phone: (575) 393-6161 Fax: (575) 393-0720

**District II**  
811 S. First St., Artesia, NM 88210  
Phone: (575) 748-1283 Fax: (575) 748-9720

**District III**  
1000 Rio Brazos Road, Aztec, NM 87410  
Phone: (505) 334-6178 Fax: (505) 334-6170

**District IV**  
1220 S. St. Francis Dr., Santa Fe, NM 87505  
Phone: (505) 476-3460 Fax: (505) 476-3462

**State of New Mexico**  
**Energy Minerals and Natural Resources**  
**Oil Conservation Division**  
**1220 South St. Francis Dr.**  
**Santa Fe, NM 87505**

Form C-101  
Revised July 18, 2013

**APPLICATION FOR PERMIT TO DRILL, RE-ENTER, DEEPEN, PLUGBACK, OR ADD A ZONE**

<sup>1</sup> Operator Name and Address COG Operating LLC 2208 West Main Street Artesia, NM 88210		<sup>2</sup> OGRID Number 229137 <sup>3</sup> API Number 30-015-42879
<sup>4</sup> Property Code 308873	<sup>5</sup> Property Name CCAP STATE COM <sup>6</sup> Well No SH	

**7. Surface Location**

UL - Lot	Section	Township	Range	Lot Idn	Feet from	N/S Line	Feet From	E/W Line	County
I	16	22S	27E		2310'	South	300'	East	Eddy

**8. Proposed Bottom Hole Location**

UL - Lot	Section	Township	Range	Lot Idn	Feet from	N/S Line	Feet From	E/W Line	County
L	16	22S	27E		1980'	South	330'	West	Eddy

**9. Pool Information**

Pool Name	Pool Code
Wildcat Bone Spring	96403

**Additional Well Information**

<sup>11</sup> Work Type New Well	<sup>12</sup> Well Type Oil	<sup>13</sup> Cable/Rotary	<sup>14</sup> Lease Type State	<sup>15</sup> Ground Level Elevation 2106.8'
<sup>16</sup> Multiple N	<sup>17</sup> Proposed Depth 11628'	<sup>18</sup> Formation Bone Spring	<sup>19</sup> Contractor	<sup>20</sup> Spud Date 12/31/2014
Depth to Ground water		Distance from nearest fresh water well		Distance to nearest surface water

☒ We will be using a closed-loop system in lieu of lined pits

**21. Proposed Casing and Cement Program**

Type	Hole Size	Casing Size	Casing Weight/ft	Setting Depth	Sacks of Cement	Estimated TOC
Surface	17.5	13.375	48	250'	325	0
Intmd	12.25	9.625	40	1925'	675	0
Production	8.75	7.0	26	6704'	1025	0
Production	8.75	5.5	17	6704' - 7535'	250	0
Production	7.875	5.5	17	7535' - 11628'	1500	0

**Casing/Cement Program: Additional Comments**

Drill 17-1/2" hole to 250' with Fresh Water. Run 13-3/8", 48#, H-40 csg and cement to surface. Drill 12-1/4" hole to 1925' with Brine Water. Run 9-5/8", 40#, J-55 csg and cement to surface. Drill 8-3/4" hole with Fresh Water/Cut Brine to approximately 6704', kick off and drill 8-3/4" hole to end of curve (EOC) at approximately 7535' MD, 7225' TVD. Drill 7-7/8" lateral with Cut Brine to approximately 11,628' MD, 7125' TVD. Run 7" X 5 1/2" tapered production casing as follows: 7" 26# P110 LTC casing 0'-6704' and 5-1/2", 17#, P-110 LTC casing 6704'-11628' and cement to surface.

**22. Proposed Blowout Prevention Program**

Type	Working Pressure	Test Pressure	Manufacturer
Double Ram	3000	3000	Cameron

<sup>23</sup> I hereby certify that the information given above is true and complete to the best of my knowledge and belief.  
 I further certify that I have complied with 19.15.14.9 (A) NMAC ☒ and/or 19.15.14.9 (B) NMAC ☒ if applicable.  
 Signature: *Mayte Reyes*  
 Printed name: Mayte Reyes  
 Title: Regulatory Analyst  
 E-mail Address: mreyes1@concho.com  
 Date: 12/23/2014      Phone: 575-748-6945

OIL CONSERVATION DIVISION

Approved By: *[Signature]*  
 Title: *Dir H. Spewison*  
 Approved Date: *12/23/2014*      Expiration Date: *12/23/2016*  
 Conditions of Approval Attached

DISTRICT I  
1625 N. FRENCH DR., HOBBS, NM 88240  
Phone: (575) 393-6161 Fax: (575) 393-0720

DISTRICT II  
811 S. FIRST ST., ARTESIA, NM 88210  
Phone: (575) 748-1283 Fax: (575) 748-0720

DISTRICT III  
1000 RIO BRAZOS RD., AZTEC, NM 87410  
Phone: (505) 334-6178 Fax: (505) 334-6170

DISTRICT IV  
1220 S. ST. FRANCIS DR., SANTA FE, NM 87505  
Phone: (505) 476-3480 Fax: (505) 476-3482

State of New Mexico  
Energy, Minerals & Natural Resources Department  
**OIL CONSERVATION DIVISION**  
1220 SOUTH ST. FRANCIS DR.  
Santa Fe, New Mexico 87505

Form C-102  
Revised August 1, 2011  
Submit one copy to appropriate  
District Office

☐ AMENDED REPORT

**WELL LOCATION AND ACREAGE DEDICATION PLAT**

API Number 30-015 - <b>42879</b>	Pool Code 96403	Pool Name Wildcat; Bone Spring
Property Code	Property Name CCAP ST COM	Well Number 5H
UGRID No. 229137	Operator Name COG OPERATING, LLC	Elevation 3106.8

**Surface Location**

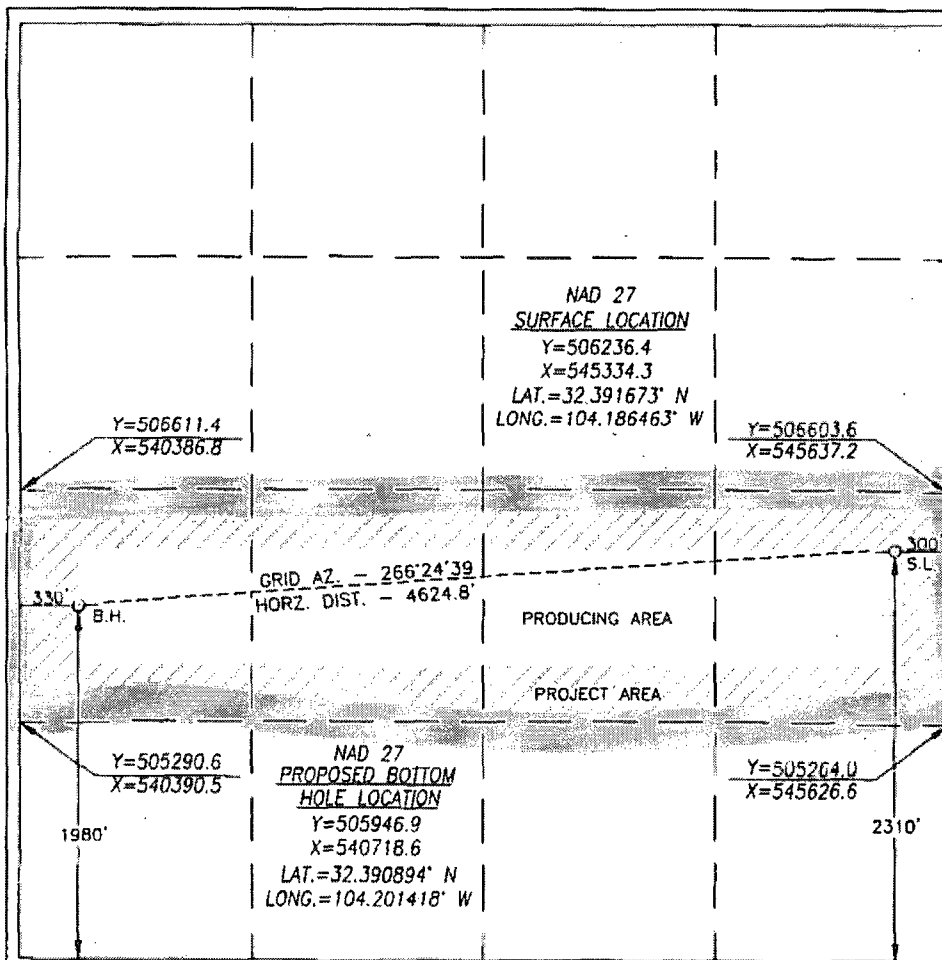
UL or lot No.	Section	Township	Range	Lot Idn	Feet from the	North/South line	Feet from the	East/West line	County
I	16	22-S	27-E		2310	SOUTH	300	EAST	EDDY

**Bottom Hole Location If Different From Surface**

UL or lot No.	Section	Township	Range	Lot Idn	Feet from the	North/South line	Feet from the	East/West line	County
L	16	22-S	27-E		1980	SOUTH	330	WEST	EDDY

Dedicated Acres 160	Joint or Infill	Consolidation Code	Order No.
------------------------	-----------------	--------------------	-----------

NO ALLOWABLE WILL BE ASSIGNED TO THIS COMPLETION UNTIL ALL INTERESTS HAVE BEEN CONSOLIDATED  
OR A NON-STANDARD UNIT HAS BEEN APPROVED BY THE DIVISION



**OPERATOR CERTIFICATION**

I hereby certify that the information herein is true and complete to the best of my knowledge and belief, and that this organization either owns a working interest or unleased mineral interest in the land including the proposed bottom hole location or has a right to drill this well at this location pursuant to a contract with an owner of such mineral or working interest, or to a voluntary pooling agreement or a compulsory pooling order heretofore entered by the division.

*Mayte Reyes* 12/23/14  
Signature Date

Mayte Reyes

Printed Name

mreyes1@concho.com

E-mail Address

**SURVEYOR CERTIFICATION**

I hereby certify that the well location shown on this plat was plotted from field notes of actual surveys made by me or under my supervision, and that the same is true and correct to the best of my belief.

OCTOBER 23, 2014

Date of Survey

Signature & Seal of Professional Surveyor



*Chad Harcrow* 11/17/14  
Certificate No. CHAD HARCROW 17777  
W.O. # 14-1029 DRAWN BY: AF

### CCAP State Com #5H

	Hole Size	Casing	Wt	Depth	Cmt	TOC
Surface	17.5	13.375	48	0-250'	325	0
Intrmd	12.25	9.625	40	0-1925'	675	0
Prod	8.75	7.0	26	0-6704'	1025	0
Prod	8.75	5.5	17	6704-7535'	250	0
Prod	7.875	5.5	17	7535'-11628'	1500	0

Drill 17-1/2" hole to 250' with Fresh Water. Run 13-3/8", 48#, H-40 csg and cement to surface. Drill 12-1/4" hole to 1925' with Brine Water. Run 9-5/8", 40#, J-55 csg and cement to surface. Drill 8-3/4" hole with Fresh Water/Cut Brine to approximately 6704', kick off and drill 8-3/4" hole to end of curve (EOC) at approximately 7535' MD, 7225' TVD. Drill 7-7/8" lateral with Cut Brine to approximately 11,628' MD, 7125' TVD. Run 7" X 5 1/2" tapered production casing as follows: 7" 26# P110 LTC casing 0'-6704' and 5-1/2", 17#, P-110 LTC casing 6704'-11628' and cement to surface.

### Well Control

Type	Pressure	Test	Manufacture
Double Ram	3000	3000	Cameron