

DISTRICT I

1025 N. French Dr., Hobbs, NM 88240
Phone (505) 593-6101 Fax: (505) 593-0780

DISTRICT II

611 S. First St., Artesia, NM 88210
Phone (505) 746-1888 Fax: (505) 746-0780

DISTRICT III

1000 Rio Brazos Rd., Aztec, NM 87410
Phone (505) 334-6178 Fax: (505) 334-6170

DISTRICT IV

1220 S. St. Francis Dr., Santa Fe, NM 87505
Phone (505) 476-5469 Fax: (505) 476-0468

State of New Mexico
Energy, Minerals and Natural Resources Department

Form C-102

Revised August 1, 2011

Submit one copy to appropriate
District Office

OIL CONSERVATION DIVISION

1220 South St. Francis Dr.
Santa Fe, New Mexico 87505

WELL LOCATION AND ACREAGE DEDICATION PLAT

☐ AMENDED REPORT

API Number 30-015-41430	Pool Code 30215	Pool Name Hay Hollow; Bone Spring
Property Code 39940	Property Name OWL DRAW 22 AP FED COM	Well Number 1H
GRID No. 14744	Operator Name MEWBOURNE OIL COMPANY	Elevation 3148

Surface Location

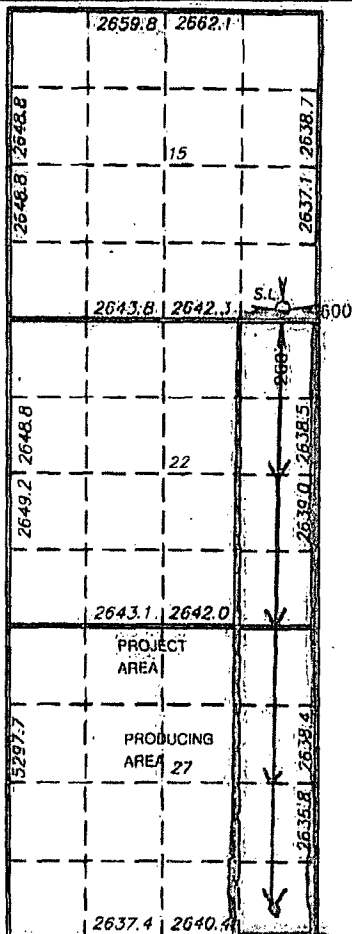
UL or lot No.	Section	Township	Range	Lot Idn	Feet from the	North/South line	Feet from the	East/West line	County
P	15	26 S	27 E		200	SOUTH	600	EAST	EDDY

Bottom Hole Location If Different From Surface

UL or lot No.	Section	Township	Range	Lot Idn	Feet from the	North/South line	Feet from the	East/West line	County
P	27	26S	27E		336	SOUTH	572	EAST	EDDY
Dedicated Acres 320	Joint or Infill	Consolidation Code	Order No.						

NO ALLOWABLE WILL BE ASSIGNED TO THIS COMPLETION UNTIL ALL INTERESTS HAVE BEEN CONSOLIDATED
OR A NON-STANDARD UNIT HAS BEEN APPROVED BY THE DIVISION

SURFACE LOCATION
Lat - N 32°02'06.89"
Long - W 104°10'15.15"
NMSPC- N 378587.46
E 550341.64
(NAD-27)



OPERATOR CERTIFICATION

I hereby certify that the information contained herein is true and complete to the best of my knowledge, and belief, and that this organization either owns a working interest or unleased mineral interest in the land including the proposed bottom hole location or has a right to drill this well at this location pursuant to a contract with an owner of such a mineral or working interest, or to a voluntary pooling agreement or a compulsory pooling order heretofore entered by the division.

J. Lathan 10/27/14
Signature Date

J. Lathan
Printed Name

Email Address

SURVEYOR CERTIFICATION

I hereby certify that the well location shown on this plat was plotted from field notes of actual surveys made by me or under my supervision, and that the same is true and correct to the best of my belief.

GARY L. JONES
Date Surveyed
Signature & Seal of Professional Surveyor
W. 2693

Certificate No. Gary L. Jones 7977

BASIN SURVEYS 27993