

District I  
1625 N. French Dr., Hobbs, NM 88240  
Phone: (575) 393-6161 Fax: (575) 393-0720  
District II  
811 S. First St., Artesia, NM 88210  
Phone: (575) 748-1283 Fax: (575) 748-9720  
District III  
1000 Rio Brazos Road, Aztec, NM 87410  
Phone: (505) 334-6178 Fax: (505) 334-6170  
District IV  
1220 S. St. Francis Dr., Santa Fe, NM 87505  
Phone: (505) 476-3460 Fax: (505) 476-3462

State of New Mexico  
Energy, Minerals & Natural Resources Department  
NM OIL CONSERVATION  
ARTESIA DISTRICT  
OIL CONSERVATION DIVISION  
1220 South St. Francis Dr.  
Santa Fe, NM 87505

Form C-102  
Revised August 1, 2011  
Submit one copy to appropriate  
District Office

FEB 26 2015

RECEIVED

☐ AMENDED REPORT

WELL LOCATION AND ACREAGE DEDICATION PLAT

<sup>1</sup> API Number 30-015-42707	<sup>2</sup> Pool Code 24720	<sup>3</sup> Pool Name Forty Niner Ridge; Bone Spring
<sup>4</sup> Property Code 35090	<sup>5</sup> Property Name FORTY NINER RIDGE UNIT	<sup>6</sup> Well Number 104H
<sup>7</sup> OGRID No. 14744	<sup>8</sup> Operator Name MEWBOURNE OIL COMPANY	<sup>9</sup> Elevation 3133'

<sup>10</sup> Surface Location

UL or lot no. K	Section 16	Township 23-S	Range 30-E	Lot Idn	Feet from the 2509	North/South line SOUTH	Feet from the 2451	East/West line WEST	County EDDY
--------------------	---------------	------------------	---------------	---------	-----------------------	---------------------------	-----------------------	------------------------	----------------

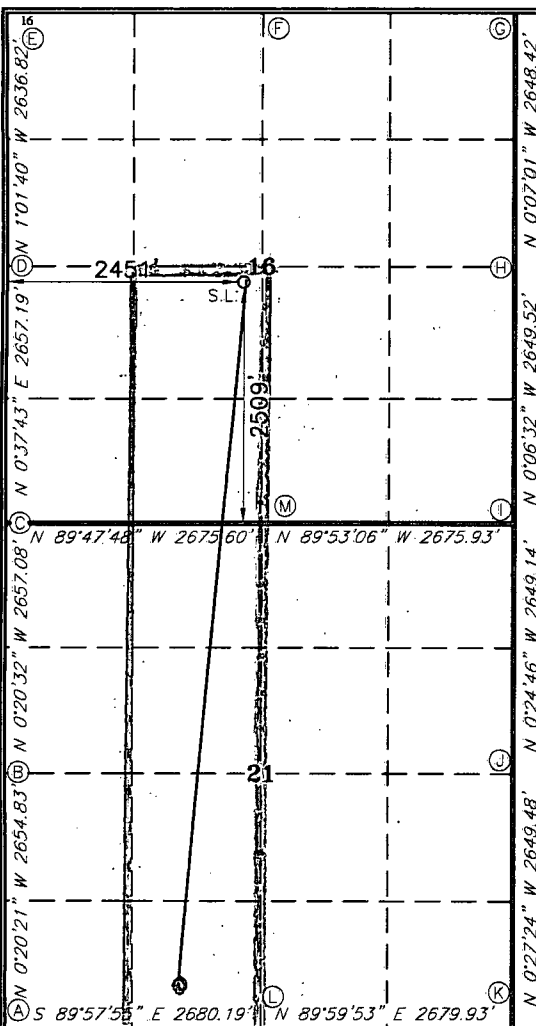
<sup>11</sup> Bottom Hole Location If Different From Surface

UL or lot no. N	Section 21	Township 23S	Range 30E	Lot Idn	Feet from the 335'	North/South line South	Feet from the 1987	East/West line West	County Eddy
--------------------	---------------	-----------------	--------------	---------	-----------------------	---------------------------	-----------------------	------------------------	----------------

<sup>12</sup> Dedicated Acres 240	<sup>13</sup> Joint or Infill	<sup>14</sup> Consolidation Code	<sup>15</sup> Order No.
--------------------------------------	-------------------------------	----------------------------------	-------------------------

No allowable will be assigned to this completion until all interests have been consolidated or a non-standard unit has been approved by the division.

N 89°53'28" W 2678.84' N 89°53'17" W 2680.37'



GEODETIC DATA  
NAD 27 GRID - NM EAST  
  
SURFACE LOCATION  
N 474807.8  
E 638076.8  
  
LAT: 32.30457193° N  
LONG: 103.88643505° W

CORNER DATA  
NAD 27 GRID - NM EAST  
  
A: FND BRASS CAP 1942  
N 466995.2 - E 635629.7  
  
B: FND BRASS CAP 1942  
N 469650.0 - E 635614.0  
  
C: FND BRASS CAP 1942  
N 472307.0 - E 635598.1  
  
D: FND BRASS CAP 1942  
N 474941.7 - E 640944.6  
  
E: FND BRASS CAP 1942  
N 477600.4 - E 635580.0  
  
F: FND BRASS CAP 1942  
N 477595.3 - E 638258.8  
  
G: FND BRASS CAP 1942  
N 477590.1 - E 640939.2  
  
H: FND BRASS CAP 1942  
N 474941.7 - E 640944.6  
  
I: FND BRASS CAP 1942  
N 472292.2 - E 640949.6  
  
J: FND BRASS CAP 1942  
N 469643.1 - E 640968.7  
  
K: FND BRASS CAP 1942  
N 466993.7 - E 640989.8  
  
L: FND BRASS CAP 1942  
N 466993.6 - E 638309.9  
  
M: FND BRASS CAP 1942  
N 472297.5 - E 638273.7

<sup>17</sup> OPERATOR CERTIFICATION

I hereby certify that the information contained herein is true and complete to the best of my knowledge and belief, and that this organization either owns a working interest or unleased mineral interest in the land including the proposed bottom hole location or has a right to drill this well at this location pursuant to a contract with an owner of such a mineral or working interest, or to a voluntary pooling agreement or a compulsory pooling order heretofore entered by the division.

Signature: Jackie Lathan Date: 2/9/14

Printed Name: Jackie Lathan

E-mail Address

<sup>18</sup> SURVEYOR CERTIFICATION

I hereby certify that the well location shown on this plat was plotted from field notes of actual surveys made by me or under my supervision, and that the same is true and correct to the best of my belief.

2/6/14

Date of Survey

Signature and Seal of Professional Surveyor

ROBERT M. HOWETT  
NEW MEXICO  
19680  
PROFESSIONAL SURVEYOR  
19680  
Certificate Number