

NM OIL CONSERVATION

MAR 09 2015

RECEIVED

CONSERVATION DIVISION

1220 South St. Francis Dr.

Santa Fe, NM 87505

WELL API NO.

30-015-29345

5. Indicate Type of Lease

STATE ☒ FEE ☐

6. State Oil &amp; Gas Lease No.

7. Lease Name or Unit Agreement Name

COTTON DRAW UNIT

8. Well Number

81

9. OGRID Number

6137

10. Pool name or Wildcat

SWD;DELAWARE

## SUNDRY NOTICES AND REPORTS ON WELLS

(DO NOT USE THIS FORM FOR PROPOSALS TO DRILL OR TO DEEPEN OR PLUG BACK TO A DIFFERENT RESERVOIR. USE "APPLICATION FOR PERMIT" (FORM C-101) FOR SUCH PROPOSALS.)

1. Type of Well: Oil Well ☐ Gas Well ☐ Other-SWD

2. Name of Operator

Devon Energy Production Company, LP

3. Address of Operator

333 W. Sheridan Avenue, Oklahoma City, OK 73102

4. Well Location

Unit Letter L : 1650' feet from the South line and 660' feet from the West lineSection 02 Township 25S Range 31E NMPM Eddy County, NM

11. Elevation (Show whether DR, RKB, RT, GR, etc.)

3455' KB; 3437' GL; 18' KB to GL

## 12. Check Appropriate Box to Indicate Nature of Notice, Report or Other Data

## NOTICE OF INTENTION TO:

PERFORM REMEDIAL WORK ☐ PLUG AND ABANDON ☐TEMPORARILY ABANDON ☐ CHANGE PLANS ☐PULL OR ALTER CASING ☐ MULTIPLE COMPL ☐DOWNHOLE COMMINGLE ☐CLOSED-LOOP SYSTEM ☐OTHER: ☐

## SUBSEQUENT REPORT OF:

REMEDIAL WORK ☐ ALTERING CASING ☐COMMENCE DRILLING OPNS. ☐ P AND A ☒CASING/CEMENT JOB ☐OTHER: ☐

13. Describe proposed or completed operations. (Clearly state all pertinent details, and give pertinent dates, including estimated date of starting any proposed work). SEE RULE 19.15.7.14 NMAC. For Multiple Completions: Attach wellbore diagram of proposed completion or recompletion.

(9# mud circulated between plugs)

1. 2/3/15-MIRU. Set CIBP @ 8,700'. Spot 30 sx Cl H cmt. Tagged @ 8,487'. (Bone Spring perms 8725'-9445')

2. Spot 30 sx Cl H cmt @ 7,634'. No tag. Spot 30 sx Cl H @ 7,634'. Tagged @ 7,440'.

3. Spot 30 sx Cl C cmt @ 5,341' - 5,531'.

4. Spot 60 sx Cl C cmt @ 4,561'. Tagged @ 4,199'. (B.Salt @ 4,296'. T.Bell Canyon @ 4,317'. 9-5/8" shoe @ 4,500'. Sqzd swd interval @ 4,556'-5,360')

5. Cut 7" csg @ 3,712' twice. Unable to pull. Dropped csg spear. Tagged spear @ 4,442'. Previous plug tag was @ 4,199'. Spot 50 sx Cl C @ 4,442'. Tagged @ 4,175'. Spot 30 sx Cl C from 3,612' to 3,785'. (Csg cut @ 3,712)

6. Cut 7" csg @ 3,485'. Unable to pull. Cut &amp; pull 7" csg from 3,068'. Spot 30 sx Cl C @ 3,559'. Tagged @ 3,414'. Spot 45 sx Cl C @ 3,137'. Tagged @ 2,998.

7. Spot 55 sx Cl C @ 1,022'. Tagged @ 873'. (T.Salt @ 958')

8. Spot 55 sx Cl C @ 776'. Tagged @ 637'. (13-3/8" shoe @ 697')

9. 2/19/15-Spot 40 sx Cl C from 129' to surface. 2/26/15-Cut wellhead off. Set dry hole marker. Wellbore plugged &amp; abandoned.

Spud Date:

Rig Release Date:

I hereby certify that the information above is true and complete to the best of my knowledge and belief.

SIGNATURE

Ronnie Slack

TITLE Operations Technician

DATE 3-4-15

Type or print name Ronnie Slack E-mail address: Ronnie.Slack@dvni.com PHONE: 405-552-4615

For State Use Only

APPROVED BY:

D. Wade

TITLE

Dr. J. Superwist

DATE

3/10/15

Conditions of Approval (if any):

\* Submit Subsequent C-103

**DEVON ENERGY PRODUCTION COMPANY LP**

Well Name: Cotton Draw Unit 81		Field: Cotton Draw Delaware.South	
Location: Sec 2-T25S-R31E; 1650' FSL & 660' FWL		County: Eddy	State: NM
Elevation: 3455' KB; 3437' GL; 18' KB-GL		Spud Date: 3/1/97	Compl Date: 6/11/97
API#: 30-015-29345	Prepared by: Ronnie Slack	Date: 3/4/2015	Rev:

**WELBORE PLUGGED & ABANDONED - 2/26/15**

17-1/2" Hole  
13-3/8", 48# & 54.5#, H40 & K55, @ 697'  
 Cmt'd w/ 700 sx. Topped out w/ 300 sx.  
 Cement to surface

TOC @ 3750'-CBL (4/7/11)

12-1/4" Hole  
9-5/8", 40# & 36#, J55, N80, S95, @ 4500'  
 Cmt'd w/ 1700 sx. Cement circulated.

**SWD INTERVAL** (Perfed 4/7/11)  
**Bell Canyon**  
 4556-4560; 4574-4580; 4720-4730  
 4739-4744; 4969-4979; 4990-5000  
 5122-5148; 5216-5246

**Cherry Canyon**  
 5332-5360.  
 Frac 4556-5360 w/327KH 16/30 (4/9/11)  
 Acidize w/ 6000 gal 15% HCl - (6/8/13)

Injection Perfs sqzd w/ 250 sx CI C (3/13/14)  
 Injection Perfs re-sqzd w/315 sx CI C (3/24/14)

Shot sqz perfs @ 5500' (3/31/11)  
 Sqz w/800 sx cmt. TOC @ 3750'-CBL (4/7/11)

Shot sqz perfs @ 6000', unable to pump in. (2/19/11)  
 Sqzd perfs @ 6000' w/75 sx CI C (4/17/14)  
 Re-sqzd perfs @ 6000' w/730 sx total CI C (4/23/14)  
 Re-sqzd perfs @ 6000' w/300 sx total CI C (4/24/14)

TOC @ 6760'-Temp Survey (per drlg rpt 4/25/97)

**LOWER BRUSHY CANYON** (7/6/97)  
 7620' - 7671'

7/8/97: Acidized & Frac'd  
 8/11/97: 20 bo, 302 bw, 32 mcf  
 1/22/05: Sqzd w/150 sks "C" Cement  
 1/25/05: Tst'd csg to 500 psi, 30 min. Ok.

**BONE SPRING** (1/18/05)  
 8725' - 8768' 2/2/05-acidized w/4000 gals 7.5% HCl

9428' - 9445' 1/19/05-acidized w/1500 gals 7.5% HCl  
 1/26/05-fracc w/130,290#

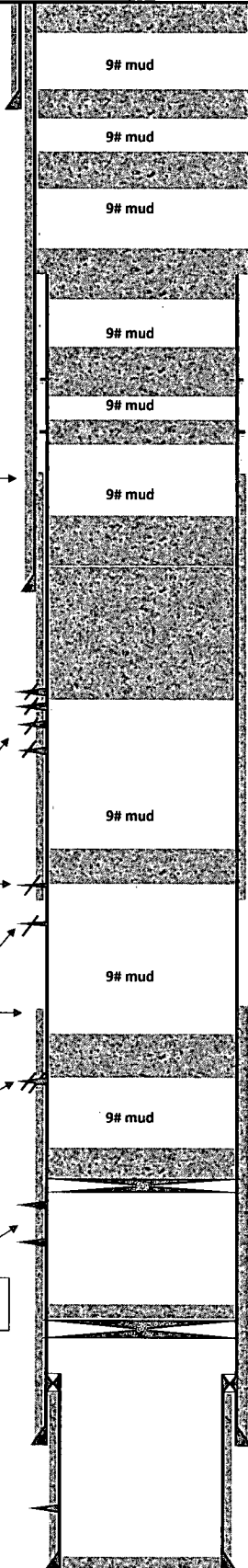
Attempted to sqz Bone Spring perfs. PU to 2800 psi, .25 bpm. Not enough rate to sqz. (4/11/14)

5" Liner top tagged @ 11705'

8-3/4" Hole  
7", 29#, P110, LTC, @ 12000'  
 Cmt'd 500 sx 1st stg; 1550 sx 2nd stg

**WOLF CAMP** (6/8/97)  
 12882' - 12984' Wet

6-1/8" Hole  
5", 18#, @ 13627'  
 Cmt'd w/ 350 sx



Cut wellhead off. Set dry hole marker. (2/26/15)  
 Spot 40 sx CI C from 129' to surface. (2/19/15)

Tagged TOC @ 637'. (2/19/15)  
 Spot 55 sx CI C @ 776'. (2/18/15)

Tagged TOC @ 873'. (2/18/15)  
 Spot 55 sx CI C @ 1,002' (2/18/15)  
 (T.Salt @ 958')

Tagged TOC @ 2,998'. (2/18/15)  
 Spot 45 sx CI C Stub plug @ 3,137'. (2/17/15)  
 Cut 7" csg @ 3,068'. POOH w/csg. (2/13/15)

Tagged TOC @ 3,414'. (2/17/15)  
 Spot 30 sx CI C @ 3,559'. (2/17/15)  
 Cut 7" csg @ 3,485'. Unable to pull. (2/13/15)

Spot 30 sx CI C @ 3,612' - 3,785' (2/12/15)  
 Cut 7" csg @ 3,712'. Unable to pull. (2/10-2/11/15)

Tagged TOC @ 4,175'. (2/12/15)  
 Re-Spot 50 sx CI C @ 4,442'. (2/12/15)  
 Dropped csg spear. Tag spear @ 4,442' (2/11/15)  
 Tagged TOC @ 4,199'. (2/10/15)  
 (B.Salt @ 4,296'; T.Bell Canyon @ 4,317')

Spot 60 sx CI C @ 4,561'. (2/9/15)

Spot 30 sx CI C @ 5,341' - 5,531'. (2/9/15)

Spot 30 sx CI H @ 7,634'. Tagged @ 7,440'. (2/9/15)  
 Spot 30 sx CI H @ 7,634'. No tag. (2/6/15)

Tagged TOC @ 8,487'. (2/9/15)  
 CIBP @ 8,700'. 30 SX CI H on top (2/4/15)

Cleaned out to 11,348' (4/29/14)

Capped w/ 2 sx cement  
 CIBP @ 11584' (7/4/97)

TD @ 13627'