

District I  
1625 N. French Dr., Hobbs, NM 88240  
Phone: (575) 393-6161 Fax: (575) 393-0720

District II  
811 S. First St., Artesia, NM 88210  
Phone: (575) 748-1283 Fax: (575) 748-9720

District III  
1000 Rio Brazos Road, Aztec, NM 87410  
Phone: (505) 334-6178 Fax: (505) 334-6170

District IV  
1220 S. St. Francis Dr., Santa Fe, NM 87505  
Phone: (505) 476-3460 Fax: (505) 476-3462

State of New Mexico

Form C-101  
Revised July 18, 2013

Energy Minerals and Natural Resources

NM OIL CONSERVATION

Oil Conservation Division

☐ AMENDED REPORT

1220 South St. Francis Dr.

Santa Fe, NM 87505

MAR 05 2015

RECEIVED

APPLICATION FOR PERMIT TO DRILL, RE-ENTER, DEEPEN, PLUGBACK, OR ADD A ZONE

Operator Name and Address BC Operating, Inc. P. O. Box 50820 Midland TX 79710		OGRID Number 160825
		API Number 30-015- 42998
Property Code 314337	Property Name Lackey 34 SWD	Well No. 1

7. Surface Location

UL - Lot	Section	Township	Range	Lot Idn	Feet from	N/S Line	Feet From	E/W Line	County
L	34	23 S	26 E		2480	S	235	W	Eddy

\* Proposed Bottom Hole Location

UL - Lot	Section	Township	Range	Lot Idn	Feet from	N/S Line	Feet From	E/W Line	County
L	34	23 S	26 E		2480	S	235	W	Eddy

9. Pool Information

Pool Name SWD; Cherry Canyon - Brushy Canyon (C-108 filed today in Santa Fe)	Pool Code 97996
---------------------------------------------------------------------------------	--------------------

Additional Well Information

11. Work Type N	12. Well Type S	13. Cable/Rotary R	14. Lease Type P (for SWD)	15. Ground Level Elevation 3344
16. Multiple N	17. Proposed Depth 5350'	18. Formation Bone Spring lime	19. Contractor	20. Spud Date Upon C-108 Approval
Depth to Ground water <350' (well C 01246)		Distance from nearest fresh water well 5740' (well C 01246)		Distance to nearest surface water >825' south of Cass Draw

☒ We will be using a closed-loop system in lieu of lined pits

21. Proposed Casing and Cement Program

Type	Hole Size	Casing Size	Casing Weight/ft	Setting Depth	Sacks of Cement	Estimated TOC
Surface	16"	13-3/8"	48	630'	550	GL
Intermed.	12-1/4"	9-5/8"	40	2625'	1015	GL
Product'n	8-3/4"	7"	23	5265'	710	GL

Casing/Cement Program: Additional Comments

Will set packer at @ 2575', run 4-1/2" tubing, and dispose from 2625' - 5250'. Will not perf Bone Spring.

22. Proposed Blowout Prevention Program

Type	Working Pressure	Test Pressure	Manufacturer
	3000		

23. I hereby certify that the information given above is true and complete to the best of my knowledge and belief.

I further certify that I have complied with 19.15.14.9 (A) NMAC ☒ and/or 19.15.14.9 (B) NMAC ☐, if applicable.

Signature:

Printed name: Brian Wood

Title: Consultant

E-mail Address: brian@permitswest.com

Date: 3-2-15

Phone: (505) 466-8120

OIL CONSERVATION DIVISION

Approved By:

Title:

Approved Date: 3/24/2015

Expiration Date: 3/24/2017

Conditions of Approval Attached

District I  
1625 N. French Dr., Hobbs, NM 88240  
Phone: (575) 393-6161 Fax: (575) 393-0720  
District II  
811 S. First St., Artesia, NM 88210  
Phone: (575) 748-1283 Fax: (575) 748-9720  
District III  
1000 Rio Brazos Road, Aztec, NM 87410  
Phone: (505) 334-6178 Fax: (505) 334-6170  
District IV  
1220 S. St. Francis Dr., Santa Fe, NM 87505  
Phone: (505) 476-3460 Fax: (505) 476-3462

State of New Mexico **NM OIL CONSERVATION**  
Energy, Minerals & Natural Resources Department  
OIL CONSERVATION DIVISION  
1220 South St. Francis Dr.  
Santa Fe, NM 87505

ARTESIA DISTRICT

MAR 05 2015

Form C-102

Revised August 1, 2011

Submit one copy to appropriate  
District Office

RECEIVED

☐ AMENDED REPORT

WELL LOCATION AND ACREAGE DEDICATION PLAT

<sup>1</sup> API Number 30-015- <b>42998</b>	<sup>2</sup> Pool Code 97996	<sup>3</sup> Pool Name SWD; Cherry Canyon - Brushy Canyon
<sup>4</sup> Property Code <b>314337</b>	<sup>5</sup> Property Name Lackey 34 SWD	<sup>6</sup> Well Number 1
<sup>7</sup> OGRID No. 160825	<sup>8</sup> Operator Name BC Operating, Inc.	<sup>9</sup> Elevation 3344

<sup>10</sup> Surface Location

UL or lot no.	Section	Township	Range	Lot Idn	Feet from the	North/South line	Feet from the	East/West line	County
L	34	T23S	R26E		2480'	SOUTH	235'	WEST	EDDY

<sup>11</sup> Bottom Hole Location If Different From Surface

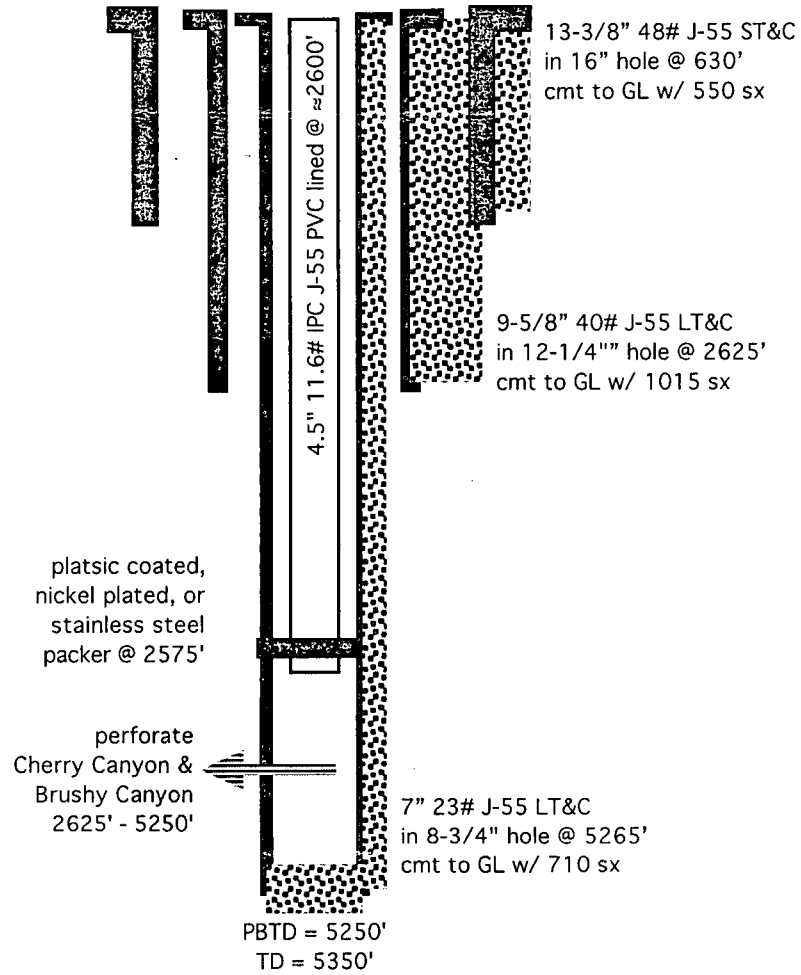
UL or lot no.	Section	Township	Range	Lot Idn	Feet from the	North/South line	Feet from the	East/West line	County

<sup>12</sup> Dedicated Acres	<sup>13</sup> Joint or Infill	<sup>14</sup> Consolidation Code	<sup>15</sup> Order No.

No allowable will be assigned to this completion until all interests have been consolidated or a non-standard unit has been approved by the division.

<sup>16</sup> <div style="display: flex; justify-content: space-between;"> <div> SECTION 28 SECTION 33 </div> <div> SECTION 27 SECTION 34 </div> <div> SECTION 26 SECTION 35 </div> </div> <div style="text-align: center; margin-top: 20px;"> <p><b>SURFACE HOLE LOCATION</b>  2480' FNL 235' FWL  NAD 83, SPCS NM EAST  X:555088.59' / Y:458425.34'  LAT:32.26027852N / LON:104.28884715W  NAD 27, SPCS NM EAST  X:513906.52' / Y:458367.43'  LAT:32.26016099N / LON:104.28834534W</p> </div> <div style="position: relative; height: 150px;"> <div style="position: absolute; left: 10px; top: 10px;">235'</div> <div style="position: absolute; left: 10px; bottom: 10px;">2480'</div> </div> <div style="display: flex; justify-content: space-between; margin-top: 20px;"> <div> SECTION 33 SECTION 4 </div> <div> T23S-R26E T24S-R26E </div> <div> SECTION 34 SECTION 3 </div> <div> SECTION 35 SECTION 2 </div> </div>				<p><b><sup>17</sup> OPERATOR CERTIFICATION</b></p> <p><i>I hereby certify that the information contained herein is true and complete to the best of my knowledge and belief, and that this organization either owns a working interest or unleased mineral interest in the land including the proposed bottom hole location or has a right to drill this well at this location pursuant to a contract with an owner of such a mineral or working interest, or to a voluntary pooling agreement or a compulsory pooling order heretofore entered by the division.</i></p> <div style="display: flex; justify-content: space-between;"> <div> Signature    Brian Wood </div> <div> Date  2-22-15 </div> </div> <div style="margin-top: 10px;"> Printed Name  brian@permitswest.com </div> <div style="margin-top: 10px;"> E-mail Address </div>	
				<p><b><sup>18</sup> SURVEYOR CERTIFICATION</b></p> <p><i>I hereby certify that the well location shown on this plat was plotted from field notes of actual surveys made by me or under my supervision, and that the same is true and correct to the best of my belief.</i></p> <div style="text-align: center; margin-top: 10px;"> DECEMBER 12, 2014  Date of Survey </div> <div style="display: flex; justify-content: space-between;"> <div> Signature and Seal of Professional Surveyor    Certificate Number </div> <div>   LLOYD P. SHORT 21653 </div> </div>	

BC Operating, Inc.  
Lackey 34 SWD 1  
2480 FSL & 235 FWL  
34-23s-26e Eddy County, NM



(not to scale)

NM OIL CONSERVATION  
ARTESIA DISTRICT

MAR 05 2015

RECEIVED