

**NM OIL CONSERVATION**  
ARTESIA DISTRICT

**NM OIL CONSERVATION**  
ARTESIA DISTRICT

FORM APPROVED  
OMB No. 1004-0137  
Expires July 31, 2010

APR 27 2015  
UNITED STATES  
DEPARTMENT OF THE INTERIOR  
BUREAU OF LAND MANAGEMENT

APR 27 2015

**HIGH CAVE KARST**

RECEIVED  
APPLICATION FOR PERMIT TO DRILL OR REENTER

|  |  |
|--|--|
| 5. Lease Serial No.<br>NMNM 14758  |  |
| 6. If Indian, Allottee or Tribe Name   |  |
| 7. If Unit or CA Agreement, Name and No.<br>(314782)   |  |
| 8. Lease Name and Well No.<br>Long Draw 9 Y2BO Fed Com #2H   |  |
| 9. API Well No.<br>30-015-43079  |  |
| 10. Field and Pool, or Exploratory<br>North Seven Rivers, Glorieta-Yeso Pool   |  |
| 11. Sec., T. R. M. or Blk. and Survey or Area<br>Sec. 4, T20S R25E   |  |
| 12. County or Parish<br>Eddy   | 13. State<br>NM  |
| 15. Distance from proposed* location to nearest property or lease line, ft.<br>(Also to nearest drig. unit line, if any) | 16. No. of acres in lease<br>1,442.36  |
| 17. Spacing Unit dedicated to this well<br>160   | 18. Distance from proposed location* to nearest well, drilling, completed, applied for, on this lease, ft.<br>140' -Long Draw "4" O #1 |
| 19. Proposed Depth<br>7,539.9'-MD<br>2,813.0'-TVD  | 20. BLM/BIA Bond No. on file<br>NM-1693 nationwide, NMB-000919   |
| 21. Elevations (Show whether DF, KDB, RT, GL, etc.)<br>3478'   | 22. Approximate date work will start*<br>08/15/2014  |
| 23. Estimated duration<br>60 Days  |  |

|   |  |  |  |
|---|--|--|--|
| 1a. Type of work: <input checked="" type="checkbox"/> DRILL <input type="checkbox"/> REENTER  |  | ATS-14-943   |  |
| 1b. Type of Well: <input checked="" type="checkbox"/> Oil Well <input type="checkbox"/> Gas Well <input type="checkbox"/> Other   |  | <input checked="" type="checkbox"/> Single Zone <input type="checkbox"/> Multiple Zone   |  |
| 2. Name of Operator Mewbourne Oil Company   |  |  |  |
| 3a. Address PO Box 5270<br>Hobbs, NM 88241  |  | 3b. Phone No. (include area code)<br>575-393-5905  |  |
| 4. Location of Well (Report location clearly and in accordance with any State requirements.)*<br>At surface 330' FSL & 1790' FEL Sec. 4, T20S, R25E<br>At proposed prod. zone 530' FSL & 1650' FEL Sec. 9, T20S, R25E |  |  |  |
| 14. Distance in miles and direction from nearest town or post office*<br>22.3 miles south of Artesia, NM  |  |  |  |
| 15. Distance from proposed* location to nearest property or lease line, ft.<br>(Also to nearest drig. unit line, if any)  |  | 16. No. of acres in lease<br>1,442.36  |  |
| 17. Spacing Unit dedicated to this well<br>160  |  | 18. Distance from proposed location* to nearest well, drilling, completed, applied for, on this lease, ft.<br>140' -Long Draw "4" O #1 |  |
| 19. Proposed Depth<br>7,539.9'-MD<br>2,813.0'-TVD   |  | 20. BLM/BIA Bond No. on file<br>NM-1693 nationwide, NMB-000919   |  |
| 21. Elevations (Show whether DF, KDB, RT, GL, etc.)<br>3478'  |  | 22. Approximate date work will start*<br>08/15/2014  |  |
| 23. Estimated duration<br>60 Days   |  |  |  |

24. Attachments

The following, completed in accordance with the requirements of Onshore Oil and Gas Order No. 1, must be attached to this form:

- |  |   |
|--|---|
| 1. Well plat certified by a registered surveyor.   | 4. Bond to cover the operations unless covered by an existing bond on file (see Item 20 above). |
| 2. A Drilling Plan.  | 5. Operator certification   |
| 3. A Surface Use Plan (if the location is on National Forest System Lands, the SUPO must be filed with the appropriate Forest Service Office). | 6. Such other site specific information and/or plans as may be required by the BLM.             |

|  |  |                     |
|--|--|---------------------|
| 25. Signature<br><i>Bradley Bishop</i>         | Name (Printed/Typed)<br>BRADLEY BISHOP | Date<br>7-1-14      |
| Title  |  |                     |
| Approved by (Signature)<br><b>Steve Caffey</b> | Name (Printed/Typed)                   | Date<br>APR 23 2015 |
| Title  |  |                     |
| Office<br>CARLSBAD FIELD OFFICE                |  |                     |

Application approval does not warrant or certify that the applicant holds legal or equitable title to those rights in the subject lease which would entitle the applicant to conduct operations thereon.  
Conditions of approval, if any, are attached.

**APPROVAL FOR TWO YEARS**

Title 18 U.S.C. Section 1001 and Title 43 U.S.C. Section 1212, make it a crime for any person knowingly and willfully to make to any department or agency of the United States any false, fictitious or fraudulent statements or representations as to any matter within its jurisdiction.

(Continued on page 2)

\*(Instructions on page 2)

Roswell Controlled Water Basin

**NM OIL CONSERVATION**  
ARTESIA DISTRICT

APR 27 2015

*RD*  
4/28/15

RECEIVED

Approval Subject to General Requirements  
& Special Stipulations Attached

SEE ATTACHED FOR  
CONDITIONS OF APPROVAL

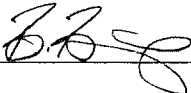
## Mewbourne Oil Company

PO Box 5270  
Hobbs, NM 88241  
(575) 393-5905

I hereby certify that I, or someone under my direct supervision, have inspected the drill site and access route proposed herein; that I am familiar with the conditions which currently exist; that I have full knowledge of State and Federal laws applicable to this operation; that the statements made in this APD package are, to the best of my knowledge, true and correct; and that the work associated with the operations proposed herein will be performed in conformity with this APD package and the terms and conditions under which it is approved. I also certify that I, or the company I represent, am responsible for the operations conducted under this application. These statements are subject to the provisions of 18 U.S.C. 1001 for the filing of false statements.

Executed this 1 day of July, 2014.

Name: Robin Terrell

Signature:  FOR Robin Terrell

Position Title: Hobbs District Manager

Address: PO Box 5270, Hobbs NM 88241

Telephone: 575-393-5905

E-mail: rterrell@mewbourne.com

District I  
1625 N. French Dr., Hobbs, NM 88240  
Phone: (575) 393-6161 Fax: (575) 393-0720  
District II  
811 S. First St., Artesia, NM 88210  
Phone: (575) 748-1283 Fax: (575) 748-9720  
District III  
1000 Rio Brazos Road, Aztec, NM 87410  
Phone: (505) 334-6178 Fax: (505) 334-6170  
District IV  
1220 S. St. Francis Dr., Santa Fe, NM 87505  
Phone: (505) 476-3460 Fax: (505) 476-3462

State of New Mexico  
Energy, Minerals & Natural Resources Department  
**OIL CONSERVATION DIVISION**  
1220 South St. Francis Dr.  
Santa Fe, NM 87505

Form C-102  
Revised August 1, 2011  
Submit one copy to appropriate  
District Office

☐ AMENDED REPORT

**WELL LOCATION AND ACREAGE DEDICATION PLAT**

|  |                     |   |                     |   |                             |                                  |                              |  |                       |
|--|---------------------|---|---------------------|---|-----------------------------|----------------------------------|------------------------------|--|-----------------------|
| <sup>1</sup> APL Number<br><b>30-015-43079</b>               |                     | <sup>2</sup> Pool Code<br><b>97565</b>                        |                     | <sup>3</sup> Pool Name<br><b>NORTH SEVEN RIVERS, GLORIETA - YESO POOL</b> |                             |                                  |                              |  |                       |
| <sup>4</sup> Property Code<br><b>314782</b>                  |                     | <sup>5</sup> Property Name<br><b>LONG DRAW 9 Y2BO FED COM</b> |                     |   |                             |                                  |                              | <sup>6</sup> Well Number<br><b>2H</b>  |                       |
| <sup>7</sup> GRID NO.<br><b>14744</b>                        |                     | <sup>8</sup> Operator Name<br><b>MEWBOURNE OIL COMPANY</b>    |                     |   |                             |                                  |                              | <sup>9</sup> Elevation<br><b>3478'</b> |                       |
| <sup>10</sup> Surface Location                               |                     |   |                     |   |                             |                                  |                              |  |                       |
| UL or lot no.<br><b>0</b>                                    | Section<br><b>4</b> | Township<br><b>20S</b>  | Range<br><b>25E</b> | Lot Idn   | Feet from the<br><b>330</b> | North/South line<br><b>SOUTH</b> | Feet From the<br><b>1790</b> | East/West line<br><b>EAST</b>          | County<br><b>EDDY</b> |
| <sup>11</sup> Bottom Hole Location If Different From Surface |                     |   |                     |   |                             |                                  |                              |  |                       |
| UL or lot no.<br><b>B</b>                                    | Section<br><b>9</b> | Township<br><b>20S</b>  | Range<br><b>25E</b> | Lot Idn   | Feet from the<br><b>530</b> | North/South line<br><b>SOUTH</b> | Feet from the<br><b>1650</b> | East/West line<br><b>EAST</b>          | County<br><b>EDDY</b> |
| <sup>12</sup> Dedicated Acres<br><b>160</b>                  |                     | <sup>13</sup> Joint or Infill                                 |                     | <sup>14</sup> Consolidation Code  |                             | <sup>15</sup> Order No.          |                              |  |                       |

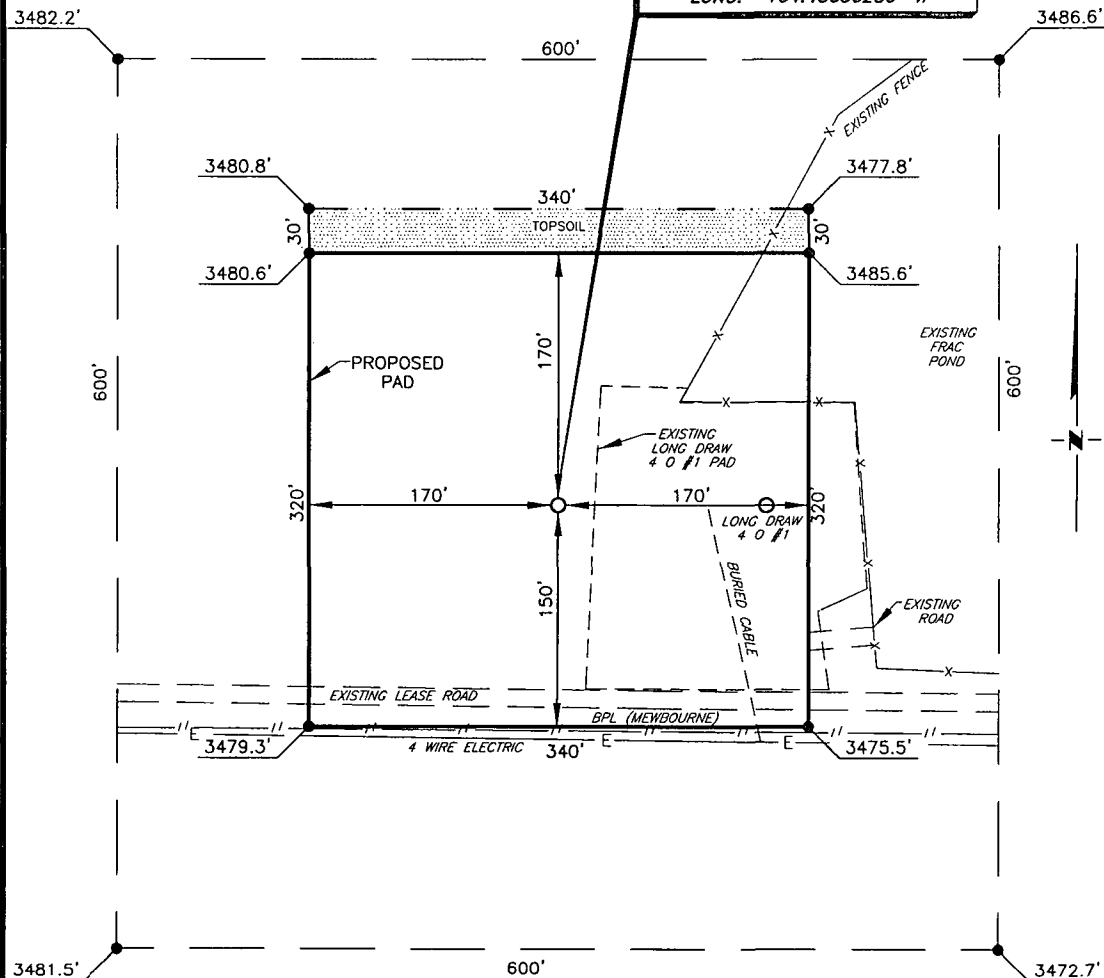
No allowable will be assigned to this completion until all interest have been consolidated or a non-standard unit has been approved by the division.

|   |   |  |  |  |
|---|---|--|--|--|
| <p><sup>16</sup> <b>CORNER DATA</b><br/>NAD 27 GRID - NM EAST</p> <p>A: FOUND BRASS CAP 1947<br/>N 575029.1 - E 449326.2</p> <p>B: FOUND BRASS CAP 1947<br/>N 577655.7 - E 449301.0</p> <p>C: FOUND BRASS CAP 1947<br/>N 580282.8 - E 449276.5</p> <p>D: FND BRASS CAP 1947<br/>N 582909.9 - E 449300.1</p> <p>E: FOUND BRASS CAP 1947<br/>N 585546.9 - E 449323.2</p> <p>F: FOUND BRASS CAP 1947 BENT<br/>N 585526.6 - E 451966.7</p> <p>G: FOUND BRASS CAP 1947<br/>N 585518.5 - E 454611.4</p> <p>H: FOUND BRASS CAP 1947 3-4<br/>N 582862.7 - E 454604.6</p> <p>I: FND BRASS CAP 1947<br/>N 580228.6 - E 454598.2</p> <p>J: FOUND BRASS CAP 1947<br/>N 577587.8 - E 454586.4</p> <p>K: FOUND BRASS CAP 1947<br/>N 574945.9 - E 454575.4</p> <p>L: FOUND BRASS CAP 1947<br/>N 574987.2 - E 451951.0</p> <p>M: FOUND BRASS CAP 1947<br/>N 580227.9 - E 451938.3</p> <p><b>GEODETIC DATA</b><br/>NAD 27 GRID - NM EAST</p> <p><b>SURFACE LOCATION</b><br/>N 580558.1 - E 452809.4</p> <p>LAT: 32.59586608° N<br/>LONG: 104.48656286° W</p> | <p><b>17 OPERATOR CERTIFICATION</b><br/>I hereby certify that the information contained herein is true and complete to the best of my knowledge and belief, and that this organization either owns a working interest or unleased mineral interest in the land including the proposed bottom hole location or has a right to drill this well at this location pursuant to a contract with an owner of such a mineral or working interest, or to a voluntary pooling agreement or a compulsory pooling order heretofore entered by the division.</p> <p><i>Bradley Bishop</i> 7-1-14<br/>Signature Date<br/><b>BRADLEY BISHOP</b><br/>Printed Name</p> <p>E-mail Address</p> |  |  |  |
|   | <p><b>18 SURVEYOR CERTIFICATION</b><br/>I hereby certify that the well location shown on this plat was plotted from field notes of actual surveys made by me or under my supervision, and that the same is true and correct to the best of my belief.</p> <p><b>6-5-14</b><br/>Date of Survey</p> <p>Signature and Seal of Professional Surveyor</p> <p><b>19680</b><br/>Certificate Number</p>   |  |  |  |

RRC - Firm No.: TX 10193838 NM 4655451 - Job No.: LS140236

MEWBOURNE OIL COMPANY

LONG DRAW 9 Y2BO FED COM #2H  
ELEVATION: 3478'  
LAT: 32.59596608° N  
LONG: 104.48656286° W



Copyright 2014 – All Rights Reserved

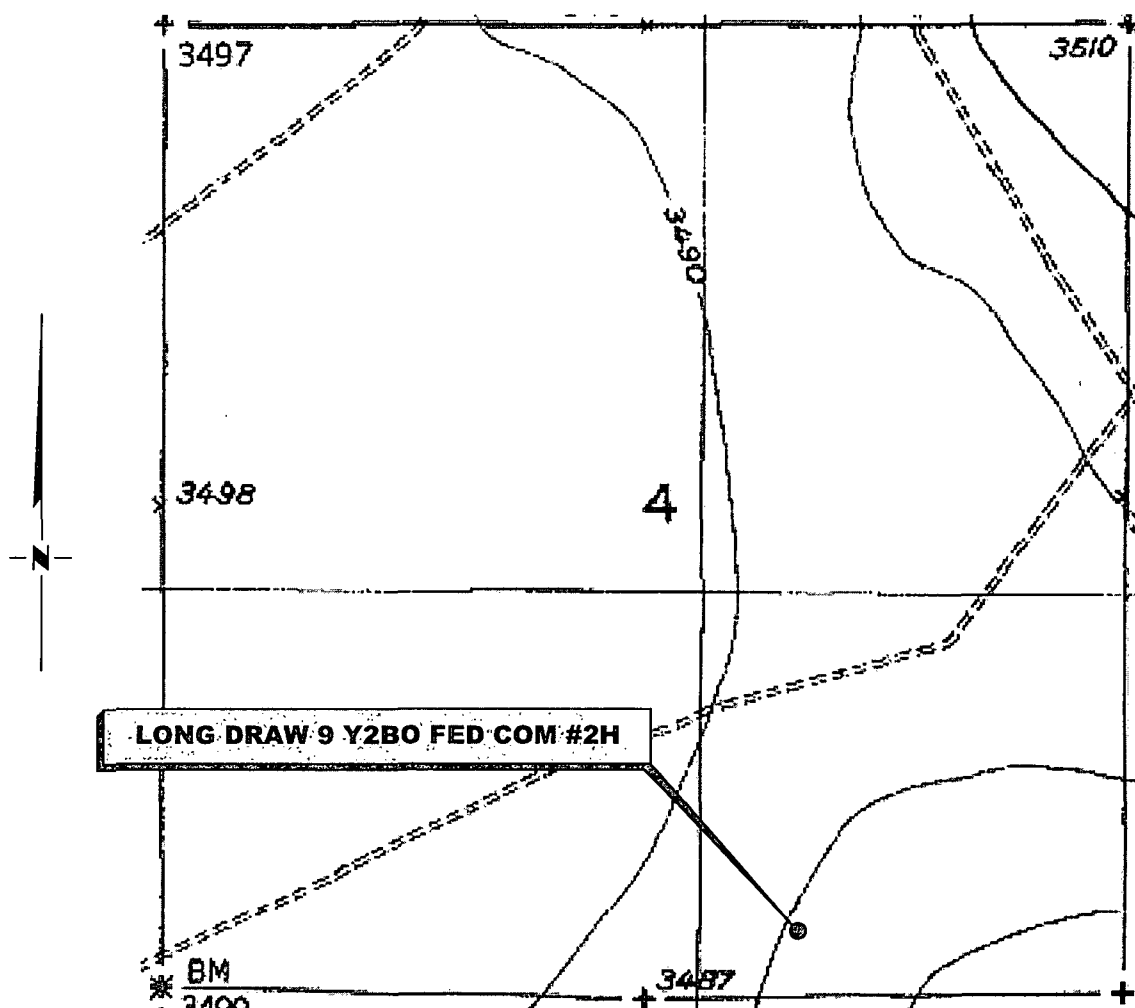
|                     |          |      |
|---------------------|----------|------|
|                     |          |      |
|                     |          |      |
|                     |          |      |
| NO.                 | REVISION | DATE |
| JOB NO.: LS140236   |          |      |
| DWG. NO.: 140236PAD |          |      |

# RRC

308 W. BROADWAY ST., HOBBS, NM 88240 (575) 964-8200

|                  |
|------------------|
| SCALE: 1" = 100' |
| DATE: 6-5-14     |
| SURVEYED BY: BK  |
| DRAWN BY: JF     |
| APPROVED BY: RMH |
| SHEET : 1 OF 1   |

# LOCATION VERIFICATION MAP



SECTION 4, TWP. 20 SOUTH, RGE. 25 EAST,  
N. M. P. M., EDDY COUNTY, NEW MEXICO

OPERATOR: Mebourne Oil Company  
LEASE: Long Draw 9 Y2B0 Fed Com  
WELL NO.: 2H  
ELEVATION: 3478'

LOCATION: 330' FSL & 1790' FEL  
CONTOUR INTERVAL: 10'  
USGS TOPO. SOURCE MAP:  
Seven Rivers, NM (1954)

Firm No.: TX 10193838 NM 4655451

Copyright 2014 - All Rights Reserved

| NO.                 | REVISION | DATE |
|---------------------|----------|------|
| JOB NO.: LS140236   |          |      |
| DWG. NO.: 140236LVM |          |      |

# RRC

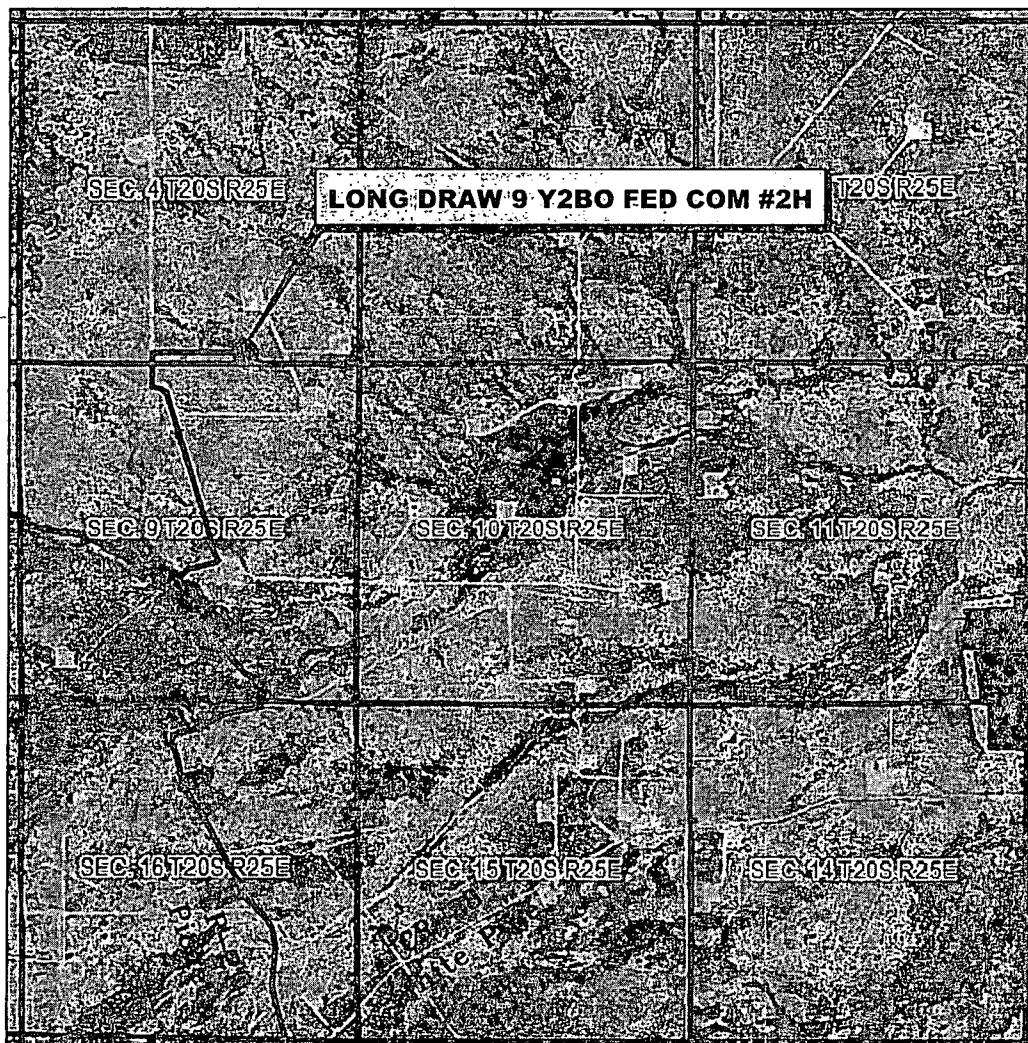
308 W. BROADWAY ST., HOBBS, NM 88240 (575) 964-8200

SCALE: 1" = 1000'  
DATE: 6-5-14  
SURVEYED BY: BK  
DRAWN BY: JF  
APPROVED BY: RMH  
SHEET : 1 OF 1

"EXHIBIT 3C"

# VICINITY MAP

NOT TO SCALE



*SECTION 4, TWP. 20 SOUTH, RGE. 25 EAST,  
N. M. P. M., EDDY COUNTY, NEW MEXICO*

OPERATOR: Mewbourne Oil Company  
LEASE: Long Draw 9 Y2BO Fed Com  
WELL NO.: 2H

LOCATION: 330' FSL & 1790' FEL  
ELEVATION: 3478'

Firm No.: TX 10193838 NM 4655451

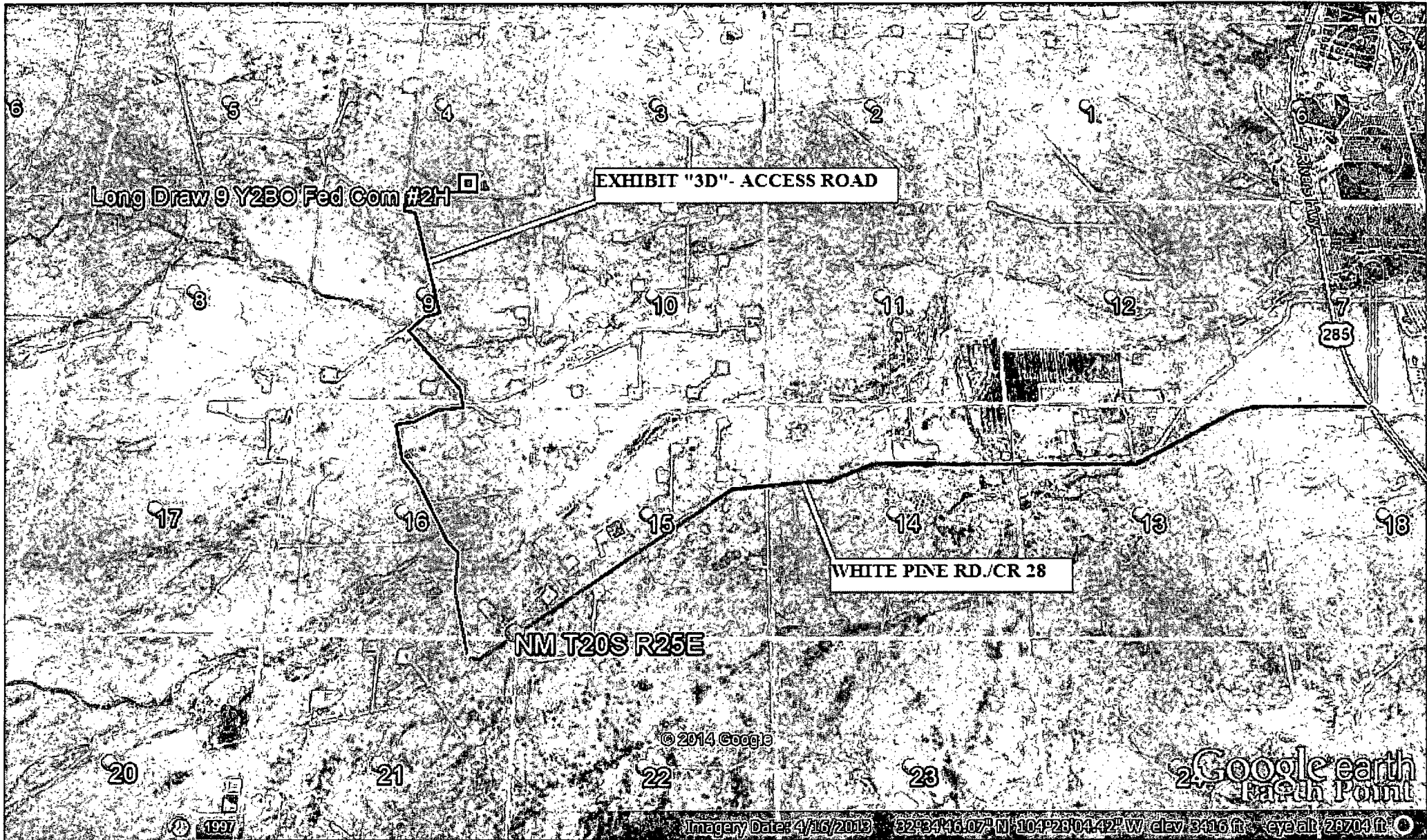
Copyright 2014 - All Rights Reserved

|                    |          |      |
|--------------------|----------|------|
|                    |          |      |
|                    |          |      |
|                    |          |      |
| NO.                | REVISION | DATE |
| JOB NO.: LS140236  |          |      |
| DWG. NO.: 140236VM |          |      |

# RRC

308 W. BROADWAY ST., HOBBS, NM 88240 (575) 964-8200

|                  |
|------------------|
| SCALE: N.T.S.    |
| DATE: 6/5/14     |
| SURVEYED BY: BK  |
| DRAWN BY: JC     |
| APPROVED BY: RMH |
| SHEET : 1 OF 1   |



Long Draw 9 Y2BO Fed Com #2H

EXHIBIT "3D"- ACCESS ROAD

WHITE PINE RD/CR 28

NM T20S R25E

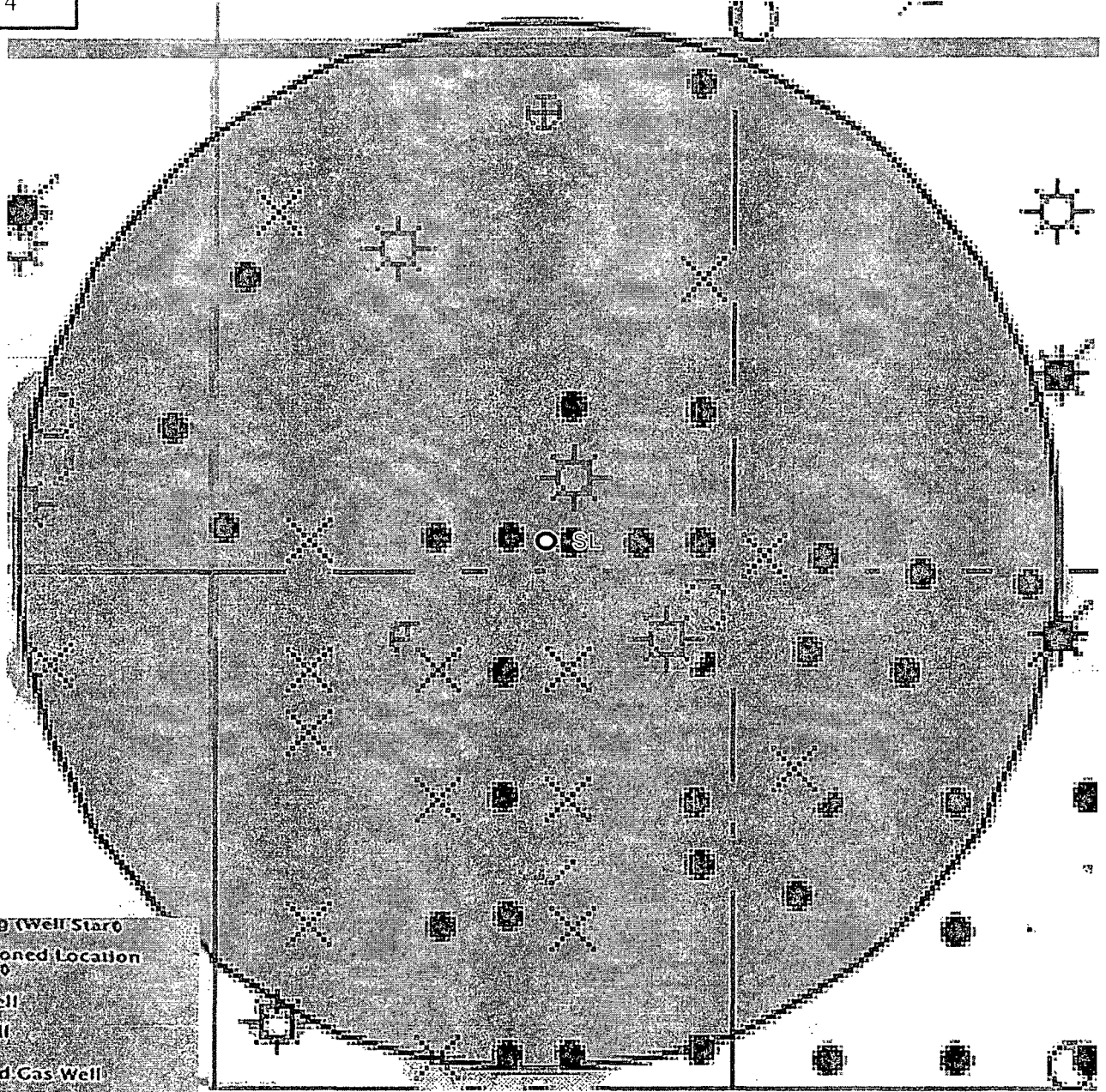
© 2014 Google

Google earth  
Earth Point

Imagery Date: 4/16/2013 32°34'16.07" N -104°28'04.42" W elev 3416 ft eye alt 28704 ft



Exhibit "4"

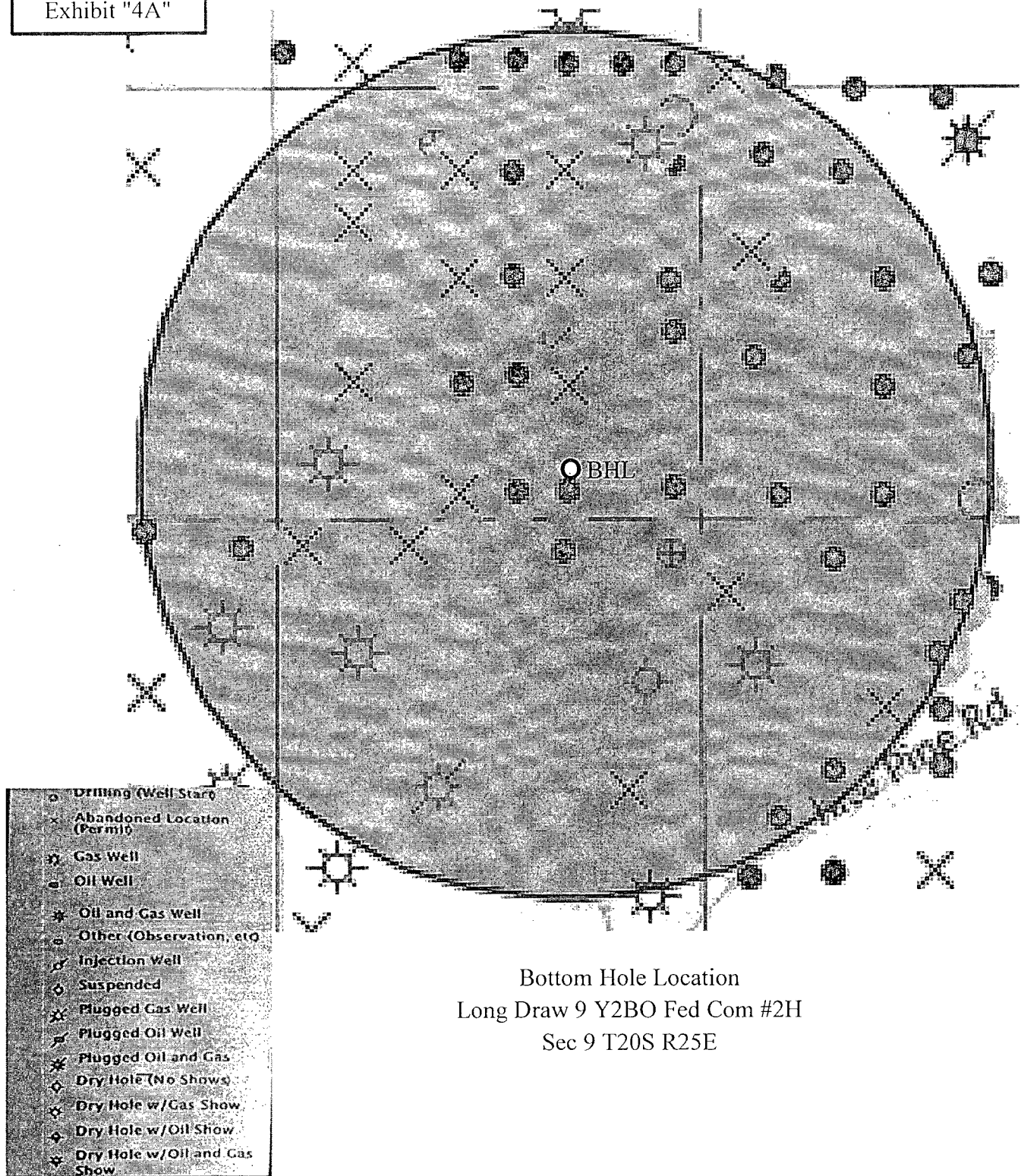


Surface Location  
Long Draw 9 Y2BO Fed Com #2H  
Sec 4 T20S R25E

- Drilling (Well Start)
- ✕ Abandoned Location (Permit)
- ✱ Gas Well
- Oil Well
- ✱ Oil and Gas Well
- Other (Observation, etc)
- ✱ Injection Well
- ◇ Suspended
- ✱ Plugged Gas Well
- ✱ Plugged Oil Well
- ✱ Plugged Oil and Gas
- ◇ Dry Hole (No Shows)
- ✱ Dry Hole w/Gas Show
- ◇ Dry Hole w/Oil Show
- ✱ Dry Hole w/Oil and Gas Show



Exhibit "4A"



Bottom Hole Location  
Long Draw 9 Y2BO Fed Com #2H  
Sec 9 T20S R25E

**Drilling Program**  
**Mewbourne Oil Company**  
Long Draw 9 Y2BO Fed Com #2H  
330' FSL & 1790' FEL  
Sec. 4 T20S R25E  
Eddy County, New Mexico

**1. The estimated (TVD) tops of geological markers are as follows:**

|            |       |
|------------|-------|
| Grayburg   | 490'  |
| San Andres | 780'  |
| *Glorieta  | 2335' |
| *Yeso      | 2490' |

**2. Estimated depths of anticipated fresh water, oil, or gas:**

|              |   |
|--------------|---|
| Water        | Fresh water is anticipated @ 175' and will be protected by setting surface casing at 805' and cementing to surface. |
| Hydrocarbons | Oil and gas are anticipated in the above (*) formations. These zones will be protected by casing as necessary.      |

**3. Pressure control equipment:**

A 2000# WP Annular will be installed after running 9 5/8" & 7" casing. Pressure tests will be conducted prior to drilling out under all casing strings. BOP controls will be installed prior to drilling under surface casing and will remain in use until completion of drilling operations. BOPs will be inspected and operated as recommended in Onshore Order #2. A Kelly cock and a sub equipped with a full opening valve sized to fit the drill pipe and collars will be available on the rig floor in the open position when the Kelly is not in use.

Will test the 9 5/8" & 7" BOPE to 1500# with a third party testing company before drilling below each shoe, but will test again, if needed, in 30 days from the 1<sup>st</sup> test as per BLM Onshore Oil and Gas Order #2.

*See  
COA  
test to  
2,000 psi*

**4. Drilling Program:**

MOC proposes to drill a vertical wellbore to 2100' & kick off to horizontal @ 2769' TVD. The well will be drilled to 7540' MD (2813' TVD). See attached directional plan.

**5. Proposed casing and cementing program:**

**A. Casing Program:**

| <u>Hole Size</u> | <u>Casing</u> | <u>Wt/Ft.</u> | <u>Grade</u> | <u>Depth</u>   | <u>Jt Type</u> |
|------------------|---------------|---------------|--------------|----------------|----------------|
| 12 1/4"          | 9 5/8" (new)  | 36#           | J55          | 0'-805'        | LT&C           |
| 8 3/4"           | 7" (new)      | 26#           | J55          | 0-2100' MD     | LT&C           |
| 8 3/4"           | 7" (new)      | 26#           | J55          | 2100'-3144' MD | BT&C           |
| 6 1/8"           | 4 1/2" (new)  | 11.6#         | J55          | 2944'-TD       | LT&C           |

Minimum casing design factors: Collapse 1.125, Burst 1.0, Tensile strength 1.8.

\*Subject to availability of casing.

**B. Cementing Program:**

- i. Surface Casing: 400 sacks Class "C" w/2% CaCl<sub>2</sub>. Yield at 1.34 cuft/sk. Mix @ 6.34gal/sk FW. Cmt circulated to surface w/100% excess.
- ii. Production Casing: 450 sacks Class "C" cement w/salt and fluid loss additives. Yield at 1.34 cuft/sk. Mix @ 6.34 gal/sk FW. Cmt circulated to surface w/25% excess.

*See  
COA*

- iii. Production Liner: This will be a Packer/Port completion from TD up inside 7" casing with packer type liner hanger.

\*Referring to above blends of lite cement: (wt% fly ash : wt% cement : wt% bentonite of the total of first two numbers). Generic names of additives are used since the availability of specific company and products are unknown at this time.

*\*Mewbourne Oil Company reserves the right to change cement designs as hole conditions may warrant.*

#### 6. Mud Program:

| <u>Interval</u> | <u>Type System</u> | <u>Weight</u> | <u>Viscosity</u> | <u>Fluid Loss</u> |
|-----------------|--------------------|---------------|------------------|-------------------|
| 0'-805'         | FW spud mud        | 8.6-9.0       | 32-34            | NA                |
| 805'-2100'(KOP) | FW mud             | 8.6-8.8       | 28-30            | NA                |
| 2100'- TD       | FW w/Polymer       | 8.5-12.0      | 32-35            | 15                |

\*Visual mud monitoring system shall be in place to detect volume changes indicating loss or gain of circulation fluid volume. Sufficient mud materials will be kept on location at all times to combat abnormal conditions.

#### 7. Evaluation Program:

Samples: 10' samples from surface casing to TD  
Logging: GR, CNL & Gyro from KOP-100' (2000') to surface and GR from 2000 to TD.

#### 8. Downhole Conditions

|                                  |   |
|----------------------------------|---|
| Zones of abnormal pressure:      | None anticipated  |
| Zones of lost circulation:       | Anticipated in surface hole   |
| Maximum bottom hole temperature: | 100 degree F  |
| Maximum bottom hole pressure:    | 8.3 lbs/gal gradient or less (2813' x .43668 = 1228.38 psi per foot.) |

#### 9. Anticipated Starting Date:

Mewbourne Oil Company intends to drill this well as soon as possible after receiving approval with approximately 45 days involved in drilling operations and an additional 10 days involved in completion operations on the project.

# **Mewbourne Oil Company**

Eddy County, New Mexico

Long Draw 9 Y2BO Fed Com 2H

Sec 4, 20S, 25E

SL: 330' FSL & 1790' FEL, BHL: 530 FSL & 1650 FEL (Sec 9)

Plan: Design #1

## **Standard Planning Report**

30 June, 2014

# Planning Report

**Database:** Hobbs  
**Company:** Mewbourne Oil Company  
**Project:** Eddy County, New Mexico  
**Site:** Long Draw 9 Y2BO Fed Com 2H  
**Well:** Sec 4, 20S, 25E  
**Wellbore:** SL: 330' FSL & 1790' FEL, BHL: 530 FSL & 1650 FEL (Sec 9)  
**Design:** Design #1

**Local Co-ordinate Reference:** Site Long Draw 9 Y2BO Fed Com 2H  
**TVD Reference:** WELL @ 3498.0usft (Original Well Elev)  
**MD Reference:** WELL @ 3498.0usft (Original Well Elev)  
**North Reference:** Grid  
**Survey Calculation Method:** Minimum Curvature

**Project:** Eddy County, New Mexico  
**Map System:** US State Plane 1927 (Exact solution) **System Datum:** Mean Sea Level  
**Geo Datum:** NAD 1927 (NADCON CONUS)  
**Map Zone:** New Mexico East 3001

**Site:** Long Draw 9 Y2BO Fed Com 2H  
**Site Position:** **Northing:** 580,558.10 usft **Latitude:** 32° 35' 45.478 N  
**From:** Map **Easting:** 452,809.40 usft **Longitude:** 104° 29' 11.627 W  
**Position Uncertainty:** 0.0 usft **Slot Radius:** 13-3/16 " **Grid Convergence:** -0.08 °

**Well:** Sec 4, 20S, 25E  
**Well Position** **+N/-S** 0.0 usft **Northing:** 580,558.10 usft **Latitude:** 32° 35' 45.478 N  
**+E/-W** 0.0 usft **Easting:** 452,809.40 usft **Longitude:** 104° 29' 11.627 W  
**Position Uncertainty** 0.0 usft **Wellhead Elevation:** 3,498.0 usft **Ground Level:** 3,478.0 usft

**Wellbore:** SL: 330' FSL & 1790' FEL, BHL: 530 FSL & 1650' FEL (Sec 9)

| Magnetics | Model Name | Sample Date | Declination (°) | Dip Angle (°) | Field Strength (nT) |
|-----------|------------|-------------|-----------------|---------------|---------------------|
|           | IGRF2010   | 6/16/2014   | 7.67            | 60.30         | 48,438              |

**Design:** Design #1

## Audit Notes:

**Version:** **Phase:** PROTOTYPE **Tie On Depth:** 0.0

| Vertical Section: | Depth From (TVD)<br>(usft) | +N/-S<br>(usft) | +E/-W<br>(usft) | Direction<br>(°) |
|-------------------|----------------------------|-----------------|-----------------|------------------|
|                   | 0.0                        | 0.0             | 0.0             | 178.65           |

## Plan Sections

| Measured Depth<br>(usft) | Inclination<br>(°) | Azimuth<br>(°) | Vertical Depth<br>(usft) | +N/-S<br>(usft) | +E/-W<br>(usft) | Dogleg Rate<br>(°/100usft) | Build Rate<br>(°/100usft) | Turn Rate<br>(°/100usft) | TFO<br>(°) | Target                    |
|--------------------------|--------------------|----------------|--------------------------|-----------------|-----------------|----------------------------|---------------------------|--------------------------|------------|---------------------------|
| 0.0                      | 0.00               | 0.00           | 0.0                      | 0.0             | 0.0             | 0.00                       | 0.00                      | 0.00                     | 0.00       |                           |
| 2,100.0                  | 0.00               | 0.00           | 2,100.0                  | 0.0             | 0.0             | 0.00                       | 0.00                      | 0.00                     | 0.00       |                           |
| 3,144.2                  | 89.43              | 178.65         | 2,769.0                  | -662.2          | 15.6            | 8.56                       | 8.56                      | 0.00                     | 178.65     |                           |
| 7,539.9                  | 89.43              | 178.65         | 2,813.0                  | -5,056.4        | 118.8           | 0.00                       | 0.00                      | 0.00                     | 0.00       | PBHL (530 FSL & 1650 FEL) |

# Planning Report

|           |   |                              |  |
|-----------|---|------------------------------|--|
| Database: | Hobbs   | Local Co-ordinate Reference: | Site Long Draw 9 Y2BO Fed Com 2H       |
| Company:  | Mewbourne Oil Company                                     | TVD Reference:               | WELL @ 3498.0usft (Original Well Elev) |
| Project:  | Eddy County, New Mexico                                   | MD Reference:                | WELL @ 3498.0usft (Original Well Elev) |
| Site:     | Long Draw 9 Y2BO Fed Com 2H                               | North Reference:             | Grid                                   |
| Well:     | Sec 4, 20S, 25E   | Survey Calculation Method:   | Minimum Curvature                      |
| Wellbore: | SL: 330' FSL & 1790' FEL, BHL: 530 FSL & 1650 FEL (Sec 9) |                              |  |
| Design:   | Design #1   |                              |  |

| Planned Survey                   |                 |             |                       |              |              |                         |                         |                        |                       |  |
|----------------------------------|-----------------|-------------|-----------------------|--------------|--------------|-------------------------|-------------------------|------------------------|-----------------------|--|
| Measured Depth (usft)            | Inclination (°) | Azimuth (°) | Vertical Depth (usft) | +N/-S (usft) | +E/-W (usft) | Vertical Section (usft) | Dogleg Rate (°/100usft) | Build Rate (°/100usft) | Turn Rate (°/100usft) |  |
| 0.0                              | 0.00            | 0.00        | 0.0                   | 0.0          | 0.0          | 0.0                     | 0.00                    | 0.00                   | 0.00                  |  |
| 100.0                            | 0.00            | 0.00        | 100.0                 | 0.0          | 0.0          | 0.0                     | 0.00                    | 0.00                   | 0.00                  |  |
| 200.0                            | 0.00            | 0.00        | 200.0                 | 0.0          | 0.0          | 0.0                     | 0.00                    | 0.00                   | 0.00                  |  |
| 300.0                            | 0.00            | 0.00        | 300.0                 | 0.0          | 0.0          | 0.0                     | 0.00                    | 0.00                   | 0.00                  |  |
| 400.0                            | 0.00            | 0.00        | 400.0                 | 0.0          | 0.0          | 0.0                     | 0.00                    | 0.00                   | 0.00                  |  |
| 500.0                            | 0.00            | 0.00        | 500.0                 | 0.0          | 0.0          | 0.0                     | 0.00                    | 0.00                   | 0.00                  |  |
| 600.0                            | 0.00            | 0.00        | 600.0                 | 0.0          | 0.0          | 0.0                     | 0.00                    | 0.00                   | 0.00                  |  |
| 700.0                            | 0.00            | 0.00        | 700.0                 | 0.0          | 0.0          | 0.0                     | 0.00                    | 0.00                   | 0.00                  |  |
| 800.0                            | 0.00            | 0.00        | 800.0                 | 0.0          | 0.0          | 0.0                     | 0.00                    | 0.00                   | 0.00                  |  |
| 900.0                            | 0.00            | 0.00        | 900.0                 | 0.0          | 0.0          | 0.0                     | 0.00                    | 0.00                   | 0.00                  |  |
| 1,000.0                          | 0.00            | 0.00        | 1,000.0               | 0.0          | 0.0          | 0.0                     | 0.00                    | 0.00                   | 0.00                  |  |
| 1,100.0                          | 0.00            | 0.00        | 1,100.0               | 0.0          | 0.0          | 0.0                     | 0.00                    | 0.00                   | 0.00                  |  |
| 1,200.0                          | 0.00            | 0.00        | 1,200.0               | 0.0          | 0.0          | 0.0                     | 0.00                    | 0.00                   | 0.00                  |  |
| 1,300.0                          | 0.00            | 0.00        | 1,300.0               | 0.0          | 0.0          | 0.0                     | 0.00                    | 0.00                   | 0.00                  |  |
| 1,400.0                          | 0.00            | 0.00        | 1,400.0               | 0.0          | 0.0          | 0.0                     | 0.00                    | 0.00                   | 0.00                  |  |
| 1,500.0                          | 0.00            | 0.00        | 1,500.0               | 0.0          | 0.0          | 0.0                     | 0.00                    | 0.00                   | 0.00                  |  |
| 1,600.0                          | 0.00            | 0.00        | 1,600.0               | 0.0          | 0.0          | 0.0                     | 0.00                    | 0.00                   | 0.00                  |  |
| 1,700.0                          | 0.00            | 0.00        | 1,700.0               | 0.0          | 0.0          | 0.0                     | 0.00                    | 0.00                   | 0.00                  |  |
| 1,800.0                          | 0.00            | 0.00        | 1,800.0               | 0.0          | 0.0          | 0.0                     | 0.00                    | 0.00                   | 0.00                  |  |
| 1,900.0                          | 0.00            | 0.00        | 1,900.0               | 0.0          | 0.0          | 0.0                     | 0.00                    | 0.00                   | 0.00                  |  |
| 2,000.0                          | 0.00            | 0.00        | 2,000.0               | 0.0          | 0.0          | 0.0                     | 0.00                    | 0.00                   | 0.00                  |  |
| 2,100.0                          | 0.00            | 0.00        | 2,100.0               | 0.0          | 0.0          | 0.0                     | 0.00                    | 0.00                   | 0.00                  |  |
| KOP @ 2100                       |                 |             |                       |              |              |                         |                         |                        |                       |  |
| 2,200.0                          | 8.56            | 178.65      | 2,199.6               | -7.5         | 0.2          | 7.5                     | 8.56                    | 8.56                   | 0.00                  |  |
| 2,300.0                          | 17.13           | 178.65      | 2,297.0               | -29.7        | 0.7          | 29.7                    | 8.56                    | 8.56                   | 0.00                  |  |
| 2,400.0                          | 25.69           | 178.65      | 2,390.0               | -66.1        | 1.6          | 66.1                    | 8.56                    | 8.56                   | 0.00                  |  |
| 2,500.0                          | 34.26           | 178.65      | 2,476.6               | -116.0       | 2.7          | 116.1                   | 8.56                    | 8.56                   | 0.00                  |  |
| 2,600.0                          | 42.82           | 178.65      | 2,554.7               | -178.3       | 4.2          | 178.3                   | 8.56                    | 8.56                   | 0.00                  |  |
| 2,700.0                          | 51.38           | 178.65      | 2,622.7               | -251.4       | 5.9          | 251.5                   | 8.56                    | 8.56                   | 0.00                  |  |
| 2,800.0                          | 59.95           | 178.65      | 2,679.1               | -333.9       | 7.8          | 334.0                   | 8.56                    | 8.56                   | 0.00                  |  |
| 2,900.0                          | 68.51           | 178.65      | 2,722.5               | -423.8       | 10.0         | 424.0                   | 8.56                    | 8.56                   | 0.00                  |  |
| 3,000.0                          | 77.08           | 178.65      | 2,752.1               | -519.3       | 12.2         | 519.4                   | 8.56                    | 8.56                   | 0.00                  |  |
| 3,100.0                          | 85.64           | 178.65      | 2,767.1               | -618.0       | 14.5         | 618.2                   | 8.56                    | 8.56                   | 0.00                  |  |
| 3,144.3                          | 89.43           | 178.65      | 2,769.0               | -662.2       | 15.6         | 662.4                   | 8.55                    | 8.55                   | 0.00                  |  |
| LP @ 3144 MD(332 FNL & 1774 FEL) |                 |             |                       |              |              |                         |                         |                        |                       |  |
| 3,200.0                          | 89.43           | 178.65      | 2,769.6               | -717.9       | 16.9         | 718.1                   | 0.00                    | 0.00                   | 0.00                  |  |
| 3,300.0                          | 89.43           | 178.65      | 2,770.6               | -817.9       | 19.2         | 818.1                   | 0.00                    | 0.00                   | 0.00                  |  |
| 3,400.0                          | 89.43           | 178.65      | 2,771.6               | -917.9       | 21.6         | 918.1                   | 0.00                    | 0.00                   | 0.00                  |  |
| 3,500.0                          | 89.43           | 178.65      | 2,772.6               | -1,017.8     | 23.9         | 1,018.1                 | 0.00                    | 0.00                   | 0.00                  |  |
| 3,600.0                          | 89.43           | 178.65      | 2,773.6               | -1,117.8     | 26.3         | 1,118.1                 | 0.00                    | 0.00                   | 0.00                  |  |
| 3,700.0                          | 89.43           | 178.65      | 2,774.6               | -1,217.8     | 28.6         | 1,218.1                 | 0.00                    | 0.00                   | 0.00                  |  |
| 3,800.0                          | 89.43           | 178.65      | 2,775.6               | -1,317.7     | 31.0         | 1,318.1                 | 0.00                    | 0.00                   | 0.00                  |  |
| 3,900.0                          | 89.43           | 178.65      | 2,776.6               | -1,417.7     | 33.3         | 1,418.1                 | 0.00                    | 0.00                   | 0.00                  |  |
| 4,000.0                          | 89.43           | 178.65      | 2,777.6               | -1,517.7     | 35.7         | 1,518.1                 | 0.00                    | 0.00                   | 0.00                  |  |
| 4,100.0                          | 89.43           | 178.65      | 2,778.6               | -1,617.6     | 38.0         | 1,618.1                 | 0.00                    | 0.00                   | 0.00                  |  |
| 4,200.0                          | 89.43           | 178.65      | 2,779.6               | -1,717.6     | 40.4         | 1,718.1                 | 0.00                    | 0.00                   | 0.00                  |  |
| 4,300.0                          | 89.43           | 178.65      | 2,780.6               | -1,817.6     | 42.7         | 1,818.1                 | 0.00                    | 0.00                   | 0.00                  |  |
| 4,400.0                          | 89.43           | 178.65      | 2,781.6               | -1,917.5     | 45.1         | 1,918.1                 | 0.00                    | 0.00                   | 0.00                  |  |
| 4,500.0                          | 89.43           | 178.65      | 2,782.6               | -2,017.5     | 47.4         | 2,018.1                 | 0.00                    | 0.00                   | 0.00                  |  |
| 4,600.0                          | 89.43           | 178.65      | 2,783.6               | -2,117.5     | 49.8         | 2,118.0                 | 0.00                    | 0.00                   | 0.00                  |  |
| 4,700.0                          | 89.43           | 178.65      | 2,784.6               | -2,217.4     | 52.1         | 2,218.0                 | 0.00                    | 0.00                   | 0.00                  |  |
| 4,800.0                          | 89.43           | 178.65      | 2,785.6               | -2,317.4     | 54.5         | 2,318.0                 | 0.00                    | 0.00                   | 0.00                  |  |
| 4,900.0                          | 89.43           | 178.65      | 2,786.6               | -2,417.4     | 56.8         | 2,418.0                 | 0.00                    | 0.00                   | 0.00                  |  |



# Planning Report

|           |   |                              |  |
|-----------|---|------------------------------|--|
| Database: | Hobbs   | Local Co-ordinate Reference: | Site Long Draw 9 Y2BO Fed Com 2H       |
| Company:  | Mewbourne Oil Company                                       | TVD Reference:               | WELL @ 3498.0usft (Original Well Elev) |
| Project:  | Eddy County, New Mexico                                     | MD Reference:                | WELL @ 3498.0usft (Original Well Elev) |
| Site:     | Long Draw 9 Y2BO Fed Com 2H                                 | North Reference:             | Grid                                   |
| Well:     | Sec 4, 20S, 25E   | Survey Calculation Method:   | Minimum Curvature                      |
| Wellbore: | SL: 330' FSL & 1790' FEL, BHL: 530' FSL & 1650' FEL (Sec 9) |                              |  |
| Design:   | Design #1   |                              |  |

| Planned Survey                     |                 |             |                       |              |              |                         |                         |                        |                       |  |
|------------------------------------|-----------------|-------------|-----------------------|--------------|--------------|-------------------------|-------------------------|------------------------|-----------------------|--|
| Measured Depth (usft)              | Inclination (°) | Azimuth (°) | Vertical Depth (usft) | +N/-S (usft) | +E/-W (usft) | Vertical Section (usft) | Dogleg Rate (°/100usft) | Build Rate (°/100usft) | Turn Rate (°/100usft) |  |
| 5,000.0                            | 89.43           | 178.65      | 2,787.6               | -2,517.3     | 59.2         | 2,518.0                 | 0.00                    | 0.00                   | 0.00                  |  |
| 5,100.0                            | 89.43           | 178.65      | 2,788.6               | -2,617.3     | 61.5         | 2,618.0                 | 0.00                    | 0.00                   | 0.00                  |  |
| 5,200.0                            | 89.43           | 178.65      | 2,789.6               | -2,717.3     | 63.9         | 2,718.0                 | 0.00                    | 0.00                   | 0.00                  |  |
| 5,300.0                            | 89.43           | 178.65      | 2,790.6               | -2,817.2     | 66.2         | 2,818.0                 | 0.00                    | 0.00                   | 0.00                  |  |
| 5,400.0                            | 89.43           | 178.65      | 2,791.6               | -2,917.2     | 68.6         | 2,918.0                 | 0.00                    | 0.00                   | 0.00                  |  |
| 5,500.0                            | 89.43           | 178.65      | 2,792.6               | -3,017.2     | 70.9         | 3,018.0                 | 0.00                    | 0.00                   | 0.00                  |  |
| 5,600.0                            | 89.43           | 178.65      | 2,793.6               | -3,117.1     | 73.3         | 3,118.0                 | 0.00                    | 0.00                   | 0.00                  |  |
| 5,700.0                            | 89.43           | 178.65      | 2,794.6               | -3,217.1     | 75.6         | 3,218.0                 | 0.00                    | 0.00                   | 0.00                  |  |
| 5,800.0                            | 89.43           | 178.65      | 2,795.6               | -3,317.1     | 78.0         | 3,318.0                 | 0.00                    | 0.00                   | 0.00                  |  |
| 5,900.0                            | 89.43           | 178.65      | 2,796.6               | -3,417.0     | 80.3         | 3,418.0                 | 0.00                    | 0.00                   | 0.00                  |  |
| 6,000.0                            | 89.43           | 178.65      | 2,797.6               | -3,517.0     | 82.7         | 3,518.0                 | 0.00                    | 0.00                   | 0.00                  |  |
| 6,100.0                            | 89.43           | 178.65      | 2,798.6               | -3,617.0     | 85.0         | 3,618.0                 | 0.00                    | 0.00                   | 0.00                  |  |
| 6,200.0                            | 89.43           | 178.65      | 2,799.6               | -3,716.9     | 87.4         | 3,718.0                 | 0.00                    | 0.00                   | 0.00                  |  |
| 6,300.0                            | 89.43           | 178.65      | 2,800.6               | -3,816.9     | 89.7         | 3,818.0                 | 0.00                    | 0.00                   | 0.00                  |  |
| 6,400.0                            | 89.43           | 178.65      | 2,801.6               | -3,916.9     | 92.1         | 3,918.0                 | 0.00                    | 0.00                   | 0.00                  |  |
| 6,500.0                            | 89.43           | 178.65      | 2,802.6               | -4,016.8     | 94.4         | 4,018.0                 | 0.00                    | 0.00                   | 0.00                  |  |
| 6,600.0                            | 89.43           | 178.65      | 2,803.6               | -4,116.8     | 96.7         | 4,117.9                 | 0.00                    | 0.00                   | 0.00                  |  |
| 6,700.0                            | 89.43           | 178.65      | 2,804.6               | -4,216.8     | 99.1         | 4,217.9                 | 0.00                    | 0.00                   | 0.00                  |  |
| 6,800.0                            | 89.43           | 178.65      | 2,805.6               | -4,316.7     | 101.4        | 4,317.9                 | 0.00                    | 0.00                   | 0.00                  |  |
| 6,900.0                            | 89.43           | 178.65      | 2,806.6               | -4,416.7     | 103.8        | 4,417.9                 | 0.00                    | 0.00                   | 0.00                  |  |
| 7,000.0                            | 89.43           | 178.65      | 2,807.6               | -4,516.7     | 106.1        | 4,517.9                 | 0.00                    | 0.00                   | 0.00                  |  |
| 7,100.0                            | 89.43           | 178.65      | 2,808.6               | -4,616.6     | 108.5        | 4,617.9                 | 0.00                    | 0.00                   | 0.00                  |  |
| 7,200.0                            | 89.43           | 178.65      | 2,809.6               | -4,716.6     | 110.8        | 4,717.9                 | 0.00                    | 0.00                   | 0.00                  |  |
| 7,300.0                            | 89.43           | 178.65      | 2,810.6               | -4,816.6     | 113.2        | 4,817.9                 | 0.00                    | 0.00                   | 0.00                  |  |
| 7,400.0                            | 89.43           | 178.65      | 2,811.6               | -4,916.5     | 115.5        | 4,917.9                 | 0.00                    | 0.00                   | 0.00                  |  |
| 7,500.0                            | 89.43           | 178.65      | 2,812.6               | -5,016.5     | 117.9        | 5,017.9                 | 0.00                    | 0.00                   | 0.00                  |  |
| 7,539.9                            | 89.43           | 178.65      | 2,813.0               | -5,056.4     | 118.8        | 5,057.8                 | 0.00                    | 0.00                   | 0.00                  |  |
| PBHL (530' FSL & 1650' FEL, Sec 9) |                 |             |                       |              |              |                         |                         |                        |                       |  |

| Design Targets            |               |              |            |              |              |                 |                |                  |                   |  |
|---------------------------|---------------|--------------|------------|--------------|--------------|-----------------|----------------|------------------|-------------------|--|
| Target Name               | Dip Angle (°) | Dip Dir. (°) | TVD (usft) | +N/-S (usft) | +E/-W (usft) | Northing (usft) | Easting (usft) | Latitude         | Longitude         |  |
| KOP @ 2100                | 0.00          | 360.00       | 2,100.0    | 0.0          | 0.0          | 580,558.10      | 452,809.40     | 32° 35' 45.478 N | 104° 29' 11.627 W |  |
| - hit/miss target         |               |              |            |              |              |                 |                |                  |                   |  |
| - Shape                   |               |              |            |              |              |                 |                |                  |                   |  |
| - plan hits target center |               |              |            |              |              |                 |                |                  |                   |  |
| - Point                   |               |              |            |              |              |                 |                |                  |                   |  |
| LP @ 3144 MD(332 FNL)     | 0.00          | 360.00       | 2,769.0    | -662.2       | 15.6         | 579,895.90      | 452,825.00     | 32° 35' 38.925 N | 104° 29' 11.433 W |  |
| - plan hits target center |               |              |            |              |              |                 |                |                  |                   |  |
| - Point                   |               |              |            |              |              |                 |                |                  |                   |  |
| PBHL (530 FSL & 1650'     | 0.00          | 360.00       | 2,813.0    | -5,056.4     | 118.8        | 575,501.70      | 452,928.23     | 32° 34' 55.443 N | 104° 29' 10.153 W |  |
| - plan hits target center |               |              |            |              |              |                 |                |                  |                   |  |
| - Point                   |               |              |            |              |              |                 |                |                  |                   |  |

# 13 5/8" 2M BOPE & Closed Loop Equipment Schematic

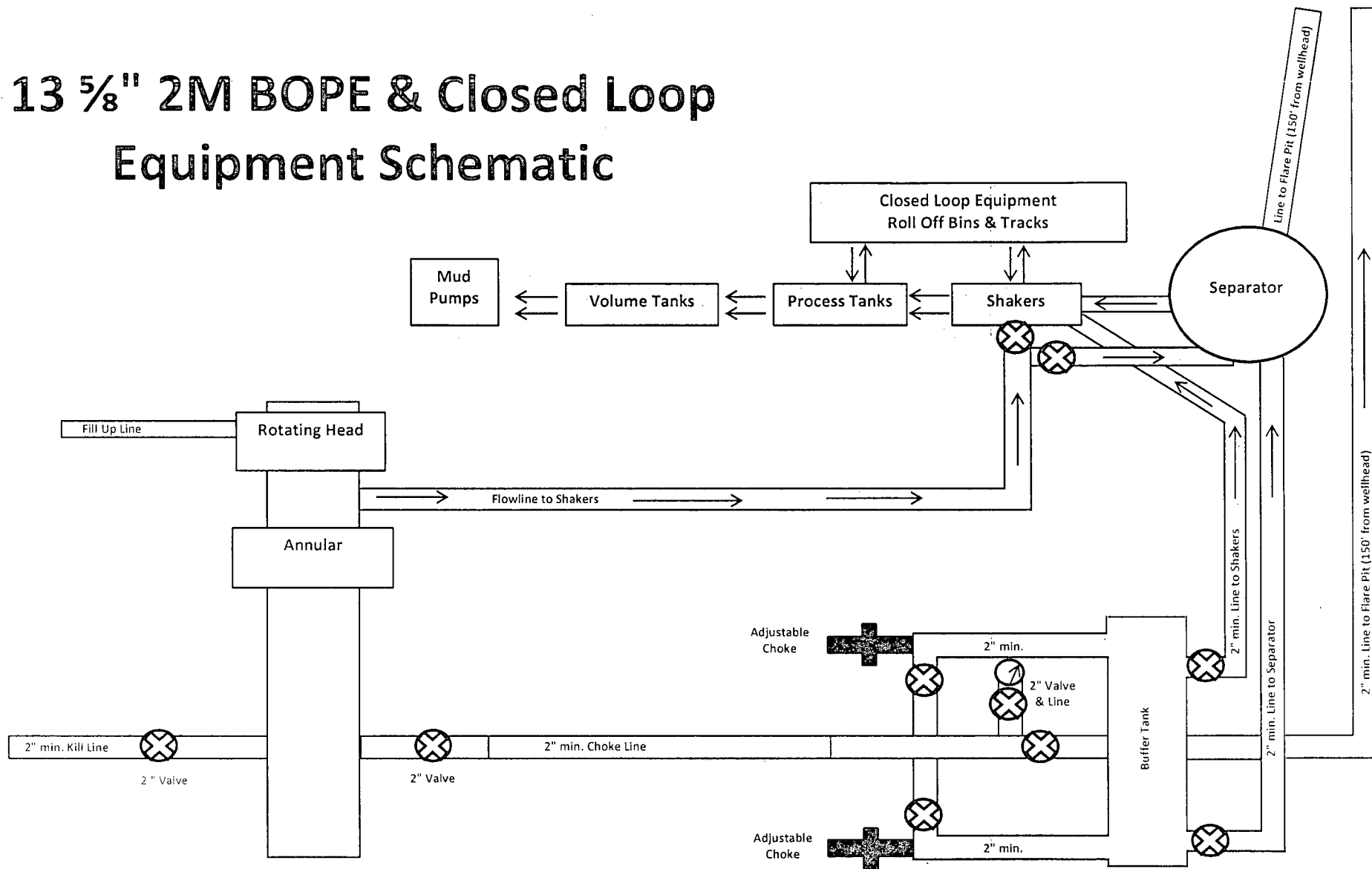
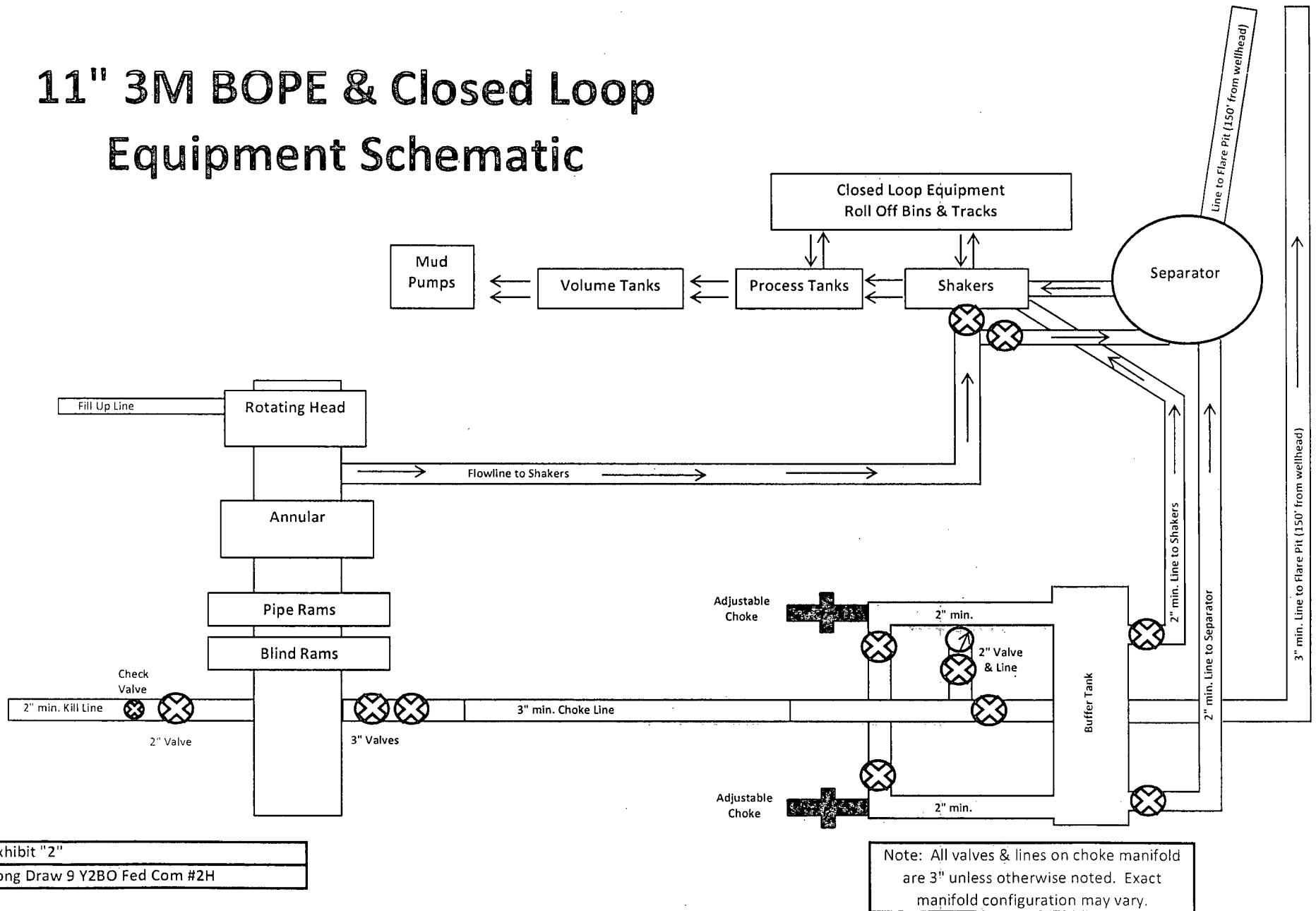


EXHIBIT "2"  
Long Draw 9 Y2BO Fed Com #2H

# 11" 3M BOPE & Closed Loop Equipment Schematic



**Notes Regarding Blowout Preventer**

**Mewbourne Oil Company**

Long Draw 9 Y2BO Fed Com #2H

330' FSL & 1790' FEL (SHL)

Sec 4-T20S-R25E

Eddy County, New Mexico

- I. Drilling nipple (bell nipple) to be constructed so that it can be removed without the use of a welder through the opening of the rotary table, with minimum internal diameter equal to blowout preventer bore.
- II. Blowout preventer and all fittings must be in good condition with a minimum 3000 psi working pressure on 9 5/8" and 7" casing.
- III. Safety valve must be available on the rig floor at all times with proper connections to install in the drill string. Valve must be full bore with minimum 3000 psi working pressure.
- IV. Equipment through which bit must pass shall be at least as large as internal diameter of the casing.
- V. A kelly cock shall be installed on the kelly at all times.

Blowout preventer closing equipment to include and accumulator of at least 40 gallon capacity, two independent sources of pressure on closing unit, and meet all other API specifications.

H2S Diagram  
Closed Loop Pad Dimensions 320' x 340'

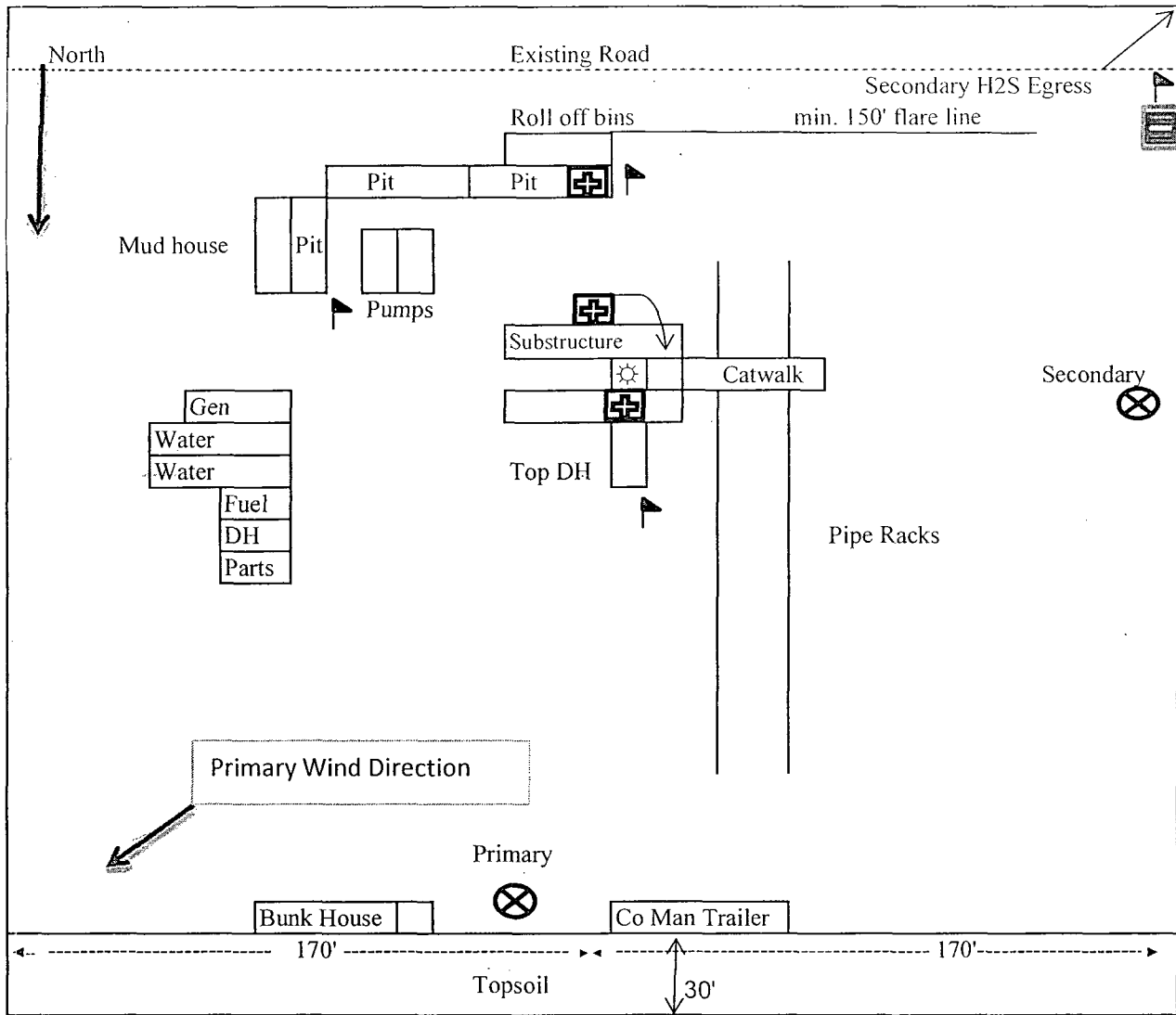


Exhibit 5



= Safety Stations



= Wind Markers



= H2S Monitors



= Warning Signs

Mewbourne Oil Company  
Long Draw 9 Y2BO Fed Com #2H  
330' FSL & 1790' FEL  
Sec. 4 T20S R25E  
Eddy County, NM

## Hydrogen Sulfide Drilling Operations Plan

**Mewbourne Oil Company**  
Long Draw 9 Y2BO Fed Com #2H  
330' FSL & 1790' FEL (SL)  
Sec 4-T20S-R24E  
Eddy County, New Mexico

### **1. General Requirements**

Rule 118 does not apply to this well because MOC has researched this area and no high concentrations of H<sub>2</sub>S were found. MOC will have on location and working all H<sub>2</sub>S safety equipment before the Delaware formation for purposes of safety and insurance requirements.

### **2. Hydrogen Sulfide Training**

All personnel, whether regularly assigned, contracted, or employed on an unscheduled basis, will have received training from a qualified instructor in the following areas prior to entering the drilling pad area of the well:

1. The hazards and characteristics of hydrogen sulfide gas.
2. The proper use of personal protective equipment and life support systems.
3. The proper use of hydrogen sulfide detectors, alarms, warning systems, briefing areas, evacuation procedures.
4. The proper techniques for first aid and rescue operations.

Additionally, supervisory personnel will be trained in the following areas:

- 1 The effects of hydrogen sulfide on metal components. If high tensile tubular systems are utilized, supervisory personnel will be trained in their special maintenance requirements.
- 2 Corrective action and shut in procedures, blowout prevention, and well control procedures while drilling a well.
- 3 The contents of the Hydrogen Sulfide Drilling Operations Plan.

There will be an initial training session prior to encountering a known hydrogen sulfide source. The initial training session shall include a review of the site specific Hydrogen Sulfide Drilling Operations Plan.

### **3. Hydrogen Sulfide Safety Equipment and Systems**

All hydrogen sulfide safety equipment and systems will be installed, tested, and operational prior to drilling below the 9-5/8" intermediate casing.

#### **1. Well Control Equipment**

- A. Choke manifold with minimum of one adjustable choke/remote choke.
- B. Blowout preventers equipped with blind rams and pipe rams to accommodate all pipe sizes with properly sized closing unit
- C. Auxiliary equipment including annular type blowout preventer.

#### **2. Protective Equipment for Essential Personnel**

Thirty minute self contained work unit located in the dog house and at briefing areas.

Additionally: If H<sub>2</sub>S is encountered in concentrations less than 10 ppm, fans will be placed in work areas to prevent the accumulation of hazardous amounts of poisonous gas. If higher concentrations of H<sub>2</sub>S are detected the well will be shut in MOC will follow Onshore Order 6 and install a rotating head, mud/gas separator, remote choke and flare line with igniter will be installed.



3. Hydrogen Sulfide Protection and Monitoring Equipment

Two portable hydrogen sulfide monitors positioned on location for optimum coverage and detection. The units shall have audible sirens to notify personnel when hydrogen sulfide levels exceed 20 PPM.

4. Visual Warning Systems

A. Wind direction indicators as indicated on the well site diagram.

B. Caution signs shall be posted on roads providing access to location. Signs shall be painted a high visibility color with lettering of sufficient size to be readable at reasonable distances from potentially contaminated areas.

4. **Mud Program**

The mud program has been designed to minimize the amount of hydrogen sulfide entrained in the mud system. Proper mud weight, safe drilling practices, and the use of hydrogen sulfide scavengers will minimize hazards while drilling the well.

5. **Metallurgy**

All tubular systems, wellheads, blowout preventers, drilling spools, kill lines, choke manifolds, and valves shall be suitable for service in a hydrogen sulfide environment when chemically treated.

6. **Communications**

State & County officials' phone numbers are posted on rig floor and supervisors trailer. Communications in company vehicles and toolpushers are either two way radios or cellular phones.

7. **Well Testing**

Drill stem testing is not an anticipated requirement for evaluation of this well. A drill stem test is required and will be conducted with a minimum number of personnel in the immediate vicinity. The test will be conducted during daylight hours only.

8. **Emergency Phone Numbers**

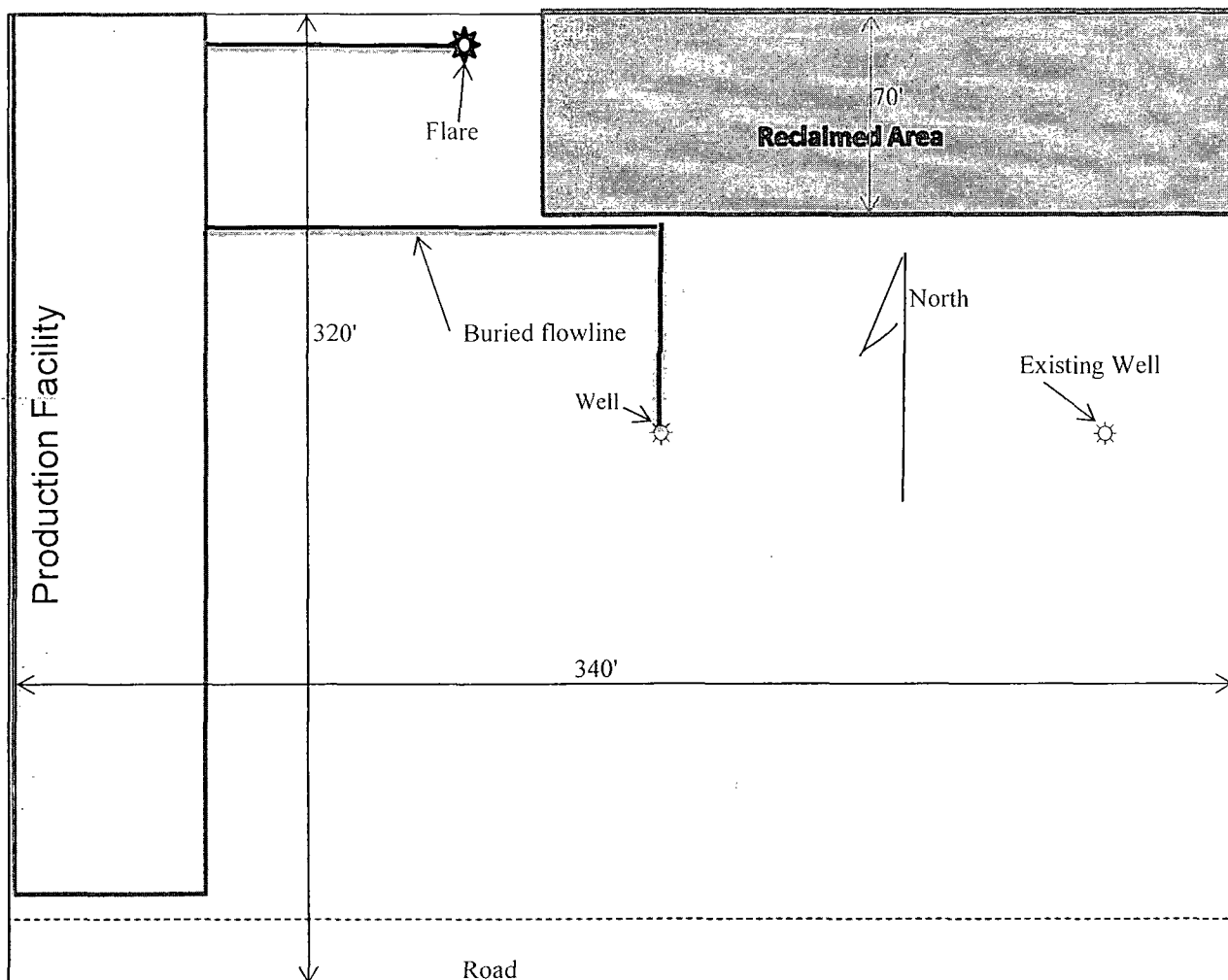
|  |                     |
|--|---------------------|
| Lea County Sheriff's Office                                    | 911 or 575-396-3611 |
| Ambulance Service  | 911 or 575-885-2111 |
| Carlsbad Fire Dept   | 911 or 575-885-2111 |
| Closest Medical Facility - Columbia Medical Center of Carlsbad | 575-492-5000        |

|                       |                       |              |
|-----------------------|-----------------------|--------------|
| Mewbourne Oil Company | Hobbs District Office | 575-393-5905 |
|                       | Fax                   | 575-397-6252 |
|                       | 2 <sup>nd</sup> Fax   | 575-393-7259 |

|                         |                |              |
|-------------------------|----------------|--------------|
| District Manager        | Robin Terrell  | 575-390-4816 |
| Drilling Superintendent | Frosty Lathan  | 575-390-4103 |
|                         | Bradley Bishop | 575-390-6838 |
| Drilling Foreman        | Wesley Noseff  | 575-441-0729 |

# Exhibit 6

Closed Loop Pad Dimensions 320' x 340'



Mewbourne Oil Company  
Long Draw 9 Y2BO Fed Com #2H  
330' FSL & 1790' FEL  
Sec. 4 T20S R25E  
Eddy Co. NM

## **SURFACE USE PLAN OF OPERATIONS**

### **MEWBOURNE OIL COMPANY**

Long Draw 9 Y2BO Fed Com #2H

330' FSL & 1790' FEL (SHL)

Sec. 4 – T20S-R25E

Eddy County, New Mexico

### **Introduction**

This plan is submitted with Form 3160-3, Application for Permit to Drill, Covering the above described well. The purpose of this plan is to describe the location of the proposed well, the proposed construction activities and operations plan, the magnitude of the surface disturbance involved, and the procedures to be followed in restoring the surface so that a complete appraisal can be made of the environmental impact associated with the proposed operations.

### **1. Existing Roads**

- a. The existing access road route to the proposed project is depicted on **Exhibit 3D**. Improvements to the driving surface will be done where necessary. No new surface disturbance will be done, unless otherwise noted in the New or Reconstructed Access Roads section of this surface use plan.
- b. The existing oil and gas roads utilized to access the proposed project will be maintained by crowning, clearing ditches, and fixing potholes. All existing structures on the entire access route such as cattleguards, other range improvement projects, culverts, etc. will be properly repaired or replaced if they are damaged or have deteriorated beyond practical use.
- c. Mewbourne Oil Co. will cooperate with other operators in the maintenance of lease roads.

### **2. New or Reconstructed Access Roads**

- a. No new road construction will be needed since the well pad adjoins a sufficient oil and gas road.

### **3. Location of Existing Wells**

- a. **Exhibit 4, 4A** of the APD depicts all known wells within a one mile radius of the proposed well.

### **4. Location of Existing and/or Proposed Production Facilities**

- a. All permanent, lasting more than 6 months, above ground structures including but not limited to pumpjacks, storage tanks, pipeline risers, meter housing, etc. that are not subject to safety requirements will be painted a non-reflective paint color that blends in with the surrounding landscape. The paint color will be one of the colors from the BLM Standard Environmental Colors chart selected by the BLM authorized officer.

- b. All proposed production facilities that are located on the well pad will be strategically placed to allow for maximum interim reclamation, recontouring, and revegetation of the well location.
- c. If any plans change regarding the production facility or other infrastructure (pipeline, electric line, etc.), we will submit a sundry notice or right of way (if applicable) prior to installation of construction.
- d. An electric line will be applied for through a sundry notice or BLM right of way at a later date.

## **5. Location and Types of Water**

- a. The well will be drilled with a combination of fresh water and brine water based mud systems. The water will be obtained from commercial suppliers in the area and/or hauled to the location by transport trucks over existing and proposed roads as identified above in this surface use plan.

## **6. Construction Materials**

- a. Construction material that will be used to build the well pad and road will be caliche.
- b. The construction contractor will be solely responsible for securing construction materials required for this operation and paying any royalties that may be required on those materials.
- c. Obtaining caliche: One way of obtaining caliche to build locations and roads will be by “turning over” the location. This means, caliche will be obtained from the actual well site. A caliche permit will be obtained from BLM prior to obtaining caliche. Amount of caliche will vary for each pad. The procedure below has been approved by BLM personnel:
  - i. The top 6 inches of topsoil is pushed off and stockpiled along the side of the location.
  - ii. An approximate 160' X 160' area is used within the proposed well site to remove caliche.
  - iii. Subsoil is removed and stockpiled within the surveyed well pad.
  - iv. When caliche is found, material will be stock piled within the pad site to build the location and road.
  - v. Then subsoil is pushed back in the hole and caliche is spread accordingly across entire location and road.
  - vi. Once well is drilled, the stock piled top soil will be used for interim reclamation and spread along areas where caliche is picked up and the location size is reduced.

- vii. Neither caliche, nor subsoil will be stock piled outside of the well pad. Topsoil will be stockpiled along the edge of the pad as depicted in the Well Site Layout or survey plat.

In the event that no caliche is found onsite, caliche will be hauled in from a BLM, state, or private mineral pit. A BLM mineral material permit will be acquired prior to obtaining any mineral material from BLM pits or land.

## **7. Methods of Handling Waste**

- a. The well will be drilled utilizing a closed loop system. Drill cuttings will be properly contained in steel tanks and taken to an NMOCD approved disposal facility.
- b. Drilling fluids and produced oil and water from the well during completion operations will be stored safely in closed containers and disposed of properly in an NMOCD approved disposal facility.
- c. Garbage and trash produced during drilling and completion operations will be collected in trash containers and disposed of properly at a state approved site. All trash on and around the well site will be collected for disposal.
- d. All human waste and grey water from drilling and completion operations will be properly contained and disposed of properly at a disposal facility.
- e. After drilling and completion operations, trash, chemicals, salts, frac sand and other waste material will be removed and disposed of properly at a disposal site.

## **8. Ancillary Facilities**

- a. No ancillary facilities will be needed for this proposed project.

## **9. Well Site Layout**

- a. The proposed drilling pad to be built was staked and surveyed by a professional surveyor. The attached survey plat of the well site depicts the drilling pad layout as staked.
- b. A title of a well site diagram is **Exhibit 5**. This diagram depicts the rig layout.
- c. In areas to be heavily disturbed, the top 6 inches of soil material, will be stripped and stockpiled on the perimeter of the well location to keep topsoil viable, and to make redistribution of topsoil more efficient during interim reclamation. Stockpiled topsoil should include vegetative material. Topsoil will be clearly segregated and stored separately from subsoils. Contaminated soil will not be stockpiled, but properly treated and handled prior to topsoil salvaging.

## 10. Plans for Surface Reclamation

Within 90 days of cessation of drilling and completion operations, all equipment not necessary for production operations will be removed. The location will be cleaned of all trash and junk to assure the well site is left as aesthetically pleasing as reasonably possible.

### a. Interim Reclamation (well pad)

- i. Interim reclamation will be performed on the well site after the well is drilled and completed. Exhibit 6 depicts the location and dimensions of the planned interim reclamation for the well site.
- ii. The well location and surrounding areas will be cleared of, and maintained free of, all materials, trash, and equipment not required for production.
- iii. In areas planned for interim reclamation, all the surfacing material will be removed and returned to the original mineral pit or recycled to repair or build roads and well pads.
- iv. The areas planned for interim reclamation will then be recontoured to the original contour if feasible, or if not feasible, to an interim contour that blends with the surrounding topography as much as possible. Where applicable, the fill material of the well pad will be backfilled into the cut to bring the area back to the original contour. The interim cut and fill slopes prior to re-seeding will not be steeper than a 3:1 ratio, unless the adjacent native topography is steeper. Note: Constructed slopes may be much steeper during drilling, but will be recontoured to the above ratios during interim reclamation.
- v. Topsoil will be evenly respread and aggressively revegetated over the entire disturbed area not needed for all-weather operations including cuts & fills. To seed the area, the proper BLM seed mixture, free of noxious weeds, will be used. Final seedbed preparation will consist of contour cultivating to a depth of 4 to 6 inches within 24 hours prior to seeding, dozer tracking, or other imprinting in order to break the soil crust and create seed germination micro-sites.
- vi. Proper erosion control methods will be used on the area to control erosion, runoff and siltation of the surrounding area.



- vii. The interim reclamation will be monitored periodically to ensure that vegetation has reestablished and that erosion and invasive/noxious weeds are controlled.

**b. Final Reclamation (well pad, buried pipelines, etc.)**

- i. Prior to final reclamation procedures, the well pad, road, and surrounding area will be cleared of material, trash, and equipment.
- ii. All surfacing material will be removed and returned to the original mineral pit or recycled to repair or build roads and well pads.
- iii. All disturbed areas, including roads, pipelines, pads, production facilities, and interim reclaimed areas will be recontoured to the contour existing prior to initial construction or a contour that blends indistinguishably with the surrounding landscape. Topsoil that was spread over the interim reclamation areas will be stockpiled prior to recontouring. The topsoil will be redistributed evenly over the entire disturbed site to ensure successful revegetation.
- iv. After all the disturbed areas have been properly prepared, the areas will be seeded with the proper BLM seed mixture, free of noxious weeds. Final seedbed preparation will consist of contour cultivating to a depth of 4 to 6 inches within 24 hours prior to seeding, dozer tracking, or other imprinting in order to break the soil crust and create seed germination micro-sites.
- v. Proper erosion control methods will be used on the entire area to control erosion, runoff and siltation of the surrounding area.
- vi. All unused equipment and structures including pipelines, electric line poles, tanks, etc. that serviced the well will be removed.
- vii. All reclaimed areas will be monitored periodically to ensure that revegetation occurs, that the area is not redisturbed, and that erosion and invasive/noxious weeds are controlled.

**11. Surface Ownership**

- a. The surface ownership of the proposed project is private.  
Surface Owner: Herrick Family Trust (Rufus & Carol Herrick) & Nike Henson  
Phone Number: 206-232-7100  
Address: 8817 SE 60<sup>th</sup>, Mercer Island, WA 98040
- b. A surface use agreement was obtained from the private surface owner regarding the proposed project.

**12. Other Information**

- a. No other information is needed at this time.

### **13. Operator's Representative**

- a. Through APD approval, drilling, completion and production operations:

**Robin Terrell, District Manager**

Mewbourne Oil Company

PO Box 5270

Hobbs, NM 88241

575-393-5905

## PECOS DISTRICT CONDITIONS OF APPROVAL

|                              |   |
|------------------------------|---|
| <b>OPERATOR'S NAME:</b>      | <b>Mewbourne Oil Company</b>                                |
| <b>LEASE NO.:</b>            | <b>NMNM-14758</b>   |
| <b>WELL NAME &amp; NO.:</b>  | <b>Long Draw 9 Y2BO Fed Com 2H</b>                          |
| <b>SURFACE HOLE FOOTAGE:</b> | <b>0330' FSL &amp; 1790' FEL</b>                            |
| <b>BOTTOM HOLE FOOTAGE</b>   | <b>0530' FSL &amp; 1650' FEL Sec. 09, T. 20 S., R 25 E.</b> |
| <b>LOCATION:</b>             | <b>Section 04, T. 20 S., R 25 E., NMPM</b>                  |
| <b>COUNTY:</b>               | <b>Eddy County, New Mexico</b>                              |

### TABLE OF CONTENTS

Standard Conditions of Approval (COA) apply to this APD. If any deviations to these standards exist or special COAs are required, the section with the deviation or requirement will be checked below.

- ☐ **General Provisions**
- ☐ **Permit Expiration**
- ☐ **Archaeology, Paleontology, and Historical Sites**
- ☐ **Noxious Weeds**
- ☒ **Special Requirements**
  - Communitization Agreement
- ☐ **Construction**
  - Notification
  - Topsoil
  - Closed Loop System
  - Federal Mineral Material Pits
  - Well Pads
  - Roads
- ☐ **Road Section Diagram**
- ☒ **Drilling**
  - Cement Requirements
  - High Cave/Karst
  - Logging Requirements
  - Waste Material and Fluids
- ☐ **Production (Post Drilling)**
  - Well Structures & Facilities
- ☐ **Interim Reclamation**
- ☐ **Final Abandonment & Reclamation**

## **I. GENERAL PROVISIONS**

The approval of the Application For Permit To Drill (APD) is in compliance with all applicable laws and regulations: 43 Code of Federal Regulations 3160, the lease terms, Onshore Oil and Gas Orders, Notices To Lessees, New Mexico Oil Conservation Division (NMOCD) Rules, National Historical Preservation Act As Amended, and instructions and orders of the Authorized Officer. Any request for a variance shall be submitted to the Authorized Officer on Form 3160-5, Sundry Notices and Report on Wells.

## **II. PERMIT EXPIRATION**

If the permit terminates prior to drilling and drilling cannot be commenced within 60 days after expiration, an operator is required to submit Form 3160-5, Sundry Notices and Reports on Wells, requesting surface reclamation requirements for any surface disturbance. However, if the operator will be able to initiate drilling within 60 days after the expiration of the permit, the operator must have set the conductor pipe in order to allow for an extension of 60 days beyond the expiration date of the APD. (Filing of a Sundry Notice is required for this 60 day extension.)

## **III. ARCHAEOLOGICAL, PALEONTOLOGY & HISTORICAL SITES**

Any cultural and/or paleontological resource discovered by the operator or by any person working on the operator's behalf shall immediately report such findings to the Authorized Officer. The operator is fully accountable for the actions of their contractors and subcontractors. The operator shall suspend all operations in the immediate area of such discovery until written authorization to proceed is issued by the Authorized Officer. An evaluation of the discovery shall be made by the Authorized Officer to determine the appropriate actions that shall be required to prevent the loss of significant cultural or scientific values of the discovery. The operator shall be held responsible for the cost of the proper mitigation measures that the Authorized Officer assesses after consultation with the operator on the evaluation and decisions of the discovery. Any unauthorized collection or disturbance of cultural or paleontological resources may result in a shutdown order by the Authorized Officer.

## **IV. NOXIOUS WEEDS**

The operator shall be held responsible if noxious weeds become established within the areas of operations. Weed control shall be required on the disturbed land where noxious weeds exist, which includes the roads, pads, associated pipeline corridor, and adjacent land affected by the establishment of weeds due to this action. The operator shall consult with the Authorized Officer for acceptable weed control methods, which include following EPA and BLM requirements and policies.

## **V. SPECIAL REQUIREMENT(S)**

### **Communitization Agreement**

A Communitization Agreement covering the acreage dedicated to this well must be filed for approval with the BLM. The effective date of the agreement shall be prior to any sales. In addition, the well sign shall include the surface and bottom hole lease numbers. If the Communitization Agreement number is known, it shall also be on the sign. If not, it shall be placed on the sign when the sign is replaced.

## **VI. CONSTRUCTION**

### **A. NOTIFICATION**

The BLM shall administer compliance and monitor construction of the access road and well pad. Notify the Carlsbad Field Office at (575) 234-5909 at least 3 working days prior to commencing construction of the access road and/or well pad.

When construction operations are being conducted on this well, the operator shall have the approved APD and Conditions of Approval (COA) on the well site and they shall be made available upon request by the Authorized Officer.

### **B. TOPSOIL**

The operator shall strip the top portion of the soil (root zone) from the entire well pad area and stockpile the topsoil along the edge of the well pad as depicted in the APD. The root zone is typically six (6) inches in depth. All the stockpiled topsoil will be redistributed over the interim reclamation areas. Topsoil shall not be used for berming the pad or facilities. For final reclamation, the topsoil shall be spread over the entire pad area for seeding preparation.

Other subsoil (below six inches) stockpiles must be completely segregated from the topsoil stockpile. Large rocks or subsoil clods (not evident in the surrounding terrain) must be buried within the approved area for interim and final reclamation.

### **C. CLOSED LOOP SYSTEM**

Tanks are required for drilling operations: No Pits.

The operator shall properly dispose of drilling contents at an authorized disposal site.

### **D. FEDERAL MINERAL MATERIALS PIT**

Payment shall be made to the BLM prior to removal of any federal mineral materials. Call the Carlsbad Field Office at (575) 234-5972.

### **E. WELL PAD SURFACING**

Surfacing of the well pad is not required.

If the operator elects to surface the well pad, the surfacing material may be required to be removed at the time of reclamation. The well pad shall be constructed in a manner which creates the smallest possible surface disturbance, consistent with safety and operational needs.

### **F. EXCLOSURE FENCING (CELLARS & PITS)**



**Exclosure Fencing**

The operator will install and maintain exclosure fencing for all open well cellars to prevent access to public, livestock, and large forms of wildlife before and after drilling operations until the pit is free of fluids and the operator initiates backfilling. (For examples of exclosure fencing design, refer to BLM's Oil and Gas Gold Book, Exclosure Fence Illustrations, Figure 1, Page 18.)

**G. ON LEASE ACCESS ROADS****Road Width**

The access road shall have a driving surface that creates the smallest possible surface disturbance and does not exceed fourteen (14) feet in width. The maximum width of surface disturbance, when constructing the access road, shall not exceed twenty-five (25) feet.

**Surfacing**

Surfacing material is not required on the new access road driving surface. If the operator elects to surface the new access road or pad, the surfacing material may be required to be removed at the time of reclamation.

Where possible, no improvements should be made on the unsurfaced access road other than to remove vegetation as necessary, road irregularities, safety issues, or to fill low areas that may sustain standing water.

The Authorized Officer reserves the right to require surfacing of any portion of the access road at any time deemed necessary. Surfacing may be required in the event the road deteriorates, erodes, road traffic increases, or it is determined to be beneficial for future field development. The surfacing depth and type of material will be determined at the time of notification.

**Crowning**

Crowning shall be done on the access road driving surface. The road crown shall have a grade of approximately 2% (i.e., a 1" crown on a 14' wide road). The road shall conform to Figure 1; cross section and plans for typical road construction.

**Ditching**

Ditching shall be required on both sides of the road.

**Turnouts**

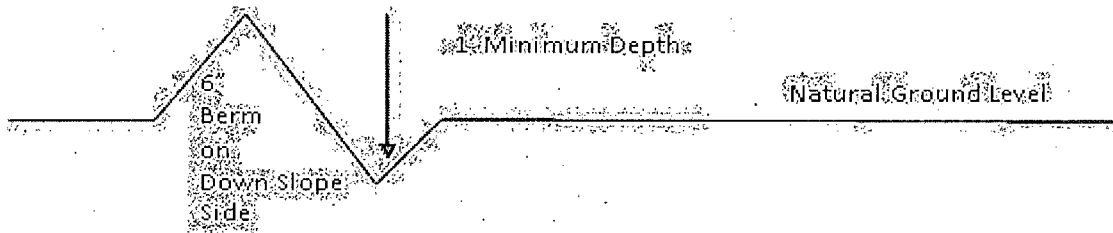
Vehicle turnouts shall be constructed on the road. Turnouts shall be intervisible with interval spacing distance less than 1000 feet. Turnouts shall conform to Figure 1; cross section and plans for typical road construction.

**Drainage**

Drainage control systems shall be constructed on the entire length of road (e.g. ditches, sidehill outsloping and insloping, lead-off ditches, culvert installation, and low water crossings).

A typical lead-off ditch has a minimum depth of 1 foot below and a berm of 6 inches above natural ground level. The berm shall be on the down-slope side of the lead-off ditch.

#### **Cross Section of a Typical Lead-off Ditch**



All lead-off ditches shall be graded to drain water with a 1 percent minimum to 3 percent maximum ditch slope. The spacing interval are variable for lead-off ditches and shall be determined according to the formula for spacing intervals of lead-off ditches, but may be amended depending upon existing soil types and centerline road slope (in %).

#### **Formula for Spacing Interval of Lead-off Ditches**

Example - On a 4% road slope that is 400 feet long, the water flow shall drain water into a lead-off ditch. Spacing interval shall be determined by the following formula:

$$400 \text{ foot road with } 4\% \text{ road slope: } \frac{400'}{4\%} + 100' = 200' \text{ lead-off ditch interval}$$

#### **Cattleguards**

An appropriately sized cattleguard sufficient to carry out the project shall be installed and maintained at fence/road crossings. Any existing cattleguards on the access road route shall be repaired or replaced if they are damaged or have deteriorated beyond practical use. The operator shall be responsible for the condition of the existing cattleguards that are in place and are utilized during lease operations.

#### **Fence Requirement**

Where entry is granted across a fence line, the fence shall be braced and tied off on both sides of the passageway prior to cutting. The operator shall notify the private surface landowner or the grazing allotment holder prior to crossing any fences.

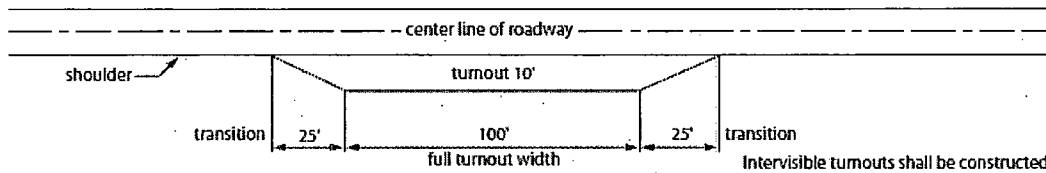
#### **Public Access**

Public access on this road shall not be restricted by the operator without specific written approval granted by the Authorized Officer.

### Construction Steps

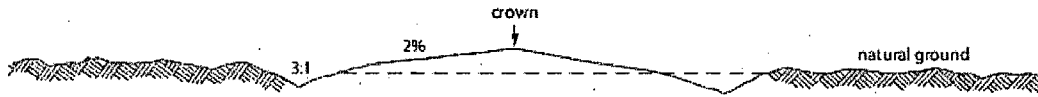
1. Salvage topsoil
2. Construct road

3. Redistribute topsoil
4. Revegetate slopes

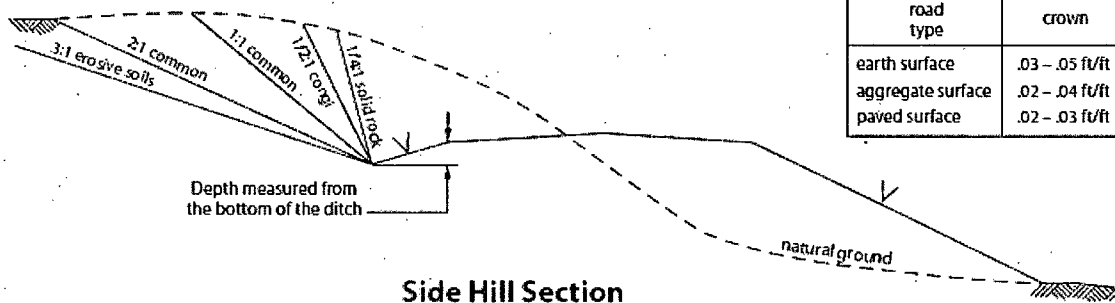


**Typical Turnout Plan**

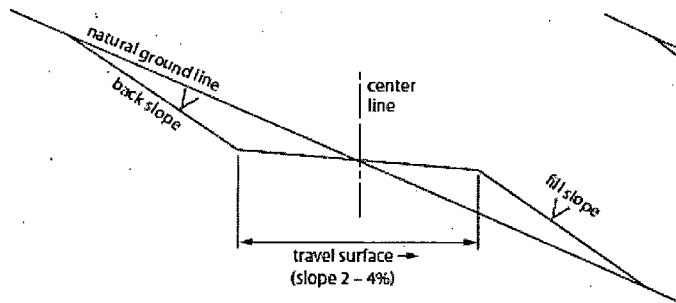
Intervisble turnouts shall be constructed on all single lane roads on all blind curves with additional tunouts as needed to keep spacing below 1000 feet.



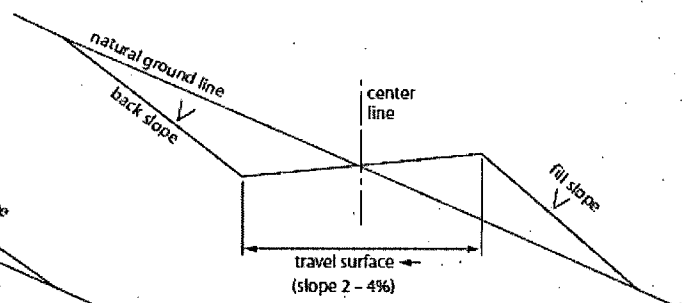
**Level Ground Section**



**Side Hill Section**



**Typical Outsloped Section**



**Typical Insloped Section**

Figure 1. Cross-sections and plans for typical road sections representative of BLM resource or FS local and higher-class roads.

## **VII. DRILLING**

### **A. DRILLING OPERATIONS REQUIREMENTS**

The BLM is to be notified in advance for a representative to witness:

- a. Spudding well (minimum of 24 hours)
- b. Setting and/or Cementing of all casing strings (minimum of 4 hours)
- c. BOPE tests (minimum of 4 hours)

☒ **Eddy County**

Call the Carlsbad Field Office, 620 East Greene St., Carlsbad, NM 88220,  
(575) 361-2822

1. **Although Hydrogen Sulfide has not been reported in the area, it is always a potential hazard. If Hydrogen Sulfide is encountered, report measured amounts and formations to the BLM.**
2. Unless the production casing has been run and cemented or the well has been properly plugged, the drilling rig shall not be removed from over the hole without prior approval. **If the drilling rig is removed without approval – an Incident of Non-Compliance will be written and will be a “Major” violation.**
3. **The record of the drilling rate along with the GR/N well log run from TD to surface (horizontal well – vertical portion of hole) shall be submitted to the BLM office as well as all other logs run on the borehole 30 days from completion. If available, a digital copy of the logs is to be submitted in addition to the paper copies. The Rustler top and top and bottom of Salt are to be recorded on the Completion Report.**

### **B. CASING**

**Changes to the approved APD casing program need prior approval if the items substituted are of lesser grade or different casing size or are Non-API. The Operator can exchange the components of the proposal with that of superior strength (i.e. changing from J-55 to N-80, or from 36# to 40#). Changes to the approved cement program need prior approval if the altered cement plan has less volume or strength or if the changes are substantial (i.e. Multistage tool, ECP, etc.). The initial wellhead installed on the well will remain on the well with spools used as needed.**

**Centralizers required on surface casing per Onshore Order 2.III.B.1.f.**

**Wait on cement (WOC) for Water Basin:**

After cementing but before commencing any tests, the casing string shall stand cemented under pressure until both of the following conditions have been met: 1) cement reaches a minimum compressive strength of 500 psi at the shoe, 2) until cement has been in place at least 8 hours. WOC time will be recorded in the driller's log. See individual casing strings for details regarding lead cement slurry requirements.

No pea gravel permitted for remedial or fall back remedial without prior authorization from the BLM engineer.

**High Cave/Karst**

Possibility of lost circulation in the San Andres.

**A MINIMUM OF TWO CASING STRINGS CEMENTED TO SURFACE IS REQUIRED IN HIGH CAVE/KARST AREAS. THE CEMENT MUST BE IN A SOLID SHEATH. THEREFORE, ONE INCH OPERATIONS ARE NOT SUFFICIENT TO PROTECT CAVE KARST RESOURCES. A CASING DESIGN THAT HAS A ONE INCH JOB PERFORMED DOES NOT COUNT AS A SOLID SHEATH.**

**ON TWO STRING DESIGN – CONTINGENCY CASING WILL BE REQUIRED IF LOST CIRCULATION (TOTAL LOSS) OCCURS WHILE DRILLING THE SURFACE HOLE. THE SURFACE HOLE WILL HAVE TO BE REAMED AND A LARGER CASING INSTALLED AND THE BLM IS TO BE CONTACTED PRIOR TO RUNNING THE CASING. NOTE: A DEEP CONDUCTOR WILL BE TREATED AND CEMENTED AS A CONTINGENCY CASING.**

**ON TWO STRING DESIGN WHERE THE SURFACE CASING HAD A SUCCESSFUL CEMENT JOB; IF LOST CIRCULATION (TOTAL LOSS) OCCURS WHILE DRILLING THE PRODUCTION 8-3/4 INCH HOLE, THE CEMENT PROGRAM FOR THE PRODUCTION 7 INCH CASING WILL NEED TO BE MODIFIED AND THE BLM IS TO BE CONTACTED PRIOR TO RUNNING THE CASING. A DV TOOL WILL BE REQUIRED.**

1. The **9-5/8** inch surface casing shall be set at approximately **805** feet and cemented to the surface.
  - a. If cement does not circulate to the surface, the appropriate BLM office shall be notified and a temperature survey utilizing an electronic type temperature survey with surface log readout will be used or a cement bond log shall be run to verify the top of the cement. Temperature survey will be run a minimum of six hours after pumping cement and ideally between 8-10 hours after completing the cement job.
  - b. **Wait on cement (WOC) time for a primary cement job is to include the lead cement slurry.**
  - c. Wait on cement (WOC) time for a remedial job will be a minimum of 4 hours after bringing cement to surface or 500 pounds compressive strength, whichever is greater.
  - d. If cement falls back, remedial cementing will be done prior to drilling out that string.

**Centralizers required through the curve and a minimum of one every other joint.**

2. The minimum required fill of cement behind the **7** inch production casing is:  
☒ Cement to surface. If cement does not circulate, contact the appropriate BLM office. **Excess calculates to 22% - Additional cement may be required.**
3. Cement not required on the **4-1/2"** casing. **Packer system being used.**
4. If hardband drill pipe is rotated inside casing, returns will be monitored for metal. If metal is found in samples, drill pipe will be pulled and rubber protectors which have a larger diameter than the tool joints of the drill pipe will be installed prior to continuing drilling operations.

### **C. PRESSURE CONTROL**

1. All blowout preventer (BOP) and related equipment (BOPE) shall comply with well control requirements as described in Onshore Oil and Gas Order No. 2 and API 53.
2. **In the case where the only BOP installed is an annular preventer, it shall be tested to a minimum of 2000 psi (which may require upgrading to 3M or 5M annular).**

3. Minimum working pressure of the blowout preventer (BOP) and related equipment (BOPE) required for drilling below the surface casing shoe shall be **2000 (2M) psi**.
4. The appropriate BLM office shall be notified a minimum of 4 hours in advance for a representative to witness the tests.
  - a. In a water basin, for all casing strings utilizing slips, these are to be set as soon as the crew and rig are ready and any fallback cement remediation has been done. The casing cut-off and BOP installation can be initiated four hours after installing the slips, which will be approximately six hours after bumping the plug. For those casing strings not using slips, the minimum wait time before cut-off is eight hours after bumping the plug. BOP/BOPE testing can begin after cut-off or once cement reaches 500 psi compressive strength (including lead when specified), whichever is greater. However, if the float does not hold, cut-off cannot be initiated until cement reaches 500 psi compressive strength (including lead when specified).
  - b. The tests shall be done by an independent service company utilizing a test plug **not a cup or J-packer**.
  - c. The test shall be run on a 5000 psi chart for a 2-3M BOP/BOP, on a 10000 psi chart for a 5M BOP/BOPE and on a 15000 psi chart for a 10M BOP/BOPE. If a linear chart is used, it shall be a one hour chart. A circular chart shall have a maximum 2 hour clock. If a twelve hour or twenty-four hour chart is used, tester shall make a notation that it is run with a two hour clock.
  - d. The results of the test shall be reported to the appropriate BLM office.
  - e. All tests are required to be recorded on a calibrated test chart. **A copy of the BOP/BOPE test chart and a copy of independent service company test will be submitted to the appropriate BLM office.**
  - f. The BOP/BOPE test shall include a low pressure test from 250 to 300 psi. The test will be held for a minimum of 10 minutes if test is done with a test plug and 30 minutes without a test plug. This test shall be performed prior to the test at full stack pressure.

#### **D. DRILL STEM TEST**

If drill stem tests are performed, Onshore Order 2.III.D shall be followed.

#### **E. WASTE MATERIAL AND FLUIDS**

All waste (i.e. drilling fluids, trash, salts, chemicals, sewage, gray water, etc.) created as a result of drilling operations and completion operations shall be safely contained and disposed of properly at a waste disposal facility. No waste material or fluid shall be disposed of on the well location or surrounding area.

Porto-johns and trash containers will be on-location during fracturing operations or any other crew-intensive operations.

**JAM 042315**



## **VIII. PRODUCTION (POST DRILLING)**

### **A. WELL STRUCTURES & FACILITIES**

#### **Placement of Production Facilities**

Production facilities should be placed on the well pad to allow for maximum interim recontouring and revegetation of the well location.

#### **Exclosure Netting (Open-top Tanks)**

Immediately following active drilling or completion operations, the operator will take actions necessary to prevent wildlife and livestock access, including avian wildlife, to all open-topped tanks that contain or have the potential to contain salinity sufficient to cause harm to wildlife or livestock, hydrocarbons, or Resource Conservation and Recovery Act of 1976-exempt hazardous substances. At a minimum, the operator will net, screen, or cover open-topped tanks to exclude wildlife and livestock and prevent mortality. If the operator uses netting, the operator will cover and secure the open portion of the tank to prevent wildlife entry. The operator will net, screen, or cover the tanks until the operator removes the tanks from the location or the tanks no longer contain substances that could be harmful to wildlife or livestock. Use a maximum netting mesh size of 1 ½ inches. The netting must not be in contact with fluids and must not have holes or gaps.

#### **Chemical and Fuel Secondary Containment and Exclosure Screening**

The operator will prevent all hazardous, poisonous, flammable, and toxic substances from coming into contact with soil and water. At a minimum, the operator will install and maintain an impervious secondary containment system for any tank or barrel containing hazardous, poisonous, flammable, or toxic substances sufficient to contain the contents of the tank or barrel and any drips, leaks, and anticipated precipitation. The operator will dispose of fluids within the containment system that do not meet applicable state or U. S. Environmental Protection Agency livestock water standards in accordance with state law; the operator must not drain the fluids to the soil or ground. The operator will design, construct, and maintain all secondary containment systems to prevent wildlife and livestock exposure to harmful substances. At a minimum, the operator will install effective wildlife and livestock exclosure systems such as fencing, netting, expanded metal mesh, lids, and grate covers. Use a maximum netting mesh size of 1 ½ inches.

#### **Open-Vent Exhaust Stack Exclosures**

The operator will construct, modify, equip, and maintain all open-vent exhaust stacks on production equipment to prevent birds and bats from entering, and to discourage perching, roosting, and nesting. (*Recommended exclosure structures on open-vent exhaust stacks are in the shape of a cone.*) Production equipment includes, but may not be limited to, tanks, heater-treaters, separators, dehydrators, flare stacks, in-line units, and compressor mufflers.

#### **Containment Structures**

Proposed production facilities such as storage tanks and other vessels will have a secondary containment structure that is constructed to hold the capacity of 1.5 times the

largest tank, plus freeboard to account for precipitation, unless more stringent protective requirements are deemed necessary.

#### **Painting Requirement**

All above-ground structures including meter housing that are not subject to safety requirements shall be painted a flat non-reflective paint color, **Shale Green** from the BLM Standard Environmental Color Chart (CC-001: June 2008).

### **IX. INTERIM RECLAMATION**

During the life of the development, all disturbed areas not needed for active support of production operations should undergo interim reclamation in order to minimize the environmental impacts of development on other resources and uses.

Within six (6) months of well completion, operators should work with BLM surface management specialists (Jim Amos: 575-234-5909) to devise the best strategies to reduce the size of the location. Interim reclamation should allow for remedial well operations, as well as safe and efficient removal of oil and gas.

During reclamation, the removal of caliche is important to increasing the success of revegetating the site. Removed caliche that is free of contaminants may be used for road repairs, fire walls or for building other roads and locations. In order to operate the well or complete workover operations, it may be necessary to drive, park and operate on restored interim vegetation within the previously disturbed area. Disturbing revegetated areas for production or workover operations will be allowed. If there is significant disturbance and loss of vegetation, the area will need to be revegetated. Communicate with the appropriate BLM office for any exceptions/exemptions if needed.

All disturbed areas after they have been satisfactorily prepared need to be reseeded with the seed mixture provided below.

Upon completion of interim reclamation, the operator shall submit a Sundry Notices and Reports on Wells, Subsequent Report of Reclamation (Form 3160-5).

### **X. FINAL ABANDONMENT & RECLAMATION**

At final abandonment, well locations, production facilities, and access roads must undergo "final" reclamation so that the character and productivity of the land are restored.

Earthwork for final reclamation must be completed within six (6) months of well plugging. All pads, pits, facility locations and roads must be reclaimed to a satisfactory revegetated, safe, and stable condition, unless an agreement is made with the landowner or BLM to keep the road and/or pad intact.

After all disturbed areas have been satisfactorily prepared, these areas need to be revegetated with the seed mixture provided below. Seeding should be accomplished by

drilling on the contour whenever practical or by other approved methods. Seeding may need to be repeated until revegetation is successful, as determined by the BLM.

Operators shall contact a BLM surface protection specialist prior to surface abandonment operations for site specific objectives (Jim Amos: 575-234-5909).

### SEED MIXTURE 3 (SHALLOW LOCATIONS)

The holder shall seed all disturbed areas with the seed mixture listed below. The seed mixture shall be planted in the amounts specified in pounds of pure live seed (PLS)\* per acre. There shall be no primary or secondary noxious weeds in the seed mixture. Seed will be tested and the viability testing of seed will be done in accordance with State law(s) and within nine months prior to purchase. Commercial seed will be certified or registered seed. The seed container will be tagged in accordance with State law(s) and available for inspection by the authorized officer.

Seed will be planted using a drill equipped with a depth regulator to ensure proper depth of planting where drilling is possible. The seed mixture will be evenly and uniformly planted over the disturbed area (smaller/heavier seeds have a tendency to drop to the bottom of the drill and are planted first; the holder shall take appropriate measures to ensure this does not occur). Where drilling is not possible, seed will be broadcast and the area shall be raked or chained to cover the seed. When broadcasting the seed, the pounds per acre are to be double the amounts listed below. The seeding will be repeated until a satisfactory stand is established as determined by the authorized officer. Evaluation of growth will not be made before completion of at least one full growing season after seeding.

Species to be planted in pounds of pure live seed\* per acre (note: if broadcasting seed, amounts are to be doubled):

| Species  | Pound/acre |
|--|------------|
| Sideoats grama ( <i>Boutelous curtipendula</i> )   | 7.0        |
| Lehmann's lovegrass ( <i>Eragrostis lehmanniana</i> )<br>or Boer lovegrass ( <i>Eragrostis chloremelas</i> ) | 1.0        |

\* Pounds of pure live seed = (Pounds of seed) x (Percent purity) x (Percent germination)