

District I  
1625 N. French Dr., Hobbs, NM 88240  
Phone: (575) 393-6161 Fax: (575) 393-0720  
District II  
811 S. First St., Artesia, NM 88210  
Phone: (575) 748-1283 Fax: (575) 748-9720  
District III  
1000 Rio Brazos Road, Aztec, NM 87410  
Phone: (505) 334-6178 Fax: (505) 334-6170  
District IV  
1220 S. St. Francis Dr., Santa Fe, NM 87505  
Phone: (505) 476-3460 Fax: (505) 476-3462

**WELL LOCATION AND ACREAGE DEDICATION PLAT**

<sup>1</sup> API Number <b>30-015- 43035</b>	<sup>2</sup> Pool Code <b>96610</b>	<sup>3</sup> Pool Name <b>Empire; Glorieta Yeso East</b>
<sup>4</sup> Property Code <b>313320</b>	<sup>5</sup> Property Name <b>BOSE IKARD 4 STATE COM</b>	
<sup>7</sup> OGRID NO. <b>229137</b>	<sup>8</sup> Operator Name <b>COG OPERATING, LLC</b>	<sup>9</sup> Elevation <b>3604'</b>

<sup>10</sup> Surface Location

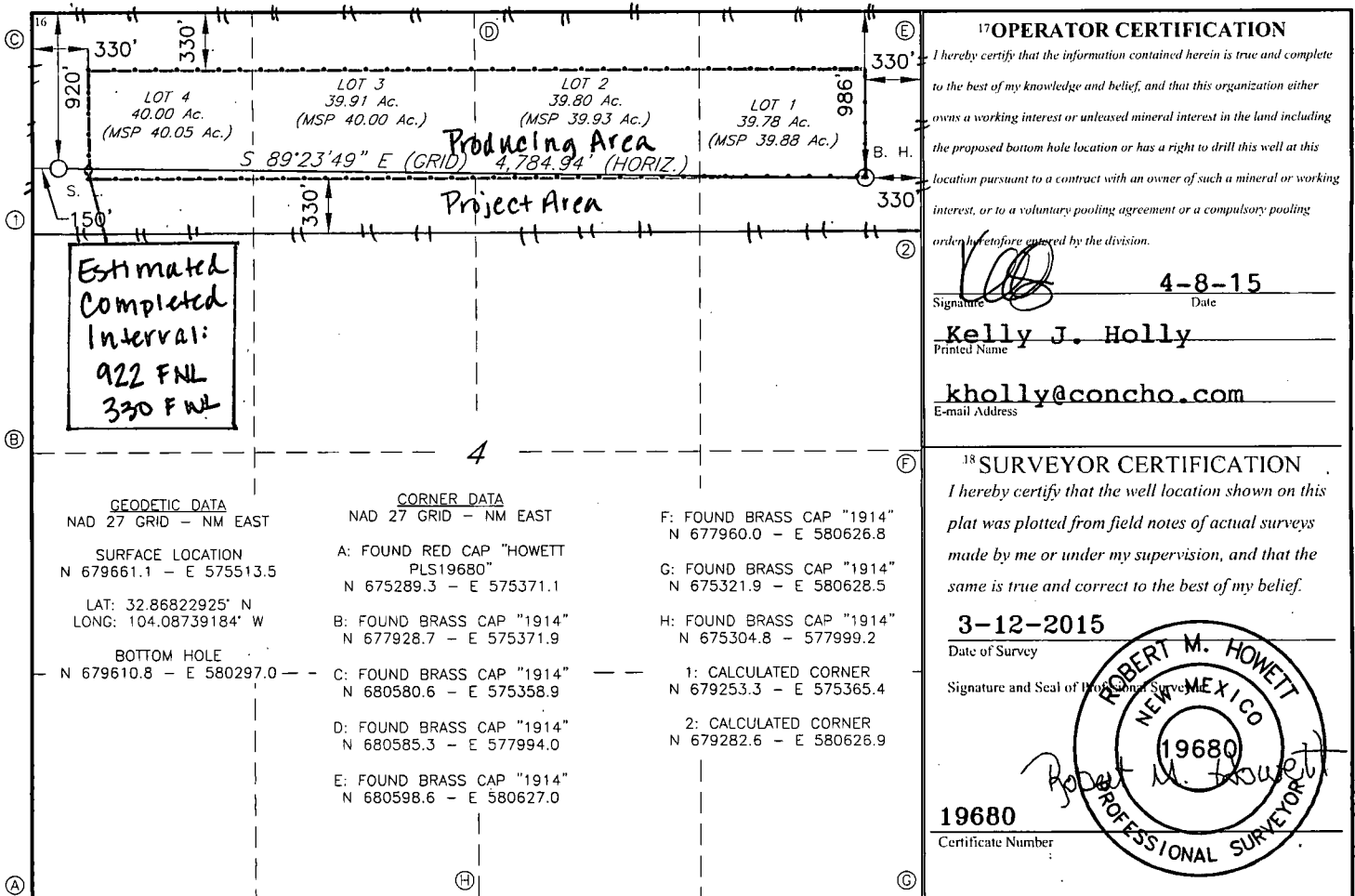
UL or lot no.	Section	Township	Range	Lot Idn	Feet from the	North/South line	Feet From the	East/West line	County
<b>4</b>	<b>4</b>	<b>17S</b>	<b>29E</b>		<b>920</b>	<b>NORTH</b>	<b>150</b>	<b>WEST</b>	<b>EDDY</b>

<sup>11</sup> Bottom Hole Location If Different From Surface

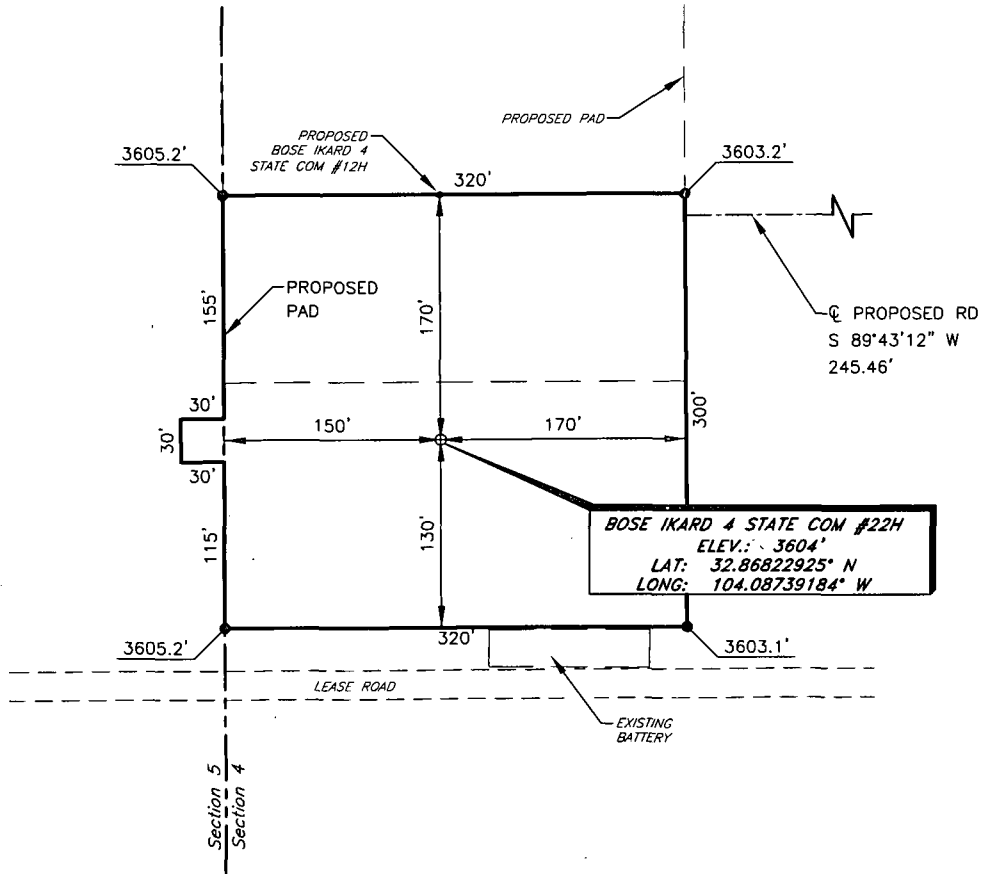
UL or lot no.	Section	Township	Range	Lot Idn	Feet from the	North/South line	Feet from the	East/West line	County
<b>1</b>	<b>4</b>	<b>17S</b>	<b>29E</b>		<b>986</b>	<b>NORTH</b>	<b>330</b>	<b>EAST</b>	<b>EDDY</b>

<sup>12</sup> Dedicated Acres <b>159.86</b>	<sup>13</sup> Joint or Infill	<sup>14</sup> Consolidation Code	<sup>15</sup> Order No.
--	-------------------------------	----------------------------------	-------------------------

No allowable will be assigned to this completion until all interest have been consolidated or a non-standard unit has been approved by the division.



COG OPERATING, LLC  
 BOSE IKARD 4 STATE COM #22H  
 (920' FNL & 150' FWL)  
 SECTION 4, T17S, R29E  
 N. M. P. M., EDDY CO., NEW MEXICO



DIRECTIONS TO LOCATION

From the intersection of CR-214 (Barnaval Draw) and CR-211 (Old Loco)  
 Go West on CR-211 approx. 0.6 miles;  
 Turn Right on lease rd. and go North approx. 0.2 miles;  
 Location is approx. 409 feet to the West of lease road.



Firm No.: TX 10193838 NM 4655451

Copyright 2014 - All Rights Reserved

NO.	REVISION	DATE
JOB NO.: LS1503082		
DWG. NO.: 1503082PAD		

**RRC**

308 W. BROADWAY ST., HOBBS, NM 88240 (575) 964-8200

SCALE: 1" = 100'
DATE: 3-12-2015
SURVEYED BY: GB
DRAWN BY: CMJ
APPROVED BY: RMH
SHEET : 1 OF 1

# VICINITY MAP

NOT TO SCALE

**BOSE IKARD 4 STATE COM #22H**



*SECTION 4, TWP. 17 SOUTH, RGE. 29 EAST,  
N. M. P. M., EDDY CO., NEW MEXICO*

OPERATOR: COG Operating, LLC  
 LEASE: Bose Ikard 4 State Com  
 WELL NO.: 22H

LOCATION: 920' FNL & 150' FWL  
 ELEVATION: 3604'

Firm No.: TX 10193838 NM 4655451

Copyright 2015 - All Rights Reserved

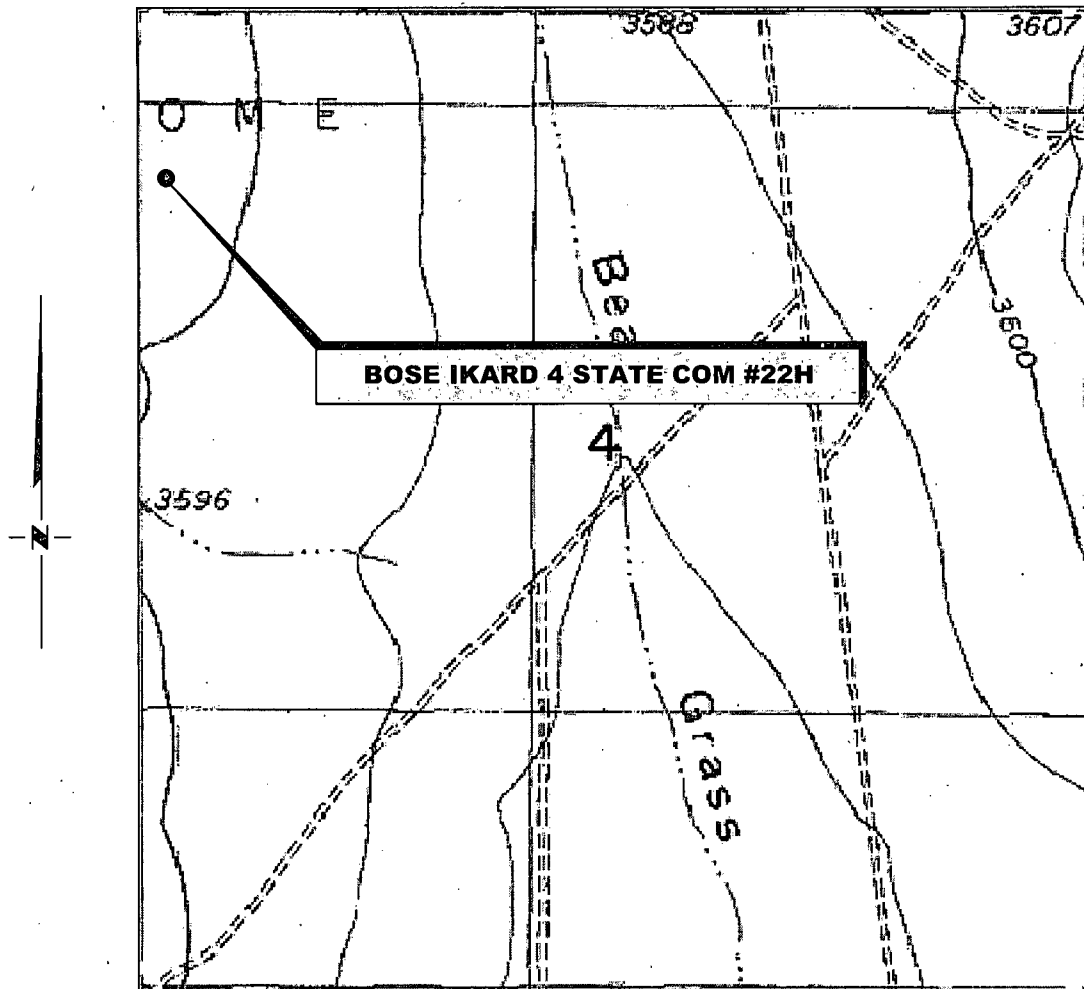
NO.	REVISION	DATE
JOB NO.: LS1503082		
DWG. NO.: 1503082VM		

# RRC

308 W. BROADWAY ST., HOBBS, NM 88240 (575) 964-8200

SCALE: NTS
DATE: 3-12-2015
SURVEYED BY: GB
DRAWN BY: CMJ
APPROVED BY: RMH
SHEET : 1 OF 1

# LOCATION VERIFICATION MAP



*SECTION 4, TWP. 17 SOUTH, RGE. 29 EAST,  
N. M. P. M., EDDY CO., NEW MEXICO*

OPERATOR: COG Operating, LLC  
 LEASE: Bose Ikard 4 State Com  
 WELL NO.: 22H  
 ELEVATION: 3604'

LOCATION: 920' FNL & 150' FWL  
 CONTOUR INTERVAL: 10'  
 USGS TOPO. SOURCE MAP:  
Red Lake SE, NM (1955)

Firm No.: TX 10193838 NM 4655451

Copyright 2015 - All Rights Reserved

NO.	REVISION	DATE
JOB NO.: LS1503082		
DWG. NO.: 1503082LVM		

# RRC

308 W. BROADWAY ST., HOBBS, NM 88240 (575) 964-8200

SCALE: 1" = 1000'  
 DATE: 3-12-2015  
 SURVEYED BY: GB  
 DRAWN BY: CMJ  
 APPROVED BY: RMH  
 SHEET : 1 OF 1



NM OIL CONSERVATION  
ARTESIA DISTRICT

APR 13 2015

RECEIVED

**COG Operating LLC  
NEW MEXICO SHELF**

EDDY COUNTY, NM

EMPIRE

BOSE IKARD 4 STATE COM #22H

OWB

Plan: PWP0

SHL: 920' FNL, 150' FWL, SEC. 4, T17S, R29E, LOT 4

PP: 922' FNL, 330' FWL, SEC. 4, T17S, R29E, LOT 4

BHL: 986' FNL, 330' FEL, SEC. 4, T17S, R29E, LOT 1

**Standard Planning Report**

27 March, 2015



COG Operating LLC  
Planning Report

Database:	EDM Users	Local Co-ordinate Reference:	Well: BOSE IKARD 4 STATE COM #22H
Company:	NEW MEXICO SHELF	TVD Reference:	RKB=3604+12 @ 3616.0usft (TBD)
Project:	EDDY COUNTY, NM	MD Reference:	RKB=3604+12 @ 3616.0usft (TBD)
Site:	EMPIRE	North Reference:	Grid
Well:	BOSE IKARD 4 STATE COM #22H	Survey Calculation Method:	Minimum Curvature
Wellbore:	OWB		
Design:	PWP0		

Project:	EDDY COUNTY, NM		
Map System:	US State Plane 1927 (Exact solution)	System Datum:	Mean Sea Level
Geo Datum:	NAD 1927 (NADCON CONUS)		
Map Zone:	New Mexico East 3001		

Site:	EMPIRE				
Site Position:	Map	Northing:	667,066.90 usft	Latitude:	32° 50' 0.822 N
From:		Easting:	582,960.90 usft	Longitude:	104° 3' 47.669 W
Position Uncertainty:	0.0 usft	Slot Radius:	13-3/16 "	Grid Convergence:	0.15 °

Well:	BOSE IKARD 4 STATE COM #22H					
Well Position	+N/S	12,594.2 usft	Northing:	679,661.10 usft	Latitude:	32° 52' 5.625 N
	+E/W	-7,447.4 usft	Easting:	575,513.50 usft	Longitude:	104° 5' 14.611 W
Position Uncertainty		3.0 usft	Wellhead Elevation:	0.0 usft	Ground Level:	3,604.0 usft

Wellbore:	OWB				
Magnetics	Model Name	Sample Date	Declination (°)	Dip Angle (°)	Field Strength (nT)
	WMM_2005	12/31/2009	8.04	60.73	49,116

Design:	PWP0			
Audit Notes:				
Version:	Phase:	PROTOTYPE	Tie On Depth:	0.0
Vertical Section:	Depth From (TVD) (usft)	+N/S (usft)	+E/W (usft)	Direction (°)
	0.0	0.0	0.0	90.60

Plan Sections										
Measured Depth (usft)	Inclination (°)	Azimuth (°)	Vertical Depth (usft)	+N/S (usft)	+E/W (usft)	Dogleg Rate (°/100usft)	Build Rate (°/100usft)	Turn Rate (°/100usft)	TFO (°)	Target
0.0	0.00	0.00	0.0	0.0	0.0	0.00	0.00	0.00	0.00	
4,079.1	0.00	0.00	4,079.1	0.0	0.0	0.00	0.00	0.00	0.00	
4,906.6	91.00	90.60	4,600.0	-5.6	530.1	11.00	11.00	0.00	90.60	
9,160.9	91.00	90.60	4,525.6	-50.3	4,783.5	0.00	0.00	0.00	0.00	PBHL-Bose Ikard 4 S:



COG Operating LLC  
Planning Report

Database:	EDM:Users	Local Co-ordinate Reference:	Well:BOSE KARD 4 STATE COM #22H
Company:	NEW MEXICO SHELF	TVD Reference:	RKB=3604+12 @ 3616.0usft (TBD)
Project:	EDDY COUNTY, NM	MD Reference:	RKB=3604+12 @ 3616.0usft (TBD)
Site:	EMPIRE	North Reference:	Grid
Well:	BOSE KARD 4 STATE COM #22H	Survey Calculation Method:	Minimum Curvature
Wellbore:	OWB		
Design:	PWR0		

Planned Survey										
Measured Depth (usft)	Inclination (°)	Azimuth (°)	Vertical Depth (usft)	+N/-S (usft)	+E/-W (usft)	Vertical Section (usft)	Dogleg Rate (°/100usft)	Build Rate (°/100usft)	Turn Rate (°/100usft)	
0.0	0.00	0.00	0.0	0.0	0.0	0.0	0.00	0.00	0.00	0.00
100.0	0.00	0.00	100.0	0.0	0.0	0.0	0.00	0.00	0.00	0.00
200.0	0.00	0.00	200.0	0.0	0.0	0.0	0.00	0.00	0.00	0.00
300.0	0.00	0.00	300.0	0.0	0.0	0.0	0.00	0.00	0.00	0.00
400.0	0.00	0.00	400.0	0.0	0.0	0.0	0.00	0.00	0.00	0.00
500.0	0.00	0.00	500.0	0.0	0.0	0.0	0.00	0.00	0.00	0.00
600.0	0.00	0.00	600.0	0.0	0.0	0.0	0.00	0.00	0.00	0.00
700.0	0.00	0.00	700.0	0.0	0.0	0.0	0.00	0.00	0.00	0.00
800.0	0.00	0.00	800.0	0.0	0.0	0.0	0.00	0.00	0.00	0.00
900.0	0.00	0.00	900.0	0.0	0.0	0.0	0.00	0.00	0.00	0.00
1,000.0	0.00	0.00	1,000.0	0.0	0.0	0.0	0.00	0.00	0.00	0.00
1,100.0	0.00	0.00	1,100.0	0.0	0.0	0.0	0.00	0.00	0.00	0.00
1,200.0	0.00	0.00	1,200.0	0.0	0.0	0.0	0.00	0.00	0.00	0.00
1,300.0	0.00	0.00	1,300.0	0.0	0.0	0.0	0.00	0.00	0.00	0.00
1,400.0	0.00	0.00	1,400.0	0.0	0.0	0.0	0.00	0.00	0.00	0.00
1,500.0	0.00	0.00	1,500.0	0.0	0.0	0.0	0.00	0.00	0.00	0.00
1,600.0	0.00	0.00	1,600.0	0.0	0.0	0.0	0.00	0.00	0.00	0.00
1,700.0	0.00	0.00	1,700.0	0.0	0.0	0.0	0.00	0.00	0.00	0.00
1,800.0	0.00	0.00	1,800.0	0.0	0.0	0.0	0.00	0.00	0.00	0.00
1,900.0	0.00	0.00	1,900.0	0.0	0.0	0.0	0.00	0.00	0.00	0.00
2,000.0	0.00	0.00	2,000.0	0.0	0.0	0.0	0.00	0.00	0.00	0.00
2,100.0	0.00	0.00	2,100.0	0.0	0.0	0.0	0.00	0.00	0.00	0.00
2,200.0	0.00	0.00	2,200.0	0.0	0.0	0.0	0.00	0.00	0.00	0.00
2,300.0	0.00	0.00	2,300.0	0.0	0.0	0.0	0.00	0.00	0.00	0.00
2,400.0	0.00	0.00	2,400.0	0.0	0.0	0.0	0.00	0.00	0.00	0.00
2,500.0	0.00	0.00	2,500.0	0.0	0.0	0.0	0.00	0.00	0.00	0.00
2,600.0	0.00	0.00	2,600.0	0.0	0.0	0.0	0.00	0.00	0.00	0.00
2,700.0	0.00	0.00	2,700.0	0.0	0.0	0.0	0.00	0.00	0.00	0.00
2,800.0	0.00	0.00	2,800.0	0.0	0.0	0.0	0.00	0.00	0.00	0.00
2,900.0	0.00	0.00	2,900.0	0.0	0.0	0.0	0.00	0.00	0.00	0.00
3,000.0	0.00	0.00	3,000.0	0.0	0.0	0.0	0.00	0.00	0.00	0.00
3,100.0	0.00	0.00	3,100.0	0.0	0.0	0.0	0.00	0.00	0.00	0.00
3,200.0	0.00	0.00	3,200.0	0.0	0.0	0.0	0.00	0.00	0.00	0.00
3,300.0	0.00	0.00	3,300.0	0.0	0.0	0.0	0.00	0.00	0.00	0.00
3,400.0	0.00	0.00	3,400.0	0.0	0.0	0.0	0.00	0.00	0.00	0.00
3,500.0	0.00	0.00	3,500.0	0.0	0.0	0.0	0.00	0.00	0.00	0.00
3,600.0	0.00	0.00	3,600.0	0.0	0.0	0.0	0.00	0.00	0.00	0.00
3,700.0	0.00	0.00	3,700.0	0.0	0.0	0.0	0.00	0.00	0.00	0.00
3,800.0	0.00	0.00	3,800.0	0.0	0.0	0.0	0.00	0.00	0.00	0.00
3,900.0	0.00	0.00	3,900.0	0.0	0.0	0.0	0.00	0.00	0.00	0.00
4,000.0	0.00	0.00	4,000.0	0.0	0.0	0.0	0.00	0.00	0.00	0.00
4,079.1	0.00	0.00	4,079.1	0.0	0.0	0.0	0.00	0.00	0.00	0.00
<b>EST:KOP 4079.1 MD: 11°/100'</b>										
4,100.0	2.30	90.60	4,100.0	0.0	0.4	0.4	11.00	11.00	0.00	0.00
4,200.0	13.30	90.60	4,198.9	-0.1	14.0	14.0	11.00	11.00	0.00	0.00
4,300.0	24.29	90.60	4,293.4	-0.5	46.1	46.1	11.00	11.00	0.00	0.00
4,400.0	35.29	90.60	4,380.1	-1.0	95.7	95.7	11.00	11.00	0.00	0.00
4,500.0	46.29	90.60	4,455.7	-1.7	161.0	161.0	11.00	11.00	0.00	0.00
4,525.6	49.11	90.60	4,472.9	-1.9	179.9	179.9	11.00	11.00	0.00	0.00
<b>PP: 4525.6 MD</b>										
4,600.0	57.29	90.60	4,517.4	-2.5	239.4	239.4	11.00	11.00	0.00	0.00
4,700.0	68.29	90.60	4,563.1	-3.5	328.2	328.2	11.00	11.00	0.00	0.00
4,800.0	79.28	90.60	4,591.0	-4.5	424.1	424.1	11.00	11.00	0.00	0.00
4,900.0	90.28	90.60	4,600.1	-5.5	523.5	523.5	11.00	11.00	0.00	0.00



COG Operating LLC  
Planning Report

Database:	EDM Users	Local Co-ordinate Reference:	Well BOSE IKARD 4 STATE COM #22H
Company:	NEW MEXICO SHELF	TVD Reference:	RKB=3604+12 @ 3616.0usft (TBD)
Project:	EDDY COUNTY -NM	MD Reference:	RKB=3604+12 @ 3616.0usft (TBD)
Site:	EMPIRE	North Reference:	Grid
Well:	BOSE IKARD 4 STATE COM #22H	Survey Calculation Method:	Minimum Curvature
Wellbore:	OWB		
Design:	PWR0		

Planned Survey									
Measured Depth (usft)	Inclination (°)	Azimuth (°)	Vertical Depth (usft)	+N/-S (usft)	+E/-W (usft)	Vertical Section (usft)	Dogleg Rate (°/100usft)	Build Rate (°/100usft)	Turn Rate (°/100usft)
4,906.6	91.00	90.60	4,600.0	-5.6	530.1	530.1	10.92	10.92	0.00
<b>EOC: 4906.6; MD: 4600; TVD: 91; INC: 90.60; AZI:</b>									
5,000.0	91.00	90.60	4,598.4	-6.6	623.5	623.5	0.00	0.00	0.00
5,100.0	91.00	90.60	4,596.6	-7.6	723.5	723.5	0.00	0.00	0.00
5,200.0	91.00	90.60	4,594.9	-8.7	823.4	823.5	0.00	0.00	0.00
5,300.0	91.00	90.60	4,593.1	-9.7	923.4	923.5	0.00	0.00	0.00
5,400.0	91.00	90.60	4,591.4	-10.8	1,023.4	1,023.5	0.00	0.00	0.00
5,500.0	91.00	90.60	4,589.6	-11.8	1,123.4	1,123.4	0.00	0.00	0.00
5,600.0	91.00	90.60	4,587.9	-12.9	1,223.4	1,223.4	0.00	0.00	0.00
5,700.0	91.00	90.60	4,586.1	-13.9	1,323.3	1,323.4	0.00	0.00	0.00
5,800.0	91.00	90.60	4,584.4	-15.0	1,423.3	1,423.4	0.00	0.00	0.00
5,900.0	91.00	90.60	4,582.6	-16.0	1,523.3	1,523.4	0.00	0.00	0.00
6,000.0	91.00	90.60	4,580.9	-17.1	1,623.3	1,623.4	0.00	0.00	0.00
6,100.0	91.00	90.60	4,579.1	-18.1	1,723.3	1,723.3	0.00	0.00	0.00
6,200.0	91.00	90.60	4,577.4	-19.2	1,823.2	1,823.3	0.00	0.00	0.00
6,300.0	91.00	90.60	4,575.6	-20.2	1,923.2	1,923.3	0.00	0.00	0.00
6,400.0	91.00	90.60	4,573.9	-21.3	2,023.2	2,023.3	0.00	0.00	0.00
6,500.0	91.00	90.60	4,572.1	-22.3	2,123.2	2,123.3	0.00	0.00	0.00
6,600.0	91.00	90.60	4,570.4	-23.4	2,223.1	2,223.3	0.00	0.00	0.00
6,700.0	91.00	90.60	4,568.6	-24.4	2,323.1	2,323.3	0.00	0.00	0.00
6,800.0	91.00	90.60	4,566.9	-25.5	2,423.1	2,423.2	0.00	0.00	0.00
6,900.0	91.00	90.60	4,565.1	-26.5	2,523.1	2,523.2	0.00	0.00	0.00
7,000.0	91.00	90.60	4,563.4	-27.6	2,623.1	2,623.2	0.00	0.00	0.00
7,100.0	91.00	90.60	4,561.6	-28.6	2,723.0	2,723.2	0.00	0.00	0.00
7,200.0	91.00	90.60	4,559.9	-29.7	2,823.0	2,823.2	0.00	0.00	0.00
7,300.0	91.00	90.60	4,558.1	-30.7	2,923.0	2,923.2	0.00	0.00	0.00
7,400.0	91.00	90.60	4,556.4	-31.8	3,023.0	3,023.1	0.00	0.00	0.00
7,500.0	91.00	90.60	4,554.6	-32.8	3,123.0	3,123.1	0.00	0.00	0.00
7,600.0	91.00	90.60	4,552.9	-33.9	3,222.9	3,223.1	0.00	0.00	0.00
7,700.0	91.00	90.60	4,551.1	-34.9	3,322.9	3,323.1	0.00	0.00	0.00
7,800.0	91.00	90.60	4,549.4	-36.0	3,422.9	3,423.1	0.00	0.00	0.00
7,900.0	91.00	90.60	4,547.6	-37.0	3,522.9	3,523.1	0.00	0.00	0.00
8,000.0	91.00	90.60	4,545.9	-38.1	3,622.9	3,623.1	0.00	0.00	0.00
8,100.0	91.00	90.60	4,544.2	-39.1	3,722.8	3,723.0	0.00	0.00	0.00
8,200.0	91.00	90.60	4,542.4	-40.2	3,822.8	3,823.0	0.00	0.00	0.00
8,300.0	91.00	90.60	4,540.7	-41.2	3,922.8	3,923.0	0.00	0.00	0.00
8,400.0	91.00	90.60	4,538.9	-42.3	4,022.8	4,023.0	0.00	0.00	0.00
8,500.0	91.00	90.60	4,537.2	-43.4	4,122.8	4,123.0	0.00	0.00	0.00
8,600.0	91.00	90.60	4,535.4	-44.4	4,222.7	4,223.0	0.00	0.00	0.00
8,700.0	91.00	90.60	4,533.7	-45.5	4,322.7	4,322.9	0.00	0.00	0.00
8,800.0	91.00	90.60	4,531.9	-46.5	4,422.7	4,422.9	0.00	0.00	0.00
8,900.0	91.00	90.60	4,530.2	-47.6	4,522.7	4,522.9	0.00	0.00	0.00
9,000.0	91.00	90.60	4,528.4	-48.6	4,622.6	4,622.9	0.00	0.00	0.00
9,100.0	91.00	90.60	4,526.7	-49.7	4,722.6	4,722.9	0.00	0.00	0.00
9,160.9	91.00	90.60	4,525.6	-50.3	4,783.5	4,783.8	0.00	0.00	0.00
<b>PBHL: 9160.9; MD: 4525.6; TVD:</b>									





COG Operating LLC  
Planning Report

Database:	EDM Users	Local Co-ordinate Reference:	Well: BOSE IKARD 4 STATE.COM #22H
Company:	NEW MEXICO SHELF	TVD Reference:	RKB=3604+12 @ 3616.0usft (TBD)
Project:	EDDY COUNTY -NM	MD Reference:	RKB=3604+12 @ 3616.0usft (TBD)
Site:	EMPIRE	North Reference:	Grid
Well:	BOSE IKARD 4 STATE.COM #22H	Survey Calculation Method:	Minimum Curvature
Wellbore:	OWB		
Design:	PWFO		

Design Targets										
Target Name	hit/miss target	Dip Angle (°)	Dip Dir. (°)	TVD (usft)	+N/S (usft)	+E/W (usft)	Northing (usft)	Easting (usft)	Latitude	Longitude
PBHL-Bose Ikard 4 Stat		0.00	0.00	4,525.6	-50.3	4,783.5	679,610.80	580,297.00	32° 52' 5.014 N	104° 4' 18.527 W
- plan hits target center										
- Point										

Plan Annotations				
Measured Depth (usft)	Vertical Depth (usft)	Local Coordinates		Comment
		+N/S (usft)	+E/W (usft)	
4,079.1	4,079.1	0.0	0.0	EST KOP, 4079.1' MD, 11"/100'
4,525.6	4,472.9	-1.9	179.9	PP, 4525.6' MD
4,906.6	4,600.0	-5.6	530.1	EOC, 4906.6' MD, 4600' TVD, 91° INC, 90.60° AZI
9,160.9	4,525.6	-50.3	4,783.5	PBHL, 9160.9' MD, 4525.6' TVD



Project: EDDY COUNTY, NM  
 Site: EMPIRE  
 Well: BOSE IKARD 4 STATE COM #22H  
 Wellbore: OWB  
 Design: PWP0

REFERENCE INFORMATION

Co-ordinate (N/E) Reference: Well BOSE IKARD 4 STATE COM #22H, Grid North  
 Vertical (TVD) Reference: RKB=3604+12 @ 3616.0usft (TBD)  
 Section (VS) Reference: Slot - (0.0N, 0.0E)  
 Measured Depth Reference: RKB=3604+12 @ 3616.0usft (TBD)  
 Calculation Method: Minimum Curvature

Sec	MD	Inc	Azi	TVD	+N-S	+E-W	Dleg	SECTION DETAILS		Annotation
								TFace	VSecl Target	
1	0.0	0.00	0.00	0.0	0.0	0.0	0.00	0.00	0.0	
2	4079.1	0.00	0.00	4079.1	0.0	0.0	0.00	0.00	0.0	EST KOP, 4079.1' MD, 11°1'10"
3	4906.6	91.00	90.80	4800.0	-3.8	530.1	11.00	90.60	530.1	EOC, 4906.6' MD, 4800' TVD, 91° INC, 90.60° AZI
4	9160.9	91.00	90.80	4525.6	-50.3	4763.5	0.00	0.00	4763.5	PBHL-Bose Ikard 4 State Com #22H PBHL, 9160.9' MD, 4525.6' TVD

