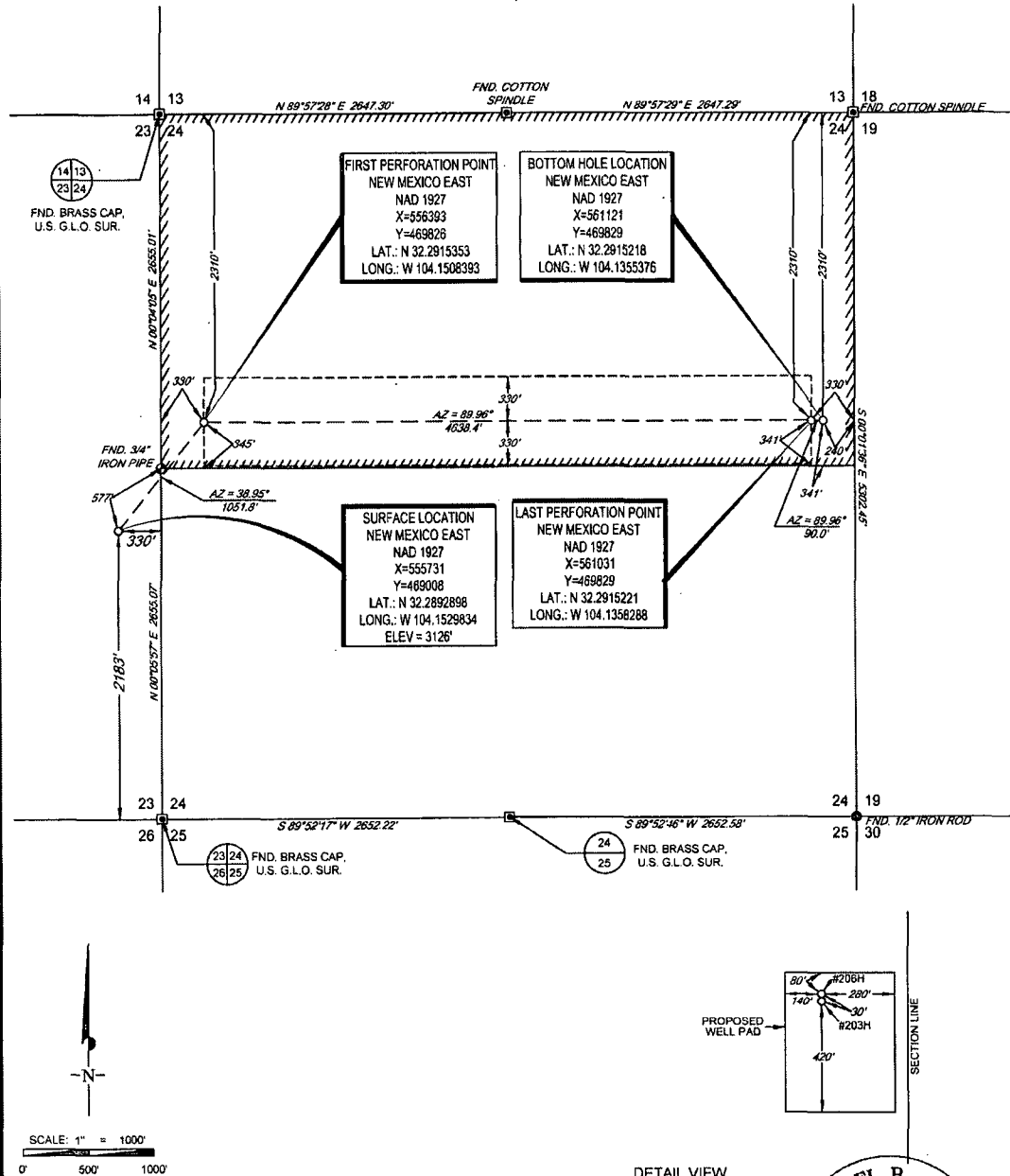


30-015-43379



SECTION 23, TOWNSHIP 23-S, RANGE 27-E, N.M.P.M.
EDDY COUNTY, NEW MEXICO



LEASE NAME & WELL NO.: DR. K 24-23S-27E RB #206H

SECTION 23 TWP 23-S RGE 27-E SURVEY N.M.P.M.
COUNTY EDDY STATE NM
DESCRIPTION 2183' FSL & 330' FEL

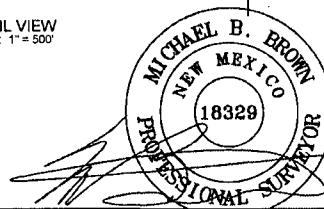
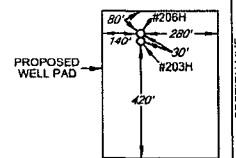
DISTANCE & DIRECTION

FROM INT. OF US-285 & W. CEDAR ST., GO NORTH ON US-285
±0.9 MILES, THENCE WEST ON W. LONDON RD ±3.1 MILES,
THENCE SOUTH ON S. COUNTRY RD. ±0.6 MILES, THENCE EAST
ON E. PROMISE LAND RD. ±0.4 MILES TO A POINT ±1150 FEET
NORTH OF LOCATION.

ALL BEARINGS, DISTANCES, AND COORDINATE VALUES CONTAINED HEREON ARE GRID
BASED UPON THE NEW MEXICO STATE PLANE COORDINATE SYSTEM, EAST ZONE OF THE
NORTH AMERICAN DATUM 1927, U.S. SURVEY FEET

THIS EASEMENT/SERVITUDE LOCATION SHOWN HEREON HAS BEEN SURVEYED ON THE GROUND
UNDER MY SUPERVISION AND PREPARED ACCORDING TO THE EVIDENCE FOUND AT THE TIME OF
SURVEY, AND DATA PROVIDED BY MATADOR PRODUCTION COMPANY. THIS CERTIFICATION IS MADE
AND LIMITED TO THOSE PERSONS OR ENTITIES SHOWN ON THE FACE OF THIS PLAT AND IS
NON-TRANSFERABLE. THIS SURVEY IS CERTIFIED FOR THIS TRANSACTION ONLY.

DETAIL VIEW
SCALE: 1" = 500'



Michael Blake Brown, P.S., No. 18329
AUGUST 13, 2015



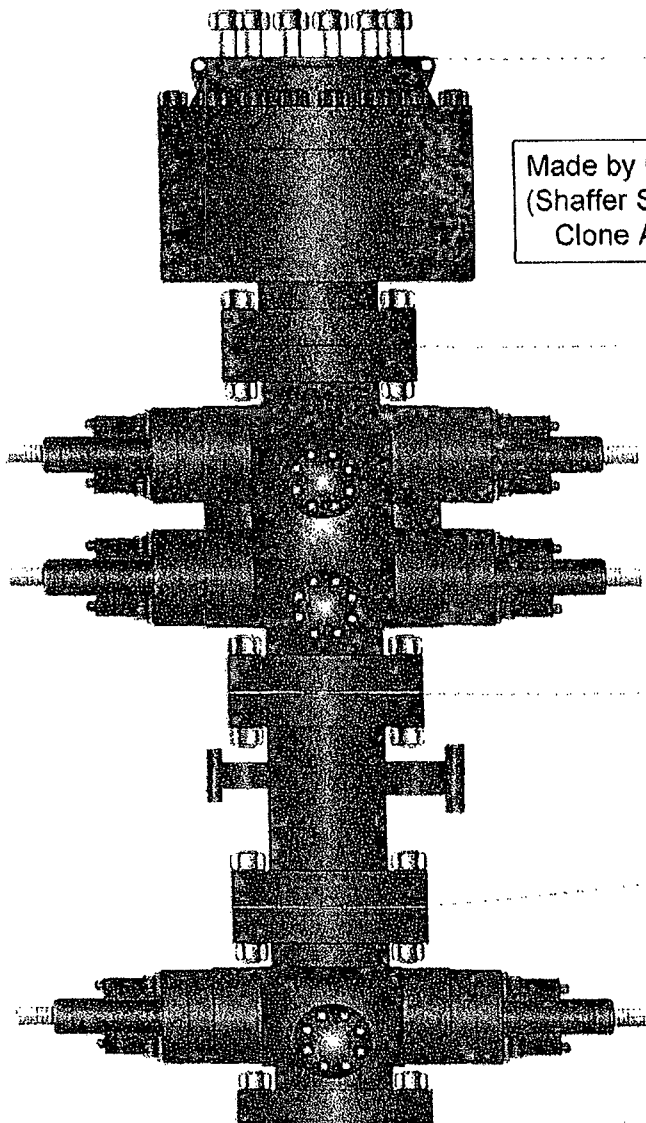
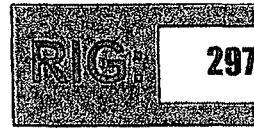
TOPOGRAPHIC
LOYALTY INNOVATION LEGACY

1400 EVERMAN PARKWAY, Ste. 187 - FT. WORTH, TEXAS 76140
TELEPHONE: (817) 744-7512 - FAX: (817) 744-7548
2803 NORTH BIG SPRING - MIDLAND, TEXAS 79705
TELEPHONE: (432) 682-1553 OR (800) 767-1853 - FAX: (432) 682-1743
WWW.TOPOGRAPHIC.COM



PATTERSON-UTI

Well Control



Made by Cameron
(Shaffer Spherical)
Clone Annular

PATTERSON-UTI # PS2-628

STYLE: New Shaffer Spherical

BORE 13 5/8" PRESSURE 5,000

HEIGHT: 48 1/2" WEIGHT: 13,800 lb

PATTERSON-UTI # PC2-128

STYLE: New Cameron Type

BORE 13 5/8" PRESSURE 10,000

RAMS: TOP 5" Pipe BTM Blind

HEIGHT: 66 5/8" WEIGHT: 24,000

Length 40" Outlets 4" 10M

DSA 4" 10M x 2" 10M

PATTERSON-UTI # PC2-228

STYLE: New Cameron Type

BORE 13 5/8" PRESSURE 10,000

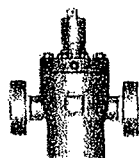
RAMS: 5" Pipe

HEIGHT: 41 5/8" WEIGHT: 13,000

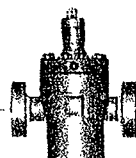
WING VALVES



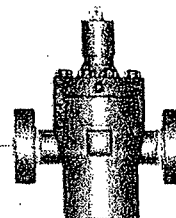
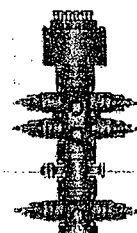
2" Check Valve



2" Manual Valve



2" Manual Valve



4" Manual Valve



4" Hy