

PLEASE EXPEDITE

SUBMIT IN TRIPLICATE\*

(Other instructions on reverse side)

FORM APPROVED

OMB NO. 1004-0136

Expires: February 28, 1995

UNITED STATES N.M. Oil Cons. Div.-Dist. 2

DEPARTMENT OF THE INTERIOR

BUREAU OF LAND MANAGEMENT 1301 W. Grand Avenue

LEASE DESIGNATION AND SERIAL NO.

NM-29234

## APPLICATION FOR PERMIT TO DRILL OR DEEPEN

1a. TYPE OF WORK DRILL <input checked="" type="checkbox"/> DEEPEN <input type="checkbox"/>			10. FIELD AND POOL OR WILDCAT SAND DUNES DELAWARE-WSET		
b. TYPE OF WELL OIL WELL <input checked="" type="checkbox"/> GAS WELL <input type="checkbox"/> OTHER <input type="checkbox"/> 168489 SINGLE ZONE <input checked="" type="checkbox"/> MULTIPLE ZONE <input type="checkbox"/>			7. UNIT AGREEMENT NAME 32272		
2. NAME OF OPERATOR RICKS EXPLORATION, INC. (GREG WILKES 915-683-7443)			8. FARM OR LEASE NAME WELL NO. LOTOS "8" FEDERAL # 803		
3. ADDRESS AND TELEPHONE NO. 110 WEST LOUISIANA SUITE 410 MIDLAND, TEXAS 79701 (915-683-7443)			9. API WELL NO. 30-015-32758		
4. LOCATION OF WELL (Report location clearly and in accordance with any State requirements.)* At surface 1980' FNL & 1980' FWL SECTION 8 T24S-R31E EDDY CO. NM At proposed prod. zone SAME (F) Secretary's Potash			11. SEC., T., R., M., OR BLK. AND SURVEY OR AREA SECTION 8 T24S-R31E		
14. DISTANCE IN MILES AND DIRECTION FROM NEAREST TOWN OR POST OFFICE* Approximately 25 miles East of Carlsbad New Mexico			12. COUNTY OR PARISH EDDY C.		
15. DISTANCE FROM PROPOSED LOCATION TO NEAREST PROPERTY OR LEASE LINE, FT. (Also to nearest drlg. unit line, if any) 1980'			13. STATE NEW MEXICO		
16. NO. OF ACRES IN LEASE 640'			17. NO. OF ACRES ASSIGNED TO THIS WELL 40		
18. DISTANCE FROM PROPOSED LOCATION TO NEAREST WELL, DRILLING COMPLETED, OR APPLIED FOR, ON THIS LEASE, FT. 1320'			20. ROTARY OR CABLE TOOLS ROTARY		
21. ELEVATIONS (Show whether DF, RT, GR, etc.) 3500' GR. Carlsbad Controlled Water Basin			22. APPROX. DATE WORK WILL START* WHEN APPROVED		

## PROPOSED CASING AND CEMENTING PROGRAM

SIZE OF HOLE	GRADE, SIZE OF CASING	WEIGHT PER FOOT	SETTING DEPTH	QUANTITY OF CEMENT
25"	Conductor	NA	40'	Cement to surface with Redi-mix.
17½"	J-55 13 3/8"	54.5	975'	900 Sx. circulate cement to sur.
11"	J-55 8 5/8"	32	4300'	1100 Sx " " " "
7 7/8"	J-55 5½"	17 & 15.5	8500'	1000 Sx. estimate TOC 4000'

1. Drill 25" hole to 40'. Set 40' of 20" conductor and cement to surface with Redi-mix.
2. Drill 17½" hole to 975'. Run and set 975' of 13 3/8" 54.5# J-55 ST&C casing. Cement with 900 Sx. of Class "C" cement + ¼# Flocele/Sx, + 2% CaCl, circulate cement to surface.
3. Drill 11" hole to 4300'. Run and set 4300' of 8 5/8" 32# J-55 ST&C casing. Cement with 600 Sx. of Class "C" Light Cement + additives, tail in with 500 Sx. of Class "C" cement + ¼# Flocele/Sx., + 2% CaCl, circulate cement to surface.
4. Drill 7 7/8" hole to 8500'. Run and set 8500' of 5½" casing as follows: 2500' of 5½" 17# J-55 LT&C, 5000' of 5½" 15.5# J-55 LT&C, 1000' of 5½" 17# J-55 LT&C. Cement with 600 Sx. of Class "C" Halco Eight cement + additives, tail in with 400 Sx. of Class "C" cement + ¼# Flocele/Sx., + 2% CaCl, estimate top of cement 4000' from surface.

APPROVAL SUBJECT TO  
GENERAL REQUIREMENTS AND  
SPECIAL REGULATIONS  
ATTACHED

ABOVE SPACE DESCRIBE PROPOSED PROGRAM: If proposal is to deepen, give data on present production zone and proposed new production zone. If proposal is to drill or open directionally, give pertinent data on subsurface locations and measured and true vertical depths. Give true vertical depth of proposed program.

SIGNED <u>Loretta Garcia</u>	TITLE <u>Agent</u>	DATE <u>03/01/03</u>
(This space for Federal or State office use)		
PERMIT NO. _____	APPROVAL DATE _____	
Application approval does not warrant or certify that the applicant holds legal or equitable title to those rights in the subject lease which would entitle the applicant to conduct operations.		
CONDITIONS OF APPROVAL IF ANY:		
APPROVED BY <u>Linda S.C. Randall</u>	TITLE <u>STATE DIRECTOR</u>	DATE <u>APR 16 2003</u>

\*See Instructions On Reverse Side

APPROVAL FOR 1 YEAR

1e 18 U.S.C. Section 1001, makes it a crime for any person knowingly and willfully to make to any department or agency of the United States any false, fictitious or fraudulent statements or representations as to any matter within its jurisdiction.

DISTRICT I  
1625 N. French Dr., Hobbs, NM 88240

DISTRICT II  
811 South First, Artesia, NM 88210

DISTRICT III  
1000 Rio Brazos Rd., Aztec, NM 87410

DISTRICT IV  
2040 South Pacheco, Santa Fe, NM 87505

State of New Mexico  
Energy, Minerals and Natural Resources Department

Form C-102  
Revised March 17, 1999

Submit to Appropriate District Office  
State Lease - 4 Copies  
Fee Lease - 3 Copies

OIL CONSERVATION DIVISION

2040 South Pacheco  
Santa Fe, New Mexico 87504-2088

☐ AMENDED REPORT

WELL LOCATION AND ACREAGE DEDICATION PLAT

API Number	Pool Code 53815	Pool Name SAND DUNES DELAWARE-WEST
Property Code	Property Name LOTOS FEDERAL	Well Number 803
OGRID No. 193407	Operator Name RICKS EXPLORATION, INC.	Elevation 3500'

Surface Location

UL or lot No. F	Section 8	Township 24 S	Range 31 E	Lot Idn	Feet from the 1980	North/South line NORTH	Feet from the 1980	East/West line WEST	County EDDY
--------------------	--------------	------------------	---------------	---------	-----------------------	---------------------------	-----------------------	------------------------	----------------

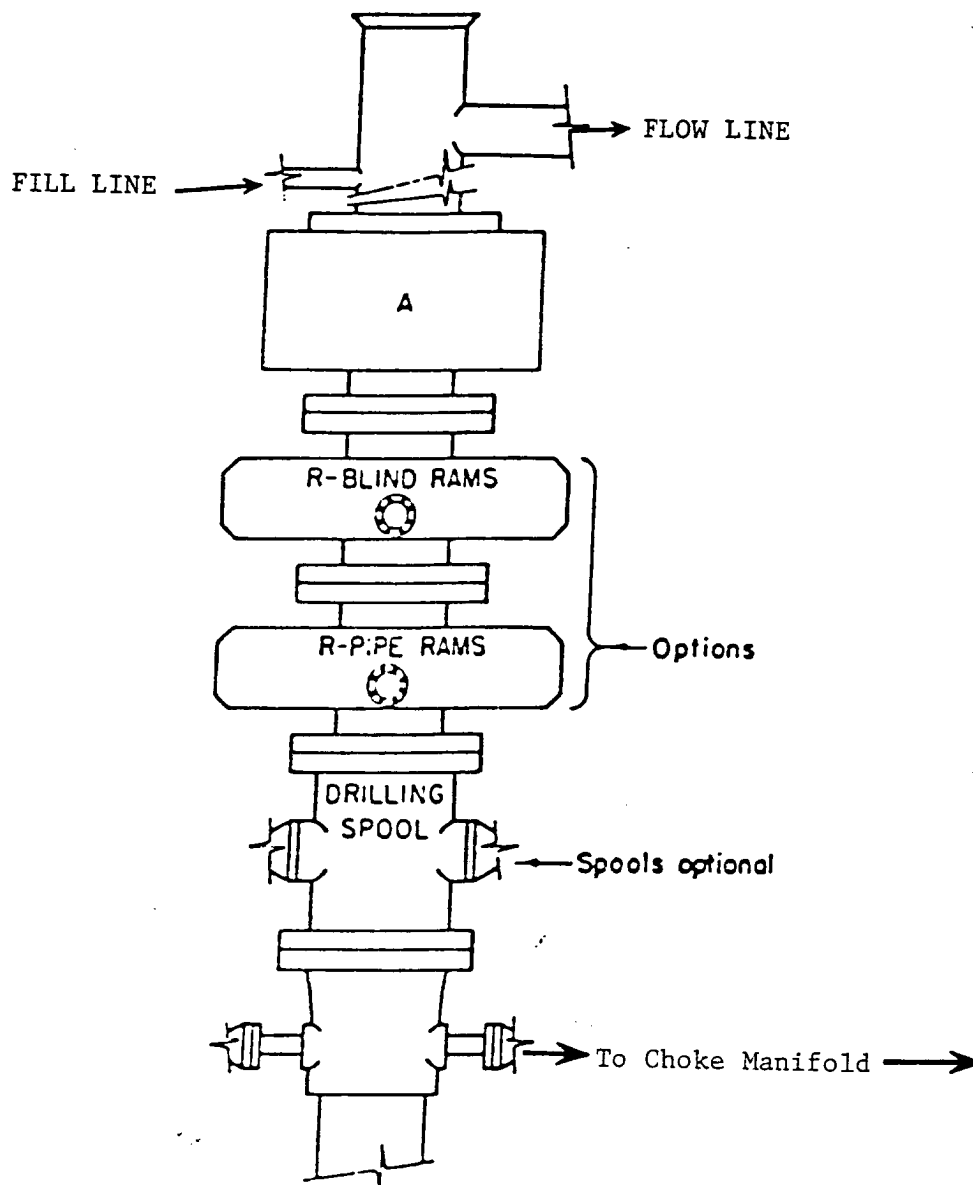
Bottom Hole Location If Different From Surface

UL or lot No.	Section	Township	Range	Lot Idn	Feet from the	North/South line	Feet from the	East/West line	County
Dedicated Acres 40	Joint or Infill	Consolidation Code	Order No.						

NO ALLOWABLE WILL BE ASSIGNED TO THIS COMPLETION UNTIL ALL INTERESTS HAVE BEEN CONSOLIDATED  
OR A NON-STANDARD UNIT HAS BEEN APPROVED BY THE DIVISION

	<p><b>OPERATOR CERTIFICATION</b></p> <p>I hereby certify the the information contained herein is true and complete to the best of my knowledge and belief.</p> <p><i>Joe T. Janica</i> Signature</p> <p>Joe T. Janica Printed Name</p> <p>Agent</p> <p>Title</p> <p>03/01/03 Date</p> <p><b>SURVEYOR CERTIFICATION</b></p> <p>I hereby certify that the well location shown on this plat was plotted from field notes of actual surveys made by me or under my supervision, and that the same is true and correct to the best of my belief.</p> <p>February 20, 2003 Date Surveyed</p> <p><i>Gary L. Jones</i> Signature &amp; Seal of Professional Surveyor</p> <p>W.O. No. 3032</p> <p>Certificate No. Gary L. Jones 7977</p> <p>JLP BASIN SURVEYS</p>
--	--

EXHIBIT "A"



**ARRANGEMENT SRRA**

900 Series  
3000 PSI WP

EXHIBIT "E"  
SKETCH OF B.O.P. TO BE USED ON

RICKS EXPLORATION, INC.  
LOTOS FEDERAL # 803  
UNIT "F" SECTION 8  
T24S-R31E EDDY CO. NM

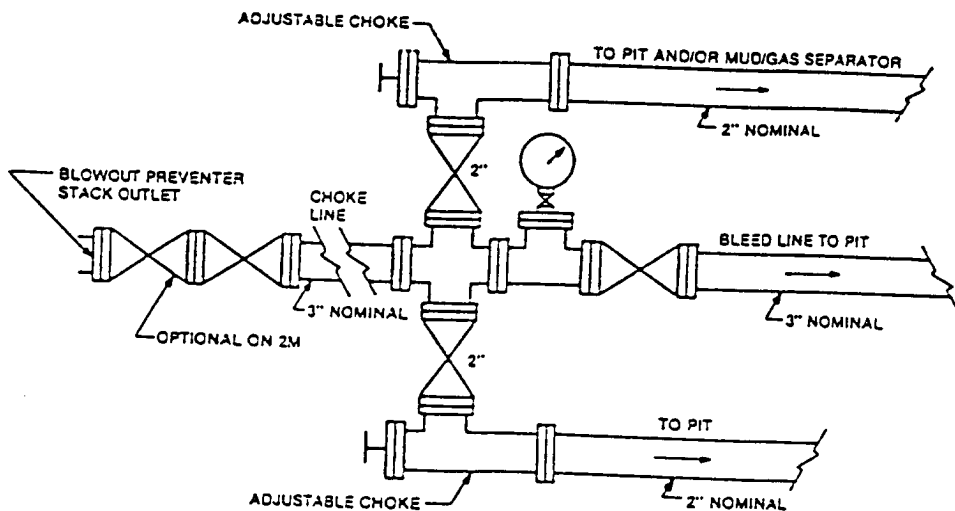


FIGURE K-1. Typical choke manifold assembly for 2M and 3M rated working pressure service — surface installation.

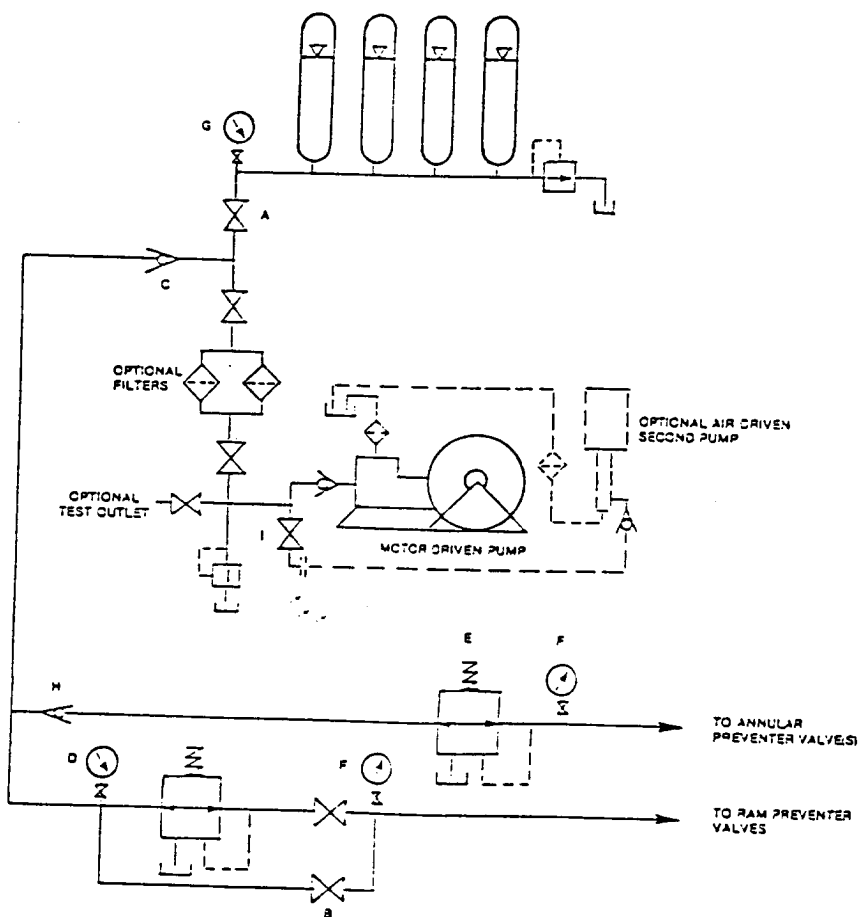


FIGURE K6-1. The schematic sketch of an accumulator system shows required and optional components.

EXHIBIT "E-1"  
CHOKE MANIFOLD & CLOSING UNIT

RICKS EXPLORATION, INC.  
LOTOS FEDERAL # 803  
UNIT "F" SECTION 8  
T24S-R31E EDDY CO. NM