

30-015-30993

From: "Ann Ritchie" <ann.ritchie@wtor.net>
To: <bryan.arrant@state.nm.us>
Sent: Friday, February 10, 2006 2:55 PM
Subject: Arrington - Orange Comet, Well #1H; Eddy County

RECEIVED
FEB 15 2006
OCD-ARTS

Bryan,

Concerning the David H. Arrington Oil & Gas, Inc., Orange Comet, Well #1H, Sec 35, T17S, R23E, Eddy County, New Mexico, please see as follows the information you requested:

1) The fresh water depth is at approximately 500'. The surface casing is to be set @ approximately 900' due to wash out zones between 750-850'.

2) As per Jim Wood, geologist for David H. Arrington Oil & Gas, Inc., the Wolfcamp top is @ 4465'. The penetration point will be 660' or greater from the South Section line.

3) The closest occupied dwelling is 4230' to the NW. As per our Location & Elevation Verification Map there is a ditch approximately 1050' to the south, which may contain water in the event it rains.

I am putting this correspondence, along with the Location & Elevation Verification Map and the Vicinity Map in the mail to you today.

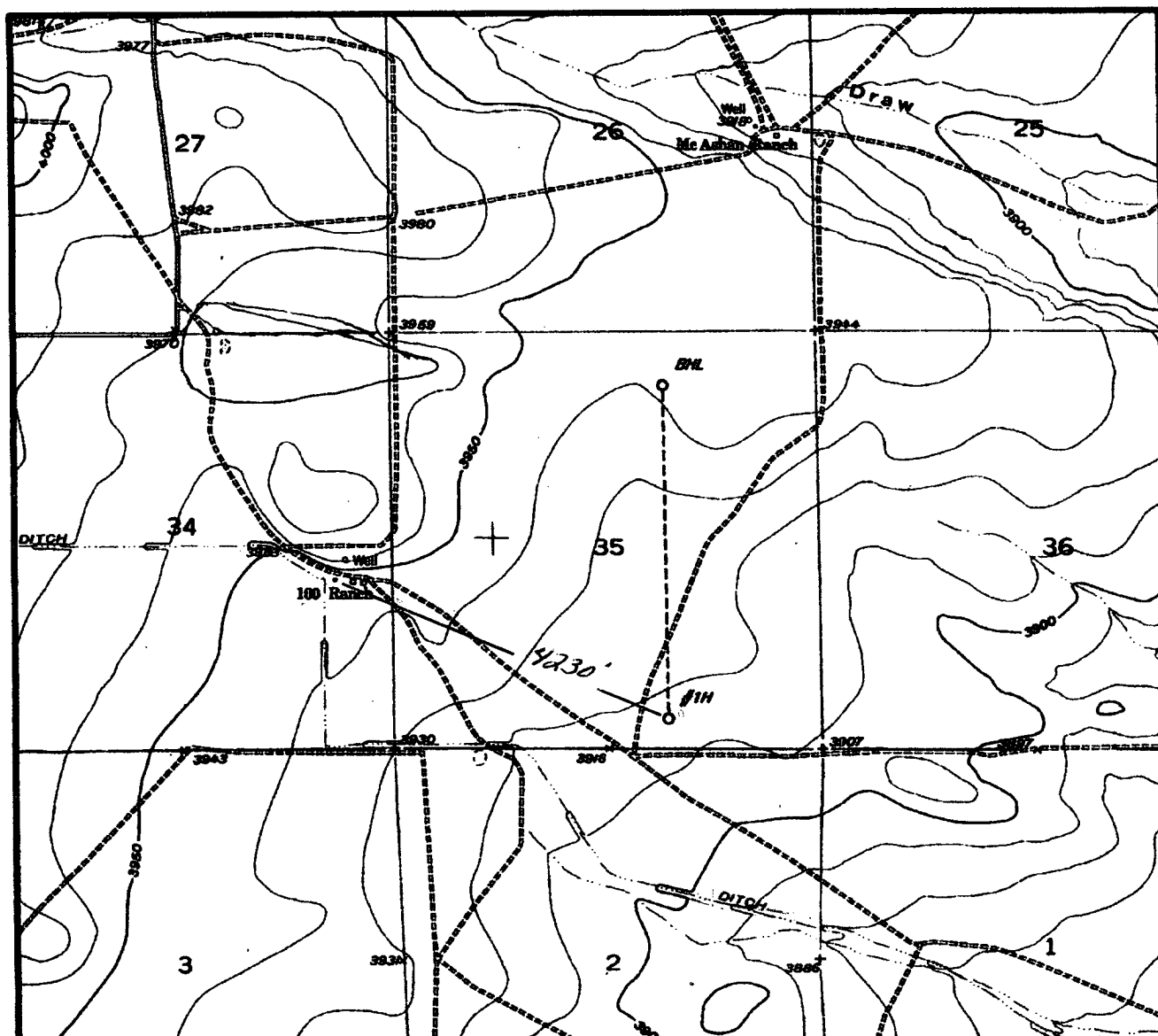
Thank you,

Ann Ritchie, Regulatory Agent
David H. Arrington Oil & Gas, Inc.
c/o P.O. Box 953
Midland, TX 79702
432 684-6381; 682-1458-fax



cc: bryan.arrant@state.nm.us

LOCATION & ELEVATION VERIFICATION MAP



SCALE : 1" = 2000'

CONTOUR INTERVAL 10'

SECTION 35 TWP 17-S RGE 23-E

SURVEY NEW MEXICO PRINCIPAL MERIDIAN

COUNTY EDDY STATE NM

DESCRIPTION 400' FSL & 1880' FEL

ELEVATION 3916'

OPERATOR DAVID H. ARRINGTON OIL & GAS

LEASE ORANGE COMET #1H

U.S.G.S. TOPOGRAPHIC MAP

HOPE, NEW MEXICO

SCALED LAT. LAT.: N 32.7854008

LONG. LONG.: W 104.6595606



TOPOGRAPHIC LAND SURVEYORS

Surveying & Mapping for the Oil & Gas Industry

2903 N. BIG SPRING
MIDLAND, TX. 79705
(800) 767-1853

2903 N. BIG SPRING
MIDLAND, TX. 79705
(800) 767-1653