

District I
1625 N. French Dr., Hobbs, NM 88240
Phone: (575) 392-6161 Fax: (575) 393-0720
District II
511 S. First St., Artesia, NM 88210
Phone: (575) 748-1253 Fax: (575) 748-9720
District III
1000 Rio Brazos Road, Aztec, NM 87410
Phone: (505) 334-6178 Fax: (505) 334-6170
District IV
1220 S. St. Francis Dr., Santa Fe, NM 87505
Phone: (505) 476-3460 Fax: (505) 476-3463

NM OIL CONSERVATION
State of New Mexico **ARTESIA DISTRICT**
Energy, Minerals & Natural Resources Department
OIL CONSERVATION DIVISION
1220 South St. Francis Dr.
Santa Fe, NM 87505

Form C-102
Revised August 1, 2011
Submit one copy to appropriate
District Office
☐ AMENDED REPORT

MAF 27 2015

RECEIVED

WELL LOCATION AND ACREAGE DEDICATION PLAT

¹ API Number 30-015-42321		² Pool Code 96217		³ Pool Name Willowlake; Bone Spring SE	
⁴ Property Code 40505		⁵ Property Name COTTONTAIL 16 STATE COM			⁶ Well Number 1H
⁷ OGRID No. 6137		⁸ Operator Name DEVON ENERGY PRODUCTION COMPANY, L.P.			⁹ Elevation 2968.6

¹⁰ Surface Location

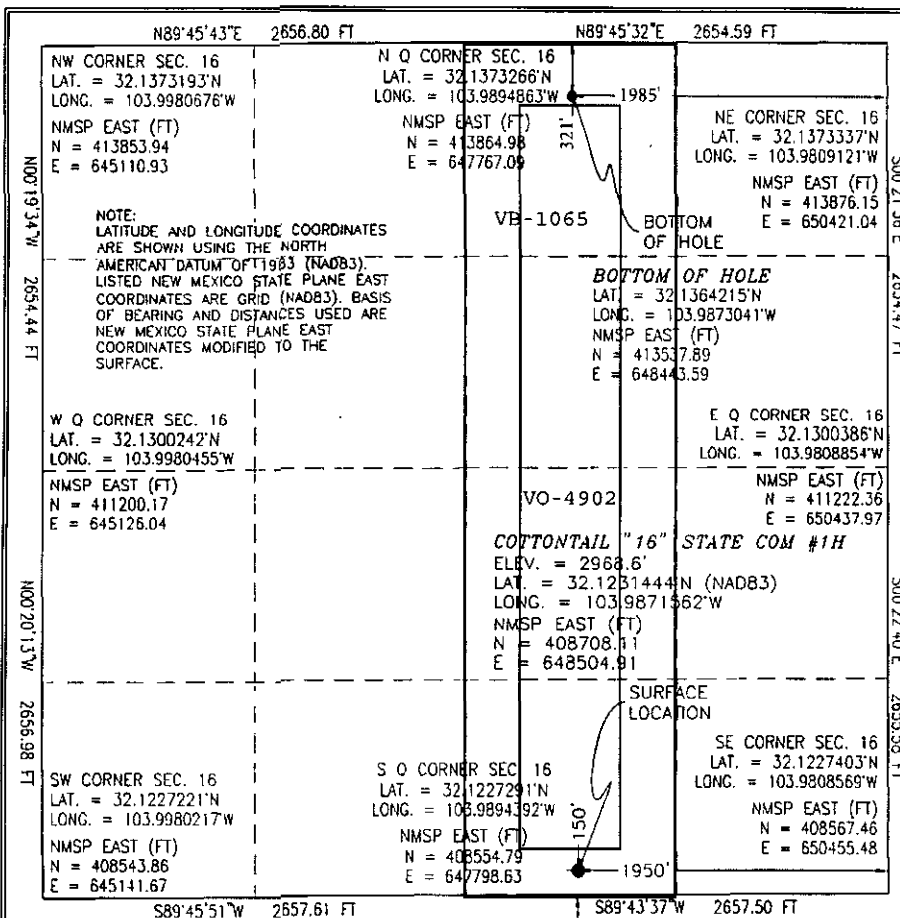
UL or lot no.	Section	Township	Range	Lot Idn	Feet from the	North/South line	Feet from the	East/West line	County
O	16	25 S	29 E		150	SOUTH	1950	EAST	EDDY

¹¹ Bottom Hole Location If Different From Surface

UL or lot no.	Section	Township	Range	Lot Idn	Feet from the	North/South line	Feet from the	East/West line	County
B	16	25 S	29 E		321	NORTH	1985	EAST	EDDY

¹² Dedicated Acres 160.00	¹³ Joint or Infill	¹⁴ Consolidation Code	¹⁵ Order No.
--	-------------------------------	----------------------------------	-------------------------

No allowable will be assigned to this completion until all interests have been consolidated or a non-standard unit has been approved by the division.



¹⁷ OPERATOR CERTIFICATION

I hereby certify that the information contained herein is true and complete to the best of my knowledge and belief, and that this organization either owns a working interest or unleased mineral interest in the land including the proposed bottom hole location or has a right to drill this well at this location pursuant to a contract with an owner of such a mineral or working interest, or to a voluntary pooling agreement or a compulsory pooling order heretofore entered by the division

Lucretia Morris 4/29/2015
Signature Date

Lucretia Morris, Regulatory Analyst

Printed Name

Lucretia.Morris@dvn.com

E-mail Address

¹⁸ SURVEYOR CERTIFICATION

I hereby certify that the well location shown on this plat was plotted from field notes of actual surveys made by me or under my supervision, and that the same is true and correct to the best of my belief.

JUNE 1, 2013

Date of Survey

William F. Jaramillo
Signature and Seal of Professional Surveyor
Certificate Number 12797
WILLIAM F. JARAMILLO, PLS 12797
REGISTERED LAND SURVEYOR

PP: 239' FSL & 1941' FEL, Sec 16, T25S, R29E

Project Area:

Producing Area: