

NM OIL CONSERVATION

ARTESIA DISTRICT

Form C-102

Revised August 1, 2011

DISTRICT I

1635 N. French Dr., NM 88240
Phone:(505)393-6161 Fax:(505)393-0220

DISTRICT II

811 S. First St., Artesia, NM 88210
Phone:(505)748-1283 Fax:(505)748-8720

DISTRICT III

1000 Rio Brazos, Aztec, NM 87410
Phone:(505)334-6176 Fax:(505)334-6170

DISTRICT IV

1220 S. St. Francis Dr., Santa Fe, NM 87505
Phone:(505)476-3460 Fax:(505)476-3462

State of New Mexico
Energy, Minerals and Natural Resources Department

OIL CONSERVATION DIVISION

1220 South St. Francis Dr.
Santa Fe, New Mexico 87505

JAN 08 2016

Submit one copy to appropriate
District Office

RECEIVED

WELL LOCATION AND ACREAGE DEDICATION PLAT

AMENDED REPORT
As drilled

API Number 30-015-42639	Pool Code 97913	Pool Name WILDCAT G-06 S2530020G B.S.
Property Code 313363	Property Name POKER LAKE UNIT CVX JV PB	Well Number 007H
GRID No. 260737	Operator Name BOPCO, L.P.	Elevation 3377'

Surface Location

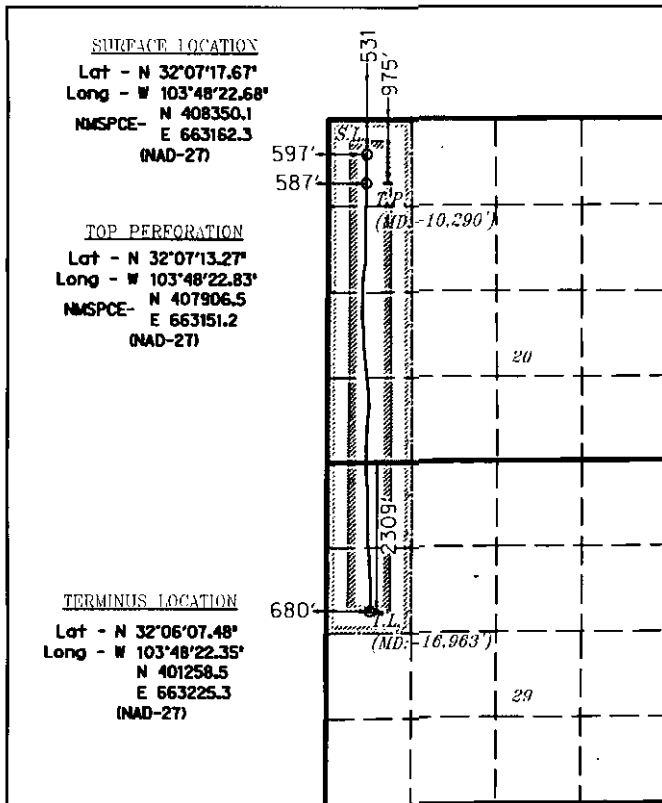
UL or lot No.	Section	Township	Range	Lot Idn	Feet from the	North/South line	Feet from the	East/West line	County
D	20	25 S	31 E		531	NORTH	597	WEST	EDDY

Bottom Hole if Different From Surface

UL or lot No.	Section	Township	Range	Lot Idn	Feet from the	North/South line	Feet from the	East/West line	County
E	29	25 S	31 E		2309	NORTH	680	WEST	EDDY

Dedicated Acres 240	Joint or Infill	Consolidation Code	Order No.
------------------------	-----------------	--------------------	-----------

NO ALLOWABLE WILL BE ASSIGNED TO THIS COMPLETION UNTIL ALL INTERESTS HAVE BEEN CONSOLIDATED
OR A NON-STANDARD UNIT HAS BEEN APPROVED BY THE DIVISION



SCALE 1"=3000'

OPERATOR CERTIFICATION

I hereby certify that the information contained herein is true and complete to the best of my knowledge and belief, and that this organization either owns a working interest or unleased mineral interest in the land including the proposed bottom hole location pursuant to a contract with an owner of such a mineral or working interest, or to a voluntary pooling agreement or a compulsory pooling order heretofore entered by the division.

Signature: *Tracie J. Cherry* Date: *01/04/16*
TRACIE J. CHERRY

Printed Name
tjcherry@basspet.com

Email Address

SURVEYOR CERTIFICATION

I hereby certify that the well location shown on this plat was plotted from field notes of actual surveys made by me or under my supervision and that the same is true and correct to the best of my knowledge and belief.

Date Surveyed: *12-12-2013*
Signature & seal: *Vasilios Kalogiropoulos*
Professional Surveyor

VASILIOS KALOGIROPOULOS
Certificate No. 22501

HALFF ASSOC., INC. 29714-W014