

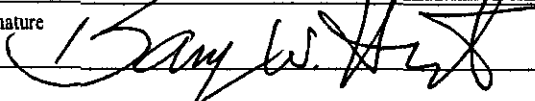

UNITED STATES
DEPARTMENT OF THE INTERIOR
BUREAU OF LAND MANAGEMENT

APPLICATION FOR PERMIT TO DRILL OR REENTER

1a. Type of work: <input checked="" type="checkbox"/> DRILL <input type="checkbox"/> REENTER		5. Lease Serial No. SHL: NM-22634, BHL: NM-21767
1b. Type of Well: <input type="checkbox"/> Oil Well <input checked="" type="checkbox"/> Gas Well <input type="checkbox"/> Other <input checked="" type="checkbox"/> Single Zone <input type="checkbox"/> Multiple Zone		6. If Indian, Allottee or Tribe Name
2. Name of Operator RKI EXPLORATION & PRODUCTION, LLC.		7. If Unit or CA Agreement, Name and No.
3a. Address 210 PARK AVENUE, SUITE 900 OKLAHOMA CITY, OKLAHOMA 73102		8. Lease Name and Well No. East Pecos Federal Com 22-13H
3b. Phone No. (include area code) (405) 987-2226 (Sam McCurdy)		9. API Well No. 30-015-43585
4. Location of Well (Report location clearly and in accordance with any State requirements.)* At surface 310 FSL & 1310 FEL (FIRST TAKE: 330 FSL & 1452 FEL). At proposed prod. zone 230 FNL & 1452 FEL (LAST TAKE: 330 FNL & 1452 FEL).		10. Field and Pool, or Exploratory Undesignated Wolfcamp
14. Distance in miles and direction from nearest town or post office* 15 MILES SOUTHEAST OF MALAGA, NM		11. Sec., T. R. M. or Blk. and Survey or Area SECTION 22, T. 26 S., R. 29 E.
15. Distance from proposed* location to nearest property or lease line, ft. (Also to nearest drig. unit line, if any). SHL: 310' BHL: 230'	16. No. of acres in lease BHL: 160 SHL: 480	17. Spacing Unit dedicated to this well 320
18. Distance from proposed location* to nearest well, drilling, completed, applied for, on this lease, ft. SHL: 25' BHL: 792'	19. Proposed Depth TVD: 10,040' MD: 14,561'	20. BLM/BIA Bond No. on file NLM-NMB-000460
21. Elevations (Show whether DF, KDB, RT, GL, etc.) 2882' GL	22. Approximate date work will start* ASAP	23. Estimated duration 35 DAYS
24. Attachments		

The following, completed in accordance with the requirements of Onshore Oil and Gas Order No. 1, must be attached to this form:

- Well plat certified by a registered surveyor.
- A Drilling Plan.
- A Surface Use Plan (if the location is on National Forest System Lands, the SUPO must be filed with the appropriate Forest Service Office).
- Bond to cover the operations unless covered by an existing bond (Item 20 above).
- Operator certification
- Such other site specific information and/or plans as may be required by the BLM.

25. Signature 	Name (Printed/Typed) BARRY W. HUNT	Date 5/19/15
Title PERMIT AGENT FOR RKI EXPLORATION & PRODUCTION, LLC.		
Approved by (Signature) 	Name (Printed/Typed) J/ JEANETTE MARTINEZ	Date DEC 14 2015
Title FIELD MANAGER	Office CARLSBAD FIELD OFFICE	

Application approval does not warrant or certify that the applicant holds legal or equitable title to those rights in the subject lease which would entitle the applicant to conduct operations thereon.
Conditions of approval, if any, are attached.

APPROVAL FOR TWO YEARS

Title 18 U.S.C. Section 1001 and Title 43 U.S.C. Section 1212, make it a crime for any person knowingly and willfully to make to any department or agency of the United States any false, fictitious or fraudulent statements or representations as to any matter within its jurisdiction.

(Continued on page 2)

*(Instructions on page 2)

Carlsbad Controlled Water Basin

NM OIL CONSERVATION
ARTESIA DISTRICT

DEC 17 2015

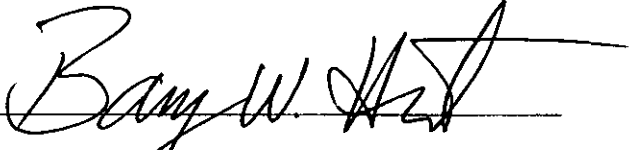
RECEIVED

Approval Subject to General Requirements
& Special Stipulations AttachedSEE ATTACHED FOR
CONDITIONS OF APPROVAL

CERTIFICATION

I hereby certify that I, or persons under my direct supervision, have inspected the proposed drill site and access road proposed herein; that I am familiar with the conditions that presently exist; that I have full knowledge of State and Federal laws applicable to this operation; that the statements made in this APD package are, to the best of my knowledge, true and correct, and that the work associated with the operations proposed herein will be performed in conformity with this APD package and the terms and conditions under which it is approved. I also certify that I, or RKI Exploration and Production, LLC am responsible for the operations conducted under this application. These statements are subject to the provisions of 18 U. S. C. 1001 for the filing of false statements. Executed this 18th. day of May 2015.

Signed: _____



Printed Name: Barry Hunt

Position: Agent for RKI Exploration & Production, LLC.

Address: 1403 Springs Farm Place, Carlsbad, NM 88220

Telephone: (575) 361-4078

E-mail: specialtpermitting@gmail.com

RKI Exploration & Production LLC

3817 NW Expressway, Suite 950, Oklahoma City, OK 73112
405-949-2221 Fax 405-949-2223

June 25th, 2012

To Whom It May Concern:

Please be advised that Mr. Barry Hunt has been retained by RKI Exploration & Production to sign as our agent on Application for Permit to Drill (APD) as well as Right of Way applications within the States of New Mexico and Texas.

If you have any questions or require additional information, please feel free to contact me at (405) 996-5771.

Sincerely,

A handwritten signature in cursive script, appearing to read "Charles K. Ahn".

Charles K. Ahn
EH&S/Regulatory Manager

RKI Exploration & Production LLC

210 Park Avenue, Suite 900, Oklahoma City, OK 73102
405-949-2221 Fax 405-996-5772

February 4, 2015

Bureau of Land Management
Carlsbad Field Office
620 E Greene Street
Carlsbad, NM 88220-6292

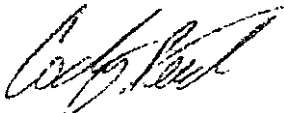
RE: Statement of Surface Use Agreement
East Pecos Lease
Section 22-26S-29E
Eddy County, New Mexico

Ladies and Gentleman:

RKI Exploration & Production LLC ("RKI") intends to file multiple APD's on the above lease with surface locations located on fee surface owned by George Ross Ranch, LLC ("Ross Ranch"). Please be advised that RKI has entered into a private agreement with Ross Ranch pertaining to RKI's oil and gas operations thereon; all activities to date, including the submission of the transmitted APD's, comply with said agreement.

Should you have any questions or comments please contact me at 405.996.5767 or via email at creid@rkixp.com.

Sincerely,
RKI EXPLORATION & PRODUCTION, LLC



Cody Reid
Land Manager - Permian

DISTRICT I
1625 N. French Dr., Hobbs, NM 88240
Phone: (575) 393-6161 Fax: (575) 391-0720

DISTRICT II
811 S. First St., Artesia, NM 88210
Phone: (575) 748-1283 Fax: (575) 748-9730

DISTRICT III
1000 Rio Brazos Rd., Aztec, NM 87410
Phone: (505) 334-6178 Fax: (505) 334-6170

DISTRICT IV
1220 S. St. Francis Dr., Santa Fe, NM 87505
Phone: (505) 476-3460 Fax: (505) 476-3462

State of New Mexico
Energy, Minerals & Natural Resources Department
OIL CONSERVATION DIVISION
1220 South St. Francis Dr.
Santa Fe, New Mexico 87505

Form C-102
Revised August 1, 2011

Submit one copy to appropriate
District Office

☐ AMENDED REPORT

WELL LOCATION AND ACREAGE DEDICATION PLAT

API Number 30-015-43585	Pool Code 72897	Pool Name Brushy Draw UNDESIGNATED WOLFCAMP (Gas)
Property Code 39386	Property Name EAST PECOS FEDERAL COM 22	Well Number 13H
OGRID No. 246289	Operator Name RKI EXPLORATION & PRODUCTION	Elevation 2882

Surface Location

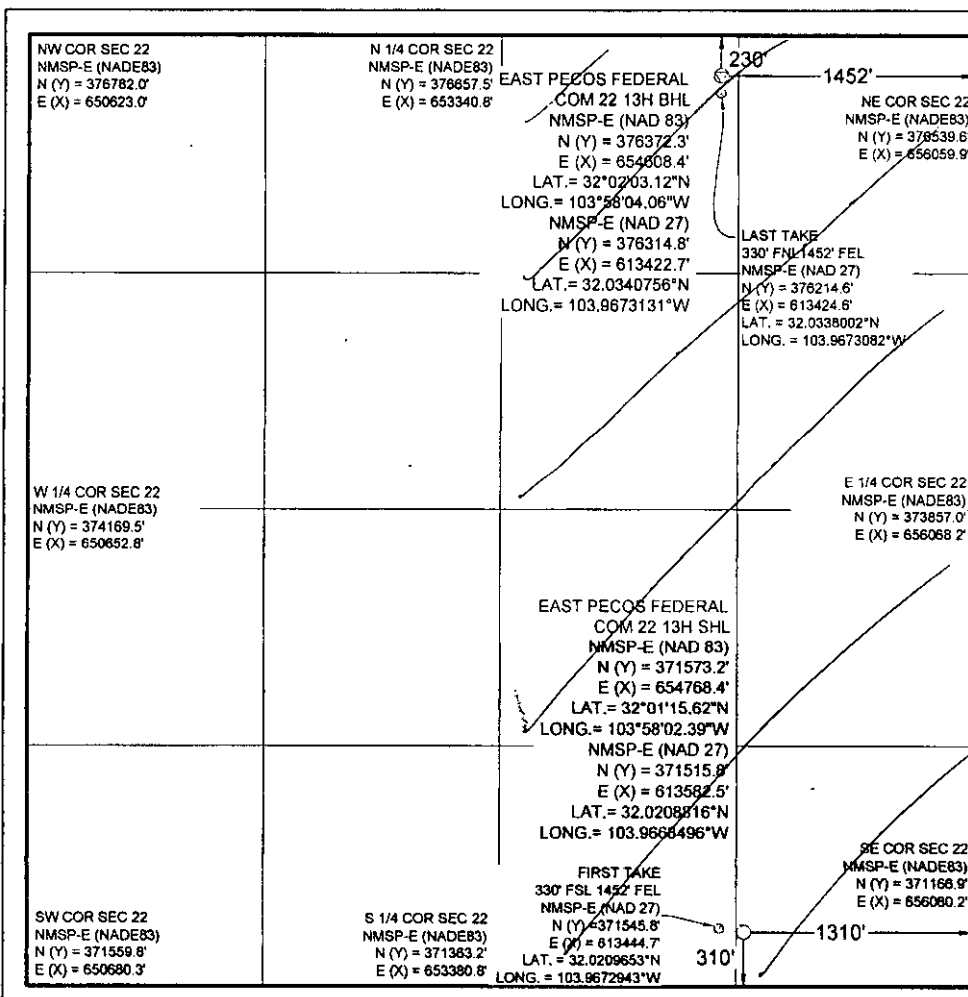
UL or lot no.	Section	Township	Range	Lot Idn	Feet from the	North/South line	Feet from the	East/West line	County
P	22	26S	29E		310	S	1310	E	EDDY

Bottom Hole Location If Different From Surface

UL or lot no.	Section	Township	Range	Lot Idn	Feet from the	North/South line	Feet from the	East/West line	County
B	22	26S	29E		230	N	1452	E	EDDY

Dedicated Acres	Joint or Infill	Consolidated Code	Order No.
320.0			

No allowable will be assigned to this completion until all interests have been consolidated or a non-standard unit has been approved by the division.



OPERATOR CERTIFICATION

I hereby certify that the information contained herein is true and complete to the best of my knowledge and belief, and that this organization either owns a working interest or unleased mineral interest in the land including the proposed bottom hole location or has a right to drill this well at this location pursuant to a contract with an owner of such a mineral or working interest, or to voluntary pooling agreement or a compulsory pooling order heretofore entered by the division.

Barry W. Hunt 5/19/15
Signature Date

Print Name

E-mail Address

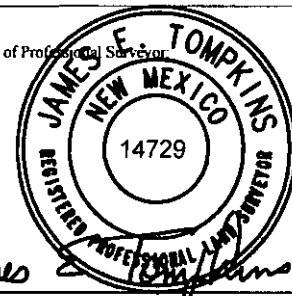
SURVEYORS CERTIFICATION

I hereby certify that the well location shown on this plat was plotted from field notes of actual surveys made by me or under my supervision, and that the same is true and correct to the best of my belief.

AUGUST 13, 2014

Date of Survey

Signature and Seal of Professional Surveyor

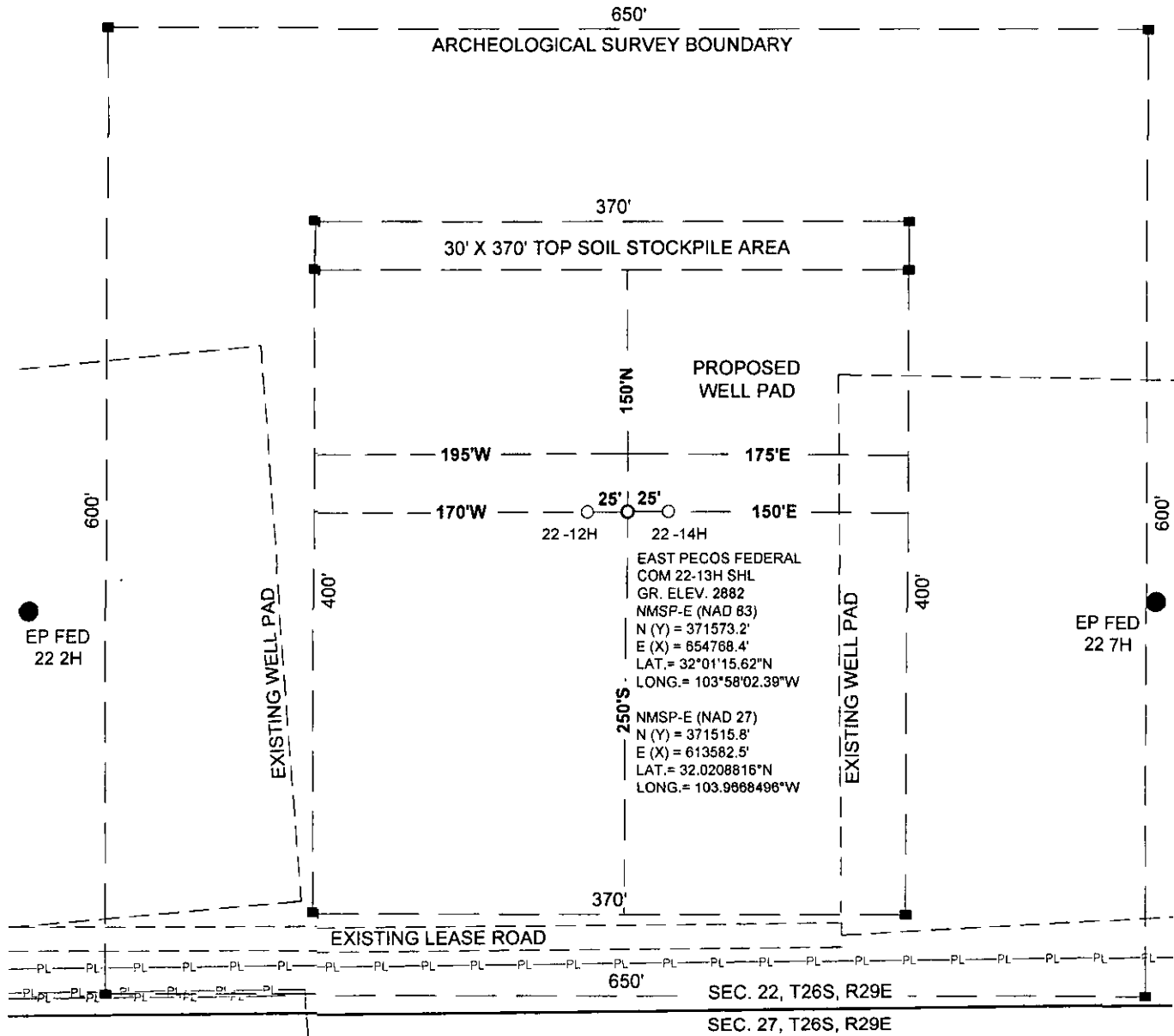


Job No. WTC50084

JAMES E. TOMPKINS 14729

Certificate Number

SITE LOCATION



0 50 100 200

GRAPHIC SCALE 1" = 100'

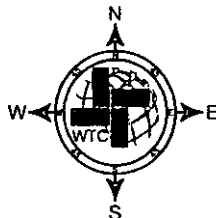
SECTION 22, T 26S, R 29E, N.M.P.M.

COUNTY: EDDY STATE: NM

DESCRIPTION: 310' FSL & 1310' FEL

OPERATOR: RKI EXPLORATION & PRODUCTION

WELL NAME: EAST PECOS FEDERAL COM 22-13H



DRIVING DIRECTIONS:

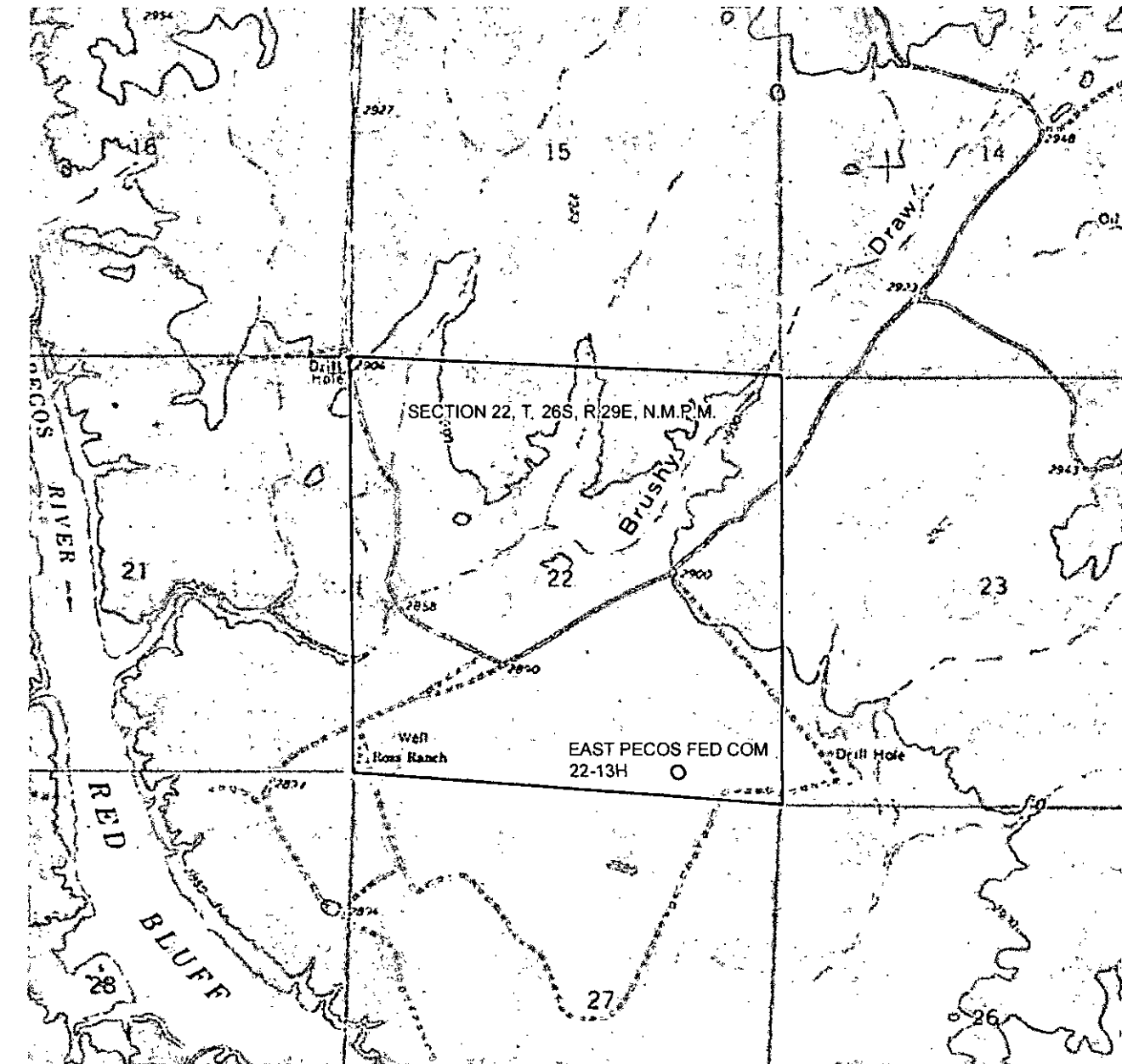
FROM THE INTERSECTION OF STATE HIGHWAY 285 AND LONGHORN COUNTY ROAD 725. GO EAST/ NORTHEAST ON LONGHORN COUNTY ROAD 725 FOR 6.7 MILES TO A "Y", STAY RIGHT. GO 0.3 MILE IN SOUTHEASTERLY DIRECTION TO A LEASE ROAD LEFT. GO EAST ON LEASE ROAD 0.3 MILE. LOCATION FLAG IS 264 FEET NORTH.



WTC, INC.
405 S.W. 1st Street
Andrews, TX 79714
(432) 523-2181



LOCATION VERIFICATION MAP



0 1000 2000 4000

GRAPHIC SCALE 1" = 2000'

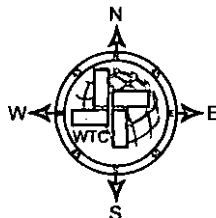
SECTION 22, T. 26S, R. 29E, N.M.P.M.

COUNTY: EDDY STATE: NM

DESCRIPTION: 310' FSL & 1310' FEL

OPERATOR: RKI EXPLORATION & PRODUCTION

WELL NAME: EAST PECOS FEDERAL COM 22-13H



DRIVING DIRECTIONS:

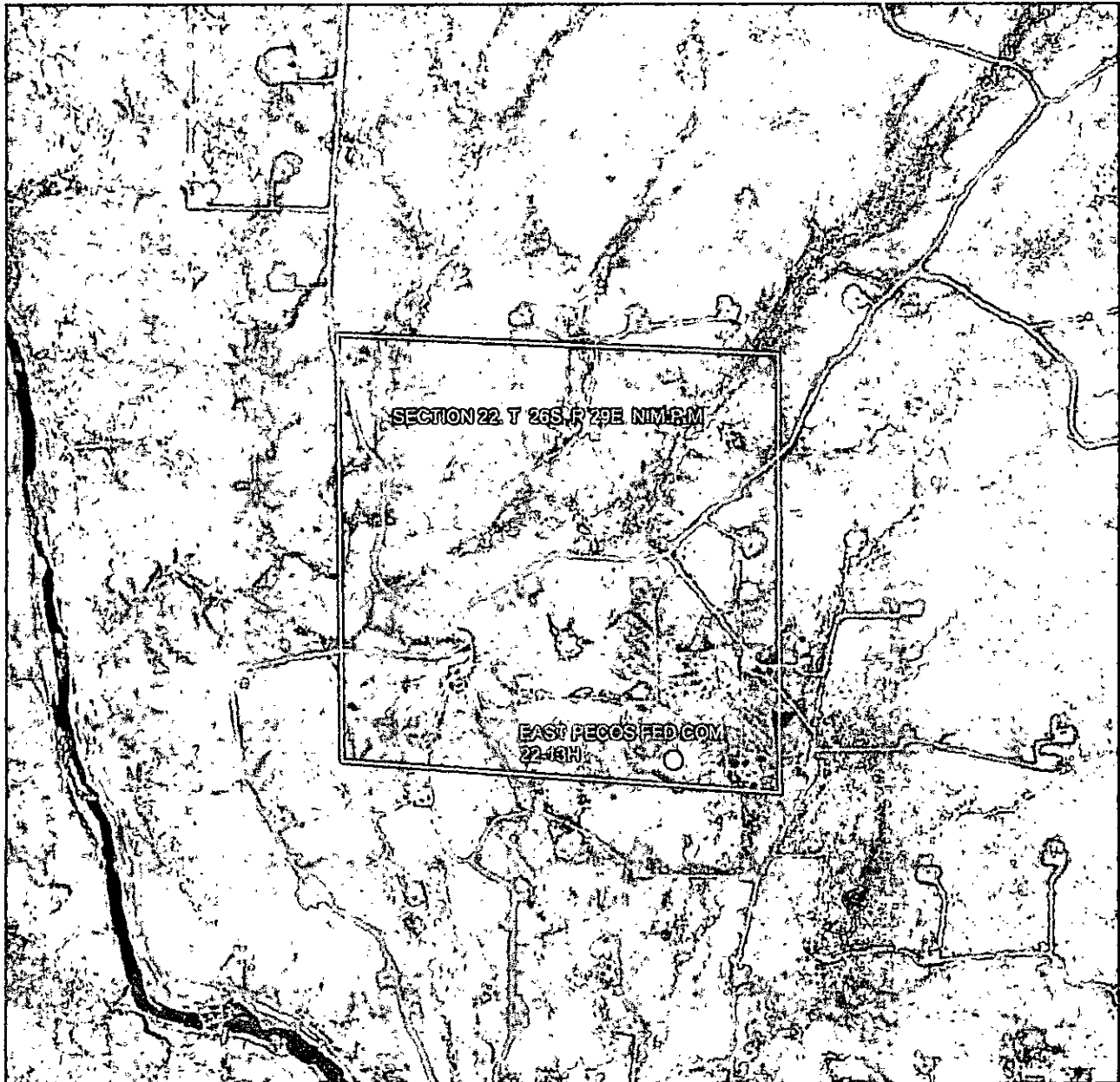
FROM THE INTERSECTION OF STATE HIGHWAY 285 AND LONGHORN COUNTY ROAD 725. GO EAST/ NORTHEAST ON LONGHORN COUNTY ROAD 725 FOR 6.7 MILES TO A "Y", STAY RIGHT. GO 0.3 MILE IN SOUTHEASTERLY DIRECTION TO A LEASE ROAD LEFT. GO EAST ON LEASE ROAD 0.3 MILE. LOCATION FLAG IS 264 FEET NORTH.



WTC, INC.
405 S.W. 1st Street
Andrews, TX 79714
(432) 523-2181



AERIAL MAP



0 1000 2000 4000

GRAPHIC SCALE 1" = 2000'

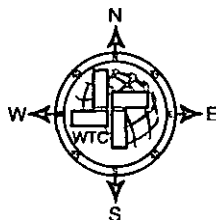
SECTION 22, T 26S, R 29E, N.M.P.M.

COUNTY: EDDY STATE: NM

DESCRIPTION: 310' FSL & 1310' FEL

OPERATOR: RKI EXPLORATION & PRODUCTION

WELL NAME: EAST PECOS FEDERAL COM 22-13H



DRIVING DIRECTIONS:

FROM THE INTERSECTION OF STATE HIGHWAY 285 AND LONGHORN COUNTY ROAD 725. GO EAST/ NORTHEAST ON LONGHORN COUNTY ROAD 725 FOR 6.7 MILES TO A "Y", STAY RIGHT. GO 0.3 MILE IN SOUTHEASTERLY DIRECTION TO A LEASE ROAD LEFT. GO EAST ON LEASE ROAD 0.3 MILE. LOCATION FLAG IS 264 FEET NORTH.

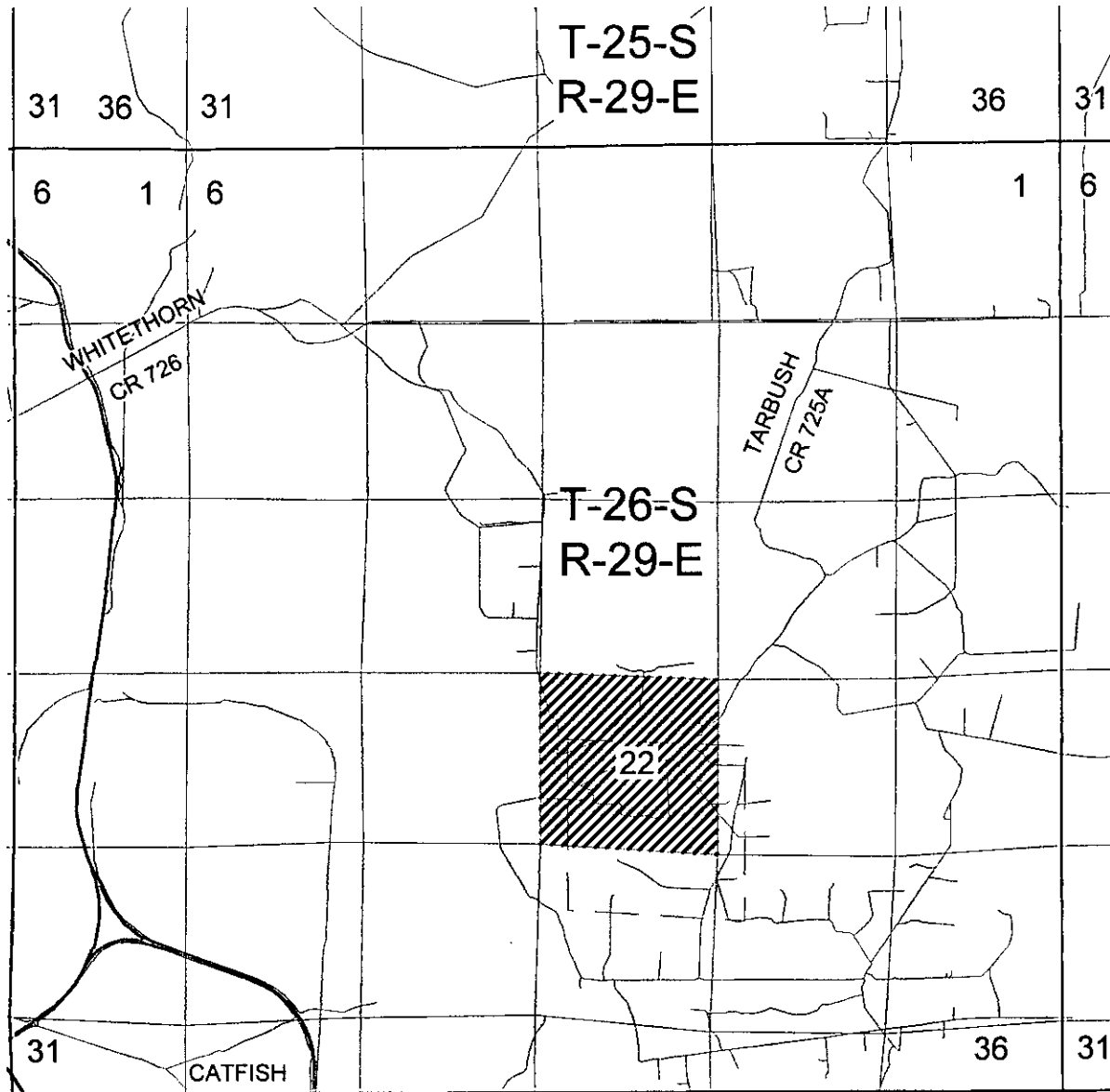


WTC, INC.
405 S.W. 1st Street
Andrews, TX 79714
(432) 523-2181



JOB No.: WTC50084

VICINITY MAP



GRAPHIC SCALE 1" = 1 MILE

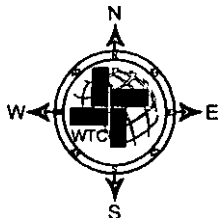
SECTION 22, T 26S, R 29E, N.M.P.M.

COUNTY: EDDY STATE: NM

DESCRIPTION: 310' FSL & 1310' FEL

OPERATOR: RKI EXPLORATION & PRODUCTION

WELL NAME: EAST PECOS FEDERAL COM 22-13H



DRIVING DIRECTIONS:

FROM THE INTERSECTION OF STATE HIGHWAY 285 AND LONGHORN COUNTY ROAD 725. GO EAST/ NORTHEAST ON LONGHORN COUNTY ROAD 725 FOR 6.7 MILES TO A "Y", STAY RIGHT. GO 0.3 MILE IN SOUTHEASTERLY DIRECTION TO A LEASE ROAD LEFT. GO EAST ON LEASE ROAD 0.3 MILE. LOCATION FLAG IS 264 FEET NORTH.



WTC, INC.
405 S.W. 1st Street
Andrews, TX 79714
(432) 523-2181



Exhibit A

Access

2.2" = 1 mile

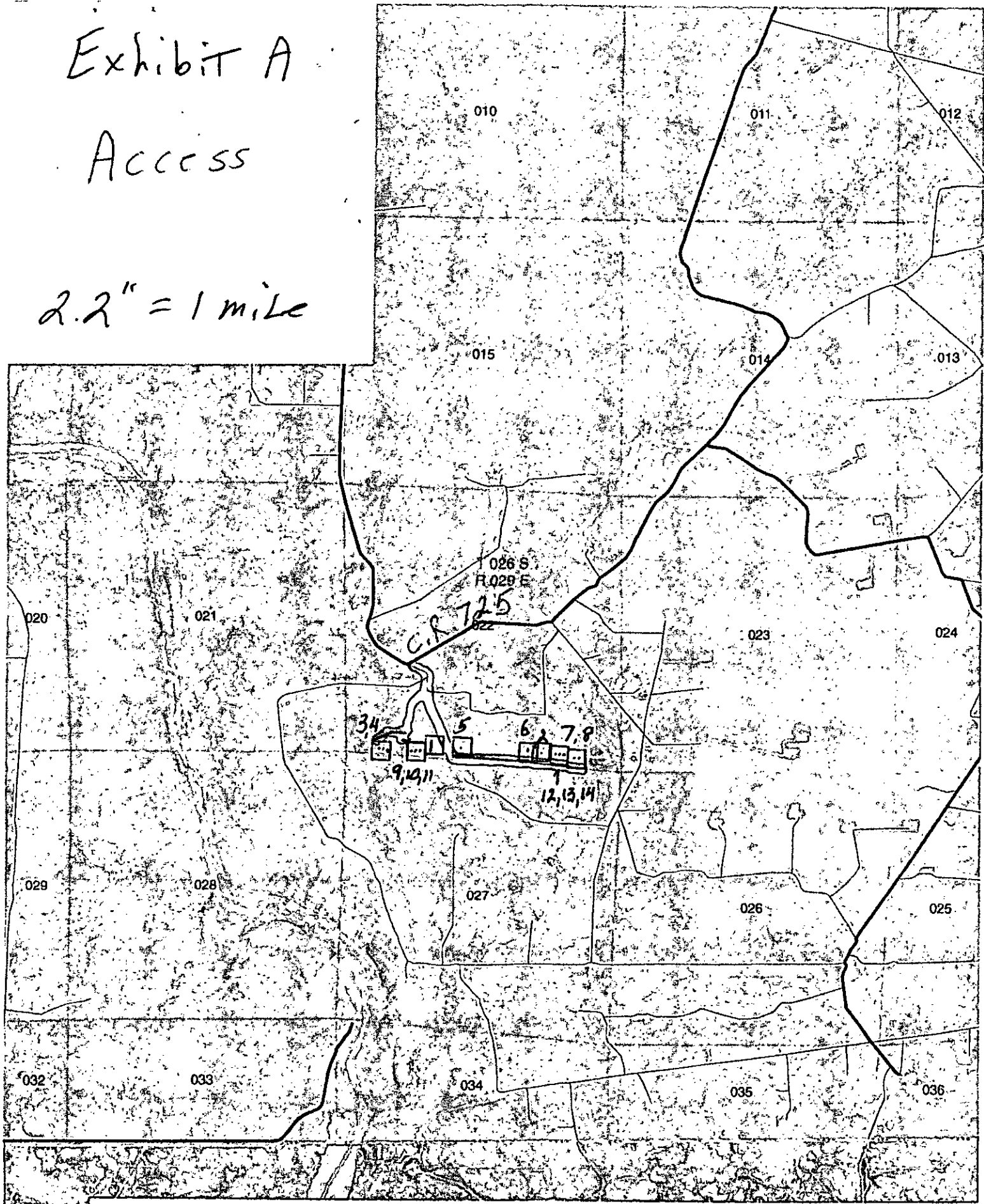
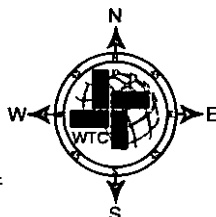


Exhibit B



WELL NAME: EAST PECOS FEDERAL COM 22-13H SHL

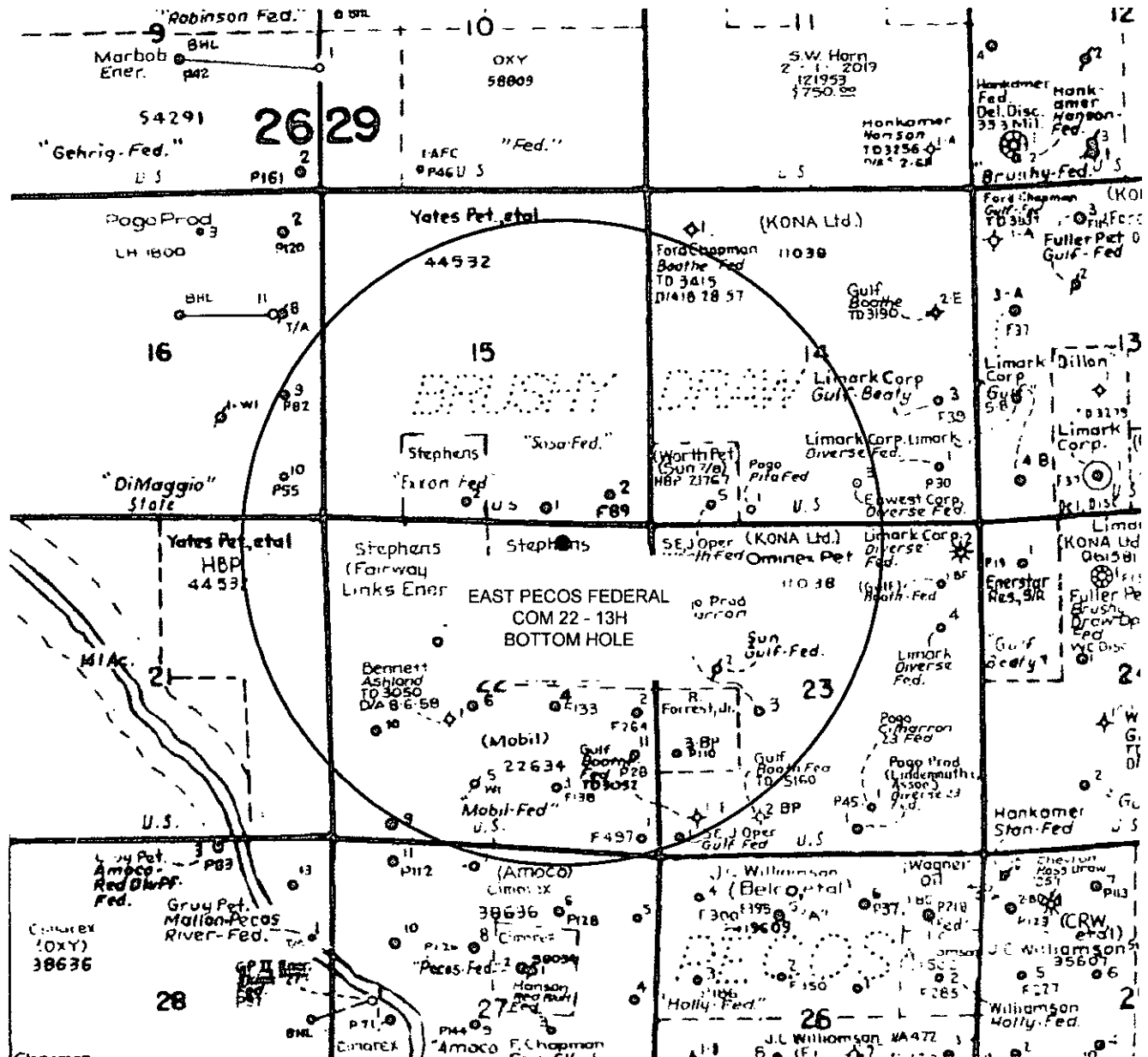


FROM THE INTERSECTION OF STATE HIGHWAY 285
AND LONGHORN COUNTY ROAD 725. GO EAST/
NORTHEAST ON LONGHORN COUNTY ROAD 725
FOR 6.7 MILES TO A "Y", STAY RIGHT. GO 0.3 MILE IN
SOUTHEASTERLY DIRECTION TO A LEASE ROAD
LEFT. GO EAST ON LEASE ROAD 0.3 MILE.
LOCATION FLAG IS 264 FEET NORTH.



RKI
Exploration
& Production

BOTTOM HOLE LOCATION



0 .5 1 1.5

GRAPHIC SCALE 1" = 1/2 MILE

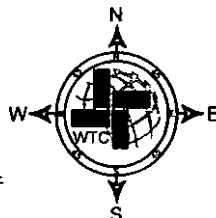
SECTION 22, T 26S, R 29E, N.M.P.M.

COUNTY: EDDY STATE: NM

DESCRIPTION: 230' FSL & 1452' FEL

OPERATOR: RKI EXPLORATION & PRODUCTION

WELL NAME: EAST PECOS FEDERAL COM 22-13H BHL



DRIVING DIRECTIONS:

FROM THE INTERSECTION OF STATE HIGHWAY 285 AND LONGHORN COUNTY ROAD 725. GO EAST/ NORTHEAST ON LONGHORN COUNTY ROAD 725 FOR 6.7 MILES TO A "Y", STAY RIGHT. GO 0.3 MILE IN SOUTHEASTERLY DIRECTION TO A LEASE ROAD LEFT. GO EAST ON LEASE ROAD 0.3 MILE. LOCATION FLAG IS 264 FEET NORTH.

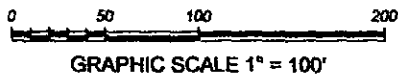
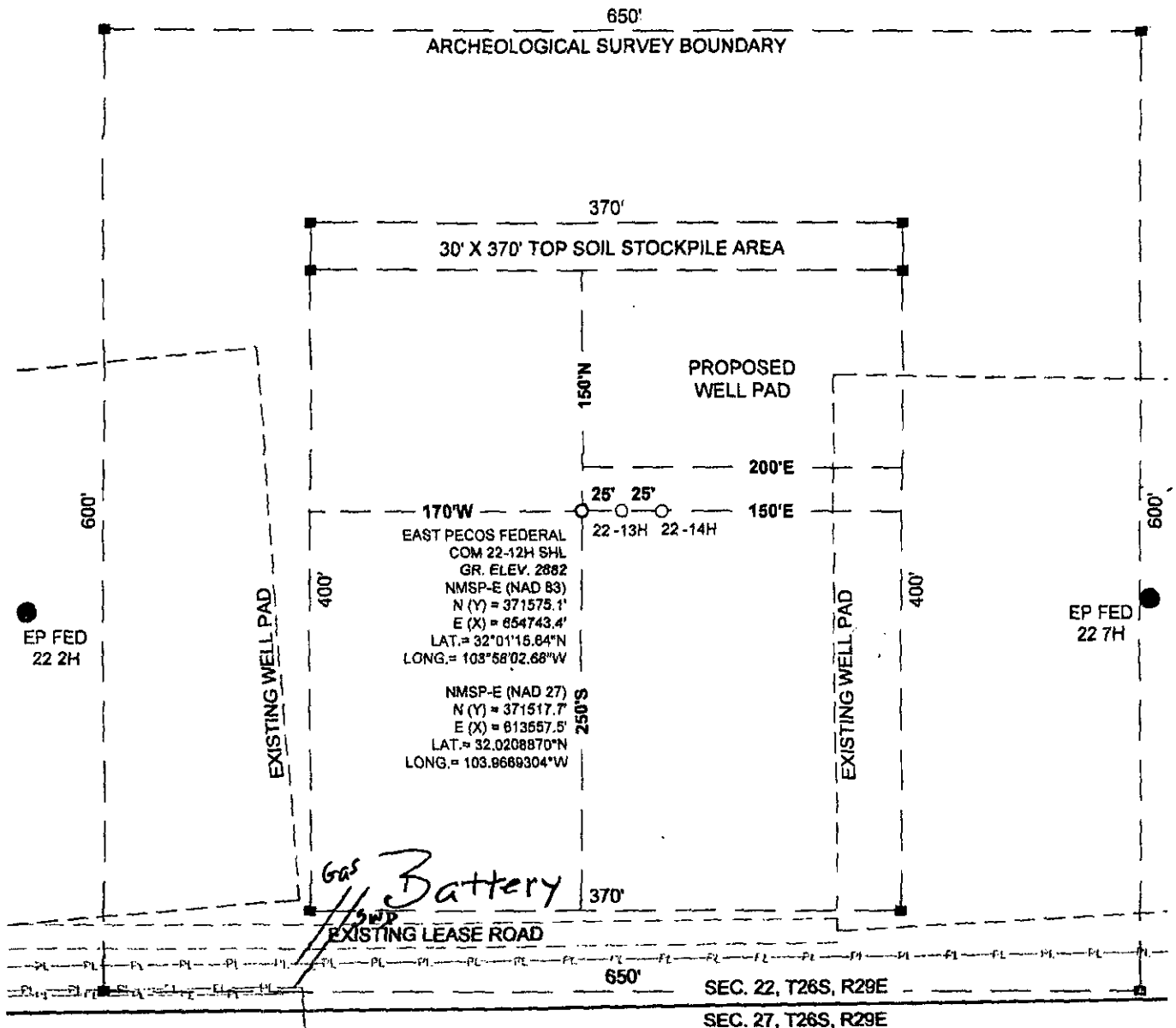


WTC, INC.
405 S.W. 1st Street
Andrews, TX 79714
(432) 523-2181

RKI
Exploration
& Production

Exhibit E

SITE LOCATION



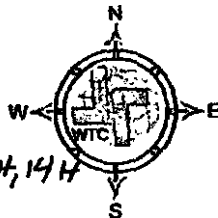
SECTION 22, T 26S, R 29E, N.M.P.M.

COUNTY: EDDY STATE: NM

DESCRIPTION: 310' FSL & 1335' FEL

OPERATOR: RKI EXPLORATION & PRODUCTION

WELL NAME: EAST PECOS FEDERAL COM 22-12H, 13H, 14H



Gas Line: 60'
SWD Line: 80'

DRIVING DIRECTIONS:

FROM THE INTERSECTION OF STATE HIGHWAY 285 AND LONGHORN COUNTY ROAD 725. GO EAST/ NORTHEAST ON LONGHORN COUNTY ROAD 725 FOR 6.7 MILES TO A "Y". STAY RIGHT. GO 0.3 MILE IN SOUTHEASTERLY DIRECTION TO A LEASE ROAD LEFT. GO EAST ON LEASE ROAD 0.3 MILE. LOCATION FLAG IS 264 FEET NORTH.



WTC, INC.
405 S.W. 1st Street
Andover, TX 79714
(432) 523-2181



RKI Exploration & Production, LLC
Drilling Program

Well East Pecos Federal Com 22-13H
Location Surface: 310 FSL 1,310 FEL Sec 22-26S-29E
Bottom Hole: 230 FNL 1,452 FEL Sec 22-26S-29E
County Eddy
State New Mexico

- 1) The elevation of the unprepared ground is 2,882 feet above sea level.
- 2) The geologic name of the surface formation is Quaternary - Alluvium.
- 3) A rotary rig will be utilized to drill the well to 14,561 feet and run casing.
This equipment will then be rigged down and the well will be completed with a workover rig.
- 4) Proposed depth is 14,561 feet measured depth.

5) Estimated tops:

	MD	TVD	Fluid	
Rustler	800	800	Freshwater	
Salado	1,100	1,100		
Base Lamar Lime	2,856	2,856		
Delaware Top	3,001	3,000	Oil	BHP
Cherry Canyon Sand	3,929	3,928	Oil	1,728 psi
Kingrea	5,630	5,628	Oil	2,476 psi
Bone Spring Lime	6,640	6,638	Oil	2,921 psi
Bone Spring 1st SS	7,545	7,543	Oil	3,319 psi
Bone Spring 2nd SS	8,356	8,354	Oil	3,676 psi
Bone Spring 3rd SS	9,402	9,400	Oil	4,136 psi
KOP	9,398	9,396	Oil	4,134 psi
Wolfcamp	9,767	9,740	Oil/Gas	4,286 psi
Wolfcamp Target Top	10,398	10,040	Oil/Gas	4,418 psi
Landing Point	10,398	10,040		4,418 psi
Total Depth	14,561	10,040	Gas	230 Degrees F
Lateral Length	4,163	MD		

Water anticipated at 180 ft.

*Note: All mineral resources encountered will be protected by running casing and raising cement across all encountered resources.

6) Pressure control equipment:

See COA

The blowout preventer equipment will be 5,000 psi rated as shown in the attached BOP diagram and consist of the following:

Annular preventer

Pipe rams

Blind rams

Pipe rams

Drilling spool or blowout preventer with 2 side outlets (choke side shall be a 3" minimum diameter, kill side shall be at least 2" diameter)

Choke line shall be 3" minimum diameter

2 choke line valves, 3" minimum diameter

2 chokes with 1 remotely controlled from the rig floor

Kill line, 2" minimum diameter

2 kill line valves and a check valve, 2" minimum diameter

Upper and lower kelly cock valves with handles readily available

Safety valves and subs to fit all drill string connections in use shall be readily available

Inside BOP or float available

Pressure gauge on choke manifold

All BOPE subjected to pressure shall be flanged, welded, or clamped

Fill-up line above uppermost preventer

See COA

The blowout preventer equipment (BOP) shown in Exhibit #1 will consist of a double ram type (5,000 psi WP) preventer, a bag-type annular preventer (5,000 psi WP), and a rotating head. Both units will be hydraulically operated and the ram type preventer will be equipped with blind rams on top and pipe rams (sized to accommodate the drill pipe size being utilized) on bottom. A 13 3/8" SOW x 13 5/8" 5M multi-bowl casing head will be installed and utilized until Total Depth is reached. The 9 5/8" casing will be landed in the head on a casing mandrel, and the stack will not be broken until total depth has been reached. Before drilling out the 9 5/8" casing will be tested to .22 psi/ft of casing setting depth or 1,500 psi whichever is greater, but not exceeding 70% of the burst rating of the pipe. After drilling approximately 10 feet of new formation an EMW test of 11.0 ppg will be performed. Pipe rams will be operated and checked each 24 hour period and each time the drill string is out of the hole. These function tests will be documented on the daily driller's log.

7) Casing program:

See COA

Hole Size	Top	Bottom	OD Csg	Weight	Grade	Connection	Burst	Pressure Max	Burst SF
17 1/2"	0	1,000 350'	13 3/8"	54.5	J-55	STC	2730	468	5.83
12 1/4"	0	6,640 6680'	9 5/8"	40	HCL-80	LTC	5750	3453	1.67
8 3/4"	0	14,561	5 1/2"	20	P-110	BTC	12630	10000	1.26

*Burst SF = Burst / Pmax

Hole Size	Top	Bottom	OD Csg	Weight	Grade	Connection	Collapse	Mud Weight	Collapse SF
17 1/2"	0	1,000	13 3/8"	54.5	J-55	STC	1580	9.0	3.38
12 1/4"	0	6,640	9 5/8"	40	HCL-80	LTC	4230	10.0	1.23
8 3/4"	0	14,561	5 1/2"	20	P-110	BTC	12100	11.5	1.39

*Collapse SF = [Collapse/(mw x 0.052 x Depth)]

Hole Size	Top	Bottom	OD Csg	Weight	Grade	Connection	Tension	Tension Load	Tension SF
17 1/2"	0	1,000	13 3/8"	54.5	J-55	STC	420000	54500	7.71
12 1/4"	0	6,640	9 5/8"	40	HCL-80	LTC	936000	265600	3.52
8 3/4"	0	14,561	5 1/2"	20	P-110	BTC	641000	291220	2.20

*All casing load assumptions are based on Air Wt. Burst design assumes Max Frac Pressure (10K), & Collapse design assumes evacuated & max Mud Weight during interval.

Minimum Design Standards

Collapse	1.1
Burst	1
Tension	1.9

All casing will be new

Casing design subject to revision based on geologic conditions encountered

8) Cement program:

Surface	17 1/2" hole			
Pipe OD	13 3/8"	350		
Setting Depth	1,000 ft			
Annular Volume	0.6947 cf/ft			
Tail	200			
Shoe Joint	36.5			
Excess	1		100 %	
			383 ft	
Lead	642 sx	1.75 cf/sk	13.5 ppg	9.13 gal/sk
Tail	200 sx	1.33 cf/sk	14.8 ppg	6.32 gal/sk
Lead:	"C" + 4% PF20 (gel) + 2% PF1 (CC) + .125 pps PF29 (CelloFlake) + .4 pps PF46 (antifoam)			
Tail:	"C" + 1% PF1 (CC)			
	Top of cement:	Surface		
	3 centralizers on bottom 3 jts 1 per jt, then 1 every other jt			

Intermediate	12 1/4" hole			
Pipe OD	9 5/8"			
Setting Depth	6,640 ft	6680		
Annular Volume	0.3132 cf/ft	0.323 cf/ft		
DV Tool	5,500 ft			
Excess	1st Stage 0.6		60 %	
	2nd Stage 1.6		160 %	

Stage 1:				
Lead	386 sx	1.48 cf/sk	13 ppg	7.609 gal/sk
Lead:	PVL + 1.3% PF44 + 5% PF174 + .5% PF606 + .4% PF13 + .1% PF153 + .4 pps PF45			
Top of cement:	5,500 ft		DV tool:	5,500 ft
1 per joint bottom 3 joints, then 1 every 3th jt				

Stage 2:				
Lead	1308 sx	2.87 cf/sk	11.6 ppg	16.793 gal/sk
Tail	175 sx	1.33 cf/sk	14.8 ppg	6.331 gal/sk
Lead:	35/65 Poz "C" + 5% PF44 + 6% PF20 + .2% PF13 + .125 ps PF29 + .4 pps PF46			
Tail:	"C" + .2% PF13			
	Top of cement: SURFACE			
	1 per joint bottom 3 joints, then 1 every 3th jt			

Production	8 3/4" hole			
Pipe OD (in OH)	5 1/2"			
Setting Depth	14,561 ft			
Annular Volume	0.2526 cf/ft	0.2526 cf/ft		
Excess	0.35		35 %	

Lead	660 sx	1.47 cf/sk	13 ppg	7.573 gal/sk
Tail	932 sx	1.89 cf/sk	13 ppg	9.632 gal/sk
Lead:	PVL + 1.3% PF44 + 5% PF174 + .5% PF606 + .3% PF 813 + .1% PF153 + .4pps PF45			
Tail:	AcidSolid PVL + 5% PF174 + .7% PF606 + .2% PF153 + .5% PF13 + 30% PF151 + .4 pps PF47			
Top of cement:	5,340 ft 6380 See COA			
1 per joint bottom 3 joints, then every 3rd joint to top of cement				

*NOTE: A cement bond log will be ran across 9 5/8" Intermediate casing

9) Mud program:

Top	Bottom	Mud Wt.	Vis	PV	YP	Fluid Loss	Type System
0	1,000	8.3 to 8.5	28 to 30	1 - 6	1 - 6	NC	Fresh Water ND
350	6,640	9.8 to 10	28 to 30	1 - 10	1 - 12	NC	Brine
6680	9,398	8.8 to 9.3	35 to 40	8 - 10	10 - 12	NC	Cut Brine
	14,561	9.3 to 10.5	45 to 55	8 - 12	6 - 10	10 to 15	Cut Brine

*Enough Barite will be stored on location to weight up mud system to an 11.5 ppg mud weight if needed (2751 sx from 9.3 ppg to 11.5 ppg - 2000 bbl system).

Formula: Barite Required (lbs) = $\frac{(35.05 \times (Wf - Wi))}{(35.05 - Wi)} \times \text{Mud Volume (gals)}$

*Pason PVT equipment will monitor all pit levels at all times, in the event an influx occurred.

10) Logging, coring, and testing program:

See COA

No drill stem test or cores are planned
KOP to intermediate: CNL, Caliper, GR, DLL
Intermediate to surface: CNL, GR

11) Potential hazards:

See COA
yes

No abnormal pressure or temperature is expected. ~~No~~ H₂S is known to exist in the area, although some form of H₂S detection equipment will be utilized. If H₂S is encountered the operator will comply with the provisions of Onshore Order No. 6. Lost circulation is not anticipated, but lost circulation material and weighting materials will be on location and readily available.

12) Anticipated start date

ASAP

Duration

35 days

RKI Exploration & Production, LLC
Completion Procedure

Well East Pecos Federal Com 22-13H
Location Surface: 310 FSL 1,310 FEL Sec. 22-26S-29E
Bottom Hole: 230 FNL 1,452 FEL Sec. 22-26S-29E

County Eddy
State New Mexico

Hole Size	Top	Bottom	OD Csg	Wt/Grade	Connection	Collapse Design Factor	Burst Design Factor	Tension Design Factor
17 1/2"	0	1000 350	13 3/8"	54.5	J-55	3.38	5.83	7.71
12 1/4"	0	6640 2620	9 5/8"	40	HCL-80	1.23	1.67	3.52
8 3/4"	0	14561	5 1/2"	20	P-110	1.39	1.26	2.20

TD 14,561 ft MD 10,040 ft TVD

- 1) MIRU work over rig and NU BOP. Run CBL/GR log to confirm TOC
- 2) Fracture stimulate in 10 to 15 stages:

2500 gal	15% HCL
25000 gal	Linear 25# gel
30000 gal	Linear 25# gel
20000 gal	Lightning 20
20000 gal	Lightning 20
30000 gal	Lightning 20
20000 gal	Lightning 20
20000 gal	Lightning 20
25000 gal	Lightning 20
30000 gal	Lightning 20
15000 gal	Lightning 20
Flush	Treated water
237500 gal total	
250000 lb total	

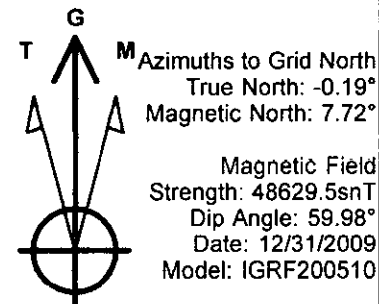
Repeat for remaining stages

- 3) Flow back and test
- 4) TIH and drill out frac plugs or sleeves
- 5) Run production equipment and place well on production
- 6) Stimulation Fluid: See attached chemical sheet

Surface treating pressure 6500 psi
Max injection pressure 8500 psi
Anticipated frac height 75 ft
Anticipated frac length 500 ft
Disposal
Disposal

WELL DETAILS: East Pecos Fed 22-13H

Northing 371573.20 Easting 654768.40 Ground Level: 2882.0
 Latitude 32° 1' 15.624 N Longitude 103° 58' 2.391 W



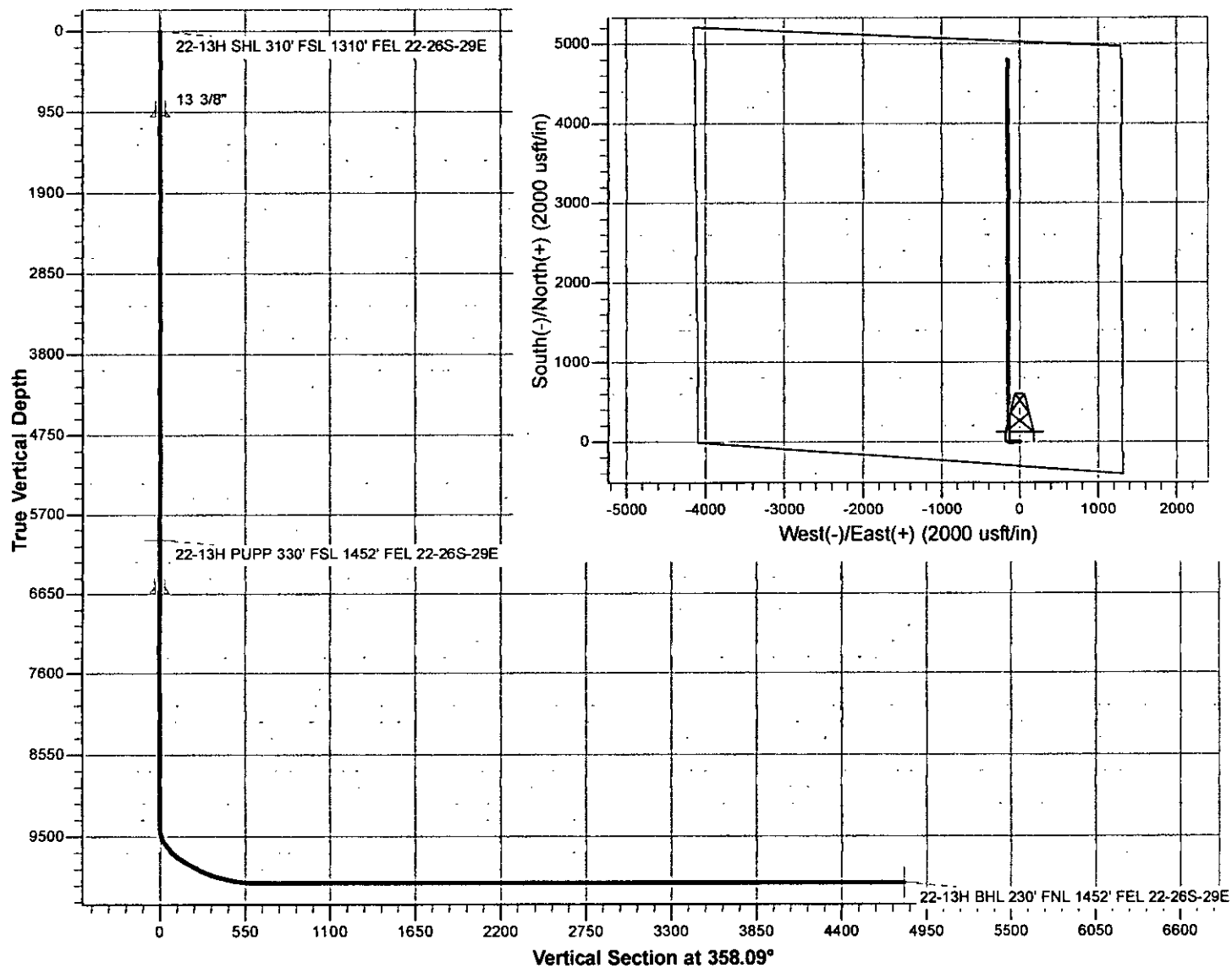
22-13H SHL 310' FSL 1310' FEL 22-26S-29E
 22-13H PUPP 330' FSL 1452' FEL 22-26S-29E
 22-13H BHL 230' FNL 1452' FEL 22-26S-29E

SECTION DETAILS

MD	Inc	Azi	TVD	+N/-S	+E/-W	Dleg	Vsect
0.0	0.00	0.00	0.0	0.0	0.0	0.00	0.0
1000.0	0.00	0.00	1000.0	0.0	0.0	0.00	0.0
1055.1	1.65	267.11	1055.0	0.0	-0.8	3.00	0.0
5947.0	1.65	267.11	5945.0	-7.2	-141.6	0.00	-2.4
6002.0	0.00	0.00	6000.0	-7.2	-142.4	3.00	-2.5
9398.4	0.00	0.00	9396.3	-7.2	-142.4	0.00	-2.5
9848.4	45.00	359.79	9801.5	160.6	-143.0	10.00	165.3
9948.4	45.00	359.79	9872.2	231.3	-143.3	0.00	236.0
10398.4	90.00	359.79	10040.0	636.5	-144.8	10.00	640.9
14561.0	90.00	359.79	10040.0	4799.1	-160.0	0.00	4801.8

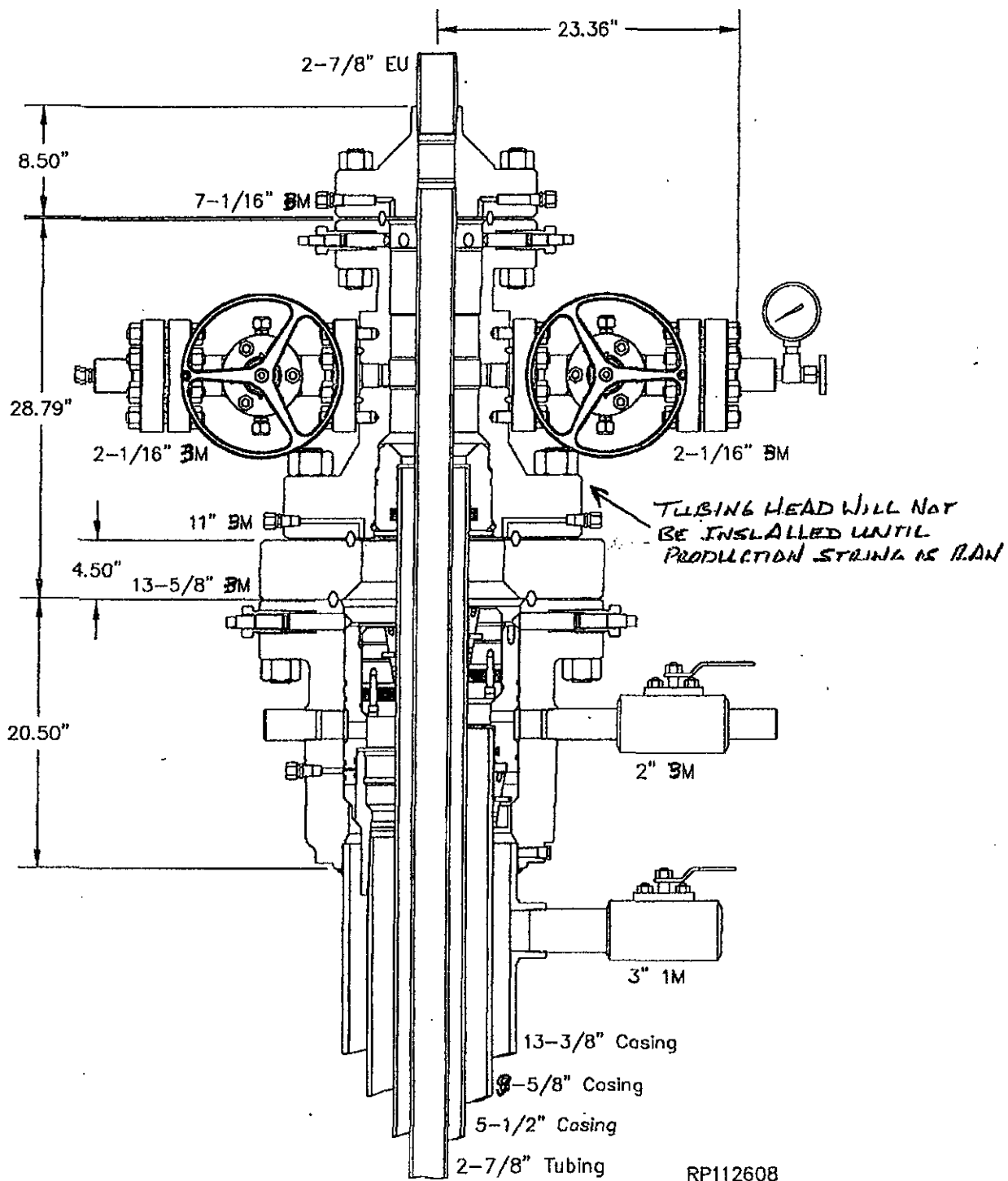
FORMATION TOP DETAILS

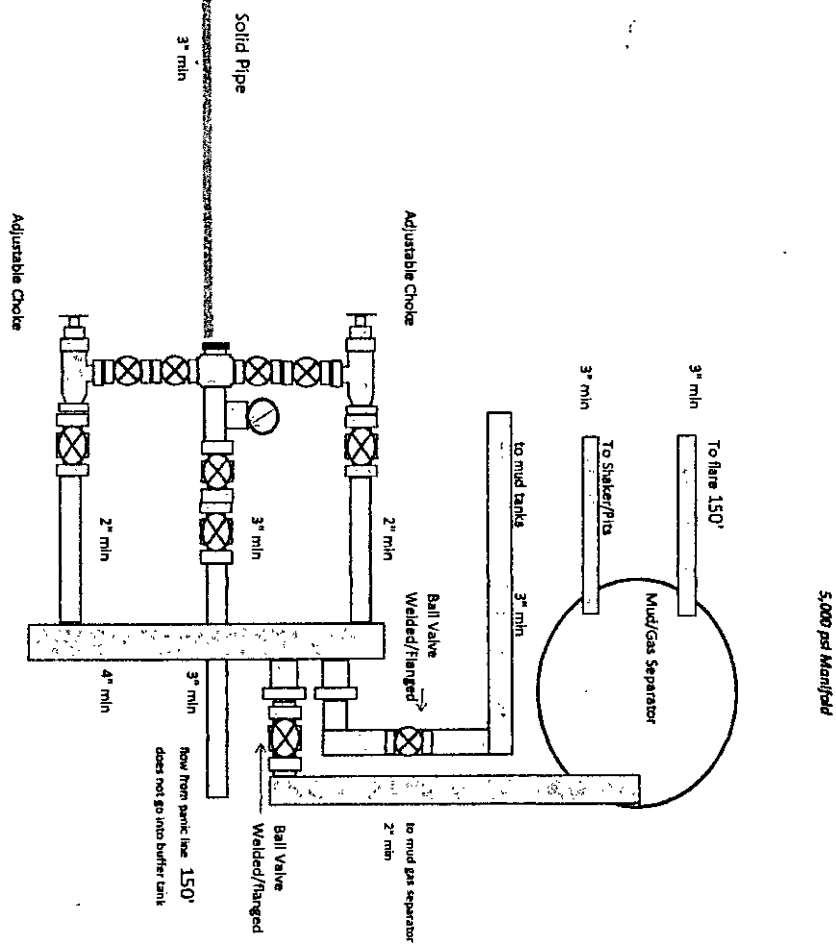
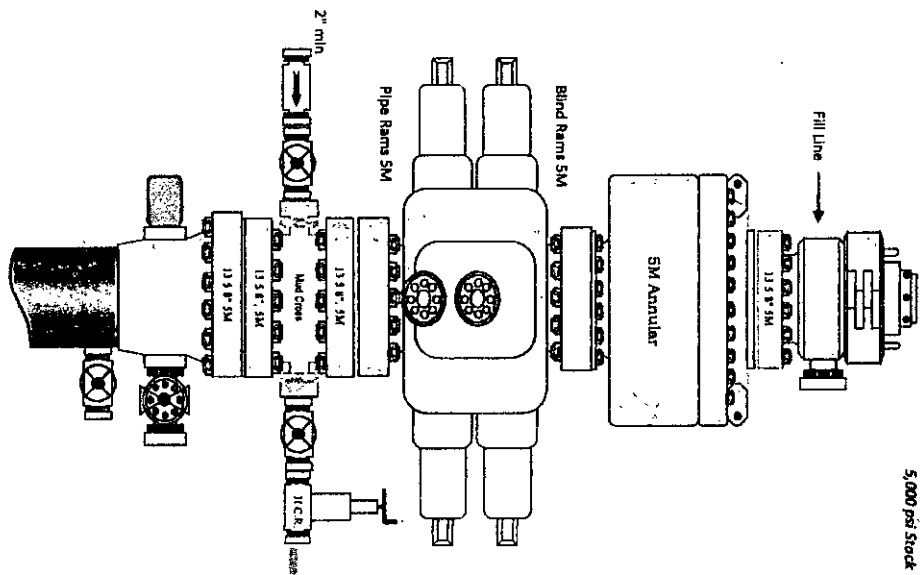
TVD	MD	Formation
2856.0	2856.8	Base Lamar
3000.0	3000.8	Delaware
3928.0	3929.2	Cherry Canyon
5628.0	5629.9	Kingrea
6638.0	6640.0	BS Lime
7543.0	7545.0	BS 1 SS
8354.0	8356.0	BS 2 SS
9400.0	9402.0	BS 3 SS
9740.0	9766.9	Wolfcamp
10040.0	10398.4	Wolfcamp TT



System Drawing

GE Oil & Gas multi-bowl
wellhead





RKI Exploration and Production
3817 N. W. Expressway, Suite 950
Oklahoma City, OK. 73112

Closed Loop System

Design Plan

Equipment List

- 2 – 414 Swaco Centrifuges
- 2 – 4 screen Mongoose shale shakers
- 2 – 250 bbl. tanks to hold fluid
- 2 – CRI Bins with track system
- 2 – 500 bbl. frac tanks for fresh water
- 2 – 500 bbl. frac tanks for brine water

Operation and Maintenance

- Closed Loop equipment will be inspected daily by each tour and any necessary maintenance performed
- Any leak in system will be repaired and/or contained immediately
- OCD notified within 48 hours
- Remediation process started

Closure Plan

During drilling operations, all liquids, drilling fluids and cuttings will be hauled off via CRI (Controlled Recovery Incorporated). Permit #: R-9166.

Plat for Closed Loop System

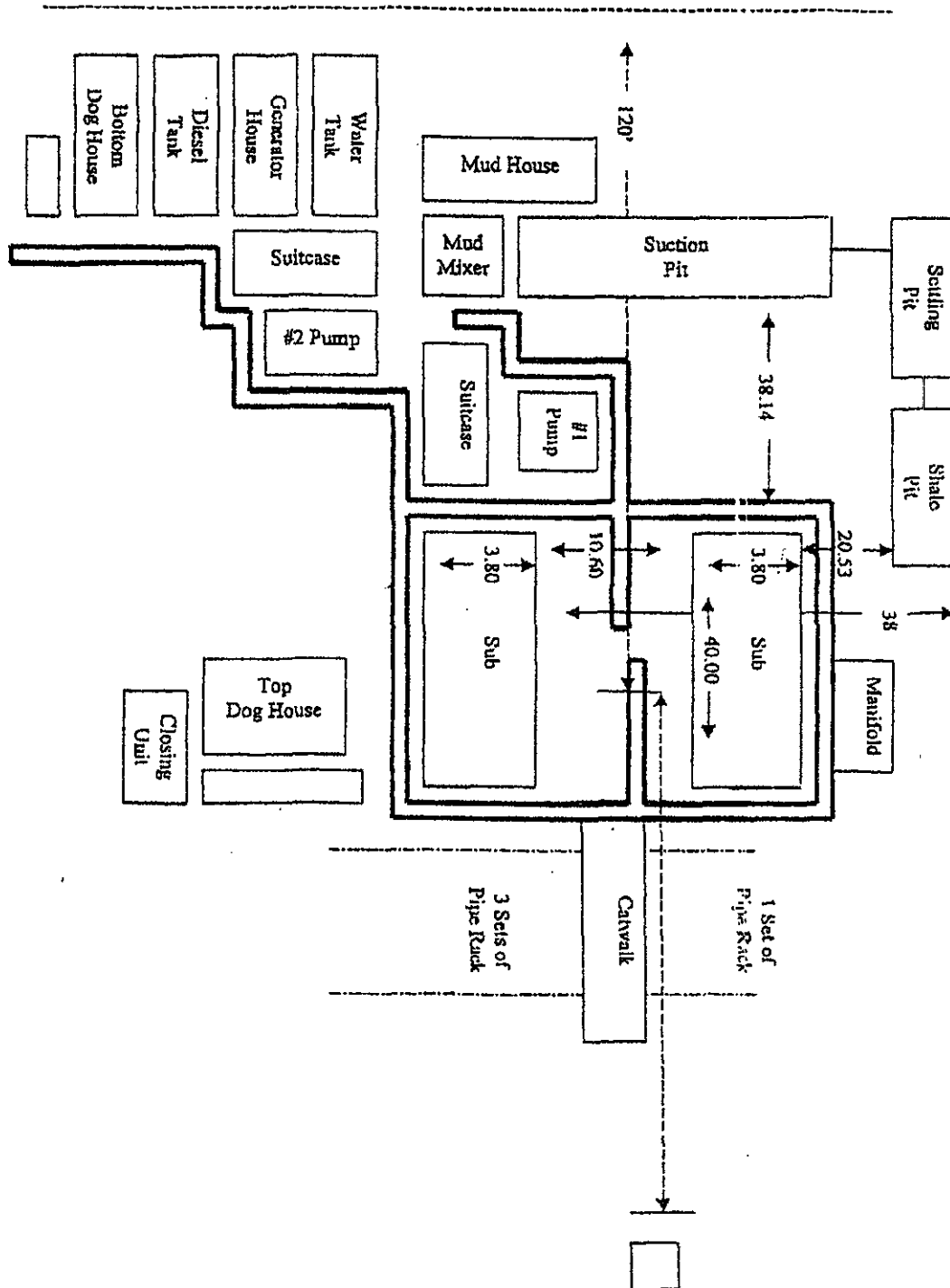


EXHIBIT D

Rig Plat Only
EAST PECOS FEDERAL COM 22-12H, 22-13H & 22-14H
V-DOOR EAST

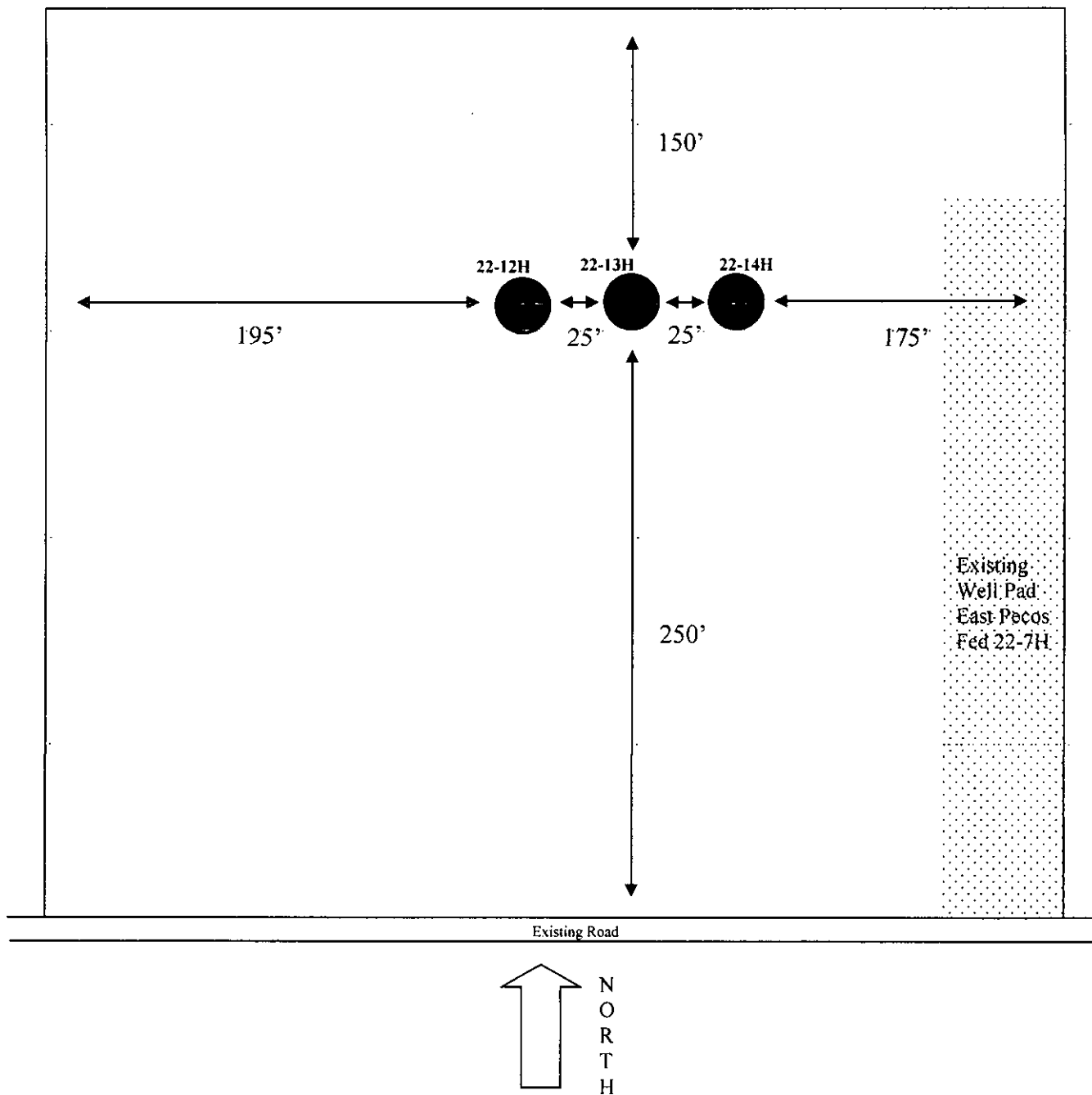
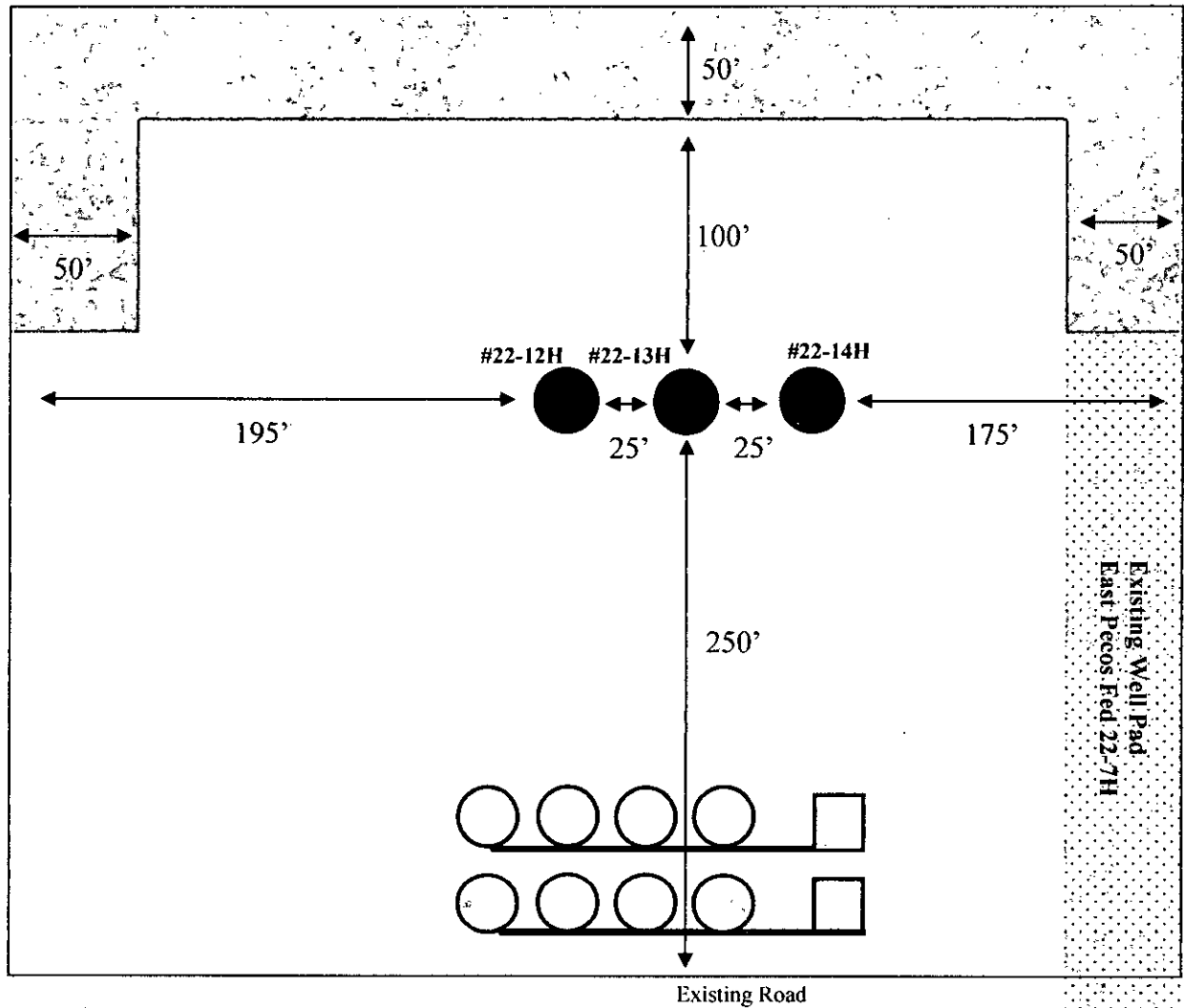
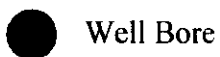


EXHIBIT C

Interim Reclamation & Production Facilities EAST PECOS FEDERAL COM 22-12H, 22-13H & 22-14H V-DOOR EAST



LEGEND



Well Bore



Topsoil



Interim
Reclamation



Production Facilities



Berm



NORTH

SURFACE USE PLAN

**RKI Exploration & Production, LLC
East Pecos Federal Com 22-13H
Surface Hole: 310 FSL & 1310 FEL
Bottom Hole: 230 FNL & 1452 FEL
Section 22, T. 26 S., R. 29 E
Eddy County, New Mexico**

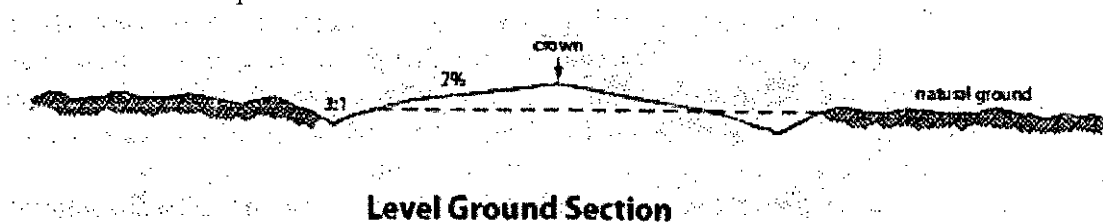
This plan is submitted with form 3160-3, Application for Permit to Drill, covering the above described well. The purpose of this plan is to describe the location of the proposed well, the proposed construction activities and operations plan, the magnitude of the surface disturbance involved and the procedures to be followed in rehabilitating the surface after completion of the operations, so that a complete appraisal can be made of the environmental effect associated with the operations.

1. EXISTING ROADS:

- A. DIRECTIONS: Go south of Carlsbad, NM, on Highway 285, for 30 miles. Turn east onto the Longhorn road (County Road 725) for 7.8 miles. Turn south on lease road for 0.3 mile. Turn east on lease road for 0.3 mile. The proposed access will begin at this point. All existing roads are either paved or a caliche lease road.
- B. See attached plats and maps provided by WTC Surveys.
- C. The access routes from Eddy County Road 725 to the well location is depicted on **Exhibit A**. The route highlighted in red is all on lease and on private surface and does not require a ROW permit.
- D. Existing roads on the access route will be improved and maintained to the standard set forth in Section 2 of this Surface Use Plan of Operations.

2. NEW OR RECONSTRUCTED ACCESS ROADS:

- A. The well location will be adjacent to the existing east/west lease road and entrance on new pad will be off southeast corner on the existing 7H well pad.
- B. The maximum width of the driving surface will be 14 feet. The road will be crowned and ditched with a 2% slope from the tip of the crown to the edge of the driving surface. The ditches will be 1 foot deep with 3:1 slopes. The driving surface will be made of 6" rolled and compacted caliche.



- C. Surface material will be native caliche. The average grade of the entire road will be approximately 3%.
- D. Fence Cuts: No
- E. Cattle guards: No
- F. Turnouts: No

G. Culverts: No

H. Cuts and Fills: Not significant

I. Approximately 6 inches of topsoil (root zone) will be stripped from the proposed access road prior to any further construction activity. The topsoil that was stripped will be spread along the edge of the road and within the ditch. The topsoil will be seeded with the proper seed mix designated by the BLM.

J. The access road will be constructed and maintained as necessary to prevent soil erosion and accommodate all-weather traffic. The road will be crowned and ditched with water turnouts installed as necessary to provide for proper drainage along the access road route.

K. The access road and associated drainage structures will be constructed and maintained in accordance with road guidelines contained in the joint BLM/USFS publication: Surface Operating Standards for Oil and Gas Exploration and Development, The Gold Book, Fourth Edition and/or BLM Manual Section 9113 concerning road construction standards on projects subject to federal jurisdiction.

3. LOCATION OF EXISTING WELLS:

See attached map (**Exhibit B**) showing all wells within a one-mile radius.

4. LOCATION OF EXISTING AND/OR PROPOSED FACILITIES:

A. In the event the well is found productive, a battery facility will be constructed on the south side of this pad. (**SEE EXHIBIT C**). There will also be a buried, 6" steel, gas pipeline (250 psi), that will run from southwest corner of pad, southwest to the existing gas pipeline, just south of the east/west lease road. There will also be a surface installed, 4" poly, flowline (90psi) that will follow the gas line to the same valve line system. The gas and water line length will be 60 ft. for gas and 80 ft. for SWD (**SEE EXHIBIT E**).

B. All permanent (on site six months or longer) aboveground structures constructed or installed on location and not subject to safety requirements will be painted to BLM specifications.

C. Containment berms will be constructed completely around production facilities designed to hold fluids. The containment berms will be constructed or compacted subsoil, be sufficiently impervious, hold 1 ½ times the capacity of the largest tank and away from cut or fill areas.

5. LOCATION AND TYPE OF WATER SUPPLY:

The well will be drilled using a combination of water mud systems as outlined in the Drilling Program. The water will be obtained from commercial water stations in the area and hauled to the location by transport truck using the existing and proposed roads shown in the attached survey plats. If a commercial water well is nearby, a temporary, surface poly line, will be laid along existing roads or other ROW easements and the water pumped to the well. No water well will be drilled on the location.

6. SOURCE OF CONSTRUCTION MATERIALS:

Any construction material that may be required for surfacing of the drill pad and access road will be from a contractor having a permitted source of materials within the general area. No construction materials will be removed from Federal lands without prior approval from the appropriate surface management agency. All roads will be constructed of 6" rolled and compacted caliche.

7. METHODS OF HANDLING WASTE DISPOSAL:

- A. The well will be drilled utilizing a closed loop mud system. Drill cuttings will be held in roll-off style mud boxes and taken to an NMOCD approved disposal site.
- B. Drilling fluids will be contained in steel mud pits.
- C. Water produced from the well during completion will be held temporarily in steel tanks and then taken to an NMOCD approved commercial disposal facility.
- D. Oil produced during operations will be stored in tanks until sold.
- E. Portable, self-contained chemical toilets will be provided for human waste disposal. Upon completion of operations, or as required, the toilet holding tanks will be pumped and the contents thereof disposed of in an approved sewage disposal facility. All state and local laws and regulations pertaining to disposal of human and solid waste will be complied with. This equipment will be properly maintained during the drilling and completion operations and will be removed when all operations are complete.
- F. All trash, junk, and other waste materials will be contained in trash cages or bins to prevent scattering and will be removed and deposited in an approved sanitary landfill. Immediately after drilling all debris and other waste materials on and around the well location, not contained in the trash cage will be cleaned up and removed from the location. No potentially adverse materials or substances will be left on the location.

8. ANCILLARY FACILITIES:

No campsite, airstrip, or other facilities will be built as a result of the operation of this well. No staging areas are needed.

9. WELL SITE LAYOUT:

- A. **Exhibit D** shows the dimensions of the proposed well pad.
- B. The proposed 3 well pad location, at 25 ft. apart, will be 370' x 400' (**See Exhibit D**). There will be no reserve pit due to the well being drilled utilizing a closed loop mud system. The closed loop system will meet the NMOCD requirements 19.15.17.
- C. The WTC Surveyor's plat, Form C-102 and **Exhibit D**, shows how the well will be turned to a V-Door East.
- D. A 600' x 600' area has been staked and flagged.
- E. All equipment and vehicles will be confined to the approved disturbed areas of this APD (i.e., access road, well pad, and topsoil storage areas)

10. PLANS FOR SURFACE RECLAMATION:

- A. After concluding the drilling and/or completion operations, if the well is found non-commercial, all the equipment will be removed, the surface material, caliche, will be removed from the well pad and road and transported to the original caliche pit or used for other roads. The original stock piled top soil will be returned to the pad and contoured, as close as possible, to the original topography. The access road will have the caliche removed and the road ripped, barricaded and seeded as directed by the BLM.
- B. If the well is a producer, the portions of the location not essential to production facilities or space required for workover operations, will be reclaimed and seeded as per BLM requirements.
(SEE EXHIBIT C FOR INTERIM RECLAMATION PLAT FOR THIS WELL)
- C. Reclamation Performance Standards
The following reclamation performance standards will be met:

Interim Reclamation – Includes disturbed areas that may be redisturbed during operations and will be redisturbed at final reclamation to achieve restoration of the original landform and a natural vegetative community.

- Disturbed areas not needed for active, long-term production operations or vehicle travel will be recontoured, protected from erosion, and revegetated with a self-sustaining, vigorous, diverse, native (or as otherwise approved) plant community sufficient to minimize visual impacts, provide forage, stabilize soils, and impede the invasion of noxious, invasive, and non-native weeds.

Final Reclamation – Includes disturbed areas where the original landform and a natural vegetative community will be restored and it is anticipated the site will not be redisturbed for future development.

- The original landform will be restored for all disturbed areas including well pads, production facilities, roads, pipelines, and utility corridors.
- A self-sustaining, vigorous, diverse, native (or otherwise approved) plant community will be established on the site, with a density sufficient to control erosion and invasion by non-native plants and to re-establish wildlife habitat or forage production. At a minimum, the established plant community will consist of species included in the seed mix and/or desirable species occurring in the surrounding natural vegetation.
- Erosion features are equal to or less than surrounding area and erosion control is sufficient so that water naturally infiltrates into the soil and gulying, headcutting, slumping, and deep or excessive rills (greater than 3 inches) are not observed.
- The site will be free of State- or county-listed noxious weeds, oil field debris and equipment, and contaminated soil. Invasive and non-native weeds are controlled.

D. Reclamation Actions

Earthwork for interim and final reclamation will be completed within 6 months of well completion or plugging unless a delay is approved in writing by the BLM authorized officer.

The following minimum reclamation actions will be taken to ensure that the reclamation objectives and standards are met. It may be necessary to take additional reclamation actions beyond the minimum in order to achieve the Reclamation Standards.

Reclamation – General

Notification:

- The BLM will be notified at least 3 days prior to commencement of any reclamation operations.

Housekeeping:

- Within 30 days of well completion, the well location and surrounding areas(s) will be cleared of, and maintained free of, all debris, materials, trash, and equipment not required for production.
- No hazardous substances, trash, or litter will be buried or placed in pits.

Topsoil Management:

- Operations will disturb the minimum amount of surface area necessary to conduct safe and efficient operations.
- Topsoil depth is defined as the top layer of soil that contains 80% of the roots. In areas to be heavily disturbed, the topsoil will be stripped and stockpiled around the perimeter of the well location and along the perimeter of the access road to control run-on and run-off, to keep topsoil viable, and to make redistribution of topsoil more efficient during interim reclamation. Stockpiled topsoil will include vegetative material. Topsoil will be clearly segregated and stored separately from subsoils.
- Salvaging and spreading topsoil will not be performed when the ground or topsoil is frozen or too wet to adequately support construction equipment or so dry that dust clouds greater than 30 feet tall are created. If such equipment creates ruts in excess of four (4) inches deep, the soil will be deemed too wet.
- No major depressions will be left that would trap water and cause ponding unless the intended purpose is to trap runoff and sediment.

Seeding:

- Seedbed Preparation. Initial seedbed preparation will consist of recontouring to the appropriate interim or final reclamation standard. All compacted areas to be seeded will be ripped to a minimum depth of 18 inches with a minimum furrow spacing of 2 feet, followed by recontouring the surface and then evenly spreading the stockpiled topsoil. Prior to seeding, the seedbed will be scarified to a depth of no less than 4 – 6 inches. If the site is to be broadcast seeded, the surface will be left rough enough to trap seed and snow, control erosion, and increase water infiltration.
- If broadcast seeding is to be used and is delayed, final seedbed preparation will consist of contour cultivating to a depth of 4 to 6 inches within 24 hours prior to seeding, dozer tracking, or other imprinting in order to break the soil crust and create seed germination micro-sites.
- Seed Application. Seeding will be conducted no more than two weeks following completion of final seedbed preparation. A certified weed-free seed mix designed by the BLM to meet reclamation standards will be used.
- If the site is harrowed or dragged, seed will be covered by no more than 0.25 inch of soil.

11. SURFACE OWNERSHIP:

- A. The surface is owned by George Ross Ranch, LLC. 3710 Rawlins Street, Suite 850, Dallas, Texas 75219. The ranch manager is Worth Ross. The surface is multiple use with the primary uses of the region for the grazing of livestock and the production of oil and gas.

12. OTHER INFORMATION:

- A. The area surrounding the well site is in a very flat, shallow gravelly loam, within a rolling hills type area. The vegetation consists of Mesquite, Creosote, White-Thorn Acacia with three-awns and some dropseed species.
- B. There is no permanent or live water in the immediate area.
- C. There are no dwellings within 2 miles of this location.
- D. RKI is a participant with the Permian Basin MOA and a check for \$1552 is attached with this application.

13. BOND COVERAGE:

Bond Coverage is Nationwide; Bond Number NMB-000460.

OPERATORS REPRESENTATIVE:

The RKI Exploration and Production, LLC representatives responsible for ensuring compliance of the surface use plan are listed below:

Surface:

Barry W. Hunt – Permitting Agent
1403 Springs Farm Place
Carlsbad, NM 88220
(575) 885-1417 (Home)
(575) 361-4078 (Cell)

Drilling & Production:

Ken Fairchild – RKI Exploration and Production, LLC.
210 Park Avenue, Suite 900
Oklahoma City, Ok. 73102
(405) 996-5764 (Office)
(469) 693-6051 (Cell)

ON-SITE PERFORMED ON 8/13/14 RESULTED IN PROPOSED LOCATION BEING MOVED 160 FT. NORTH, DUE TO EXISTING GAS & SWD PIPELINES AND SQUEEZED BETWEEN THE #2H & 7H LOCATIONS. IT WAS AGREED TO TURN THE LOCATION TO A V-DOOR EAST, RESTRICT PAD TO 170 FT. DUE TO BATTERY ON #7H LOCATION. THE BATTERY WILL BE PLACED ON THE SOUTH SIDE OF PAD AND TOP SOIL TO THE NORTH. INTERIM RECLAMATION WOULD BE THE NORTH PORTION OF PAD. ACCESS WILL BE OFF SOUTHEAST CORNER OF PAD ON THE EXISTING #7H WELL PAD AND ACCESS.

PRESENT AT ON-SITE:

**BARRY HUNT – PERMIT AGENT FOR RKI EXPLORATION & PRODUCTION
INDRA DAHAL – BLM
WTC SURVEYORS**

PECOS DISTRICT CONDITIONS OF APPROVAL

OPERATOR'S NAME:	RKI Explor & Prod
LEASE NO.:	NM21767
WELL NAME & NO.:	13H-East Pecos Federal Com 22
SURFACE HOLE FOOTAGE:	310'/S & 1310'/E
BOTTOM HOLE FOOTAGE:	230'/N & 1452'/E
LOCATION:	Section 22, T. 26 S., R. 29 E., NMPM
COUNTY:	Eddy County, New Mexico

TABLE OF CONTENTS

Standard Conditions of Approval (COA) apply to this APD. If any deviations to these standards exist or special COAs are required, the section with the deviation or requirement will be checked below.

- ☐ **General Provisions**
- ☐ **Permit Expiration**
- ☐ **Archaeology, Paleontology, and Historical Sites**
- ☐ **Noxious Weeds**
- ☒ **Special Requirements**
 - Cave/Karst
 - Communitization Agreement
- ☐ **Construction**
 - Notification
 - Topsoil
 - Closed Loop System
 - Federal Mineral Material Pits
 - Well Pads
 - Roads
- ☐ **Road Section Diagram**
- ☒ **Drilling**
 - Cement Requirements
 - Drilling Mud Requirements
 - H2S Requirements
 - Logging Requirements
 - Pressure Control Requirements
 - Waste Material and Fluids
- ☒ **Production (Post Drilling)**
 - Well Structures & Facilities
 - Pipelines
- ☐ **Interim Reclamation**
- ☐ **Final Abandonment & Reclamation**

I. GENERAL PROVISIONS

The approval of the Application For Permit To Drill (APD) is in compliance with all applicable laws and regulations: 43 Code of Federal Regulations 3160, the lease terms, Onshore Oil and Gas Orders, Notices To Lessees, New Mexico Oil Conservation Division (NMOCD) Rules, National Historical Preservation Act As Amended, and instructions and orders of the Authorized Officer. Any request for a variance shall be submitted to the Authorized Officer on Form 3160-5, Sundry Notices and Report on Wells.

II. PERMIT EXPIRATION

If the permit terminates prior to drilling and drilling cannot be commenced within 60 days after expiration, an operator is required to submit Form 3160-5, Sundry Notices and Reports on Wells, requesting surface reclamation requirements for any surface disturbance. However, if the operator will be able to initiate drilling within 60 days after the expiration of the permit, the operator must have set the conductor pipe in order to allow for an extension of 60 days beyond the expiration date of the APD. (Filing of a Sundry Notice is required for this 60 day extension.)

III. ARCHAEOLOGICAL, PALEONTOLOGY & HISTORICAL SITES

Any cultural and/or paleontological resource discovered by the operator or by any person working on the operator's behalf shall immediately report such findings to the Authorized Officer. The operator is fully accountable for the actions of their contractors and subcontractors. The operator shall suspend all operations in the immediate area of such discovery until written authorization to proceed is issued by the Authorized Officer. An evaluation of the discovery shall be made by the Authorized Officer to determine the appropriate actions that shall be required to prevent the loss of significant cultural or scientific values of the discovery. The operator shall be held responsible for the cost of the proper mitigation measures that the Authorized Officer assesses after consultation with the operator on the evaluation and decisions of the discovery. Any unauthorized collection or disturbance of cultural or paleontological resources may result in a shutdown order by the Authorized Officer.

IV. NOXIOUS WEEDS

The operator shall be held responsible if noxious weeds become established within the areas of operations. Weed control shall be required on the disturbed land where noxious weeds exist, which includes the roads, pads, associated pipeline corridor, and adjacent land affected by the establishment of weeds due to this action. The operator shall consult with the Authorized Officer for acceptable weed control methods, which include following EPA and BLM requirements and policies.

V. SPECIAL REQUIREMENT(S)

Cave and Karst:

****** Depending on location, additional Drilling, Casing, and Cementing procedures may be required by engineering to protect critical karst groundwater recharge areas.

Cave/Karst Surface Mitigation:

The following stipulations will be applied to minimize impacts during construction, drilling and production.

Construction:

In the advent that any underground voids are opened up during construction activities, construction activities will be halted and the BLM will be notified immediately.

No Blasting:

No blasting will be utilized for pad construction. The pad will be constructed and leveled by adding the necessary fill and caliche.

Pad Berming:

The entire perimeter of the well pad will be bermed to prevent oil, salt, and other chemical contaminants from leaving the well pad.

- The compacted berm shall be constructed at a minimum of 12 inches high with impermeable mineral material (e.g. caliche).
- No water flow from the uphill side(s) of the pad shall be allowed to enter the well pad.
- The topsoil stockpile shall be located outside the bermed well pad.
- Topsoil, either from the well pad or surrounding area, shall not be used to construct the berm.
- No storm drains, tubing or openings shall be placed in the berm.
- If fluid collects within the bermed area, the fluid must be vacuumed into a safe container and disposed of properly at a state approved facility.
- The integrity of the berm shall be maintained around the surfaced pad throughout the life of the well and around the downsized pad after interim reclamation has been completed.
- Any access road entering the well pad shall be constructed so that the integrity of the berm height surrounding the well pad is not compromised. (Any access road crossing the berm cannot be lower than the berm height.)

Tank Battery Liners and Berms:

Tank battery locations and all facilities will be lined and bermed. A 20 mil permanent liner will be installed with a 4 oz. felt backing to prevent tears or punctures. Tank battery berms must be large enough to contain 1 ½ times the content of the largest tank.

Leak Detection System:

A method of detecting leaks is required. The method could incorporate gauges to measure loss, situate valves and lines so they can be visually inspected, or installing electronic sensors to alarm when a leak is present. Leak detection plan will be submitted to BLM for approval.

Automatic Shut-off Systems:

Automatic shut off, check valves, or similar systems will be installed for pipelines and tanks to minimize the effects of catastrophic line failures used in production or drilling.

Cave/Karst Subsurface Mitigation:

The following stipulations will be applied to protect cave/karst and ground water concerns:

Rotary Drilling with Fresh Water:

Fresh water will be used as a circulating medium in zones where caves or karst features are expected. SEE ALSO: Drilling COAs for this well.

Directional Drilling:

Kick off for directional drilling will occur at least 100 feet below the bottom of the cave occurrence zone. SEE ALSO: Drilling COAs for this well.

Lost Circulation:

ALL lost circulation zones from the surface to the base of the cave occurrence zone will be logged and reported in the drilling report.

Regardless of the type of drilling machinery used, if a void of four feet or more and circulation losses greater than 70 percent occur simultaneously while drilling in any cave-bearing zone, the BLM will be notified immediately by the operator. The BLM will assess the situation and work with the operator on corrective actions to resolve the problem.

Abandonment Cementing:

Upon well abandonment in high cave karst areas additional plugging conditions of approval may be required. The BLM will assess the situation and work with the operator to ensure proper plugging of the wellbore.

Pressure Testing:

Annual pressure monitoring will be performed by the operator on all casing annuli and reported in a sundry notice. If the test results indicated a casing failure has occurred, remedial action will be undertaken to correct the problem to the BLM's approval.

Communitization Agreement:

1. The operator will submit a Communitization Agreement to the Carlsbad Field Office, 620 E Greene St. Carlsbad, New Mexico 88220, at least 90 days before the anticipated date of first production from a well subject to a spacing order issued by the New Mexico Oil Conservation Division. The Communitization Agreement will include the signatures of all working interest owners in all Federal and Indian leases subject to the Communitization Agreement (i.e., operating rights owners and lessees of record), or certification that the operator has obtained the written signatures of all such owners and will make those signatures available to the BLM immediately upon request.
2. If the operator does not comply with this condition of approval, the BLM may take enforcement actions that include, but are not limited to, those specified in 43 CFR 3163.1.
3. In addition, the well sign shall include the surface and bottom hole lease numbers. When the Communitization Agreement number is known, it shall also be on the sign.

VI. CONSTRUCTION

A. NOTIFICATION

The BLM shall administer compliance and monitor construction of the access road and well pad. Notify the Carlsbad Field Office at (575) 234-5909 at least 3 working days prior to commencing construction of the access road and/or well pad.

When construction operations are being conducted on this well, the operator shall have the approved APD and Conditions of Approval (COA) on the well site and they shall be made available upon request by the Authorized Officer.

B. TOPSOIL

The operator shall strip the top portion of the soil (root zone) from the entire well pad area and stockpile the topsoil along the edge of the well pad as depicted in the APD. The root zone is typically six (6) inches in depth. All the stockpiled topsoil will be *redistributed over the interim reclamation areas. Topsoil shall not be used for berming the pad or facilities.* For final reclamation, the topsoil shall be spread over the entire pad area for seeding preparation.

Other subsoil (below six inches) stockpiles must be completely segregated from the topsoil stockpile. Large rocks or subsoil clods (not evident in the surrounding terrain) must be buried within the approved area for interim and final reclamation.

C. CLOSED LOOP SYSTEM

Tanks are required for drilling operations: No Pits.

The operator shall properly dispose of drilling contents at an authorized disposal site.

D. FEDERAL MINERAL MATERIALS PIT

Payment shall be made to the BLM prior to removal of any federal mineral materials. Call the Carlsbad Field Office at (575) 234-5972.

E. WELL PAD SURFACING

Surfacing of the well pad is not required.

If the operator elects to surface the well pad, the surfacing material may be required to be removed at the time of reclamation. The well pad shall be constructed in a manner which creates the smallest possible surface disturbance, consistent with safety and operational needs.

F. EXCLOSURE FENCING (CELLARS & PITS)

Exclosure Fencing

The operator will install and maintain exclosure fencing for all open well cellars to prevent access to public, livestock, and large forms of wildlife before and after drilling operations until the pit is free of fluids and the operator initiates backfilling. (For examples of exclosure fencing design, refer to BLM's Oil and Gas Gold Book, Exclosure Fence Illustrations, Figure 1, Page 18.)

G. ON LEASE ACCESS ROADS**Road Width**

The access road shall have a driving surface that creates the smallest possible surface disturbance and does not exceed fourteen (14) feet in width. The maximum width of surface disturbance, when constructing the access road, shall not exceed twenty-five (25) feet.

Surfacing

Surfacing material is not required on the new access road driving surface. If the operator elects to surface the new access road or pad, the surfacing material may be required to be removed at the time of reclamation.

Where possible, no improvements should be made on the unsurfaced access road other than to remove vegetation as necessary, road irregularities, safety issues, or to fill low areas that may sustain standing water.

The Authorized Officer reserves the right to require surfacing of any portion of the access road at any time deemed necessary. Surfacing may be required in the event the road deteriorates, erodes, road traffic increases, or it is determined to be beneficial for future field development. The surfacing depth and type of material will be determined at the time of notification.

Crowning

Crowning shall be done on the access road driving surface. The road crown shall have a grade of approximately 2% (i.e., a 1" crown on a 14' wide road). The road shall conform to Figure 1; cross section and plans for typical road construction.

Ditching

Ditching shall be required on both sides of the road.

Turnouts

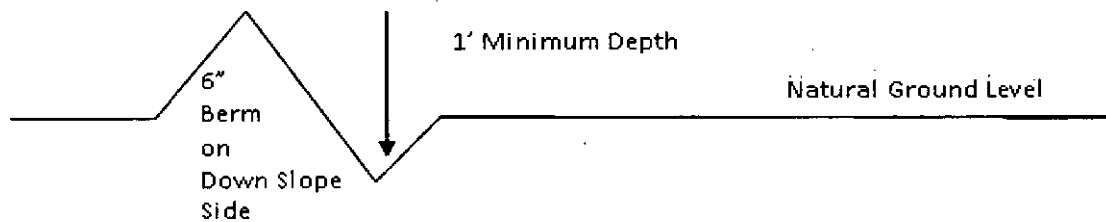
Vehicle turnouts shall be constructed on the road. Turnouts shall be intervisible with interval spacing distance less than 1000 feet. Turnouts shall conform to Figure 1; cross section and plans for typical road construction.

Drainage

Drainage control systems shall be constructed on the entire length of road (e.g. ditches, sidehill out sloping and insloping, lead-off ditches, culvert installation, and low water crossings).

A typical lead-off ditch has a minimum depth of 1 foot below and a berm of 6 inches above natural ground level. The berm shall be on the down-slope side of the lead-off ditch.

Cross Section of a Typical Lead-off Ditch



All lead-off ditches shall be graded to drain water with a 1 percent minimum to 3 percent maximum ditch slope. The spacing interval are variable for lead-off ditches and shall be determined according to the formula for spacing intervals of lead-off ditches, but may be amended depending upon existing soil types and centerline road slope (in %);

Formula for Spacing Interval of Lead-off Ditches

Example - On a 4% road slope that is 400 feet long, the water flow shall drain water into a lead-off ditch. Spacing interval shall be determined by the following formula:

$$400 \text{ foot road with } 4\% \text{ road slope: } \frac{400'}{4\%} + 100' = 200' \text{ lead-off ditch interval}$$

Cattleguards

An appropriately sized cattleguard sufficient to carry out the project shall be installed and maintained at fence/road crossings. Any existing cattleguards on the access road route shall be repaired or replaced if they are damaged or have deteriorated beyond practical use. The operator shall be responsible for the condition of the existing cattleguards that are in place and are utilized during lease operations.

Fence Requirement

Where entry is granted across a fence line, the fence shall be braced and tied off on both sides of the passageway prior to cutting. The operator shall notify the private surface landowner or the grazing allotment holder prior to crossing any fences.

Public Access

Public access on this road shall not be restricted by the operator without specific written approval granted by the Authorized Officer.

Construction Steps

1. Salvage topsoil
2. Construct road

3. Redistribute topsoil
4. Revegetate slopes

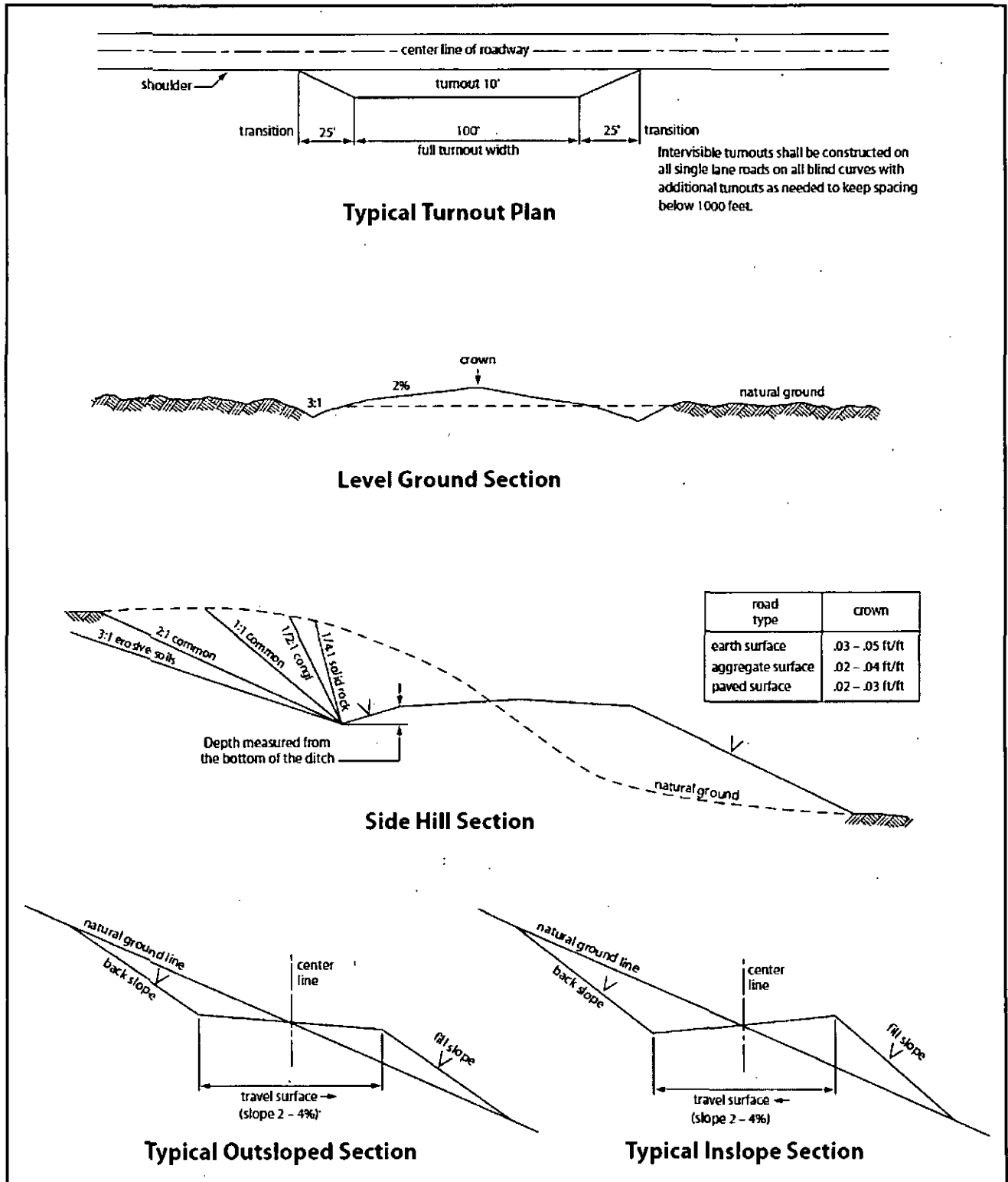


Figure 1. Cross-sections and plans for typical road sections representative of BLM resource or FS local and higher-class roads.

VII. DRILLING

A. DRILLING OPERATIONS REQUIREMENTS

The BLM is to be notified in advance for a representative to witness:

- a. Spudding well (minimum of 24 hours)
- b. Setting and/or Cementing of all casing strings (minimum of 4 hours)
- c. BOPE tests (minimum of 4 hours)

☒ **Eddy County**

Call the Carlsbad Field Office, 620 East Greene St., Carlsbad, NM 88220,
(575) 361-2822

1. A Hydrogen Sulfide (H₂S) Drilling Plan shall be activated 500 feet prior to drilling into the Delaware group. **As a result, the Hydrogen Sulfide area must meet Onshore Order 6 requirements, which includes equipment and personnel/public protection items. If Hydrogen Sulfide is encountered, please provide measured values and formations to the BLM.**
2. Unless the production casing has been run and cemented or the well has been properly plugged, the drilling rig shall not be removed from over the hole without prior approval. **If the drilling rig is removed without approval – an Incident of Non-Compliance will be written and will be a “Major” violation.**
3. Floor controls are required for 3M or Greater systems. These controls will be on the rig floor, unobstructed, readily accessible to the driller and will be operational at all times during drilling and/or completion activities. Rig floor is defined as the area immediately around the rotary table; the area immediately above the substructure on which the draw works is located, this does not include the dog house or stairway area.
4. **The record of the drilling rate along with the GR/N well log run from TD to surface (horizontal well – vertical portion of hole) shall be submitted to the BLM office as well as all other logs run on the borehole 30 days from completion. If available, a digital copy of the logs is to be submitted in addition to the paper copies. The Rustler top and top and bottom of Salt are to be recorded on the Completion Report.**

B. CASING

Changes to the approved APD casing program need prior approval if the items substituted are of lesser grade or different casing size or are Non-API. The Operator can exchange the components of the proposal with that of superior strength (i.e. changing from J-55 to N-80, or from 36# to 40#). Changes to the approved cement program need prior approval if the altered cement plan has less volume or strength or if the changes are substantial (i.e. Multistage tool, ECP, etc.).

The initial wellhead installed on the well will remain on the well with spools used as needed.

Centralizers required on surface casing per Onshore Order 2.III.B.1.f.

Wait on cement (WOC) for Water Basin:

After cementing but before commencing any tests, the casing string shall stand cemented under pressure until both of the following conditions have been met: 1) cement reaches a minimum compressive strength of 500 psi at the shoe, 2) until cement has been in place at least 8 hours. WOC time will be recorded in the driller's log. See individual casing strings for details regarding lead cement slurry requirements. **DURING THIS WOC TIME, NO DRILL PIPE, ETC. SHALL BE RUN IN THE HOLE.**

Provide compressive strengths including hours to reach required 500 pounds compressive strength prior to cementing each casing string. Have well specific cement details onsite prior to pumping the cement for each casing string.

No pea gravel permitted for remedial or fall back remedial without prior authorization from the BLM engineer.

Risks:

Medium Cave/Karst

Possible water flows in the Castile and in the Salado.

Possible lost circulation in the Rustler and in the Delaware.

Possible Abnormal Pressure encountered when penetrating the Third Bone Spring Sandstone and all subsequent formations.

1. The 13 3/8 inch surface casing shall be set at approximately 350 feet (**above the salt, and if salt is encountered, set casing at least 25 feet above the salt**) and cemented to the surface.
 - a. If cement does not circulate to the surface, the appropriate BLM office shall be notified and a temperature survey utilizing an electronic type temperature survey with surface log readout will be used or a cement bond log shall be run to verify the top of the cement. Temperature survey will be run a minimum of six hours after pumping cement and ideally between 8-10 hours after completing the cement job.
 - b. **Wait on cement (WOC) time for a primary cement job is to include the lead cement slurry.**
 - c. Wait on cement (WOC) time for a remedial job will be a minimum of 4 hours after bringing cement to surface or 500 pounds compressive strength, whichever is greater.
 - d. If cement falls back, remedial cementing will be done prior to drilling out that string.

Formation below the 13 3/8 inch shoe to be tested according to Onshore Order 2.III.B.1.i. Test to be done as a mud equivalency test using the mud weight necessary for the pore pressure of the formation below the shoe and the mud weight for the bottom of the hole. Report results to BLM office.

2. The minimum required fill of cement behind the 9 5/8 inch intermediate casing which shall be set at approximately 6680 feet (**in the Bone Spring Limestone, instead in the Base of the Brushy Canyon**) is:

Operator has proposed DV tool at depth of 5500 feet. Operator is to submit sundry if DV tool depth varies by more than 100 feet from approved depth.

- a. First stage to DV tool:
 - ☒ Cement to circulate. If cement does not circulate, contact the appropriate BLM office before proceeding with second stage cement job. Operator should have plans as to how they will achieve circulation on the next stage.
- b. Second stage above DV tool:
 - ☒ Cement to surface. If cement does not circulate see B.1.a, c-d above.

If cement does not circulate to surface on the intermediate casing, the cement on the production casing must come to surface.

Formation below the 9 5/8 inch shoe to be tested according to Onshore Order 2.III.B.1.i. Test to be done as a mud equivalency test using the mud weight necessary for the pore pressure of the formation below the shoe (not the mud weight required to prevent dissolving the salt formation) and the mud weight for the bottom of the hole. Report results to BLM office.

Centralizers required on horizontal leg, must be type for horizontal service and a minimum of one every other joint.

3. The minimum required fill of cement behind the 5 1/2 inch production casing is:

☒ Cement should tie-back at least 300 feet into previous casing string. Operator shall provide method of verification.

4. If hardband drill pipe is rotated inside casing, returns will be monitored for metal. If metal is found in samples, drill pipe will be pulled and rubber protectors which have a larger diameter than the tool joints of the drill pipe will be installed prior to continuing drilling operations.

C. PRESSURE CONTROL

1. All blowout preventer (BOP) and related equipment (BOPE) shall comply with well control requirements as described in Onshore Oil and Gas Order No. 2 and API RP 53 Sec. 17.

2. Operator has proposed a multi-bowl wellhead assembly that has a weld on head with no o-ring seals. This assembly will only be tested when installed on the surface casing. Minimum working pressure of the blowout preventer (BOP) and related equipment (BOPE) required for drilling below the surface casing shoe shall be 5000 (5M) psi.

- a. Wellhead manufacturer is supplying the test plug/retrieval tool for the operator's third party tester to use during the BOP/BOPE test. Operator shall use the supplied test plug/retrieval tool.
- b. Operator shall install the wear bushing required by the wellhead manufacturer. This wear bushing shall be installed by using the test plug/retrieval tool.
- c. Wellhead manufacturer representative shall be on location when the intermediate casing mandrel is landed. Operator shall submit copy of manufacturer's wellsite report with subsequent report.
- d. Operator shall perform the intermediate casing integrity test to 70% of the casing burst. This will test the multi-bowl seals.
- e. If the cement does not circulate and one inch operations would have been possible with a standard wellhead, the well head shall be cut off, cementing operations performed and another wellhead installed.

5M system requires an HCR valve, remote kill line and annular to match. The remote kill line is to be installed prior to testing the system and tested to stack pressure.

3. The appropriate BLM office shall be notified a minimum of 4 hours in advance for a representative to witness the tests.
 - a. In a water basin, for all casing strings utilizing slips, these are to be set as soon as the crew and rig are ready and any fallback cement remediation has been done. The casing cut-off and BOP installation can be initiated four hours after installing the slips, which will be approximately six hours after bumping the plug. For those casing strings not using slips, the minimum wait time before cut-off is eight hours after bumping the plug. BOP/BOPE testing can begin after cut-off or once cement reaches 500 psi compressive strength (including lead when specified), whichever is greater. However, if the float does not hold, cut-off cannot be initiated until cement reaches 500 psi compressive strength (including lead when specified).
 - b. The tests shall be done by an independent service company utilizing a test plug **not a cup or J-packer**.
 - c. The test shall be run on a 5000 psi chart for a 2-3M BOP/BOP, on a 10000 psi chart for a 5M BOP/BOPE and on a 15000 psi chart for a 10M BOP/BOPE. If a linear chart is used, it shall be a one hour chart. A circular chart shall have a maximum 2 hour clock. If a twelve hour or twenty-four hour chart is used, tester shall make a notation that it is run with a two hour clock.
 - d. The results of the test shall be reported to the appropriate BLM office.
 - e. All tests are required to be recorded on a calibrated test chart. **A copy of the BOP/BOPE test chart and a copy of independent service company test will be submitted to the appropriate BLM office.**
 - f. The BOP/BOPE test shall include a low pressure test from 250 to 300 psi. The test will be held for a minimum of 10 minutes if test is done with a test plug and 30 minutes without a test plug. This test shall be performed prior to the test at full stack pressure.
 - g. BOP/BOPE must be tested by an independent service company within 500 feet of the top of the **Third Bone Spring** formation if the time between the setting of the intermediate casing and reaching this depth exceeds 20 days. This test does not exclude the test prior to drilling out the casing shoe as per Onshore Order No. 2.

D. DRILLING MUD

Mud system monitoring equipment, with derrick floor indicators and visual and audio alarms, shall be operating before drilling into the **Third Bone Spring** formation and the **Wolfcamp** formation, and shall be used until production casing is run and cemented.

Proposed mud weight may not be adequate for drilling through **Third Bone Spring** and **Wolfcamp**.

E. DRILL STEM TEST

If drill stem tests are performed, Onshore Order 2.III.D shall be followed.

F. WASTE MATERIAL AND FLUIDS

All waste (i.e. drilling fluids, trash, salts, chemicals, sewage, gray water, etc.) created as a result of drilling operations and completion operations shall be safely contained and disposed of properly at a waste disposal facility. No waste material or fluid shall be disposed of on the well location or surrounding area.

Porto-johns and trash containers will be on-location during fracturing operations or any other crew-intensive operations.

KGR 12122015

VIII. PRODUCTION (POST DRILLING)

A. WELL STRUCTURES & FACILITIES

Placement of Production Facilities

Production facilities should be placed on the well pad to allow for maximum interim recontouring and revegetation of the well location.

Exclosure Netting (Open-top Tanks)

Immediately following active drilling or completion operations, the operator will take actions necessary to prevent wildlife and livestock access, including avian wildlife, to all open-topped tanks that contain or have the potential to contain salinity sufficient to cause harm to wildlife or livestock, hydrocarbons, or Resource Conservation and Recovery Act of 1976-exempt hazardous substances. At a minimum, the operator will net, screen, or cover open-topped tanks to exclude wildlife and livestock and prevent mortality. If the operator uses netting, the operator will cover and secure the open portion of the tank to prevent wildlife entry. The operator will net, screen, or cover the tanks until the operator removes the tanks from the location or the tanks no longer contain substances that could be harmful to wildlife or livestock. Use a maximum netting mesh size of 1 ½ inches. The netting must not be in contact with fluids and must not have holes or gaps.

Chemical and Fuel Secondary Containment and Exclosure Screening

The operator will prevent all hazardous, poisonous, flammable, and toxic substances from coming into contact with soil and water. At a minimum, the operator will install and maintain an impervious secondary containment system for any tank or barrel containing hazardous, poisonous, flammable, or toxic substances sufficient to contain the contents of the tank or barrel and any drips, leaks, and anticipated precipitation. The operator will dispose of fluids within the containment system that do not meet applicable state or U. S. Environmental Protection Agency livestock water standards in accordance with state law; the operator must not drain the fluids to the soil or ground. The operator will design, construct, and maintain all secondary containment systems to prevent wildlife and livestock exposure to harmful substances. At a minimum, the operator will install effective wildlife and livestock exclosure systems such as fencing, netting, expanded metal mesh, lids, and grate covers. Use a maximum netting mesh size of 1 ½ inches.

Open-Vent Exhaust Stack Exclosures

The operator will construct, modify, equip, and maintain all open-vent exhaust stacks on production equipment to prevent birds and bats from entering, and to discourage perching, roosting, and nesting. (*Recommended exclosure structures on open-vent exhaust stacks are in the shape of a cone.*) Production equipment includes, but may not be limited to, tanks, heater-treaters, separators, dehydrators, flare stacks, in-line units, and compressor mufflers.

Containment Structures

Proposed production facilities such as storage tanks and other vessels will have a secondary containment structure that is constructed to hold the capacity of 1.5 times the

largest tank, plus freeboard to account for precipitation, unless more stringent protective requirements are deemed necessary.

Painting Requirement

All above-ground structures including meter housing that are not subject to safety requirements shall be painted a flat non-reflective paint color, **Shale Green** from the BLM Standard Environmental Color Chart (CC-001: June 2008).

B. PIPELINES

STANDARD STIPULATIONS FOR SURFACE INSTALLED PIPELINES

A copy of the Grant and attachments, including stipulations, survey plat(s) and/or map(s), shall be on location during construction. BLM personnel may request to review a copy of your permit during construction to ensure compliance with all stipulations.

Holder agrees to comply with the following stipulations to the satisfaction of the Authorized Officer:

1. Holder shall indemnify the United States against any liability for damage to life or property arising from the occupancy or use of public lands under this grant.
2. Holder shall comply with all applicable Federal laws and regulations existing or hereafter enacted or promulgated. In any event, Holder shall comply with the Toxic Substances Control Act of 1976 as amended, 15 USC § 2601 *et seq.* (1982) with regard to any toxic substances that are used, generated by or stored on the right-of-way or on facilities authorized under this right-of-way grant (*see* 40 CFR, Part 702-799 and in particular, provisions on polychlorinated biphenyls, 40 CFR 761.1-761.193). Additionally, any release of toxic substances (leaks, spills, etc.) in excess of the reportable quantity established by 40 CFR, Part 117 shall be reported as required by the Comprehensive Environmental Response, Compensation, and Liability Act, section 102b. A copy of any report required or requested by any Federal agency or State government as a result of a reportable release or spill of any toxic substances shall be furnished to the Authorized Officer concurrent with the filing of the reports to the involved Federal agency or State government.
3. Holder agrees to indemnify the United States against any liability arising from the release of any hazardous substance or hazardous waste (as these terms are defined in the Comprehensive Environmental Response, Compensation and Liability Act of 1980, 42 U.S.C. § 9601, *et seq.* or the Resource Conservation and Recovery Act, 42 U.S.C. 6901, *et seq.*) on the Right-of-Way (unless the release or threatened release is wholly unrelated to activity of the Right-of-Way Holder's activity on the Right-of-Way), or resulting from the activity of the Right-of-Way Holder on the Right-of-Way. This provision applies without regard to whether a release is caused by Holder, its agent, or unrelated third parties.

4. Holder shall be liable for damage or injury to the United States to the extent provided by 43 CFR Sec. 2883.1-4. Holder shall be held to a standard of strict liability for damage or injury to the United States resulting from pipe rupture, fire, or spills caused or substantially aggravated by any of the following within the right-of-way or permit area:

- a. Activities of Holder including, but not limited to: construction, operation, maintenance, and termination of the facility;
- b. Activities of other parties including, but not limited to:
 - (1) Land clearing
 - (2) Earth-disturbing and earth-moving work
 - (3) Blasting
 - (4) Vandalism and sabotage;

c. Acts of God.

The maximum limitation for such strict liability damages shall not exceed one million dollars (\$1,000,000) for any one event, and any liability in excess of such amount shall be determined by the ordinary rules of negligence of the jurisdiction in which the damage or injury occurred.

This section shall not impose strict liability for damage or injury resulting primarily from an act of war or from the negligent acts or omissions of the United States.

5. If, during any phase of the construction, operation, maintenance, or termination of the pipeline, any oil, salt water, or other pollutant should be discharged from the pipeline system, impacting Federal lands, the control and total removal, disposal, and cleaning up of such oil, salt water, or other pollutant, wherever found, shall be the responsibility of Holder, regardless of fault. Upon failure of Holder to control, dispose of, or clean up such discharge on or affecting Federal lands, or to repair all damages resulting therefrom, on the Federal lands, the Authorized Officer may take such measures as he/she deems necessary to control and clean up the discharge and restore the area, including, where appropriate, the aquatic environment and fish and wildlife habitats, at the full expense of Holder. Such action by the Authorized Officer shall not relieve Holder of any responsibility as provided herein.

6. All construction and maintenance activity shall be confined to the authorized right-of-way width of 20 feet. If the pipeline route follows an existing road or buried pipeline right-of-way, the surface pipeline shall be installed no farther than 10 feet from the edge of the road or buried pipeline right-of-way. If existing surface pipelines prevent this distance, the proposed surface pipeline shall be installed immediately adjacent to the outer surface pipeline. All construction and maintenance activity shall be confined to existing roads or right-of-ways.

7. No blading or clearing of any vegetation shall be allowed unless approved in writing by the Authorized Officer.

8. Holder shall install the pipeline on the surface in such a manner that will minimize suspension of the pipeline across low areas in the terrain. In hummocky of dune areas, the pipeline shall be "snaked" around hummocks and dunes rather than suspended across these features.

9. The pipeline shall be buried with a minimum of 24 inches under all roads, "two-tracks," and trails. Burial of the pipe will continue for 20 feet on each side of each crossing. The condition of the road, upon completion of construction, shall be returned to at least its former state with no bumps or dips remaining in the road surface.

10. The holder shall minimize disturbance to existing fences and other improvements on public lands. The holder is required to promptly repair improvements to at least their former state. Functional use of these improvements will be maintained at all times. The holder will contact the owner of any improvements prior to disturbing them. When necessary to pass through a fence line, the fence shall be braced on both sides of the passageway prior to cutting of the fence. No permanent gates will be allowed unless approved by the Authorized Officer.

11. In those areas where erosion control structures are required to stabilize soil conditions, the holder will install such structures as are suitable for the specific soil conditions being encountered and which are in accordance with sound resource management practices.

12. Excluding the pipe, all above-ground structures not subject to safety requirement shall be painted by the holder to blend with the natural color of the landscape. The paint used shall be a color which simulates "Standard Environmental Colors" – **Shale Green**, Munsell Soil Color No. 5Y 4/2; designated by the Rocky Mountain Five State Interagency Committee.

13. The pipeline will be identified by signs at the point of origin and completion of the right-of-way and at all road crossings. At a minimum, signs will state the holder's name, BLM serial number, and the product being transported. Signs will be maintained in a legible condition for the life of the pipeline.

14. The holder shall not use the pipeline route as a road for purposes other than routine maintenance as determined necessary by the Authorized Officer in consultation with the holder. The holder will take whatever steps are necessary to ensure that the pipeline route is not used as a roadway.

15. Any cultural and/or paleontological resource (historic or prehistoric site or object) discovered by the holder, or any person working on his behalf, on public or Federal land shall be immediately reported to the authorized officer. Holder shall suspend all operations in the immediate area of such discovery until written authorization to proceed is issued by the authorized officer. An evaluation of the discovery will be made by the authorized officer to determine appropriate cultural or scientific values. The holder will

be responsible for the cost of evaluation and any decision as to proper mitigation measures will be made by the authorized officer after consulting with the holder.

16. The operator shall be held responsible if noxious weeds become established within the areas of operations. Weed control shall be required on the disturbed land where noxious weeds exist, which includes the roads, powerline corridor, and adjacent land affected by the establishment of weeds due to this action. The operator shall consult with the Authorized Officer for acceptable weed control methods, which include following EPA and BLM requirements and policies.

17. Surface pipelines shall be less than or equal to 4 inches and a working pressure below 125 psi.

BURIED PIPELINE STIPULATIONS

A copy of the application (Grant, APD, or Sundry Notice) and attachments, including conditions of approval, survey plat and/or map, will be on location during construction. BLM personnel may request to you a copy of your permit during construction to ensure compliance with all stipulations.

Holder agrees to comply with the following stipulations to the satisfaction of the Authorized Officer:

1. The Holder shall indemnify the United States against any liability for damage to life or property arising from the occupancy or use of public lands under this grant.
2. The Holder shall comply with all applicable Federal laws and regulations existing or hereafter enacted or promulgated. In any event, the holder shall comply with the Toxic Substances Control Act of 1976 as amended, 15 USC 2601 et seq. (1982) with regards to any toxic substances that are used, generated by or stored on the right-of-way or on facilities authorized under this right-of-way grant. (See 40 CFR Part 702-799 and especially, provisions on polychlorinated biphenyls, 40 CFR 761.1-761.193.) Additionally, any release of toxic substances (leaks, spills, etc.) in excess of the reportable quantity established by 40 CFR Part 117 shall be reported as required by the Comprehensive Environmental Response, Compensation, and Liability Act, section 102b. A copy of any report required or requested by any Federal agency or State government as a result of a reportable release or spill of any toxic substances shall be furnished to the authorized officer concurrent with the filing of the reports to the involved Federal agency or State government.
3. The holder agrees to indemnify the United States against any liability arising from the release of any hazardous substance or hazardous waste (as these terms are defined in the Comprehensive Environmental Response, Compensation and Liability Act of 1980, 42 U.S.C. 9601, et seq. or the Resource Conservation and Recovery Act, 42 U.S.C. 6901, et

seq.) on the Right-of-Way (unless the release or threatened release is wholly unrelated to the Right-of-Way holder's activity on the Right-of-Way), or resulting from the activity of the Right-of-Way holder on the Right-of-Way. This agreement applies without regard to whether a release is caused by the holder, its agent, or unrelated third parties.

4. If, during any phase of the construction, operation, maintenance, or termination of the pipeline, any oil or other pollutant should be discharged from the pipeline system, impacting Federal lands, the control and total removal, disposal, and cleaning up of such oil or other pollutant, wherever found, shall be the responsibility of holder, regardless of fault. Upon failure of holder to control, dispose of, or clean up such discharge on or affecting Federal lands, or to repair all damages resulting therefrom, on the Federal lands, the Authorized Officer may take such measures as he deems necessary to control and clean up the discharge and restore the area, including where appropriate, the aquatic environment and fish and wildlife habitats, at the full expense of the holder. Such action by the Authorized Officer shall not relieve holder of any responsibility as provided herein.

5. All construction and maintenance activity will be confined to the authorized right-of-way.

6. The pipeline will be buried with a minimum cover of 36 inches between the top of the pipe and ground level.

7. The maximum allowable disturbance for construction in this right-of-way will be 30 feet:

- Blading of vegetation within the right-of-way will be allowed: maximum width of blading operations will not exceed 20 feet. The trench is included in this area. (*Blading is defined as the complete removal of brush and ground vegetation.*)
- Clearing of brush species within the right-of-way will be allowed: maximum width of clearing operations will not exceed 30 feet. The trench and bladed area are included in this area. (*Clearing is defined as the removal of brush while leaving ground vegetation (grasses, weeds, etc.) intact. Clearing is best accomplished by holding the blade 4 to 6 inches above the ground surface.*)
- The remaining area of the right-of-way (if any) shall only be disturbed by compressing the vegetation. (*Compressing can be caused by vehicle tires, placement of equipment, etc.*)

8. The holder shall stockpile an adequate amount of topsoil where blading is allowed. The topsoil to be stripped is approximately 6 inches in depth. The topsoil will be segregated from other spoil piles from trench construction. The topsoil will be evenly distributed over the bladed area for the preparation of seeding.

9. The holder shall minimize disturbance to existing fences and other improvements on public lands. The holder is required to promptly repair improvements to at least their former state. Functional use of these improvements will be maintained at all times. The holder will contact the owner of any improvements prior to disturbing them. When necessary to pass through a fence line, the fence shall be braced on both sides of the passageway prior to cutting of the fence. No permanent gates will be allowed unless approved by the Authorized Officer.

10. Vegetation, soil, and rocks left as a result of construction or maintenance activity will be randomly scattered on this right-of-way and will not be left in rows, piles, or berms, unless otherwise approved by the Authorized Officer. The entire right-of-way shall be recontoured to match the surrounding landscape. The backfilled soil shall be compacted and a 6 inch berm will be left over the ditch line to allow for settling back to grade.

11. In those areas where erosion control structures are required to stabilize soil conditions, the holder will install such structures as are suitable for the specific soil conditions being encountered and which are in accordance with sound resource management practices.

12. The holder will reseed all disturbed areas. Seeding will be done according to the attached seeding requirements, using the following seed mix.

- | | |
|---|--|
| <input type="checkbox"/> seed mixture 1 | <input checked="" type="checkbox"/> seed mixture 3 |
| <input type="checkbox"/> seed mixture 2 | <input type="checkbox"/> seed mixture 4 |
| <input type="checkbox"/> seed mixture 2/LPC | <input type="checkbox"/> Aplomado Falcon Mixture |

13. All above-ground structures not subject to safety requirements shall be painted by the holder to blend with the natural color of the landscape. The paint used shall be color which simulates "Standard Environmental Colors" – **Shale Green**, Munsell Soil Color No. 5Y 4/2.

14. The pipeline will be identified by signs at the point of origin and completion of the right-of-way and at all road crossings. At a minimum, signs will state the holder's name, BLM serial number, and the product being transported. All signs and information thereon will be posted in a permanent, conspicuous manner, and will be maintained in a legible condition for the life of the pipeline.

15. The holder shall not use the pipeline route as a road for purposes other than routine maintenance as determined necessary by the Authorized Officer in consultation with the holder before maintenance begins. The holder will take whatever steps are necessary to ensure that the pipeline route is not used as a roadway. As determined necessary during the life of the pipeline, the Authorized Officer may ask the holder to construct temporary deterrence structures.

16. Any cultural and/or paleontological resources (historic or prehistoric site or object) discovered by the holder, or any person working on his behalf, on public or Federal land shall be immediately reported to the Authorized Officer. Holder shall suspend all operations in the immediate area of such discovery until written authorization to proceed is issued by the Authorized Officer. An evaluation of the discovery will be made by the Authorized Officer to determine appropriate actions to prevent the loss of significant cultural or scientific values. The holder will be responsible for the cost of evaluation and any decision as to proper mitigation measures will be made by the Authorized Officer after consulting with the holder.

17. The operator shall be held responsible if noxious weeds become established within the areas of operations. Weed control shall be required on the disturbed land where noxious weeds exist, which includes associated roads, pipeline corridor and adjacent land affected by the establishment of weeds due to this action. The operator shall consult with the Authorized Officer for acceptable weed control methods, which include following EPA and BLM requirements and policies.

18. Escape Ramps - The operator will construct and maintain pipeline/utility trenches [that are not otherwise fenced, screened, or netted] to prevent livestock, wildlife, and humans from becoming entrapped. At a minimum, the operator will construct and maintain escape ramps, ladders, or other methods of avian and terrestrial wildlife escape in the trenches according to the following criteria:

- a. Any trench left open for eight (8) hours or less is not required to have escape ramps; however, before the trench is backfilled, the contractor/operator shall inspect the trench for wildlife, remove all trapped wildlife, and release them at least 100 yards from the trench.
- b. For trenches left open for eight (8) hours or more, earthen escape ramps (built at no more than a 30 degree slope and spaced no more than 500 feet apart) shall be placed in the trench.

IX. INTERIM RECLAMATION

During the life of the development, all disturbed areas not needed for active support of production operations should undergo interim reclamation in order to minimize the environmental impacts of development on other resources and uses.

Within six (6) months of well completion, operators should work with BLM surface management specialists (Jim Amos: 575-234-5909) to devise the best strategies to reduce the size of the location. Interim reclamation should allow for remedial well operations, as well as safe and efficient removal of oil and gas.

During reclamation, the removal of caliche is important to increasing the success of revegetating the site. Removed caliche that is free of contaminants may be used for road repairs, fire walls or for building other roads and locations. In order to operate the well or complete workover operations, it may be necessary to drive, park and operate on restored interim vegetation within the previously disturbed area. Disturbing revegetated areas for production or workover operations will be allowed. If there is significant disturbance and loss of vegetation, the area will need to be revegetated. Communicate with the appropriate BLM office for any exceptions/exemptions if needed.

All disturbed areas after they have been satisfactorily prepared need to be reseeded with the seed mixture provided below.

Upon completion of interim reclamation, the operator shall submit a Sundry Notices and Reports on Wells, Subsequent Report of Reclamation (Form 3160-5).

X. FINAL ABANDONMENT & RECLAMATION

At final abandonment, well locations, production facilities, and access roads must undergo "final" reclamation so that the character and productivity of the land are restored.

Earthwork for final reclamation must be completed within six (6) months of well plugging. All pads, pits, facility locations and roads must be reclaimed to a satisfactory revegetated, safe, and stable condition, unless an agreement is made with the landowner or BLM to keep the road and/or pad intact.

After all disturbed areas have been satisfactorily prepared, these areas need to be revegetated with the seed mixture provided below. Seeding should be accomplished by drilling on the contour whenever practical or by other approved methods. Seeding may need to be repeated until revegetation is successful, as determined by the BLM.

Operators shall contact a BLM surface protection specialist prior to surface abandonment operations for site specific objectives (Jim Amos: 575-234-5909).

Seed Mixture 3, for Shallow Sites

The holder shall seed all disturbed areas with the seed mixture listed below. The seed mixture shall be planted in the amounts specified in pounds of pure live seed (PLS)* per acre. There shall be no primary or secondary noxious weeds in the seed mixture. Seed will be tested and the viability testing of seed will be done in accordance with State law(s) and within nine (9) months prior to purchase. Commercial seed will be either certified or registered seed. The seed container will be tagged in accordance with State law(s) and available for inspection by the authorized officer.

Seed will be planted using a drill equipped with a depth regulator to ensure proper depth of planting where drilling is possible. The seed mixture will be evenly and uniformly planted over the disturbed area (smaller/heavier seeds have a tendency to drop the bottom of the drill and are planted first). The holder shall take appropriate measures to ensure this does not occur. Where drilling is not possible, seed will be broadcast and the area shall be raked or chained to cover the seed. When broadcasting the seed, the pounds per acre are to be doubled. The seeding will be repeated until a satisfactory stand is established as determined by the authorized officer. Evaluation of growth will not be made before completion of at least one full growing season after seeding.

Species to be planted in pounds of pure live seed* per acre:

<u>Species</u>	<u>lb/acre</u>
Plains Bristlegrass (<i>Setaria macrostachya</i>)	1.0
Green Sprangletop (<i>Leptochloa dubia</i>)	2.0
Sideoats Grama (<i>Bouteloua curtipendula</i>)	5.0

*Pounds of pure live seed:

Pounds of seed x percent purity x percent germination = pounds pure live seed