

# Carlsbad Field Office OCD Artesia

Form 3160-3  
(March 2012)

FORM APPROVED  
OMB No. 1004-0137  
Expires October 31, 2014

UNITED STATES  
DEPARTMENT OF THE INTERIOR  
BUREAU OF LAND MANAGEMENT

## APPLICATION FOR PERMIT TO DRILL OR REENTER

1a. Type of work: <input checked="" type="checkbox"/> DRILL <input type="checkbox"/> REENTER <b>SWD WELL</b>		5. Lease Serial No. NM-91078
1b. Type of Well: <input type="checkbox"/> Oil Well <input type="checkbox"/> Gas Well <input checked="" type="checkbox"/> Other <input checked="" type="checkbox"/> Single Zone <input type="checkbox"/> Multiple Zone		6. If Indian, Allottee or Tribe Name
2. Name of Operator RKI EXPLORATION & PRODUCTION, LLC.		7. If Unit or CA Agreement, Name and No.
3a. Address 210 PARK AVENUE, SUITE 900 OKLAHOMA CITY, OKLAHOMA 73102		8. Lease Name and Well No. LONGVIEW FEDERAL 12 SWD #5
3b. Phone No. (include area code) (405) 987-2226 (Sam McCurdy)		9. API Well No. 30-015-43596
4. Location of Well (Report location clearly and in accordance with any State requirements.) At surface 210 FNL & 1665 FEL SWD WELL At proposed prod. zone		10. Field and Pool, or Exploratory DEVONIAN
14. Distance in miles and direction from nearest town or post office* 15 MILES SOUTHEAST OF MALAGA, NM		11. Sec., T. R. M. or Blk. and Survey or Area SECTION 12, T. 23 S., R. 28 E.
15. Distance from proposed* location to nearest property or lease line, ft. (Also to nearest drig. unit line, if any) 175'	16. No. of acres in lease 800	17. Spacing Unit dedicated to this well N/A
18. Distance from proposed location* to nearest well, drilling, completed, applied for, on this lease, ft. 600' (12-2H)	19. Proposed Depth TD: 14,000'	20. BLM/BIA Bond No. on file NLM-NMB-000460
21. Elevations (Show whether DF, KDB, RT, GL, etc.) 3024' GL	22. Approximate date work will start* ASAP	23. Estimated duration 55 DAYS
24. Attachments		

The following, completed in accordance with the requirements of Onshore Oil and Gas Order No.1, must be attached to this form:

1. Well plat certified by a registered surveyor.
2. A Drilling Plan.
3. A Surface Use Plan (if the location is on National Forest System Lands, the SUPO must be filed with the appropriate Forest Service Office).
4. Bond to cover the operations unless covered by an existing bond on file (see Item 20 above).
5. Operator certification
6. Such other site specific information and/or plans as may be required by the BLM.

25. Signature <b>Barry W. Hunt</b>	Name (Printed/Typed) BARRY W. HUNT	Date 11/25/14
Title PERMIT AGENT FOR RKI EXPLORATION & PRODUCTION, LLC.		
Approved by (Signature) <b>STEPHEN J. CAFFEY</b>	Name (Printed/Typed)	AUG 31 2015
Title FIELD MANAGER	Office CARLSBAD FIELD OFFICE	

Application approval does not warrant or certify that the applicant holds legal or equitable title to those rights in the subject lease which would entitle the applicant to conduct operations thereon.  
Conditions of approval, if any, are attached.

APPROVAL FOR TWO YEARS

Title 18 U.S.C. Section 1001 and Title 43 U.S.C. Section 1212, make it a crime for any person knowingly and willfully to make to any department or agency of the United States any false, fictitious or fraudulent statements or representations as to any matter within its jurisdiction.

Must have approved C-108, MIT, and all regulatory requirements in place prior to injecting

\*(Instructions on page 2)

**JRD**

Carlsbad Controlled Water Basin

NM OIL CONSERVATION  
ARTESIA DISTRICT

JEP 03 2015

RECEIVED

**JRD**  
11/19/2016

SEE ATTACHED FOR  
CONDITIONS OF APPROVAL

APPROVAL SUBJECT TO  
GENERAL REQUIREMENTS  
AND SPECIAL STIPULATIONS  
ATTACHED

Must be in compliance with NMOCD  
Rule 5.9 prior to transporting/selling  
product.

# **RKI** Exploration & Production LLC

3817 NW Expressway, Suite 950, Oklahoma City, OK 73112  
405-949-2221 Fax 405-949-2223

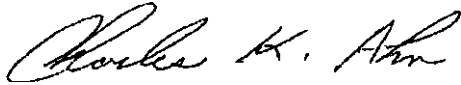
June 25<sup>th</sup>, 2012

To Whom It May Concern:

Please be advised that Mr. Barry Hunt has been retained by RKI Exploration & Production to sign as our agent on Application for Permit to Drill (APD) as well as Right of Way applications within the States of New Mexico and Texas.

If you have any questions or require additional information, please feel free to contact me at (405) 996-5771.

Sincerely,

A handwritten signature in cursive script, appearing to read "Charles K. Ahn".

Charles K. Ahn  
EH&S/Regulatory Manager

DISTRICT I  
1625 N. French Dr., Hobbs, NM 88240  
Phone: (575) 393-6161 Fax: (575) 393-6720

DISTRICT II  
811 S. First St., Artesia, NM 88210  
Phone: (575) 748-1283 Fax: (575) 748-9720

DISTRICT III  
1000 Rio Brazos Rd., Aztec, NM 87410  
Phone: (505) 734-6178 Fax: (505) 734-6170

DISTRICT IV  
1220 S. St. Francis Dr., Santa Fe, NM 87505  
Phone: (505) 476-3460 Fax: (505) 476-3462

State of New Mexico  
Energy, Minerals & Natural Resources Department  
OIL CONSERVATION DIVISION  
1220 South St. Francis Dr.  
Santa Fe, New Mexico 87505

Form C-102  
Revised August 1, 2011  
Submit one copy to appropriate  
District Office  
☐ AMENDED REPORT

WELL LOCATION AND ACREAGE DEDICATION PLAT

API Number <b>30-015-43596</b>	Pool Code <b>96101</b>	Pool Name <b>SWD, Devonian</b>
Property Code <b>215785</b>	Property Name <b>LONGVIEW FEDERAL 12 SWD</b>	Well Number <b>#5</b>
OGRID No. <b>246289</b>	Operator Name <b>RKI EXPLORATION &amp; PRODUCTION</b>	Elevation <b>3024'</b>

Surface Location

UL or lot no	Section	Township	Range	Lot Idn	Feet from the	North/South line	Feet from the	East/West line	County
<b>B</b>	<b>12</b>	<b>23 S</b>	<b>28 E</b>		<b>210</b>	<b>NORTH</b>	<b>1665</b>	<b>EAST</b>	<b>EDDY</b>

Bottom Hole Location If Different From Surface

UL or lot no.	Section	Township	Range	Lot Idn	Feet from the	North/South line	Feet from the	East/West line	County

Dedicated Acres	Joint or Infill	Consolidated Code	Order No.

No allowable will be assigned to this completion until all interests have been consolidated or a non-standard unit has been approved by the division.

NW COR SEC 12 NMSP-E (NAD 83) N (Y) = 482924.8' E (X) = 629059.3'	LONGVIEW FEDERAL 12 SWD #5 SHL NMSP-E (NAD 83) N (Y) = 482772.1' E (X) = 632757.4' LAT. = 32°19'36.71"N LONG. = 104°02'14.51"W	NE COR SEC 12 NMSP-E (NAD 83) N (Y) = 483007.7' E (X) = 634422.4'
	NMSP-E (NAD 27) N (Y) = 482712.4" E (X) = 591574.7" LAT. = 32.3267442°N LONG. = 104.0368704°W	
SW COR SEC 12 NMSP-E (NAD 83) N (Y) = 477666.7' E (X) = 629017.7'		SE COR SEC 12 NMSP-E (NAD 83) N (Y) = 477677.9' E (X) = 634407.8'

OPERATOR CERTIFICATION

I hereby certify that the information contained herein is true and complete to the best of my knowledge and belief, and that this organization either owns a working interest or unleased mineral interest in the land including the proposed bottom hole location or has a right to drill this well at this location pursuant to a contract with an owner of such a mineral or working interest, or to voluntary pooling agreement or a compulsory pooling order heretofore entered by the division.

*Barry W. Hunt* 9/16/14  
Signature Date

*Barry W. Hunt*  
Print Name

E-mail Address

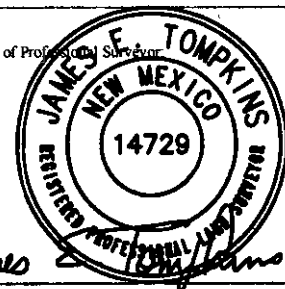
SURVEYORS CERTIFICATION

I hereby certify that the well location shown on this plat was plotted from field notes of actual surveys made by me or under my supervision, and that the same is true and correct to the best of my belief.

January 10, 2014

Date of Survey

Signature and Seal of Professional Surveyor

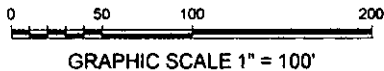
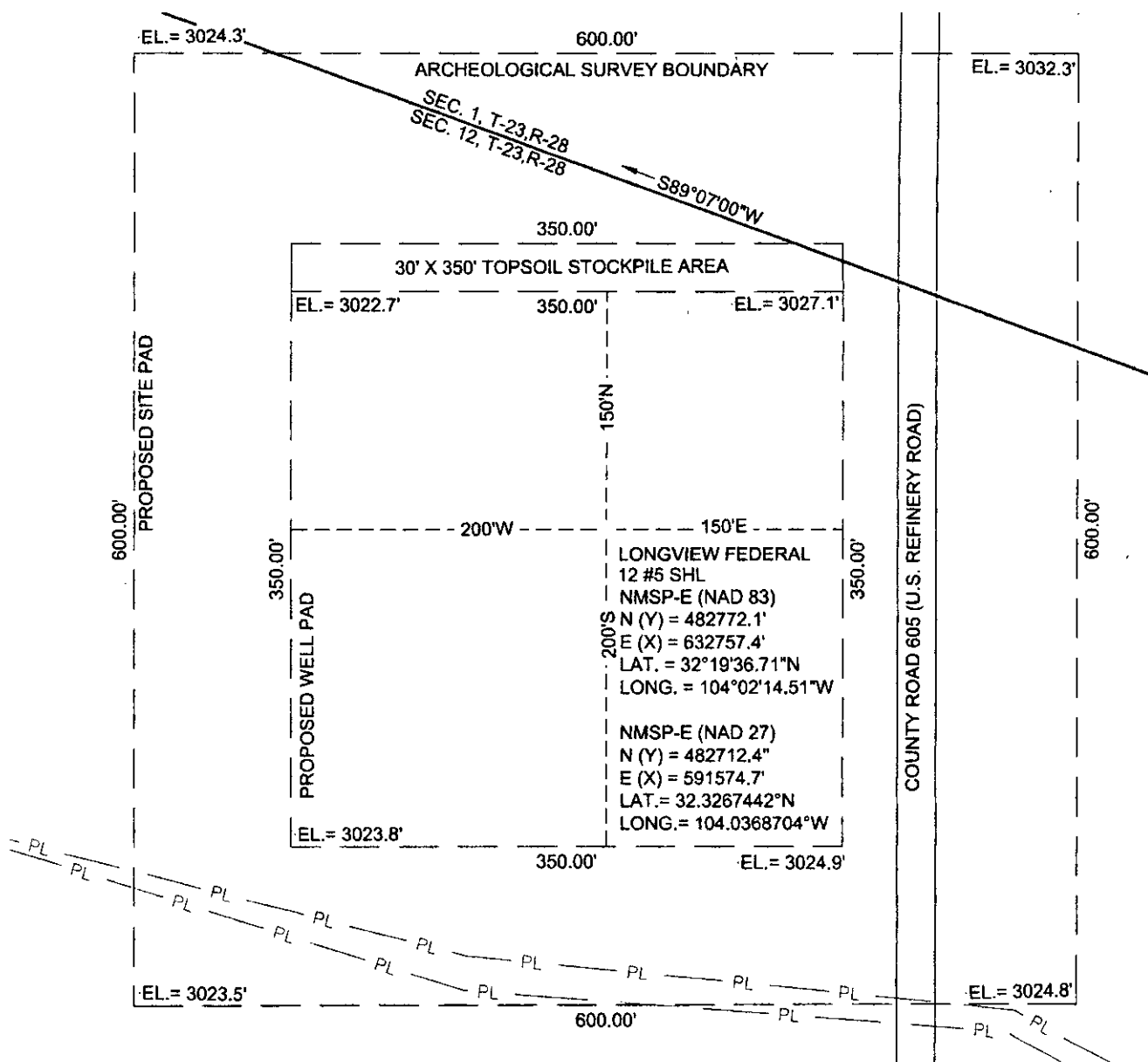


Job No. WTC49578

JAMES E. TOMPKINS 14729

Certificate Number

# SITE LOCATION



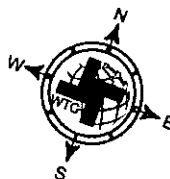
SECTION 12, T 23 S, R 28 E, N.M.P.M.

COUNTY: EDDY STATE: NM

DESCRIPTION: 210' FNL & 1665' FEL

OPERATOR: RKI EXPLORATION & PRODUCTION

WELL NAME: LONGVIEW FEDERAL 12 SWD #5



DRIVING DIRECTIONS:

FROM THE INTERSECTION OF STATE HIGHWAY 31 AND COUNTY ROAD 605, GO NORTH 0.3 MILE TO A POINT WHERE LOCATION IS 196 FEET WEST.



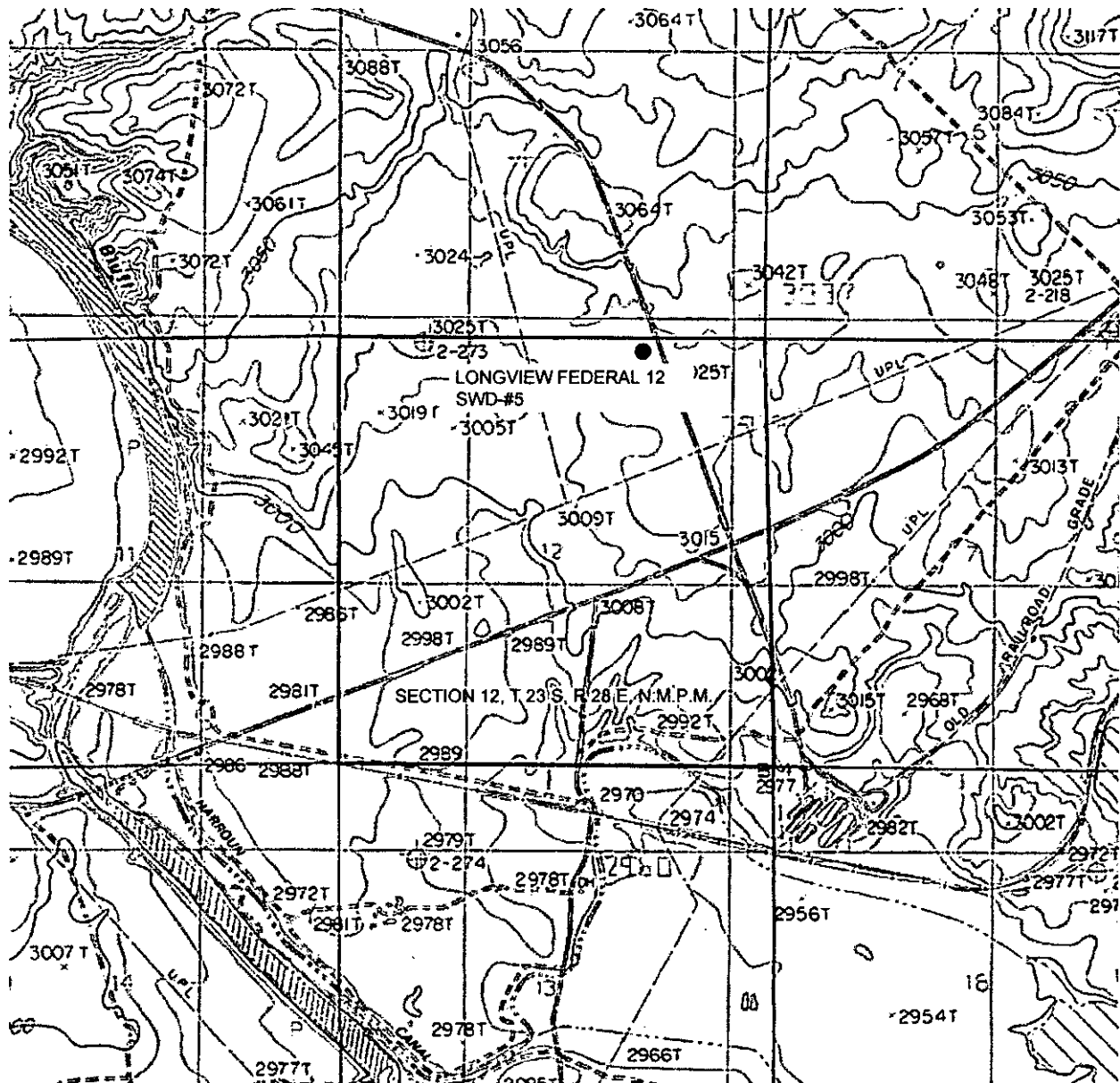
**WTC, INC.**  
405 S.W. 1st STREET  
ANDREWS, TEXAS 79714  
(432) 523-2181

**RKI EXPLORATION & PRODUCTION**

JOB No.: WTC49578

2. OBJECTIVE & USE: Survey/Map Labelation & Production V0378-01 Labelation, Stone 2 well, Longitude 8 Feb 2007 at a Precision State 23 S 28 E, 1665' FEL, 210' FNL, 12,3,4,5

# LOCATION VERIFICATION MAP



0 1000 2000 4000

GRAPHIC SCALE 1" = 2000'

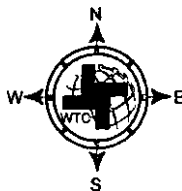
SECTION 12, T 23 S, R 28 E, N.M.P.M.

COUNTY: EDDY STATE: NM

DESCRIPTION: 210' FNL & 1665' FEL

OPERATOR: RKI EXPLORATION & PRODUCTION

WELL NAME: LONGVIEW FEDERAL 12 SWD #5



DRIVING DIRECTIONS:

FROM THE INTERSECTION OF STATE HIGHWAY 31 AND  
COUNTY ROAD 605, GO NORTH 0.3 MILE TO A POINT  
WHERE LOCATION IS 196 FEET WEST.

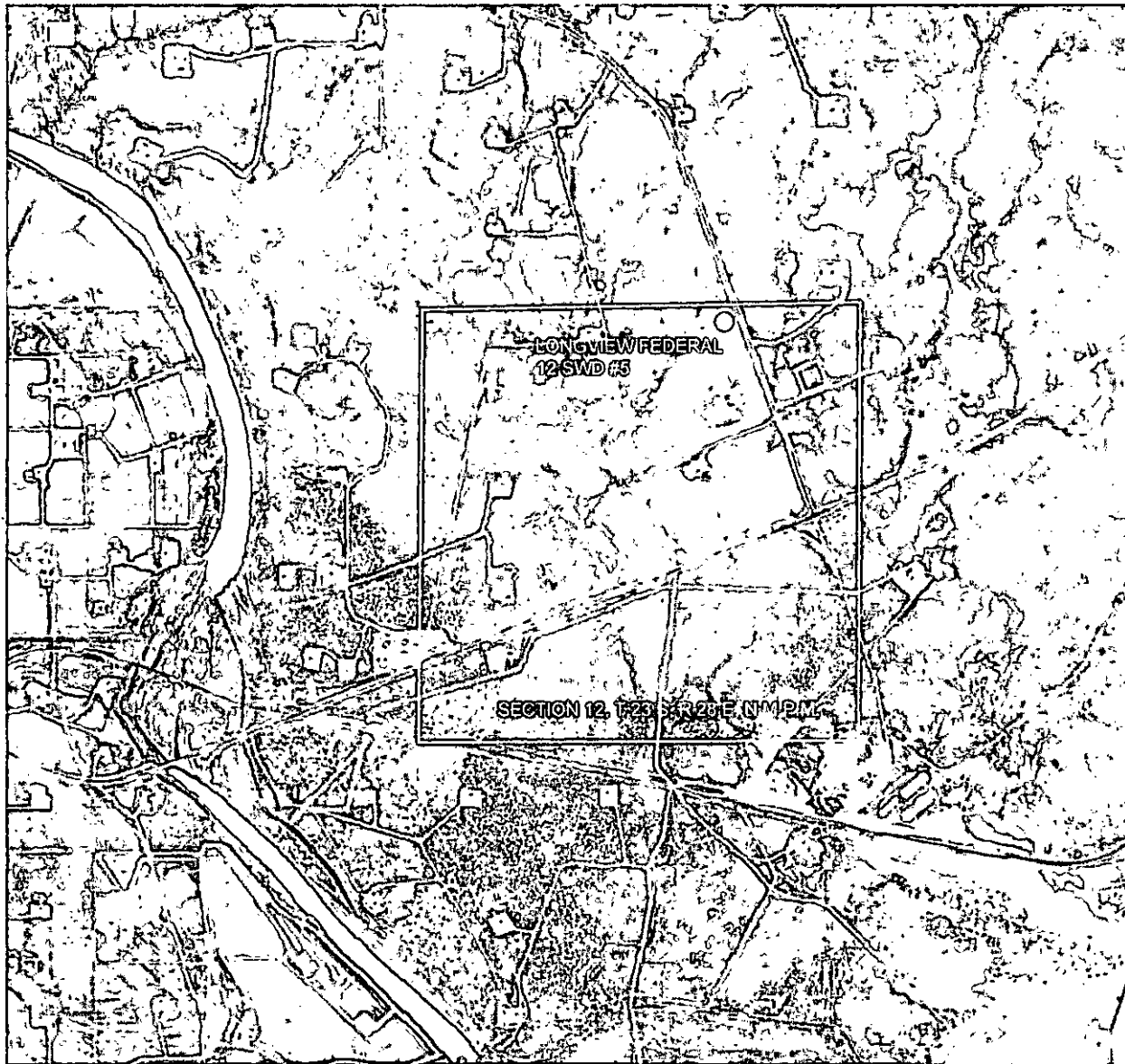


**WTC, INC.**  
405 S.W. 1st STREET  
ANDREWS, TEXAS 79714  
(432) 523-2181

**RKI EXPLORATION & PRODUCTION**

JOB No.: WTC49578

# AERIAL MAP



0 1000 2000 4000

GRAPHIC SCALE 1" = 2000'

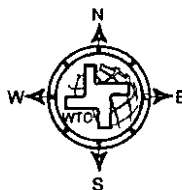
SECTION 12, T 23 S, R 28 E, N.42 M.

COUNTY: EDDY STATE: NM

DESCRIPTION: 210' FNL & 1665' FEL

OPERATOR: RKI EXPLORATION & PRODUCTION

WELL NAME: LONGVIEW FEDERAL 12 SWD #5



## DRIVING DIRECTIONS:

FROM THE INTERSECTION OF STATE HIGHWAY 31 AND  
COUNTY ROAD 605, GO NORTH 0.3 MILE TO A POINT  
WHERE LOCATION IS 196 FEET WEST.

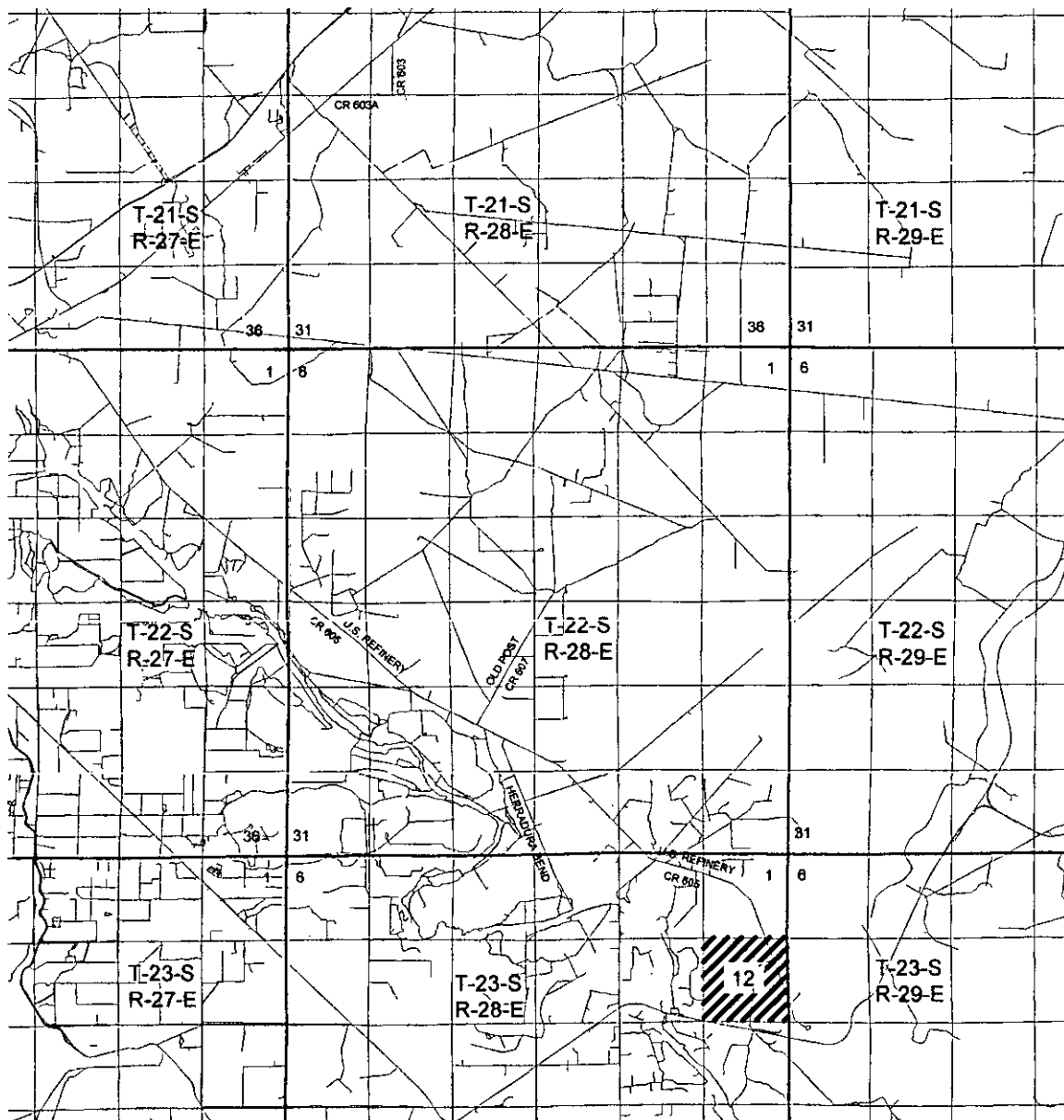


**WTC, INC.**  
405 S.W. 1st STREET  
ANDREWS, TEXAS 79714  
(432) 523-2181

**RKI EXPLORATION & PRODUCTION**

JOB No.: WTC49578

# VICINITY MAP



0 2 4 8  
GRAPHIC SCALE 1" = 2 MILE

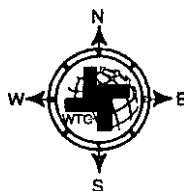
SECTION 12, T 23 S, R 28 E, N.M.P.M.

COUNTY: EDDY STATE: NM

DESCRIPTION: 210' FNL & 1665' FEL

OPERATOR: RKI EXPLORATION & PRODUCTION

WELL NAME: LONGVIEW FEDERAL 12 SWD #5



DRIVING DIRECTIONS:

FROM THE INTERSECTION OF STATE HIGHWAY 31 AND  
COUNTY ROAD 605, GO NORTH 0.3 MILE TO A POINT  
WHERE LOCATION IS 196 FEET WEST.



**WTC, INC.**  
405 S.W. 1st STREET  
ANDREWS, TEXAS 79714  
(432) 523-2181

**RKI EXPLORATION & PRODUCTION**

JOB No.: WTC48578

State of New Mexico  
Energy, Minerals and Natural Resources Department

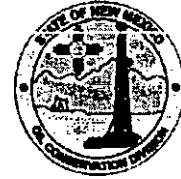
---

Susana Martinez  
Governor

David Martin  
Cabinet Secretary

Brett F. Woods, Ph.D.  
Deputy Cabinet Secretary

Jami Bailey, Division Director  
Oil Conservation Division



Administrative Order SWD-1489  
June 24, 2014

**ADMINISTRATIVE ORDER  
OF THE OIL CONSERVATION DIVISION**

Pursuant to the provisions of Division Rule 19.15.26.8B, NMAC, RKI Exploration and Production, LLC (the "operator") seeks an administrative order for its proposed Longview Federal 12 SWD Well No. 5 with a location of 210 feet from the North line and 1665 feet from the East line, Unit letter B of Section 12, Township 23 South, Range 28 East, NMPM, Eddy County, New Mexico, for produced water disposal purposes.

**THE DIVISION DIRECTOR FINDS THAT:**

The application has been duly filed under the provisions of 19.15.26.8B, NMAC and satisfactory information has been provided that affected parties as defined in said rule have been notified and no objections have been received within the prescribed waiting period. The applicant has presented satisfactory evidence that all requirements prescribed in 19.15.26.8 NMAC have been met and the operator is in compliance with 19.15.5.9 NMAC.

**IT IS THEREFORE ORDERED THAT:**

The applicant, RKI Exploration and Production, LLC (OGRID 246289), is hereby authorized to utilize its Longview Federal 12 SWD Well No. 5 (API 30-015-Pending) with a location of 210 feet from the North line and 1665 feet from the East line, Unit letter B of Section 12, Township 23 South, Range 28 East, NMPM, Eddy County, for disposal of oil field produced water (UIC Class II only) through open hole into an interval consisting of the Devonian, Silurian, and Ordovician formations from approximately 14000 feet to approximately 14994 feet. *If the upper contact of the Ordovician Ellenburger formation is encountered prior to the lower limit of the approved injection interval at 14994 feet, then the total depth of the well (and injection interval) shall be reduced to include only the upper 100 feet of Ellenburger formation.* Injection will occur through internally-coated, 5 ½-inch or smaller tubing and a packer set within 100 feet of the permitted interval.

**IT IS FURTHER ORDERED THAT:**

The operator shall take all steps necessary to ensure that the disposed water enters only the approved disposal interval and is not permitted to escape to other formations or onto the surface. This includes the well construction proposed and described in the application.

*The operator shall supply the Division with a copy of a mudlog over the permitted*

*disposal interval and an estimated insitu water salinity based on open-hole logs. If significant hydrocarbon shows occur while drilling, the operator shall notify the Division's district II and the operator shall be required to receive written permission prior to commencing disposal.*

*The operator shall conduct a cement bond log (or equivalent) showing final top of cement for the 9 5/8-inch casing as proposed in the application. The operator shall also provide a summary of depths (picks) for formation tops in the injection interval to the Division's district II office prior to commencing disposal.*

After installing tubing, the casing-tubing annulus shall be loaded with an inert fluid and equipped with a pressure gauge or an approved leak detection device in order to determine leakage in the casing, tubing, or packer. The casing shall be pressure tested from the surface to the packer setting depth to assure casing integrity.

The well shall pass an initial mechanical integrity test ("MIT") prior to initially commencing disposal and prior to resuming disposal each time the disposal packer is unseated. All MIT procedures and schedules shall follow the requirements in Division Rule 19.15.26.11A. NMAC. The Division Director retains the right to require at any time wireline verification of completion and packer setting depths in this well.

The wellhead injection pressure on the well shall be limited to **no more than 2800 psi**. In addition, the disposal well or system shall be equipped with a pressure limiting device in workable condition which shall, at all times, limit surface tubing pressure to the maximum allowable pressure for this well.

The Director of the Division may authorize an increase in tubing pressure upon a proper showing by the operator of said well that such higher pressure will not result in migration of the disposed fluid from the target formation. Such proper showing shall be demonstrated by sufficient evidence including but not limited to an acceptable Step-Rate Test.

The operator shall notify the supervisor of the Division's district II office of the date and time of the installation of disposal equipment and of any MIT so that the same may be inspected and witnessed. The operator shall provide written notice of the date of commencement of disposal to the Division's district office. The operator shall submit monthly reports of the disposal operations on Division Form C-115, in accordance with Division Rules 19.15.26.13 and 19.15.7.24 NMAC.

Without limitation on the duties of the operator as provided in Division Rules 19.15.29 and 19.15.30 NMAC, or otherwise, the operator shall immediately notify the Division's district II office of any failure of the tubing, casing or packer in the well, or of any leakage or release of water, oil or gas from around any produced or plugged and abandoned well in the area, and shall take such measures as may be timely and necessary to correct such failure or leakage.


The injection authority granted under this order is not transferable except upon division approval. The Division may require the operator to demonstrate mechanical integrity of any injection well that will be transferred prior to approving transfer of authority to inject.

The Division may revoke this injection permit after notice and hearing if the operator is in violation of 19.15.5.9 NMAC.

The disposal authority granted herein shall terminate two (2) years after the effective date of this order if the operator has not commenced injection operations into the subject well. One year after the last date of reported disposal into this well, the Division shall consider the well abandoned, and the authority to dispose will terminate *ipso facto*. The Division, upon written request mailed by the operator prior to the termination date, may grant an extension thereof for good cause.

Compliance with this order does not relieve the operator of the obligation to comply with other applicable federal, state or local laws or rules, or to exercise due care for the protection of fresh water, public health and safety and the environment.

Jurisdiction is retained by the Division for the entry of such further orders as may be necessary for the prevention of waste and/or protection of correlative rights or upon failure of the operator to conduct operations (1) to protect fresh or protectable waters or (2) consistent with the requirements in this order, whereupon the Division may, after notice and hearing, terminate the disposal authority granted herein.

  
JAMI BAILEY  
Director

JB/prg

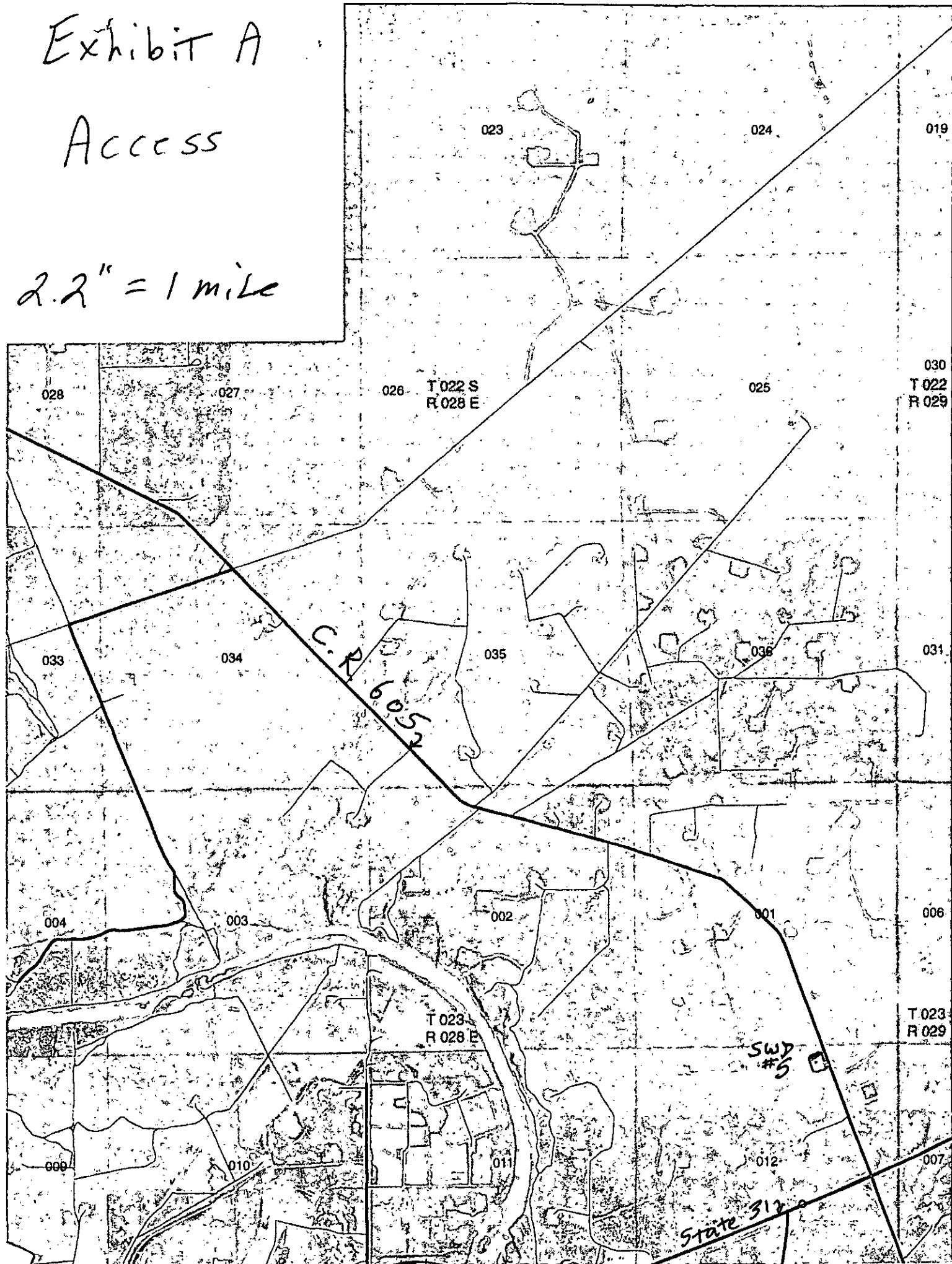
cc: Oil Conservation Division – Artesia District Office  
Bureau of Land Management – Carlsbad Office

[Administrative Application No. pMAM1410645588]

Exhibit A

Access

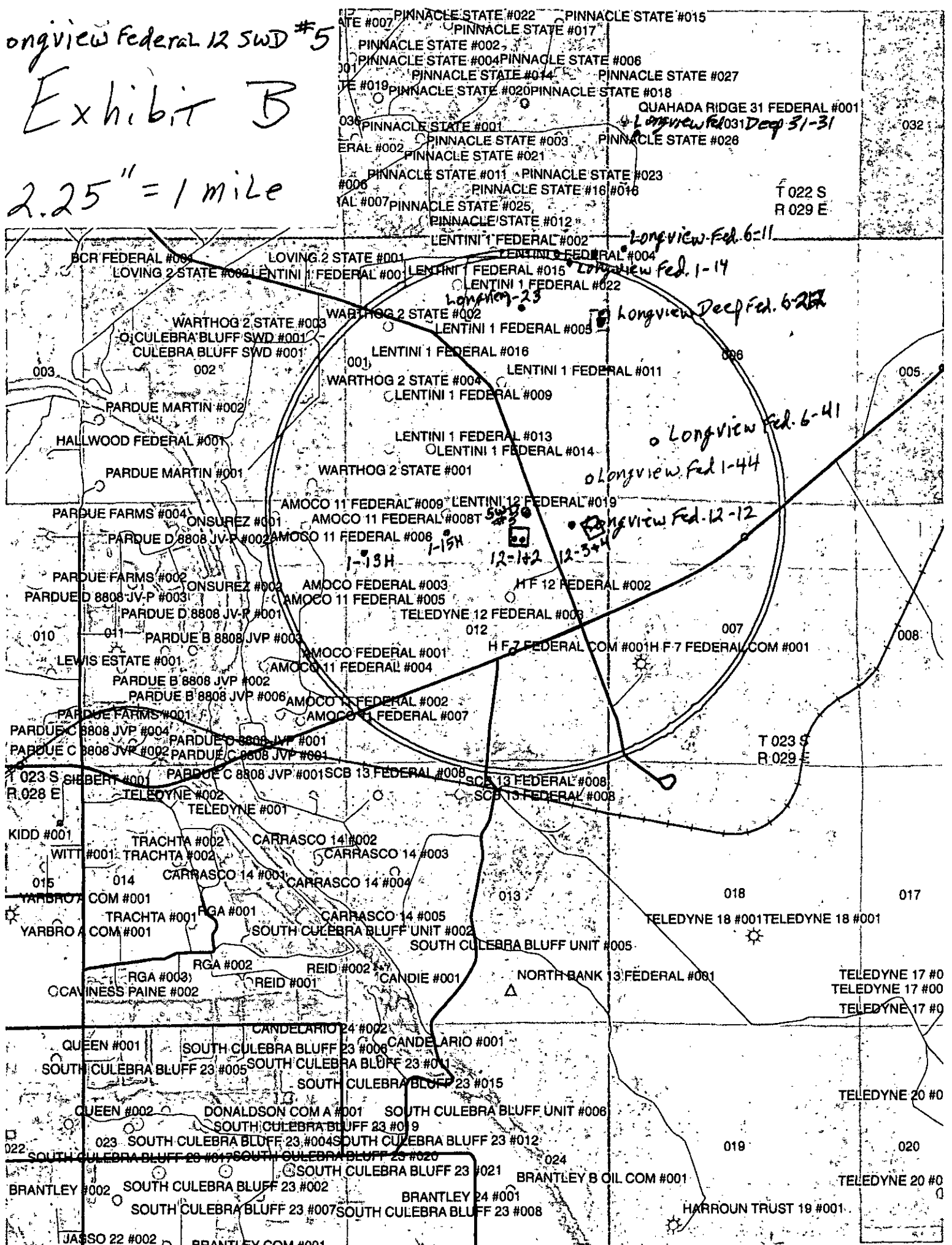
2.2" = 1 mile



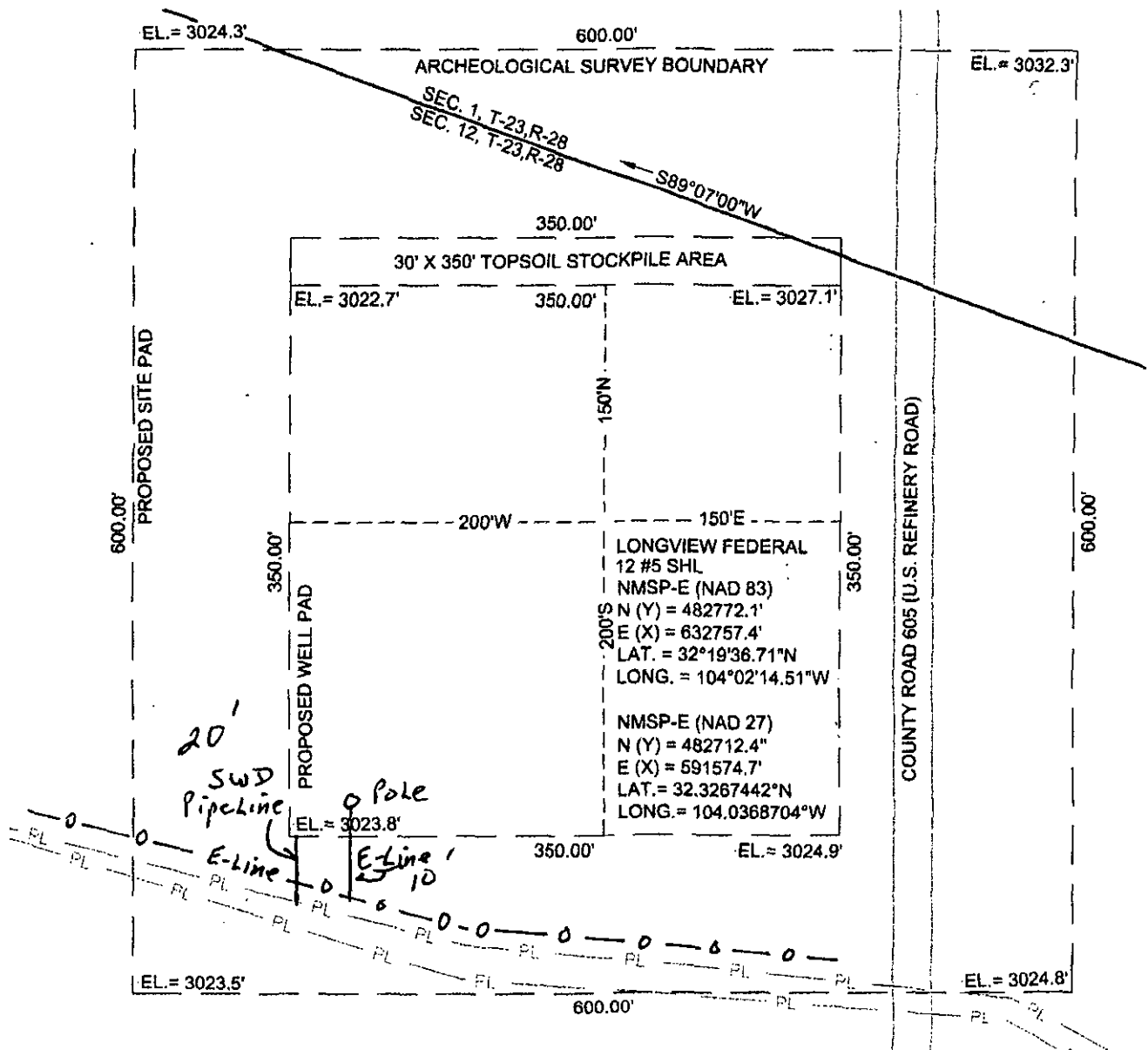
ongview Federal 12 SWD #5

Exhibit B

2.25" = 1 mile



# Exhibit E SITE LOCATION



0 50 100 200

GRAPHIC SCALE 1" = 100'

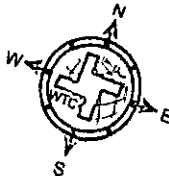
SECTION 12, T 23 S, R 28 E, N.M.P.M.

COUNTY: EDDY STATE: NM

DESCRIPTION: 210' FNL & 1665' FEL

OPERATOR: RKI EXPLORATION & PRODUCTION

WELL NAME: LONGVIEW FEDERAL 12 SWD #5



DRIVING DIRECTIONS:

FROM THE INTERSECTION OF STATE HIGHWAY 31 AND  
COUNTY ROAD 605, GO NORTH 0.3 MILE TO A POINT  
WHERE LOCATION IS 196 FEET WEST.



**WTC, INC.**  
405 S.W. 1st STREET  
ANDREWS, TEXAS 79714  
(432) 523-2181

**RKI EXPLORATION & PRODUCTION**

JOB No.: WTC49578

RKI Exploration & Production, LLC

Well Longview Federal SWD 12-5  
 Location Surface: 210 FNL 1,665 FEL Sec. 12-235-28E  
 Bottom Hole: 210 FNL 1,665 FEL Sec. 12-235-28E  
 County Eddy  
 State New Mexico

1) The elevation of the unprepared ground is 3,024 feet above sea level.

2) The geologic name of the surface formation is Quaternary - Alluvium.

3) A rotary rig will be utilized to drill the well to 14,994 feet and run casing.  
 This equipment will then be rigged down and the well will be completed with a  
 workover rig.

4) Proposed depth is 14,994 feet

5) Estimated tops:

	MD	TVD	
Rustler	533	533	
Salado	2,455	2,455	
Lamar Lime	2,735	2,735	
Delaware	2,831	2,831	
Cherry Canyon Sand	3,830	3,830	Oil 1,685 psi
Bone Springs	6,287	6,287	Oil 2,766 psi
Bone Springs 1st SS	7,329	7,329	Oil 3,225 psi
Bone Springs 2nd SS	8,096	8,096	Oil 3,562 psi
Bone Springs 3rd SS	9,387	9,387	Oil 4,130 psi
Wolfcamp	9,687	9,687	Oil 4,262 psi
Penn	11,183	11,183	4,921 psi
Strawn	11,405	11,405	5,018 psi
Atoka	11,809	11,809	5,196 psi
Morrow	12,240	12,240	5,386 psi
Barnett	12,995	12,995	5,718 psi
Woodford	13,700	13,700	6,028 psi
Devonian	13,830	13,830	6,085 psi
TD	14,994	14,994	6,597 psi

BHP = .44 psi/ft x depth

6) Casing program:

Hole Size	Top	Bottom	OD Csg	Wt/Grade	Connection	Collapse Design Factor	Burst Design Factor	Tension Design Factor
26"	0	<del>200</del> <del>600</del>	20"	94#/J-55	ST&C	1.97	15.98	13.90
17 1/2"	0	<del>2,789</del> 2,700	13 3/8"	68#/J-55	ST&C	1.59	5.62	3.56
12 1/4"	0	9,687	9 5/8"	53.5#/HCP-110	LT&C	2.08	5.11	2.74
8 1/2"	9,537	14,000	7"	32#/P-110	LT&C	2.19	4.05	6.28
6 1/8"	14,000	14,994	Open Hole	35				
Collapse	1.125							
Burst	1.0							
Tension	2.0							

Per Operator 8/31/15  
 CRW

7) Cement program:

**Surface** 26" hole  
 Pipe OD 20"  
 Setting Depth ~~200~~ 600 ft  
 Annular Volume 1.506 cf/ft  
 Excess 1.0 100 %

Lead 881 sx 1.75 cf/sk 9.13 gal/sk 13.5 ppg  
 Tail 200 sx 1.33 cf/sk 6.32 gal/sk 14.8 ppg

Lead: "C" + 4% PF20 + 2% PF1 + .125 pps PF29 + .2% PF46  
 Tail: "C" + 1% PF1

Top of cement: Surface

**Intermediate** 17 1/2" hole  
 Pipe OD 13 3/8"  
 Setting Depth ~~2100~~ 2,789 ft  
 Annular Volume 0.6947 cf/ft  
 Excess 0.5 50 %

Lead 1306 sx 1.92 cf/sk 9.95 gal/sk 12.6 ppg  
 Tail 200 sx 1.33 cf/sk 6.32 gal/sk 14.8 ppg

Lead: 35/65 Poz "C" + 5% PF44 + 6% PF20 + 3 pps PF42 + .125 pps PF29 + .2% PF46 + 1% PF1  
 Tail: "C" + .2% PF13

Top of cement: Surface

**Deep Intermediate** 12 1/4" hole  
 Pipe OD 9 5/8"  
 Setting Depth 9,687 ft  
 Annular Volume 0.3132 cf/ft  
 Excess 0.32 32 %  
 DV Tool Depth 5500 ft

**Stage 1**  
 Lead: 540 sx 2.48 cf/sk 11.94 gal/sk 11.9 ppg  
 Tail: 200 sx 1.48 cf/sk 9.53 gal/sk 13.0 ppg

Lead: 50/50 Poz H + 5% PF44 + 10% PF20 + .4% PF153 + .2% PF153 + .125 pps PF29 + .4 pps PF46 + 3 pps PF42  
 Tail: PVL + 1.3% PF44 + 5% PF606 + .35% PF813 + .1% PF153 + .4 pps PF45  
 Top of cement: DV tool

**Stage 2**  
 Lead: 536 sx 1.89 cf/sk 10.06 gal/sk 12.9 ppg  
 Tail: 175 sx 1.33 cf/sk 6.32 gal/sk 14.8 ppg

Lead: 35/65 Poz "C" + 5% PF44 (salt) + 6% PF20 (gel) + .125 pps PF29 (cellophane) + .25 pps PF46 (antifoam) + .2% PF13 (retarder)  
 Tail: "C" + .2% PF13 (retarder)  
 Top of cement: 2,489 ft

**Drilling Liner** 8 1/2" hole  
 Pipe OD 7"  
 Liner Top 9,537  
 Setting Depth 14,000 ft  
 Annular Volume 0.1268 cf/ft  
 Excess 0.32 32 %

Tail 505 sx 1.48 cf/sk 9.53 gal/sk 13.0 ppg  
 Tail: PVL + 1.3% PF44 + 5% PF606 + .35% PF813 + .1% PF153 + .4 pps PF45  
 Top of cement: 9,537 ft

WAG 4 4 2012

8) Pressure control equipment:

The blowout preventer equipment (BOP) shown in Exhibit #1 will consist of a double ram type (10,000 psi WP) preventer, a bag-type annular preventer (10,000 psi WP), and rotating head. Both units will be hydraulically operated and the ram type preventer will be equipped with blind rams on top and pipe rams (sized to accommodate the drill pipe size being utilized) on bottom. A diverting system will be NU on the 20" Surface casing. A 13 3/8" SOW x 13 5/8" 10M casing head will be installed on the 13 3/8" casing and utilized until total depth is reached. All BOP and associated equipment will be tested to 10,000 psi and the annular will be tested to 5,000 psi after setting the 13 3/8" string. The 13 3/8", 9 5/8" & 7" casing will be tested to .22 psi per ft of casing string length or 1,500 psi whichever is greater, but not to exceed 70% of the minimum yield. The 9 5/8" casing will be hung in the casing head and the stack will not be nipped down at this point. The stack will not be isolated and tested after running the 9 5/8" casing, but will be tested along with the 9 5/8" casing. Pipe rams will be operated and checked each 24 hour period and each time the drill string is out of the hole. These function test will be documented on the daily driller's log. A drilling spool or blowout preventer with 2 side outlets (choke side shall be 3" minimum diameter, kill side shall be at least 2" diameter).  
2 kill line valves, one of which will be a check valve.  
2 chokes on the manifold along with a pressure gauge.  
Upper kelly cock valve with handle available.  
Safety valve and subs to fit all drill string connections in use.  
All BOP equipment connections subjected to pressure will be flanged, welded, or clamped.  
Fill up line above the upper most preventer.

9) Mud program:

Top	Bottom	Mud Wt.	Vis	Fluid Loss	Type System	
	0	600	8.5 to 8.9	32 to 36	NC	Fresh Water
200	600	2,789	9.8 to 10.0	28 to 30	NC	Brine
2700	2,789	9,687	8.9 to 9.1	28 to 36	NC	Cut-Brine
	9,687	14,994	10 to 14	28 to 36	NC	Cut-Brine

10) Logging, coring, and testing program:

No drillstem test are planned  
Total depth to intermediate: CNL, Caliper, GR, DLL,  
Intermediate to surface: CNL, GR  
No coring is planned

11) Potential hazards:

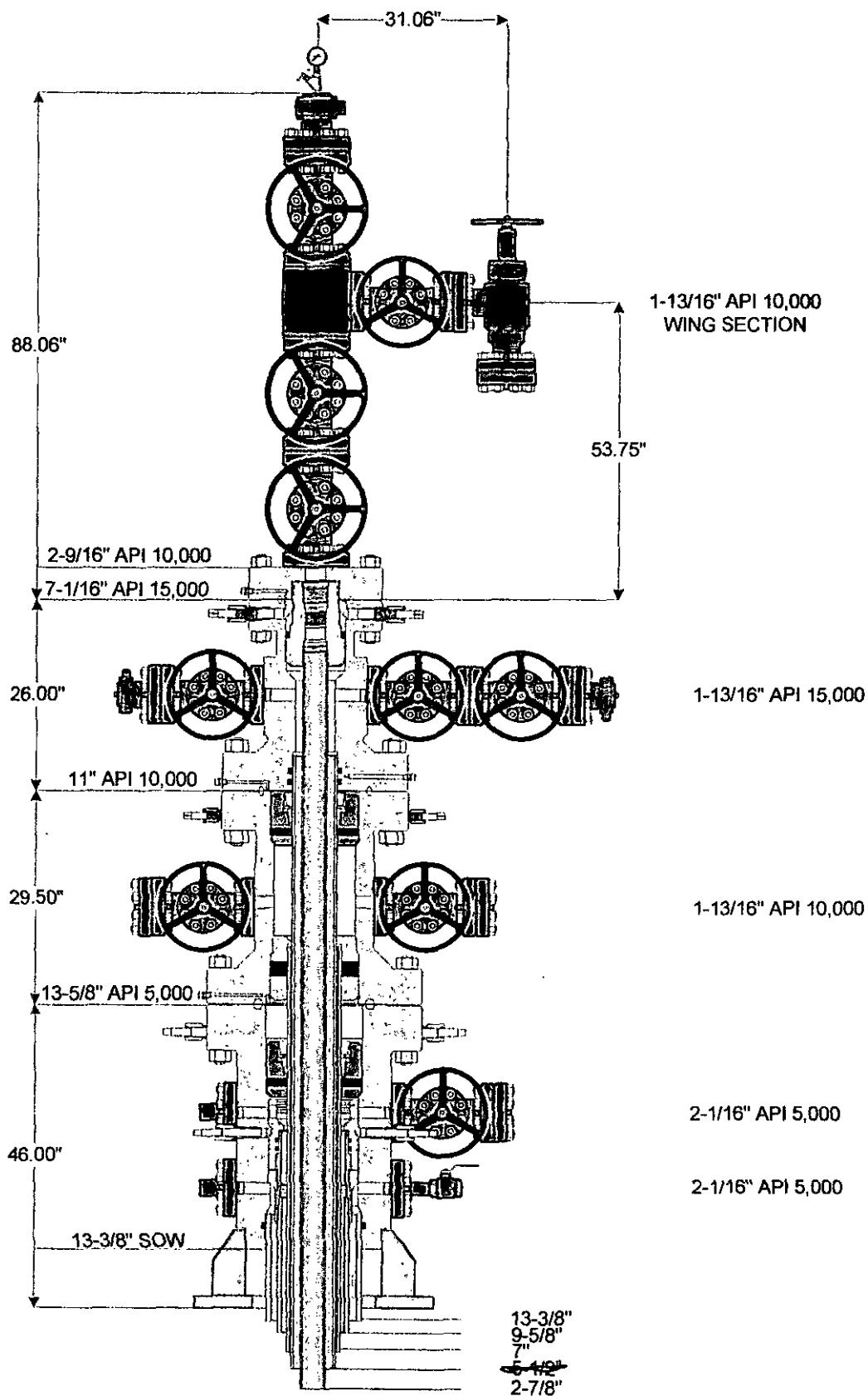
No abnormal pressures or temperatures are expected. There is no known presences of H2S in this area, although some form a of H2S detection equipment will be utilized. Gas and pit level monitoring equipment will be utilized below the 9 5/8" casing as deemed necessary. Lost circulation and weighting material will be available.

12) Anticipated start date                      ASAP  
Duration    55 days

JUN 18 2012

# multi-bowl wellhead

NOTE: THIS DRAWING IS NOT TO SCALE. THE DIMENSIONS REFLECTED ON THIS DRAWING ARE ESTIMATED DIMENSIONS AND ARE FOR REFERENCE ONLY.



**Weatherford**

© 2014 Weatherford All rights reserved

Customer: RKI EXPLORATION & PRODUCTION LLC	Project No.: 103983	Quote No.: 220542
Project Name: PERMIAN BASIN-LOVING COUNTY-WFT-MBU SYSTEM	Date: 06-04-2014	Drawn By: RL

## 20" Diverter System

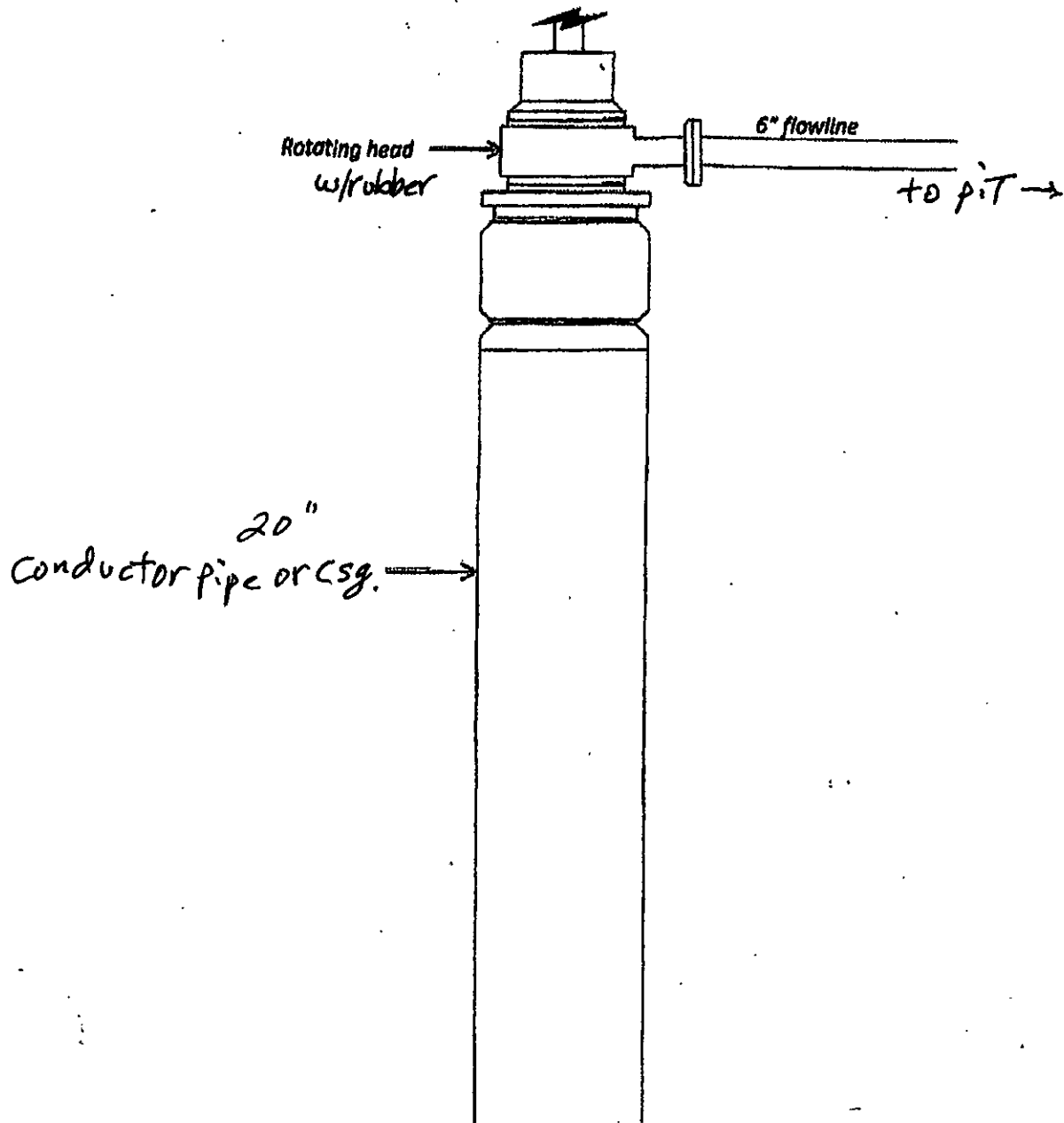
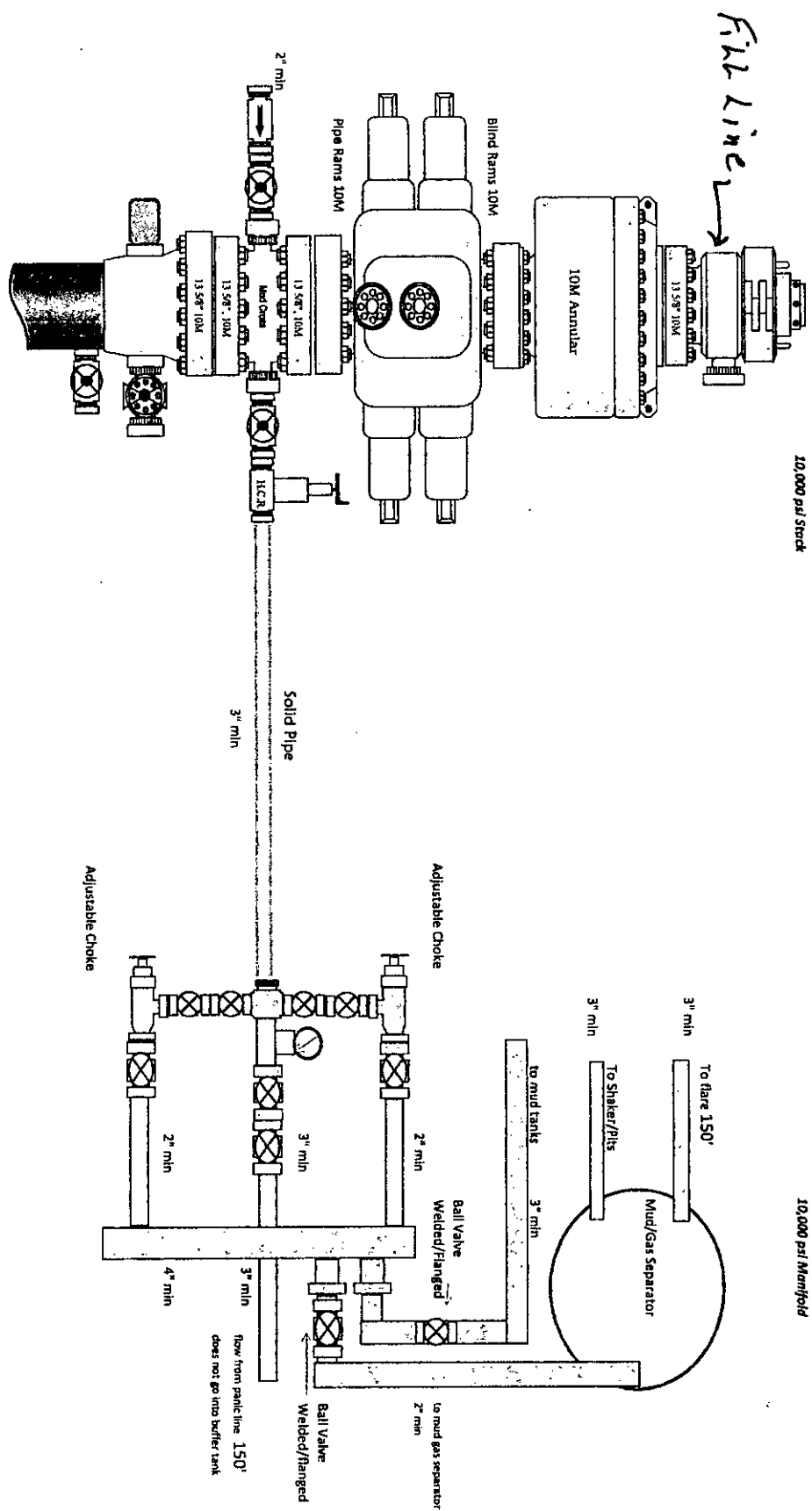


Exhibit E-1 - 20" Diverter System



RKI Exploration and Production  
3817 N. W. Expressway, Suite 950  
Oklahoma City, OK. 73112

## **Closed Loop System**

### Design Plan

#### *Equipment List*

- 2 – 414 Swaco Centrifuges
- 2 – 4 screen Mongoose shale shakers
- 2 – 250 bbl. tanks to hold fluid
- 2 – CRI Bins with track system
- 2 – 500 bbl. frac tanks for fresh water
- 2 – 500 bbl. frac tanks for brine water

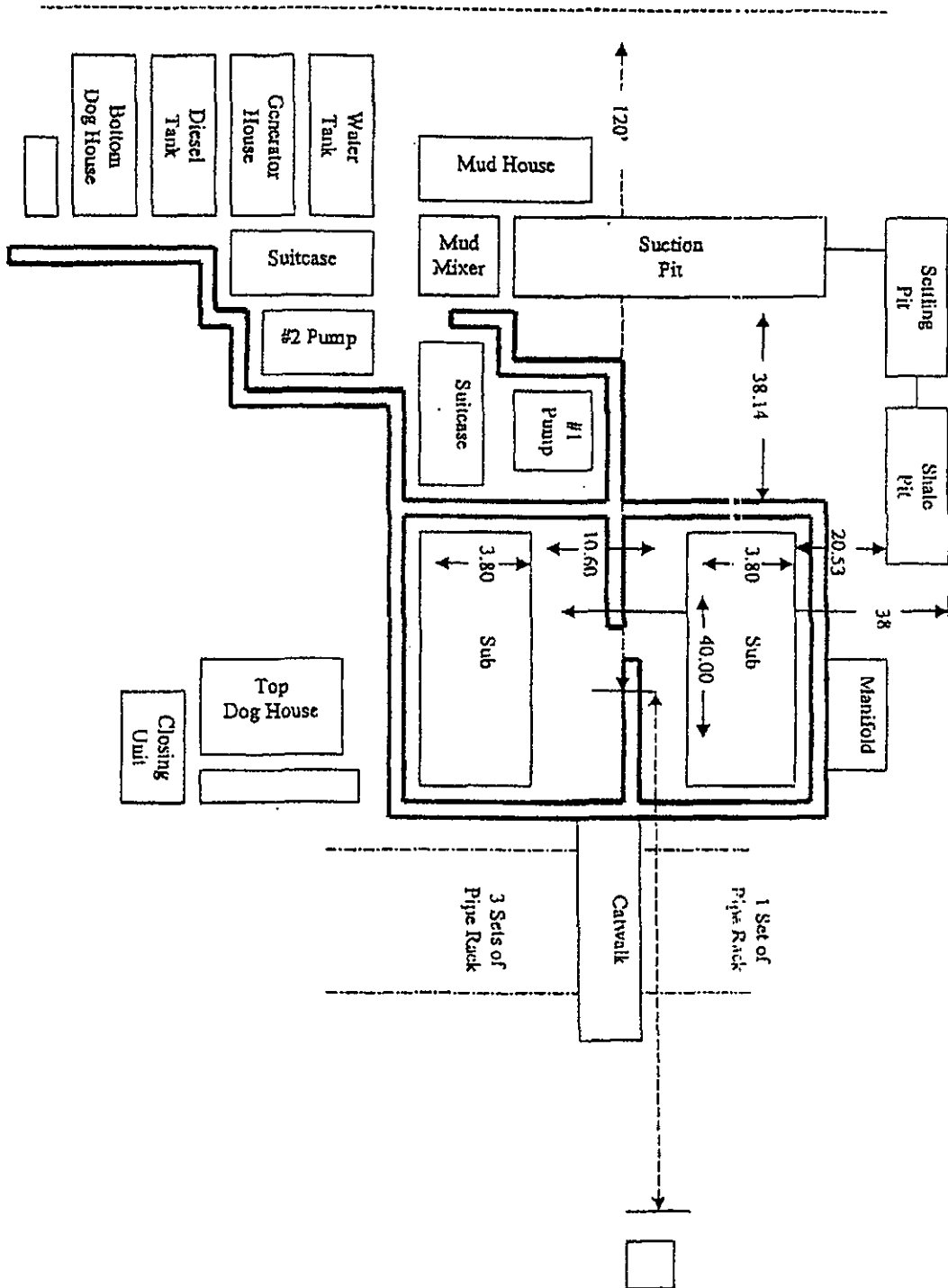
### Operation and Maintenance

- Closed Loop equipment will be inspected daily by each tour and any necessary maintenance performed
- Any leak in system will be repaired and/or contained immediately
- OCD notified within 48 hours
- Remediation process started

### Closure Plan

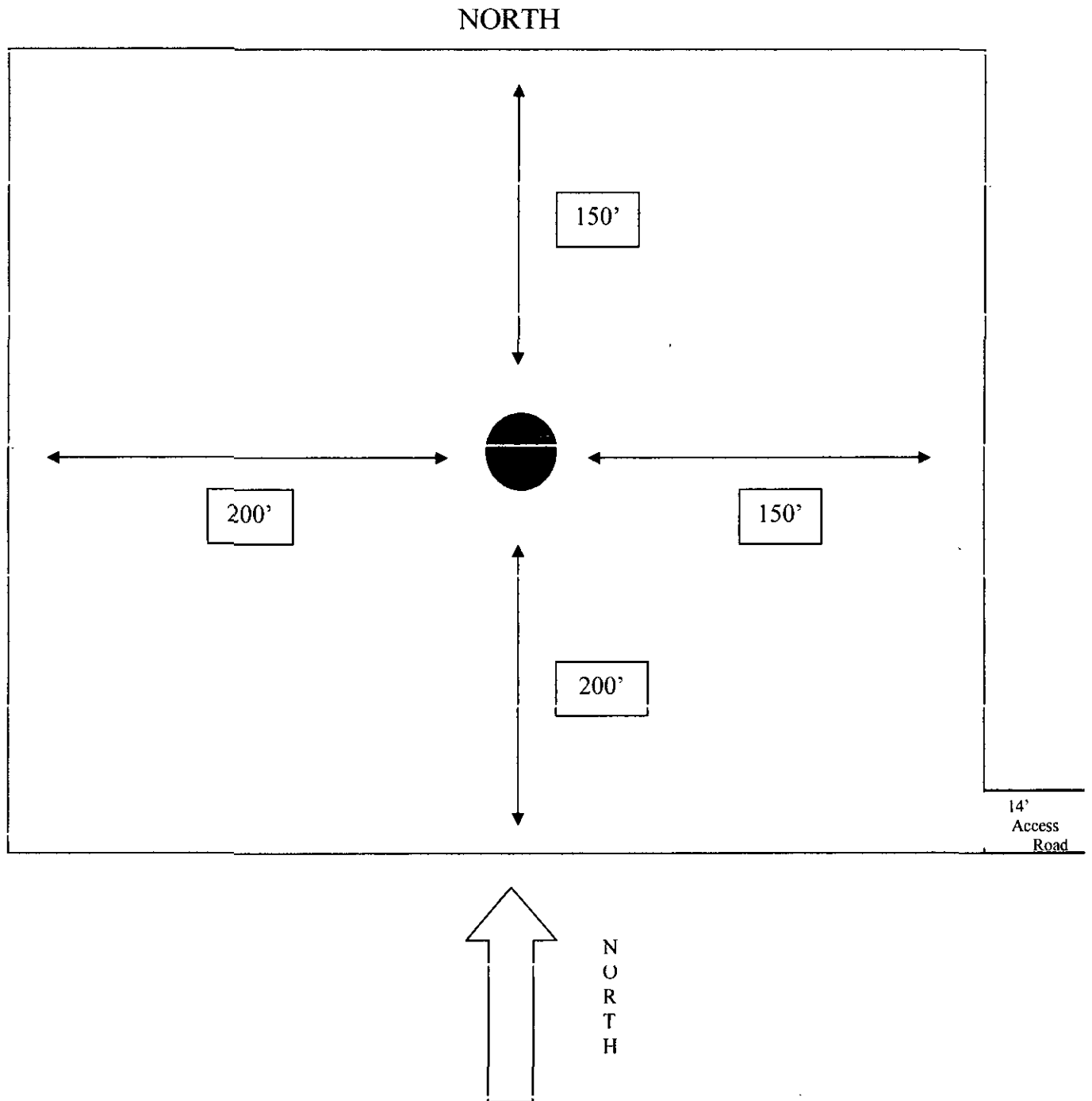
During drilling operations, all liquids, drilling fluids and cuttings will be hauled off via CRI (Controlled Recovery Incorporated). Permit #: R-9166.

# Plat for Closed Loop System



**EXHIBIT D**

**Rig Plat Only  
LONGVIEW FED 12 SWD #5  
V-DOOR EASTNORTHEAST**



# **RKI Exploration & Production**

## **HYDROGEN SULFIDE (H<sub>2</sub>S) CONTINGENCY DRILLING PLAN**

This well and its anticipated facility are not expected to have hydrogen sulfide releases. However, there may be hydrogen sulfide production in the nearby area. There are no private residences in the area but a contingency plan has been orchestrated. RKI Exploration & Production will have a company representative available to rig personnel throughout the drilling and production operations. If hydrogen sulfide is detected or suspected, monitoring equipment will be acquired for monitoring and or testing.

### **GENERAL H<sub>2</sub>S EMERGENCY ACTIONS**

1. All personnel will immediately evacuate to an up-wind and if possible up- hill "safe area".
2. If for any reason a person must enter the hazardous area, they must wear a SCBA (Self Contained Breathing Apparatus).
3. Always use the "buddy system"
4. Isolate the well/problem if possible
5. Account for all personnel
6. Display the proper colors warning all unsuspecting personnel of the danger at hand.
7. Contact the Company personnel as soon as possible if not at the location (use the enclosed call list)

All communication will be via two-way radio or cell phone.

At this point the company representative will evaluate the situation and coordinate the necessary duties to bring the situation under control, and if necessary, the notification of the emergency response agencies and nearby residents.

### **EMERGENCY PROCEDURES FOR AN UNCONTROLLABLE RELEASE OF H<sub>2</sub>S**

1. All personnel will don the self-contained breathing apparatus
2. Remove all personnel to the "safe area" (always use the buddy system)
3. Contact company personnel if not on location
4. Set in motion the steps to protect and or remove the general public to an upwind "safe area". Maintain strict security and safety procedures while dealing with the source.
5. No entry to any unauthorized personnel
6. Notify the appropriate agencies.
7. Call NMOCD

If at this time the supervising person determines the release of the H<sub>2</sub>S cannot be contained to the site location and the general public is in danger he will take the necessary steps to protect the workers and the public.

**EMERGENCY CALL LIST (Start and continue until ONE of these people has been contacted)**

RKI Exploration & Production	1-800-667-6958
Frank Collins	575-725-9334
Ken Fairchild	405-693-6051
Lonnie Catt	575-202-1444
Brent Umberham	405-623-5080
Tim Haddican	405-823-2872

**EMERGENCY RESPONSE NUMBERS**

State Police	Eddy County	575-748-9718
State Police	Lea County	575-392-5588
Sheriff	Eddy County	575-746-2701
Emergency Medical	Eddy County	911 or 505-746-2701
Ambulance	Lea County	911 or 505-394-3258
Emergency Response	Eddy County SERC	575-476-2701
Carlsbad Police Dept		575-885-2111
Carlsbad Fire Dept		575-885-3125
Loco Hills Police Dept		575-677-2349
Jal Police Dept		575-395-2501
Jal Fire Dept		575-394-3258
Jal Abulance		575-395-2221
NMOCD	District 1 (Lea, Roosevelt, Curry)	575-393-6161
	District 2 (Eddy, Chavez)	575-392-2973
Baker	Artesia	575-746-3140
Halliburton	Artesia	1-800-523-2482
	Hobbs	1-800-523-2482
ParFive	Artesia	575-748-1288
Wild Well Control	Midland	432-550-6202

## **PROTECTION OF THE GENERAL PUBLIC**

1. 100 ppm at any public area (any place not associated with this site)
2. 500 ppm at any public road (any road the general public may travel)
3. 100 ppm radius of ¼ mile in New Mexico will be assumed if there is insufficient data to calculate radius of exposure and there is reasonable expectation that H<sub>2</sub>S could be present in concentrations greater than 100 ppm in the gas mixture.

## **CALCULATION FOR THE 100 PPM (ROE) "PASQUILL-GIFFORD EQUATION**

$$X = ((1.589)(\text{mole fraction})(Q - \text{volume in scf}))^{0.6258}$$

## **CALCULATION FOR THE 500 PPM (ROE)**

$$X = ((.4546)(\text{mole fraction})(Q - \text{volume in scf}))^{0.6258}$$

Example:

A well is determined to have 150 / 500 ppm H<sub>2</sub>S in the gas mixture and the well/facility is producing at a gas rate of 100 mcf/d

150 ppm

$$X = ((1.589)(150/100,000)(100,000))^{0.6258} = 7 \text{ ft}$$

500 ppm

$$X = ((.4546)(500/100,000)(100,000))^{0.6258} = 3.3 \text{ ft}$$

These calculations will be forwarded to the appropriate NMOCD office when applicable

## **PUBLIC EVACUATION PLAN**

1. Notification of the emergency response agencies of the hazardous condition and implement evacuation procedures.
2. A trained person in H<sub>2</sub>S safety shall monitor with detection equipment the H<sub>2</sub>S concentration, wind and area of exposure. This person will determine the outer perimeter of the hazardous area. The extent of the evaluation area will be determined from the data being collected.
3. Law enforcement shall be notified to set up necessary barriers and maintain such for the duration of the situation as well as aid in the evacuation procedure. The company supervisor shall stay in communications with all agencies through the duration of the situation and inform them when the situation has been contained and the affected area(s) is safe to enter.

## **IGNITION OF THE GAS**

1. Human life and or property are in danger
2. There is no hope of bringing the situation under control with the prevailing conditions at the site
3. Two people are required. They must be equipped with positive pressure, self-contained breathing apparatus and "D" ring style full body, OSHA approved safety harness. Non-flammable rope will be attached.
4. One of the people will be qualified safety person who will test the atmosphere for H<sub>2</sub>S, oxygen and LFL. The other person will be the company supervisor, he is responsible for igniting the well.
5. Ignite up wind from a distance no closer than necessary. Before igniting, make a final check of combustible gases.
6. Following ignition, continue with the emergency actions and procedures as before.

## Characteristics of H<sub>2</sub>S and SO<sub>2</sub>

Common Name	Chemical Formula	Specific Gravity	Threshold Limit	Hazardous Limit	Lethal Concentration
Hydrogen Sulfide	H <sub>2</sub> S	1.189 Air= 1	10 ppm	100 ppm/hr	600 ppm
Sulfur Dioxide	SO <sub>2</sub>	2.21 Air= 1	2ppm	N/A	1000 ppm

## REQUIRED EMERGENCY EQUIPMENT

### 1. Breathing apparatus

Rescue Packs (SCBA) – 1 unit shall be placed at each breathing area, 2 shall be stored in the safety trailer with radio communications.

Work/Escapes Packs – 4 packs shall be stored on the rig floor with sufficient air hose not to restrict work activity.

Emergency Escape Packs – 4 – packs shall be stored in the doghouse for emergency evacuation.

### 2. Signage and Flagging

One color cod condition sign will be placed at the entrance to the site indicating possible conditions at the site

A colored conditions flag will be on display, indicating the conditions at the site at the time

### 3. Briefing Area (see attachment)

### 4. Wind Socks

Two windsocks will be placed in strategic locations, visible from all angles

### 5. H<sub>2</sub>S Detectors & Alarms

The stationary detector with three sensors will be placed in the upper dog house if equipped, set to visually alarm @ 10 ppm and audible at 14 ppm. Calibrate a minimum of every 30 days or as needed. The sensors will be placed in the following places: (gas sample tubes will be stored in the safety trailer)

Rig floor

Bell nipple

End of flow line or where well bore fluid is being discharged

### 6. Auxiliary Rescue Equipment and misc.

Stretcher

Two OSHA full body harnesses

100 ft. 5/8" OSHA approved rope

1 – 20# class ABC fire extinguisher

Communication via cell phones on location and vehicles on location

Flare gun/flares

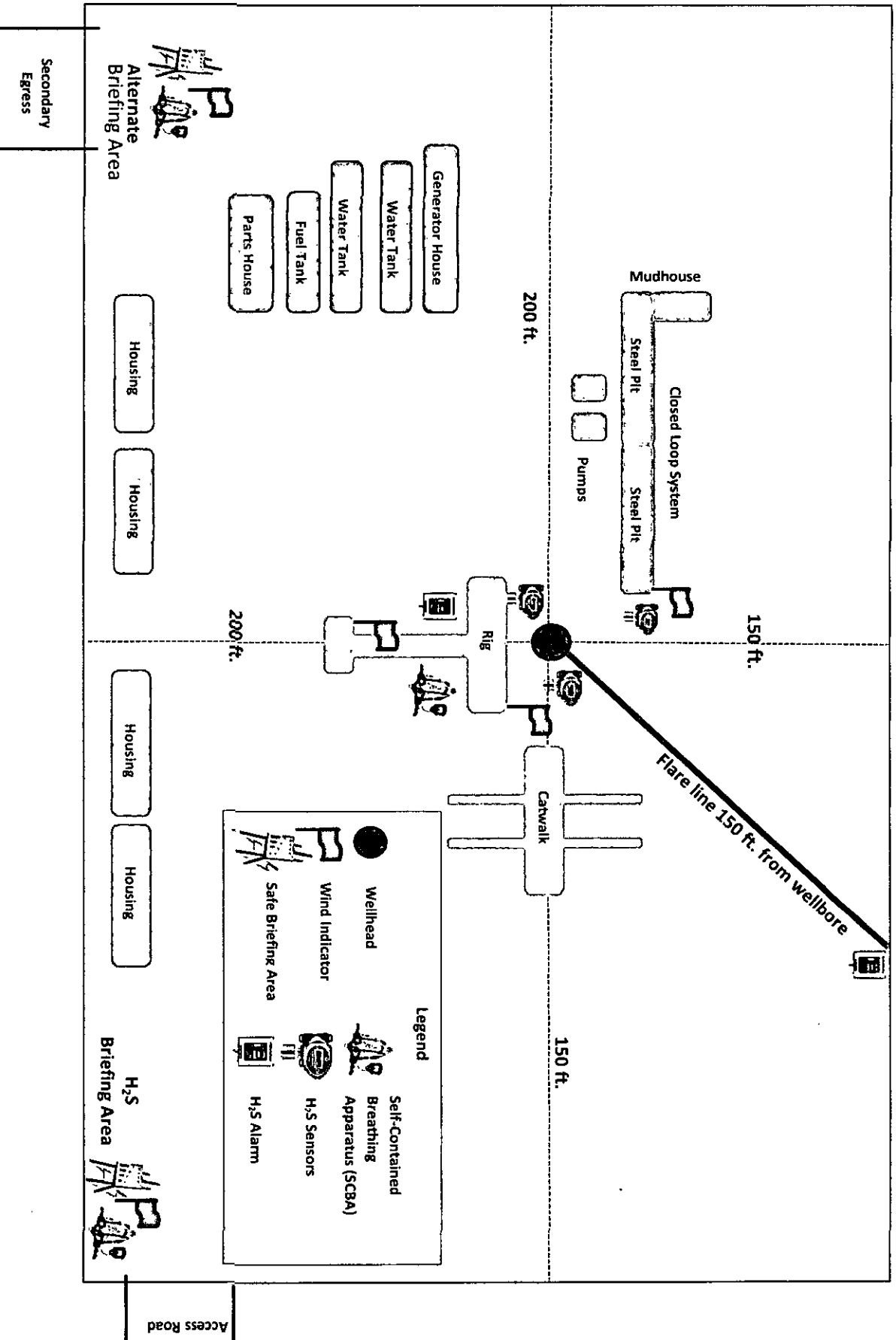
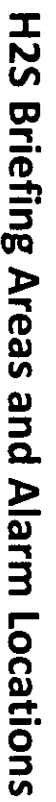
## **Well Control Equipment**

### **1. BOP Equipment**

- 5,000 psi blowout preventer (pipe and blind rams)
- 5,000 psi annular preventer
- 5,000 psi rotating head
- 5,000 choke manifold (equipped with hydraulic choke)
- Mud/gas separator
- Flare stack with solar powered igniter (with battery backup igniter) 150' from the well

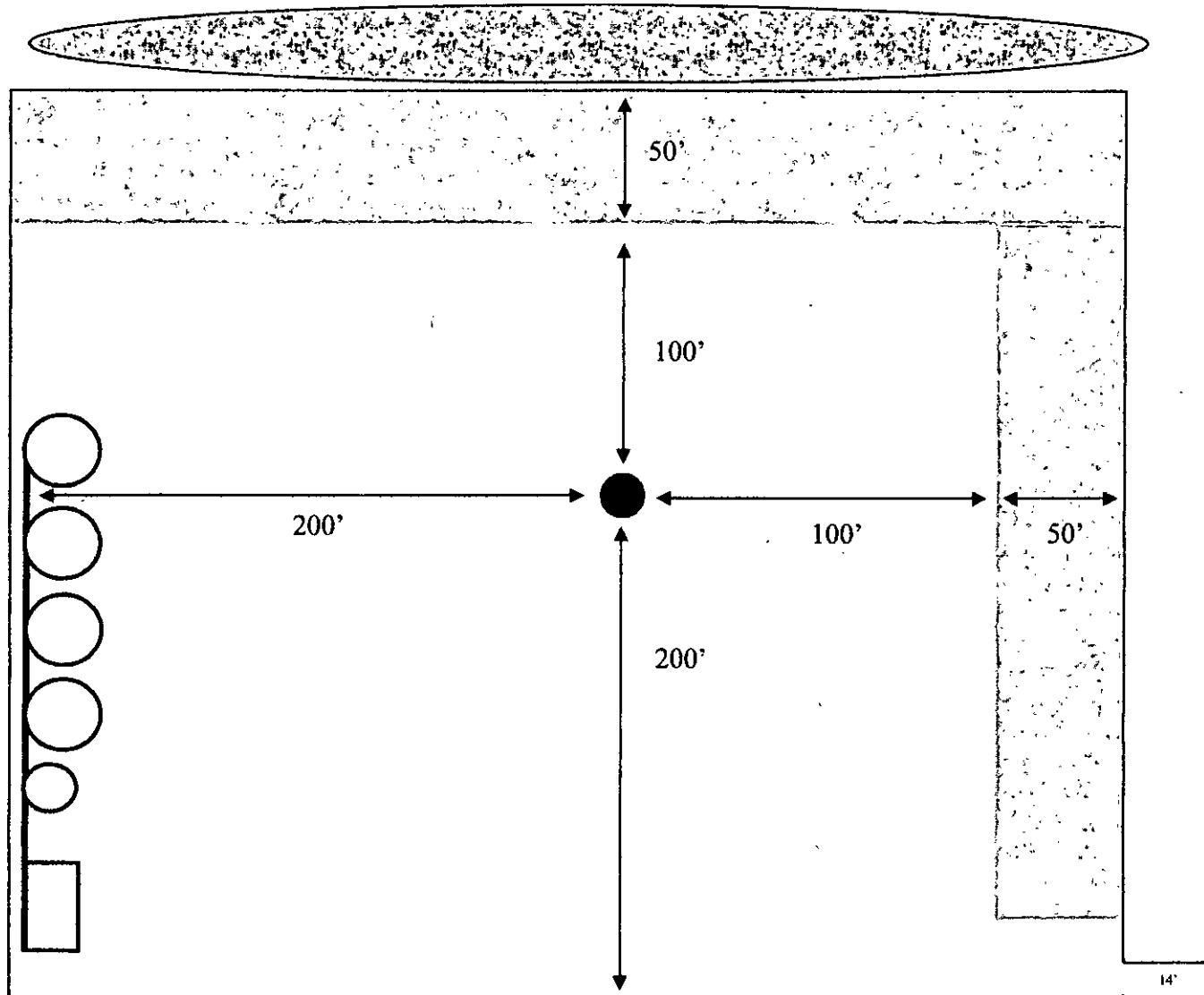
## **Mud info and H<sub>2</sub>S Operating Mud Conditions**

Though no H<sub>2</sub>S is anticipated during the drilling operation, this contingency plan will provide for methods to ensure the well is kept under control in the event an H<sub>2</sub>S reading of 100 ppm or more are encountered. Once personnel are safe and the proper protective gear is in place and on personnel, the operator and rig crew essential personnel will ensure the well is under control, suspend drilling operations and shut-in the well (unless pressure build up or other operational situations dictate suspending operations will prevent well control), increase the mud weight and circulate all gas from the hole utilizing the mud/gas separator downstream of the choke, the choke manifold and the emergency flare system located 150' from the well. Bring the mud system into compliance and the H<sub>2</sub>S level below 10 ppm, then notify all emergency officers that drilling ahead is practical and safe. Proceed with drilling ahead only after all provisions of Onshore Order 6, Section III.C. have been satisfied. Mud will be a fresh water/brine system with the proper H<sub>2</sub>S scavengers on location and utilized when necessary. Mud pH will also be kept at a level to minimize sulfide stress cracking and embrittlement when H<sub>2</sub>S is present in the mud system.



**EXHIBIT C**

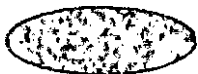
**Interim Reclamation & Production Facilities  
LONGVIEW FEDERAL 12 SWD #5  
V-DOOR EAST NORTHEAST**



**LEGEND**



Well Bore



Topsoil



Interim Reclamation



Production Facilities



Ditch and Berm



**NORTH  
NORTHEAST**

**SURFACE USE PLAN**  
**SWD WELL**  
**RKI Exploration & Production, LLC**  
**Longview Federal 12 SWD #5**  
**210' FNL & 1665' FEL**  
**Section 12, T. 23 S., R. 28 E**  
**Eddy County, New Mexico**

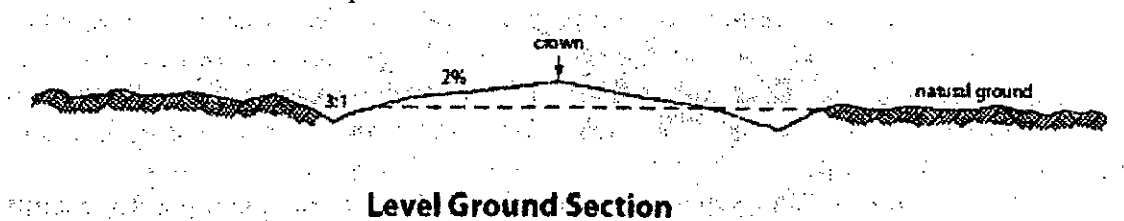
This plan is submitted with form 3160-3, Application for Permit to Drill, covering the above described well. The purpose of this plan is to describe the location of the proposed well, the proposed construction activities and operations plan, the magnitude of the surface disturbance involved and the procedures to be followed in rehabilitating the surface after completion of the operations, so that a complete appraisal can be made of the environmental effect associated with the operations.

1. **EXISTING ROADS:**

- A. **DIRECTIONS:** Go east of Carlsbad, NM, on Highway 62/180, for 1.2 miles. Turn southeast onto the County Road 605 (Refinery Road) for 11.5 miles. The beginning point of proposed access road begins at this point. All existing roads are either paved or a caliche lease road.
- B. See attached plats and maps provided by WTC Surveys.
- C. The access routes from County Road 605 to the well location is depicted on **Exhibit A**. The route highlighted in red is all within the same lease and will not require a ROW permit.
- D. Existing roads on the access route will be improved and maintained to the standard set forth in Section 2 of this Surface Use Plan of Operations.

2. **NEW OR RECONSTRUCTED ACCESS ROADS:**

- A. The new access road will begin at the southeast corner of the proposed well location and run east northeast for 30 ft. to the Old Refinery Road or County Road 605.
- B. The maximum width of the driving surface will be 14 feet. The road will be crowned and ditched with a 2% slope from the tip of the crown to the edge of the driving surface. The ditches will be 1 foot deep with 3:1 slopes. The driving surface will be made of 6" rolled and compacted caliche.



- C. Surface material will be native caliche. The average grade of the entire road will be approximately 3%.
- D. Fence Cuts: No
- E. Cattle guards: No
- F. Turnouts: No
- G. Culverts: No
- H. Cuts and Fills: Not significant
- I. Approximately 6 inches of topsoil (root zone) will be stripped from the proposed access road

prior to any further construction activity. The topsoil that was stripped will be spread along the edge of the road and within the ditch. The topsoil will be seeded with the proper seed mix designated by the BLM.

- J. The access road will be constructed and maintained as necessary to prevent soil erosion and accommodate all-weather traffic. The road will be crowned and ditched with water turnouts installed as necessary to provide for proper drainage along the access road route.
- K. The access road and associated drainage structures will be constructed and maintained in accordance with road guidelines contained in the joint BLM/USFS publication: Surface Operating Standards for Oil and Gas Exploration and Development, The Gold Book, Fourth Edition and/or BLM Manual Section 9113 concerning road construction standards on projects subject to federal jurisdiction.

### 3. LOCATION OF EXISTING WELLS:

See attached map (**Exhibit B**) showing all wells within a one-mile radius.

### 4. LOCATION OF EXISTING AND/OR PROPOSED FACILITIES:

- A. In the event the well is found productive, a production facility (Tank Battery), will be installed on the west portion of the well pad (**SEE EXHIBIT C**). A buried 12" poly SWD pipeline (500 psi) of 20' and a 12.5 kv power line (one pole) of 10' will be run to the existing utility corridor to the south (adjacent to corridor at southwest corner) **SEE EXHIBIT E**.
- B. All permanent (on site six months or longer) aboveground structures constructed or installed on location and not subject to safety requirements will be painted to BLM specifications.
- C. Containment berms will be constructed completely around production facilities designed to hold fluids. The containment berms will be constructed or compacted subsoil, be sufficiently impervious, hold 1 ½ times the capacity of the largest tank and away from cut or fill areas.

### 5. LOCATION AND TYPE OF WATER SUPPLY:

The well will be drilled using a combination of water mud systems as outlined in the Drilling Program. The water will be obtained from commercial water stations in the area and hauled to the location by transport truck using the existing and proposed roads shown in the attached survey plats. If a commercial water well is nearby, a temporary, surface poly line, will be laid along existing roads or other ROW easements and the water pumped to the well. No water well will be drilled on the location.

### 6. SOURCE OF CONSTRUCTION MATERIALS:

Any construction material that may be required for surfacing of the drill pad and access road will be from a contractor having a permitted source of materials within the general area. No construction materials will be removed from Federal lands without prior approval from the appropriate surface management agency. All roads will be constructed of 6" rolled and compacted caliche.

### 7. METHODS OF HANDLING WASTE DISPOSAL:

- A. The well will be drilled utilizing a closed loop mud system. Drill cuttings will be held in roll-off style mud boxes and taken to an NMOCD approved disposal site.
- B. Drilling fluids will be contained in steel mud pits.

- C. Water produced from the well during completion will be held temporarily in steel tanks and then taken to an NMOCD approved commercial disposal facility.
- D. Oil produced during operations will be stored in tanks until sold.
- E. Portable, self-contained chemical toilets will be provided for human waste disposal. Upon completion of operations, or as required, the toilet holding tanks will be pumped and the contents thereof disposed of in an approved sewage disposal facility. All state and local laws and regulations pertaining to disposal of human and solid waste will be complied with. This equipment will be properly maintained during the drilling and completion operations and will be removed when all operations are complete.
- F. All trash, junk, and other waste materials will be contained in trash cages or bins to prevent scattering and will be removed and deposited in an approved sanitary landfill. Immediately after drilling all debris and other waste materials on and around the well location, not contained in the trash cage will be cleaned up and removed from the location. No potentially adverse materials or substances will be left on the location.

8. ANCILLARY FACILITIES:

No campsite, airstrip, or other facilities will be built as a result of the operation of this well. No staging areas are needed.

9. WELL SITE LAYOUT:

- A. **Exhibit D** shows the dimensions of the proposed well pad.
- B. The proposed pad size will be 350' x 350' (**See Exhibit D**). There will be no reserve pit due to the well being drilled utilizing a closed loop mud system. The closed loop system will meet the NMOCD requirements 19.15.17.
- C. The WTC Surveyor's plat, Site Location Plat, and **Exhibit D**, shows how the well will be turned to a V-Door East Northeast.
- D. A 600' x 600' area has been staked and flagged.
- E. All equipment and vehicles will be confined to the approved disturbed areas of this APD (i.e., access road, well pad, and topsoil storage areas)

10. PLANS FOR SURFACE RECLAMATION:

- A. After concluding the drilling and/or completion operations, if the well is found non-commercial, all the equipment will be removed, the surface material, caliche, will be removed from the well pad and road and transported to the original caliche pit or used for other roads. The original stock piled top soil will be returned to the pad and contoured, as close as possible, to the original topography. The access road will have the caliche removed and the road ripped, barricaded and seeded as directed by the BLM.
- B. If the well is a producer, the portions of the location not essential to production facilities or space required for workover operations, will be reclaimed and seeded as per BLM requirements. (**SEE EXHIBIT C FOR INTERIM RECLAMATION PLAT FOR THIS WELL**)
- C. Reclamation Performance Standards  
The following reclamation performance standards will be met:

*Interim Reclamation* – Includes disturbed areas that may be redisturbed during operations and will be redisturbed at final reclamation to achieve restoration of the original landform and a natural vegetative community.

- Disturbed areas not needed for active, long-term production operations or vehicle travel will be recontoured, protected from erosion, and revegetated with a self-sustaining, vigorous, diverse, native (or as

otherwise approved) plant community sufficient to minimize visual impacts, provide forage, stabilize soils, and impede the invasion of noxious, invasive, and non-native weeds.

*Final Reclamation* – Includes disturbed areas where the original landform and a natural vegetative community will be restored and it is anticipated the site will not be redisturbed for future development.

- The original landform will be restored for all disturbed areas including well pads, production facilities, roads, pipelines, and utility corridors.
- A self-sustaining, vigorous, diverse, native (or otherwise approved) plant community will be established on the site, with a density sufficient to control erosion and invasion by non-native plants and to re-establish wildlife habitat or forage production. At a minimum, the established plant community will consist of species included in the seed mix and/or desirable species occurring in the surrounding natural vegetation.
- Erosion features are equal to or less than surrounding area and erosion control is sufficient so that water naturally infiltrates into the soil and gulying, headcutting, slumping, and deep or excessive rills (greater than 3 inches) are not observed.
- The site will be free of State- or county-listed noxious weeds, oil field debris and equipment, and contaminated soil. Invasive and non-native weeds are controlled.

#### D. Reclamation Actions

Earthwork for interim and final reclamation will be completed within 6 months of well completion or plugging unless a delay is approved in writing by the BLM authorized officer.

The following minimum reclamation actions will be taken to ensure that the reclamation objectives and standards are met. It may be necessary to take additional reclamation actions beyond the minimum in order to achieve the Reclamation Standards.

##### Reclamation – General

###### Notification:

- The BLM will be notified at least 3 days prior to commencement of any reclamation operations.

###### Housekeeping:

- Within 30 days of well completion, the well location and surrounding areas(s) will be cleared of, and maintained free of, all debris, materials, trash, and equipment not required for production.
- No hazardous substances, trash, or litter will be buried or placed in pits.

###### Topsoil Management:

- Operations will disturb the minimum amount of surface area necessary to conduct safe and efficient operations.
- Topsoil depth is defined as the top layer of soil that contains 80% of the roots. In areas to be heavily disturbed, the topsoil will be stripped and stockpiled around the perimeter of the well location and along the perimeter of the access road to control run-on and run-off, to keep topsoil viable, and to make

redistribution of topsoil more efficient during interim reclamation. Stockpiled topsoil will include vegetative material. Topsoil will be clearly segregated and stored separately from subsoils.

- Salvaging and spreading topsoil will not be performed when the ground or topsoil is frozen or too wet to adequately support construction equipment or so dry that dust clouds greater than 30 feet tall are created. If such equipment creates ruts in excess of four (4) inches deep, the soil will be deemed too wet.
- No major depressions will be left that would trap water and cause ponding unless the intended purpose is to trap runoff and sediment.

Seeding:

- Seedbed Preparation. Initial seedbed preparation will consist of recontouring to the appropriate interim or final reclamation standard. All compacted areas to be seeded will be ripped to a minimum depth of 18 inches with a minimum furrow spacing of 2 feet, followed by recontouring the surface and then evenly spreading the stockpiled topsoil. Prior to seeding, the seedbed will be scarified to a depth of no less than 4 – 6 inches. If the site is to be broadcast seeded, the surface will be left rough enough to trap seed and snow, control erosion, and increase water infiltration.
- If broadcast seeding is to be used and is delayed, final seedbed preparation will consist of contour cultivating to a depth of 4 to 6 inches within 24 hours prior to seeding, dozer tracking, or other imprinting in order to break the soil crust and create seed germination micro-sites.
- Seed Application. Seeding will be conducted no more than two weeks following completion of final seedbed preparation. A certified weed-free seed mix designed by the BLM to meet reclamation standards will be used.
- If the site is harrowed or dragged, seed will be covered by no more than 0.25 inch of soil.

11. SURFACE OWNERSHIP:

- A. The surface is owned by the U. S. Government and is administered by the Bureau of Land Management. The surface is multiple use with the primary uses of the region for the grazing of livestock and the production of oil and gas.

12. OTHER INFORMATION:

- A. The area surrounding the well site is in a gentle sloped, shallow gravelly loam, rolling hills type area. The vegetation consists of Mesquite, Creosote, Whitethorn Acacia with three-awns and some dropseed species.
- B. There is no permanent or live water in the immediate area.
- C. There are no dwellings within 2 miles of this location.
- D. Sections 1 & 12 of T. 23 S., R. 28 E. has had an archaeological block survey done and a report filed with the BLM Carlsbad Field Office.

13. BOND COVERAGE:

Bond Coverage is Nationwide; Bond Number NMB-000460.

**OPERATORS REPRESENTATIVE:**

The RKI Exploration and Production, LLC representatives responsible for ensuring compliance of the surface use plan are listed below:

**Surface:**

Barry W. Hunt – Permitting Agent  
1403 Springs Farm Place  
Carlsbad, NM 88220  
(575) 885-1417 (Home)  
(575) 361-4078 (Cell)

**Drilling & Production:**

Ken Fairchild – RKI Exploration and Production, LLC.  
210 Park Avenue, Suite 900  
Oklahoma City, Ok. 73102  
(405) 996-5764 (Office)  
(469) 693-6051 (Cell)

**ON-SITE PERFORMED ON 01/02/13 RESULTED IN PROPOSED LOCATION BEING MOVED WEST, ACROSS THE COUNTY ROAD, DUE TO PIPELINES, EXISTING WELLS, AND TOPOGRAPHICAL REASONS. IT WAS AGREED TO TURN THE LOCATION TO A V-DOOR EAST NORTHEAST, PLACE THE TOP SOIL TO THE NORTH, TANK BATTERY TO THE WEST AND INTERIM RECLAMATION TO BE ON THE NORTH AND EAST PORTIONS OF THE PAD.**

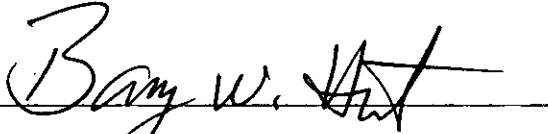
**PRESENT AT ON-SITE:**

**BARRY HUNT – PERMIT AGENT FOR RKI EXPLORATION & PRODUCTION  
AMANDA LYNCH – BLM  
BECKIE HILL - BOONE ARCHAEOLOGICAL SERVICES  
WTC SURVEYS**

## CERTIFICATION

I hereby certify that I, or persons under my direct supervision, have inspected the proposed drill site and access road proposed herein; that I am familiar with the conditions that presently exist; that I have full knowledge of State and Federal laws applicable to this operation; that the statements made in this APD package are, to the best of my knowledge, true and correct, and that the work associated with the operations proposed herein will be performed in conformity with this APD package and the terms and conditions under which it is approved. I also certify that I, or RKI Exploration and Production, LLC am responsible for the operations conducted under this application. These statements are subject to the provisions of 18 U. S. C. 1001 for the filing of false statements. Executed this 26th day of November 2014.

Signed: \_\_\_\_\_

A handwritten signature in black ink, appearing to read "Barry W. Hunt", written over a horizontal line.

Printed Name: Barry Hunt

Position: Agent for RKI Exploration & Production, LLC.

Address: 1403 Springs Farm Place, Carlsbad, NM 88220

Telephone: (575) 361-4078

E-mail: specialtpermitting@gmail.com

## PECOS DISTRICT CONDITIONS OF APPROVAL

OPERATOR'S NAME:	RKI Explor & Prod
LEASE NO.:	NM91078
WELL NAME & NO.:	5-Longview Federal 12 SWD
SURFACE HOLE FOOTAGE:	210'/N & 1665'/E
LOCATION:	Section 12, T.23 S., R.28 E., NMPM
COUNTY:	Eddy County, New Mexico

### TABLE OF CONTENTS

Standard Conditions of Approval (COA) apply to this APD. If any deviations to these standards exist or special COAs are required, the section with the deviation or requirement will be checked below.

- ☐ **General Provisions**
- ☐ **Permit Expiration**
- ☐ **Archaeology, Paleontology, and Historical Sites**
- ☐ **Noxious Weeds**
- ☒ **Special Requirements**
  - Cave/Karst
- ☐ **Construction**
  - Notification
  - Topsoil
  - Closed Loop System
  - Federal Mineral Material Pits
  - Well Pads
  - Roads
- ☐ **Road Section Diagram**
- ☒ **Drilling**
  - H2S Requirements
  - Cement Requirements
  - Logging Requirements
  - Waste Material and Fluids
- ☐ **Production (Post Drilling)**
  - Well Structures & Facilities
  - Pipelines
  - Electric Lines
- ☐ **Interim Reclamation**
- ☐ **Final Abandonment & Reclamation**

## **I. GENERAL PROVISIONS**

The approval of the Application For Permit To Drill (APD) is in compliance with all applicable laws and regulations: 43 Code of Federal Regulations 3160, the lease terms, Onshore Oil and Gas Orders, Notices To Lessees, New Mexico Oil Conservation Division (NMOCD) Rules, National Historical Preservation Act As Amended, and instructions and orders of the Authorized Officer. Any request for a variance shall be submitted to the Authorized Officer on Form 3160-5, Sundry Notices and Report on Wells.

## **II. PERMIT EXPIRATION**

If the permit terminates prior to drilling and drilling cannot be commenced within 60 days after expiration, an operator is required to submit Form 3160-5, Sundry Notices and Reports on Wells, requesting surface reclamation requirements for any surface disturbance. However, if the operator will be able to initiate drilling within 60 days after the expiration of the permit, the operator must have set the conductor pipe in order to allow for an extension of 60 days beyond the expiration date of the APD. (Filing of a Sundry Notice is required for this 60 day extension.)

## **III. ARCHAEOLOGICAL, PALEONTOLOGY & HISTORICAL SITES**

Any cultural and/or paleontological resource discovered by the operator or by any person working on the operator's behalf shall immediately report such findings to the Authorized Officer. The operator is fully accountable for the actions of their contractors and subcontractors. The operator shall suspend all operations in the immediate area of such discovery until written authorization to proceed is issued by the Authorized Officer. An evaluation of the discovery shall be made by the Authorized Officer to determine the appropriate actions that shall be required to prevent the loss of significant cultural or scientific values of the discovery. The operator shall be held responsible for the cost of the proper mitigation measures that the Authorized Officer assesses after consultation with the operator on the evaluation and decisions of the discovery. Any unauthorized collection or disturbance of cultural or paleontological resources may result in a shutdown order by the Authorized Officer.

## **IV. NOXIOUS WEEDS**

The operator shall be held responsible if noxious weeds become established within the areas of operations. Weed control shall be required on the disturbed land where noxious weeds exist, which includes the roads, pads, associated pipeline corridor, and adjacent land affected by the establishment of weeds due to this action. The operator shall consult with the Authorized Officer for acceptable weed control methods, which include following EPA and BLM requirements and policies.

## **V. SPECIAL REQUIREMENT(S)**

### **Cave/Karst Surface Mitigation**

The following stipulations will be applied to minimize impacts during construction, drilling and production.

#### **Construction:**

In the advent that any underground voids are opened up during construction activities, construction activities will be halted and the BLM will be notified immediately.

#### **No Blasting:**

No blasting will be utilized for pad construction. The pad will be constructed and leveled by adding the necessary fill and caliche.

#### **Pad Berming:**

The entire perimeter of the well pad will be bermed to prevent oil, salt, and other chemical contaminants from leaving the well pad.

- The compacted berm shall be constructed at a minimum of 12 inches high with impermeable mineral material (e.g. caliche).
- No water flow from the uphill side(s) of the pad shall be allowed to enter the well pad.
- The topsoil stockpile shall be located outside the bermed well pad.
- Topsoil, either from the well pad or surrounding area, shall not be used to construct the berm.
- No storm drains, tubing or openings shall be placed in the berm.
- If fluid collects within the bermed area, the fluid must be vacuumed into a safe container and disposed of properly at a state approved facility.
- The integrity of the berm shall be maintained around the surfaced pad throughout the life of the well and around the downsized pad after interim reclamation has been completed.
- Any access road entering the well pad shall be constructed so that the integrity of the berm height surrounding the well pad is not compromised. (Any access road crossing the berm cannot be lower than the berm height.)

#### **Tank Battery Liners and Berms:**

Tank battery locations and all facilities will be lined and bermed. A 20 mil permanent liner will be installed with a 4 oz. felt backing to prevent tears or punctures. Tank battery berms must be large enough to contain 1 ½ times the content of the largest tank.

#### **Leak Detection System:**

A method of detecting leaks is required. The method could incorporate gauges to measure loss, siting valves and lines so they can be visually inspected, or installing

electronic sensors to alarm when a leak is present. Leak detection plan will be submitted to BLM for approval.

**Automatic Shut-off Systems:**

Automatic shut off, check valves, or similar systems will be installed for pipelines and tanks to minimize the effects of catastrophic line failures used in production or drilling.

**Cave/Karst Subsurface Mitigation**

The following stipulations will be applied to protect cave/karst and ground water concerns:

**Rotary Drilling with Fresh Water:**

Fresh water will be used as a circulating medium in zones where caves or karst features are expected. SEE ALSO: Drilling COAs for this well.

**Directional Drilling:**

Kick off for directional drilling will occur at least 100 feet below the bottom of the cave occurrence zone. SEE ALSO: Drilling COAs for this well.

**Lost Circulation:**

ALL lost circulation zones from the surface to the base of the cave occurrence zone will be logged and reported in the drilling report.

Regardless of the type of drilling machinery used, if a void of four feet or more and circulation losses greater than 70 percent occur simultaneously while drilling in any cave-bearing zone, the BLM will be notified immediately by the operator. The BLM will assess the situation and work with the operator on corrective actions to resolve the problem.

**Abandonment Cementing:**

Upon well abandonment in high cave karst areas additional plugging conditions of approval may be required. The BLM will assess the situation and work with the operator to ensure proper plugging of the wellbore.

**Pressure Testing:**

Annual pressure monitoring will be performed by the operator on all casing annuli and reported in a sundry notice. If the test results indicated a casing failure has occurred, remedial action will be undertaken to correct the problem to the BLM's approval.

## **VI. CONSTRUCTION**

### **A. NOTIFICATION**

The BLM shall administer compliance and monitor construction of the access road and well pad. Notify the Carlsbad Field Office at (575) 234-5909 at least 3 working days prior to commencing construction of the access road and/or well pad.

When construction operations are being conducted on this well, the operator shall have the approved APD and Conditions of Approval (COA) on the well site and they shall be made available upon request by the Authorized Officer.

### **B. TOPSOIL**

The operator shall strip the top portion of the soil (root zone) from the entire well pad area and stockpile the topsoil along the edge of the well pad as depicted in the APD. The root zone is typically six (6) inches in depth. All the stockpiled topsoil will be redistributed over the interim reclamation areas. Topsoil shall not be used for berming the pad or facilities. For final reclamation, the topsoil shall be spread over the entire pad area for seeding preparation.

Other subsoil (below six inches) stockpiles must be completely segregated from the topsoil stockpile. Large rocks or subsoil clods (not evident in the surrounding terrain) must be buried within the approved area for interim and final reclamation.

### **C. CLOSED LOOP SYSTEM**

Tanks are required for drilling operations: No Pits.

The operator shall properly dispose of drilling contents at an authorized disposal site.

### **D. FEDERAL MINERAL MATERIALS PIT**

Payment shall be made to the BLM prior to removal of any federal mineral materials. Call the Carlsbad Field Office at (575) 234-5972.

### **E. WELL PAD SURFACING**

Surfacing of the well pad is not required.

If the operator elects to surface the well pad, the surfacing material may be required to be removed at the time of reclamation. The well pad shall be constructed in a manner which creates the smallest possible surface disturbance, consistent with safety and operational needs.

### **F. EXCLOSURE FENCING (CELLARS & PITS)**

**Exclosure Fencing**

The operator will install and maintain exclosure fencing for all open well cellars to prevent access to public, livestock, and large forms of wildlife before and after drilling operations until the pit is free of fluids and the operator initiates backfilling. (For examples of exclosure fencing design, refer to BLM's Oil and Gas Gold Book, Exclosure Fence Illustrations, Figure 1, Page 18.)

**G. ON LEASE ACCESS ROADS****Road Width**

The access road shall have a driving surface that creates the smallest possible surface disturbance and does not exceed fourteen (14) feet in width. The maximum width of surface disturbance, when constructing the access road, shall not exceed twenty-five (25) feet.

**Surfacing**

Surfacing material is not required on the new access road driving surface. If the operator elects to surface the new access road or pad, the surfacing material may be required to be removed at the time of reclamation.

Where possible, no improvements should be made on the unsurfaced access road other than to remove vegetation as necessary, road irregularities, safety issues, or to fill low areas that may sustain standing water.

The Authorized Officer reserves the right to require surfacing of any portion of the access road at any time deemed necessary. Surfacing may be required in the event the road deteriorates, erodes, road traffic increases, or it is determined to be beneficial for future field development. The surfacing depth and type of material will be determined at the time of notification.

**Crowning**

Crowning shall be done on the access road driving surface. The road crown shall have a grade of approximately 2% (i.e., a 1" crown on a 14' wide road). The road shall conform to Figure 1; cross section and plans for typical road construction.

**Ditching**

Ditching shall be required on both sides of the road.

**Turnouts**

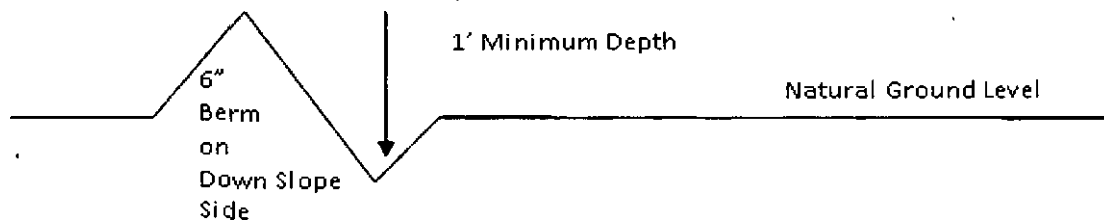
Vehicle turnouts shall be constructed on the road. Turnouts shall be intervisible with interval spacing distance less than 1000 feet. Turnouts shall conform to Figure 1; cross section and plans for typical road construction.

**Drainage**

Drainage control systems shall be constructed on the entire length of road (e.g. ditches, sidehill outslowing and insloping, lead-off ditches, culvert installation, and low water crossings).

A typical lead-off ditch has a minimum depth of 1 foot below and a berm of 6 inches above natural ground level. The berm shall be on the down-slope side of the lead-off ditch.

#### **Cross Section of a Typical Lead-off Ditch**



All lead-off ditches shall be graded to drain water with a 1 percent minimum to 3 percent maximum ditch slope. The spacing interval are variable for lead-off ditches and shall be determined according to the formula for spacing intervals of lead-off ditches, but may be amended depending upon existing soil types and centerline road slope (in %);

#### **Formula for Spacing Interval of Lead-off Ditches**

Example - On a 4% road slope that is 400 feet long, the water flow shall drain water into a lead-off ditch. Spacing interval shall be determined by the following formula:

$$400 \text{ foot road with } 4\% \text{ road slope: } \frac{400'}{4\%} + 100' = 200' \text{ lead-off ditch interval}$$

#### **Cattleguards**

An appropriately sized cattleguard sufficient to carry out the project shall be installed and maintained at fence/road crossings. Any existing cattleguards on the access road route shall be repaired or replaced if they are damaged or have deteriorated beyond practical use. The operator shall be responsible for the condition of the existing cattleguards that are in place and are utilized during lease operations.

#### **Fence Requirement**

Where entry is granted across a fence line; the fence shall be braced and tied off on both sides of the passageway prior to cutting. The operator shall notify the private surface landowner or the grazing allotment holder prior to crossing any fences.

#### **Public Access**

Public access on this road shall not be restricted by the operator without specific written approval granted by the Authorized Officer.

### Construction Steps

1. Salvage topsoil
2. Construct road

3. Redistribute topsoil
4. Revegetate slopes

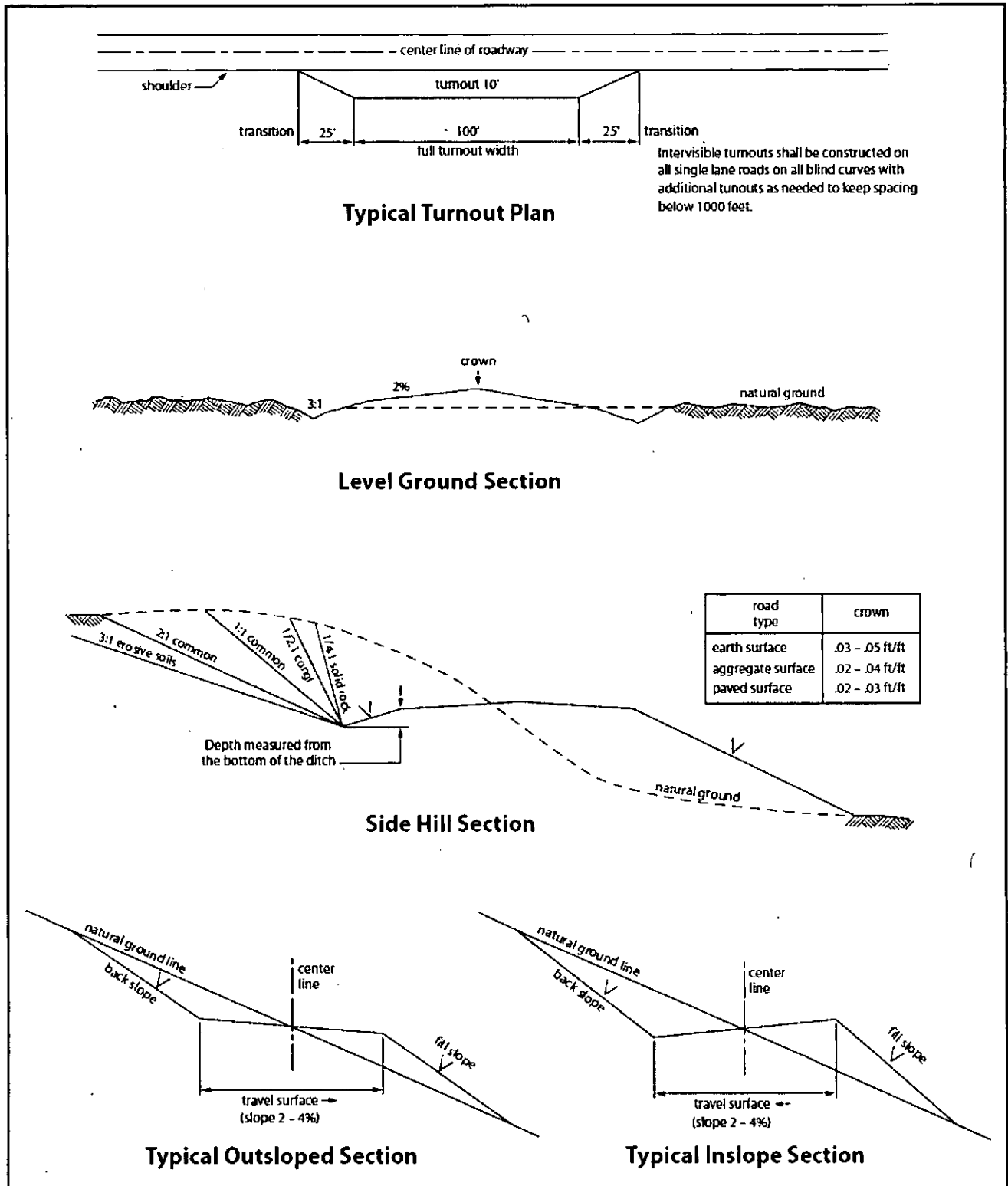


Figure 1. Cross-sections and plans for typical road sections representative of BLM resource or FS local and higher-class roads.

## VII. DRILLING

### A. DRILLING OPERATIONS REQUIREMENTS

The BLM is to be notified in advance for a representative to witness:

- a. Spudding well (minimum of 24 hours)
- b. Setting and/or Cementing of all casing strings (minimum of 4 hours)
- c. BOPE tests (minimum of 4 hours)

☒ **Eddy County**

Call the Carlsbad Field Office, 620 East Greene St., Carlsbad, NM 88220,  
(575) 361-2822

1. **Although there are no measured amounts of Hydrogen Sulfide reported, it is always a potential hazard. Operator has stated there will be H<sub>2</sub>S detection equipment on site, as well as the compliance with provisions of Onshore Order No. 6 if encountered. If Hydrogen Sulfide is encountered, the operator must provide measured values and formations to the BLM.**
2. Unless the production casing has been run and cemented or the well has been properly plugged, the drilling rig shall not be removed from over the hole without prior approval. **If the drilling rig is removed without approval – an Incident of Non-Compliance will be written and will be a “Major” violation.**
3. Floor controls are required for 3M or Greater systems. These controls will be on the rig floor, unobstructed, readily accessible to the driller and will be operational at all times during drilling and/or completion activities. Rig floor is defined as the area immediately around the rotary table; the area immediately above the substructure on which the draw works is located, this does not include the dog house or stairway area.
4. **The record of the drilling rate along with the GR/N well log run from TD to surface (horizontal well – vertical portion of hole) shall be submitted to the BLM office as well as all other logs run on the borehole 30 days from completion. If available, a digital copy of the logs is to be submitted in addition to the paper copies. The Rustler top and top and bottom of Salt are to be recorded on the Completion Report.**

## **B. CASING**

**Changes to the approved APD casing program need prior approval if the items substituted are of lesser grade or different casing size or are Non-API. The Operator can exchange the components of the proposal with that of superior strength (i.e. changing from J-55 to N-80, or from 36# to 40#). Changes to the approved cement program need prior approval if the altered cement plan has less volume or strength or if the changes are substantial (i.e. Multistage tool, ECP, etc.). The initial wellhead installed on the well will remain on the well with spools used as needed.**

**Centralizers required on surface casing per Onshore Order 2.III.B.1.f.**

### **Wait on cement (WOC) for Water Basin:**

**After cementing but before commencing any tests, the casing string shall stand cemented under pressure until both of the following conditions have been met: 1) cement reaches a minimum compressive strength of 500 psi at the shoe, 2) until cement has been in place at least 8 hours. WOC time will be recorded in the driller's log. See individual casing strings for details regarding lead cement slurry requirements.**

**Provide compressive strengths including hours to reach required 500 pounds compressive strength prior to cementing each casing string. Have well specific cement details onsite prior to pumping the cement for each casing string.**

**No pea gravel permitted for remedial or fall back remedial without prior authorization from the BLM engineer.**

**Medium Cave/Karst occurrence.**

**Possible water flows in the Castile and in the Salado.**

**Possible lost circulation in the Rustler, in the Red Beds and in the Delaware.**

**Abnormal pressure may be encountered in the Wolfcamp.**

- 1. The 20 inch surface casing shall be set at approximately 200 feet (in a competent formation, and if salt is encountered, set casing at least 25 feet above the salt) and cemented to the surface.**
  - a. If cement does not circulate to the surface, the appropriate BLM office shall be notified and a temperature survey utilizing an electronic type temperature survey with surface log readout will be used or a cement bond log shall be run to verify the top of the cement. Temperature survey will be run a minimum of six hours after pumping cement and ideally between 8-10 hours after completing the cement job.**
  - b. Wait on cement (WOC) time for a primary cement job is to include the lead cement slurry.**

- c. Wait on cement (WOC) time for a remedial job will be a minimum of 4 hours after bringing cement to surface or 500 pounds compressive strength, whichever is greater.
  - d. If cement falls back, remedial cementing will be done prior to drilling out that string.
2. The minimum required fill of cement behind the 13-3/8 inch intermediate is:  
(Casing shall be set at approximately 2700 feet)

☒ Cement to surface. If cement does not circulate see B.1.a, c-d above.

**Formation below the 13-3/8 inch shoe to be tested according to Onshore Order 2.III.B.1.i. Test to be done as a mud equivalency test using the mud weight necessary for the pore pressure of the formation below the shoe (not the mud weight required to prevent dissolving the salt formation) and the mud weight for the bottom of the hole. Report results to BLM office.**

3. The minimum required fill of cement behind the 9-5/8 inch intermediate is:

**DV tool at 5500'. Operator is to submit sundry if DV tool depth varies by more than 100' from approved depth.**

- a. First stage to DV tool:

☒ Cement to circulate. If cement does not circulate, contact the appropriate BLM office before proceeding with second stage cement job. Operator should have plans as to how they will achieve circulation on the next stage.

- b. Second stage above DV tool:

☒ Cement should tie-back at least 200 feet into previous casing string. Operator shall provide method of verification.

**Formation below the 9-5/8 inch shoe to be tested according to Onshore Order 2.III.B.1.i. Test to be done as a mud equivalency test using the mud weight necessary for the pore pressure of the formation below the shoe (not the mud weight required to prevent dissolving the salt formation) and the mud weight for the bottom of the hole. Report results to BLM office.**

4. The minimum required fill of cement behind the 7 inch production liner is:

☒ Cement should tie-back to the top of the liner. Operator shall provide method of verification. Approved for a minimum of 150' liner overlap.

5. If hardband drill pipe is rotated inside casing, returns will be monitored for metal. If metal is found in samples, drill pipe will be pulled and rubber protectors which have a larger diameter than the tool joints of the drill pipe will be installed prior to continuing drilling operations.

### **C. PRESSURE CONTROL**

1. All blowout preventer (BOP) and related equipment (BOPE) shall comply with well control requirements as described in Onshore Oil and Gas Order No. 2 and API RP 53 Sec. 17.
1. **A variance is granted for the use of a diverter on the 20" surface casing.**
2. **Operator has proposed a multi-bowl wellhead assembly that has a weld on head with no o-ring seals. This assembly will only be tested when installed on the surface casing. Minimum working pressure of the blowout preventer (BOP) and related equipment (BOPE) required for drilling below the surface casing shoe shall be 10,000 (10M) psi. 10M system requires an HCR valve, remote kill line and annular to match. The remote kill line is to be installed prior to testing the system and tested to stack pressure.**
  - a. **Wellhead manufacturer is supplying the test plug/retrieval tool for the operator's third party tester to use during the BOP/BOPE test. Operator shall use the supplied test plug/retrieval tool.**
  - b. **Operator shall install the wear bushing required by the wellhead manufacturer. This wear bushing shall be installed by using the test plug/retrieval tool.**
  - c. **Wellhead manufacturer representative shall be on location when the intermediate casing mandrel is landed. Operator shall submit copy of manufacturer's wellsite report with subsequent report.**
  - d. **Operator shall perform the intermediate casing integrity test to 70% of the casing burst. This will test the multi-bowl seals.**
  - e. **If the cement does not circulate and one inch operations would have been possible with a standard wellhead, the well head shall be cut off, cementing operations performed and another wellhead installed.**
3. The appropriate BLM office shall be notified a minimum of 4 hours in advance for a representative to witness the tests.
  - a. In a water basin, for all casing strings utilizing slips, these are to be set as soon as the crew and rig are ready and any fallback cement remediation has been done. The casing cut-off and BOP installation can be initiated four hours after installing the slips, which will be approximately six hours after bumping the plug. For those casing strings not using slips, the minimum wait time before

cut-off is eight hours after bumping the plug. BOP/BOPE testing can begin after cut-off or once cement reaches 500 psi compressive strength (including lead when specified), whichever is greater. However, if the float does not hold, cut-off cannot be initiated until cement reaches 500 psi compressive strength (including lead when specified).

- a. The tests shall be done by an independent service company utilizing a test plug **not a cup or J-packer**.
- b. The test shall be run on a 5000 psi chart for a 2-3M BOP/BOP, on a 10000 psi chart for a 5M BOP/BOPE and on a 15000 psi chart for a 10M BOP/BOPE. If a linear chart is used, it shall be a one hour chart. A circular chart shall have a maximum 2 hour clock. If a twelve hour or twenty-four hour chart is used, tester shall make a notation that it is run with a two hour clock.
- c. The results of the test shall be reported to the appropriate BLM office.
- d. All tests are required to be recorded on a calibrated test chart. **A copy of the BOP/BOPE test chart and a copy of independent service company test will be submitted to the appropriate BLM office.**
- e. The BOP/BOPE test shall include a low pressure test from 250 to 300 psi. The test will be held for a minimum of 10 minutes if test is done with a test plug and 30 minutes without a test plug. This test shall be performed prior to the test at full stack pressure.
- f. BOP/BOPE must be tested by an independent service company within 500 feet of the top of the **Wolfcamp** formation if the time between the setting of the intermediate casing and reaching this depth exceeds 20 days. This test does not exclude the test prior to drilling out the casing shoe as per Onshore Order No. 2.

#### **A. DRILLING MUD**

Mud system monitoring equipment, with derrick floor indicators and visual and audio alarms, shall be operating before drilling into the **Wolfcamp** formation, and shall be used until production casing is run and cemented.

#### **B. WELL COMPLETION**

**A NOI sundry with the completion procedure for this well shall be submitted and approved prior to commencing completion work. The procedure will be reviewed to verify that the completion proposal will allow the operator to:**

1. Properly evaluate the injection zone utilizing open hole logs, swab testing and/or any other method to confirm that hydrocarbons cannot be produced in paying quantities. This evaluation shall be reviewed by the BLM prior to injection commencing.
2. Restrict the injection fluid to the approved formation.

If off-lease water will be disposed in this well, the operator shall provide proof of right-of-way approval.

#### **C. DRILL STEM TEST**

If drill stem tests are performed, Onshore Order 2.III.D shall be followed.

#### **D. WASTE MATERIAL AND FLUIDS**

All waste (i.e. drilling fluids, trash, salts, chemicals, sewage, gray water, etc.) created as a result of drilling operations and completion operations shall be safely contained and disposed of properly at a waste disposal facility. No waste material or fluid shall be disposed of on the well location or surrounding area.

Porto-johns and trash containers will be on-location during fracturing operations or any other crew-intensive operations.

**CRW 082615**

## **IX. PRODUCTION (POST DRILLING)**

### **A. WELL STRUCTURES & FACILITIES**

#### **Placement of Production Facilities**

Production facilities should be placed on the well pad to allow for maximum interim recontouring and revegetation of the well location.

#### **Exclosure Netting (Open-top Tanks)**

Immediately following active drilling or completion operations, the operator will take actions necessary to prevent wildlife and livestock access, including avian wildlife, to all open-topped tanks that contain or have the potential to contain salinity sufficient to cause harm to wildlife or livestock, hydrocarbons, or Resource Conservation and Recovery Act of 1976-exempt hazardous substances. At a minimum, the operator will net, screen, or cover open-topped tanks to exclude wildlife and livestock and prevent mortality. If the operator uses netting, the operator will cover and secure the open portion of the tank to prevent wildlife entry. The operator will net, screen, or cover the tanks until the operator removes the tanks from the location or the tanks no longer contain substances that could be harmful to wildlife or livestock. Use a maximum netting mesh size of 1 ½ inches. The netting must not be in contact with fluids and must not have holes or gaps.

#### **Chemical and Fuel Secondary Containment and Exclosure Screening**

The operator will prevent all hazardous, poisonous, flammable, and toxic substances from coming into contact with soil and water. At a minimum, the operator will install and maintain an impervious secondary containment system for any tank or barrel containing hazardous, poisonous, flammable, or toxic substances sufficient to contain the contents of the tank or barrel and any drips, leaks, and anticipated precipitation. The operator will dispose of fluids within the containment system that do not meet applicable state or U. S. Environmental Protection Agency livestock water standards in accordance with state law; the operator must not drain the fluids to the soil or ground. The operator will design, construct, and maintain all secondary containment systems to prevent wildlife and livestock exposure to harmful substances. At a minimum, the operator will install effective wildlife and livestock exclosure systems such as fencing, netting, expanded metal mesh, lids, and grate covers. Use a maximum netting mesh size of 1 ½ inches.

#### **Open-Vent Exhaust Stack Exclosures**

The operator will construct, modify, equip, and maintain all open-vent exhaust stacks on production equipment to prevent birds and bats from entering, and to discourage perching, roosting, and nesting. (*Recommended exclosure structures on open-vent exhaust stacks are in the shape of a cone.*) Production equipment includes, but may not be limited to, tanks, heater-treaters, separators, dehydrators, flare stacks, in-line units, and compressor mufflers.

#### **Containment Structures**

Proposed production facilities such as storage tanks and other vessels will have a secondary containment structure that is constructed to hold the capacity of 1.5 times the

largest tank, plus freeboard to account for precipitation, unless more stringent protective requirements are deemed necessary..

### **Painting Requirement**

All above-ground structures including meter housing that are not subject to safety requirements shall be painted a flat non-reflective paint color, **Shale Green** from the BLM Standard Environmental Color Chart (CC-001: June 2008).

## **B. PIPELINES**

**A copy of the application (Grant, Sundry Notice, APD) and attachments, including stipulations, survey plat and/or map, will be on location during construction. BLM personnel may request to you a copy of your permit during construction to ensure compliance with all stipulations.**

Holder agrees to comply with the following stipulations to the satisfaction of the Authorized Officer:

1. The holder shall indemnify the United States against any liability for damage to life or property arising from the occupancy or use of public lands under this grant.
2. The holder shall comply with all applicable Federal laws and regulations existing or hereafter enacted or promulgated. In any event, the holder shall comply with the Toxic Substances Control Act of 1976 as amended, 15 USC 2601 et seq. (1982) with regards to any toxic substances that are used, generated by or stored on the right-of-way or on facilities authorized under this right-of-way grant. (See 40 CFR, Part 702-799 and especially, provisions on polychlorinated biphenyls, 40 CFR 761.1-761.193.) Additionally, any release of toxic substances (leaks, spills, etc.) in excess of the reportable quantity established by 40 CFR, Part 117 shall be reported as required by the Comprehensive Environmental Response, Compensation, and Liability Act, section 102b. A copy of any report required or requested by any Federal agency or State government as a result of a reportable release or spill of any toxic substances shall be furnished to the authorized officer concurrent with the filing of the reports to the involved Federal agency or State government.
3. The holder agrees to indemnify the United States against any liability arising from the release of any hazardous substance or hazardous waste (as these terms are defined in the Comprehensive Environmental Response, Compensation and Liability Act of 1980, 42 U.S.C. 9601, et seq. or the Resource Conservation and Recovery Act, 42 U.S.C. 6901, et seq.) on the Right-of-Way (unless the release or threatened release is wholly unrelated to activity of the Right-of-Way holder's activity on the Right-of-Way), or resulting from the activity of the Right-of-Way holder on the Right-of-Way. This agreement applies without regard to whether a release is caused by the holder, its agent, or unrelated third parties.
4. The holder shall be liable for damage or injury to the United States to the extent provided by 43 CFR Sec. 2883.1-4. The holder shall be held to a standard of strict

liability for damage or injury to the United States resulting from pipe rupture, fire, or spills caused or substantially aggravated by any of the following within the right-of-way or permit area:

- a. Activities of the holder including, but not limited to construction, operation, maintenance, and termination of the facility.
- b. Activities of other parties including, but not limited to:
  - (1) Land clearing.
  - (2) Earth-disturbing and earth-moving work.
  - (3) Blasting.
  - (4) Vandalism and sabotage.
- c. Acts of God.

The maximum limitation for such strict liability damages shall not exceed one million dollars (\$1,000,000) for any one event, and any liability in excess of such amount shall be determined by the ordinary rules of negligence of the jurisdiction in which the damage or injury occurred.

This section shall not impose strict liability for damage or injury resulting primarily from an act of war or from the negligent acts or omissions of the United States.

5. If, during any phase of the construction, operation, maintenance, or termination of the pipeline, any oil, salt water, or other pollutant should be discharged from the pipeline system, impacting Federal lands, the control and total removal, disposal, and cleaning up of such oil, salt water, or other pollutant, wherever found, shall be the responsibility of the holder, regardless of fault. Upon failure of the holder to control, dispose of, or clean up such discharge on or affecting Federal lands, or to repair all damages resulting therefrom, on the Federal lands, the Authorized Officer may take such measures as he deems necessary to control and clean up the discharge and restore the area, including, where appropriate, the aquatic environment and fish and wildlife habitats, at the full expense of the holder. Such action by the Authorized Officer shall not relieve the holder of any responsibility as provided herein.

6. All construction and maintenance activity will be confined to the authorized right-of-way width of 30 feet. If the pipeline route follows an existing road or buried pipeline right-of-way, the surface pipeline must be installed no farther than 10 feet from the edge of the road or buried pipeline right-of-way. If existing surface pipelines prevent this distance, the proposed surface pipeline must be installed immediately adjacent to the outer surface pipeline. All construction and maintenance activity will be confined to existing roads or right-of-ways.

7. No blading or clearing of any vegetation will be allowed unless approved in writing by the Authorized Officer.

8. The holder shall install the pipeline on the surface in such a manner that will minimize suspension of the pipeline across low areas in the terrain. In hummocky or dune areas,

the pipeline will be "snaked" around hummocks and dunes rather than suspended across these features.

9. The pipeline shall be buried with a minimum of 24 inches under all roads, "two-tracks," and trails. Burial of the pipe will continue for 20 feet on each side of each crossing. The condition of the road, upon completion of construction, shall be returned to at least its former state with no bumps or dips remaining in the road surface.

10. The holder shall minimize disturbance to existing fences and other improvements on public lands. The holder is required to promptly repair improvements to at least their former state. Functional use of these improvements will be maintained at all times. The holder will contact the owner of any improvements prior to disturbing them. When necessary to pass through a fence line, the fence shall be braced on both sides of the passageway prior to cutting of the fence. No permanent gates will be allowed unless approved by the Authorized Officer.

11. In those areas where erosion control structures are required to stabilize soil conditions, the holder will install such structures as are suitable for the specific soil conditions being encountered and which are in accordance with sound resource management practices.

12. Excluding the pipe, all above-ground structures not subject to safety requirement shall be painted by the holder to blend with the natural color of the landscape. The paint used shall be a color which simulates "Standard Environmental Colors" – **Shale Green**, Munsell Soil Color No. 5Y 4/2; designated by the Rocky Mountain Five State Interagency Committee.

13. The pipeline will be identified by signs at the point of origin and completion of the right-of-way and at all road crossings. At a minimum, signs will state the holder's name, BLM serial number, and the product being transported. Signs will be maintained in a legible condition for the life of the pipeline.

14. The holder shall not use the pipeline route as a road for purposes other than routine maintenance as determined necessary by the Authorized Officer in consultation with the holder. The holder will take whatever steps are necessary to ensure that the pipeline route is not used as a roadway.

15. Any cultural and/or paleontological resource (historic or prehistoric site or object) discovered by the holder, or any person working on his behalf, on public or Federal land shall be immediately reported to the authorized officer. Holder shall suspend all operations in the immediate area of such discovery until written authorization to proceed is issued by the authorized officer. An evaluation of the discovery will be made by the authorized officer to determine appropriate cultural or scientific values. The holder will be responsible for the cost of evaluation and any decision as to proper mitigation measures will be made by the authorized officer after consulting with the holder.

16. The operator shall be held responsible if noxious weeds become established within the areas of operations. Weed control shall be required on the disturbed land where noxious weeds exist, which includes the roads, powerline corridor, and adjacent land affected by the establishment of weeds due to this action. The operator shall consult with the Authorized Officer for acceptable weed control methods, which include following EPA and BLM requirements and policies.

17. Surface pipelines must be less than or equal to 4 inches and a working pressure below 125 psi.

### **C. ELECTRIC LINES**

**A copy of the grant and attachments, including stipulations, survey plat and/or map, will be on location during construction. BLM personnel may request to you a copy of your permit during construction to ensure compliance with all stipulations.**

Holder agrees to comply with the following stipulations to the satisfaction of the Authorized Officer:

1. The holder shall indemnify the United States against any liability for damage to life or property arising from the occupancy or use of public lands under this grant.

2. The holder shall comply with all applicable Federal laws and regulations existing or hereafter enacted or promulgated. In any event, the holder shall comply with the Toxic Substances Control Act of 1976 as amended, 15 USC 2601 et seq. (1982) with regards to any toxic substances that are used, generated by or stored on the right-of-way or on facilities authorized under this right-of-way grant. (See 40 CFR, Part 702-799 and especially, provisions on polychlorinated biphenyls, 40 CFR 761.1-761.193.) Additionally, any release of toxic substances (leaks, spills, etc.) in excess of the reportable quantity established by 40 CFR, Part 117 shall be reported as required by the Comprehensive Environmental Response, Compensation, and Liability Act, section 102b. A copy of any report required or requested by any Federal agency or State government as a result of a reportable release or spill of any toxic substances shall be furnished to the authorized officer concurrent with the filing of the reports to the involved Federal agency or State government.

3. The holder agrees to indemnify the United States against any liability arising from the release of any hazardous substance or hazardous waste (as these terms are defined in the Comprehensive Environmental Response, Compensation and Liability Act of 1980, 42 U.S.C. 9601, et seq. or the Resource Conservation and Recovery Act, 42 U.S.C. 6901, et seq.) on the Right-of-Way (unless the release or threatened release is wholly unrelated to the Right-of-Way holder's activity on the Right-of-Way), or resulting from the activity of the Right-of-Way holder on the Right-of-Way. This agreement applies without regard to whether a release is caused by the holder, its agent, or unrelated third parties.

4. There will be no clearing or blading of the right-of-way unless otherwise agreed to in

writing by the Authorized Officer.

5. Power lines shall be constructed and designed in accordance to standards outlined in "Suggested Practices for Avian Protection on Power lines: The State of the Art in 2006" Edison Electric Institute, APLIC, and the California Energy Commission 2006 . The holder shall assume the burden and expense of proving that pole designs not shown in the above publication deter raptor perching, roosting, and nesting. Such proof shall be provided by a raptor expert approved by the Authorized Officer. The BLM reserves the right to require modification or additions to all powerline structures placed on this right-of-way, should they be necessary to ensure the safety of large perching birds. Such modifications and/or additions shall be made by the holder without liability or expense to the United States.

Raptor deterrence will consist of but not limited to the following: triangle perch discouragers shall be placed on each side of the cross arms and a nonconductive perching deterrence shall be placed on all vertical poles that extend past the cross arms.

6. The holder shall minimize disturbance to existing fences and other improvements on public lands. The holder is required to promptly repair improvements to at least their former state. Functional use of these improvements will be maintained at all times. The holder will contact the owner of any improvements prior to disturbing them. When necessary to pass through a fence line, the fence shall be braced on both sides of the passageway prior to cutting the fence. No permanent gates will be allowed unless approved by the Authorized Officer.

7. The BLM serial number assigned to this authorization shall be posted in a permanent, conspicuous manner where the power line crosses roads and at all serviced facilities. Numbers will be at least two inches high and will be affixed to the pole nearest the road crossing and at the facilities served.

8. Upon cancellation, relinquishment, or expiration of this grant, the holder shall comply with those abandonment procedures as prescribed by the Authorized Officer.

9. All surface structures (poles, lines, transformers, etc.) shall be removed within 180 days of abandonment, relinquishment, or termination of use of the serviced facility or facilities or within 180 days of abandonment, relinquishment, cancellation, or expiration of this grant, whichever comes first. This will not apply where the power line extends service to an active, adjoining facility or facilities.

10. Any cultural and/or paleontological resource (historic or prehistoric site or object) discovered by the holder, or any person working on his behalf, on public or Federal land shall be immediately reported to the Authorized Officer. Holder shall suspend all operations in the immediate area of such discovery until written authorization to proceed is issued by the Authorized Officer. An evaluation of the discovery will be made by the

Authorized Officer to determine appropriate actions to prevent the loss of significant cultural or scientific values. The holder will be responsible for the cost of evaluation and any decision as to proper mitigation measures will be made by the Authorized Officer after consulting with the holder.

11. Special Stipulations:

- For reclamation remove poles, lines, transformer, etc. and dispose of properly.
- Fill in any holes from the poles removed.

## **X. INTERIM RECLAMATION**

During the life of the development, all disturbed areas not needed for active support of production operations should undergo interim reclamation in order to minimize the environmental impacts of development on other resources and uses.

Within six (6) months of well completion, operators should work with BLM surface management specialists (Jim Amos: 575-234-5909) to devise the best strategies to reduce the size of the location. Interim reclamation should allow for remedial well operations, as well as safe and efficient removal of oil and gas.

During reclamation, the removal of caliche is important to increasing the success of revegetating the site. Removed caliche that is free of contaminants may be used for road repairs, fire walls or for building other roads and locations. In order to operate the well or complete workover operations, it may be necessary to drive, park and operate on restored interim vegetation within the previously disturbed area. Disturbing revegetated areas for production or workover operations will be allowed. If there is significant disturbance and loss of vegetation, the area will need to be revegetated. Communicate with the appropriate BLM office for any exceptions/exemptions if needed.

All disturbed areas after they have been satisfactorily prepared need to be reseeded with the seed mixture provided below.

Upon completion of interim reclamation, the operator shall submit a Sundry Notices and Reports on Wells, Subsequent Report of Reclamation (Form 3160-5).

## **X. FINAL ABANDONMENT & RECLAMATION**

At final abandonment, well locations, production facilities, and access roads must undergo "final" reclamation so that the character and productivity of the land are restored.

Earthwork for final reclamation must be completed within six (6) months of well plugging. All pads, pits, facility locations and roads must be reclaimed to a satisfactory revegetated, safe, and stable condition, unless an agreement is made with the landowner or BLM to keep the road and/or pad intact.

After all disturbed areas have been satisfactorily prepared; these areas need to be revegetated with the seed mixture provided below. Seeding should be accomplished by drilling on the contour whenever practical or by other approved methods. Seeding may need to be repeated until revegetation is successful, as determined by the BLM.

Operators shall contact a BLM surface protection specialist prior to surface abandonment operations for site specific objectives (Jim Amos: 575-234-5909).

Ground-level Abandoned Well Marker to avoid raptor perching: Upon the plugging and subsequent abandonment of the well, the well marker will be installed at ground level on a plate containing the pertinent information for the plugged well.

**“EXHIBIT A-1”**

**BLM SERIAL #: NM-91078**

**COMPANY REFERENCE: 5-Longview Federal 12 SWD**

**Seed Mixture 2, for Sandy Sites**

The holder shall seed all disturbed areas with the seed mixture listed below. The seed mixture shall be planted in the amounts specified in pounds of pure live seed (PLS)\* per

acre. There shall be no primary or secondary noxious weeds in the seed mixture. Seed will be tested and the viability testing of seed will be done in accordance with State law (s) and within nine (9) months prior to purchase. Commercial seed will be either certified or registered seed. The seed container will be tagged in accordance with State law(s) and available for inspection by the authorized officer.

Seed will be planted using a drill equipped with a depth regulator to ensure proper depth of planting where drilling is possible. The seed mixture will be evenly and uniformly planted over the disturbed area (smaller/heavier seeds have a tendency to drop the bottom of the drill and are planted first). The holder shall take appropriate measures to ensure this does not occur. Where drilling is not possible, seed will be broadcast and the area shall be raked or chained to cover the seed. When broadcasting the seed, the pounds per acre are to be doubled. The seeding will be repeated until a satisfactory stand is established as determined by the authorized officer. Evaluation of growth will not be made before completion of at least one full growing season after seeding.

Species to be planted in pounds of pure live seed\* per acre:

<u>Species</u>	<u>lb/acre</u>
Sand dropseed ( <i>Sporobolus cryptandrus</i> )	1.0
Sand love grass ( <i>Eragrostis trichodes</i> )	1.0
Plains bristlegrass ( <i>Setaria macrostachya</i> )	2.0

\*Pounds of pure live seed:

Pounds of seed x percent purity x percent germination = pounds pure live seed