

District I  
1625 N. French Dr., Hobbs, NM 88240  
Phone: (575) 393-6161 Fax: (575) 393-0720  
District II  
811 S. First St., Artesia, NM 88210  
Phone: (575) 748-1283 Fax: (575) 748-9720  
District III  
1000 Rio Brazos Road, Aztec, NM 87410  
Phone: (505) 334-6178 Fax: (505) 334-6170  
District IV  
1220 S. St. Francis Dr., Santa Fe, NM 87503  
Phone: (505) 476-3460 Fax: (505) 476-3462

State of New Mexico  
Energy, Minerals & Natural Resources Department  
OIL CONSERVATION DIVISION  
1220 South St. Francis Dr.  
Santa Fe, NM 87505

Form C-102  
Revised August 1, 2011  
Submit one copy to appropriate District Office

JAN 27 2016

AMENDED REPORT

RECEIVED

WELL LOCATION AND ACREAGE DEDICATION PLAT

<sup>1</sup> API Number 30-015-42169	<sup>2</sup> Pool Code 98018	<sup>3</sup> Pool Name Wildcat ; Bone Spring
<sup>4</sup> Property Code	<sup>5</sup> Property Name HORNSBY 35 FEDERAL COM	<sup>6</sup> Well Number 8H
<sup>7</sup> OGRID No. 215099	<sup>8</sup> Operator Name CIMAREX ENERGY CO.	<sup>9</sup> Elevation 3240.3'

\* Surface Location

UL or lot no.	Section	Township	Range	Lot Idn	Feet from the	North/South line	Feet from the	East/West line	County
2	35	26S	27E		290	SOUTH	2030	EAST	EDDY

\*\* Bottom Hole Location If Different From Surface

UL or lot no.	Section	Township	Range	Lot Idn	Feet from the	North/South line	Feet from the	East/West line	County
B	26	26S	27E		330	NORTH	1560	EAST	EDDY
<sup>10</sup> Dedicated Acres 448.31		<sup>11</sup> Joint or Infill		<sup>12</sup> Consolidation Code		<sup>13</sup> Order No.			

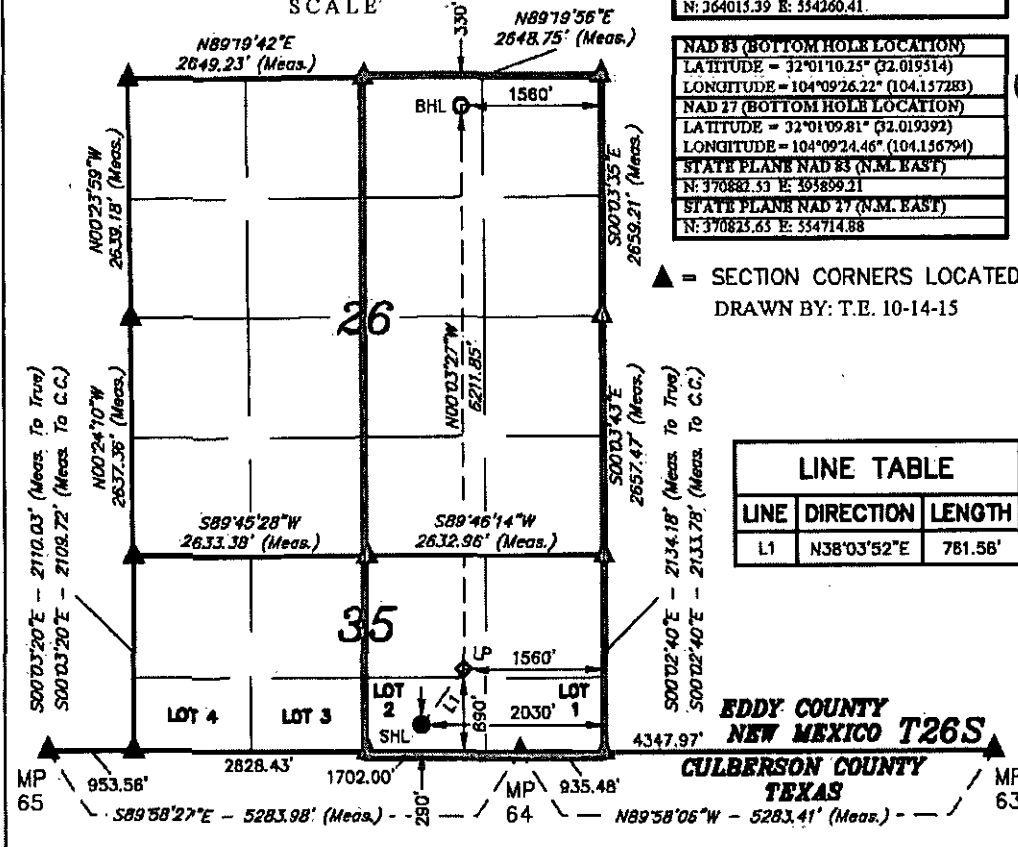
No allowable will be assigned to this completion until all interests have been consolidated or a non-standard unit has been approved by the division.

**NOTE:**

Distances referenced on plat to section lines and lease lines are perpendicular.



SCALE



<b>NAD 83 (SURFACE HOLE LOCATION)</b>	
LATITUDE = 32°00'02.86" (32.000794)	
LONGITUDE = 104°09'21.63" (104.158786)	
<b>NAD 27 (SURFACE HOLE LOCATION)</b>	
LATITUDE = 32°00'02.42" (32.000672)	
LONGITUDE = 104°09'29.86" (104.158294)	
STATE PLANE NAD 83 (N.M. EAST)	
N: 364072.13 E: 393444.86	
STATE PLANE NAD 27 (N.M. EAST)	
N: 364013.39 E: 354260.41	

<b>NAD 83 (BOTTOM HOLE LOCATION)</b>	
LATITUDE = 32°01'10.25" (32.019314)	
LONGITUDE = 104°09'26.22" (104.157283)	
<b>NAD 27 (BOTTOM HOLE LOCATION)</b>	
LATITUDE = 32°01'09.81" (32.019392)	
LONGITUDE = 104°09'24.46" (104.156794)	
STATE PLANE NAD 83 (N.M. EAST)	
N: 370882.33 E: 393899.21	
STATE PLANE NAD 27 (N.M. EAST)	
N: 370823.63 E: 354714.88	

LINE TABLE		
LINE	DIRECTION	LENGTH
L1	N38°03'52"E	781.58'

**OPERATOR CERTIFICATION**

I hereby certify that the information contained herein is true and complete to the best of my knowledge and belief, and that this organization either owns a working interest or unleased mineral interest in the land including the proposed bottom hole location or has a right to drill this well at this location pursuant to a contract with an owner of such a mineral or working interest, or to a voluntary pooling agreement or a compulsory pooling order heretofore entered by the division.

*Aricka Easterling* 10/22/15  
Signature Date

Aricka Easterling  
Printed Name

aeasterling@cimarex.com  
E-mail Address

aeasterling@cimarex.com

E-mail Address

**SURVEYOR CERTIFICATION**

I hereby certify that the well location shown on this plat was plotted from field notes of actual surveys made by me or under my supervision, and that the same is true and correct to the best of my belief.

October 5, 2015

Date of Survey

Signature and Seal of Professional Surveyor:



Certificate Number:



**Cimarex Hornsby 35 Federal Com 8H Rev3 JLP 22-Oct-15 Proposal  
Geodetic Report  
(Non-Def Plan)**



**Report Date:** October 22, 2015 - 04:23 PM  
**Client:** Cimarex  
**Field:** NM Eddy County (NAD 83)  
**Structure / Slot:** Cimarex Hornsby 35 Federal Com 8H / Cimarex Hornsby 35 Federal Com 8H  
**Well:** Cimarex Hornsby 35 Federal Com 8H  
**Borehole:** Original Borehole  
**UWI / API#:** Unknown / Unknown  
**Survey Name:** Cimarex Hornsby 35 Federal Com 8H Rev3 JLP 22-Oct-15  
**Survey Date:** October 14, 2013  
**Tort / AHD / DDI / ERD Ratio:** 133.064 \* / 7098.494 ft / 6.247 / 0.912  
**Coordinate Reference System:** NAD83 New Mexico State Plane, Eastern Zone, US Feet  
**Location Lat / Long:** N 32° 0' 2.85840", W 104° 9' 31.82960"  
**Location Grid N/E Y/X:** N 364072.039 ftUS, E 595444.661 ftUS  
**CRS Grid Convergence Angle:** 0.0925 \*  
**Grid Scale Factor:** 0.99991244  
**Version / Patch:** 2.8.572.0

**Survey / DLS Computation:** Minimum Curvature / Lubinski  
**Vertical Section Azimuth:** 3.821 \* (Grid North)  
**Vertical Section Origin:** 0.000 ft, 0.000 ft  
**TVD Reference Datum:** Ground level  
**TVD Reference Elevation:** 3240.300 ft above MSL  
**Seabed / Ground Elevation:** 3240.300 ft above MSL  
**Magnetic Declination:** 7.685 \*  
**Total Gravity Field Strength:** 998.6837mgn (9 80665 Based)  
**Gravity Model:** DOX  
**Total Magnetic Field Strength:** 48368.486 nT  
**Magnetic Dip Angle:** 59.739 \*  
**Declination Date:** October 14, 2013  
**Magnetic Declination Model:** HDGM 2015  
**North Reference:** Grid North  
**Grid Convergence Used:** 0.0925 \*  
**Total Corr Mag North->Grid North:** 7.5927 \*  
**Local Coord Referenced To:** Structure Reference Point

Comments	MD (ft)	Incl (°)	Azim Grid (°)	TVD (ft)	VSEC (ft)	NS (ft)	EW (ft)	DLS ("/100ft)	Northing (ftUS)	Easting (ftUS)	Latitude (N/S ° ' ")	Longitude (E/W ° ' ")
SHL Cimarex Hornsby 35 Federal Com 8H	0.00	0.00	90.00	0.00	0.00	0.00	0.00	N/A	364072.04	595444.66	N 32 0 2.86 W 104 9 31.63	
	100.00	0.00	90.00	100.00	0.00	0.00	0.00	0.00	364072.04	595444.66	N 32 0 2.86 W 104 9 31.63	
	200.00	0.00	90.00	200.00	0.00	0.00	0.00	0.00	364072.04	595444.66	N 32 0 2.86 W 104 9 31.63	
	300.00	0.00	90.00	300.00	0.00	0.00	0.00	0.00	364072.04	595444.66	N 32 0 2.86 W 104 9 31.63	
	400.00	0.00	90.00	400.00	0.00	0.00	0.00	0.00	364072.04	595444.66	N 32 0 2.86 W 104 9 31.63	
	500.00	0.00	90.00	500.00	0.00	0.00	0.00	0.00	364072.04	595444.66	N 32 0 2.86 W 104 9 31.63	
	600.00	0.00	90.00	600.00	0.00	0.00	0.00	0.00	364072.04	595444.66	N 32 0 2.86 W 104 9 31.63	
	700.00	0.00	90.00	700.00	0.00	0.00	0.00	0.00	364072.04	595444.66	N 32 0 2.86 W 104 9 31.63	
	800.00	0.00	90.00	800.00	0.00	0.00	0.00	0.00	364072.04	595444.66	N 32 0 2.86 W 104 9 31.63	
	900.00	0.00	90.00	900.00	0.00	0.00	0.00	0.00	364072.04	595444.66	N 32 0 2.86 W 104 9 31.63	
	1000.00	0.00	90.00	1000.00	0.00	0.00	0.00	0.00	364072.04	595444.66	N 32 0 2.86 W 104 9 31.63	
	1100.00	0.00	90.00	1100.00	0.00	0.00	0.00	0.00	364072.04	595444.66	N 32 0 2.86 W 104 9 31.63	
	1200.00	0.00	90.00	1200.00	0.00	0.00	0.00	0.00	364072.04	595444.66	N 32 0 2.86 W 104 9 31.63	
	1300.00	0.00	90.00	1300.00	0.00	0.00	0.00	0.00	364072.04	595444.66	N 32 0 2.86 W 104 9 31.63	
	1400.00	0.00	90.00	1400.00	0.00	0.00	0.00	0.00	364072.04	595444.66	N 32 0 2.86 W 104 9 31.63	
	1500.00	0.00	90.00	1500.00	0.00	0.00	0.00	0.00	364072.04	595444.66	N 32 0 2.86 W 104 9 31.63	
	1600.00	0.00	90.00	1600.00	0.00	0.00	0.00	0.00	364072.04	595444.66	N 32 0 2.86 W 104 9 31.63	
	1700.00	0.00	90.00	1700.00	0.00	0.00	0.00	0.00	364072.04	595444.66	N 32 0 2.86 W 104 9 31.63	
	1800.00	0.00	90.00	1800.00	0.00	0.00	0.00	0.00	364072.04	595444.66	N 32 0 2.86 W 104 9 31.63	
	1900.00	0.00	90.00	1900.00	0.00	0.00	0.00	0.00	364072.04	595444.66	N 32 0 2.86 W 104 9 31.63	

Comments	MD (ft)	Incl (°)	Azim Grid (°)	TVD (ft)	VSEC (ft)	NS (ft)	EW (ft)	DLS (%/100ft)	Northing (ftUS)	EastIng (ftUS)	Latitude (N/S ° ' ")	Longitude (E/W ° ' ")
	2000.00	0.00	90.00	2000.00	0.00	0.00	0.00	0.00	364072.04	595444.66	N 32 0 2.86 W 104	9 31.63
	2100.00	0.00	90.00	2100.00	0.00	0.00	0.00	0.00	364072.04	595444.66	N 32 0 2.86 W 104	9 31.63
	2200.00	0.00	90.00	2200.00	0.00	0.00	0.00	0.00	364072.04	595444.66	N 32 0 2.86 W 104	9 31.63
	2300.00	0.00	90.00	2300.00	0.00	0.00	0.00	0.00	364072.04	595444.66	N 32 0 2.86 W 104	9 31.63
	2400.00	0.00	90.00	2400.00	0.00	0.00	0.00	0.00	364072.04	595444.66	N 32 0 2.86 W 104	9 31.63
	2500.00	0.00	90.00	2500.00	0.00	0.00	0.00	0.00	364072.04	595444.66	N 32 0 2.86 W 104	9 31.63
	2600.00	0.00	90.00	2600.00	0.00	0.00	0.00	0.00	364072.04	595444.66	N 32 0 2.86 W 104	9 31.63
	2700.00	0.00	90.00	2700.00	0.00	0.00	0.00	0.00	364072.04	595444.66	N 32 0 2.86 W 104	9 31.63
	2800.00	0.00	90.00	2800.00	0.00	0.00	0.00	0.00	364072.04	595444.66	N 32 0 2.86 W 104	9 31.63
	2900.00	0.00	90.00	2900.00	0.00	0.00	0.00	0.00	364072.04	595444.66	N 32 0 2.86 W 104	9 31.63
	3000.00	0.00	90.00	3000.00	0.00	0.00	0.00	0.00	364072.04	595444.66	N 32 0 2.86 W 104	9 31.63
	3100.00	0.00	90.00	3100.00	0.00	0.00	0.00	0.00	364072.04	595444.66	N 32 0 2.86 W 104	9 31.63
	3200.00	0.00	90.00	3200.00	0.00	0.00	0.00	0.00	364072.04	595444.66	N 32 0 2.86 W 104	9 31.63
	3300.00	0.00	90.00	3300.00	0.00	0.00	0.00	0.00	364072.04	595444.66	N 32 0 2.86 W 104	9 31.63
	3400.00	0.00	90.00	3400.00	0.00	0.00	0.00	0.00	364072.04	595444.66	N 32 0 2.86 W 104	9 31.63
	3500.00	0.00	90.00	3500.00	0.00	0.00	0.00	0.00	364072.04	595444.66	N 32 0 2.86 W 104	9 31.63
	3600.00	0.00	90.00	3600.00	0.00	0.00	0.00	0.00	364072.04	595444.66	N 32 0 2.86 W 104	9 31.63
	3700.00	0.00	90.00	3700.00	0.00	0.00	0.00	0.00	364072.04	595444.66	N 32 0 2.86 W 104	9 31.63
	3800.00	0.00	90.00	3800.00	0.00	0.00	0.00	0.00	364072.04	595444.66	N 32 0 2.86 W 104	9 31.63
	3900.00	0.00	90.00	3900.00	0.00	0.00	0.00	0.00	364072.04	595444.66	N 32 0 2.86 W 104	9 31.63
	4000.00	0.00	90.00	4000.00	0.00	0.00	0.00	0.00	364072.04	595444.66	N 32 0 2.86 W 104	9 31.63
	4100.00	0.00	90.00	4100.00	0.00	0.00	0.00	0.00	364072.04	595444.66	N 32 0 2.86 W 104	9 31.63
	4200.00	0.00	90.00	4200.00	0.00	0.00	0.00	0.00	364072.04	595444.66	N 32 0 2.86 W 104	9 31.63
	4300.00	0.00	90.00	4300.00	0.00	0.00	0.00	0.00	364072.04	595444.66	N 32 0 2.86 W 104	9 31.63
	4400.00	0.00	90.00	4400.00	0.00	0.00	0.00	0.00	364072.04	595444.66	N 32 0 2.86 W 104	9 31.63
	4500.00	0.00	90.00	4500.00	0.00	0.00	0.00	0.00	364072.04	595444.66	N 32 0 2.86 W 104	9 31.63
	4600.00	0.00	90.00	4600.00	0.00	0.00	0.00	0.00	364072.04	595444.66	N 32 0 2.86 W 104	9 31.63
	4700.00	0.00	90.00	4700.00	0.00	0.00	0.00	0.00	364072.04	595444.66	N 32 0 2.86 W 104	9 31.63
	4800.00	0.00	90.00	4800.00	0.00	0.00	0.00	0.00	364072.04	595444.66	N 32 0 2.86 W 104	9 31.63
	4900.00	0.00	90.00	4900.00	0.00	0.00	0.00	0.00	364072.04	595444.66	N 32 0 2.86 W 104	9 31.63
	5000.00	0.00	90.00	5000.00	0.00	0.00	0.00	0.00	364072.04	595444.66	N 32 0 2.86 W 104	9 31.63
	5100.00	0.00	90.00	5100.00	0.00	0.00	0.00	0.00	364072.04	595444.66	N 32 0 2.86 W 104	9 31.63
	5200.00	0.00	90.00	5200.00	0.00	0.00	0.00	0.00	364072.04	595444.66	N 32 0 2.86 W 104	9 31.63
	5300.00	0.00	90.00	5300.00	0.00	0.00	0.00	0.00	364072.04	595444.66	N 32 0 2.86 W 104	9 31.63
	5400.00	0.00	90.00	5400.00	0.00	0.00	0.00	0.00	364072.04	595444.66	N 32 0 2.86 W 104	9 31.63
	5500.00	0.00	90.00	5500.00	0.00	0.00	0.00	0.00	364072.04	595444.66	N 32 0 2.86 W 104	9 31.63
	5600.00	0.00	90.00	5600.00	0.00	0.00	0.00	0.00	364072.04	595444.66	N 32 0 2.86 W 104	9 31.63
	5700.00	0.00	90.00	5700.00	0.00	0.00	0.00	0.00	364072.04	595444.66	N 32 0 2.86 W 104	9 31.63
	5800.00	0.00	90.00	5800.00	0.00	0.00	0.00	0.00	364072.04	595444.66	N 32 0 2.86 W 104	9 31.63
	5900.00	0.00	90.00	5900.00	0.00	0.00	0.00	0.00	364072.04	595444.66	N 32 0 2.86 W 104	9 31.63
	6000.00	0.00	90.00	6000.00	0.00	0.00	0.00	0.00	364072.04	595444.66	N 32 0 2.86 W 104	9 31.63
	6100.00	0.00	90.00	6100.00	0.00	0.00	0.00	0.00	364072.04	595444.66	N 32 0 2.86 W 104	9 31.63
	6200.00	0.00	90.00	6200.00	0.00	0.00	0.00	0.00	364072.04	595444.66	N 32 0 2.86 W 104	9 31.63
	6300.00	0.00	90.00	6300.00	0.00	0.00	0.00	0.00	364072.04	595444.66	N 32 0 2.86 W 104	9 31.63
	6400.00	0.00	90.00	6400.00	0.00	0.00	0.00	0.00	364072.04	595444.66	N 32 0 2.86 W 104	9 31.63
	6500.00	0.00	90.00	6500.00	0.00	0.00	0.00	0.00	364072.04	595444.66	N 32 0 2.86 W 104	9 31.63
	6600.00	0.00	90.00	6600.00	0.00	0.00	0.00	0.00	364072.04	595444.66	N 32 0 2.86 W 104	9 31.63
	6700.00	0.00	90.00	6700.00	0.00	0.00	0.00	0.00	364072.04	595444.66	N 32 0 2.86 W 104	9 31.63
	6800.00	0.00	90.00	6800.00	0.00	0.00	0.00	0.00	364072.04	595444.66	N 32 0 2.86 W 104	9 31.63

Comments	MD (ft)	Incl (°)	Azim Grid (°)	TVD (ft)	VSEC (m)	NS (ft)	EW (ft)	DLS ("/100ft)	Northing (ftUS)	Easting (ftUS)	Latitude (N/S ° ' ")	Longitude (E/W ° ' ")
	6900.00	0.00	90.00	6900.00	0.00	0.00	0.00	0.00	364072.04	595444.66	N 32 0 2.86 W 104	9 31.63
KOP - Build 12"/100ft DLS	7000.00	0.00	90.00	7000.00	0.00	0.00	0.00	0.00	364072.04	595444.66	N 32 0 2.86 W 104	9 31.63
	7100.00	0.00	90.00	7100.00	0.00	0.00	0.00	0.00	364072.04	595444.66	N 32 0 2.86 W 104	9 31.63
	7105.55	0.00	90.00	7105.55	0.00	0.00	0.00	0.00	364072.04	595444.66	N 32 0 2.86 W 104	9 31.63
	7200.00	11.33	90.00	7199.39	0.62	0.00	9.31	12.00	364072.04	595453.97	N 32 0 2.86 W 104	9 31.52
	7300.00	23.33	90.00	7294.67	2.60	0.00	39.05	12.00	364072.04	595483.71	N 32 0 2.86 W 104	9 31.18
Build 12"/100ft DLS	7400.00	35.33	90.00	7381.69	5.86	0.00	87.95	12.00	364072.04	595532.60	N 32 0 2.86 W 104	9 30.61
	7463.88	43.00	90.00	7431.18	8.55	0.00	128.27	12.00	364072.04	595572.92	N 32 0 2.86 W 104	9 30.14
	7500.00	43.18	83.86	7457.57	11.55	1.37	152.88	12.00	364073.40	595597.53	N 32 0 2.87 W 104	9 29.85
	7600.00	45.44	66.75	7529.37	33.88	19.27	219.86	12.00	364091.31	595664.51	N 32 0 3.05 W 104	9 29.08
	7700.00	49.96	51.69	7596.87	75.92	57.20	282.66	12.00	364129.24	595727.50	N 32 0 3.42 W 104	9 28.34
Landing point	7800.00	56.15	38.80	7657.11	135.85	113.50	339.13	12.00	364185.53	595783.76	N 32 0 3.98 W 104	9 27.69
	7900.00	63.49	27.80	7707.45	211.03	185.71	386.19	12.00	364257.73	595830.82	N 32 0 4.69 W 104	9 27.14
	8000.00	71.58	18.19	7745.71	298.18	270.66	422.00	12.00	364342.68	595866.62	N 32 0 5.53 W 104	9 26.72
	8100.00	80.09	9.46	7770.20	393.50	364.86	444.99	12.00	364436.66	595889.61	N 32 0 6.46 W 104	9 26.46
	8200.00	88.83	1.18	7779.86	492.82	463.58	454.15	12.00	364535.58	595898.77	N 32 0 7.44 W 104	9 26.35
	8214.41	90.09	0.01	7780.00	507.20	477.99	454.30	12.00	364549.99	595898.92	N 32 0 7.58 W 104	9 26.35
	8300.00	90.09	0.01	7779.86	592.60	563.58	454.31	0.00	364635.57	595898.83	N 32 0 8.43 W 104	9 26.34
	8400.00	90.09	0.01	7779.70	692.38	663.58	454.32	0.00	364735.56	595898.84	N 32 0 9.42 W 104	9 26.34
	8500.00	90.09	0.01	7779.55	792.16	763.58	454.32	0.00	364835.55	595898.84	N 32 0 10.41 W 104	9 26.34
	8600.00	90.09	0.01	7779.39	891.94	863.58	454.33	0.00	364935.54	595898.95	N 32 0 11.40 W 104	9 26.34
	8700.00	90.09	0.01	7779.23	991.71	963.58	454.34	0.00	365035.53	595898.86	N 32 0 12.39 W 104	9 26.34
	8800.00	90.09	0.01	7779.07	1091.49	1063.58	454.35	0.00	365135.52	595898.87	N 32 0 13.38 W 104	9 26.33
	8900.00	90.09	0.01	7778.91	1191.27	1163.58	454.36	0.00	365235.52	595898.98	N 32 0 14.37 W 104	9 26.33
	9000.00	90.09	0.01	7778.75	1291.05	1263.58	454.37	0.00	365335.51	595898.99	N 32 0 15.35 W 104	9 26.33
	9100.00	90.09	0.01	7778.59	1390.83	1363.58	454.38	0.00	365435.50	595899.00	N 32 0 16.34 W 104	9 26.33
	9200.00	90.09	0.01	7778.43	1490.61	1463.58	454.39	0.00	365535.49	595899.01	N 32 0 17.33 W 104	9 26.33
	9300.00	90.09	0.01	7778.28	1590.38	1563.58	454.39	0.00	365635.48	595899.02	N 32 0 18.32 W 104	9 26.32
	9400.00	90.09	0.01	7778.12	1690.16	1663.58	454.40	0.00	365735.47	595899.03	N 32 0 19.31 W 104	9 26.32
	9500.00	90.09	0.01	7777.96	1789.94	1763.58	454.41	0.00	365835.46	595899.02	N 32 0 20.30 W 104	9 26.32
	9600.00	90.09	0.01	7777.80	1889.72	1863.58	454.42	0.00	365935.45	595899.04	N 32 0 21.29 W 104	9 26.32
	9700.00	90.09	0.01	7777.64	1989.50	1963.58	454.43	0.00	366035.44	595899.05	N 32 0 22.28 W 104	9 26.32
	9800.00	90.09	0.01	7777.48	2089.27	2063.58	454.44	0.00	366135.43	595899.06	N 32 0 23.27 W 104	9 26.31
	9900.00	90.09	0.01	7777.32	2189.05	2163.58	454.45	0.00	366235.42	595899.07	N 32 0 24.26 W 104	9 26.31
	10000.00	90.09	0.01	7777.17	2288.83	2263.58	454.46	0.00	366335.42	595899.08	N 32 0 25.25 W 104	9 26.31
	10100.00	90.09	0.01	7777.01	2388.61	2363.58	454.47	0.00	366435.41	595899.09	N 32 0 26.24 W 104	9 26.31
	10200.00	90.09	0.01	7776.85	2488.39	2463.58	454.47	0.00	366535.40	595899.09	N 32 0 27.23 W 104	9 26.31
	10300.00	90.09	0.01	7776.69	2588.17	2563.58	454.48	0.00	366635.39	595899.10	N 32 0 28.22 W 104	9 26.30
	10400.00	90.09	0.01	7776.53	2687.94	2663.58	454.49	0.00	366735.38	595899.11	N 32 0 29.21 W 104	9 26.30
	10500.00	90.09	0.01	7776.38	2787.72	2763.58	454.50	0.00	366835.37	595899.12	N 32 0 30.20 W 104	9 26.30
	10600.00	90.09	0.01	7776.22	2887.50	2863.58	454.51	0.00	366935.36	595899.13	N 32 0 31.19 W 104	9 26.30
	10700.00	90.09	0.01	7776.06	2987.28	2963.58	454.52	0.00	367035.35	595899.14	N 32 0 32.18 W 104	9 26.30
	10800.00	90.09	0.01	7775.90	3087.06	3063.58	454.53	0.00	367135.34	595899.15	N 32 0 33.17 W 104	9 26.29
	10900.00	90.09	0.01	7775.74	3186.84	3163.58	454.54	0.00	367235.33	595899.16	N 32 0 34.16 W 104	9 26.29
	11000.00	90.09	0.01	7775.58	3286.61	3263.58	454.54	0.00	367335.33	595899.16	N 32 0 35.15 W 104	9 26.29
	11100.00	90.09	0.01	7775.43	3386.39	3363.58	454.55	0.00	367435.32	595899.17	N 32 0 36.14 W 104	9 26.29

Comments	MD (ft)	Incl (°)	Azim Grid (°)	TVD (ft)	VSEC (ft)	NS (ft)	EW (ft)	DLS (°/100ft)	Northing (ftUS)	Easting (ftUS)	Latitude (N/S ° ' ")	Longitude (E/W ° ' ")
	11200.00	90.09	0.01	7775.27	3486.17	3463.58	454.56	0.00	367535.31	595899.18	N 32 0 37.12 W 104	9 26.29
	11300.00	90.09	0.01	7775.11	3585.95	3563.58	454.57	0.00	367635.30	595899.19	N 32 0 36.11 W 104	9 26.28
	11400.00	90.09	0.01	7774.95	3685.73	3663.58	454.58	0.00	367735.29	595899.20	N 32 0 39.10 W 104	9 26.28
	11500.00	90.09	0.01	7774.79	3785.50	3763.58	454.59	0.00	367835.28	595899.21	N 32 0 40.09 W 104	9 26.28
	11600.00	90.09	0.01	7774.64	3885.28	3863.58	454.60	0.00	367935.27	595899.22	N 32 0 41.08 W 104	9 26.28
	11700.00	90.09	0.01	7774.48	3985.06	3963.58	454.61	0.00	368035.26	595899.23	N 32 0 42.07 W 104	9 26.28
	11800.00	90.09	0.01	7774.32	4084.84	4063.58	454.62	0.00	368135.25	595899.24	N 32 0 43.06 W 104	9 26.27
	11900.00	90.09	0.01	7774.16	4184.62	4163.58	454.62	0.00	368235.24	595899.24	N 32 0 44.05 W 104	9 26.27
	12000.00	90.09	0.01	7774.01	4284.40	4263.58	454.63	0.00	368335.23	595899.25	N 32 0 45.04 W 104	9 26.27
	12100.00	90.09	0.01	7773.85	4384.17	4363.58	454.64	0.00	368435.23	595899.26	N 32 0 46.03 W 104	9 26.27
	12200.00	90.09	0.01	7773.69	4483.95	4463.58	454.65	0.00	368535.22	595899.27	N 32 0 47.02 W 104	9 26.27
	12300.00	90.09	0.01	7773.53	4583.73	4563.58	454.66	0.00	368635.21	595899.28	N 32 0 48.01 W 104	9 26.26
	12400.00	90.09	0.01	7773.38	4683.51	4663.58	454.67	0.00	368735.20	595899.29	N 32 0 49.00 W 104	9 26.26
	12500.00	90.09	0.01	7773.22	4783.29	4763.58	454.68	0.00	368835.19	595899.30	N 32 0 49.99 W 104	9 26.26
	12600.00	90.09	0.01	7773.06	4883.06	4863.58	454.69	0.00	368935.18	595899.31	N 32 0 50.98 W 104	9 26.26
	12700.00	90.09	0.01	7772.90	4982.84	4963.58	454.69	0.00	369035.17	595899.31	N 32 0 51.97 W 104	9 26.26
	12800.00	90.09	0.01	7772.75	5082.62	5063.58	454.70	0.00	369135.16	595899.32	N 32 0 52.96 W 104	9 26.25
	12900.00	90.09	0.01	7772.59	5182.40	5163.58	454.71	0.00	369235.15	595899.33	N 32 0 53.95 W 104	9 26.25
	13000.00	90.09	0.01	7772.43	5282.18	5263.58	454.72	0.00	369335.14	595899.34	N 32 0 54.94 W 104	9 26.25
	13100.00	90.09	0.01	7772.27	5381.96	5363.58	454.73	0.00	369435.13	595899.35	N 32 0 55.93 W 104	9 26.25
	13200.00	90.09	0.01	7772.12	5481.73	5463.58	454.74	0.00	369535.13	595899.36	N 32 0 56.92 W 104	9 26.25
	13300.00	90.09	0.01	7771.96	5581.51	5563.58	454.75	0.00	369635.12	595899.37	N 32 0 57.91 W 104	9 26.24
	13400.00	90.09	0.01	7771.80	5681.29	5663.58	454.76	0.00	369735.11	595899.38	N 32 0 58.89 W 104	9 26.24
	13500.00	90.09	0.01	7771.64	5781.07	5763.58	454.77	0.00	369835.10	595899.39	N 32 0 59.88 W 104	9 26.24
	13600.00	90.09	0.01	7771.49	5880.85	5863.58	454.77	0.00	369935.09	595899.39	N 32 1 0 8.87 W 104	9 26.24
	13700.00	90.09	0.01	7771.33	5980.63	5963.58	454.78	0.00	370035.08	595899.40	N 32 1 1 8.86 W 104	9 26.24
	13800.00	90.09	0.01	7771.17	6080.40	6063.58	454.79	0.00	370135.07	595899.41	N 32 1 2 8.85 W 104	9 26.23
	13900.00	90.09	0.01	7771.02	6180.18	6163.58	454.80	0.00	370235.06	595899.42	N 32 1 3 8.84 W 104	9 26.23
	14000.00	90.09	0.01	7770.86	6279.96	6263.57	454.81	0.00	370335.05	595899.43	N 32 1 4 8.83 W 104	9 26.23
	14100.00	90.09	0.01	7770.70	6379.74	6363.57	454.82	0.00	370435.04	595899.44	N 32 1 5 8.82 W 104	9 26.23
	14200.00	90.09	0.01	7770.55	6479.52	6463.57	454.83	0.00	370535.03	595899.45	N 32 1 6 8.81 W 104	9 26.23
	14300.00	90.09	0.01	7770.39	6579.29	6563.57	454.84	0.00	370635.03	595899.46	N 32 1 7 8.80 W 104	9 26.22
	14400.00	90.09	0.01	7770.23	6679.07	6663.57	454.85	0.00	370735.02	595899.47	N 32 1 8 7.79 W 104	9 26.22
	14500.00	90.09	0.01	7770.07	6778.85	6763.57	454.85	0.00	370835.01	595899.47	N 32 1 9 7.78 W 104	9 26.22
Cimarex Hornsby 35 Federal Com 8H PBHL	14547.55	90.09	0.01	7770.00	6828.30	6811.13	454.86	0.00	370882.56	595899.48	N 32 1 10 2.5 W 104	9 26.22

Survey Type: Non-Def Plan

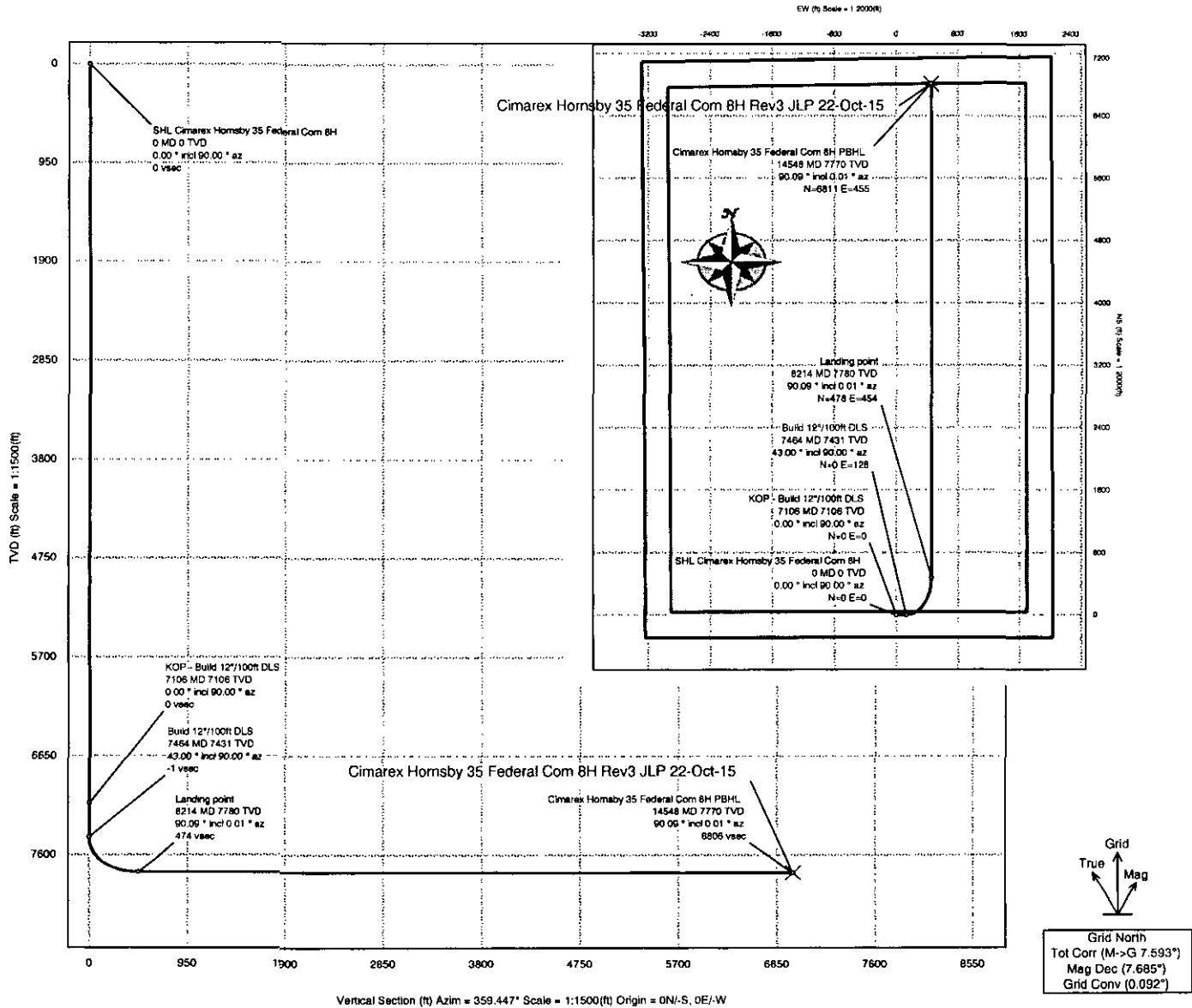
Survey Error Model: ISCWSA Rev 0 \*\*\* 3-D 95 000% Confidence 2.7955 sigma  
 Survey Program:

Description	Part	MD From (ft)	MD To (ft)	EOU Freq (ft)	Hole Size (in)	Casing Diameter (in)	Survey Tool Type	Borehole / Survey
	1	0.000	9416.000	1/100.000	30.000	30.000	SLB_MWD-POOR	Original Borehole / Cimarex Hornsby 35 Federal Com 8H

Comments	MD (ft)	Incl (°)	Azlm Grid (°)	TVD (ft)	VSEC (ft)	NS (ft)	EW (ft)	DLS (%/100ft)	Northing (ftUS)	Easting (ftUS)	Latitude (N/S ° ' ")	Longitude (E/W ° ' ")
		1	9416.000	14547.554	1/100.000	30.000	30.000	SLB_MWD-STD				
											Original Borehole / Cimarex Hornsby 35 Federal Com 8H	

<b>Borehole:</b> Original Borehole	<b>Well:</b> Hornsby 35 Federal Com 8H	<b>Field:</b> NM Eddy County (NAD 83)	<b>Structure:</b> TBD
---------------------------------------	---	--	--------------------------

<b>Gravity &amp; Magnetic Parameters</b>		<b>Surface Location</b>		<b>Miscellaneous</b>	
Model: HDGM	Dip: 59.730°	Date: 14-Oct-2013	NAD83 New Mexico State Plane, Eastern Zone, US Feet	Slot: 8H	TVD Ref: Ground level(3240.3ft above MSL)
Mag Dec: 7.685°	FS: 48368.486ft	Gravity FS: 998.684mgm (0.80665 Based)	Lat: N 32 0 2.86 Northing: 364072.04ftU Grid Conv: 0.0925°	Scale Fact: 0.99991244	Plan: Rev3 JLP 22-Oct-15
			Lon: W 104 9 31.63 Easting: 595444.66ftU		



Critical Points								
Critical Point	MD	INCL	AZIM	TVD	VSEC	N(+)/S(-)	E(+)/W(-)	DLS
SHL Cimarex Hornsby 35 Federal Com 8H	0.00	0.00	90.00	0.00	0.00	0.00	0.00	
KOP - Build 12"/100ft DLS	7105.55	0.00	90.00	7105.55	0.00	0.00	0.00	0.00
Build 12"/100ft DLS	7463.88	43.00	90.00	7431.18	8.55	0.00	128.27	12.00
Landing point	8214.41	90.09	0.01	7780.00	507.20	477.99	454.30	12.00
Cimarex Hornsby 35 Federal Com 8H PBHL	14547.55	90.09	0.01	7770.00	6826.30	6811.13	454.86	0.00

<b>CONTROLLED</b>	
Plan ref	Cimarex Hornsby 35 Federal Com 8H Rev3 JLP 22-Oct-15
Drawing ref	
Copy number	of 3
Date	22-Oct-2015
1	Client
2	Client
3	Office
4	Office
Copy number	for