

# NM OIL CONSERVATION ARTESIA DISTRICT

District I  
1625 N. French Dr.; Hobbs, NM 88240  
Phone: (575) 393-6161 Fax: (575) 393-0720  
District II  
811 S. First St., Artesia, NM 88210  
Phone: (575) 748-1283 Fax: (575) 748-9720  
District III  
1000 Rio Brazos Road, Aztec, NM 87410  
Phone: (505) 334-6178 Fax: (505) 334-6170  
District IV  
1220 S. St. Francis Dr., Santa Fe, NM 87505  
Phone: (505) 476-3460 Fax: (505) 476-3462

State of New Mexico  
Energy, Minerals & Natural Resources Department  
OIL CONSERVATION DIVISION  
1220 South St. Francis Dr.  
Santa Fe, NM 87505

JAN 22 2016

RECEIVED

Form C-102  
Revised August 1, 2011  
Submit one copy to appropriate  
District Office

☐ AMENDED REPORT

## WELL LOCATION AND ACREAGE DEDICATION PLAT

<sup>1</sup> API Number 30-015-42974	<sup>2</sup> Pool Code 96409	<sup>3</sup> Pool Name Forehand Ranch; Wolfcamp, SW
<sup>4</sup> Property Code 315263	<sup>5</sup> Property Name STERLING POUND 20/29 W2DE STATE COM	
<sup>7</sup> OGRID NO. 14744	<sup>8</sup> Operator Name MEWBOURNE OIL COMPANY	<sup>9</sup> Well Number 1H
		<sup>9</sup> Elevation 3185'

### <sup>10</sup> Surface Location

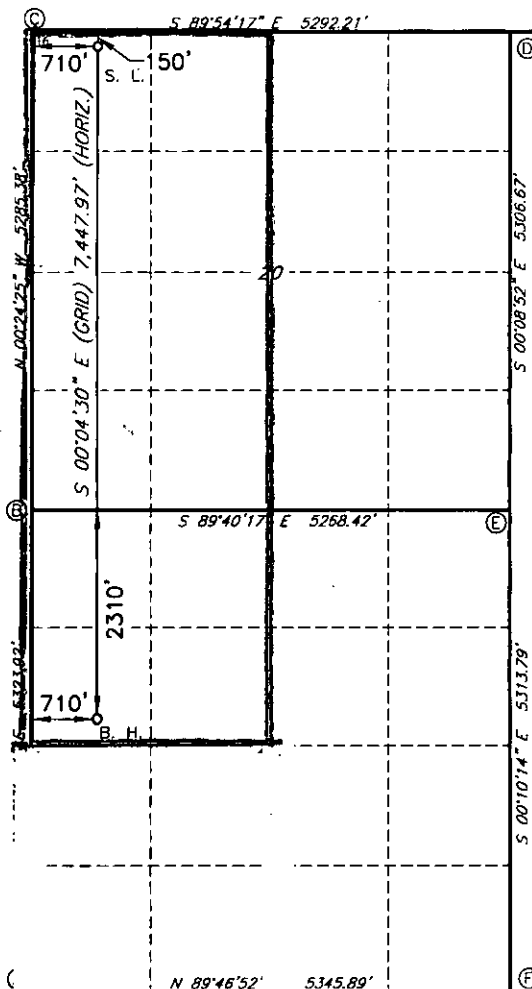
UL or lot no.	Section	Township	Range	Lot Idn	Feet from the	North/South line	Feet from the	East/West line	County
D	20	23S	27E		150	NORTH	710	WEST	EDDY

### <sup>11</sup> Bottom Hole Location If Different From Surface

UL or lot no.	Section	Township	Range	Lot Idn	Feet from the	North/South line	Feet from the	East/West line	County
E	29	23S	27E		2045	NORTH	700	WEST	EDDY

<sup>12</sup> Dedicated Acres 480	<sup>13</sup> Joint or Infill	<sup>14</sup> Consolidation Code	<sup>15</sup> Order No.
--------------------------------------	-------------------------------	----------------------------------	-------------------------

No allowable will be assigned to this completion until all interest have been consolidated or a non-standard unit has been approved by the division.



GEODETIC DATA  
NAD 27 GRID - NM EAST

SURFACE LOCATION  
N 471804.9 - E 535672.9

LAT: 32.29705545° N  
LONG: 104.21788390° W

BOTTOM HOLE  
N 464358.7 - E 535682.6

CORNER DATA  
NAD 27 GRID - NM EAST

A: CALCULATED CORNER  
N 461349.8 - E 534937.8

B: CALCULATED CORNER  
N 466672.1 - E 534999.5

C: PK NAIL IN ROAD  
N 471956.1 - E 534962.0

D: FOUND 5/8\" REBAR  
W/ALUM CAP  
N 471947.3 - E 540253.0

E: FOUND 1-1/2\" IRON PIPE  
N 466641.9 - E 540266.6

F: FOUND 1/2\" REBAR  
N 461329.4 - E 540282.4

### <sup>17</sup> OPERATOR CERTIFICATION

I hereby certify that the information contained herein is true and complete to the best of my knowledge and belief, and that this organization either owns a working interest or unleased mineral interest in the land including the proposed bottom hole location or has a right to drill this well at this location pursuant to a contract with an owner of such a mineral or working interest, or to a voluntary pooling agreement or a compulsory pooling order heretofore entered by the division.

Signature: Jackie Lathan  
Date: 1/14/16  
Printed Name: Jackie Lathan

E-mail Address

### <sup>18</sup> SURVEYOR CERTIFICATION

I hereby certify that the well location shown on this plat was plotted from field notes of actual surveys made by me or under my supervision, and that the same is true and correct to the best of my belief.

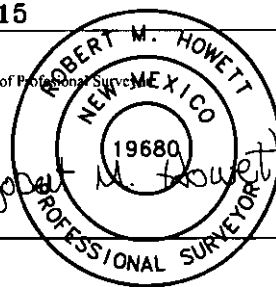
9-1-2015

Date of Survey

Signature and Seal of Professional Surveyor

19680

Certificate Number



RRC - Firm No.: TX 10193838 NM 4655451 - Job No.: LS1508500



COMPANY: Mewbourne Oil Company  
 WELL: Sterling Pound 20-29 W2DE State Corn #1H  
 COUNTY: Eddy County, New Mexico  
 DATUM: NAD 1927 (NADCON CONUS)  
 RIG: Patterson Patterson 220



GRID CORRECTION: To convert a Magnetic Direction to a Grid Direction, Add 7.38°

OFFICE: 936.582.7296

GEODETTIC ZONE: New Mexico East 3001 3185 + 25 @ 3210.0usft (Patterson 220) GROUND ELEVATION: 3185.0										
+N/-S 0.0	+E/-W 0.0	Northing 471804.90	Easting 535672.90	Latitude 32° 17' 49.400 N	Longitude 104° 13' 4.382 W	Slot				
PLAN SECTIONS										
Sec	MD	Inc	Azi	TVD	+N/-S	+E/-W	Dleg	TFace	VSeet	Target
1	9111.0	1.33	154.05	9107.9	-47.4	-3.1	0.00	0.00	47.4	
2	9300.2	1.33	154.05	9297.1	-51.4	-1.2	0.00	0.00	51.4	
3	10186.6	89.83	179.96	9858.0	-622.5	4.9	10.00	25.92	622.5	
4	17010.3	89.83	179.96	9878.0	-7446.2	9.7	0.00	0.00	7446.2	PBHL Sterling Pound 20-29 W2DE st Corn #1H

SHL 150' FNL; 710' FWL  
 Section 20-23S-27E  
 PBHL 2310' FNL; 710 FWL  
 Section 29-23S-27E

