

UNITED STATES
DEPARTMENT OF THE INTERIOR
BUREAU OF LAND MANAGEMENT

OCD-ARTESIA

FORM APPROVED
OMB NO. 1004-0135
Expires: July 31, 2010**SUNDRY NOTICES AND REPORTS ON WELLS**
*Do not use this form for proposals to drill or to re-enter an abandoned well. Use form 3160-3 (APD) for such proposals.***SUBMIT IN TRIPLICATE - Other instructions on reverse side.**

1. Type of Well <input type="checkbox"/> Oil Well <input type="checkbox"/> Gas Well <input checked="" type="checkbox"/> Other: INJECTION		5. Lease Serial No. NMNM0553785A
2. Name of Operator BASIC ENERGY SERVICES Contact: DAVID ALVARADO E-Mail: DAVID.ALVARADO@BASICENERGYSERVICES.COM		6. If Indian, Allottee or Tribe Name
3a. Address MIDLAND, TX 79702	3b. Phone No. (include area code) Ph: 575-746-2072 Fx: 575-746-2435	7. If Unit or CA/Agreement, Name and/or No.
4. Location of Well (Footage, Sec., T., R., M., or Survey Description) Sec 21 T21S R27E NENW 660FNL 1980FWL		8. Well Name and No. MYRTLE MYRA WIW 1
		9. API Well No. 30-015-21515-00-S1
		10. Field and Pool, or Exploratory UNKNOWN
		11. County or Parish, and State EDDY COUNTY, NM

12. CHECK APPROPRIATE BOX(ES) TO INDICATE NATURE OF NOTICE, REPORT, OR OTHER DATA

TYPE OF SUBMISSION	TYPE OF ACTION			
<input type="checkbox"/> Notice of Intent	<input type="checkbox"/> Acidize	<input type="checkbox"/> Deepen	<input type="checkbox"/> Production (Start/Resume)	<input type="checkbox"/> Water Shut-Off
<input checked="" type="checkbox"/> Subsequent Report	<input type="checkbox"/> Alter Casing	<input type="checkbox"/> Fracture Treat	<input type="checkbox"/> Reclamation	<input type="checkbox"/> Well Integrity
<input type="checkbox"/> Final Abandonment Notice	<input checked="" type="checkbox"/> Casing Repair	<input type="checkbox"/> New Construction	<input type="checkbox"/> Recomplete	<input type="checkbox"/> Other
	<input type="checkbox"/> Change Plans	<input type="checkbox"/> Plug and Abandon	<input type="checkbox"/> Temporarily Abandon	
	<input type="checkbox"/> Convert to Injection	<input type="checkbox"/> Plug Back	<input type="checkbox"/> Water Disposal	

13. Describe Proposed or Completed Operation (clearly state all pertinent details, including estimated starting date of any proposed work and approximate duration thereof. If the proposal is to deepen directionally or recompleat horizontally, give subsurface locations and measured and true vertical depths of all pertinent markers and zones. Attach the Bond under which the work will be performed or provide the Bond No. on file with BLM/BIA. Required subsequent reports shall be filed within 30 days following completion of the involved operations. If the operation results in a multiple completion or recompleat in a new interval, a Form 3160-4 shall be filed once testing has been completed. Final Abandonment Notices shall be filed only after all requirements, including reclamation, have been completed, and the operator has determined that the site is ready for final inspection.)

SEE ATTACHMENTS

NM OIL CONSERVATION
ARTESIA DISTRICT
FEB 17 2016

RECEIVED

ORD 2/26/16
Accepted for record
RECEIVEDSUBJECT TO LIKE
APPROVAL BY STATE

14. I hereby certify that the foregoing is true and correct. Electronic Submission #326000 verified by the BLM Well Information System For BASIC ENERGY SERVICES, sent to the Carlsbad Committed to AFMSS for processing by JAMIE RHOADES on 12/10/2015 (15PRS0054S)	
Name (Printed/Typed) DAVID ALVARADO	Title F/S MANAGER
Signature (Electronic Submission)	Date 12/10/2015
THIS SPACE FOR FEDERAL OR STATE OFFICE USE	
Approved By	Title
Conditions of approval, if any, are attached. Approval of this notice does not warrant or certify that the applicant holds legal or equitable title to those rights in the subject lease which would entitle the applicant to conduct operations thereon.	Office
Title 18 U.S.C. Section 1001 and Title 43 U.S.C. Section 1212, make it a crime for any person knowingly and willfully to make to any department or agency of the United States any false, fictitious or fraudulent statements or representations as to any matter within its jurisdiction.	

ACCEPTED FOR RECORD

JAN 26 2016

BUREAU OF LAND MANAGEMENT
CARLSBAD FIELD OFFICE

** BLM REVISED ** BLM REVISED ** BLM REVISED ** BLM REVISED ** BLM REVISED **

Basic Energy Services
Recreation of Well bore design for the Myrtle Myra #1 SWD
 API # 2001521515, 660' ENL, 1380' FWL, Sec 2L, T21S, R27E
 7/16/2015

KB: 8'

Tree Connection: 5 1/2 X 8 5/8 X 2 7/8 Larken R
 Production String: 5 1/2 J-55 17#
 Set Depth: 3050
 Cementing Data: Circulated as per Raft record

Surface Hole
 Bit Size: 17 1/2"

Surface Casing: 13 3/8 48# H-40
 Setting Depth @ 400'
 Cementing Data: Lead - 450 sxs Cl C
 Tail -
 Note: Circulated

Intermediate Hole
 Bit Size: 12 - 1/4"

Intermediate Casing: 9 5/8" 32#, 36#
 Setting Depth @ 3000'
 Cementing Data: 1000 sxs Circulated

Cement Data:
 Lead - OH 3050' - 5050'
 Tail -
 Note -

Bit Size: 8 3/4"



2-7/8" IPC J-55 EUE 8rd Injection Tubing wt @ 2924.9
 Top New Packer wt @ 2,924.9

Open hole below the 5-1/2" casing
 Injection Interval: 3,002' to 5,050'

PB Depth @ 7,150'
 PATD @ 11,550'

Basic Energy Services L.P.

Myrtle Myra Federal # 1

API 30-015-21515

660' FNL 1980' FWL

SEC21, T21S R27E

All aspects of this job will be done in a closed loop system

6-18-15 Move in Equipment, RU Service Unit, Kill well with 10# brine, ND well head, NU BOP, released Pkr. / TOH with tubular and Pkr. RU Hydro testers TIH with Tbg. testing at 3000 psi found 13 joints with bad pins. Two- Jnt. 52, 53 with hole in tbg. Replaced bad tbg. Circulated 3% Pkr fluid loss of integrity called BLM Paul Schwartz on find 4 BPM @ 450 psi. TOH with Pkr. Stand production pipe in derrick. Call in for working string, test packer and RBP. SDFN All aspects of this job will be done in a closed loop system

6-19-15 Open BOP well still balanced TIH with Bit & Scraper to 3000 ft. TOH with B/S, TIH w/ RBP and Test Pkr. Set RBP 2978.56 (RBP would not set below 2978.56) test RBP with Pkr. Set @2,946.06 Tested Good at 800 psi. Worked out of the hole and found loss of integrity between 1620'-1716' call in for Cmt. and Equipment SDFN.

6-24-15 Move in PP Equipment NU to tbg AD-1 PKR set @ 1300' mixed 100 Sxs Thix-o-tropic 50/Poz , 200 Sxs 2% CaCl₂ Class C displaced tbg. SDF 5 hours TOH w/Pkr TIH with Bit, DC, and tbg. Tag top of Cmt. at 1684.96 WOC 24 hours SDFN

6-25-15 Drilled out to 1720' closed BOP tested loss of integrity 2BPM TOH with DC, Bit TIH w/AD-1 set at 1300' Mixed 100Sxs Thix-o-tropic w/ fluid loss and 200Sxs of 3% CaCl₂ Class C WOC 5 hours TOH W/Pkr. TIH with DC, Bit tag top of Cmt. at 1481.5 WOC 24 Hours SDFN

6-26-15 Drilled out to 1730' Closed BOP Tested Integrity Loss of ½ BPM TOH w/B/DC TIH w/PKR to 1300' set RU PP Mixed 100 Sxs Thix-o-Tropic w/ friction reducer and 200Sxs 3% CaCl₂ Class-C displaced Cmt. Squeezed locked down with 760 psi WOC Over weekend SDFN

6-29-15 Released Pkr. TOH w/Pkr. TIH w/ Bit / DC Tag TOC at 1481.5 Drilled out squeeze. Closed BOP and test loss of integrity of .25 BPM tested Casing from 0-1654 tested good 1000# Psi leak at around 1665' / TOH with Bit / DC TIH with AD-1 to 1512' left hanging Call in for 50 Sxs 3% CaCl₂ Class-C SDFN

6-30-15 PP was not able to make it due to equipment brake down SDFN

Basic Energy Services L.P.

Myrtle Myra Federal # 1

API 30-015-21515

660' FNL 1980' FWL

SEC21, T21S R27E

Continuance of job

7-1-15 TIH to 1700' Mixed 50 Sxs 3% CaCl₂ Class –C string up the face of the casing set packer @ 1512 displaced cmt with 490 psi on squeeze WOC 5 hours psi went to Zero Trip out of hole with Pkr. TIH w/ Bit/DC TOC at 1597.5 ft. WOC 24 hours SDFN

7-2-15 Drilled out Squeeze at 1827.21 TOH with Bit /DC stood back in Derrick secured well SDF holidays 4th of July 2015

7-6-15 Drilled out squeeze tested to 1000# psi bleed off to 800 # psi in 15 min called in for 25 Sxs Class –C 1.32 yield String slurry up to face of casing from 1700 ft to 1300 ft laid down 12 joints displaced down annulus at .25 BPM Squeezed at 1050 psi continue to maintain psi every 20 min until locked down with 1020 psi closed annulus secured well WOC SDFN

7-7-15 Drilled out Squeeze TOP Cmt. @1528.19 tested well leaked off 10# per 5min called in for cmt, 30 Sxs Poz light 2.21 yield for next day. SDFN

7-8-15 TIH with open end tbg. to 1702 ft / NU PP Equipment Mixed 30 Sxs Poz light 2.21 yield string slurry up face of Csg. TOH with tbg closed BOP and displaced down annulus Continued squeeze with 1500 allowing to take slurry to 1000 psi continued to squeeze increased psi to 1700 # and held psi locked down at 6:00 pm with 1500# psi. shut down until 13th WOC. SDFN

7-13-15 TIH with Bit and DC TOC at 1235 drilled out Squeeze tested casing to 700 psi had 6 % loss in one hour released PSI TOH with Bit and DC laid them down on rack . SDFN

7-14-15 RU wire line and ran CBL / TIH with retrieving tool and washed over RBP for two hours released RBP well has 250 PSI called in for 10# brine to balance well bleed back to reverse pit still to high of psi to balance well. NU annulus and flowed well over night to facility died down in 2 hours to zero.

Basic Energy Services L.P.

Myrtle Myra Federal # 1

API 30-015-21515

660' FNL 1980' FWL

SEC21, T21S R27E

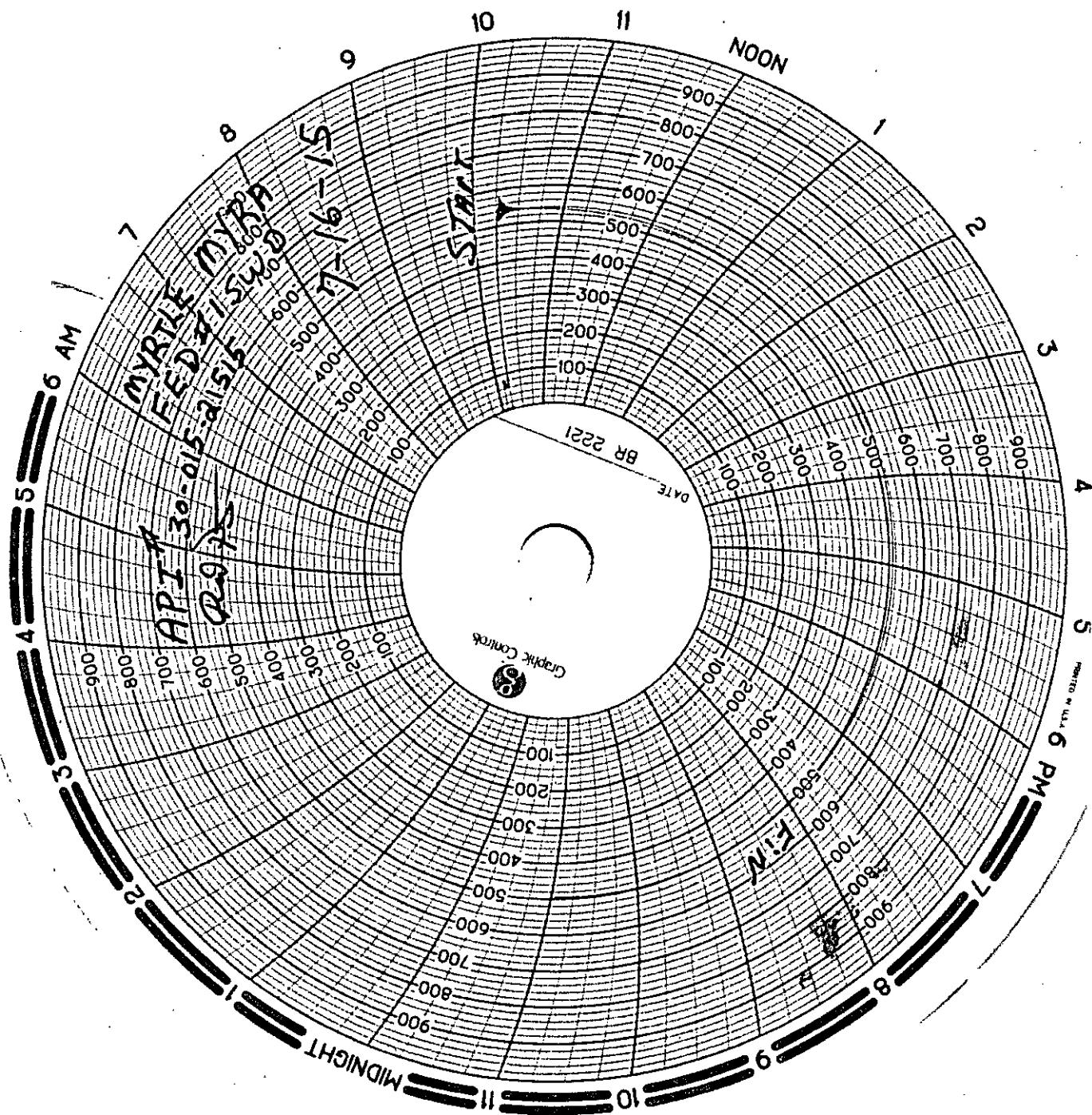
Continuance of job

7-15-15 Pumped 10 # Brine down tubing and balanced well TOH with tubing laid down working string on rack released working string. TIH with tbg 2 7/8 J-55 IPC tbg. / With Redressed PKR. Set Top at 2924.9 ft circulated 3% packer fluid around set packer ND BOP and NU well head hung well with 22 points in tension. Call for MIT State of New Mexico OCD Richard Inge gave us the green light to run MIT.

7-16-15 MIT well at 540 psi for little over 30 min ended with 500 psi Good

7-17-15 NU injection line, cleaned location, released all equipment, placed back to injection.

***Please accept this Subsequence Sundry notice with the well diagram, chart,
Chart Calibration Certificate on recorder # A-483 and CBL***



**416 East Main Street
P.O. Box 1836
Artesia, New Mexico 88211
Office: (575)746-3481
Toll Free: 1-888-421-9453**

Company Name: Basic Energy
Recorder Type: Bristol
Recorder Serial # A-483

Increasing Pressure			Decreasing Pressure		
Applied Pressure	Indicated Pressure	Error%	Applied Pressure	Indicated Pressure	Error%
0.0#	0.0#	0	800#	800#	0
100#	100#	0	600#	600#	0
300#	300#	0	400#	400#	0
500#	500#	0	200#	200#	0
700#	700#	0	0.0#	0.0#	0
1000#	1000#	0			

[illegible]

Gauge: Crystal
Deadweight: _____

Calibration Date: 5/18/2015

Technician: Jonnie Aldrich Jonnie Aldrich

Operator: Basic Energy Services, LP
 Surface Lease: NM0553785A
 Producing Lse No: NM0553785A
 Unit or CA No: N. A.

Subsurface Concerns for Casing Designs: , , , ,

Well Status: WDW

O.O.2.III.B.h. MIT: #N/A

NMOCD Max Inj psig: 1,356

Last WK inspc: 4/26/2011

Inspc Tbg psig: 800

ROW: NM84563

Well: Myrtle Myra #001

API: 3001521515

@ Srfce: T21S-R27E, Sec 21, 660FNL & 1980FWL

@ MTD: N. A.

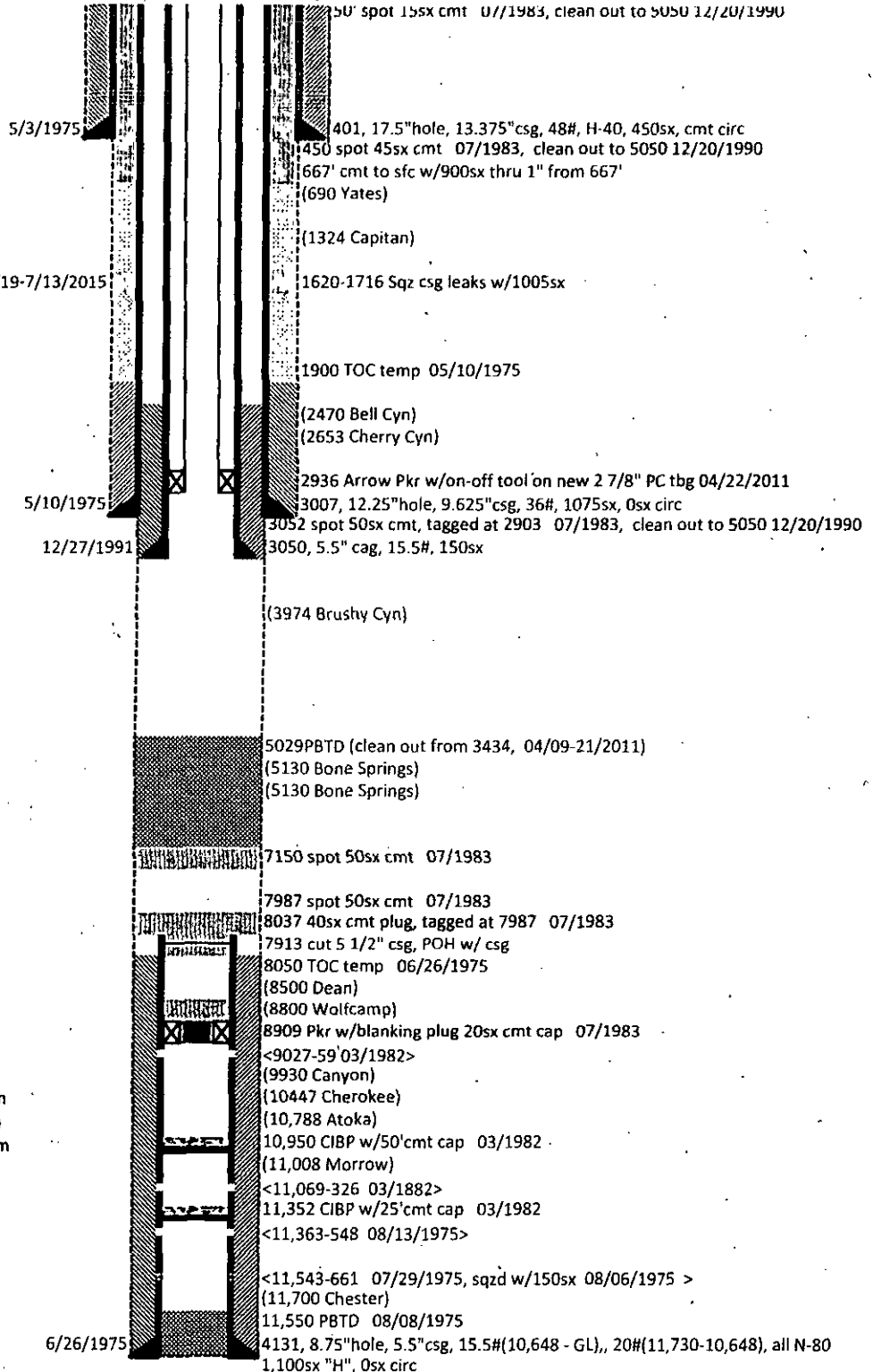
estate: fed/led

KB: 3255

GL: 3236

Spud date: 5/2/1975

Corr: 19



12/31/1990 convert to injector
 01/07/1991 MIT held 500psig 30m
 09/28/2005 failed MIT
 10/13/2005 MIT held 490 to 495psig 30m
 11/26/2009 MIT held 760 to 770psig 30m
 04/26/2011 MIT held 500 to 495psig 45m