

15-43464



COMPANY: Mewbourne Oil Company
 WELL: Yardbirds 34 W2OB Fee #1H
 COUNTY: Eddy County, New Mexico
 DATUM: NAD 1927 (NADCON CONUS)
 RIG: Patterson 250



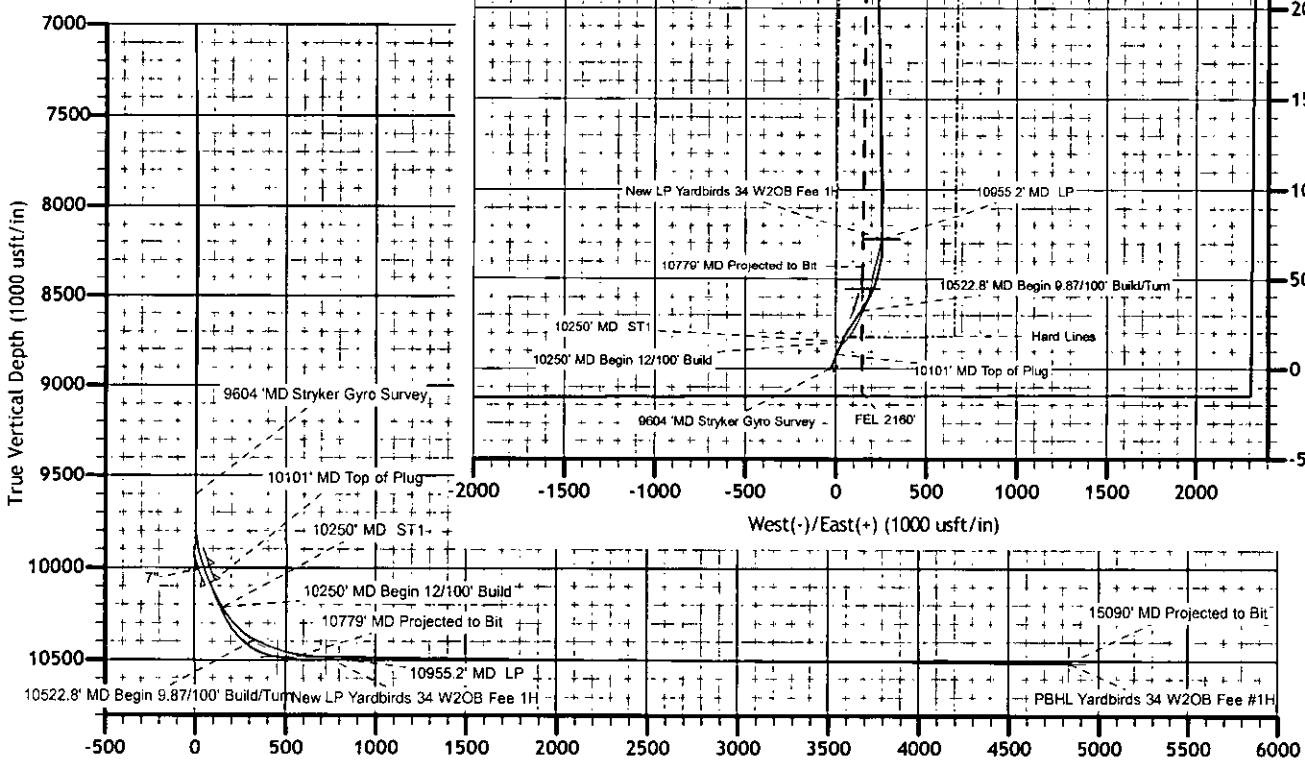
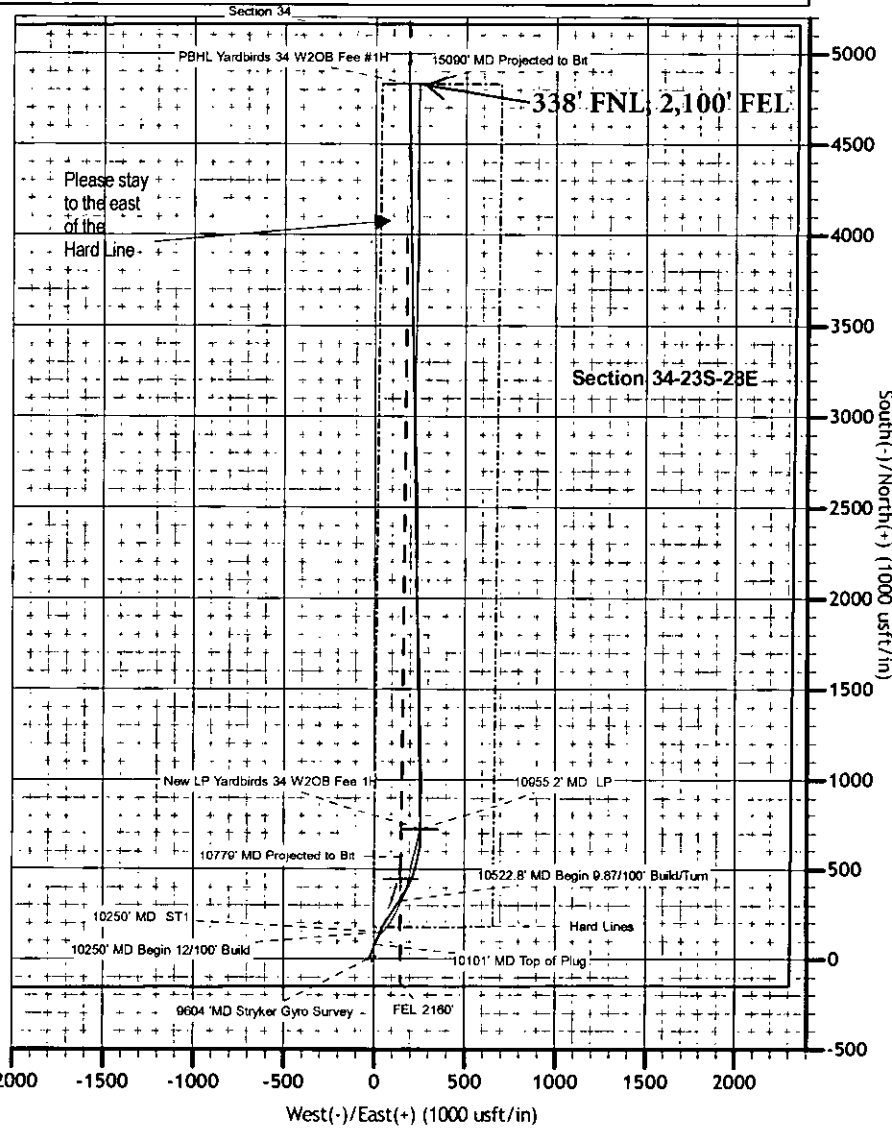
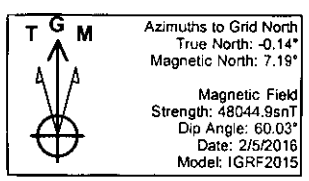
GRID CORRECTION: To convert a Magnetic Direction to a Grid Direction, Add 7.20°

OFFICE: 936.582.7294

GEODETTIC ZONE: New Mexico East 3001						
3025 +27 @ 3052.0usft (Patterson 250)						
GROUND ELEVATION: 3025.0						
+N/-S	+E/-W	Northing	Eastng	Latitude	Longitude	Slot
0.0	0.0	456418.40	580296.30	32° 15' 16.359 N	104° 4' 24.920 W	

PLAN SECTIONS										
Sec	MD	Inc	Azi	TVD	+N/-S	+E/-W	Dieg	TFace	VSEct	Target
1	10250.0	33.85	24.37	10215.0	149.9	37.9	0.00	0.00	151.3	
2	10522.8	65.56	35.47	10389.5	325.1	144.2	12.00	18.91	330.4	
3	10955.2	89.57	358.98	10485.0	720.0	260.0	9.87	-61.29	729.5	New LP Yardbirds 34 W2OB Fee 1H
4	15067.7	89.57	358.98	10516.0	4831.7	187.0	0.00	0.00	4835.3	PBHL Yardbirds 34 W2OB Fee #1H

SHL- 150' FSL ; 2310' FEL
 Section 34-23S-28E
 PBHL- 330' FNL ; 2160' FEL
 Section34-23S-28E



Vertical Section at 2.22° (1000 usft/in)