

District I
1625 N. French Dr., Hobbs, NM 88240
Phone: (575) 393-6161 Fax: (575) 393-0720
District II
811 S. First St., Artesia, NM 88210
Phone: (575) 748-1283 Fax: (575) 748-9720
District III
1000 Rio Brazos Road, Aztec, NM 87410
Phone: (505) 334-6178 Fax: (505) 334-6170
District IV
1220 S. St. Francis Dr., Santa Fe, NM 87505
Phone: (505) 476-3460 Fax: (505) 476-3462

State of New Mexico
Energy, Minerals & Natural Resources
Department
OIL CONSERVATION DIVISION
1220 South St. Francis Dr.
Santa Fe, NM 87505

NM OIL CONSERVATION
ARTESIA DISTRICT

JUN 29 2016
Revised August 1, 2011

Submit one copy to appropriate
District Office

☐ AMENDED REPORT

WELL LOCATION AND ACREAGE DEDICATION PLAT

| | | | |
|---|---|--|--|
| ¹ API Number 30-015-43018 | | ² Pool Code 50373 | ³ Pool Name PIERCE CROSSING;WOLFCAMP |
| ⁴ Property Code 314392 | ⁵ Property Name PAUL 25 24S 28E RB | | ⁶ Well Number #221H |
| ⁷ OGRID No. 228937 | ⁸ Operator Name MATADOR PRODUCTION COMPANY | | ⁹ Elevation 2920' |

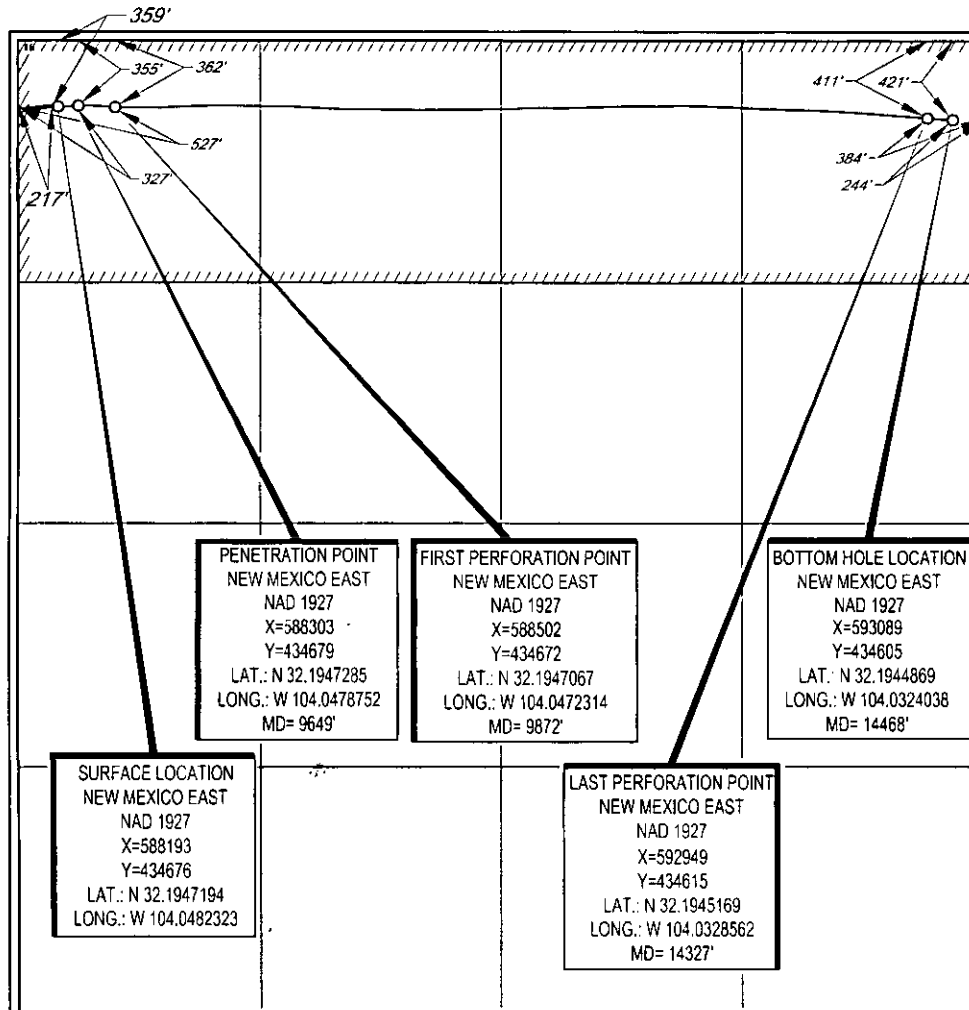
¹⁰Surface Location

| UL or lot no. | Section | Township | Range | Lot Idn | Feet from the | North/South line | Feet from the | East/West line | County |
|---------------|-----------|-------------|-------------|----------|---------------|------------------|---------------|----------------|-------------|
| D | 25 | 24-S | 28-E | - | 359' | NORTH | 217' | WEST | EDDY |

| UL or lot no. | Section | Township | Range | Lot Idn | Feet from the | North/South line | Feet from the | East/West line | County |
|---------------|-----------|-------------|-------------|----------|---------------|------------------|---------------|----------------|-------------|
| A | 25 | 24-S | 28-E | - | 421' | NORTH | 244' | EAST | EDDY |

| | | | |
|---|-------------------------------|----------------------------------|-------------------------|
| ¹² Dedicated Acres 160 | ¹³ Joint or Infill | ¹⁴ Consolidation Code | ¹⁵ Order No. |
|---|-------------------------------|----------------------------------|-------------------------|

No allowable will be assigned to this completion until all interests have been consolidated or a non-standard unit has been approved by the division.



¹⁷OPERATOR CERTIFICATION
I hereby certify that the information contained herein is true and complete to the best of my knowledge and belief, and that this organization either owns a working interest or unleased mineral interest in the land including the proposed bottom hole location or has a right to drill this well at this location pursuant to a contract with an owner of such a mineral or working interest, or in a voluntary pooling agreement or a compulsory pooling order heretofore entered by the division.

Chris Carleton
Signature
05/25/2016
Date

Chris Carleton
Printed Name

ccarleton@matadorresources.com
E-mail Address

¹⁸SURVEYOR CERTIFICATION
I hereby certify that the well location shown on this plat was plotted from field notes of actual surveys made by me or under my supervision, and that the same is true to the best of my belief.

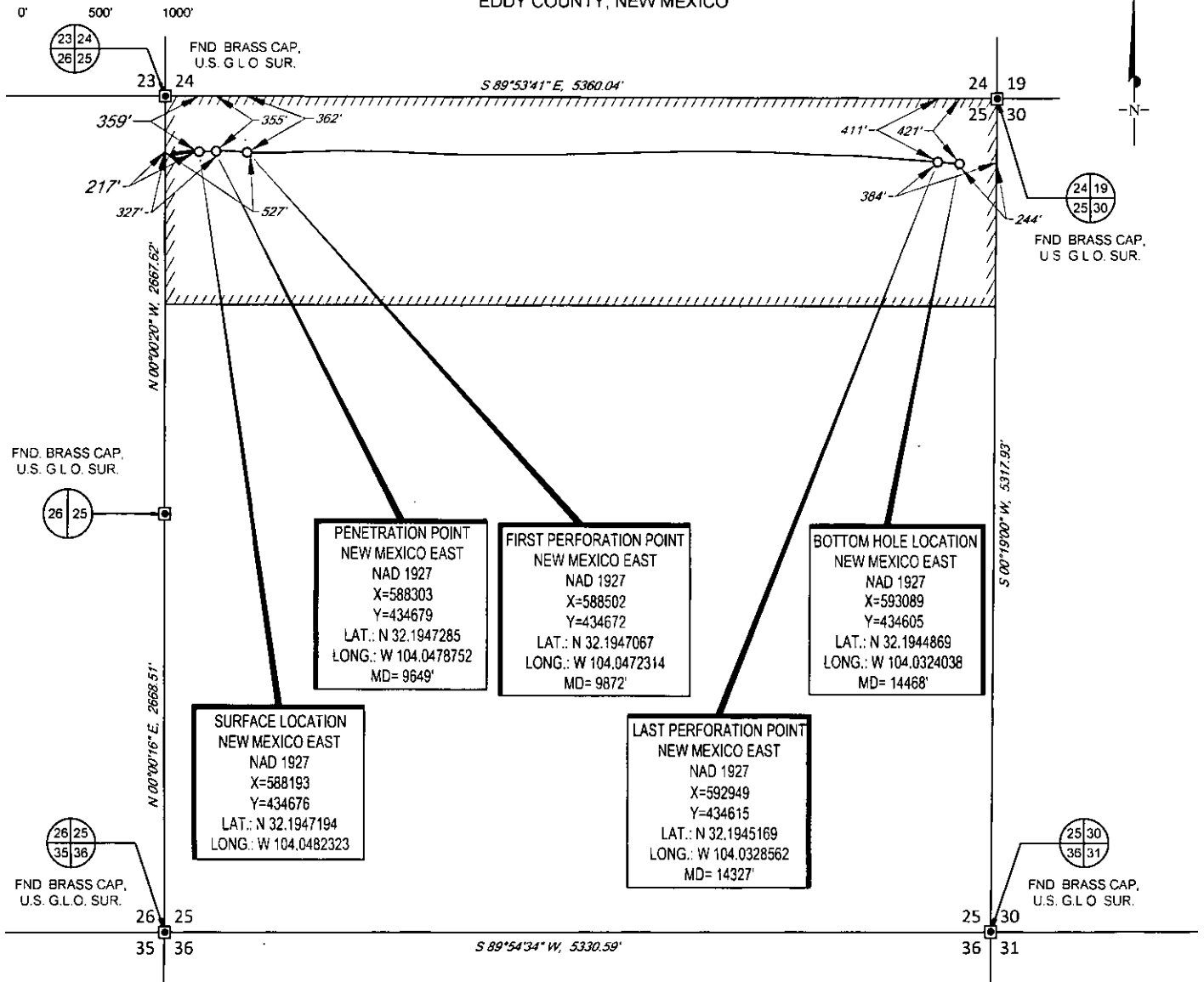
02/26/2015
Date of Survey

Signature and Seal of Professional Surveyor

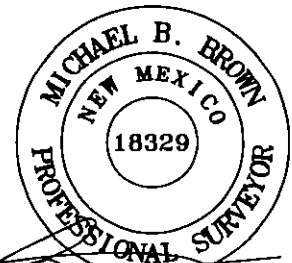
Michael D. Brown
MICHAEL D. BROWN
NEW MEXICO
PROFESSIONAL SURVEYOR
18329
Certificate Number

SCALE: 1" = 1000'

SECTION 25, TOWNSHIP 24-S, RANGE 28-E, N.M.P.M.
EDDY COUNTY, NEW MEXICO



LEASE NAME & WELL NO.: PAUL 25 24S 28E RB #221H
SECTION 25 TWP. 24-S RGE. 28-E SURVEY N.M.P.M.
COUNTY EDDY STATE NM ELEVATION 2920'
DESCRIPTION 359' FNL & 217' FWL



Michael Blake Brown, P.S. No. 18329
MAY 23, 2016



TOPOGRAPHIC
LOYALTY INNOVATION LEGACY
1400 EVERMAN PARKWAY, Ste. 197 - FT. WORTH, TEXAS 76140
TELEPHONE: (817) 744-7512 - FAX (817) 744-7548
2903 NORTH BIG SPRING - MIDLAND, TEXAS 79705
TELEPHONE: (432) 682-1653 OR (800) 767-1653 - FAX (432) 682-1743
WWW.TOPOGRAPHIC.COM

| PAUL 25 24S 28E RB #221H AS-COMPLETED | REVISION: | |
|--|-----------|--|
| | | |
| DATE: 05/23/16 | | |
| FILE: AD_PAUL_25-24S-28E_RB_221H | | |
| DRAWN BY: GJU | | |
| SHEET: 1 OF 1 | | |

NOTES

1. ORIGINAL DOCUMENT SIZE: 8.5" X 11"
2. ALL BEARINGS, DISTANCES, AND COORDINATE VALUES CONTAINED HEREIN ARE GRID BASED UPON THE NEW MEXICO STATE PLANE COORDINATE SYSTEM, EAST ZONE, U.S. SURVEY FEET, NORTH AMERICAN DATUM 1927.
3. CERTIFICATION IS MADE ONLY TO THE LOCATION OF THIS EASEMENT, IN RELATION TO THE EVIDENCE FOUND DURING A FIELD SURVEY, MADE ON THE GROUND, UNDER MY SUPERVISION, AND USING DOCUMENTATION PROVIDED BY MATADOR PRODUCTION COMPANY. ONLY UTILITIES/EASEMENTS THAT WERE VISIBLE ON THE DATE OF THIS SURVEY, WITHIN/ADJOINING THIS EASEMENT, HAVE BEEN LOCATED AS SHOWN HEREON OF WHICH I HAVE KNOWLEDGE. THIS CERTIFICATION IS LIMITED TO THOSE PERSONS OR ENTITIES SHOWN ON THE FACE OF THIS PLAT AND IS NON-TRANSFERABLE, AND MADE FOR THIS TRANSACTION ONLY.