

NM OIL CONSERVATION

ARTESIA DISTRICT

AUG 03 2016

RECEIVED

15-43661

# Mewbourne Oil Company .

Eddy County, New Mexico

Section 6-25S-28E Devon 6 W2AD Fee 1H

Devon 6 W2AD Fee #1H

Original Hole (Sidetrack)

Design: Original Hole (Sidetrack)

## Standard Survey Report

02 May, 2016

Provide signature page for survey

## Stryker Directional Survey Report

<b>Company:</b> Mewbourne Oil Company	<b>Local Co-ordinate Reference:</b> Well Devon 6 W2AD Fee #1H
<b>Project:</b> Eddy County, New Mexico	<b>TVD Reference:</b> 3043 + 27 @ 3070.0usft (Patterson 220)
<b>Site:</b> Section 6-25S-28E Devon 6 W2AD Fee 1H	<b>MD Reference:</b> 3043 + 27 @ 3070.0usft (Patterson 220)
<b>Well:</b> Devon 6 W2AD Fee #1H	<b>North Reference:</b> Grid
<b>Wellbore:</b> Original Hole (Sidetrack)	<b>Survey Calculation Method:</b> Minimum Curvature
<b>Design:</b> Original Hole (Sidetrack)	<b>Database:</b> Stryker_EDM

<b>Project</b> Eddy County, New Mexico
<b>Map System:</b> US State Plane 1927 (Exact solution) <b>System Datum:</b> Mean Sea Level
<b>Geo Datum:</b> NAD 1927 (NADCON CONUS)
<b>Map Zone:</b> New Mexico East 3001

<b>Site</b> Section 6-25S-28E Devon 6 W2AD Fee 1H					
<b>Site Position:</b>	<b>Northing:</b>	423,880.70 usft	<b>Latitude:</b>	32° 9' 54.656 N	
<b>From:</b> Map	<b>Easting:</b>	566,528.10 usft	<b>Longitude:</b>	104° 7' 6.012 W	
<b>Position Uncertainty:</b> 0.0 usft	<b>Slot Radius:</b>	13-3/16 "	<b>Grid Convergence:</b>	0.11 °	

<b>Well</b> Devon 6 W2AD Fee #1H						
<b>Well Position</b>	<b>+N/-S</b>	0.0 usft	<b>Northing:</b>	423,880.70 usft	<b>Latitude:</b>	32° 9' 54.656 N
	<b>+E/-W</b>	0.0 usft	<b>Easting:</b>	566,528.10 usft	<b>Longitude:</b>	104° 7' 6.012 W
<b>Position Uncertainty</b>		0.0 usft	<b>Wellhead Elevation:</b>	27.0 usft	<b>Ground Level:</b>	3,043.0 usft

<b>Wellbore</b> Original Hole (Sidetrack)					
<b>Magnetics</b>	<b>Model Name</b>	<b>Sample Date</b>	<b>Declination (°)</b>	<b>Dip Angle (°)</b>	<b>Field Strength (nT)</b>
	IGRF2015	3/14/2016	7.34	59.93	47,976

<b>Design</b> Original Hole (Sidetrack)					
<b>Audit Notes:</b>					
<b>Version:</b>	1.0	<b>Phase:</b>	ACTUAL	<b>Tie On Depth:</b>	0.0
<b>Vertical Section:</b>	<b>Depth From (TVD) (usft)</b>	<b>+N/-S (usft)</b>	<b>+E/-W (usft)</b>	<b>Direction (°)</b>	
	0.0	0.0	0.0	189.63	

<b>Survey Program</b> Date 5/2/2016					
<b>From (usft)</b>	<b>To (usft)</b>	<b>Survey (Wellbore)</b>	<b>Tool Name</b>	<b>Description</b>	
100.0	9,594.0	Stryker Gyro Survey Original Hole	SRG-GYRO-MS	surface readout gyro multishot	
9,712.0	11,329.0	MWD Survey Original Hole	MWD	MWD v3:standard declination	
10,949.0	14,674.0	Stk#1 (Sidetrack)	MWD	MWD v3:standard declination	

<b>Survey</b>										
<b>Measured Depth (usft)</b>	<b>Inclination (°)</b>	<b>Azimuth (°)</b>	<b>Vertical Depth (usft)</b>	<b>+N/-S (usft)</b>	<b>+E/-W (usft)</b>	<b>Vertical Section (usft)</b>	<b>Dogleg Rate (°/100usft)</b>	<b>Build Rate (°/100usft)</b>	<b>Turn Rate (°/100usft)</b>	
0.0	0.00	0.00	0.0	0.0	0.0	0.0	0.00	0.00	0.00	
100.0	0.03	30.68	100.0	0.0	0.0	0.0	0.03	0.03	0.00	
200.0	0.17	2.38	200.0	0.2	0.0	-0.2	0.14	0.14	-28.30	
300.0	0.25	6.11	300.0	0.6	0.1	-0.6	0.08	0.08	3.73	
400.0	0.45	137.70	400.0	0.5	0.3	-0.5	0.64	0.20	131.59	
500.0	1.06	132.84	500.0	-0.4	1.3	0.2	0.61	0.61	-4.86	
600.0	1.20	144.29	600.0	-1.9	2.6	1.5	0.26	0.14	11.45	
700.0	1.09	135.78	699.9	-3.4	3.9	2.8	0.20	-0.11	-8.51	
800.0	1.11	131.18	799.9	-4.8	5.2	3.8	0.09	0.02	-4.60	

## Stryker Directional Survey Report

<b>Company:</b>	Mewbourne Oil Company	<b>Local Co-ordinate Reference:</b>	Well Devon 6 W2AD Fee #1H
<b>Project:</b>	Eddy County, New Mexico	<b>TVD Reference:</b>	3043 + 27 @ 3070.0usft (Patterson 220)
<b>Site:</b>	Section 6-25S-28E Devon 6 W2AD Fee 1H	<b>MD Reference:</b>	3043 + 27 @ 3070.0usft (Patterson 220)
<b>Well:</b>	Devon 6 W2AD Fee #1H	<b>North Reference:</b>	Grid
<b>Wellbore:</b>	Original Hole (Sidetrack)	<b>Survey Calculation Method:</b>	Minimum Curvature
<b>Design:</b>	Original Hole (Sidetrack)	<b>Database:</b>	Stryker_EDM

Survey										
Measured Depth (usft)	Inclination (°)	Azimuth (°)	Vertical Depth (usft)	+N/-S (usft)	+E/-W (usft)	Vertical Section (usft)	Dogleg Rate (°/100usft)	Build Rate (°/100usft)	Turn Rate (°/100usft)	
900.0	0.98	142.83	899.9	-6.1	6.5	4.9	0.25	-0.13	11.65	
1,000.0	0.77	134.25	999.9	-7.2	7.5	5.9	0.25	-0.21	-8.58	
1,100.0	0.30	134.70	1,099.9	-7.9	8.2	6.4	0.47	-0.47	0.45	
1,200.0	0.08	354.19	1,199.9	-8.0	8.3	6.5	0.37	-0.22	-140.51	
1,300.0	0.27	13.39	1,299.9	-7.7	8.4	6.2	0.20	0.19	19.20	
1,400.0	0.45	17.51	1,399.9	-7.1	8.6	5.6	0.18	0.18	4.12	
1,500.0	0.56	15.62	1,499.9	-6.3	8.8	4.7	0.11	0.11	-1.89	
1,600.0	0.61	6.88	1,599.9	-5.3	9.0	3.7	0.10	0.05	-8.74	
1,700.0	0.74	356.43	1,699.9	-4.1	9.0	2.5	0.18	0.13	-10.45	
1,800.0	0.65	32.12	1,799.9	-3.0	9.3	1.4	0.43	-0.09	35.69	
1,900.0	1.38	93.37	1,899.9	-2.5	10.8	0.7	1.21	0.73	61.25	
2,000.0	1.94	113.55	1,999.8	-3.3	13.5	1.0	0.80	0.56	20.18	
2,100.0	2.27	124.68	2,099.7	-5.1	16.7	2.2	0.52	0.33	11.13	
2,200.0	3.27	112.79	2,199.6	-7.3	21.0	3.7	1.15	1.00	-11.89	
2,300.0	4.49	100.04	2,299.4	-9.1	27.5	4.4	1.49	1.22	-12.75	
2,400.0	0.50	120.19	2,399.3	-10.0	31.7	4.6	4.02	-3.99	20.15	
2,500.0	0.11	198.16	2,499.3	-10.3	32.0	4.8	0.49	-0.39	77.97	
2,600.0	0.09	204.09	2,599.3	-10.5	32.0	5.0	0.02	-0.02	5.93	
2,700.0	0.17	216.38	2,699.3	-10.7	31.9	5.2	0.08	0.08	12.29	
2,800.0	0.12	164.76	2,799.3	-10.9	31.8	5.4	0.13	-0.05	-51.62	
2,900.0	0.07	165.11	2,899.3	-11.1	31.9	5.6	0.05	-0.05	0.35	
3,000.0	0.10	41.30	2,999.3	-11.1	31.9	5.6	0.15	0.03	-123.81	
3,100.0	0.09	337.67	3,099.3	-10.9	32.0	5.4	0.10	-0.01	-63.63	
3,200.0	0.16	319.43	3,199.3	-10.7	31.8	5.3	0.08	0.07	-18.24	
3,300.0	0.25	272.36	3,299.3	-10.6	31.5	5.2	0.18	0.09	-47.07	
3,400.0	0.33	188.19	3,399.3	-10.9	31.3	5.5	0.39	0.08	-84.17	
3,500.0	0.45	229.03	3,499.3	-11.4	30.9	6.1	0.29	0.12	40.84	
3,600.0	0.49	232.56	3,599.3	-12.0	30.3	6.7	0.05	0.04	3.53	
3,700.0	0.50	237.07	3,699.3	-12.5	29.6	7.3	0.04	0.01	4.51	
3,800.0	0.44	240.88	3,799.3	-12.9	28.9	7.9	0.07	-0.06	3.81	
3,900.0	0.47	240.36	3,899.3	-13.3	28.2	8.4	0.03	0.03	-0.52	
4,000.0	0.39	220.29	3,999.3	-13.7	27.6	8.9	0.17	-0.08	-20.07	
4,100.0	0.37	209.22	4,099.3	-14.3	27.2	9.5	0.08	-0.02	-11.07	
4,200.0	0.38	213.30	4,199.3	-14.8	26.9	10.1	0.03	0.01	4.08	
4,300.0	0.30	221.56	4,299.3	-15.3	26.5	10.7	0.09	-0.08	8.26	
4,400.0	0.46	223.12	4,399.3	-15.8	26.1	11.2	0.16	0.16	1.56	
4,500.0	0.68	179.66	4,499.3	-16.7	25.8	12.1	0.47	0.22	-43.46	
4,600.0	0.59	172.50	4,599.2	-17.8	25.9	13.2	0.12	-0.09	-7.16	
4,700.0	0.63	169.81	4,699.2	-18.8	26.1	14.2	0.05	0.04	-2.69	
4,800.0	0.66	182.20	4,799.2	-20.0	26.1	15.3	0.14	0.03	12.39	
4,900.0	0.72	203.07	4,899.2	-21.1	25.9	16.5	0.26	0.06	20.87	
5,000.0	0.70	199.60	4,999.2	-22.3	25.4	17.7	0.05	-0.02	-3.47	
5,100.0	0.97	212.79	5,099.2	-23.6	24.7	19.1	0.33	0.27	13.19	

## Stryker Directional Survey Report

<b>Company:</b> Mewbourne Oil Company	<b>Local Co-ordinate Reference:</b> Well Devon 6 W2AD Fee #1H
<b>Project:</b> Eddy County, New Mexico	<b>TVD Reference:</b> 3043 + 27 @ 3070.0usft (Patterson 220)
<b>Site:</b> Section 6-25S-28E Devon 6 W2AD Fee 1H	<b>MD Reference:</b> 3043 + 27 @ 3070.0usft (Patterson 220)
<b>Well:</b> Devon 6 W2AD Fee #1H	<b>North Reference:</b> Grid
<b>Wellbore:</b> Original Hole (Sidetrack)	<b>Survey Calculation Method:</b> Minimum Curvature
<b>Design:</b> Original Hole (Sidetrack)	<b>Database:</b> Stryker_EDM

### Survey

Measured Depth (usft)	Inclination (°)	Azimuth (°)	Vertical Depth (usft)	+N/-S (usft)	+E/-W (usft)	Vertical Section (usft)	Dogleg Rate (°/100usft)	Build Rate (°/100usft)	Turn Rate (°/100usft)
5,200.0	0.92	219.25	5,199.2	-24.9	23.8	20.6	0.12	-0.05	6.46
5,300.0	0.90	217.12	5,299.2	-26.1	22.8	21.9	0.04	-0.02	-2.13
5,400.0	0.92	214.96	5,399.2	-27.4	21.9	23.4	0.04	0.02	-2.16
5,500.0	1.00	220.36	5,499.2	-28.7	20.8	24.8	0.12	0.08	5.40
5,600.0	1.28	210.99	5,599.1	-30.4	19.7	26.6	0.34	0.28	-9.37
5,700.0	1.36	214.71	5,699.1	-32.3	18.5	28.8	0.12	0.08	3.72
5,800.0	1.37	204.50	5,799.1	-34.4	17.3	31.0	0.24	0.01	-10.21
5,900.0	1.55	215.67	5,899.1	-36.5	16.0	33.4	0.34	0.18	11.17
6,000.0	1.45	208.11	5,999.0	-38.8	14.6	35.8	0.22	-0.10	-7.56
6,100.0	1.68	203.56	6,099.0	-41.2	13.4	38.4	0.26	0.23	-4.55
6,200.0	3.12	211.02	6,198.9	-44.9	11.4	42.3	1.47	1.44	7.46
6,300.0	2.40	198.12	6,298.8	-49.2	9.4	47.0	0.95	-0.72	-12.90
6,400.0	1.95	183.93	6,398.7	-52.9	8.6	50.7	0.70	-0.45	-14.19
6,500.0	2.10	193.71	6,498.6	-56.4	8.1	54.2	0.38	0.15	9.78
6,600.0	2.27	177.45	6,598.6	-60.1	7.7	58.0	0.64	0.17	-16.26
6,700.0	3.15	198.68	6,698.5	-64.7	6.9	62.7	1.32	0.88	21.23
6,800.0	3.72	229.41	6,798.3	-69.4	3.6	67.9	1.90	0.57	30.73
6,900.0	3.11	230.64	6,898.1	-73.3	-1.0	72.4	0.61	-0.61	1.23
7,000.0	2.20	221.34	6,998.0	-76.4	-4.3	76.1	1.00	-0.91	-9.30
7,100.0	1.46	224.01	7,097.9	-78.8	-6.5	78.8	0.74	-0.74	2.67
7,200.0	1.22	217.81	7,197.9	-80.5	-8.0	80.8	0.28	-0.24	-6.20
7,300.0	1.08	254.24	7,297.9	-81.6	-9.6	82.1	0.73	-0.14	36.43
7,400.0	0.66	189.69	7,397.9	-82.5	-10.6	83.1	0.99	-0.42	-64.55
7,500.0	0.84	151.62	7,497.9	-83.7	-10.3	84.2	0.52	0.18	-38.07
7,600.0	1.76	126.62	7,597.9	-85.2	-8.8	85.5	1.06	0.92	-25.00
7,700.0	3.26	119.55	7,697.8	-87.6	-5.1	87.2	1.53	1.50	-7.07
7,800.0	3.44	129.44	7,797.6	-90.9	-0.3	89.6	0.60	0.18	9.89
7,900.0	3.09	133.99	7,897.4	-94.6	4.0	92.6	0.44	-0.35	4.55
8,000.0	1.62	136.53	7,997.3	-97.5	6.9	95.0	1.47	-1.47	2.54
8,100.0	1.07	158.75	8,097.3	-99.4	8.2	96.7	0.75	-0.55	22.22
8,200.0	0.83	201.19	8,197.3	-101.0	8.3	98.2	0.72	-0.24	42.44
8,300.0	0.96	243.24	8,297.3	-102.0	7.3	99.4	0.65	0.13	42.05
8,400.0	1.39	255.19	8,397.3	-102.7	5.4	100.4	0.49	0.43	11.95
8,500.0	1.71	270.91	8,497.2	-103.0	2.7	101.1	0.53	0.32	15.72
8,600.0	2.05	261.99	8,597.2	-103.2	-0.6	101.9	0.45	0.34	-8.92
8,700.0	1.98	264.53	8,697.1	-103.6	-4.1	102.9	0.11	-0.07	2.54
8,800.0	2.09	270.25	8,797.1	-103.8	-7.6	103.6	0.23	0.11	5.72
8,900.0	1.55	243.28	8,897.0	-104.4	-10.6	104.7	1.00	-0.54	-26.97
9,000.0	1.38	234.82	8,997.0	-105.7	-12.8	106.4	0.27	-0.17	-8.46
9,100.0	1.38	229.06	9,096.9	-107.2	-14.7	108.1	0.14	0.00	-5.76
9,200.0	1.31	226.76	9,196.9	-108.8	-16.5	110.0	0.09	-0.07	-2.30
9,300.0	1.08	211.51	9,296.9	-110.3	-17.8	111.8	0.39	-0.23	-15.25
9,400.0	1.17	200.51	9,396.9	-112.1	-18.6	113.6	0.23	0.09	-11.00

## Stryker Directional Survey Report

<b>Company:</b> Mewbourne Oil Company	<b>Local Co-ordinate Reference:</b> Well Devon 6 W2AD Fee #1H
<b>Project:</b> Eddy County, New Mexico	<b>TVD Reference:</b> 3043 + 27 @ 3070.0usft (Patterson 220)
<b>Site:</b> Section 6-25S-28E Devon 6 W2AD Fee 1H	<b>MD Reference:</b> 3043 + 27 @ 3070.0usft (Patterson 220)
<b>Well:</b> Devon 6 W2AD Fee #1H	<b>North Reference:</b> Grid
<b>Wellbore:</b> Original Hole (Sidetrack)	<b>Survey Calculation Method:</b> Minimum Curvature
<b>Design:</b> Original Hole (Sidetrack)	<b>Database:</b> Stryker_EDM

Measured Depth (usft)	Inclination (°)	Azimuth (°)	Vertical Depth (usft)	+N/-S (usft)	+E/-W (usft)	Vertical Section (usft)	Dogleg Rate (°/100usft)	Build Rate (°/100usft)	Turn Rate (°/100usft)
9,500.0	1.20	193.97	9,496.9	-114.1	-19.2	115.7	0.14	0.03	-6.54
9,594.0	1.18	191.47	9,590.8	-116.0	-19.7	117.6	0.06	-0.02	-2.66
<b>9594' MD Stryker Gyro</b>									
9,712.0	3.00	232.80	9,708.8	-119.0	-22.4	121.1	1.91	1.54	35.03
9,743.0	7.30	245.00	9,739.6	-120.4	-24.8	122.8	14.24	13.87	39.35
9,775.0	10.90	248.60	9,771.2	-122.3	-29.5	125.5	11.38	11.25	11.25
9,807.0	13.80	250.60	9,802.5	-124.7	-35.9	128.9	9.16	9.06	6.25
9,838.0	17.10	249.80	9,832.3	-127.5	-43.7	133.0	10.67	10.65	-2.58
9,870.0	19.70	252.30	9,862.7	-130.8	-53.2	137.8	8.49	8.13	7.81
9,901.0	22.10	257.70	9,891.7	-133.6	-63.9	142.4	9.92	7.74	17.42
9,933.0	25.20	263.00	9,921.0	-135.7	-76.5	146.6	11.74	9.69	16.56
9,965.0	28.30	266.30	9,949.6	-137.0	-90.9	150.3	10.74	9.69	10.31
9,996.0	30.60	265.80	9,976.5	-138.1	-106.1	153.9	7.46	7.42	-1.61
10,028.0	32.90	265.40	10,003.8	-139.4	-122.9	158.0	7.22	7.19	-1.25
10,059.0	34.70	266.80	10,029.5	-140.5	-140.1	162.0	6.33	5.81	4.52
10,091.0	36.10	268.50	10,055.6	-141.3	-158.6	165.8	5.35	4.38	5.31
10,122.0	36.40	272.30	10,080.6	-141.2	-176.9	168.8	7.31	0.97	12.26
10,154.0	38.40	274.10	10,106.0	-140.1	-196.3	170.9	7.12	6.25	5.63
10,186.0	41.30	273.50	10,130.6	-138.7	-216.8	173.0	9.14	9.06	-1.88
10,217.0	44.90	272.00	10,153.2	-137.7	-237.9	175.6	12.07	11.61	-4.84
10,249.0	46.40	270.30	10,175.6	-137.3	-260.8	179.0	6.03	4.69	-5.31
10,281.0	48.30	270.10	10,197.3	-137.2	-284.3	182.8	5.96	5.94	-0.63
10,312.0	50.30	270.20	10,217.5	-137.1	-307.8	186.7	6.46	6.45	0.32
10,344.0	51.90	270.50	10,237.6	-137.0	-332.7	190.7	5.05	5.00	0.94
10,376.0	53.40	270.90	10,257.0	-136.7	-358.2	194.6	4.79	4.69	1.25
10,407.0	55.30	272.10	10,275.1	-136.0	-383.4	198.2	6.89	6.13	3.87
10,439.0	57.80	273.10	10,292.7	-134.8	-410.0	201.5	8.24	7.81	3.13
10,470.0	60.40	272.90	10,308.6	-133.4	-436.6	204.5	8.41	8.39	-0.65
10,502.0	62.50	272.60	10,323.9	-132.0	-464.7	207.9	6.61	6.56	-0.94
10,537.0	65.20	272.10	10,339.3	-130.8	-496.0	211.9	7.82	7.71	-1.43
10,602.0	71.30	272.90	10,363.4	-128.1	-556.3	219.4	9.45	9.38	1.23
10,633.0	71.70	273.00	10,373.2	-126.6	-585.7	222.8	1.33	1.29	0.32
10,665.0	73.30	273.10	10,382.9	-125.0	-616.2	226.3	5.01	5.00	0.31
10,696.0	74.30	272.90	10,391.5	-123.4	-645.9	229.7	3.28	3.23	-0.65
10,728.0	75.50	272.90	10,399.9	-121.9	-676.8	233.3	3.75	3.75	0.00
10,759.0	77.20	272.20	10,407.2	-120.5	-706.8	237.1	5.91	5.48	-2.26
10,791.0	77.60	272.10	10,414.1	-119.3	-738.1	241.1	1.29	1.25	-0.31
10,823.0	80.20	271.70	10,420.3	-118.3	-769.4	245.3	8.22	8.13	-1.25
10,854.0	83.30	271.00	10,424.8	-117.6	-800.1	249.8	10.25	10.00	-2.26
10,886.0	86.70	271.10	10,427.5	-117.0	-832.0	254.5	10.63	10.63	0.31
10,949.0	88.60	271.00	10,430.1	-115.8	-894.9	263.9	3.02	3.02	-0.16
10,981.0	84.50	268.30	10,432.1	-116.0	-926.8	269.4	15.33	-12.81	-8.44
11,012.0	83.30	267.60	10,435.3	-117.1	-957.6	275.7	4.47	-3.87	-2.26
11,044.0	83.50	266.20	10,439.0	-118.9	-989.4	282.7	4.39	0.63	-4.38

## Stryker Directional Survey Report

<b>Company:</b>	Mewbourne Oil Company	<b>Local Co-ordinate Reference:</b>	Well Devon 6 W2AD Fee #1H
<b>Project:</b>	Eddy County, New Mexico	<b>TVD Reference:</b>	3043 + 27 @ 3070.0usft (Patterson 220)
<b>Site:</b>	Section 6-25S-28E Devon 6 W2AD Fee 1H	<b>MD Reference:</b>	3043 + 27 @ 3070.0usft (Patterson 220)
<b>Well:</b>	Devon 6 W2AD Fee #1H	<b>North Reference:</b>	Grid
<b>Wellbore:</b>	Original Hole (Sidetrack)	<b>Survey Calculation Method:</b>	Minimum Curvature
<b>Design:</b>	Original Hole (Sidetrack)	<b>Database:</b>	Stryker_EDM

Survey										
Measured Depth (usft)	Inclination (°)	Azimuth (°)	Vertical Depth (usft)	+N/-S (usft)	+E/-W (usft)	Vertical Section (usft)	Dogleg Rate (°/100usft)	Build Rate (°/100usft)	Turn Rate (°/100usft)	
11,076.0	85.10	264.90	10,442.2	-121.3	-1,021.1	290.4	6.43	5.00	-4.06	
11,108.0	86.20	263.90	10,444.6	-124.4	-1,052.9	298.8	4.64	3.44	-3.13	
11,139.0	87.00	263.20	10,446.5	-127.9	-1,083.6	307.4	3.43	2.58	-2.26	
11,171.0	90.90	262.30	10,447.1	-132.0	-1,115.4	316.7	12.51	12.19	-2.81	
11,202.0	91.20	262.00	10,446.5	-136.2	-1,146.1	326.0	1.37	0.97	-0.97	
11,234.0	92.50	262.50	10,445.5	-140.5	-1,177.8	335.5	4.35	4.06	1.56	
11,329.0	95.40	264.10	10,438.9	-151.6	-1,271.9	362.2	3.48	3.05	1.68	
11,424.0	92.80	270.50	10,432.1	-156.0	-1,366.5	382.4	7.26	-2.74	6.74	
11,519.0	90.80	272.20	10,429.1	-153.8	-1,461.4	396.1	2.76	-2.11	1.79	
11,614.0	89.30	272.50	10,429.0	-149.9	-1,556.3	408.1	1.61	-1.58	0.32	
11,708.0	90.00	272.40	10,429.6	-145.9	-1,650.2	419.8	0.75	0.74	-0.11	
11,803.0	88.70	274.60	10,430.7	-140.1	-1,745.0	430.0	2.69	-1.37	2.32	
11,898.0	89.50	274.90	10,432.2	-132.2	-1,839.7	438.1	0.90	0.84	0.32	
11,992.0	90.20	267.10	10,432.4	-130.6	-1,933.6	452.2	8.33	0.74	-8.30	
12,087.0	94.30	272.00	10,428.7	-131.3	-2,028.5	468.8	6.72	4.32	5.16	
12,181.0	90.20	271.80	10,425.0	-128.2	-2,122.3	481.4	4.37	-4.36	-0.21	
12,276.0	91.40	273.50	10,423.7	-123.8	-2,217.2	492.9	2.19	1.26	1.79	
12,371.0	91.40	271.50	10,421.4	-119.7	-2,312.1	504.7	2.10	0.00	-2.11	
12,403.0	91.20	270.60	10,420.6	-119.1	-2,344.1	509.5	2.88	-0.63	-2.81	
12,498.0	91.80	274.60	10,418.2	-114.8	-2,438.9	521.1	4.26	0.63	4.21	
12,592.0	89.00	278.50	10,417.5	-104.0	-2,532.3	526.2	5.11	-2.98	4.15	
12,687.0	90.40	281.00	10,418.0	-88.0	-2,625.9	526.0	3.02	1.47	2.63	
12,782.0	89.20	277.70	10,418.3	-72.5	-2,719.6	526.4	3.70	-1.26	-3.47	
12,877.0	89.50	275.10	10,419.4	-61.9	-2,814.0	531.8	2.75	0.32	-2.74	
12,971.0	93.10	273.50	10,417.3	-54.9	-2,907.7	540.5	4.19	3.83	-1.70	
13,066.0	93.50	273.50	10,411.8	-49.1	-3,002.4	550.6	0.42	0.42	0.00	
13,160.0	92.40	272.60	10,407.0	-44.1	-3,096.1	561.4	1.51	-1.17	-0.96	
13,255.0	89.60	270.50	10,405.3	-41.5	-3,191.0	574.7	3.68	-2.95	-2.21	
13,350.0	92.40	273.40	10,403.6	-38.3	-3,286.0	587.4	4.24	2.95	3.05	
13,445.0	91.20	273.30	10,400.7	-32.8	-3,380.7	597.8	1.27	-1.26	-0.11	
13,540.0	91.70	270.70	10,398.3	-29.5	-3,475.6	610.4	2.79	0.53	-2.74	
13,635.0	90.30	269.00	10,396.6	-29.7	-3,570.6	626.6	2.32	-1.47	-1.79	
13,728.0	92.50	268.00	10,394.3	-32.1	-3,663.6	644.5	2.60	2.37	-1.08	
13,823.0	90.50	266.40	10,391.8	-36.8	-3,758.4	664.9	2.70	-2.11	-1.68	
13,918.0	91.60	265.80	10,390.1	-43.2	-3,853.2	687.2	1.32	1.16	-0.63	
14,013.0	92.90	265.90	10,386.4	-50.1	-3,947.8	709.8	1.37	1.37	0.11	
14,108.0	92.90	268.50	10,381.6	-54.7	-4,042.6	730.2	2.73	0.00	2.74	
14,202.0	91.10	266.80	10,378.3	-58.6	-4,136.5	749.7	2.63	-1.91	-1.81	
14,298.0	91.20	268.90	10,376.4	-62.2	-4,232.4	769.3	2.19	0.10	2.19	
14,393.0	92.70	274.90	10,373.1	-59.0	-4,327.2	782.1	6.51	1.58	6.32	
14,487.0	91.80	275.20	10,369.4	-50.8	-4,420.8	789.6	1.01	-0.96	0.32	
14,582.0	93.90	277.80	10,364.7	-40.0	-4,515.0	794.7	3.52	2.21	2.74	
14,674.0	88.20	277.10	10,363.0	-28.1	-4,606.2	798.2	6.24	-6.20	-0.76	

## Stryker Directional Survey Report

<b>Company:</b> Mewbourne Oil Company	<b>Local Co-ordinate Reference:</b> Well Devon 6 W2AD Fee #1H
<b>Project:</b> Eddy County, New Mexico	<b>TVD Reference:</b> 3043 + 27 @ 3070.0usft (Patterson 220)
<b>Site:</b> Section 6-25S-28E Devon 6 W2AD Fee 1H	<b>MD Reference:</b> 3043 + 27 @ 3070.0usft (Patterson 220)
<b>Well:</b> Devon 6 W2AD Fee #1H	<b>North Reference:</b> Grid
<b>Wellbore:</b> Original Hole (Sidetrack)	<b>Survey Calculation Method:</b> Minimum Curvature
<b>Design:</b> Original Hole (Sidetrack)	<b>Database:</b> Stryker_EDM

Measured Depth (usft)	Inclination (°)	Azimuth (°)	Vertical Depth (usft)	+N/-S (usft)	+E/-W (usft)	Vertical Section (usft)	Dogleg Rate (°/100usft)	Build Rate (°/100usft)	Turn Rate (°/100usft)
14674' MD Projected to Bit									

Design Annotations						
Measured Depth (usft)	Vertical Depth (usft)	Local Coordinates		+N/-S (usft)	+E/-W (usft)	Comment
9,594.0	9,590.8	-116.0	-19.7			9594' MD Stryker Gyro
14,674.0	10,363.0	-28.1	-4,606.2			14674' MD Projected to Bit



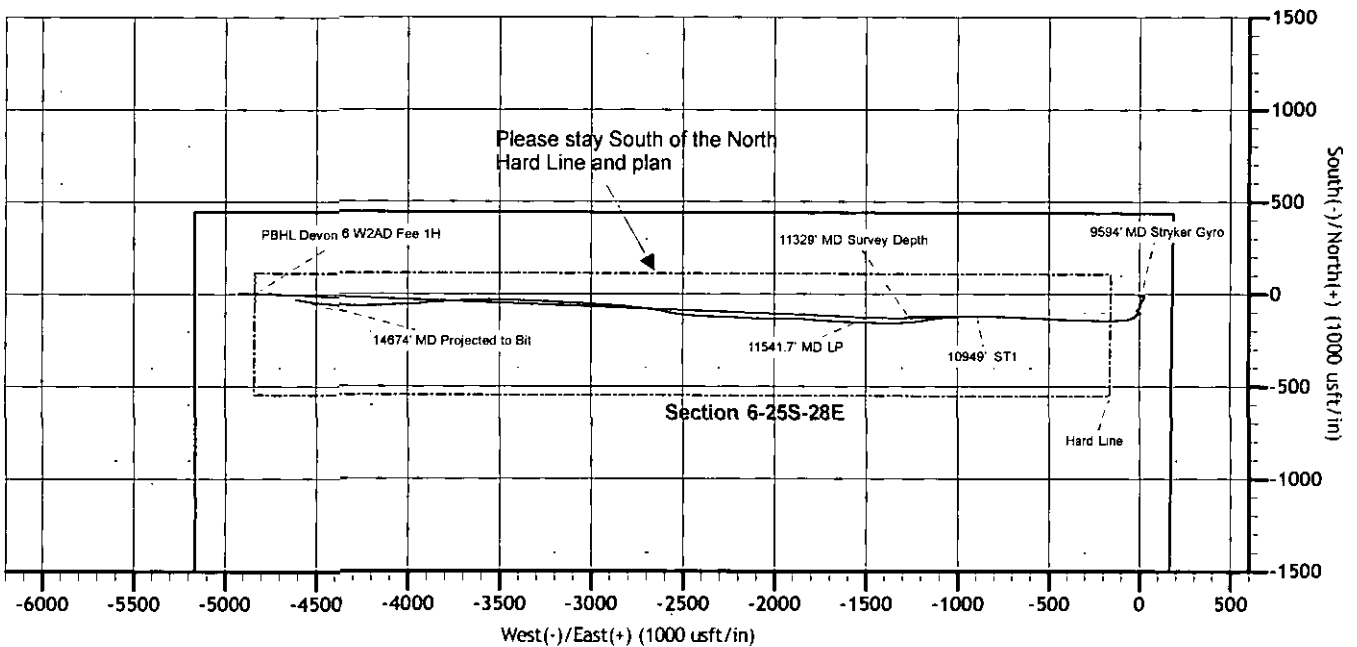
COMPANY: Mewbourne Oil Company  
 WELL: Devon 6 W2AD Fee #1H  
 COUNTY: Eddy County, New Mexico  
 DATUM: NAD 1927 (NADCON CONUS)  
 RIG: Patterson Patterson 220



OFFICE: 936.582.7294

GRID CORRECTION: To convert a Magnetic Direction to a Grid Direction, Add 7.22°

GEODETTIC ZONE: New Mexico East 3001 3043 + 27 @ 3070.0usft (Patterson 220) GROUND ELEVATION: 3043.0										
	+N/-S	+E/-W	Northing	Easting	Latitude	Longitude	Slot			
	0.0	0.0	423880.70	566528.10	32° 9' 54.656 N	104° 7' 6.012 W				
PLAN SECTIONS										
Sec	MD	Inc	Azi	TVD	+N/-S	+E/-W	Dleg	TFace	VSect	Target
1	10949.0	89.80	270.40	10429.5	-116.2	-894.9	0.00	0.00	894.8	
2	10969.0	87.50	268.47	10429.9	-116.4	-814.9	15.00	220.00	914.8	
3	11309.0	87.50	268.47	10444.8	-125.4	-1254.5	0.00	0.00	1254.3	
4	11501.7	91.91	272.22	10445.7	-124.3	-1447.1	3.00	40.42	1446.9	
5	14892.8	91.91	272.22	10333.0	6.8	-4833.8	0.00	0.00	4833.8	PBHL Devon 6 W2AD Fee 1H



SHL 440' FNL; 185'  
 FEL  
 Section 6-25S-28E  
 PBHL 440' FNL; 330'  
 FWL  
 Section 6-25S-28E

Azimuths to Grid North  
 True North: -0.11°  
 Magnetic North: 7.22°

Magnetic Field  
 Strength: 47975.9nT  
 Dip Angle: 59.93°  
 Date: 3/14/2016  
 Model: IGRF2015

