

NM OIL CONSERVATION
ARTESIA DISTRICT

District I
1625 N. French Dr., Hobbs, NM 88240
Phone: (575) 393-6161 Fax: (575) 393-0720
District II
811 S. First St., Artesia, NM 88210
Phone: (575) 748-1283 Fax: (575) 748-9720
District III
1000 Rio Brazos Road, Aztec, NM 87410
Phone: (505) 334-6178 Fax: (505) 334-6170
District IV
1220 S. St. Francis Dr., Santa Fe, NM 87505
Phone: (505) 476-3460 Fax: (505) 476-3462

State of New Mexico
Energy, Minerals & Natural Resources Department
OIL CONSERVATION DIVISION
1220 South St. Francis Dr.
Santa Fe, NM 87505

OCT 25 2016

Form C-102
Revised August 1, 2011
Submit one copy to appropriate
District Office

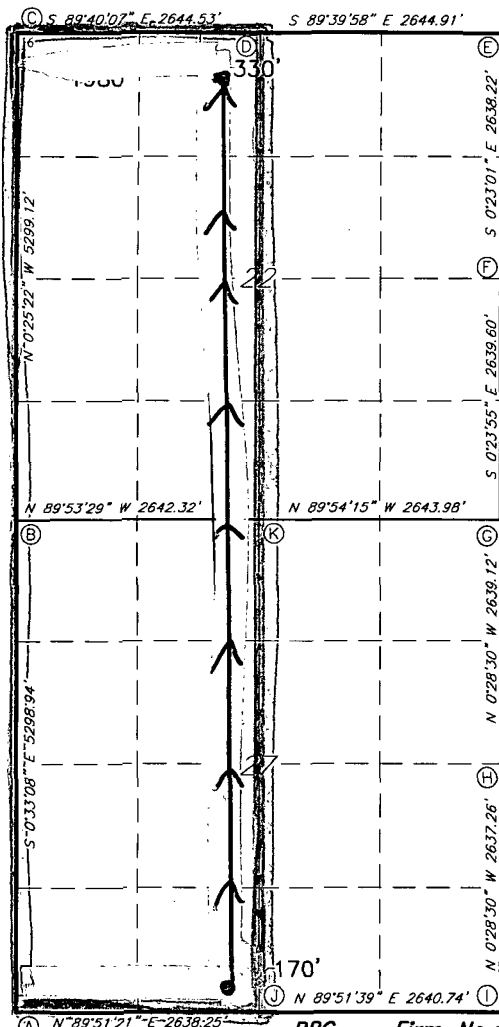
RECEIVED

☐ AMENDED REPORT

WELL LOCATION AND ACREAGE DEDICATION PLAT

| | | | | | | | | | |
|---|----------------------|---|---------------------|--|------------------------------|----------------------------------|-------------------------------|-------------------------------|-----------------------|
| 1 API Number 30-015-43684 | | 2 Pool Code 98017 | | 3 Pool Name WC-0155262728A; Wolfcamp | | | | | |
| 4 Property Code 316068 | | 5 Property Name OWL DRAW 27/22 W2N1/4 FED COM | | | | | | 6 Well Number 1H | |
| 7 GRID NO. 14744 | | 8 Operator Name MEWBOURNE OIL COMPANY | | | | | | 9 Elevation 3178' | |
| 10 Surface Location | | | | | | | | | |
| UL or lot no. N | Section 27 | Township 26S | Range 27E | Lot Idn | Feet from the 170 | North/South line SOUTH | Feet From the 2230' | East/West line WEST | County EDDY |
| 11 Bottom Hole Location If Different From Surface | | | | | | | | | |
| UL or lot no. C | Section 22 | Township 26S | Range 27E | Lot Idn | Feet from the 35A' | North/South line NORTH | Feet from the 2313' | East/West line WEST | County EDDY |
| 12 Dedicated Acres 320 | | 13 Joint or Infill | | 14 Consolidation Code | | 15 Order No. | | | |

No allowable will be assigned to this completion until all interest have been consolidated or a non-standard unit has been approved by the division.



GEODETIC DATA
NAD 27 GRID - NM EAST

SURFACE LOCATION
N: 365994.7 - E: 548051.3
LAT: 32.00613826° N
LONG: 104.17831608° W

BOTTOM LOCATION
N: 376072.7 - E: 547632.1

CORNER DATA
NAD 27 GRID - NM EAST
A: FOUND BRASS CAP "1941"
N: 365819.1 - E: 545743.5
B: FOUND BRASS CAP "1941"
N: 371116.5 - E: 545692.4
C: FOUND BRASS CAP "1941"
N: 376414.2 - E: 545653.4
D: FOUND BRASS CAP "1941"
N: 376398.9 - E: 548297.2
E: FOUND BRASS CAP "1941"
N: 376383.5 - E: 550941.4
F: FOUND BRASS CAP "1941"
N: 373746.0 - E: 550959.1
G: FOUND BRASS CAP "1941"
N: 371107.1 - E: 550977.5
H: FOUND BRASS CAP "1941"
N: 368468.7 - E: 550999.3
I: FOUND BRASS CAP "1941"
N: 365832.2 - E: 551021.2
J: FOUND BRASS CAP "1941"
N: 365825.7 - E: 548381.1
K: FOUND BRASS CAP "1941"
N: 371111.5 - E: 548334.1

17 OPERATOR CERTIFICATION

I hereby certify that the information contained herein is true and complete to the best of my knowledge and belief, and that this organization either owns a working interest or unleased mineral interest in the land including the proposed bottom hole location or has a right to drill this well at this location pursuant to a contract with an owner of such a mineral or working interest, or to a voluntary pooling agreement or a compulsory pooling order heretofore entered by the division.

Signature Jackie Lathan Date 10/20/16
Printed Name Jackie Lathan

E-mail Address

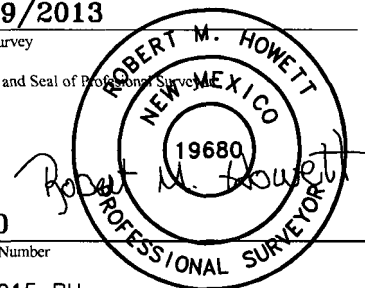
18 SURVEYOR CERTIFICATION

I hereby certify that the well location shown on this plat was plotted from field notes of actual surveys made by me or under my supervision, and that the same is true and correct to the best of my belief.

9/19/2013

Date of Survey

Signature and Seal of Professional Surveyor



19680

Certificate Number

4/1/2015 BH

RRC - Firm No.: TX 10193838 NM 4655451 - Job No.: LS130383