

District I  
1625 N. French Dr., Hobbs, NM 88240  
Phone: (575) 393-6161 Fax: (575) 393-0720  
District II  
811 S. First St., Artesia, NM 88210  
Phone: (575) 748-1283 Fax: (575) 748-9720  
District III  
1000 Rio Brazos Road, Aztec, NM 87410  
Phone: (505) 334-6178 Fax: (505) 334-6170  
District IV  
1220 S. St. Francis Dr., Santa Fe, NM 87505  
Phone: (505) 476-3460 Fax: (505) 476-3462

**NM OIL CONSERVATION**  
ARTESIA DISTRICT  
State of New Mexico  
Energy, Minerals & Natural Resources  
Department  
**OIL CONSERVATION DIVISION**  
1220 South St. Francis Dr.  
Santa Fe, NM 87505

NOV 21 2016

RECEIVED

FORM C-102

Revised August 1, 2011

Submit one copy to appropriate

District Office

☐ AMENDED REPORT

**WELL LOCATION AND ACREAGE DEDICATION PLAT**

<sup>1</sup> API Number 30-015- 42264	<sup>2</sup> Pool Code 97860	<sup>3</sup> Pool Name Jennings; Bone Spring, West
<sup>4</sup> Property Code 38727	<sup>5</sup> Property Name ROSS DRAW 8 FED	
<sup>7</sup> OGRID No. 7377	<sup>8</sup> Operator Name EOG RESOURCES, INC.	<sup>6</sup> Well Number #7H  <sup>9</sup> Elevation 3278'

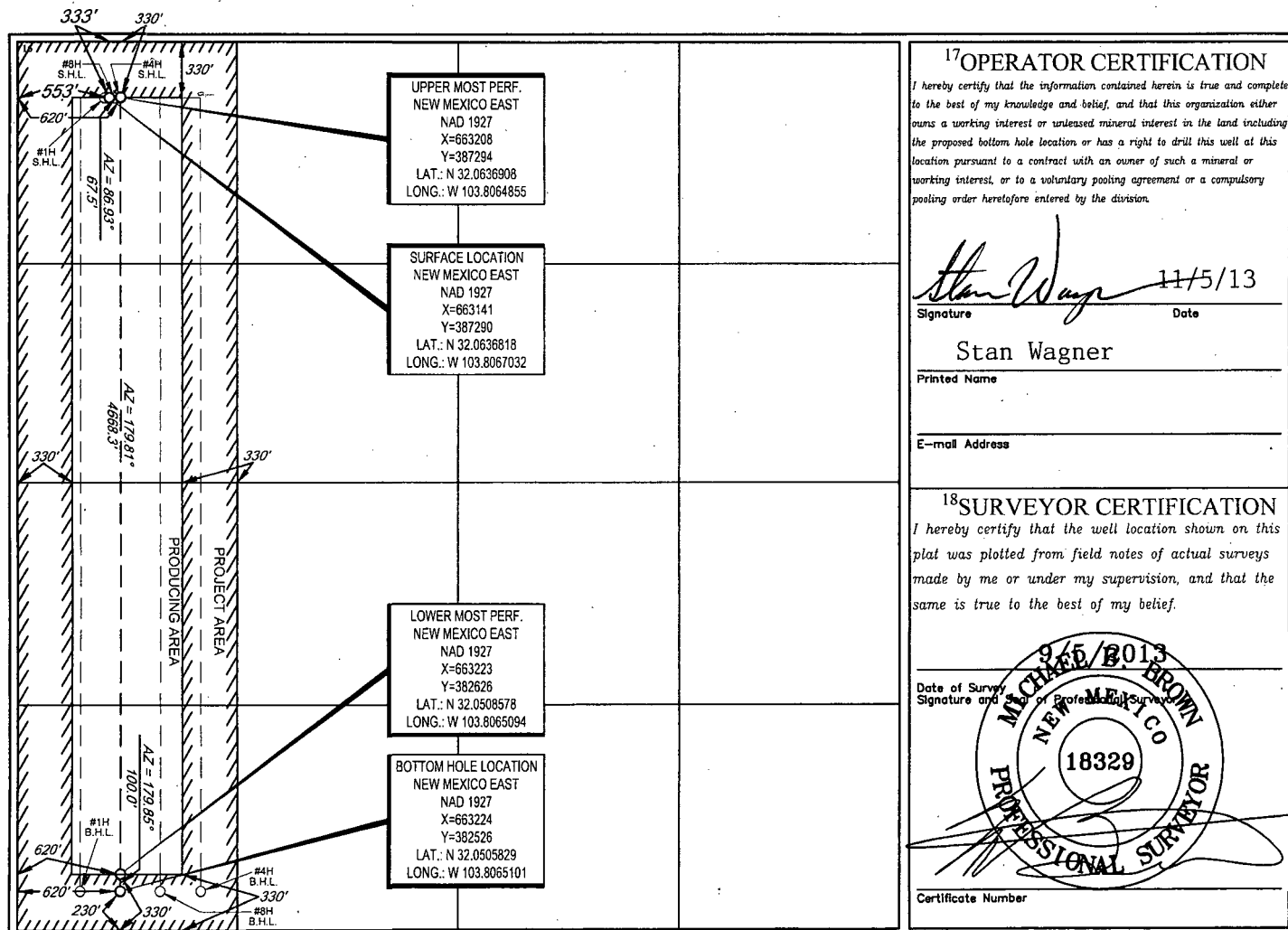
<sup>10</sup>Surface Location

UL or lot no.	Section	Township	Range	Lot Idn	Feet from the	North/South line	Feet from the	East/West line	County
D	8	26-S	31-E	-	333'	NORTH	553'	WEST	EDDY

UL or lot no.	Section	Township	Range	Lot Idn	Feet from the	North/South line	Feet from the	East/West line	County
M	8	26-S	31-E	-	229	SOUTH	643	WEST	EDDY

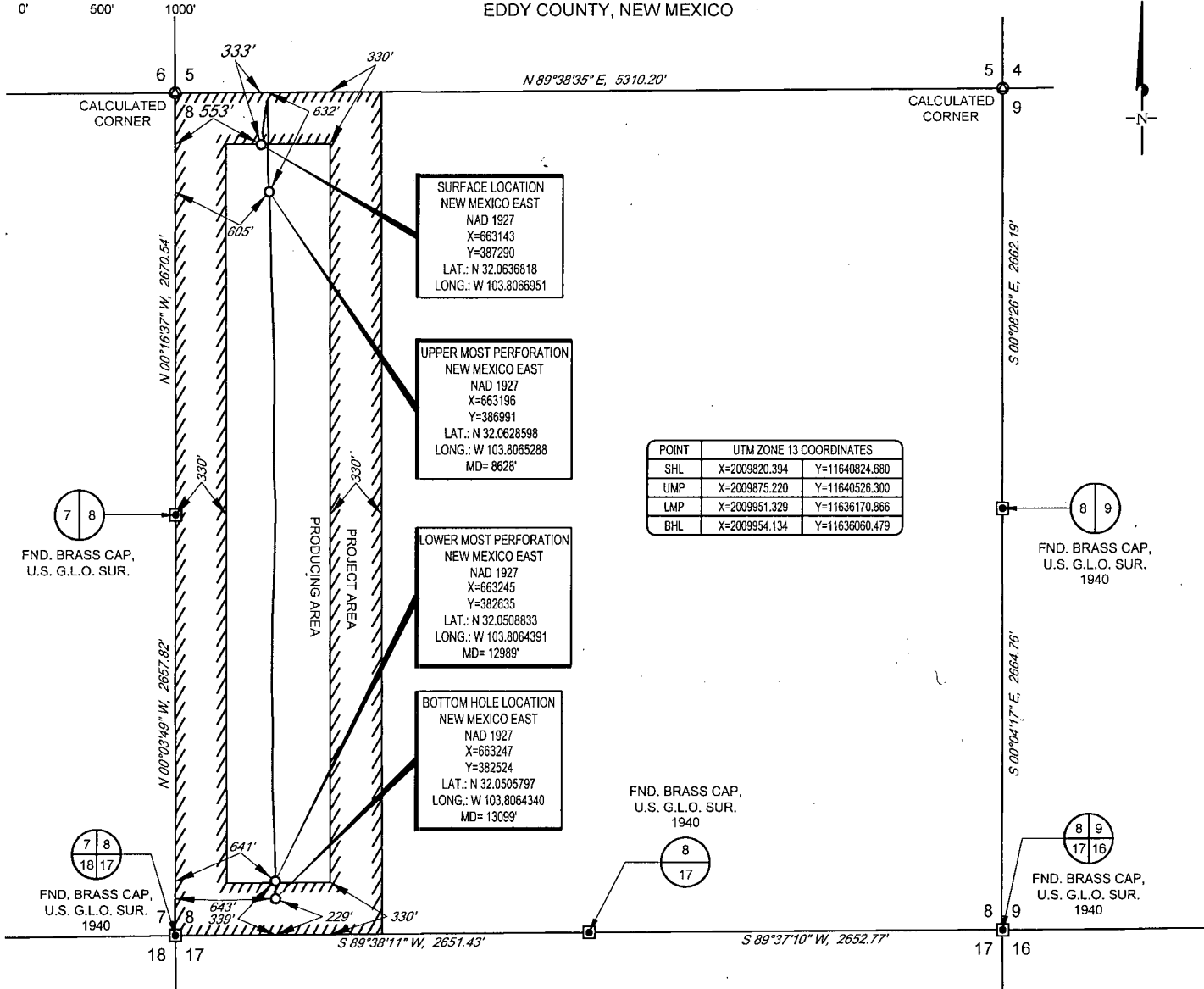
<sup>12</sup> Dedicated Acres 160	<sup>13</sup> Joint or Infill	<sup>14</sup> Consolidation Code	<sup>15</sup> Order No.
--------------------------------------	-------------------------------	----------------------------------	-------------------------

No allowable will be assigned to this completion until all interests have been consolidated or a non-standard unit has been approved by the division.



SCALE: 1" = 1000'

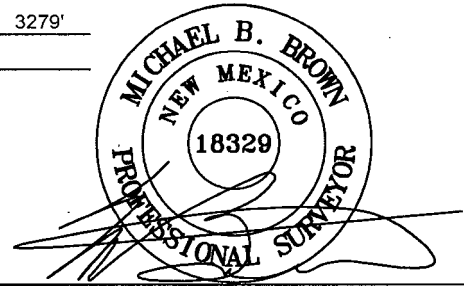
SECTION 8, TOWNSHIP 26-S, RANGE 31-E, N.M.P.M.  
EDDY COUNTY, NEW MEXICO



LEASE NAME & WELL NO.: ROSS DRAW 8 FED #7H  
 SECTION 8 TWP 26-S RGE 31-E SURVEY N.M.P.M.  
 COUNTY EDDY STATE NM ELEVATION 3279'  
 DESCRIPTION 333' FNL & 553' FWL



1400 EVERMAN PARKWAY, Ste. 197 • FT. WORTH, TEXAS 76140  
 TELEPHONE: (817) 744-7512 • FAX (817) 744-7548  
 2903 NORTH BIG SPRING • MIDLAND, TEXAS 79705  
 TELEPHONE: (432) 682-1653 OR (800) 767-1653 • FAX (432) 682-1743  
 WWW.TOPOGRAPHIC.COM



Michael Blake Brown, P.S. No. 18329  
 SEPTEMBER 26, 2016



ROSS DRAW 8 FED #7H AS-COMPLETED	REVISION:
DATE: 09/26/16	
FILE:AD_ROSSDRAW8FED_7H	
DRAWN BY: A.C.C.	
SHEET: 1 OF 1	

- NOTES:
1. ORIGINAL DOCUMENT SIZE: 8.5" X 11"
  2. ALL BEARINGS, DISTANCES, AND COORDINATE VALUES CONTAINED HEREIN ARE GRID BASED UPON THE NEW MEXICO STATE PLANE COORDINATE SYSTEM, EAST ZONE, U.S. SURVEY FEET, NORTH AMERICAN DATUM 19 27.
  3. THIS EASEMENT/SERVITUDE LOCATION SHOWN HEREON HAS BEEN SURVEYED ON THE GROUND UNDER MY SUPERVISION AND PREPARED ACCORDING TO THE EVIDENCE FOUND AT THE TIME OF SURVEY, AND DATA PROVIDED BY EOG RESOURCES, INC. THIS CERTIFICATION IS MADE AND LIMITED TO THOSE PERSONS OR ENTITIES SHOWN ON THE FACE OF THIS PLAT AND IS NON-TRANSFERABLE. THIS SURVEY IS CERTIFIED FOR THIS TRANSACTION ONLY.