

District I
1625 N. French Dr., Hobbs, NM 88240
Phone: (575) 393-6161 Fax: (575) 393-0720
District II
811 S. First St., Artesia, NM 88210
Phone: (575) 748-1283 Fax: (575) 748-9720
District III
1000 Rio Brazos Road, Aztec, NM 87410
Phone: (505) 334-6178 Fax: (505) 334-6170
District IV
1220 S. St. Francis Dr., Sante Fe, NM 87505
Phone: (505) 476-3460 Fax: (505) 476-3462

State of New Mexico
Energy, Minerals & Natural Resources
Department
OIL CONSERVATION DIVISION
1220 South St. Francis Dr.
Sante Fe, NM 87505

FORM C-102
Revised August 1, 2011
Submit one copy to appropriate
District Office

AMENDED REPORT

WELL LOCATION AND ACREAGE DEDICATION PLAT

¹ API Number 30-015-44052	² Pool Code 54600	³ Pool Name Santo Nino; Wildcat Bone Spring Oil
⁴ Property Code 317321	⁵ Property Name TERLINGUA 23 STATE	
⁶ OGRID No. 7377	⁸ Operator Name EOG RESOURCES, INC.	⁷ Well Number #501H ⁹ Elevation 3449'

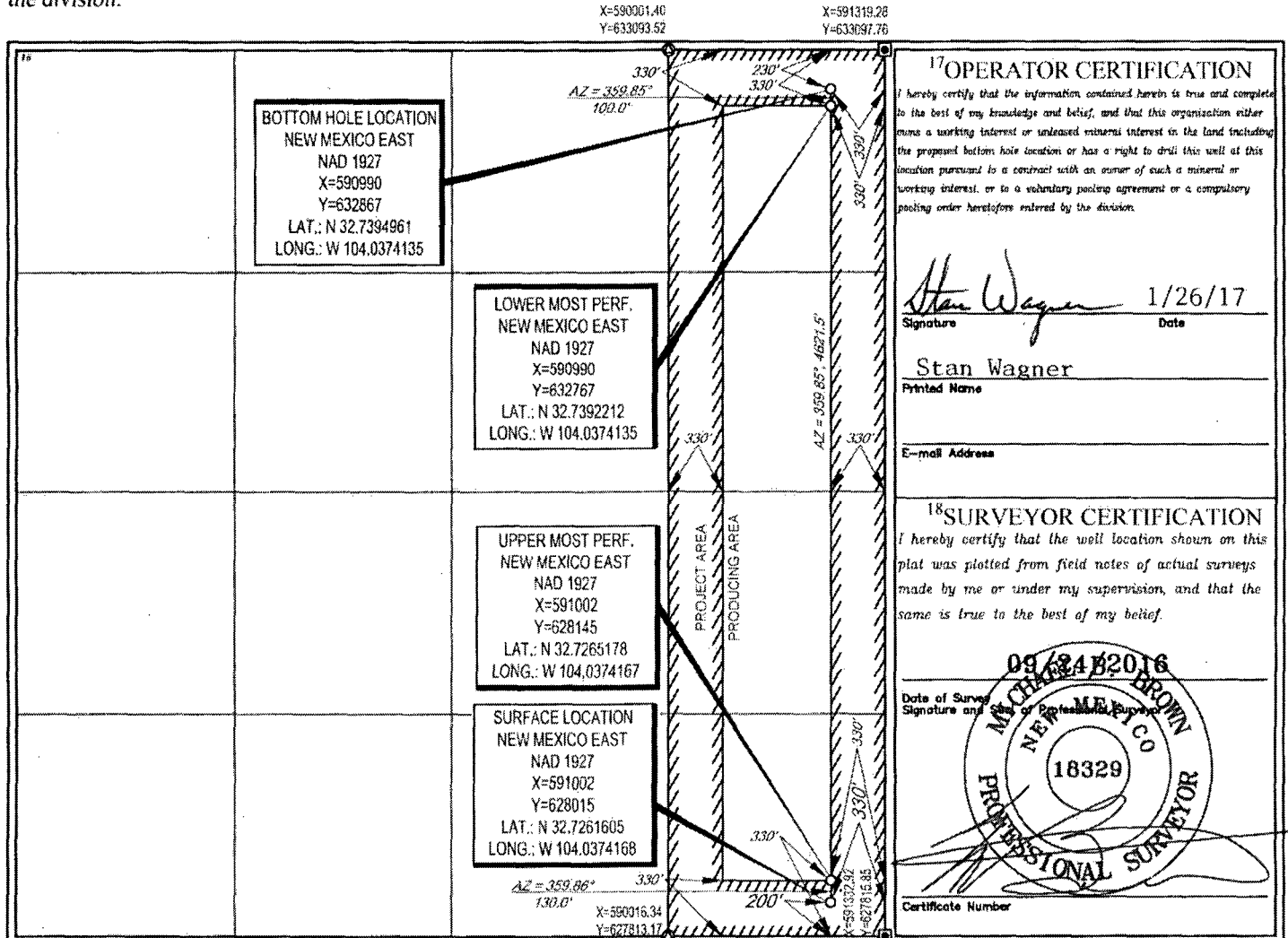
¹⁰Surface Location

UL or lot no.	Section	Township	Range	Lot Idn	Feet from the	North/South line	Feet from the	East/West line	County
P	23	18-S	29-E	-	200'	SOUTH	330'	EAST	EDDY

UL or lot no.	Section	Township	Range	Lot Idn	Feet from the	North/South line	Feet from the	East/West line	County
A	23	18-S	29-E	-	230'	NORTH	330'	EAST	EDDY

¹² Dedicated Acres 160.00	¹³ Joint or Infill	¹⁴ Consolidation Code	¹⁵ Order No.
---	-------------------------------	----------------------------------	-------------------------

No allowable will be assigned to this completion until all interests have been consolidated or a non-standard unit has been approved by the division.



Permit Information:

Well Name: Terlingua 23 State No. 501H

Location:

SL: 200' FSL & 330' FEL, Section 23, T-18-S, R-29-E, Eddy Co., N.M.

BHL: 230' FNL & 330' FEL, Section 23, T-18-S, R-29-E, Eddy Co., N.M.

Casing Program:

Hole Size	Interval	Csg OD	Weight	Grade	Conn	DF _{min} Collapse	DF _{min} Burst	DF _{min} Tension
14.75"	0 - 350'	10.75"	40.5#	J55	STC	1.125	1.25	1.60
8.75"	0 - 3,200'	7.625"	29.7#	HCP-110	LTC	1.125	1.25	1.60
6.75"	0' - 12,795'	5.5"	17#	HCP-110	LTC	1.125	1.25	1.60

Cement Program:

Depth	No. Sacks	Wt. ppg	Yld Ft ³ /ft	Slurry Description
350'	500	14.8	1.34	Class C + 2% CaCl ₂ + 4% Gel + 0.25 pps Celloflake (TOC @ Surface)
3,200'	800	12.7	1.90	35:65 Poz:Class C + 6% Gel + 3% CaCl ₂ + 0.5% CPT-45 + 0.45% CPT-20 (TOC @ Surface)
	200	14.8	1.33	Class C + 0.20% CPT-19
12,795'	750	14.8	1.26	Class H + 0.15% CPT-51A + 0.1% CPT-14B + 3% MagOx + 0.3% CD-3 + 0.2% CPT-20A (TOC @ 2700')

Mud Program:

Depth	Type	Weight (ppg)	Viscosity	Water Loss
0 - 350'	Fresh - Gel	8.6-8.8	28-34	N/c
350' - 3,200'	Brine	8.8-10.0	28-34	N/c
3,200' - 12,795' Lateral	Brine	8.8-10.0	28-34	N/c

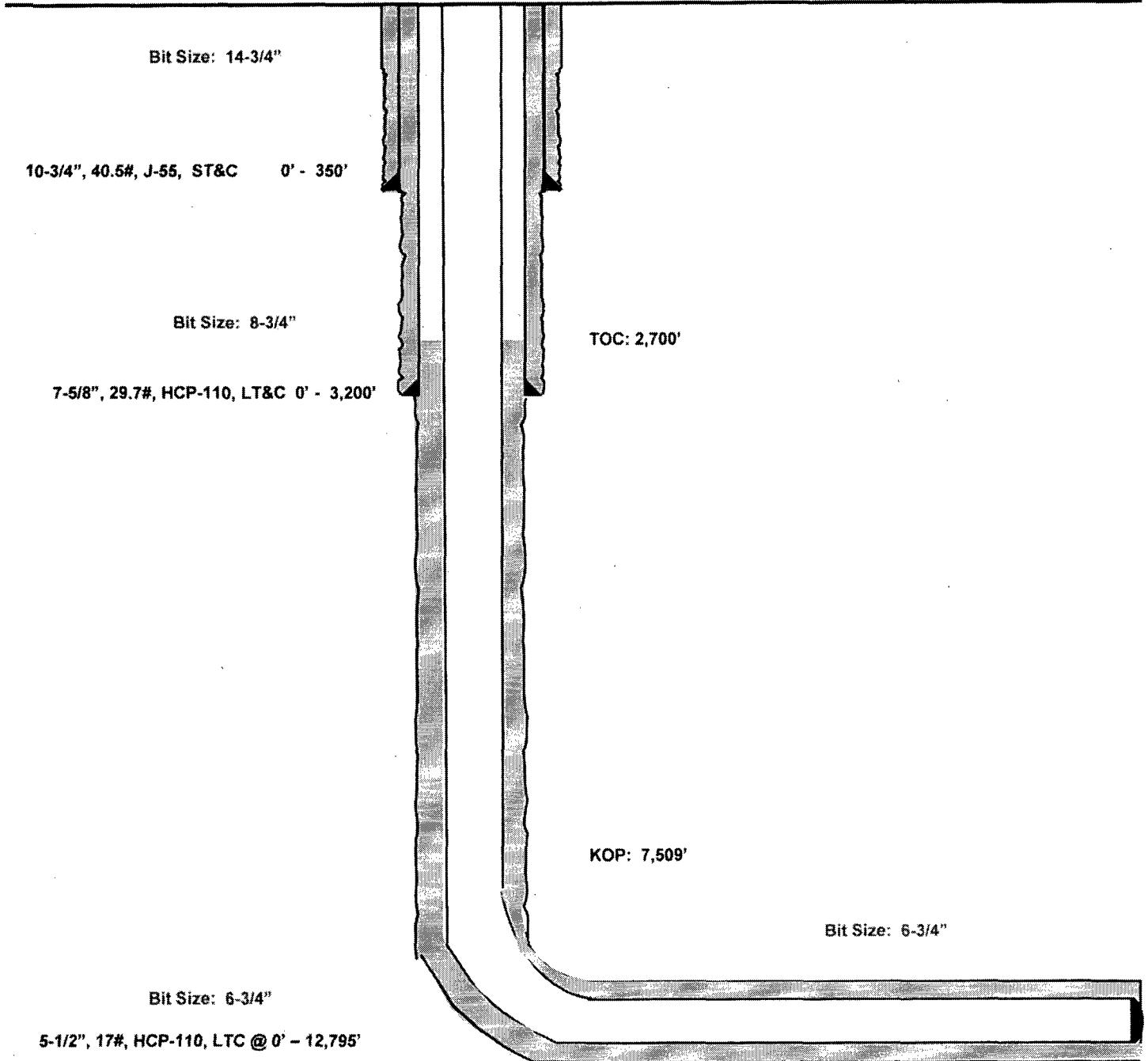
Terlingua 23 State #501H

Eddy County, New Mexico
Proposed Wellbore

200' FSL
330' FEL
Section 23
T-18-S, R-29-E

API: 30-015-*****

KB: 3,474'
GL: 3,449'



Lateral: 12,795' MD, 7,919' TVD
BH Location: 230' FNL & 330' FEL
Section 23
T-18-S, R-29-E



Eddy County, NM (NAD 27 NME)

Terlingua 23 State #501H

Plan #0.1

PROJECT DETAILS: Eddy County, NM (NAD 27 NME)

Geodetic System: US State Plane 1927 (Exact solution)
 Datum: NAD 1927 (NADCON CONUS)
 Ellipsoid: Clarke 1866
 Zone: New Mexico East 1001
 System Datum: Mean Sea Level

WELL DETAILS: #501H

Ground Level: 3449.0
 KB = 25' @ 3474.0usft
 Northing: 628018.00 Easting: 591002.00 Latitude: 32° 43' 34.176 N Longitude: 104° 2' 14.708 W

Azimuths to Grid North
 True North: -0.18"
 Magnetic North: 7.09"

Magnetic Field
 Strength: 48226.0usT
 Dip Angle: 60.45°
 Date: 1/28/2017
 Model: IGRF 2015



To convert a Magnetic Direction to a Grid Direction, Add 7.09"
 To convert a Magnetic Direction to a True Direction, Add 7.25" East
 To convert a True Direction to a Grid Direction, Subtract 0.16"

SECTION DETAILS

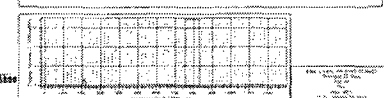
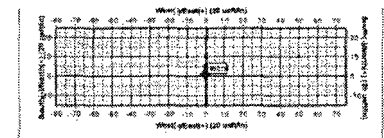
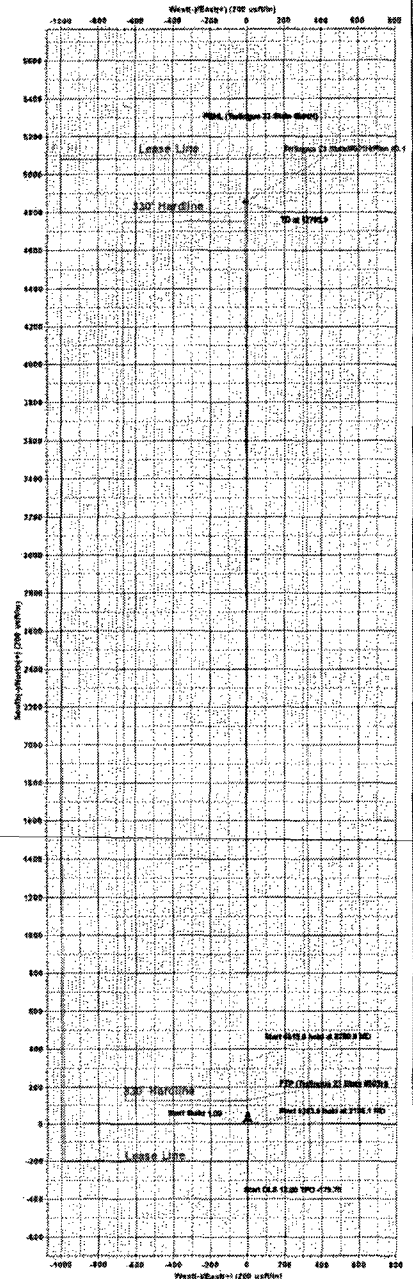
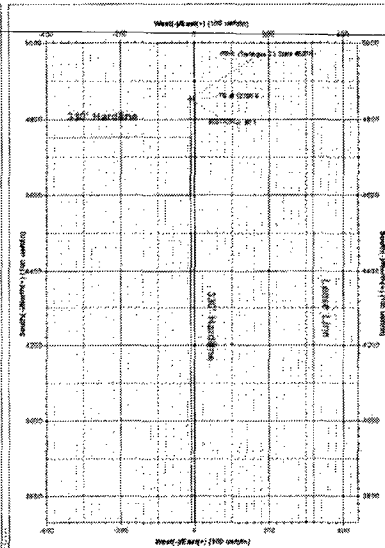
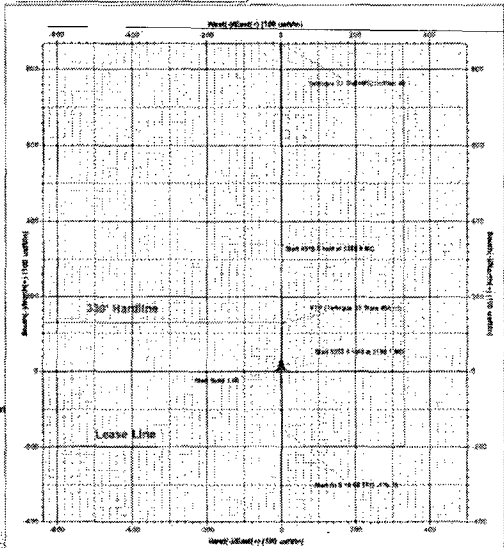
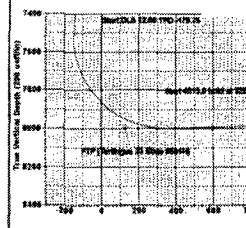
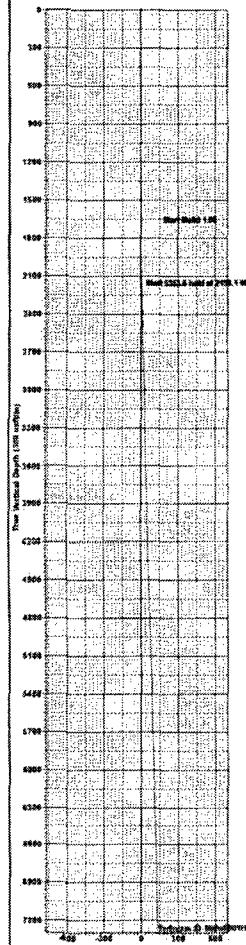
Sec	MD	Inc	Azi	TVD	+N/-S	+E/-W	Dleg	TFace	VSecl	Target
1	0.0	0.00	0.00	0.0	0.0	0.0	0.00	0.00	0.0	
2	2000.0	0.00	0.00	2000.0	0.0	0.0	0.00	0.00	0.0	
3	2158.1	1.56	179.80	2158.0	-2.1	0.0	1.00	179.60	-2.1	
4	7509.6	1.56	179.80	7507.6	-147.9	1.0	0.00	0.00	-147.9	
5	8280.9	91.00	359.85	7998.0	337.7	-0.2	12.00	-179.75	337.7	
6	12795.9	91.00	359.85	7919.2	4852.0	-12.0	0.00	0.00	4852.0	PBHL (Terlingua 23 State #501H)

CASING DETAILS

No casing data is available

WELLBORE TARGET DETAILS (MAP CO-ORDINATES)

Name	TVD	+N/-S	+E/-W	Northing	Easting
PBHL (Terlingua 23 State #501H)	7919.2	4852.0	-12.0	633867.00	560990.00
FTP (Terlingua 23 State #501H)	7998.0	130.0	0.0	628145.00	591002.00





EOG Resources - Midland

Eddy County, NM (NAD 27 NME)

Terlingua 23 State

#501H

OH

Plan: Plan #0.1

Standard Planning Report

26 January, 2017



EOG Resources, Inc.
Planning Report

Database: EDM 5000.1 Single User Db
Company: EOG Resources - Midland
Project: Eddy County, NM (NAD 27 NME)
Site: Terlingua 23 State
Well: #501H
Wellbore: OH
Design: Plan #0.1

Local Co-ordinate Reference: Well #501H
TVD Reference: KB = 25' @ 3474.0usft
MD Reference: KB = 25' @ 3474.0usft
North Reference: Grid
Survey Calculation Method: Minimum Curvature

Project	Eddy County, NM (NAD 27 NME)		
Map System:	US State Plane 1927 (Exact solution)	System Datum:	Mean Sea Level
Geo Datum:	NAD 1927 (NADCON CONUS)		
Map Zone:	New Mexico East 3001		

Site	Terlingua 23 State		
Site Position:	Northing:	628,015.00 usft	Latitude: 32° 43' 34.176 N
From: Map	Easting:	591,002.00 usft	Longitude: 104° 2' 14.706 W
Position Uncertainty:	0.0 usft	Slot Radius: 13-3/16"	Grid Convergence: 0.16°

Well	#501H		
Well Position	+N/-S	0.0 usft	Northing: 628,015.00 usft
	+E/-W	0.0 usft	Easting: 591,002.00 usft
Position Uncertainty	0.0 usft	Wellhead Elevation:	0.0 usft
		Ground Level:	3,449.0 usft

Wellbore	OH				
Magnetics	Model Name	Sample Date	Declination	Dip Angle	Field Strength
	IGRF2015	1/26/2017	(°) 7.25	(°) 60.45	(nT) 48,226

Design	Plan #0.1		
Audit Notes:			
Version:	Phase:	PLAN	Tie On Depth: 0.0
Vertical Section:	Depth From (TVD)	+N/-S	+E/-W
	(usft)	(usft)	(usft)
	0.0	0.0	0.0
			Direction
			(°) 359.86

Plan Sections										
Measured	Inclination	Azimuth	Vertical	+N/-S	+E/-W	Dogleg	Build	Turn	TFO	Target
Depth	(°)	(°)	Depth	(usft)	(usft)	Rate	Rate	Rate	(°)	
(usft)			(usft)			(°/100usft)	(°/100usft)	(°/100usft)		
0.0	0.00	0.00	0.0	0.0	0.0	0.00	0.00	0.00	0.00	
2,000.0	0.00	0.00	2,000.0	0.0	0.0	0.00	0.00	0.00	0.00	
2,156.1	1.56	179.60	2,156.0	-2.1	0.0	1.00	1.00	0.00	179.60	
7,509.6	1.56	179.60	7,507.6	-147.9	1.0	0.00	0.00	0.00	0.00	
8,280.9	91.00	359.85	7,998.0	337.7	-0.2	12.00	11.60	-23.30	-179.75	
12,795.9	91.00	359.85	7,919.2	4,852.0	-12.0	0.00	0.00	0.00	0.00	PBHL (Terlingua 23 S)



EOG Resources, Inc.
Planning Report

Database: EDM 5000.1 Single User Db
 Company: EOG Resources - Midland
 Project: Eddy County, NM (NAD 27 NME)
 Site: Terlingua 23 State
 Well: #501H
 Wellbore: OH
 Design: Plan #0.1

Local Co-ordinate Reference: Well #501H
 TVD Reference: KB = 25' @ 3474.0usft
 MD Reference: KB = 25' @ 3474.0usft
 North Reference: Grid
 Survey Calculation Method: Minimum Curvature

Planned Survey

Measured Depth (usft)	Inclination (°)	Azimuth (°)	Vertical Depth (usft)	+N/-S (usft)	+E/-W (usft)	Vertical Section (usft)	Dogleg Rate (°/100usft)	Build Rate (°/100usft)	Turn Rate (°/100usft)
0.0	0.00	0.00	0.0	0.0	0.0	0.0	0.00	0.00	0.00
100.0	0.00	0.00	100.0	0.0	0.0	0.0	0.00	0.00	0.00
200.0	0.00	0.00	200.0	0.0	0.0	0.0	0.00	0.00	0.00
300.0	0.00	0.00	300.0	0.0	0.0	0.0	0.00	0.00	0.00
400.0	0.00	0.00	400.0	0.0	0.0	0.0	0.00	0.00	0.00
500.0	0.00	0.00	500.0	0.0	0.0	0.0	0.00	0.00	0.00
600.0	0.00	0.00	600.0	0.0	0.0	0.0	0.00	0.00	0.00
700.0	0.00	0.00	700.0	0.0	0.0	0.0	0.00	0.00	0.00
800.0	0.00	0.00	800.0	0.0	0.0	0.0	0.00	0.00	0.00
900.0	0.00	0.00	900.0	0.0	0.0	0.0	0.00	0.00	0.00
1,000.0	0.00	0.00	1,000.0	0.0	0.0	0.0	0.00	0.00	0.00
1,100.0	0.00	0.00	1,100.0	0.0	0.0	0.0	0.00	0.00	0.00
1,200.0	0.00	0.00	1,200.0	0.0	0.0	0.0	0.00	0.00	0.00
1,300.0	0.00	0.00	1,300.0	0.0	0.0	0.0	0.00	0.00	0.00
1,400.0	0.00	0.00	1,400.0	0.0	0.0	0.0	0.00	0.00	0.00
1,500.0	0.00	0.00	1,500.0	0.0	0.0	0.0	0.00	0.00	0.00
1,600.0	0.00	0.00	1,600.0	0.0	0.0	0.0	0.00	0.00	0.00
1,700.0	0.00	0.00	1,700.0	0.0	0.0	0.0	0.00	0.00	0.00
1,800.0	0.00	0.00	1,800.0	0.0	0.0	0.0	0.00	0.00	0.00
1,900.0	0.00	0.00	1,900.0	0.0	0.0	0.0	0.00	0.00	0.00
2,000.0	0.00	0.00	2,000.0	0.0	0.0	0.0	0.00	0.00	0.00
2,100.0	1.00	179.60	2,100.0	-0.9	0.0	-0.9	1.00	1.00	0.00
2,156.1	1.56	179.60	2,156.0	-2.1	0.0	-2.1	1.00	1.00	0.00
2,200.0	1.56	179.60	2,200.0	-3.3	0.0	-3.3	0.00	0.00	0.00
2,300.0	1.56	179.60	2,299.9	-6.0	0.0	-6.0	0.00	0.00	0.00
2,400.0	1.56	179.60	2,399.9	-8.8	0.1	-8.8	0.00	0.00	0.00
2,500.0	1.56	179.60	2,499.9	-11.5	0.1	-11.5	0.00	0.00	0.00
2,600.0	1.56	179.60	2,599.8	-14.2	0.1	-14.2	0.00	0.00	0.00
2,700.0	1.56	179.60	2,699.8	-16.9	0.1	-16.9	0.00	0.00	0.00
2,800.0	1.56	179.60	2,799.7	-19.7	0.1	-19.7	0.00	0.00	0.00
2,900.0	1.56	179.60	2,899.7	-22.4	0.2	-22.4	0.00	0.00	0.00
3,000.0	1.56	179.60	2,999.7	-25.1	0.2	-25.1	0.00	0.00	0.00
3,100.0	1.56	179.60	3,099.6	-27.8	0.2	-27.8	0.00	0.00	0.00
3,200.0	1.56	179.60	3,199.6	-30.6	0.2	-30.6	0.00	0.00	0.00
3,300.0	1.56	179.60	3,299.6	-33.3	0.2	-33.3	0.00	0.00	0.00
3,400.0	1.56	179.60	3,399.5	-36.0	0.3	-36.0	0.00	0.00	0.00
3,500.0	1.56	179.60	3,499.5	-38.7	0.3	-38.7	0.00	0.00	0.00
3,600.0	1.56	179.60	3,599.4	-41.4	0.3	-41.4	0.00	0.00	0.00
3,700.0	1.56	179.60	3,699.4	-44.2	0.3	-44.2	0.00	0.00	0.00
3,800.0	1.56	179.60	3,799.4	-46.9	0.3	-46.9	0.00	0.00	0.00
3,900.0	1.56	179.60	3,899.3	-49.6	0.3	-49.6	0.00	0.00	0.00
4,000.0	1.56	179.60	3,999.3	-52.3	0.4	-52.3	0.00	0.00	0.00
4,100.0	1.56	179.60	4,099.3	-55.1	0.4	-55.1	0.00	0.00	0.00
4,200.0	1.56	179.60	4,199.2	-57.8	0.4	-57.8	0.00	0.00	0.00
4,300.0	1.56	179.60	4,299.2	-60.5	0.4	-60.5	0.00	0.00	0.00
4,400.0	1.56	179.60	4,399.1	-63.2	0.4	-63.2	0.00	0.00	0.00
4,500.0	1.56	179.60	4,499.1	-66.0	0.5	-66.0	0.00	0.00	0.00
4,600.0	1.56	179.60	4,599.1	-68.7	0.5	-68.7	0.00	0.00	0.00
4,700.0	1.56	179.60	4,699.0	-71.4	0.5	-71.4	0.00	0.00	0.00
4,800.0	1.56	179.60	4,799.0	-74.1	0.5	-74.1	0.00	0.00	0.00
4,900.0	1.56	179.60	4,899.0	-76.8	0.5	-76.9	0.00	0.00	0.00
5,000.0	1.56	179.60	4,998.9	-79.6	0.6	-79.6	0.00	0.00	0.00
5,100.0	1.56	179.60	5,098.9	-82.3	0.6	-82.3	0.00	0.00	0.00
5,200.0	1.56	179.60	5,198.9	-85.0	0.6	-85.0	0.00	0.00	0.00



EOG Resources, Inc.
Planning Report

Database: EDM 5000.1 Single User Db
Company: EOG Resources - Midland
Project: Eddy County, NM (NAD 27 NME)
Site: Terlingua 23 State
Well: #501H
Wellbore: OH
Design: Plan #0.1

Local Co-ordinate Reference: Well #501H
TVD Reference: KB = 25' @ 3474.0usft
MD Reference: KB = 25' @ 3474.0usft
North Reference: Grid
Survey Calculation Method: Minimum Curvature

Planned Survey									
Measured Depth (usft)	Inclination (°)	Azimuth (°)	Vertical Depth (usft)	+N/-S (usft)	+E/-W (usft)	Vertical Section (usft)	Dogleg Rate (°/100usft)	Build Rate (°/100usft)	Turn Rate (°/100usft)
5,300.0	1.56	179.60	5,298.8	-87.7	0.6	-87.7	0.00	0.00	0.00
5,400.0	1.56	179.60	5,398.8	-90.5	0.6	-90.5	0.00	0.00	0.00
5,500.0	1.56	179.60	5,498.7	-93.2	0.6	-93.2	0.00	0.00	0.00
5,600.0	1.56	179.60	5,598.7	-95.9	0.7	-95.9	0.00	0.00	0.00
5,700.0	1.56	179.60	5,698.7	-98.6	0.7	-98.6	0.00	0.00	0.00
5,800.0	1.56	179.60	5,798.6	-101.4	0.7	-101.4	0.00	0.00	0.00
5,900.0	1.56	179.60	5,898.6	-104.1	0.7	-104.1	0.00	0.00	0.00
6,000.0	1.56	179.60	5,998.6	-106.8	0.7	-106.8	0.00	0.00	0.00
6,100.0	1.56	179.60	6,098.5	-109.5	0.8	-109.5	0.00	0.00	0.00
6,200.0	1.56	179.60	6,198.5	-112.3	0.8	-112.3	0.00	0.00	0.00
6,300.0	1.56	179.60	6,298.4	-115.0	0.8	-115.0	0.00	0.00	0.00
6,400.0	1.56	179.60	6,398.4	-117.7	0.8	-117.7	0.00	0.00	0.00
6,500.0	1.56	179.60	6,498.4	-120.4	0.8	-120.4	0.00	0.00	0.00
6,600.0	1.56	179.60	6,598.3	-123.1	0.9	-123.1	0.00	0.00	0.00
6,700.0	1.56	179.60	6,698.3	-125.9	0.9	-125.9	0.00	0.00	0.00
6,800.0	1.56	179.60	6,798.3	-128.6	0.9	-128.6	0.00	0.00	0.00
6,900.0	1.56	179.60	6,898.2	-131.3	0.9	-131.3	0.00	0.00	0.00
7,000.0	1.56	179.60	6,998.2	-134.0	0.9	-134.0	0.00	0.00	0.00
7,100.0	1.56	179.60	7,098.1	-136.8	1.0	-136.8	0.00	0.00	0.00
7,200.0	1.56	179.60	7,198.1	-139.5	1.0	-139.5	0.00	0.00	0.00
7,300.0	1.56	179.60	7,298.1	-142.2	1.0	-142.2	0.00	0.00	0.00
7,400.0	1.56	179.60	7,398.0	-144.9	1.0	-144.9	0.00	0.00	0.00
7,509.6	1.56	179.60	7,507.6	-147.9	1.0	-147.9	0.00	0.00	0.00
7,525.0	0.29	1.21	7,523.0	-148.1	1.0	-148.1	12.00	-8.28	-1,158.97
7,550.0	3.29	359.97	7,548.0	-147.3	1.0	-147.3	12.00	12.00	-4.96
7,575.0	6.29	359.91	7,572.9	-145.2	1.0	-145.2	12.00	12.00	-0.23
7,600.0	9.29	359.89	7,597.7	-141.8	1.0	-141.8	12.00	12.00	-0.08
7,625.0	12.29	359.88	7,622.2	-137.2	1.0	-137.2	12.00	12.00	-0.04
7,650.0	15.29	359.87	7,646.5	-131.2	1.0	-131.2	12.00	12.00	-0.03
7,675.0	18.29	359.87	7,670.4	-124.0	1.0	-124.0	12.00	12.00	-0.02
7,700.0	21.29	359.87	7,693.9	-115.5	1.0	-115.5	12.00	12.00	-0.01
7,725.0	24.29	359.87	7,717.0	-105.8	0.9	-105.8	12.00	12.00	-0.01
7,750.0	27.29	359.86	7,739.5	-95.0	0.9	-95.0	12.00	12.00	-0.01
7,775.0	30.29	359.86	7,761.4	-82.9	0.9	-82.9	12.00	12.00	-0.01
7,800.0	33.29	359.86	7,782.7	-69.8	0.9	-69.8	12.00	12.00	-0.01
7,825.0	36.29	359.86	7,803.2	-55.5	0.8	-55.5	12.00	12.00	0.00
7,850.0	39.29	359.86	7,822.9	-40.2	0.8	-40.2	12.00	12.00	0.00
7,875.0	42.29	359.86	7,841.9	-23.9	0.7	-23.9	12.00	12.00	0.00
7,900.0	45.29	359.86	7,859.9	-6.6	0.7	-6.6	12.00	12.00	0.00
7,925.0	48.29	359.86	7,877.0	11.7	0.7	11.7	12.00	12.00	0.00
7,950.0	51.29	359.86	7,893.2	30.8	0.6	30.8	12.00	12.00	0.00
7,975.0	54.29	359.86	7,908.3	50.7	0.6	50.7	12.00	12.00	0.00
8,000.0	57.29	359.85	7,922.3	71.3	0.5	71.3	12.00	12.00	0.00
8,025.0	60.29	359.85	7,935.3	92.7	0.5	92.7	12.00	12.00	0.00
8,050.0	63.29	359.85	7,947.1	114.7	0.4	114.7	12.00	12.00	0.00
8,075.0	66.29	359.85	7,957.8	137.4	0.3	137.4	12.00	12.00	0.00
8,083.4	67.30	359.85	7,961.1	145.1	0.3	145.1	12.00	12.00	0.00
FTP (Terlingua 23 State #501H)									
8,100.0	69.29	359.85	7,967.2	160.5	0.3	160.5	12.00	12.00	0.00
8,125.0	72.29	359.85	7,975.4	184.1	0.2	184.1	12.00	12.00	0.00
8,150.0	75.29	359.85	7,982.4	208.1	0.2	208.1	12.00	12.00	0.00
8,175.0	78.29	359.85	7,988.1	232.4	0.1	232.4	12.00	12.00	0.00
8,200.0	81.29	359.85	7,992.6	257.0	0.0	257.0	12.00	12.00	0.00



EOG Resources, Inc.
Planning Report

Database: EDM 5000.1 Single User Db
 Company: EOG Resources - Midland
 Project: Eddy County, NM (NAD 27 NME)
 Site: Terlingua 23 State
 Well: #501H
 Wellbore: OH
 Design: Plan #0.1

Local Co-ordinate Reference: Well #501H
 TVD Reference: KB = 25' @ 3474.0usft
 MD Reference: KB = 25' @ 3474.0usft
 North Reference: Grid
 Survey Calculation Method: Minimum Curvature

Planned Survey										
Measured Depth (usft)	Inclination (°)	Azimuth (°)	Vertical Depth (usft)	+N/-S (usft)	+E/-W (usft)	Vertical Section (usft)	Dogleg Rate (°/100usft)	Build Rate (°/100usft)	Turn Rate (°/100usft)	
8,225.0	84.29	359.85	7,995.7	281.8	0.0	281.8	12.00	12.00	0.00	
8,250.0	87.29	359.85	7,997.5	306.8	-0.1	306.8	12.00	12.00	0.00	
8,275.0	90.29	359.85	7,998.1	331.8	-0.2	331.8	12.00	12.00	0.00	
8,280.9	91.00	359.85	7,998.0	337.7	-0.2	337.7	12.00	12.00	0.00	
8,300.0	91.00	359.85	7,997.7	356.8	-0.2	356.8	0.00	0.00	0.00	
8,400.0	91.00	359.85	7,995.9	456.7	-0.5	456.7	0.00	0.00	0.00	
8,500.0	91.00	359.85	7,994.2	556.7	-0.8	556.7	0.00	0.00	0.00	
8,600.0	91.00	359.85	7,992.4	656.7	-1.0	656.7	0.00	0.00	0.00	
8,700.0	91.00	359.85	7,990.7	756.7	-1.3	756.7	0.00	0.00	0.00	
8,800.0	91.00	359.85	7,988.9	856.7	-1.5	856.7	0.00	0.00	0.00	
8,900.0	91.00	359.85	7,987.2	956.7	-1.8	956.7	0.00	0.00	0.00	
9,000.0	91.00	359.85	7,985.4	1,056.6	-2.1	1,056.6	0.00	0.00	0.00	
9,100.0	91.00	359.85	7,983.7	1,156.6	-2.3	1,156.6	0.00	0.00	0.00	
9,200.0	91.00	359.85	7,982.0	1,256.6	-2.6	1,256.6	0.00	0.00	0.00	
9,300.0	91.00	359.85	7,980.2	1,356.6	-2.8	1,356.6	0.00	0.00	0.00	
9,400.0	91.00	359.85	7,978.5	1,456.6	-3.1	1,456.6	0.00	0.00	0.00	
9,500.0	91.00	359.85	7,976.7	1,556.6	-3.4	1,556.6	0.00	0.00	0.00	
9,600.0	91.00	359.85	7,975.0	1,656.6	-3.6	1,656.6	0.00	0.00	0.00	
9,700.0	91.00	359.85	7,973.2	1,756.5	-3.9	1,756.5	0.00	0.00	0.00	
9,800.0	91.00	359.85	7,971.5	1,856.5	-4.2	1,856.5	0.00	0.00	0.00	
9,900.0	91.00	359.85	7,969.7	1,956.5	-4.4	1,956.5	0.00	0.00	0.00	
10,000.0	91.00	359.85	7,968.0	2,056.5	-4.7	2,056.5	0.00	0.00	0.00	
10,100.0	91.00	359.85	7,966.3	2,156.5	-4.9	2,156.5	0.00	0.00	0.00	
10,200.0	91.00	359.85	7,964.5	2,256.5	-5.2	2,256.5	0.00	0.00	0.00	
10,300.0	91.00	359.85	7,962.8	2,356.4	-5.5	2,356.4	0.00	0.00	0.00	
10,400.0	91.00	359.85	7,961.0	2,456.4	-5.7	2,456.4	0.00	0.00	0.00	
10,500.0	91.00	359.85	7,959.3	2,556.4	-6.0	2,556.4	0.00	0.00	0.00	
10,600.0	91.00	359.85	7,957.5	2,656.4	-6.3	2,656.4	0.00	0.00	0.00	
10,700.0	91.00	359.85	7,955.8	2,756.4	-6.5	2,756.4	0.00	0.00	0.00	
10,800.0	91.00	359.85	7,954.0	2,856.4	-6.8	2,856.4	0.00	0.00	0.00	
10,900.0	91.00	359.85	7,952.3	2,956.3	-7.0	2,956.4	0.00	0.00	0.00	
11,000.0	91.00	359.85	7,950.5	3,056.3	-7.3	3,056.3	0.00	0.00	0.00	
11,100.0	91.00	359.85	7,948.8	3,156.3	-7.6	3,156.3	0.00	0.00	0.00	
11,200.0	91.00	359.85	7,947.1	3,256.3	-7.8	3,256.3	0.00	0.00	0.00	
11,300.0	91.00	359.85	7,945.3	3,356.3	-8.1	3,356.3	0.00	0.00	0.00	
11,400.0	91.00	359.85	7,943.6	3,456.3	-8.3	3,456.3	0.00	0.00	0.00	
11,500.0	91.00	359.85	7,941.8	3,556.3	-8.6	3,556.3	0.00	0.00	0.00	
11,600.0	91.00	359.85	7,940.1	3,656.2	-8.9	3,656.3	0.00	0.00	0.00	
11,700.0	91.00	359.85	7,938.3	3,756.2	-9.1	3,756.2	0.00	0.00	0.00	
11,800.0	91.00	359.85	7,936.6	3,856.2	-9.4	3,856.2	0.00	0.00	0.00	
11,900.0	91.00	359.85	7,934.8	3,956.2	-9.7	3,956.2	0.00	0.00	0.00	
12,000.0	91.00	359.85	7,933.1	4,056.2	-9.9	4,056.2	0.00	0.00	0.00	
12,100.0	91.00	359.85	7,931.3	4,156.2	-10.2	4,156.2	0.00	0.00	0.00	
12,200.0	91.00	359.85	7,929.6	4,256.1	-10.4	4,256.2	0.00	0.00	0.00	
12,300.0	91.00	359.85	7,927.9	4,356.1	-10.7	4,356.1	0.00	0.00	0.00	
12,400.0	91.00	359.85	7,926.1	4,456.1	-11.0	4,456.1	0.00	0.00	0.00	
12,500.0	91.00	359.85	7,924.4	4,556.1	-11.2	4,556.1	0.00	0.00	0.00	
12,600.0	91.00	359.85	7,922.6	4,656.1	-11.5	4,656.1	0.00	0.00	0.00	
12,700.0	91.00	359.85	7,920.9	4,756.1	-11.7	4,756.1	0.00	0.00	0.00	
12,795.9	91.00	359.85	7,919.2	4,852.0	-12.0	4,852.0	0.00	0.00	0.00	

PSHL (Terlingua 23 State #501H)



EOG Resources, Inc.

Planning Report

Database: EDM 5000.1 Single User Db
Company: EOG Resources - Midland
Project: Eddy County, NM (NAD 27 NME)
Site: Terlingua 23 State
Well: #501H
Wellbore: OH
Design: Plan #0.1

Local Co-ordinate Reference: Well #501H
TVD Reference: KB = 25' @ 3474.0usft
MD Reference: KB = 25' @ 3474.0usft
North Reference: Grid
Survey Calculation Method: Minimum Curvature

Design Targets

Target Name - hit/miss target - Shape	Dip Angle (°)	Dip Dir. (°)	TVD (usft)	+N/-S (usft)	+E/-W (usft)	Northing (usft)	Easting (usft)	Latitude	Longitude
PBHL (Terlingua 23 Stat - plan hits target center - Point	0.00	0.00	7,919.2	4,852.0	-12.0	632,867.00	590,990.00	32° 44' 22.189 N	104° 2' 14.687 W
FTP (Terlingua 23 State - plan misses target center by 39.9usft at 8083.4usft MD (7961.1 TVD, 145.1 N, 0.3 E) - Point	0.00	0.00	7,998.0	130.0	0.0	628,145.00	591,002.00	32° 43' 35.462 N	104° 2' 14.701 W

EOG RESOURCES, INC.
TERLINGUA 23 STATE #501H

Hydrogen Sulfide Plan Summary

- A. All personnel shall receive proper H₂S training in accordance with Onshore Order III.C.3.a.
- B. Briefing Area: two perpendicular areas will be designated by signs and readily accessible.
- C. Required Emergency Equipment:

- Well control equipment
 - a. Flare line 150' from wellhead to be ignited by flare gun.
 - b. Choke manifold with a remotely operated choke.
 - c. Mud/gas separator

- Protective equipment for essential personnel.

Breathing apparatus:

- a. Rescue Packs (SCBA) — 1 unit shall be placed at each breathing area, 2 shall be stored in the safety trailer.
- b. Work/Escape packs — 4 packs shall be stored on the rig floor th sufficient air hose not to restrict work activity.
- c. Emergency Escape Packs — 4 packs shall be stored in the doghouse for emergency evacuation.

Auxiliary Rescue Equipment:

- a. Stretcher
- b. Two OSHA full body harness
- c. 100 ft 5/8 inch OSHA approved rope
- d. 1-20# class ABC fire extinguisher

- H₂S detection and monitoring equipment:

The stationary detector with three sensors will be placed in the upper dog house if equipped, set to visually alarm @ 10 ppm and audible @ 14 ppm. Calibrate a minimum of every 30 days or as needed. The sensors will be placed in the following places: Rig floor / Bell nipple / End of flow line or where well bore fluid is being discharged.

(Gas sample tubes will be stored in the safety trailer)

- Visual warning systems.

- a. One color code condition sign will be placed at the entrance to the site reflecting the possible conditions at the site.
- b. A colored condition flag will be on display, reflecting the current condition at the site at the time.
- c. Two wind socks will be placed in strategic locations, visible from all angles.

EOG RESOURCES, INC.
TERLINGUA 23 STATE #501H

- **Mud program:**
The mud program has been designed to minimize the volume of H₂S circulated to surface. The operator will have the necessary mud products to minimize hazards while drilling in H₂S bearing zones.

- **Metallurgy:**
All drill strings, casings, tubing, wellhead, blowout preventer, drilling spool, kill lines, choke manifold and lines, and valves shall be suitable for H₂S service.

- **Communication:**
Communication will be via cell phones and land lines where available.

EOG RESOURCES, INC.
TERLINGUA 23 STATE #501H

Emergency Assistance Telephone List

PUBLIC SAFETY:	911 or
Eddy County Sheriff's Department	(575) 887-7551
Kent Waller	
Fire Department:	
Carlsbad	(575) 885-3125
Artesia	(575) 746-5050
Hospitals:	
Carlsbad	(575) 887-4121
Artesia	(575) 748-3333
Hobbs	(575) 392-1979
Dept. of Public Safety/Carlsbad	(575) 748-9718
Highway Department	(575) 885-3281
New Mexico Oil Conservation	(575) 476-3440
U.S. Dept. of Labor	(575) 887-1174

EOG Resources, Inc.

EOG / Midland Office (432) 686-3600

Company Drilling Consultants:

David Dominique Cell (985) 518-5839
Mike Vann Cell (817) 980-5507

Drilling Engineer

Kirby Castille Office (432) 686-3657
Cell (432) 559-4987

Drilling Manager

Heath Work Office (432) 686-6716
Cell (903) 780-1179

Drilling Superintendent

Jason Fitzgerald Office (432) 848-9029
Cell (318) 347-3916

H&P Drilling

H&P Drilling Office (432) 563-5757
H&P 651 Drilling Rig Rig (903) 509-7131

Tool Pusher:

Johnathan Craig Cell (817) 760-6374
Brad Garrett

Safety

Brian Chandler (HSE Manager) Office (432) 686-3695
Cell (817) 239-0251