

District I  
1625 N. French Dr., Hobbs, NM 88240  
Phone: (575) 393-6161 Fax: (575) 393-0720

District II  
811 S. First St., Artesia, NM 88210  
Phone: (575) 748-1283 Fax: (575) 748-9720

District III  
1000 Rio Brazos Road, Aztec, NM 87410  
Phone: (505) 334-6178 Fax: (505) 334-6170

District IV  
1220 S. St. Francis Dr., Santa Fe, NM 87505  
Phone: (505) 476-3460 Fax: (505) 476-3462

State of New Mexico

Form C-101  
Revised July 18, 2013

Energy Minerals and Natural Resources

**NM OIL CONSERVATION**  
Oil Conservation Division  
ARTESIA DISTRICT  
1220 South St. Francis Dr.  
Santa Fe, NM 87505  
MAR 06 2017

☒ AMENDED REPORT  
(convert oil well to SWD)

APPLICATION FOR PERMIT TO DRILL, RE-ENTER, DEEPEN, PLUGBACK, OR ADD A ZONE

Operator Name and Address Rockcliff Operating New Mexico LLC 1301 McKinney, Suite 1300 Houston TX 77010 (713) 351-0500		UGRID Number 371115
Property Code 316159		API Number 30-015-26368
Property Name South Culebra Bluff 23		Well No. 12

7. Surface Location

UL - Lot	Section	Township	Range	Lot Idn	Feet from	N/S Line	Feet From	E/W Line	County
H	23	23S	28E		2140	N	400	E	Eddy

8. Proposed Bottom Hole Location

UL - Lot	Section	Township	Range	Lot Idn	Feet from	N/S Line	Feet From	E/W Line	County

9. Pool Information

Pool Name	Pool Code
SWD; Cherry Canyon	97003

Additional Well Information

11. Work Type P	12. Well Type S	13. Cable/Rotary R	14. Lease Type P	15. Ground Level Elevation 2993'
16. Multiple N	17. Proposed Depth PBD = 4705'	18. Formation Cherry Canyon	19. Contractor to be determined	20. Spud Date upon C-108 approval
Depth to Ground water 66' in C 03146		Distance from nearest fresh water well 1131' NW of C 03146		Distance to nearest surface water ≈250' NW of irrigation canal

☒ We will be using a closed-loop system in lieu of lined pits

21. Proposed Casing and Cement Program

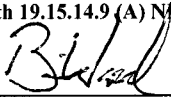
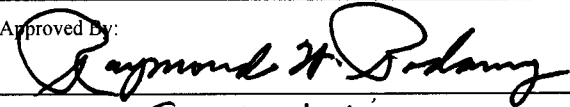
Type	Hole Size	Casing Size	Casing Weight/ft	Setting Depth	Sacks of Cement	Estimated TOC
Surface	12.25"	8.625"	24	579'	350	GL
Production	7.875"	5.5"	15.5	6350'	1795	GL

Casing/Cement Program: Additional Comments

Will set CIBP @ 4740', add 35' cmt atop CIBP to 4705', and perf Cherry Canyon from 4665' to 4260'
---

22. Proposed Blowout Prevention Program

Type	Working Pressure	Test Pressure	Manufacturer
annular & rams	3000 psi	3000 psi	to be determined

23. I hereby certify that the information given above is true and complete to the best of my knowledge and belief. I further certify that I have complied with 19.15.14.9 (A) NMAC <input type="checkbox"/> and/or 19.15.14.9 (B) NMAC <input type="checkbox"/> , if applicable. Signature:  Printed name: Brian Wood Title: Consultant E-mail Address: brian@permitswest.com Date: 3-4-17	OIL CONSERVATION DIVISION	
	Approved By: 	
	Title: <u>Geologist</u>	
	Approved Date: <u>3-6-2017</u>	Expiration Date: <u>3-6-2019</u>
	Conditions of Approval Attached	

District I  
1625 N. French Dr., Hobbs, NM 88240  
Phone: (575) 393-6161 Fax: (575) 393-0720  
District II  
811 S. First St., Artesia, NM 88210  
Phone: (575) 748-1283 Fax: (575) 748-9720  
District III  
1000 Rio Brazos Road, Aztec, NM 87410  
Phone: (505) 334-6178 Fax: (505) 334-6170  
District IV  
1220 S. St. Francis Dr., Santa Fe, NM 87505  
Phone: (505) 476-3460 Fax: (505) 476-3462

State of New Mexico  
Energy, Minerals & Natural Resources Department  
OIL CONSERVATION DIVISION  
1220 South St. Francis Dr.  
Santa Fe, NM 87505

Form C-102  
Revised August 1, 2011  
Submit one copy to appropriate  
District Office

X AMENDED REPORT  
(change from Brushy  
Canyon oil well)

WELL LOCATION AND ACREAGE DEDICATION PLAT

<sup>1</sup> 30-015-26368	<sup>2</sup> 97003	<sup>3</sup> SWD; Cherry Canyon
<sup>4</sup> 316159	<sup>5</sup> South Culebra Bluff 23	<sup>6</sup> 12
<sup>7</sup> 371115	Rockcliff Operating New Mexico LLC	<sup>9</sup> 2993'

<sup>10</sup> Surface Location

H	23	23 S	28 E	Lot 1dn	2140	North	400	East	Eddy County
---	----	------	------	---------	------	-------	-----	------	-------------

<sup>11</sup> Bottom Hole Location If Different From Surface

UL or lot no.	Section	Township	Range	Lot 1dn	Feet from the	North/South line	Feet from the	East/West line	County
<sup>12</sup> Dedicated Acres	<sup>13</sup> Joint or Infill	<sup>14</sup> Consolidation Code		<sup>15</sup> Order No.					

No allowable will be assigned to this completion until all interests have been consolidated or a non-standard unit has been approved by the division.

<div data-bbox="159 1089 505 1220" data-label="Text"> <p>NM OIL CONSERVATION ARTESIA DISTRICT MAR 06 2017</p> </div> <div data-bbox="271 1257 423 1299" data-label="Text"> <p>RECEIVED</p> </div>	<div data-bbox="950 993 1047 1459" data-label="Diagram"> </div>	<p><sup>17</sup> OPERATOR CERTIFICATION</p> <p><i>I hereby certify that the information contained herein is true and complete to the best of my knowledge and belief, and that this organization either owns a working interest or unleased mineral interest in the land including the proposed bottom hole location or has a right to drill this well at this location pursuant to a contract with an owner of such a mineral or working interest, or to a voluntary pooling agreement or a compulsory pooling order heretofore entered by the division.</i></p> <p>Signature: <i>Brian Wood</i> Date: 3-4-17</p> <p>Printed Name: Brian Wood</p> <p>E-mail Address: brian@permitswest.com</p> <p>(505) 466-8120</p>
		<p><sup>18</sup> SURVEYOR CERTIFICATION</p> <p><i>I hereby certify that the well location shown on this plat was plotted from field notes of actual surveys made by me or under my supervision, and that the same is true and correct to the best of my belief.</i></p> <p>5-21-90</p> <p>Date of Survey</p> <p>Signature and Seal of Professional Surveyor:</p> <p>Original survey by John West attached</p> <p>Certificate Number</p>

Submit to Appropriate  
District Office  
State Lease - 4 copies  
Fee Lease - 3 copies

State of New Mexico  
Energy, Minerals and Natural Resources Department

Form C-102  
Revised 1-1-89

OIL CONSERVATION DIVISION

P.O. Box 2088

Santa Fe, New Mexico 87504-2088

DISTRICT I  
P.O. Box 1980, Hobbs, NM 88240

DISTRICT II  
P.O. Drawer DD, Artesia, NM 88210

DISTRICT III  
1000 Rio Brizos Rd., Aztec, NM 87410

WELL LOCATION AND ACREAGE DEDICATION PLAT

All Distances must be from the outer boundaries of the section

Operator R. B. OPERATING CO.		Lease S C B 23		Well No. 12
Unit Letter H	Section 23	Township 23 South	Range 28 East	County - Eddy
NMPM				

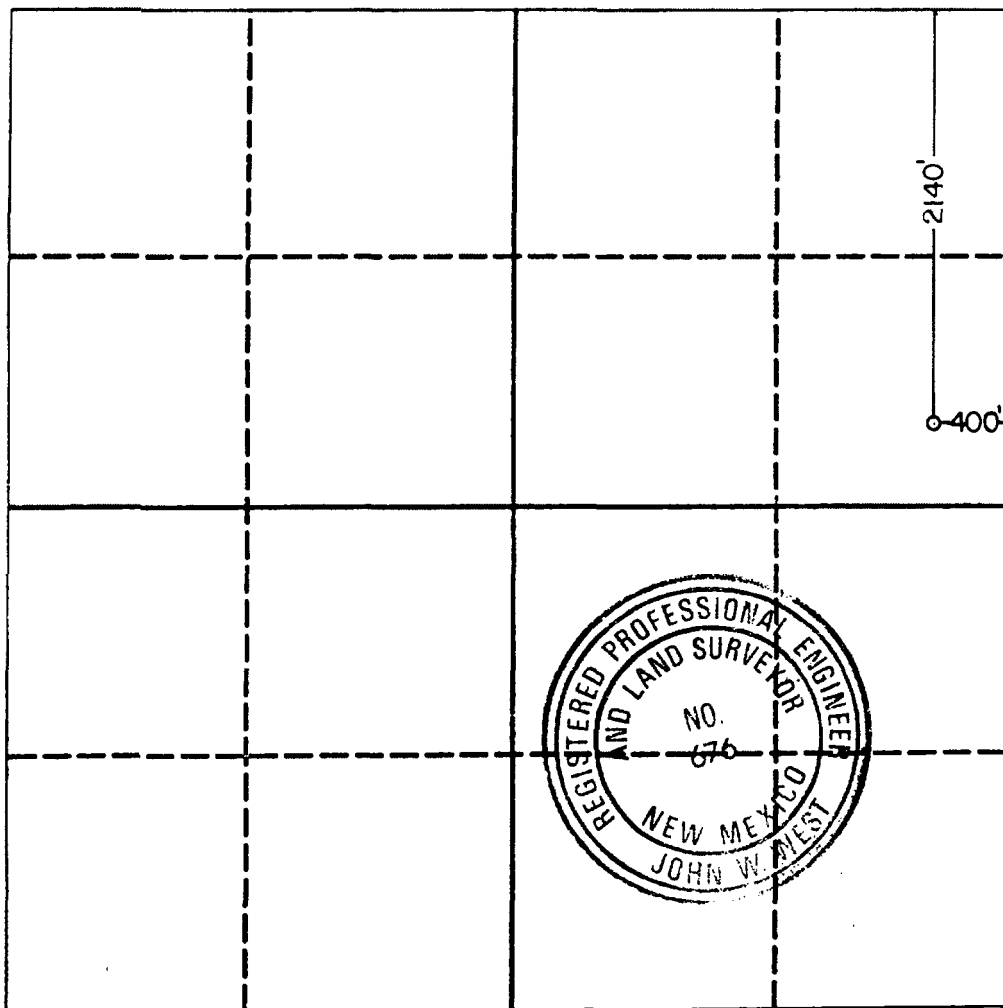
Actual Footage Location of Well:

2140	feet from the	North	line and	400	feet from the	East	line
Ground level Elev. 2993.2		Producing Formation Delaware		Pool E. Loving (Delaware)		Dedicated Acreage: 40 Acres	

1. Outline the acreage dedicated to the subject well by colored pencil or hatchure marks on the plat below.
2. If more than one lease is dedicated to the well, outline each and identify the ownership thereof (both as to working interest and royalty).
3. If more than one lease of different ownership is dedicated to the well, have the interest of all owners been consolidated by communitization, unitization, force-pooling, etc.?  
☐ Yes ☐ No If answer is "yes" type of consolidation \_\_\_\_\_

If answer is "no" list the owners and tract descriptions which have actually been consolidated. (Use reverse side of this form if necessary.) \_\_\_\_\_

No allowable will be assigned to the well until all interests have been consolidated (by communitization, unitization, forced-pooling, or otherwise) or until a non-standard unit, eliminating such interest, has been approved by the Division.



OPERATOR CERTIFICATION

I hereby certify that the information contained herein is true and complete to the best of my knowledge and belief.

Signature 
Printed Name F.D. Schoch
Position Area Manager
Company RB Operating Company
Date 5/25/90

SURVEYOR CERTIFICATION

I hereby certify that the well location shown on this plat was plotted from field notes of actual surveys made by me or under my supervision, and that the same is true and correct to the best of my knowledge and belief.

Date Surveyed May 21, 1990
Signature & Seal of Professional Surveyor 
Certificate No. JOHN W. WEST, 676 RONALD J. EIDSON, 3239