

District I  
1625 N. French Dr., Hobbs, NM 88240  
Phone: (575) 393-6161 Fax: (575) 393-0720  
District II  
811 S. First St., Artesia, NM 88210  
Phone: (575) 748-1283 Fax: (575) 748-9720  
District III  
1000 Rio Brazos Road, Aztec, NM 87410  
Phone: (505) 334-6178 Fax: (505) 334-6170  
District IV  
1220 S. St. Francis Dr., Santa Fe, NM 87505  
Phone: (505) 476-3460 Fax: (505) 476-3462

State of New Mexico  
Energy, Minerals & Natural Resources Department  
OIL CONSERVATION DIVISION  
1220 South St. Francis Dr.  
Santa Fe, NM 87505

Form C-102  
Revised August 1, 2011  
Submit one copy to appropriate  
District Office

☐ AMENDED REPORT

WELL LOCATION AND ACREAGE DEDICATION PLAT

<sup>1</sup> API Number <b>30-015-44084</b>	<sup>2</sup> Pool Code <b>90220 74/160</b>	<sup>3</sup> Pool Name <b>Carl'sbad East</b> <b>Purple Sage; Wolfcamp (GAS)</b>
<sup>4</sup> Property Code <b>317452</b>	<sup>5</sup> Property Name <b>HENRY GRANDI</b>	<sup>6</sup> Well Number <b>1H</b>
<sup>7</sup> OGRID No. <b>371127</b>	<sup>8</sup> Operator Name <b>BLACK MOUNTAIN OPERATING, LLC</b>	<sup>9</sup> Elevation <b>3074'</b>

<sup>10</sup> Surface Location

UL or lot no.	Section	Township	Range	Lot Idn	Feet from the	North/South line	Feet from the	East/West line	County
P	26	22 SOUTH	27 EAST, N.M.P.M.		1063'	SOUTH	191'	EAST	EDDY

<sup>11</sup> Bottom Hole Location If Different From Surface

UL or lot no.	Section	Township	Range	Lot Idn	Feet from the	North/South line	Feet from the	East/West line	County
M	26	22 SOUTH	27 EAST, N.M.P.M.		679'	SOUTH	330'	WEST	EDDY

<sup>12</sup> Dedicated Acres	<sup>13</sup> Joint or Infill	<sup>14</sup> Consolidation Code	<sup>15</sup> Order No.
-------------------------------	-------------------------------	----------------------------------	-------------------------

No allowable will be assigned to this completion until all interests have been consolidated or a non-standard unit has been approved by the division.

<p><sup>16</sup></p> <p>CORNER COORDINATES TABLE (NAD 27)</p> <p>A - Y=495998.39, X=550956.46 B - Y=496049.21, X=556289.71 C - Y=493329.65, X=550989.55 D - Y=493348.46, X=556232.89</p> <p>26</p>		<p><sup>17</sup> OPERATOR CERTIFICATION</p> <p>I hereby certify that the information contained herein is true and complete to the best of my knowledge and belief, and that this organization either owns a working interest or unleased mineral interest in the land including the proposed bottom hole location or has a right to drill this well at this location pursuant to a contract with an owner of such a mineral or working interest, or to a voluntary pooling agreement or a compulsory pooling order heretofore entered by the division.</p> <p>03/02/2017 Date</p> <p>Signature Denise L. White Printed Name denise.white@blackmtn.com E-mail Address</p>									
<p>A</p> <table border="1"> <tr> <th>PROPOSED BOTTOM HOLE LOCATION</th> <th>PROPOSED PENETRATION POINT</th> <th>HENRI GRANDI 1H WELL</th> </tr> <tr> <td>X= 551.311 NAD 27 Y= 494.010 LAT. 32.358039 LONG. 104.167162</td> <td>X= 555.917 NAD 27 Y= 494.026 LAT. 32.358064 LONG. 104.152245</td> <td>X= 556.064 NAD 27 Y= 494.410 LAT. 32.359119 LONG. 104.151767</td> </tr> <tr> <td>X= 592.493 NAD83 Y= 494.069 LAT. 32.358158 LONG. 104.167662</td> <td>X= 597.099 NAD83 Y= 494.086 LAT. 32.358183 LONG. 104.152745</td> <td>X= 597.246 NAD83 Y= 494.470 LAT. 32.359238 LONG. 104.152267 ELEVATION +3074' NAVD 88</td> </tr> </table> <p>B</p>		PROPOSED BOTTOM HOLE LOCATION	PROPOSED PENETRATION POINT	HENRI GRANDI 1H WELL	X= 551.311 NAD 27 Y= 494.010 LAT. 32.358039 LONG. 104.167162	X= 555.917 NAD 27 Y= 494.026 LAT. 32.358064 LONG. 104.152245	X= 556.064 NAD 27 Y= 494.410 LAT. 32.359119 LONG. 104.151767	X= 592.493 NAD83 Y= 494.069 LAT. 32.358158 LONG. 104.167662	X= 597.099 NAD83 Y= 494.086 LAT. 32.358183 LONG. 104.152745	X= 597.246 NAD83 Y= 494.470 LAT. 32.359238 LONG. 104.152267 ELEVATION +3074' NAVD 88	<p><sup>18</sup> SURVEYOR CERTIFICATION</p> <p>I hereby certify that the well location shown on this plat was plotted from field notes of actual surveys made by me or under my supervision, and that the same is true and correct to the best of my belief.</p> <p>2-21-2017 Date of Survey</p> <p>Signature and Seal of Professional Surveyor 23006 Certificate Number</p>
PROPOSED BOTTOM HOLE LOCATION	PROPOSED PENETRATION POINT	HENRI GRANDI 1H WELL									
X= 551.311 NAD 27 Y= 494.010 LAT. 32.358039 LONG. 104.167162	X= 555.917 NAD 27 Y= 494.026 LAT. 32.358064 LONG. 104.152245	X= 556.064 NAD 27 Y= 494.410 LAT. 32.359119 LONG. 104.151767									
X= 592.493 NAD83 Y= 494.069 LAT. 32.358158 LONG. 104.167662	X= 597.099 NAD83 Y= 494.086 LAT. 32.358183 LONG. 104.152745	X= 597.246 NAD83 Y= 494.470 LAT. 32.359238 LONG. 104.152267 ELEVATION +3074' NAVD 88									

Ref.

**District I**  
1625 N French Dr., Hobbs, NM 88240  
Phone: (575) 393-6161 Fax: (575) 393-0720  
**District II**  
811 S First St., Artesia, NM 88210  
Phone: (575) 748-1283 Fax: (575) 748-9720  
**District III**  
1000 Rio Brazos Road, Aztec, NM 87410  
Phone: (505) 334-6178 Fax: (505) 334-6170  
**District IV**  
1220 S St Francis Dr., Santa Fe, NM 87505  
Phone: (505) 476-3460 Fax: (505) 476-3462

NEW MEXICO CONSERVATION  
ARTESIA DISTRICT  
State of New Mexico  
Energy, Minerals & Natural Resources Department  
OIL CONSERVATION DIVISION  
1220 South St. Francis Dr.  
Santa Fe, NM 87505

Form C-102  
Revised August 1, 2011  
Submit one copy to appropriate  
District Office

☐ AMENDED REPORT

**WELL LOCATION AND ACREAGE DEDICATION PLAT**

1 API Number	2 Pool Code 98220	3 Pool Name Purple Sage; Wolfcamp (GAS)
4 Property Code	5 Property Name HENRI GRANDI	6 Well Number 1H
7 OGRID No 371127	8 Operator Name BLACK MOUNTAIN OPERATING, LLC	9 Elevation 3074'

**10 Surface Location**

UL or lot no.	Section	Township	Range	Lot Idn	Feet from the	North/South line	Feet from the	East/West line	County
P	26	22 SOUTH	27 EAST, N.M.P.M.		1063'	SOUTH	191'	EAST	EDDY

**11 Bottom Hole Location If Different From Surface**

UL or lot no.	Section	Township	Range	Lot Idn	Feet from the	North/South line	Feet from the	East/West line	County
M	26	22 SOUTH	27 EAST, N.M.P.M.		679'	SOUTH	330'	WEST	EDDY

12 Dedicated Acres 160.00	13 Joint or Infill	14 Consolidation Code	15 Order No.
------------------------------	--------------------	-----------------------	--------------

No allowable will be assigned to this completion until all interests have been consolidated or a non-standard unit has been approved by the division.

<p style="text-align: center;">16</p> <p style="text-align: center;">CORNER COORDINATES TABLE (NAD 27)</p> <p style="text-align: center;">A - Y=495998.39, X=550956.48 B - Y=496049.21, X=556289.71 C - Y=493329.85, X=550989.55 D - Y=493348.48, X=556232.89</p> <p style="text-align: center;">26</p> <table border="1" style="width: 100%; border-collapse: collapse;"> <tr> <th style="width: 33%;">PROPOSED BOTTOM HOLE LOCATION</th> <th style="width: 33%;">PROPOSED PENETRATION POINT</th> <th style="width: 33%;">HENRI GRANDI 1H WELL</th> </tr> <tr> <td>X= 551,311 NAD 27 Y= 494,010 LAT. 32.358039 LONG. 104.167162</td> <td>X= 555,917 NAD 27 Y= 494,026 LAT. 32.358064 LONG. 104.152245</td> <td>X= 556,064 NAD 27 Y= 494,410 LAT. 32.359119 LONG. 104.151767</td> </tr> <tr> <td>X= 592,493 NAD83 Y= 494,069 LAT. 32.358158 LONG. 104.167662</td> <td>X= 597,099 NAD83 Y= 494,086 LAT. 32.358183 LONG. 104.152745</td> <td>X= 597,246 NAD83 Y= 494,470 LAT. 32.359238 LONG. 104.152267</td> </tr> <tr> <td colspan="3" style="text-align: center;">ELEVATION +3074' NAVD 88</td> </tr> </table> <p style="text-align: center;">A B</p> <p style="text-align: center;">Proposed Producing Interval</p> <p style="text-align: center;">S 20°56'38"W 411.31'</p> <p style="text-align: center;">S 89°47'40"W 4,605.96'</p> <p style="text-align: center;">Proposed Penetration Point 330' FEL, 679' FSL</p> <p style="text-align: center;">C D</p>	PROPOSED BOTTOM HOLE LOCATION	PROPOSED PENETRATION POINT	HENRI GRANDI 1H WELL	X= 551,311 NAD 27 Y= 494,010 LAT. 32.358039 LONG. 104.167162	X= 555,917 NAD 27 Y= 494,026 LAT. 32.358064 LONG. 104.152245	X= 556,064 NAD 27 Y= 494,410 LAT. 32.359119 LONG. 104.151767	X= 592,493 NAD83 Y= 494,069 LAT. 32.358158 LONG. 104.167662	X= 597,099 NAD83 Y= 494,086 LAT. 32.358183 LONG. 104.152745	X= 597,246 NAD83 Y= 494,470 LAT. 32.359238 LONG. 104.152267	ELEVATION +3074' NAVD 88			<p style="text-align: center;">17 OPERATOR CERTIFICATION</p> <p><i>I hereby certify that the information contained herein is true and complete to the best of my knowledge and belief, and that this organization either owns a working interest or unleased mineral interest in the land including the proposed bottom hole location or has a right to drill this well at this location pursuant to a contract with an owner of such a mineral or working interest, or to a voluntary pooling agreement or a compulsory pooling order heretofore entered by the division.</i></p> <p style="text-align: right;">03/02/2017</p> <p>Signature: <i>Denise L. White</i> Date:</p> <p>Printed Name: Denise L. White</p> <p>E-mail Address: denise.white@blackmtn.com</p> <hr/> <p style="text-align: center;">18 SURVEYOR CERTIFICATION</p> <p><i>I hereby certify that the well location shown on this plat was plotted from field notes of actual surveys made by me or under my supervision, and that the same is true and correct to the best of my belief.</i></p> <p style="text-align: right;">2-21-2017</p> <p>Date of Survey: 2-21-2017</p> <p>Signature and Seal of Professional Surveyor: <i>[Signature]</i></p> <p style="text-align: center;">3-9-2017</p> <p style="text-align: center;">23006</p> <p>Certificate Number: 23006</p>
PROPOSED BOTTOM HOLE LOCATION	PROPOSED PENETRATION POINT	HENRI GRANDI 1H WELL											
X= 551,311 NAD 27 Y= 494,010 LAT. 32.358039 LONG. 104.167162	X= 555,917 NAD 27 Y= 494,026 LAT. 32.358064 LONG. 104.152245	X= 556,064 NAD 27 Y= 494,410 LAT. 32.359119 LONG. 104.151767											
X= 592,493 NAD83 Y= 494,069 LAT. 32.358158 LONG. 104.167662	X= 597,099 NAD83 Y= 494,086 LAT. 32.358183 LONG. 104.152745	X= 597,246 NAD83 Y= 494,470 LAT. 32.359238 LONG. 104.152267											
ELEVATION +3074' NAVD 88													

LEGEND	
	Section Line
	Centerline Access
	Existing Road
	Proposed Pad
	Powerline
	Fence Line
	Irrigation Ditch
	Calc. Corner

R 27 E

NW PAD CORNER		NE PAD CORNER	
X=	555,870 NAD 27	X=	556,220 NAD 27
Y=	494,684	Y=	494,677
ELEVATION +3075' NAVD 88		ELEVATION +3075' NAVD 88	
SW PAD CORNER		SE PAD CORNER	
X=	555,861 NAD 27	X=	556,210 NAD 27
Y=	494,235	Y=	494,228
ELEVATION +3075' NAVD 88		ELEVATION +3074' NAVD 88	
		HENRI GRANDI NO. 1H WELL	
		X=	556,064 NAD 27
		Y=	494,410
		LAT	32.359119
		LONG.	104.151767
		X=	597,246 NAD83
		Y=	494,470
		LAT.	32.359238
		LONG.	104.152267
		ELEVATION +3074' NAVD 88	

Sec. 25

CENTERLINE  
PROPOSED  
ACCESS ROAD  
25' x 138.39'  
±2.33 Rods  
±0.02 Acres

FOR THE EXCLUSIVE USE OF  
BLACK MOUNTAIN OPERATING, LLC  
I, Robert L. Lastrapes, Professional  
Surveyor, do hereby state this plat is true  
and correct to the best of my knowledge.



Robert L. Lastrapes  
Registration No. 23006

Point of  
Commencement/  
Calculated Corner  
@ the SE Corner  
of Section 26

Scale: 1" = 200'

200' 0 100' 200'

SURFACE USE PLAT

BLACK MOUNTAIN OPERATING, LLC  
PROPOSED PAD & ACCESS ROAD  
HENRI GRANDI NO. 1H WELL  
SECTION 26, T22S-R27E  
EDDY COUNTY, NEW MEXICO



C. H. Fenstermaker & Associates, L.L.C.  
135 Regency Sq Lafayette, LA 70508  
Ph 337-237-2200 Fax 337-232-3299  
www.fenstermaker.com

DRAWN BY: KJD		REVISIONS	
PROJ. MGR.: GDG	No. 1	DATE:	REVISED BY:
DATE: 02/24/2017	No	DATE:	REVISED BY:
FILENAME: T:\2017\2175369\DWG\HENRI GRANDI 1H SUP.dwg			

**NOTE:**

Please be advised, that while reasonable efforts are made to locate and verify pipelines and anomalies using our standard pipeline locating equipment, it is impossible to be 100 % effective. As such, we advise using caution when performing work as there is a possibility that pipelines and other hazards, such as fiber optic cables, PVC pipelines, etc. may exist undetected on site.

**NOTE:**

Many states maintain information centers that establish links between those who dig (excavators) and those who own and operate underground facilities (operators). It is advisable and in most states, law, for the contractor to contact the center for assistance in locating and marking underground utilities.

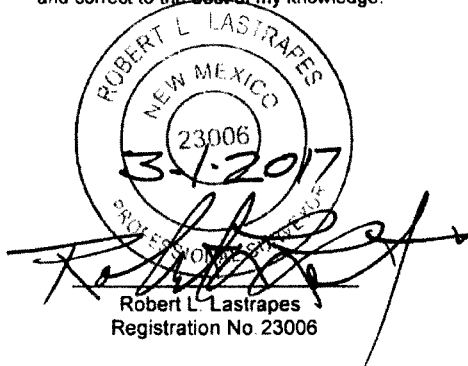
For guidance: New Mexico One Call - [www.nmonecall.org](http://www.nmonecall.org)

**DISCLAIMER:** At this time, C. H. Fenstermaker & Associates, L.L.C. has not performed nor was asked to perform any type of engineering, hydrological modeling, flood plain, or "No Rise" certification analyses, including but not limited to determining whether the project will impact flood hazards in connection with federal/FEMA, state, and/or local laws, ordinances and regulations. Accordingly, Fenstermaker makes no warranty or representation of any kind as to the foregoing issues, and persons or entities using this information shall do so at their own risk.

CENTERLINE PROPOSED ACCESSSS ROAD		
COURSE	BEARING	DISTANCE
1	N 89° 07' 54" W	38.39'

PROPOSED PAD		
COURSE	BEARING	DISTANCE
2	S 01° 09' 10" W	17.95'
3	N 88° 50' 50" W	350.00'
4	N 01° 09' 10" E	450.00'
5	S 88° 50' 50" E	350.00'
6	S 01° 09' 10" W	432.05'

FOR THE EXCLUSIVE USE OF  
BLACK MOUNTAIN OPERATING, LLC  
I, Robert L. Lastrapes, Professional  
Surveyor, do hereby state this plat is true  
and correct to the best of my knowledge.



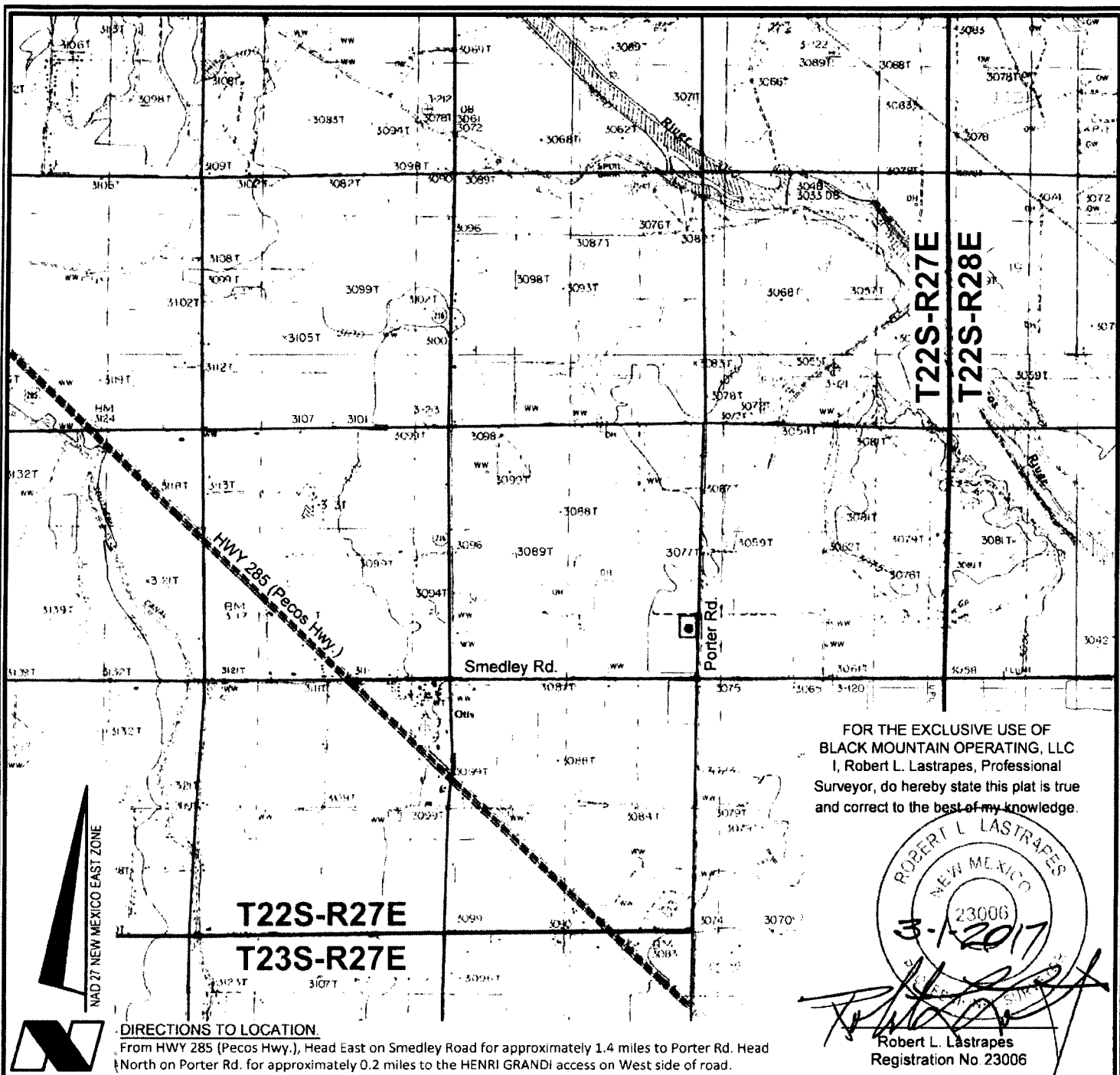
## SURFACE USE PLAT

**BLACK MOUNTAIN OPERATING, LLC**  
PROPOSED PAD & ACCESS ROAD  
HENRI GRANDI NO. 1H WELL  
SECTION 26, T22S-R27E  
EDDY COUNTY, NEW MEXICO



C. H. Fenstermaker & Associates, L.L.C.  
135 Regency Sq. Lafayette, LA 70508  
Ph 337-237-2200 Fax 337-232-3299  
[www.fenstermaker.com](http://www.fenstermaker.com)

DRAWN BY: KJD		REVISIONS	
PROJ. MGR.: GDG	No 1	DATE:	REVISED BY:
DATE: 02/24/2017	No	DATE:	REVISED BY:
FILENAME: T:\2017\2175369\DWG\HENRI GRANDI 1H SUP.dwg			



VICINITY MAP

3000' 0 1500' 3000'

**LEGEND**

- Proposed Well
- Proposed Onsite
- Section Line
- Township & Range
- - - Lease Road

**BLACK MOUNTAIN OPERATING, LLC**

HENRI GRANDI NO. 1H WELL  
LOCATED 1063' FSL AND 191' FEL  
SECTION 26, T22S-R27E  
EDDY COUNTY, NEW MEXICO



C H Fenstermaker & Associates, L L C  
135 Regency Sq. Lafayette, LA 70508  
Ph 337-237-2200 Fax 337-232-3299  
www.fenstermaker.com

DRAWN BY: KJD		REVISIONS	
PROJ. MGR.: GDG	No.	DATE:	REVISED BY:
DATE: 02/24/2017	No.	DATE:	REVISED BY:
FILENAME: T:\2017\2175369\DWG\HENRI GRANDI 1H Vicinity.dwg			