

MAR 01 2017

DISTRICT I  
1625 N. French Dr., Hobbs, NM 88240  
Phone: (575) 393-6161 Fax: (575) 393-0720  
DISTRICT II  
811 S. First St., Artesia, NM 88210  
Phone: (575) 748-1283 Fax: (575) 748-9720  
DISTRICT III  
1000 Rio Brazos Rd., Artesia, NM 87419  
Phone: (505) 334-6178 Fax: (505) 334-6170  
DISTRICT IV  
1220 S. St. Francis Dr., Santa Fe, NM 87505  
Phone: (505) 476-3460 Fax: (505) 476-3462

State of New Mexico  
Energy, Minerals & Natural Resources Department  
OIL CONSERVATION DIVISION  
1220 South St. Francis Dr.  
Santa Fe, New Mexico 87505

Form C-102  
Revised August 1, 2011  
Submit one copy to appropriate  
District Office  
☒ AMENDED REPORT

WELL LOCATION AND ACREAGE DEDICATION PLAT

API Number <b>30-015-42291</b>	Pool Code <b>98220</b>	Pool Name <b>PURPLE SAGE - WOLFCAMP GAS POOL</b>
Property Code	Property Name <b>NORTH BRUSHY DRAW FEDERAL 35</b>	Well Number <b>5H</b>
OGRID No. <b>246289</b>	Operator Name <b>RKI EXPLORATION &amp; PRODUCTION</b>	Elevation <b>2997'</b>

Surface Location

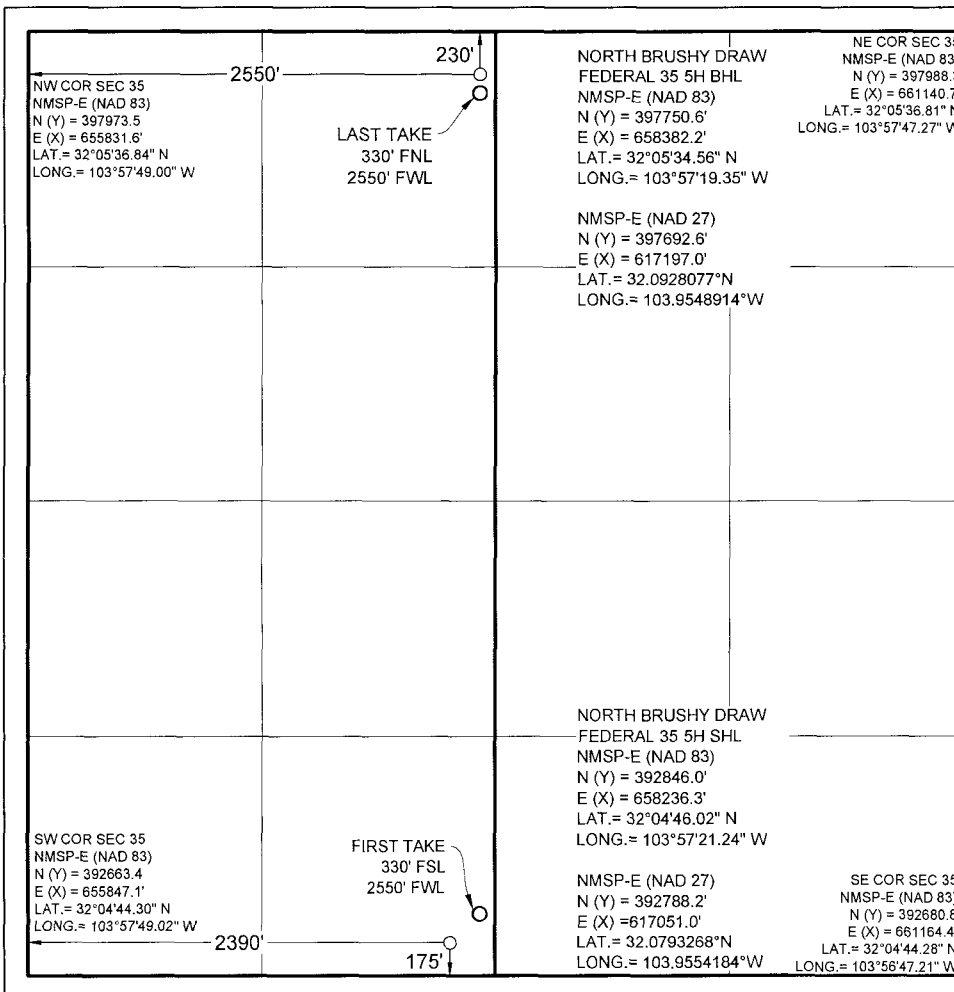
UL or lot no.	Section	Township	Range	Lot Idn	Feet from the	North/South line	Feet from the	East/West line	County
<b>N</b>	<b>35</b>	<b>25 S</b>	<b>29 E</b>		<b>175</b>	<b>SOUTH</b>	<b>2390</b>	<b>WEST</b>	<b>EDDY</b>

Bottom Hole Location If Different From Surface

UL or lot no.	Section	Township	Range	Lot Idn	Feet from the	North/South line	Feet from the	East/West line	County
<b>C</b>	<b>35</b>	<b>25 S</b>	<b>29 E</b>		<b>230</b>	<b>NORTH</b>	<b>2550</b>	<b>WEST</b>	<b>EDDY</b>

Dedicated Acres <b>320.00</b> W 1/2 OF SEC. 35	Joint or Infill	Consolidated Code	Order No.
--	-----------------	-------------------	-----------

No allowable will be assigned to this completion until all interests have been consolidated or a non-standard unit has been approved by the division.



OPERATOR CERTIFICATION

I hereby certify that the information contained herein is true and complete to the best of my knowledge and belief, and that this organization either owns a working interest or unleased mineral interest in the land including the proposed bottom hole location or has a right to drill this well at this location pursuant to a contract with an owner of such a mineral or working interest, or to voluntary pooling agreement or a compulsory pooling order heretofore entered by the division.

Signature: *Justin Barmore*  
Date: **02/27/2017**  
Print Name: **Justin Barmore**  
E-mail Address: **justin.barmore@wppenergy.com**

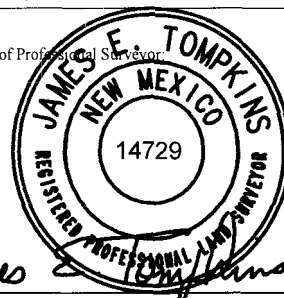
SURVEYORS CERTIFICATION

I hereby certify that the well location shown on this plat was plotted from field notes of actual surveys made by me or under my supervision, and that the same is true and correct to the best of my belief.

FEBRUARY 18, 2017

Date of Survey

Signature and Seal of Professional Surveyor



Job No.: **WTC51666**  
James E. Tompkins 14729  
Certificate Number