

NM OIL CONSERVATION

ARTESIA DISTRICT

District I
1625 N. French Dr., Hobbs, NM 88240
Phone: (575) 393-6161 Fax: (575) 393-0720
District II
811 S. First St., Artesia, NM 88210
Phone: (575) 748-1283 Fax: (575) 748-9720
District III
1000 Rio Brazos Road, Aztec, NM 87410
Phone: (505) 334-6178 Fax: (505) 334-6170
District IV
1220 S. St. Francis Dr., Santa Fe, NM 87505
Phone: (505) 476-3460 Fax: (505) 476-3462

State of New Mexico
Energy, Minerals & Natural Resources Department
OIL CONSERVATION DIVISION
1220 South St. Francis Dr.
Santa Fe, NM 87505

OCT 25 2016

Form C-102

Revised August 1, 2011

Submit one copy to appropriate

District Office

RECEIVED

☒ AMENDED REPORT

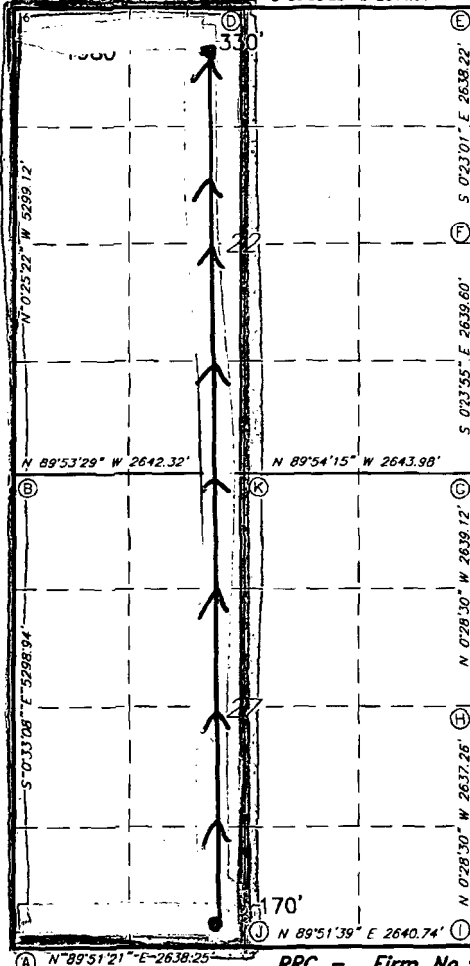
Amended Pool & Code
2/1/17

WELL LOCATION AND ACREAGE DEDICATION PLAT

1 API Number 30-015-43684		2 Pool Code 98226 Purple Sage;		3 Pool Name WC-015-5212520A; Wolfcamp	
4 Property Code 316068		5 Property Name OWL DRAW 27/22 W2NCFED COM		6 Well Number 1H	
7 GRID NO. 14744		8 Operator Name MEWBOURNE OIL COMPANY		9 Elevation 3178'	
10 Surface Location					
UL or lot no. N	Section 27	Township 26S	Range 27E	Lot Idn 170	Feet from the 2230'
			North/South line SOUTH	East/West line WEST	County EDDY
11 Bottom Hole Location If Different From Surface					
UL or lot no. C	Section 22	Township 26S	Range 27E	Lot Idn 35A'	Feet from the 2313'
			North/South line NORTH	East/West line WEST	County EDDY
12 Dedicated Acres 320		13 Joint or Infill		14 Consolidation Code	
				15 Order No. R-14262	

No allowable will be assigned to this completion until all interest have been consolidated or a non-standard unit has been approved by the division.

① S 89°40'02" E 2644.53' S 89°39'58" E 2644.91'



GEODETIC DATA
NAD 27 GRID - NM EAST
SURFACE LOCATION
N: 365994.7 - E: 548051.3
LAT: 32.00613826° N
LONG: 104.17831608° W
BOTTOM LOCATION
N: 376072.7 - E: 547632.1

CORNER DATA
NAD 27 GRID - NM EAST
A: FOUND BRASS CAP "1941"
N: 365819.1 - E: 545743.5
B: FOUND BRASS CAP "1941"
N: 371116.5 - E: 545692.4
C: FOUND BRASS CAP "1941"
N: 376414.2 - E: 545653.4
D: FOUND BRASS CAP "1941"
N: 376398.9 - E: 548297.2
E: FOUND BRASS CAP "1941"
N: 376383.5 - E: 550941.4
F: FOUND BRASS CAP "1941"
N: 373746.0 - E: 550959.1
G: FOUND BRASS CAP "1941"
N: 371107.1 - E: 550977.5
H: FOUND BRASS CAP "1941"
N: 368468.7 - E: 550999.3
I: FOUND BRASS CAP "1941"
N: 365832.2 - E: 551021.2
J: FOUND BRASS CAP "1941"
N: 365825.7 - E: 548381.1
K: FOUND BRASS CAP "1941"
N: 371111.5 - E: 548334.1

17 OPERATOR CERTIFICATION

I hereby certify that the information contained herein is true and complete to the best of my knowledge and belief, and that this organization either owns a working interest or unleased mineral interest in the land including the proposed bottom hole location or has a right to drill this well at this location pursuant to a contract with an owner of such a mineral or working interest, or to a voluntary pooling agreement or a compulsory pooling order heretofore entered by the division.

Signature Jacqui Lathan Date 10/20/16
Printed Name Jacqui Lathan

E-mail Address

18 SURVEYOR CERTIFICATION

I hereby certify that the well location shown on this plat was plotted from field notes of actual surveys made by me or under my supervision, and that the same is true and correct to the best of my belief.

9/19/2013

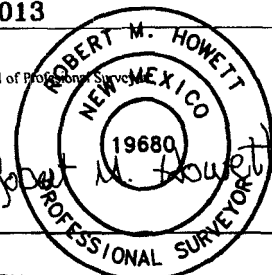
Date of Survey

Signature and Seal of Professional Surveyor

19680

Certificate Number

4/1/2015 BH



RRC - Firm No.: TX 10193838 NM 4655451 - Job No.: LS130383